



# Speed Enforcement Evaluator

### Location

700 BLK E First

### Total Percentage of Enforceable Violations

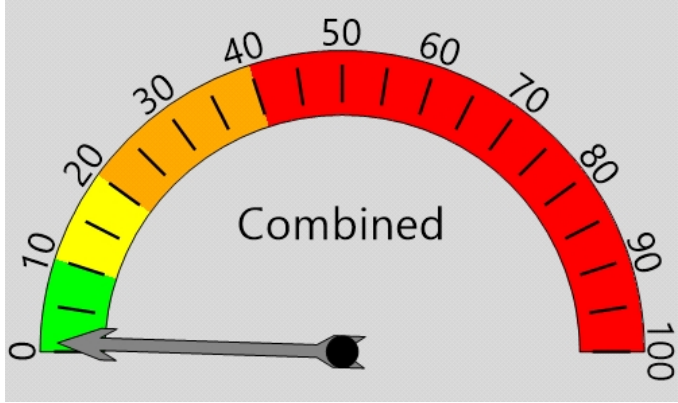
### Closest Cross Street

N Gifford

Posted Speed Limit 25 MPH  
Enforcement Tolerance 9 MPH

### Analysis Dates

Start: 9/1/2020  
End: 9/4/2020



### Equipment Used

Covert Radar

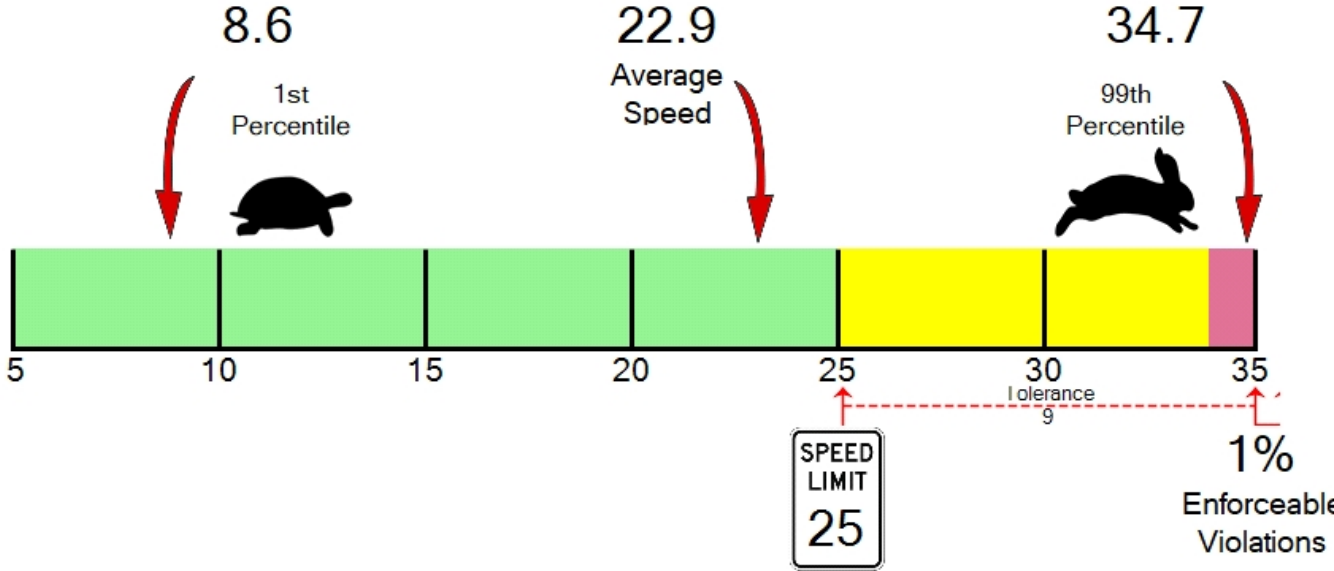
### Installed By

Krell

### Requested By

Ventura

Percent Speeding: 1%  
Rating: Low





**ARLINGTON POLICE DEPARTMENT**

110 East 3rd Street  
Arlington, WA 98223  
(360) 403-3400

**Vehicle Totals - Combined**

<= 3	<= 6	<= 9	<= 12	<= 15	<= 18	<= 21	<= 24	<= 27	<= 30	<= 33	<= 36	<= 39	> 39
0	0	36	37	110	225	690	919	859	436	129	36	12	6

85th Percentile: 27.2

**Vehicle Totals - Direction X, Lane 1**

<= 3	<= 6	<= 9	<= 12	<= 15	<= 18	<= 21	<= 24	<= 27	<= 30	<= 33	<= 36	<= 39	> 39
0	0	22	15	46	90	249	421	495	270	81	28	7	4

85th Percentile: 28.5

**Vehicle Totals - Direction X, Lane 2**

<= 3	<= 6	<= 9	<= 12	<= 15	<= 18	<= 21	<= 24	<= 27	<= 30	<= 33	<= 36	<= 39	> 39
0	0	14	22	64	135	441	498	364	166	48	8	5	2

85th Percentile: 26.6