



ARLINGTON POLICE DEPARTMENT

110 East 3rd Street
Arlington, WA 98223

Speed Enforcement Evaluator

Location:
300 BLK S Olympic AVE

Total Percentage of Enforceable Violations

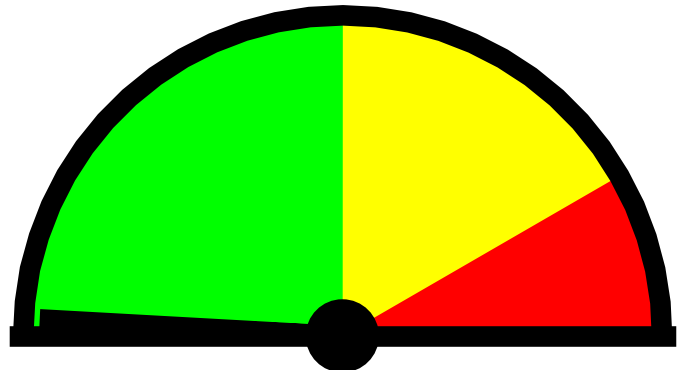
Closest Cross Street:
Jackson ST E

Analysis Dates:
Wednesday, September 11, 2019
Monday, September 16, 2019

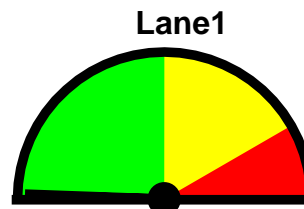
Equipment Used:
Covert Radar

Installed By:
VENTURA

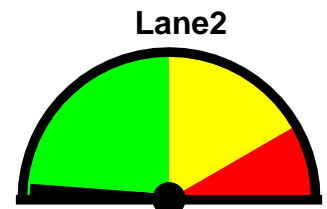
Requested By:
Mayor Tolbert



Posted Speed Limit: 25 MPH
Enforcement Tolerance: 9 MPH
Enforcement Limit: 35 MPH & Up
Percentage Above Limit: 0.4%
Enforcement Rating: **LOW**



Percent Above Limit: 0.3%
Enforcement Rating: LOW



Percent Above Limit: 0.6%
Enforcement Rating: LOW

Combined

| | | | | | | | | | | | | | |
|-----|------|-------|-------|-------|-------|-------|-------|-------|-------|-------|-------|-------|-----|
| 1-5 | 6-10 | 11-15 | 16-20 | 21-25 | 26-30 | 31-35 | 36-40 | 41-45 | 46-50 | 51-55 | 56-60 | 61-65 | >65 |
| 0 | 222 | 389 | 2576 | 6773 | 1826 | 160 | 25 | 4 | 1 | 1 | 1 | 0 | 0 |

85 percentile = 25

Lane1

| | | | | | | | | | | | | | |
|-----|------|-------|-------|-------|-------|-------|-------|-------|-------|-------|-------|-------|-----|
| 1-5 | 6-10 | 11-15 | 16-20 | 21-25 | 26-30 | 31-35 | 36-40 | 41-45 | 46-50 | 51-55 | 56-60 | 61-65 | >65 |
| 0 | 67 | 196 | 1149 | 3716 | 985 | 75 | 7 | 0 | 0 | 0 | 1 | 0 | 0 |

85 percentile = 25

Lane2

| | | | | | | | | | | | | | |
|-----|------|-------|-------|-------|-------|-------|-------|-------|-------|-------|-------|-------|-----|
| 1-5 | 6-10 | 11-15 | 16-20 | 21-25 | 26-30 | 31-35 | 36-40 | 41-45 | 46-50 | 51-55 | 56-60 | 61-65 | >65 |
| 0 | 155 | 193 | 1427 | 3057 | 841 | 85 | 18 | 4 | 1 | 1 | 0 | 0 | 0 |

85 percentile = 25