



Speed Enforcement Evaluator

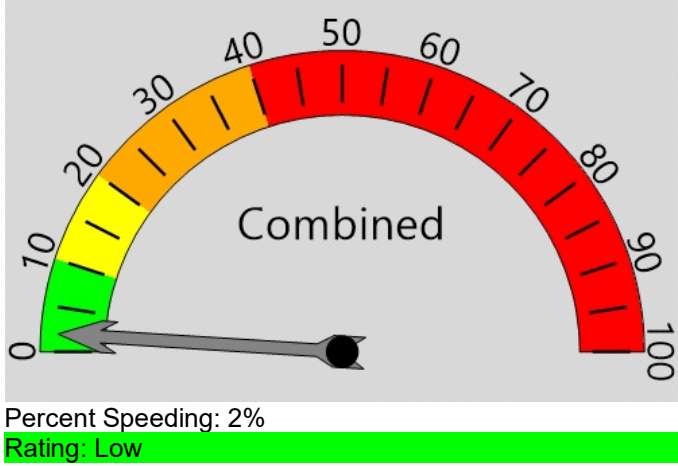
Location
300 BLK E Division

Total Percentage of Enforceable Violations

Closest Cross Street
Dunham Ave N

Posted Speed Limit 25 MPH
Enforcement Tolerance 9 MPH

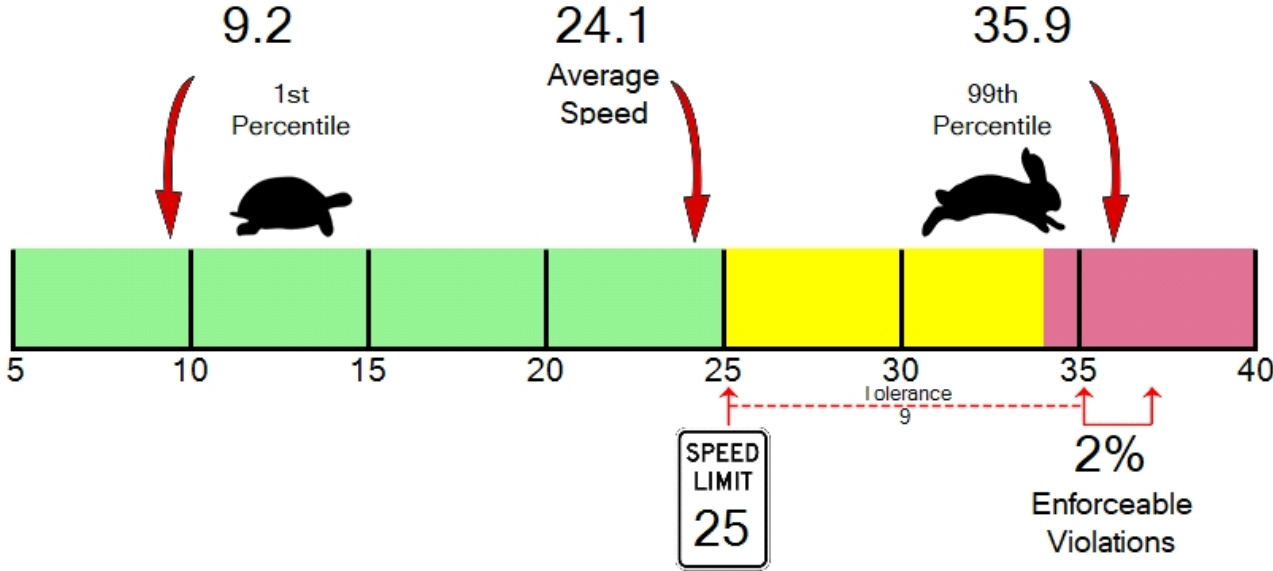
Analysis Dates
Start: 9/14/2020
End: 9/17/2020



Equipment Used
Covert Radar

Installed By
Krell

Requested By
Ventura





ARLINGTON POLICE DEPARTMENT

110 East 3rd Street
Arlington, WA 98223
(360) 403-3400

Vehicle Totals - Combined

<= 3	<= 6	<= 9	<= 12	<= 15	<= 18	<= 21	<= 24	<= 27	<= 30	<= 33	<= 36	<= 39	> 39
0	0	21	28	105	126	344	565	712	406	176	40	23	8

85th Percentile: 28.5

Vehicle Totals - Direction X, Lane 1

<= 3	<= 6	<= 9	<= 12	<= 15	<= 18	<= 21	<= 24	<= 27	<= 30	<= 33	<= 36	<= 39	> 39
0	0	21	28	105	126	344	565	712	406	176	40	23	8

85th Percentile: 28.5