



Speed Enforcement Evaluator

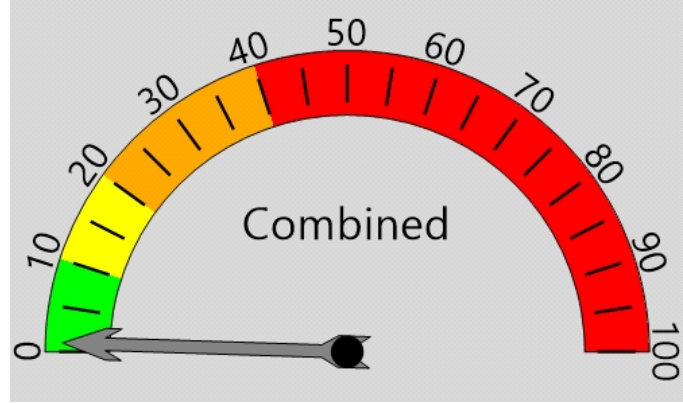
Location
200 BLK S Dunham

Total Percentage of Enforceable Violations

Closest Cross Street
E Union

Posted Speed Limit 25 MPH
Enforcement Tolerance 9 MPH

Analysis Dates
Start: 8/25/2020
End: 8/27/2020

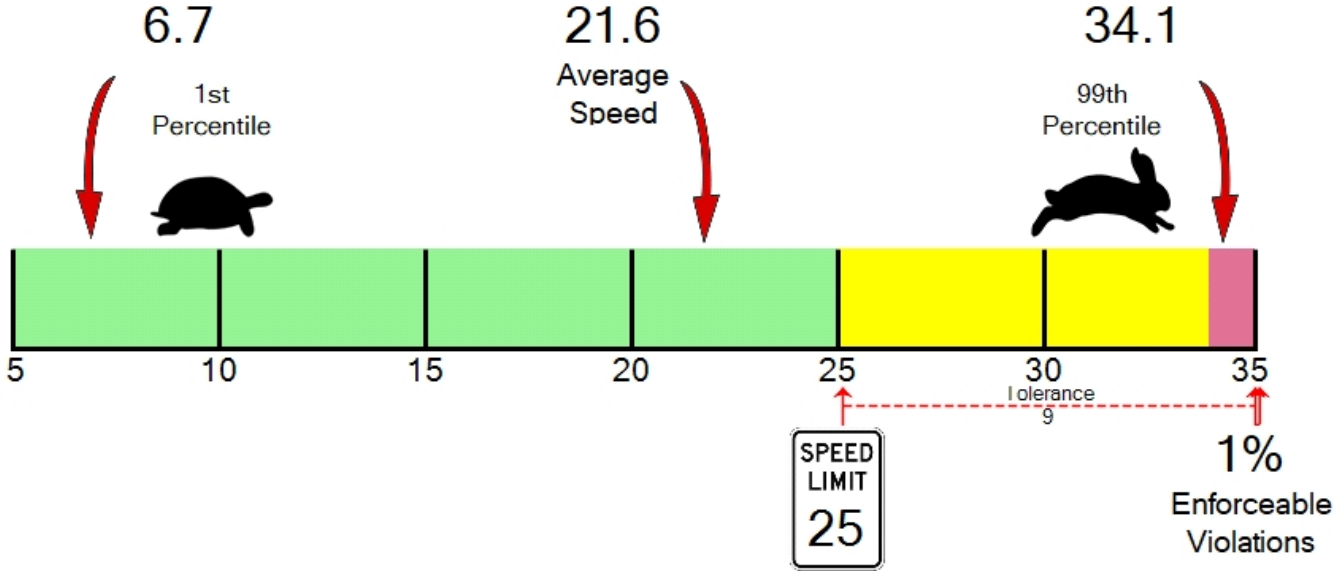


Equipment Used
Covert Radar

Installed By
Krell

Percent Speeding: 1%
Rating: Low

Requested By
Ventura





ARLINGTON POLICE DEPARTMENT

110 East 3rd Street
Arlington, WA 98223
(360) 403-3400

Vehicle Totals - Combined

<= 3	<= 6	<= 9	<= 12	<= 15	<= 18	<= 21	<= 24	<= 27	<= 30	<= 33	<= 36	<= 39	> 39
0	0	86	80	36	45	81	130	146	91	24	4	6	0

85th Percentile: 27.2

Vehicle Totals - Direction X, Lane 1

<= 3	<= 6	<= 9	<= 12	<= 15	<= 18	<= 21	<= 24	<= 27	<= 30	<= 33	<= 36	<= 39	> 39
0	0	32	51	21	21	31	49	74	36	14	0	1	0

85th Percentile: 27.2

Vehicle Totals - Direction X, Lane 2

<= 3	<= 6	<= 9	<= 12	<= 15	<= 18	<= 21	<= 24	<= 27	<= 30	<= 33	<= 36	<= 39	> 39
0	0	54	29	15	24	50	81	72	55	10	4	5	0

85th Percentile: 27.2