



City of Arlington Preliminary Site Assessment

SITE INFORMATION

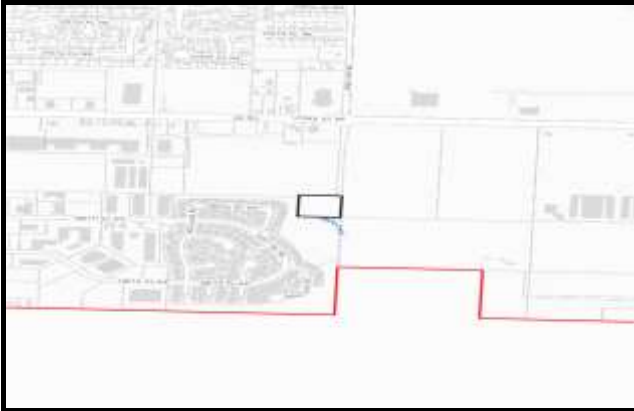


Figure 1. Location Map.

| | |
|----------------------|---------------------|
| Parcel Number: | 31052800207100 |
| Parcel Area (acres): | 2 |
| Site Address: | UNKNOWN, UNKNOWN |
| Property Owner: | WAL-MART STORES INC |

Maps and GIS data are distributed "AS-IS" without warranties of any kind, either express or implied, including but not limited to warranties of suitability for a particular purpose or use. Map data are compiled from a variety of sources which may contain errors and users who rely upon the information do so at their own risk. Users agree to indemnify, defend, and hold harmless the City of Arlington for any and all liabilities of any nature arising out of or resulting from the lack of accuracy or correctness of the data, or the use of the data presented in the maps.

SITE CHARACTERISTICS

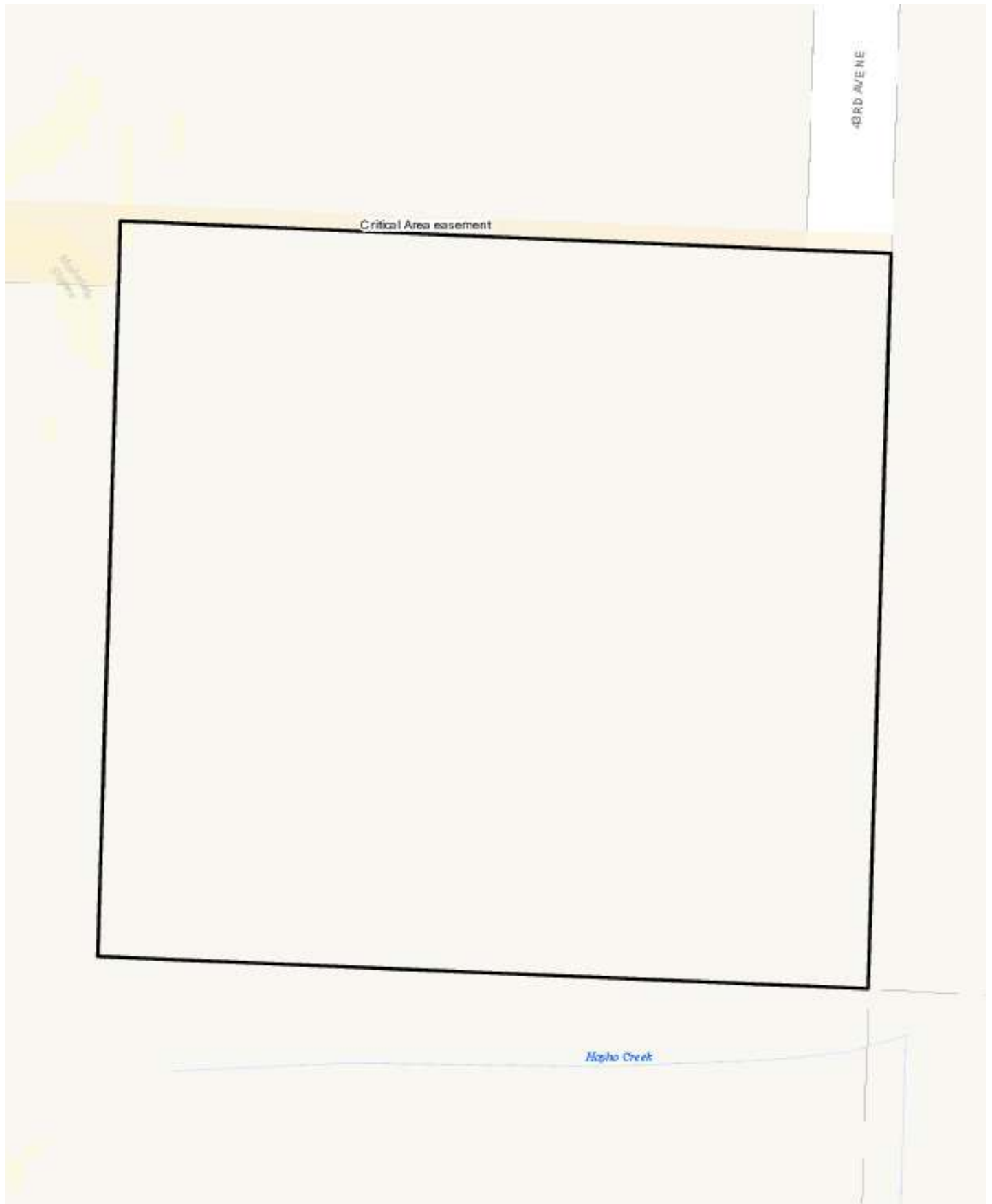
| | | | | | |
|--|-----------|-----------------------|---------------------------------|---------|--------|
| Percent Saturated/Wetland Soils Onsite | | | USGS Aquifer Sensitivity | Low: | |
| Slopes Onsite | 0 to 8% | 97.9% | | Medium: | |
| | 8 to 12% | 1.7% | | High: | 100.0% |
| | 12 to 15% | 0.3% | Drinking Water Well Onsite? | | No |
| | 15 to 20% | 0.1% | Soil Contamination Area Onsite? | | No |
| | 20 to 33% | | UST Onsite? | | No |
| > 33% | | Septic System Onsite? | | No | |

Note: Not all criteria used in the preliminary BMP site assessments are summarized in this report. For a full list of criteria analyzed for each BMP please see the BMP Preliminary Site Assessment criteria tables.

PERCENT OF SITE POTENTIALLY NOT SUITABLE FOR BMP IMPLEMENTATION

| | | | | | |
|--------------------------------------|-----|----------------------|-------------------------|-------------------------------------|-------------------------|
| Infiltrating Bioretention Cell/Swale | 30% | Permeable Pavement | 0% | Underground Detention and Treatment | On a site by site basis |
| Infiltrating Bioretention Planter | 30% | Ponds and Wetlands | 22% | Aboveground Sand Filtration | On a site by site basis |
| Non-Infiltrating Bioretention | 0% | Basic Filter Strips | On a site by site basis | Infiltration BMPs | On a site by site basis |
| | | Biofiltration Swales | On a site by site basis | Dispersion BMPs | On a site by site basis |

CRITICAL AREAS MAP



UTILITIES MAP

