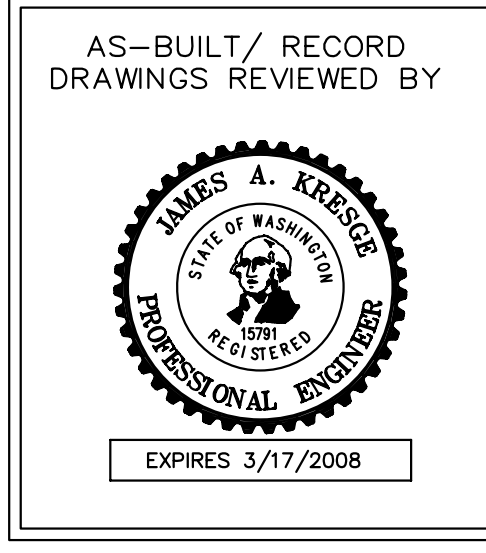
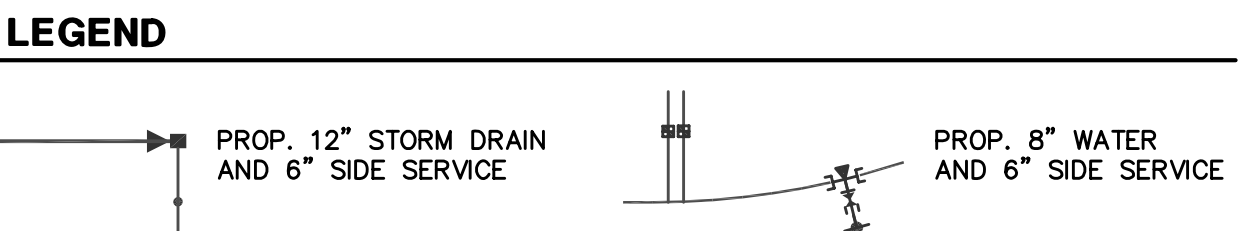


NOTE
ALL MANHOLES SHALL BE INSPECTED AND APPROVED PRIOR TO BACKFILL.

REFERENCE NOTE
THE FOLLOWING CITY OF ARLINGTON STANDARD PLANS SHALL BE USED IN THE CONSTRUCTION OF THIS PROJECT. FOR ADDITIONAL STANDARD PLANS, SEE THE LATEST EDITION OF THE CITY OF ARLINGTON PUBLIC WORKS CONSTRUCTION STANDARDS AND SPECIFICATIONS.

PRECAST MANHOLE SERVICE CONNECTION ELEVATION DROP CONNECTION CLEANOUT

STD. PLAN NO. S-1
STD. PLAN NO. S-8
STD. PLAN NO. S-10
STD. PLAN NO. S-11



DATUM N.A.V.D. 1988
BENCHMARK TOP OF REBAR AND CAP LOCATED AT THE INTERSECTION OF 67TH AVE. N.E. AND THE BNSF RAILROAD, AS SHOWN ON THE VICINITY MAP ABOVE. ELEV. = 148.17
FOR CONVERSION TO N.G.V.D. 1929, SUBTRACT 3.70 FEET.

HIGA-BURKHOLDER ASSOCIATES, LLC
LAND USE PLANNING / CIVIL ENGINEERING
1721 Hewitt Avenue Suite 401 Everett, WA 98201
phone (425)252-2826 fax (425)252-9551



CITY OF ARLINGTON
THIS SHEET HAS BEEN APPROVED PER THE CONDITIONS ON SHEET 1
BY: _____ CITY ENGINEER
DATE: ____ / ____ / ____

CALL 48 HOURS BEFORE YOU DIG 1-800-424-5555

DATE	REVISIONS	BY	PLAN DATE:
6/16/03	REVISED PER CITY REVIEW	LDR	10/04/02
9/26/03	REVISED PER CITY REVIEW	LDR	DESIGNED BY: TDP
8/05/04	AS-BUILT	PCM, JMH	DRAWN BY: TDP, PCM
10/07/04	AS-BUILT REV. PER CITY REVIEW	PCM	PLAN CHECK BY: BOM
07/28/06	AS-BUILT REV. PER CITY REVIEW	RLM	1ST SUBMITTAL: 10/10/02
09/27/06	AS-BUILT REV. PER CITY REVIEW	RLM	2ND SUBMITTAL: 06/26/03
10/11/06	AS-BUILT MYLAR	RLM	3RD SUBMITTAL: 09/26/03

WATER AND SEWER PLANS
MAGNOLIA ESTATES
SEWER PLAN

JOB NO. 1618
3
6