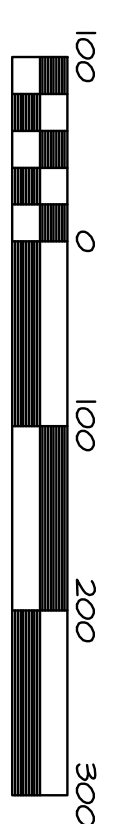




BASIS OF BEARING - NAD 83 WASHINGTON NORTH ZONE  
 THE CENTERLINE OF BARRE AVE AS MONUMENTED  
 AND SHOWN HEREON BEARS NORTH 89°19'07" WEST

**LEGEND**

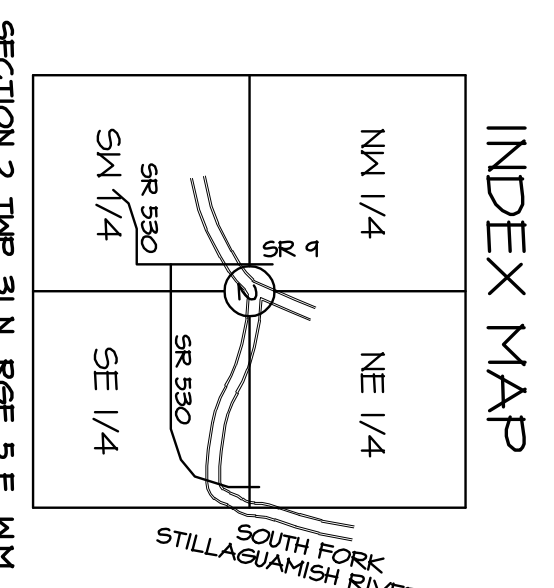
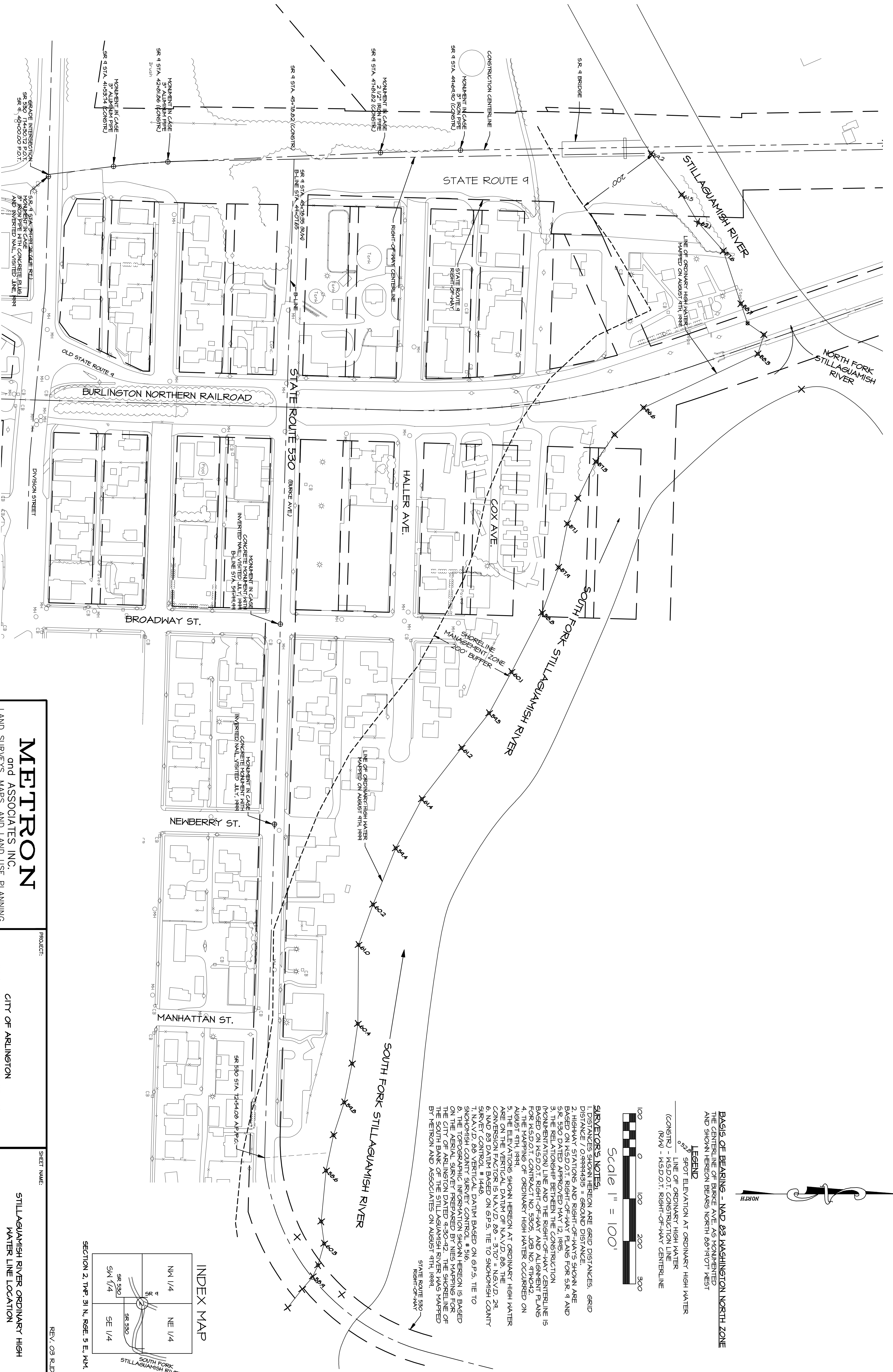
- SPOT ELEVATION AT ORDINARY HIGH WATER
- LINE OF ORDINARY HIGH WATER
- (CONSTR) - M.S.D.O.T. CONSTRUCTION LINE
- (RW) - M.S.D.O.T. RIGHT-OF-WAY CENTERLINE



Scale 1" = 100'

**SURVEYOR'S NOTES:**

1. DISTANCES SHOWN HEREON ARE GRID DISTANCES. GRID DISTANCE / 0.99994315 = GROUND DISTANCE.
2. HIGHWAY STATIONS AND RIGHT-OF-WAYS SHOWN ARE BASED ON M.S.D.O.T. RIGHT-OF-WAY PLANS FOR SR. 9 AND SR. 530 DATED APPROXIMATELY MAY 12, 1945.
3. THE RELATIONSHIP BETWEEN THE CONSTRUCTION MONUMENTATION LINE AND THE RIGHT-OF-WAY CENTERLINE IS FURTHER EXPLAINED ON SHEET NO. 530A, L.B. NO. 6194242.
4. THE MAPPING OF ORDINARY HIGH WATER OCCURRED ON AUGUST 9TH, 1944.
5. THE ELEVATIONS SHOWN HEREON AT ORDINARY HIGH WATER ARE ON THE VERTICAL DATUM OF N.A.V.D. 88. THE CONVERSION FACTOR IS N.A.V.D. 88 - 3.70' = N.G.V.D. 24.
6. SURVEY CONTROL BASED ON 67+5. THE TO SHOMONISH COUNTY T.N.A.V.D. 88 VERTICAL DATUM BASED ON 67+5. THE TO SHOMONISH COUNTY SURVEY CONTROL # 516.
7. THE TOPOGRAPHIC INFORMATION SHOWN HEREON IS BASED ON THE AERIAL SURVEY PREPARED BY NIES MAPPING FOR THE CITY OF ARLINGTON DATED 9-30-02. THE SHORELINE OF THE SOUTH FORK OF THE STILLAGUAMISH RIVER WAS MAPPED BY METTRON AND ASSOCIATES ON AUGUST 9TH, 1944.



REV. 03 RLD 9/20/04

# METTRON

and ASSOCIATES INC.  
 LAND SURVEYS, MAPS, AND LAND USE PLANNING  
 307 N. OLYMPIC AVENUE, SUITE 203  
 ARLINGTON, WASHINGTON 98223  
 (360) 435-3777 FAX (360) 435-4822

PROJECT:  
 CITY OF ARLINGTON  
 STILLAGUAMISH RIVER SHORELINE MAP  
 A PORTION OF SECTION 2, TOWNSHIP 31 NORTH,  
 RANGE 5 EAST, M41, SHOMONISH COUNTY, WASHINGTON

## STILLAGUAMISH RIVER ORDINARY HIGH WATER LINE LOCATION

DESIGN BY: R.L. DEONES	APPROVED BY: J.E.B. DATE:	PROJECT NO.:
DATE: 8/1/04	SCALE: 1" = 100 FT.	4913D
FIELD BOOK: TINSBERGERS	DWG. FILE: 4913D.DWG	SHEET:
		1 OF 1