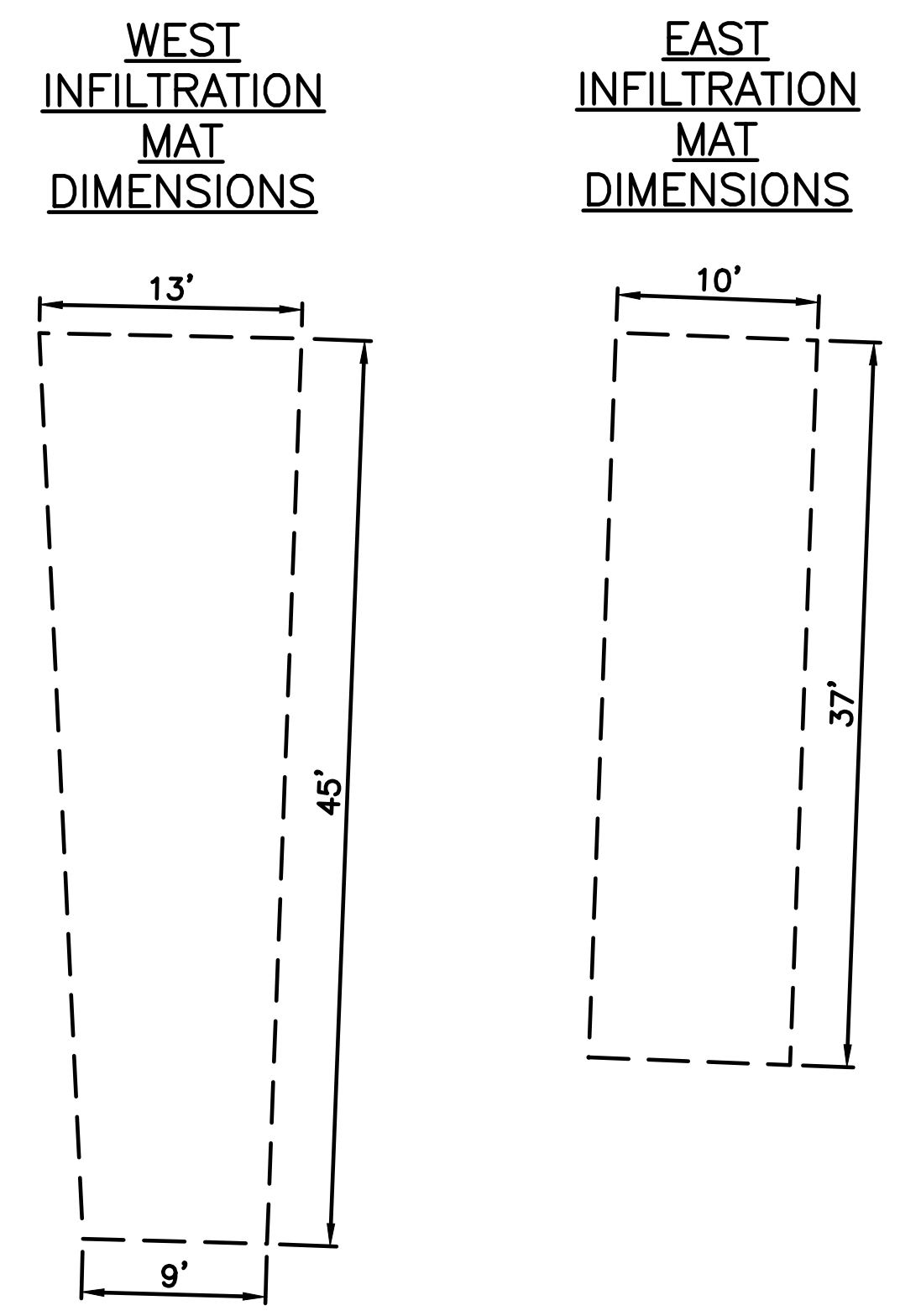
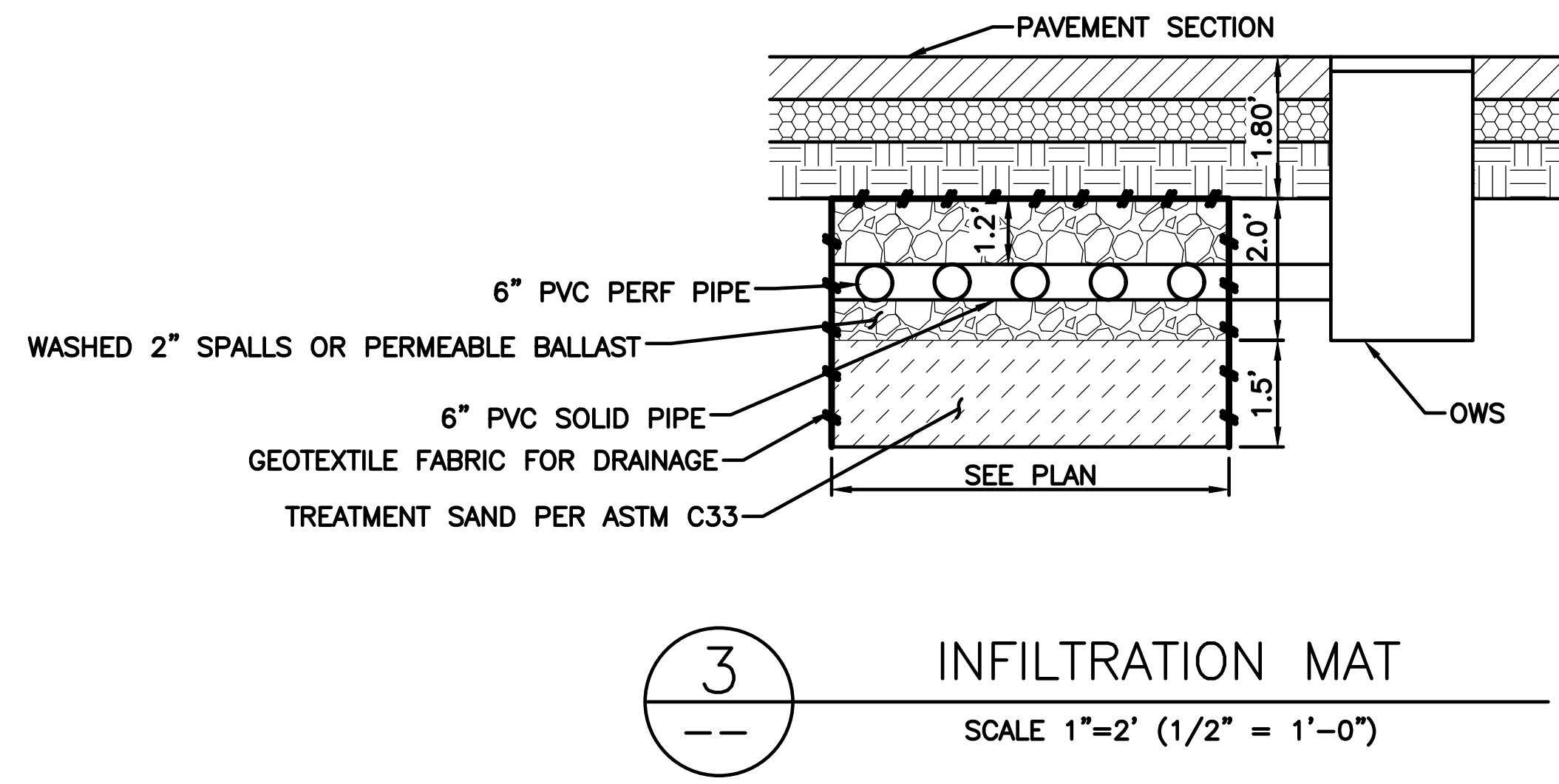
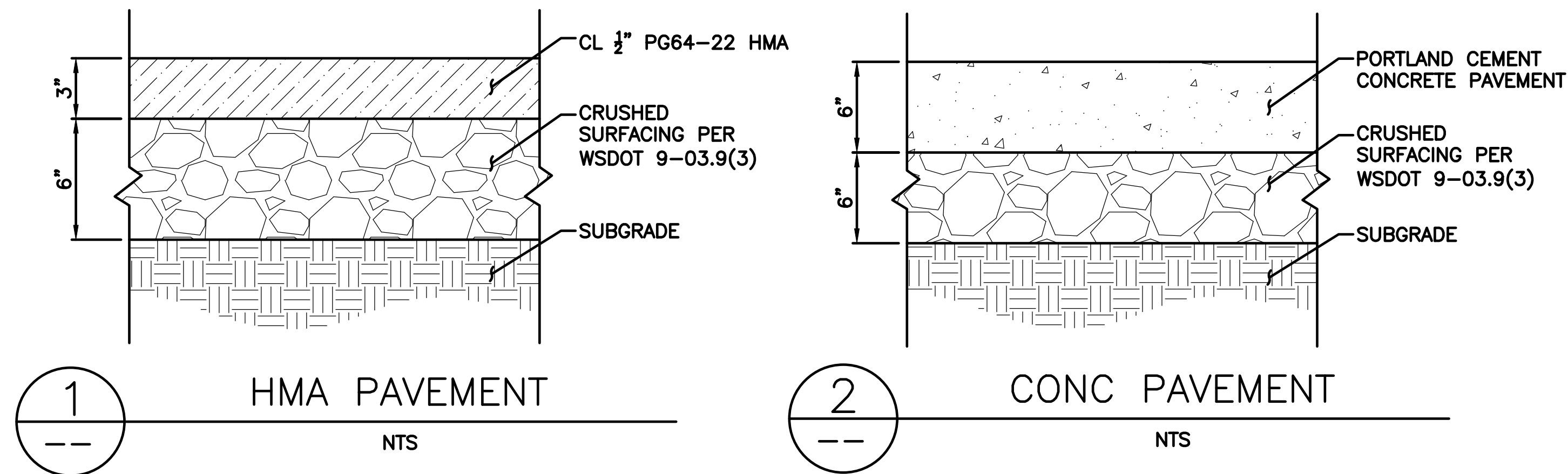
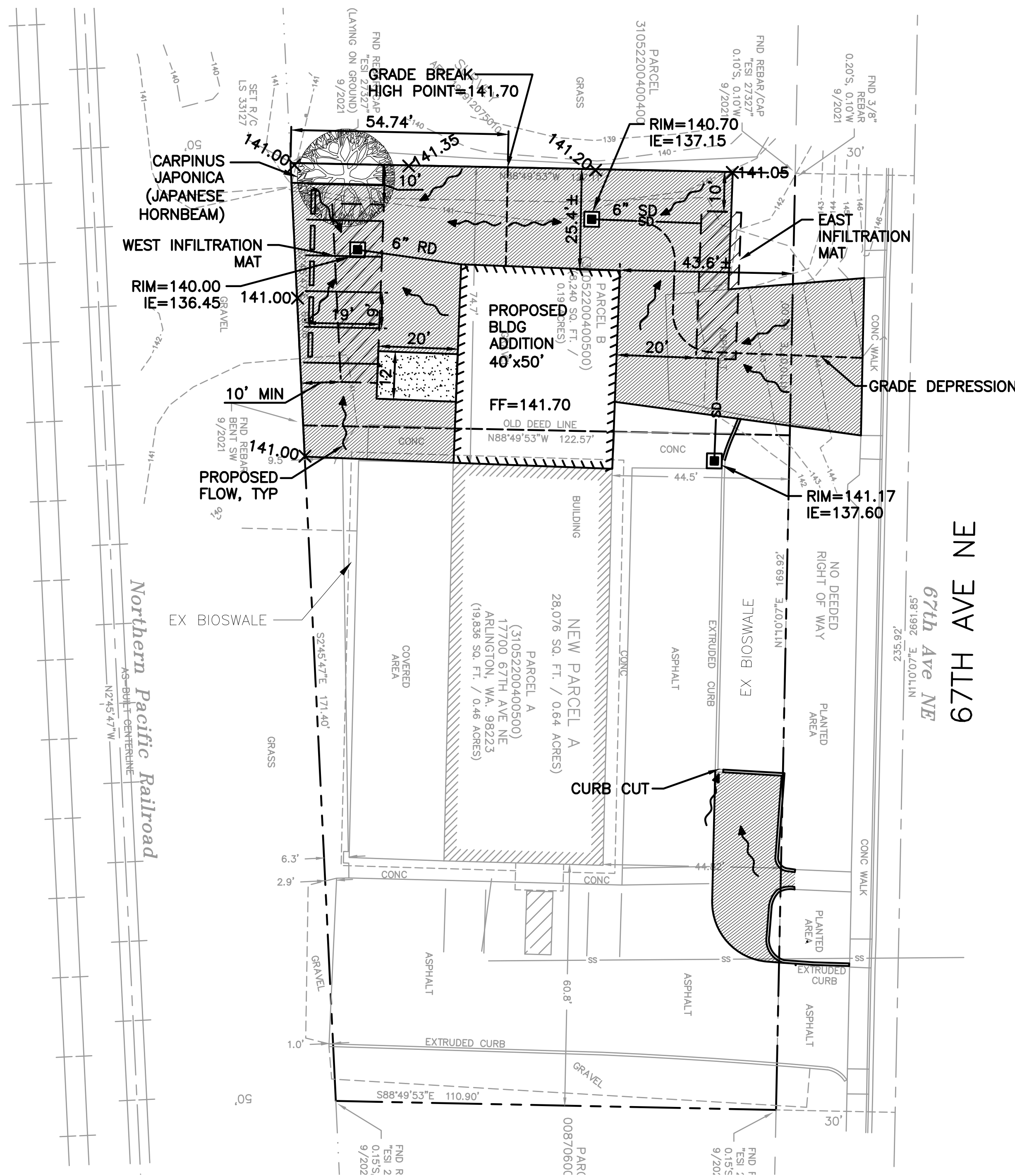


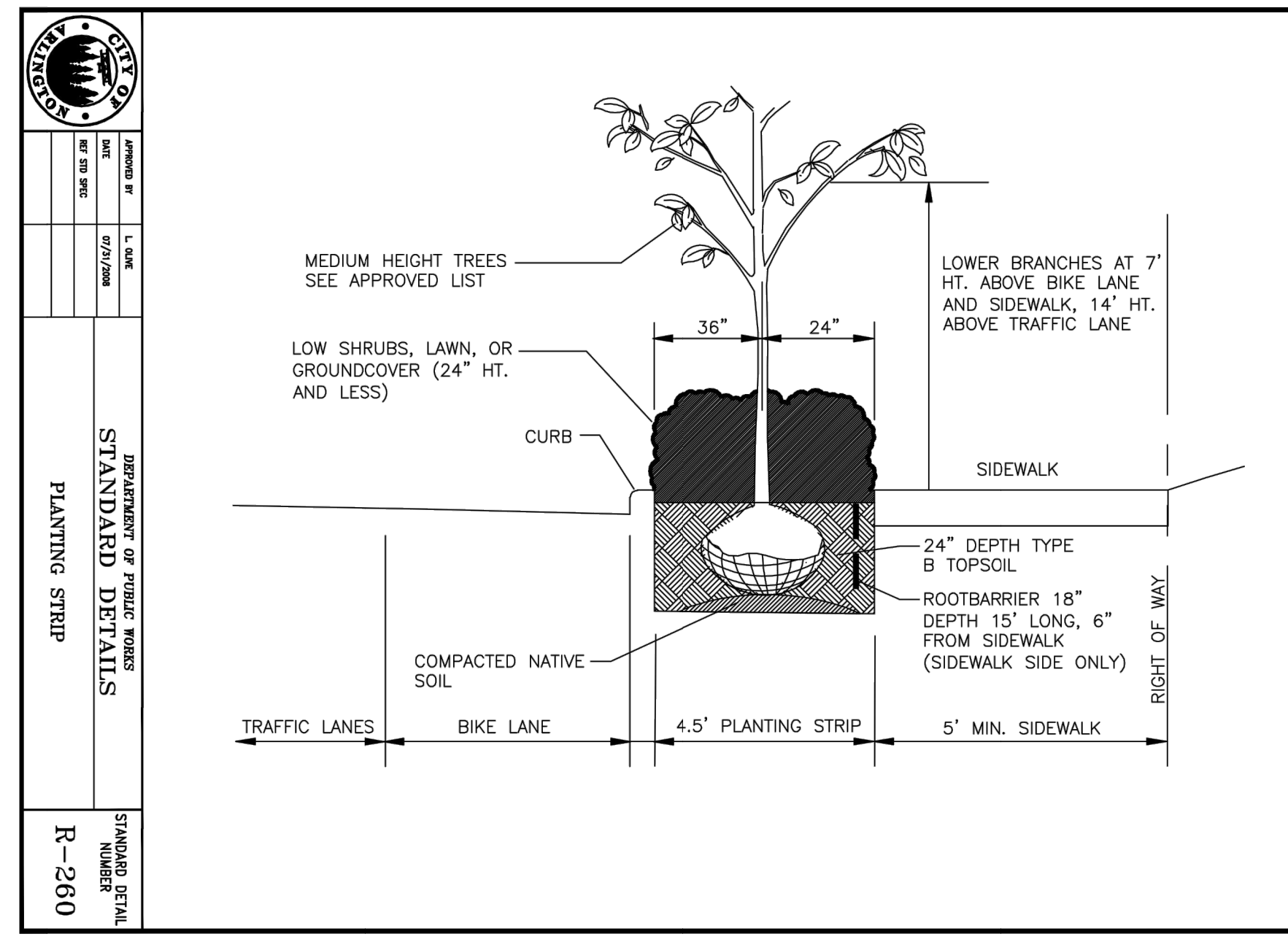
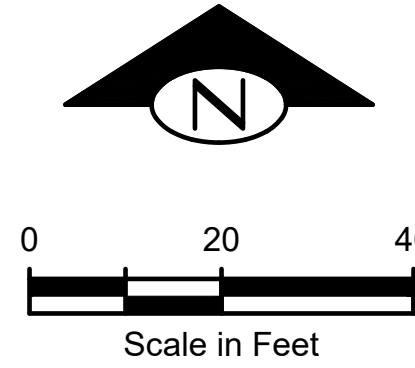
NOTES:

- SEE SHEET C1.1, C1.2 AND C1.3 FOR GENERAL INFORMATION.
- (PSD) PERFORATED STORM DRAIN PIPE SHALL BE SDR-35 PVC PIPE PER ASTM D3034, WITH TWO ROWS OF 1/2" DIAMETER HOLES AT 12" OC.
- (CO) CLEANOUTS SHALL CONFORM TO COA STD DETAIL SS-080.
- GEOTEXTILE FABRIC SHALL BE NONWOVEN AND SUITABLE FOR SEPARATION APPLICATIONS.
- ALL CB'S SHALL BE OWS PER STD PLAN SD-120.



LEGEND

- HMA PAVEMENT
- CONCRETE PAVEMENT



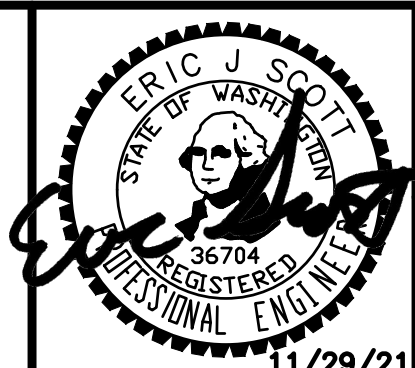
CITY OF ARLINGTON
CONSTRUCTION DRAWING APPROVAL
THIS PLAN SHEET HAS BEEN REVIEWED AND APPROVED PER THE CONDITIONS ON THE TITLE SHEET.
BY: Nova Heaton, PE, Development Services Manager
DATE: _____ THIS APPROVAL VALID FOR 18 MONTHS

Plotted: Nov 30, 2021 - 9:25am Rodney T:\Projects\210316 Solid Rock Expansion (Arlington)\Plans\SLDRK_P-CIVIL.dwg Layout Name: C2.2 SITE PLAN

PLAN CHECK	BY	DATE			
DATE	NO.	REVISION		BY	
DESIGNED BY:		REVIEWED BY:			

COAST
CONSTRUCTION GROUP
328 N Olympic Ave Arlington WA 98223 • Office (360) 474-0600
www.coast-group.com

TerraVista NW LLC
Consulting Engineers
3204 SMOKEY POINT DR, #207
ARLINGTON, WA 98223
360-391-9272
WWW.TERRAVISTANW.COM



SOLID ROCK CREATIONS EXPANSION
17700 67TH AVE NE, ARLINGTON, WA 98223
SITE-DRAINAGE PLAN

JOB NO.
210316
C2.2