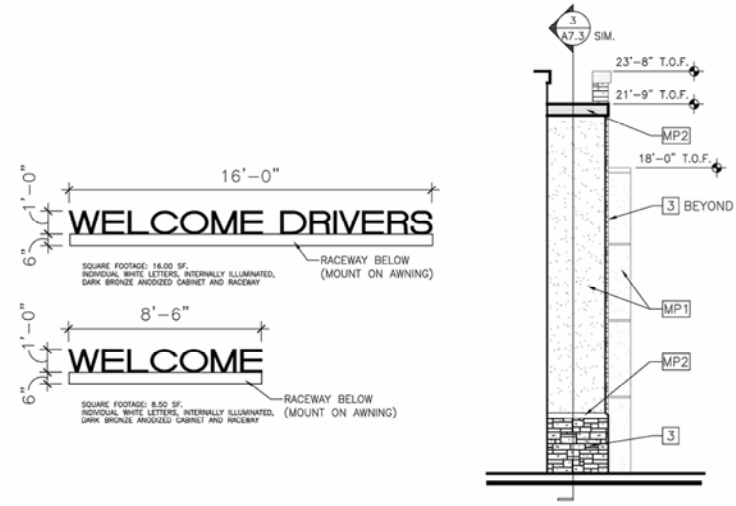
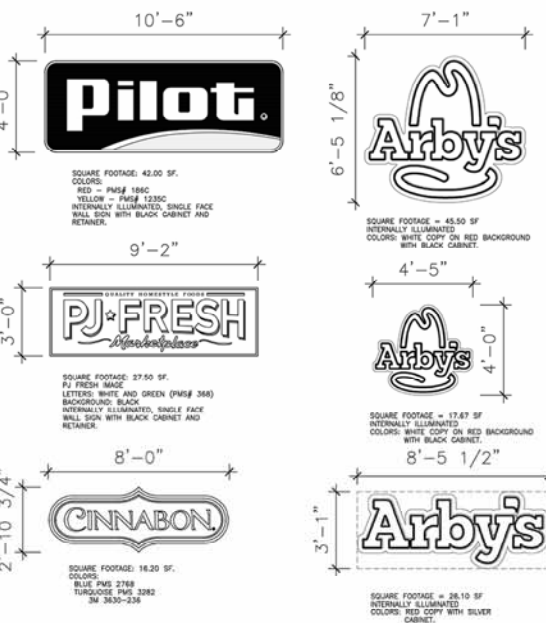


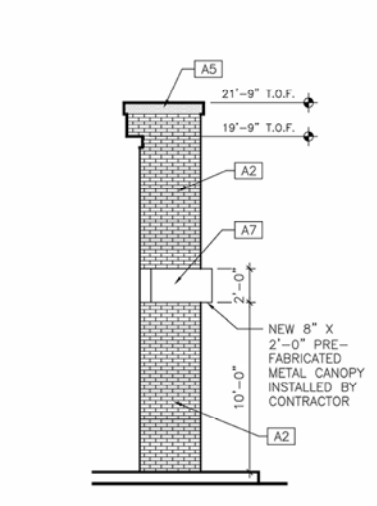
**1 FRONT ELEVATION**  
 A6 3/16" = 1'-0"



**2 REAR ELEVATION**  
 A6 3/16" = 1'-0"



**3 SIDE WALL ELEVATION**  
 A6 3/16" = 1'-0"



**4 SIDE WALL ELEVATION (RESTAURANT)**  
 A6 3/16" = 1'-0"

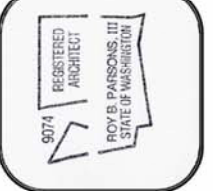
PILOT EXTERIOR LEGEND	
1	NOT USED
2	NOT USED
3	SUNSET STONE - "SAGEBRUSH LEDGE", DRY STACK
4	"BLACK" LIGHT FIXTURE
5	WALL PACK
6	CERAMIC TILE, ATLAS CONCORDE, ETC. ULIVO-FINISH; SLIGHTLY TEXTURED, 9"X36" w/ LATICRETE PERMACOLOR GROUT; COLOR #35 MOCHA (TILE TO BE LAID IN A "RANDOM" PATTERN W/ 1/8" GROUT JOINTS)
7	GOOSENECK LIGHT FIXTURE
8	WALL SCIENCE
MP1	MARKETPLACE LIGHT COLOR STUCCO "NOMADIC DESERT" - SW#6107
MP2	MARKETPLACE DARK COLOR STUCCO "PORTOBELLO" - SW#6102

ARBY'S EXTERIOR LEGEND	
A1	ARBY'S DARK COLOR STUCCO "ROCKWOOD DARK BROWN" - SW#2808 w/ HORIZONTAL 1/2" V-GROOVES AT 9" O.C.(TYP.)
A2	ARBY'S STUCCO TO MATCH DRYVIT "CUSTOM BRICK" 3/4" GROUT 28 pt TEMPLATE #012 MOONLIGHT N29 GROUT QUARTZPUTZ #101 SUPER WHITE DPR FINISH
A3	ARBY'S LIGHT COLOR STUCCO TO MATCH DRYVIT COLOR #310 "CHINA WHITE"
A4	ARBY'S DARK COLOR STUCCO "FUNCTIONAL GRAY" - SW#7024
A5	ARBY'S FASCIA PAINT COLOR TO MATCH DRYVIT COLOR #310 "CHINA WHITE"
A6	ARBY'S FASCIA PAINT COLOR TO MATCH "ROCKWOOD DARK BROWN" - SW#2808
A7	ARBY'S CANOPY PAINT COLOR "SAFETY RED" - SW#66R38

GLASS LEGEND	
1"	TEMPERED SAFETY GLASS COLOR: OL-PPG "SOLARBAN 60" (#2) ON 1" CLEAR GLASS IL: PPG 1" CLEAR SPACE: 1/2" AIR
1"	INSULATED GLASS COLOR: OL-PPG "SOLARBAN 60" (#2) ON 1" CLEAR GLASS IL: PPG 1" CLEAR SPACE: 1/2" AIR
1"	SPANDREL GLASS COLOR: OL-PPG "SOLARBAN 60" (#2) ON 1" CLEAR GLASS IL: PPG 1" CLEAR, OLDCASTLE BLACK FRIT (#4) SPACE: 1/2" AIR
AL1	CLEAR ANODIZED ALUMINUM FINISH
AL2	DARK BRONZE ALUMINUM FINISH

WALL TEXTURE LEGEND	
DARK STUCCO TROWELED TEXTURE FINISH	LIGHT STUCCO MEDIUM SAND FLOAT FINISH
DARK STUCCO MEDIUM SAND FLOAT FINISH	LEDGE STONE

**NOTE**  
 CONTRACTOR IS TO INSTALL ALL JOINTS/REVEALS IN STUCCO AND TILE ONLY IN THE LOCATIONS SHOWN AND DIMENSIONED ON THE PLANS. ANY DEVIATION MUST BE PRE-APPROVED IN WRITING BY FLYING J'S CORPORATE ARCHITECT. FAILURE TO FOLLOW THIS WILL RESULT IN THE JOINTS BEING REMOVED, REINSTALLED PROPERLY AND THAT AREA REFINISHED AT THE CONTRACTORS EXPENSE.



**FLOT FLYING J**  
 DESIGN DEPARTMENT  
 5509 LONAS ROAD  
 KNOXVILLE, TENNESSEE 37909  
 (866) 588-7488



**EXTERIOR ELEVATIONS**  
**PILOT TRAVEL CENTER**  
 20600 SMOKEY POINT BLVD.  
 ARLINGTON, WA 98223

DATE	REV	DESCRIPTION	INT.
03/22/16		DRAWN BY: DLH	
		PROJECT: 1103-01	

CONFIDENTIAL  
 NO USE OR REPRODUCTION OF THIS DRAWING IS PERMITTED, EXCEPT AS EXPRESSLY AUTHORIZED BY FLOT FLYING J.  
 SHEET: **A6**