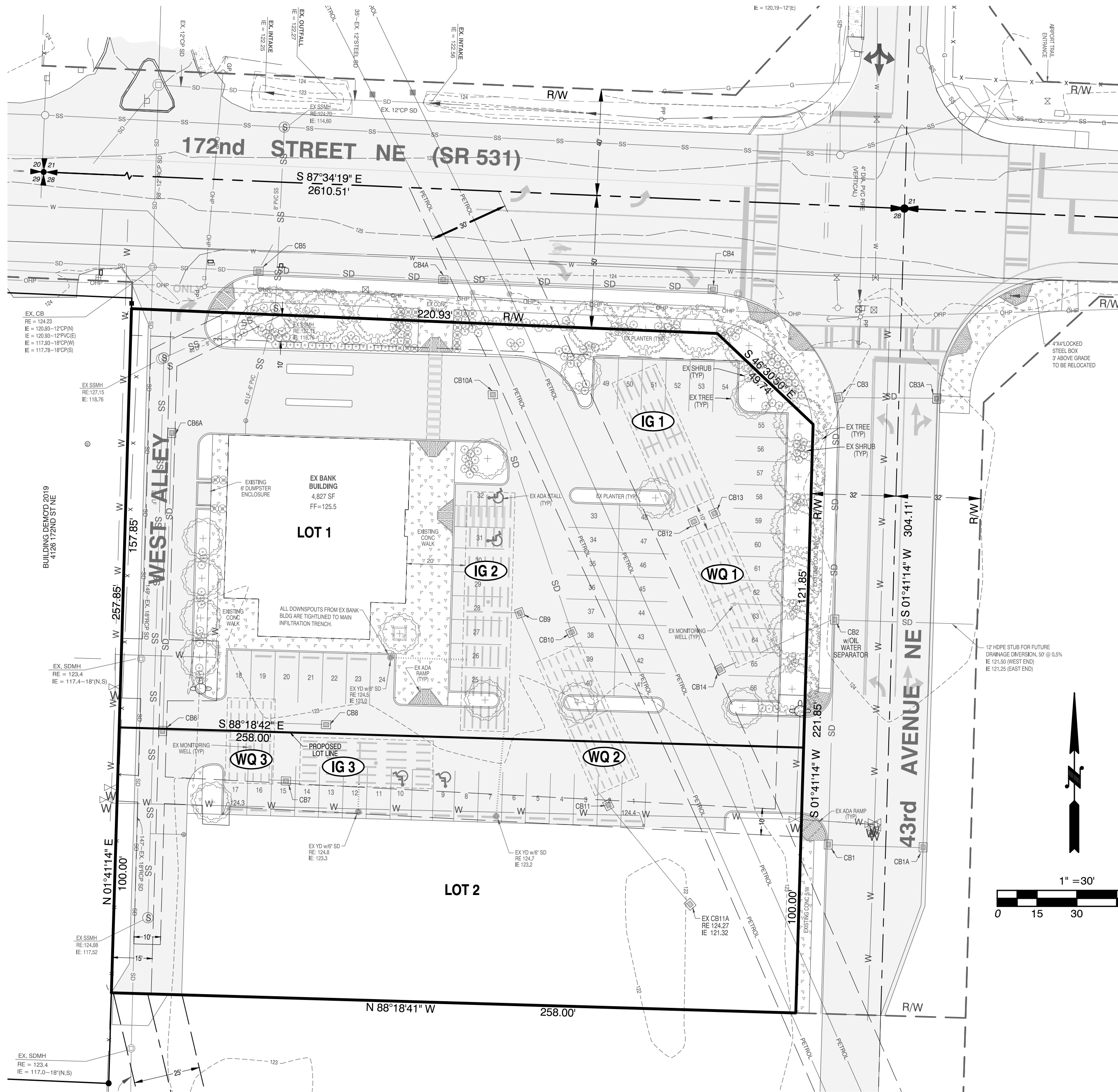


NE1/4, NW1/4, SEC 28, TWN 31 N, RNG 5 E, WM, WA

HERITAGE BANK SHORT PLAT



STORM STRUCTURES (EXISTING)		
CI 1A - CONC. INLET 43RD AVE NE RE: 124.35 IE: 122.20	CB 5 - TYPE 1L W/ OWS 172ND STREET NE RE: 124.50 IE: 120.72	CI 10A - CONC. INLET RE: 124.25 IE: 122.00
CB 1 - TYPE 1 43RD AVE NE RE: 124.20 IE: 121.90	EX. CB - TYPE 2 172ND STREET NE RE: 124.23 IE: 120.93-12'IN(E)	CB 10 - TYPE 1L W/ OWS RE: 124.24 IE: 121.25
CB 2 - TYPE 1L W/ OWS 43RD AVE NE RE: 124.85 IE: 121.40 (W) IE: 121.50 (N, S, E)	CI 6A - CONC. INLET WEST ALLEY RE: 124.30 IE: 121.50	CI 11A - CONC. INLET RE: 124.27 IE: 121.32 (OUT NW)
CI 3A - CONC. INLET 43RD AVE NE RE: 124.45 IE: 122.20	CB 6 - W/ OWS WEST ALLEY RE: 124.30 IE: 121.50	CB 11 - TYPE 1L W/ OWS RE: 124.19 IE: 121.29 (SE IN) IE: 121.25 (NW OUT)
CB 3 - TYPE 1 43RD AVE NE RE: 124.15 IE: 121.90	CB 7 - TYPE 1L W/OVERFLOW RE: 124.52 IE: 121.36 (E OUT) IE: 121.45 (W IN)	CB 12 - TYPE 1L W/ OWS RE: 124.25 IE: 121.25
CI 4A - CONC. INLET 172ND STREET NE RE: 124.60 IE: 121.58	CB 8 - TYPE 1L W/ OWS 43RD AVE NE RE: 124.16 IE: 121.54	CB 13 - TYPE 1L W/OVERFLOW RE: 124.35 IE: 121.25
CB 4 - TYPE 1 172ND STREET NE RE: 124.10 IE: 121.05	CB 9 - TYPE 1L W/OVERFLOW RE: 124.35 IE: 121.25	CB 14 - TYPE 1L W/OWS RE: 124.25 IE: 121.25

STORM PIPES (EXISTING)				
HDPE UNLESS OTHERWISE NOTED				
FROM	TO	LENGTH	SIZE	SLOPE
CI 1A	CB 1	35'	12"	0.6%
CB 1	CB 2	84'	12"	0.5%
CI 3A	CB 3	35'	12"	0.6%
CB 3	CB 2	84'	12"	0.5%
CB 2	WQ TRNCH #1	24'	12"	0.6%
WQ TRNCH #1	CB 13	5'	12"	0.0%
CB 13	MAIN TRNCH #1	5'	12"	0.0%
CB 12	WQ TRNCH #1	5'	12"	0.0%
CB 14	WQ TRNCH #1	5'	12"	0.0%
CI 10A	CB 10	98'	12"	0.7%
CB 10	WQ TRNCH #2	5'	12"	0.0%
CI 11A	CB 11	49'	12"	1.0%
CB 11	WQ TRNCH #2	5'	12"	0.0%
WQ TRNCH #2	CB 9	19'	12"	0.0%
CB 9	MAIN TRNCH #2	5'	12"	0.0%
CB 8	WQ TRNCH #3	20'	12"	1.0%
CB 6	WQ TRNCH #3	25'	12"	1.0%
WQ TRNCH #3	CB 7	5'	12"	0.0%
CB 7	WQ TRNCH #3	5'	12"	0.0%
CI 6A	CB 6	111'	12"	0.6%
CI 4A	CB 4	102'	12"	0.5%
CB 4	CB 5	70'	12"	0.5%
CB 5	EX. CB	40'	12"	1.4%

NOTES:

- WQ** WATER QUALITY: EXISTING, UNDER PAVEMENT SAND FILTER WITH INFILTRATION CAPACITY.
- IG** INFILTRATION GALLERY: EXISTING, UNDER PAVEMENT INFILTRATION GALLERY/TRENCH

EASEMENT DIMENSIONS AND REFERENCES ON EASEMENT SHEET THIS SET

DATUM NAVD88
BENCH PROJECT BENCHMARK - FIRE HYDRANT LOCATED AT THE N.W. CORNER OF SUBJECT PARCEL AS SHOWN HEREON. N.W. TOP BONNET BOLT ELEV. = 126.28 FEET NAVD88

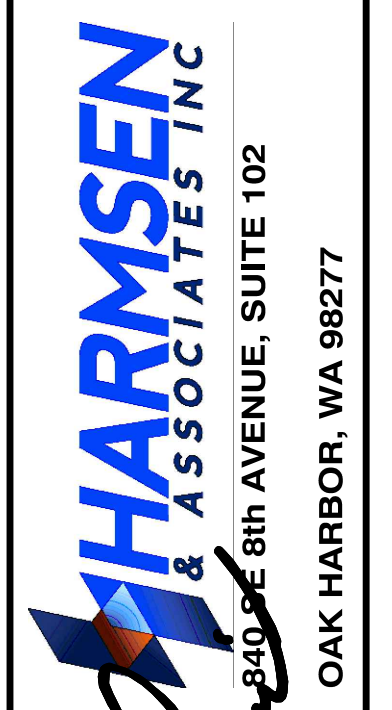
VERTICAL DATUM BASED ON A GPS TIE TO SNOHOMISH COUNTY SURVEY CONTROL #1168.

NAVD88 - 3.70 FEET = NGVD29

LINE MEASURES 1" AT FULL SIZE PLOT
 LINE IS OTHER THAN 1", ADJUST SCALE ACCORDINGLY



ENGINEERS SURVEYORS
 (360) 675-5973
 (360) 794-7811
 FAX: (360) 675-7255



HERITAGE BANK SHORT PLAT
CITY OF ARLINGTON
EXISTING CONDITIONS

DRAWN BY: JB
CHKD BY: MER
DATE: 12/13/2019

15-282

Know what's below
 Call before you dig

C2

P:\Work\Projects\2015\15-282 Heritage Bank\CED\DWG\15-282_SP_BASE.DWG\TAB.C2 EX COND modified by MichaelR on Dec 13, 2019 - 16:26