



Speed Enforcement Evaluator

Location

6900 211TH PL NE

Closest Cross Street

67TH AVE NE

Analysis Dates

Start: 10/5/2019

End: 10/8/2019

Equipment Used

COVERT RADAR

Installed By

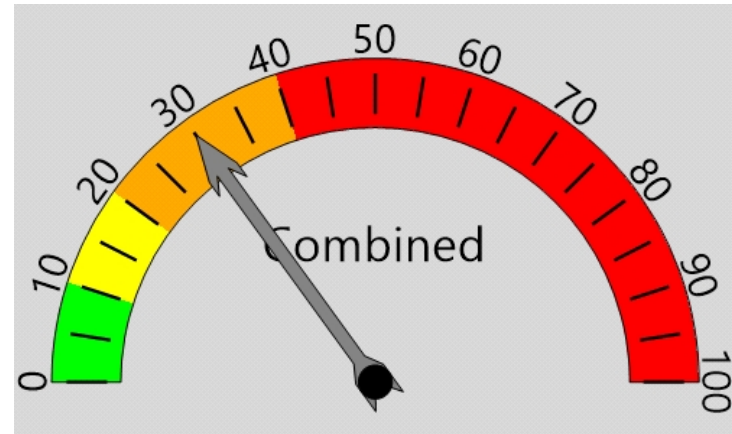
VENTURA

Requested By

PUBLIC REQUEST

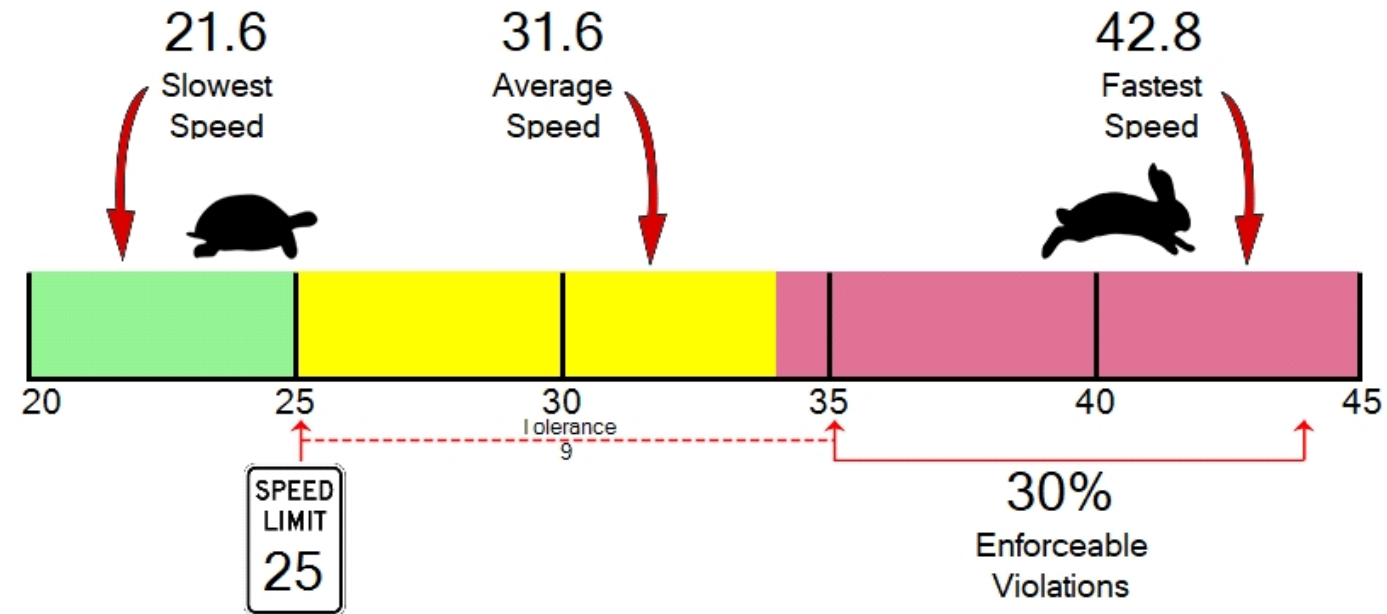
Total Percentage of Enforceable Violations

Posted Speed Limit 25 MPH
 Enforcement Tolerance 9 MPH
 Enforcement Limit Greater than 34 MPH



Percent Speeding: 30%

Rating: Medium





ARLINGTON POLICE DEPARTMENT

110 East 3rd Street
Arlington, WA 98223
(360) 403-3400

Vehicle Totals - Combined

<= 2	<= 4	<= 6	<= 8	<= 10	<= 12	<= 14	<= 16	<= 18	<= 20	<= 22	<= 24	<= 26	> 26
0	0	0	2	2	3	4	8	7	24	62	172	465	9657

Vehicle Totals - Direction X, Lane 1

<= 2	<= 4	<= 6	<= 8	<= 10	<= 12	<= 14	<= 16	<= 18	<= 20	<= 22	<= 24	<= 26	> 26
0	0	0	2	1	3	2	4	4	8	44	124	272	5950

Vehicle Totals - Direction X, Lane 2

<= 2	<= 4	<= 6	<= 8	<= 10	<= 12	<= 14	<= 16	<= 18	<= 20	<= 22	<= 24	<= 26	> 26
0	0	0	0	1	0	2	4	3	16	18	48	193	3707