

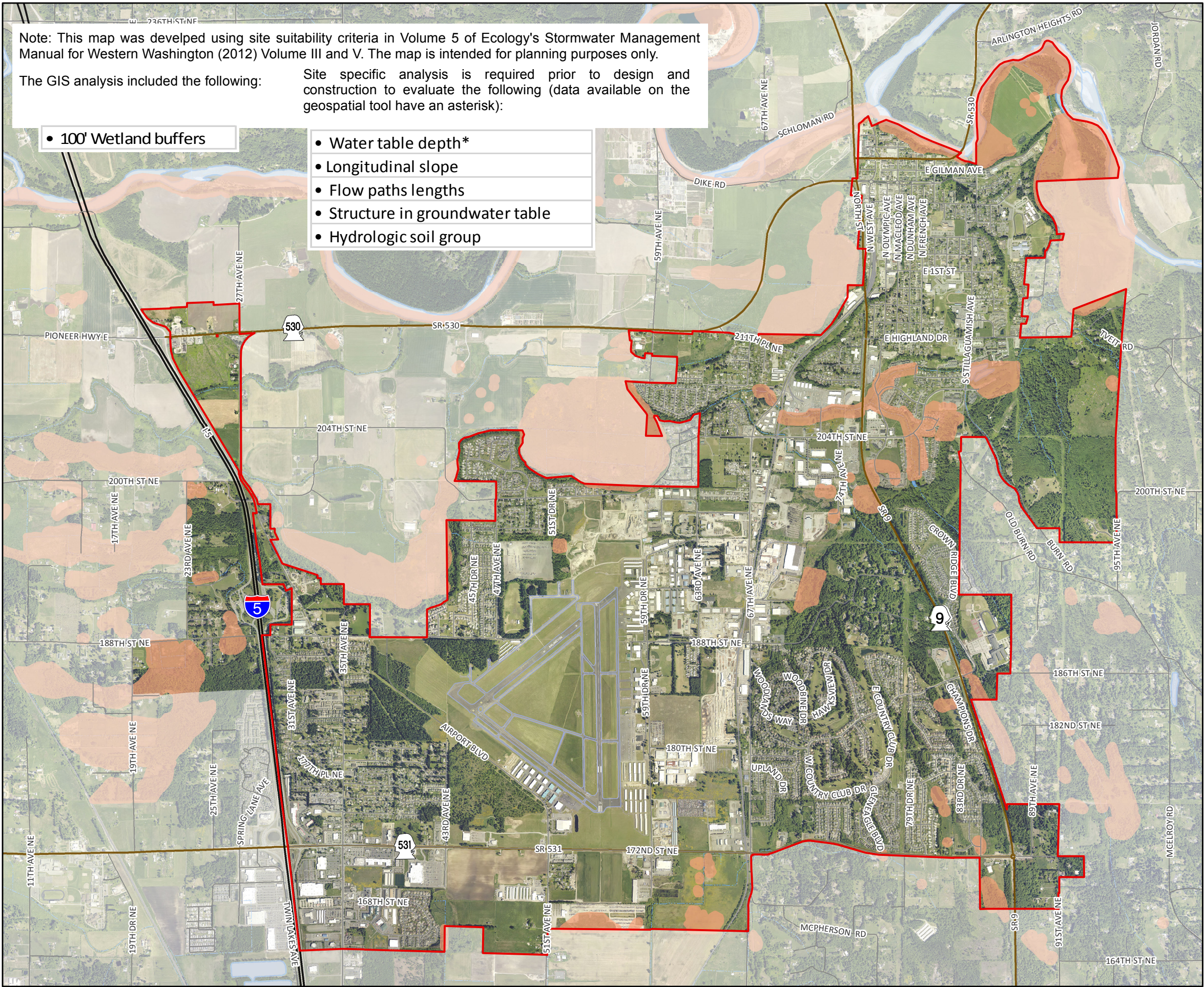
Note: This map was developed using site suitability criteria in Volume 5 of Ecology's Stormwater Management Manual for Western Washington (2012) Volume III and V. The map is intended for planning purposes only.

The GIS analysis included the following:

Site specific analysis is required prior to design and construction to evaluate the following (data available on the geospatial tool have an asterisk):

• 100' Wetland buffers



- Water table depth\*
- Longitudinal slope
- Flow paths lengths
- Structure in groundwater table
- Hydrologic soil group



City of Arlington

## Storm BMP Site Suitability Criteria Table 9 - Aboveground Sand Filtration

### Legend

-  Sites not suitable for aboveground sand filtration
-  State Highway
-  State Route
-  Streets
-  Rivers; Ponds
-  Streams
-  Arlington City Limits



Streams and waterbodies courtesy of Snohomish County  
Dept of Information Systems, December 2009.

Aerial flown in summer 2012.

Scale:  
1 in = 2,500 feet

Date:  
7/30/2015

File:  
Table9\_11x17\_15

Drawn by:  
kdh

Maps and GIS data are distributed "AS-IS" without warranties of any kind, either express or implied, including but not limited to warranties of suitability for a particular purpose or use. Map data are compiled from a variety of sources which may contain errors and users who rely upon the information do so at their own risk. Users agree to indemnify, defend, and hold harmless the City of Arlington for any and all liability of any nature arising out of or resulting from the lack of accuracy or correctness of the data, or the use of the data presented in the maps.