

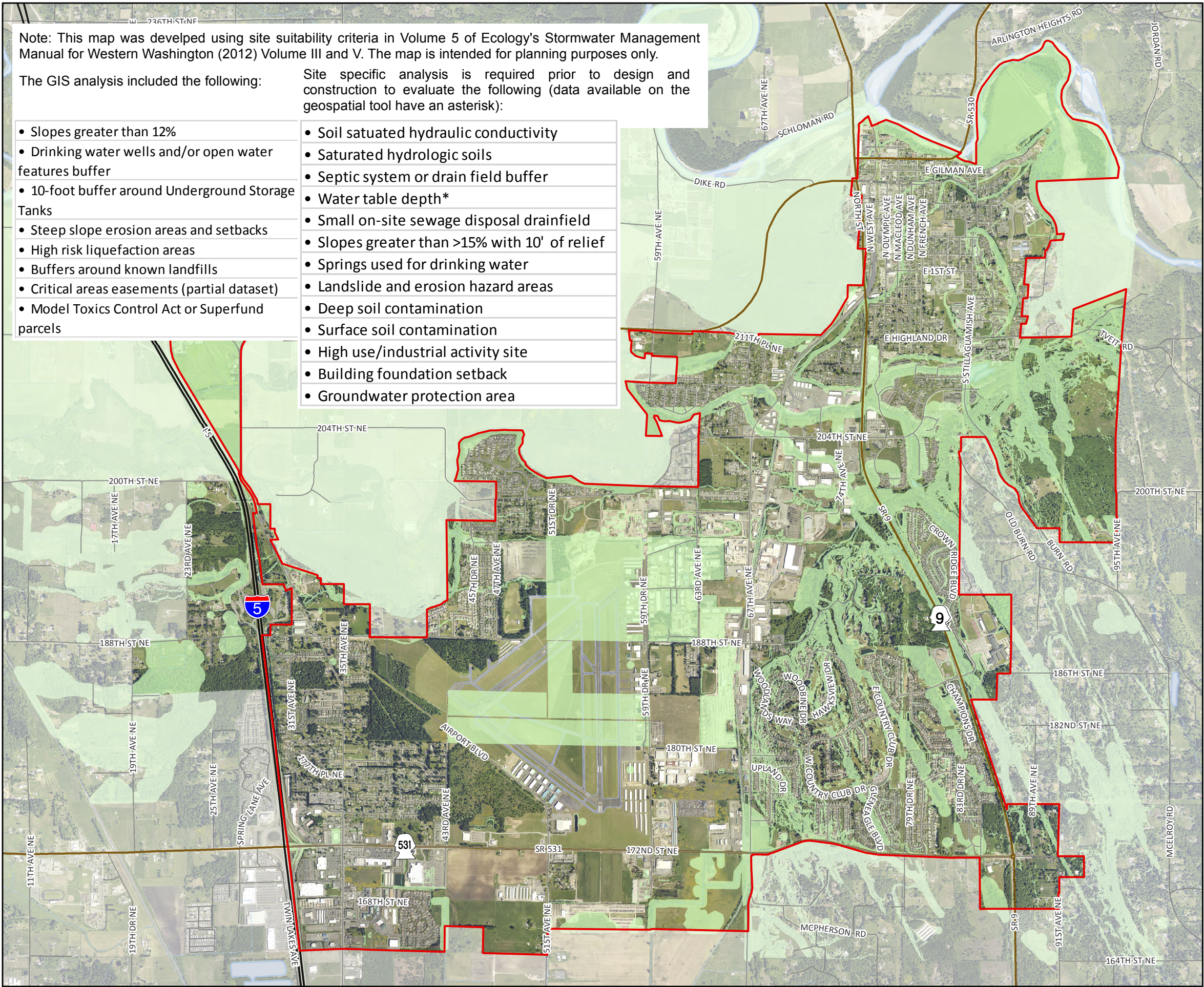
Note: This map was developed using site suitability criteria in Volume 5 of Ecology's Stormwater Management Manual for Western Washington (2012) Volume III and V. The map is intended for planning purposes only.

The GIS analysis included the following:

- Slopes greater than 12%
- Drinking water wells and/or open water features buffer
- 10-foot buffer around Underground Storage Tanks
- Steep slope erosion areas and setbacks
- High risk liquefaction areas
- Buffers around known landfills
- Critical areas easements (partial dataset)
- Model Toxics Control Act or Superfund parcels

Site specific analysis is required prior to design and construction to evaluate the following (data available on the geospatial tool have an asterisk):

- Soil satuated hydraulic conductivity
- Saturated hydrologic soils
- Septic system or drain field buffer
- Water table depth*
- Small on-site sewage disposal drainfield
- Slopes greater than >15% with 10' of relief
- Springs used for drinking water
- Landslide and erosion hazard areas
- Deep soil contamination
- Surface soil contamination
- High use/industrial activity site
- Building foundation setback
- Groundwater protection area



City of Arlington

Storm BMP Site Suitability Criteria
Table 4 - Permeable Pavement

Legend

- Sites not suitable for permeable pavement
- State Highway
- State Route
- Streets
- Rivers; Ponds
- Streams
- Arlington City Limits



Streams and waterbodies courtesy of Snohomish County
Dept of Information Systems, December 2009.

Aerial flown in summer 2012.

Scale:
1 in = 2,500 feet

Date:
7/29/2015

File:
Table4_11x17_15

Drawn by:
kdh

Maps and GIS data are distributed "AS-IS" without warranties of any kind, either express or implied, including but not limited to warranties of suitability for a particular purpose or use. Map data are compiled from a variety of sources which may contain errors and users who rely upon the information do so at their own risk. Users agree to indemnify, defend, and hold harmless the City of Arlington for any and all liability of any nature arising out of or resulting from the lack of accuracy or correctness of the data, or the use of the data presented in the maps.