



City of Arlington Preliminary Site Assessment

SITE INFORMATION



Figure 1. Location Map.

Parcel Number:	31051600100300
Parcel Area (acres):	28
Site Address:	4420 TO 4425 CEMETERY RD
Property Owner:	HOGGARTH JACK & MARILYN

Maps and GIS data are distributed "AS-IS" without warranties of any kind, either express or implied, including but not limited to warranties of suitability for a particular purpose or use. Map data are compiled from a variety of sources which may contain errors and users who rely upon the information do so at their own risk. Users agree to indemnify, defend, and hold harmless the City of Arlington for any and all liabilities of any nature arising out of or resulting from the lack of accuracy or correctness of the data, or the use of the data presented in the maps.

SITE CHARACTERISTICS

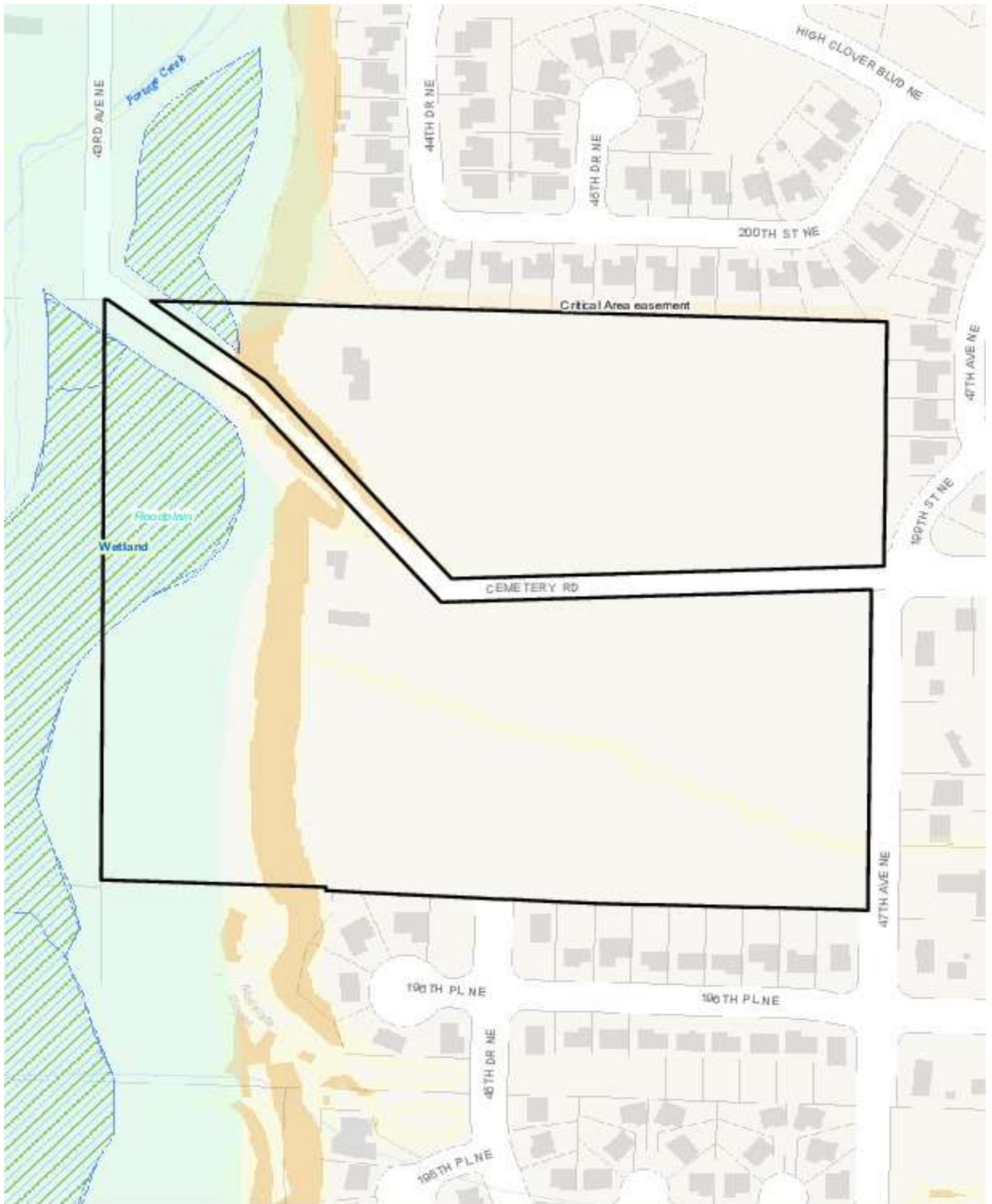
Percent Saturated/Wetland Soils Onsite			USGS Aquifer Sensitivity	Low:	
Slopes Onsite	0 to 8%	85.6%		Medium:	2.3%
	8 to 12%	2.8%		High:	97.7%
	12 to 15%	1.5%	Drinking Water Well Onsite?		No
	15 to 20%	2.4%	Soil Contamination Area Onsite?		No
	20 to 33%	2.2%	UST Onsite?		No
	> 33%	5.5%	Septic System Onsite?		No

Note: Not all criteria used in the preliminary BMP site assessments are summarized in this report. For a full list of criteria analyzed for each BMP please see the BMP Preliminary Site Assessment criteria tables.

PERCENT OF SITE POTENTIALLY NOT SUITABLE FOR BMP IMPLEMENTATION

Infiltrating Bioretention Cell/Swale	0%	Permeable Pavement	0%	Underground Detention and Treatment	On a site by site basis
Infiltrating Bioretention Planter	0%	Ponds and Wetlands	14%	Aboveground Sand Filtration	14%
Non-Infiltrating Bioretention	0%	Basic Filter Strips	On a site by site basis	Infiltration BMPs	14%
		Biofiltration Swales	On a site by site basis	Dispersion BMPs	14%

CRITICAL AREAS MAP



UTILITIES MAP

