



City of Arlington Preliminary Site Assessment

SITE INFORMATION

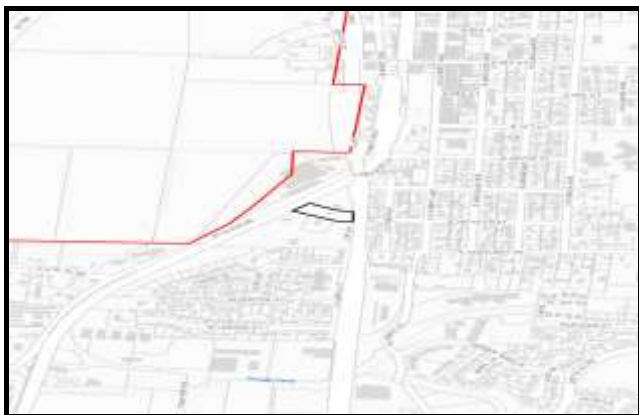


Figure 1. Location Map.

Parcel Number:

31051100202300

Parcel Area (acres):

1

Site Address:

400 FIR LN

Property Owner:

HECLA CURTIS C

Maps and GIS data are distributed "AS-IS" without warranties of any kind, either express or implied, including but not limited to warranties of suitability for a particular purpose or use. Map data are compiled from a variety of sources which may contain errors and users who rely upon the information do so at their own risk. Users agree to indemnify, defend, and hold harmless the City of Arlington for any and all liabilities of any nature arising out of or resulting from the lack of accuracy or correctness of the data, or the use of the data presented in the maps.

SITE CHARACTERISTICS

Percent Saturated/Wetland Soils Onsite

USGS Aquifer
Sensitivity

Low:

Medium:

High:

100.0%

Slopes Onsite

0 to 8%

61.6%

8 to 12%

4.7%

12 to 15%

1.7%

15 to 20%

4.3%

20 to 33%

8.9%

> 33%

18.8%

Drinking Water Well Onsite?

No

Soil Contamination Area Onsite?

No

UST Onsite?

No

Septic System Onsite?

Yes

Note: Not all criteria used in the preliminary BMP site assessments are summarized in this report. For a full list of criteria analyzed for each BMP please see the BMP Preliminary Site Assessment criteria tables.

PERCENT OF SITE POTENTIALLY NOT SUITABLE FOR BMP IMPLEMENTATION

Infiltrating
Bioretention Cell/Swale

1%

Permeable Pavement

34%

Underground Detention
and Treatment

On a site by
site basis

Infiltrating
Bioretention Planter

1%

Ponds and Wetlands

On a site by
site basis

Aboveground Sand
Filtration

On a site by
site basis

Non-Infiltrating
Bioretention

1%

Basic Filter Strips

On a site by
site basis

Infiltration BMPs

On a site by
site basis

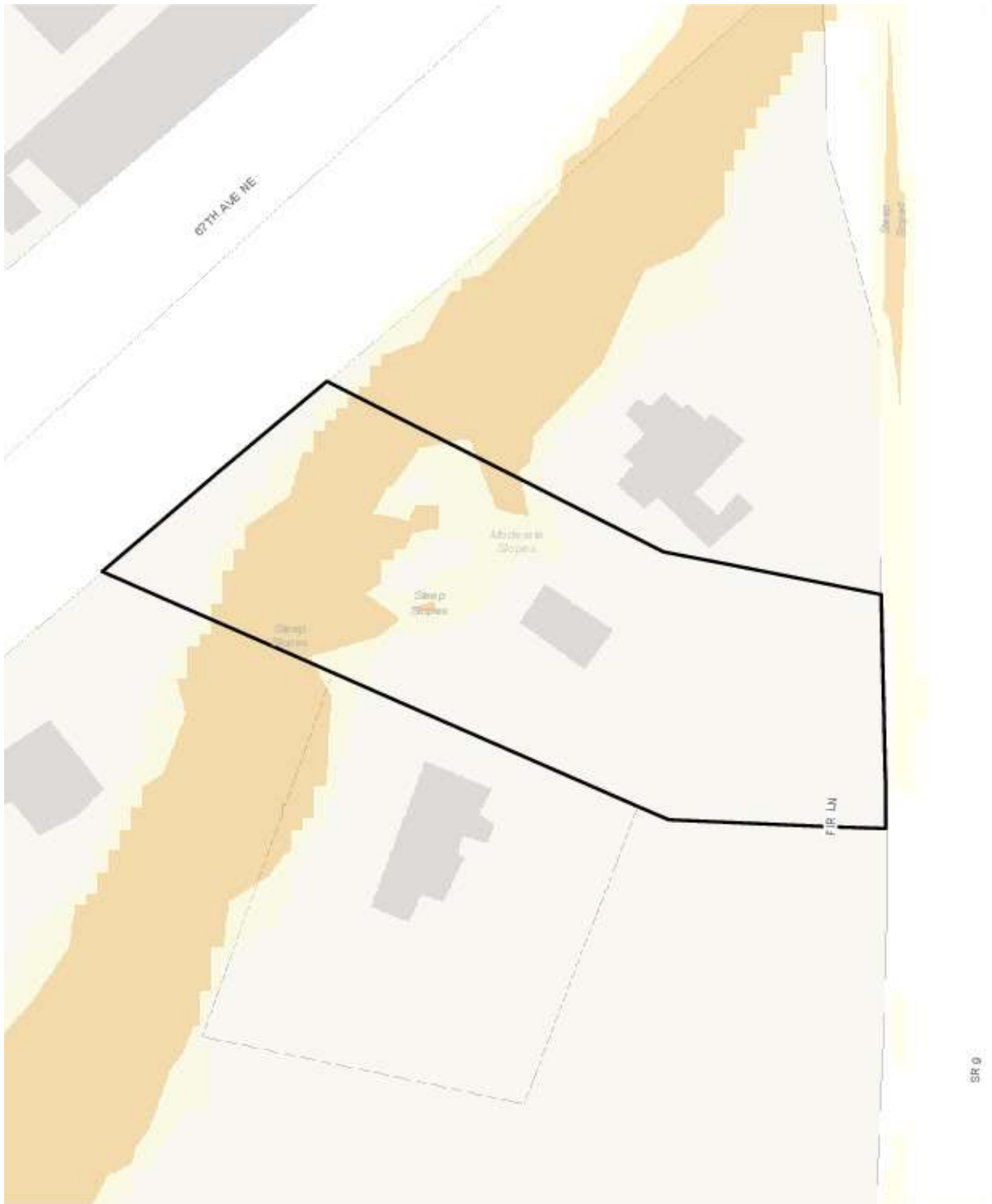
Biofiltration Swales

On a site by
site basis

Dispersion BMPs

On a site by
site basis

CRITICAL AREAS MAP



UTILITIES MAP

