



City of Arlington Preliminary Site Assessment

SITE INFORMATION



Parcel Number:	31050700100500
Parcel Area (acres):	35
Site Address:	1707 PIONEER HW E
Property Owner:	STROTZ FAMILY FARM TRUST

Maps and GIS data are distributed "AS-IS" without warranties of any kind, either express or implied, including but not limited to warranties of suitability for a particular purpose or use. Map data are compiled from a variety of sources which may contain errors and users who rely upon the information do so at their own risk. Users agree to indemnify, defend, and hold harmless the City of Arlington for any and all liabilities of any nature arising out of or resulting from the lack of accuracy or correctness of the data, or the use of the data presented in the maps.

Figure 1. Location Map.

SITE CHARACTERISTICS

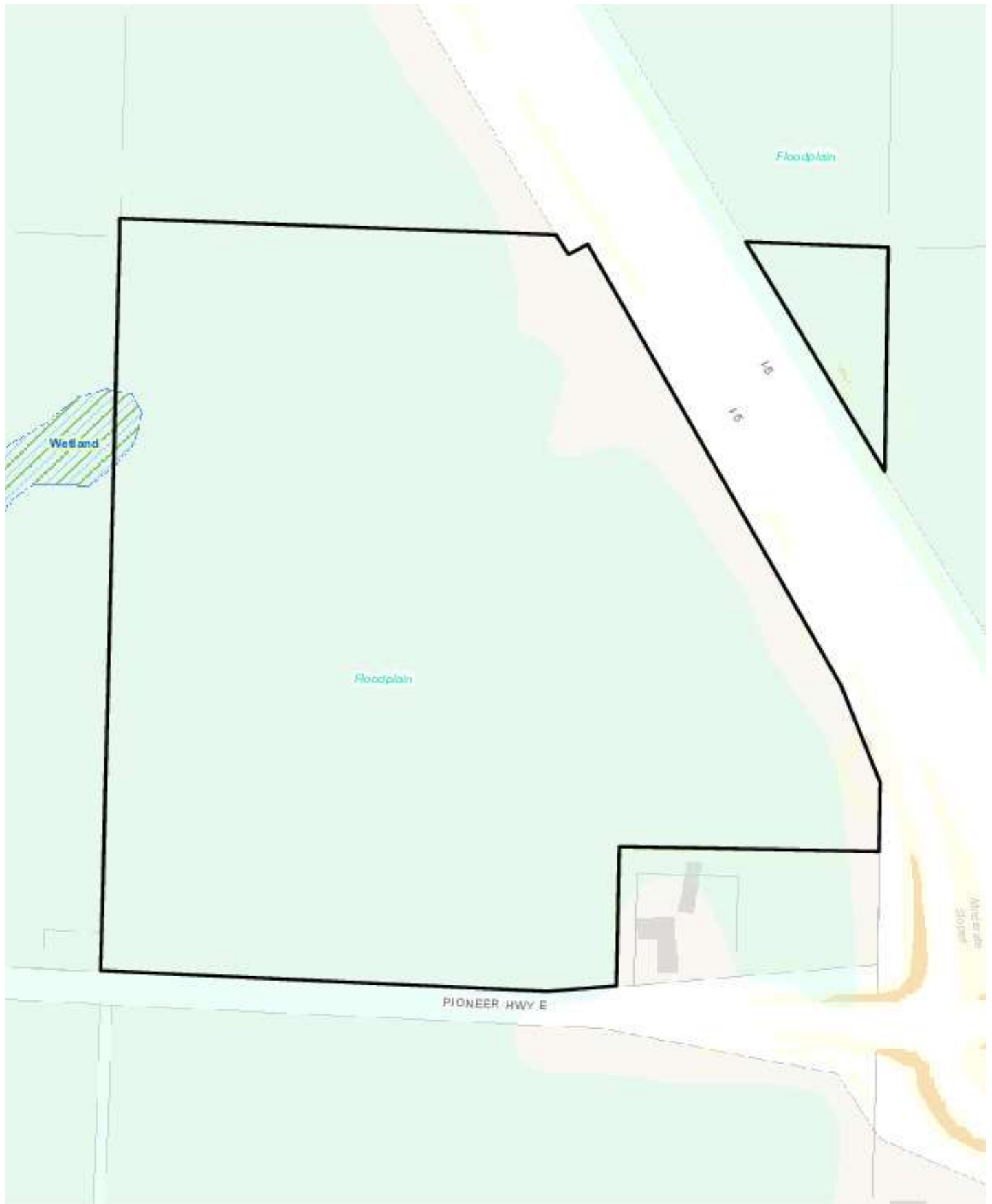
Percent Saturated/Wetland Soils Onsite			USGS Aquifer Sensitivity	Low:	
Slopes Onsite	0 to 8%	97.8%		Medium:	9.4%
	8 to 12%	1.0%		High:	90.6%
	12 to 15%	0.3%	Drinking Water Well Onsite?		No
	15 to 20%	0.4%	Soil Contamination Area Onsite?		Yes
	20 to 33%	0.5%	UST Onsite?		Yes
	> 33%	0.0%	Septic System Onsite?		Yes

Note: Not all criteria used in the preliminary BMP site assessments are summarized in this report. For a full list of criteria analyzed for each BMP please see the BMP Preliminary Site Assessment criteria tables.

PERCENT OF SITE POTENTIALLY NOT SUITABLE FOR BMP IMPLEMENTATION

Infiltrating Bioretention Cell/Swale	On a site by site basis	Permeable Pavement	On a site by site basis	Underground Detention and Treatment	On a site by site basis
Infiltrating Bioretention Planter	On a site by site basis	Ponds and Wetlands	3%	Aboveground Sand Filtration	3%
Non-Infiltrating Bioretention	0%	Basic Filter Strips	On a site by site basis	Infiltration BMPs	3%
		Biofiltration Swales	On a site by site basis	Dispersion BMPs	3%

CRITICAL AREAS MAP



UTILITIES MAP

