



# City of Arlington Preliminary Site Assessment

## SITE INFORMATION



Figure 1. Location Map.

Parcel Number:	31050100201900
Parcel Area (acres):	127
Site Address:	E GILMAN AVE
Property Owner:	ARLINGTON CITY OF

Maps and GIS data are distributed "AS-IS" without warranties of any kind, either express or implied, including but not limited to warranties of suitability for a particular purpose or use. Map data are compiled from a variety of sources which may contain errors and users who rely upon the information do so at their own risk. Users agree to indemnify, defend, and hold harmless the City of Arlington for any and all liabilities of any nature arising out of or resulting from the lack of accuracy or correctness of the data, or the use of the data presented in the maps.

## SITE CHARACTERISTICS

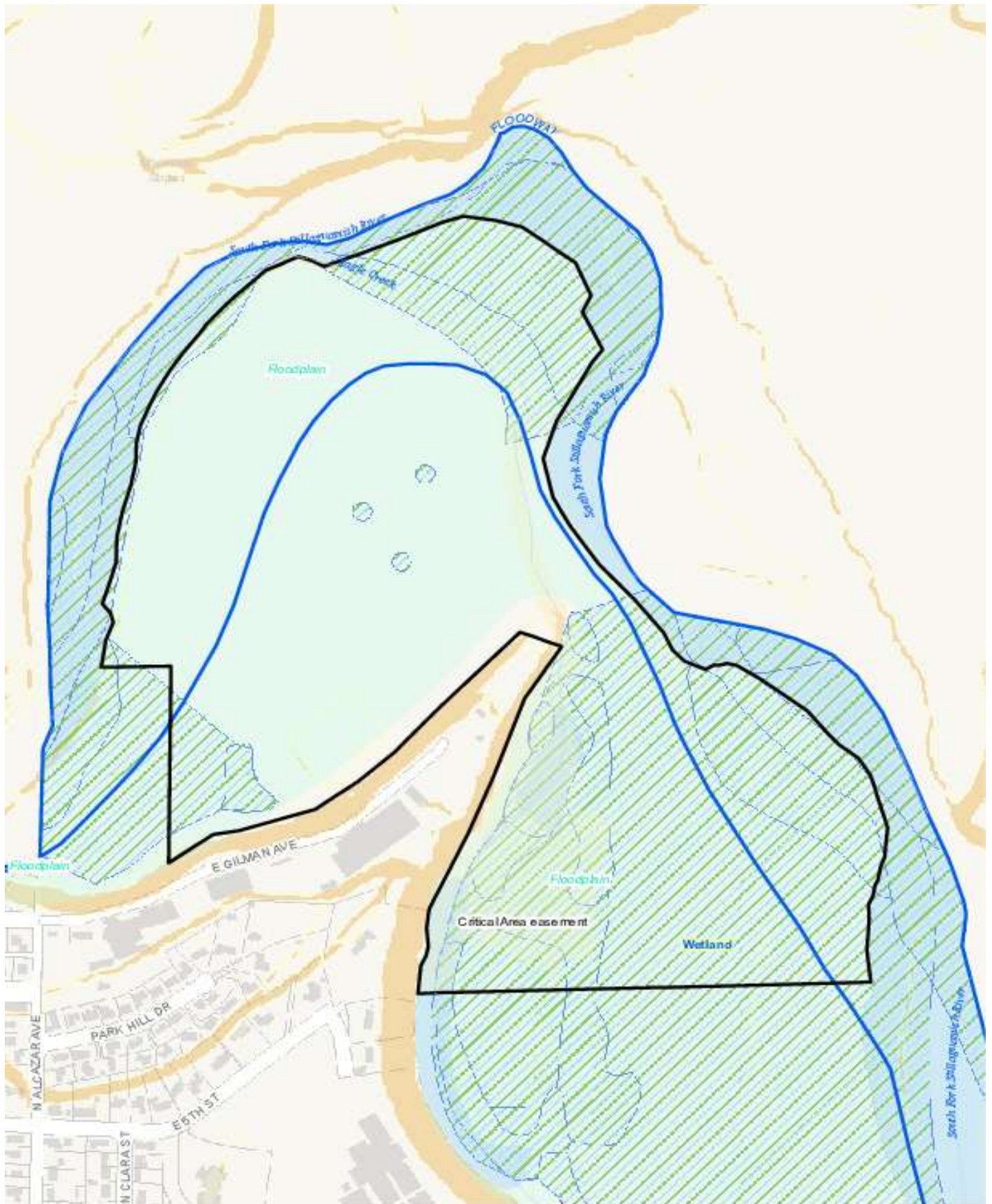
Percent Saturated/Wetland Soils Onsite			USGS Aquifer Sensitivity	Low:	
Slopes Onsite	0 to 8%	89.5%		Medium:	8.5%
	8 to 12%	3.9%		High:	91.5%
	12 to 15%	1.9%	Drinking Water Well Onsite?		No
	15 to 20%	2.2%	Soil Contamination Area Onsite?		No
	20 to 33%	2.0%	UST Onsite?		No
> 33%	0.4%		Septic System Onsite?		No

Note: Not all criteria used in the preliminary BMP site assessments are summarized in this report. For a full list of criteria analyzed for each BMP please see the BMP Preliminary Site Assessment criteria tables.

## PERCENT OF SITE POTENTIALLY NOT SUITABLE FOR BMP IMPLEMENTATION

Infiltrating Bioretention Cell/Swale	0%	Permeable Pavement	0%	Underground Detention and Treatment	On a site by site basis
Infiltrating Bioretention Planter	0%	Ponds and Wetlands	2%	Aboveground Sand Filtration	38%
Non-Infiltrating Bioretention	0%	Basic Filter Strips	On a site by site basis	Infiltration BMPs	38%
		Biofiltration Swales	On a site by site basis	Dispersion BMPs	38%

# CRITICAL AREAS MAP



# UTILITIES MAP

