



City of Arlington Preliminary Site Assessment

SITE INFORMATION

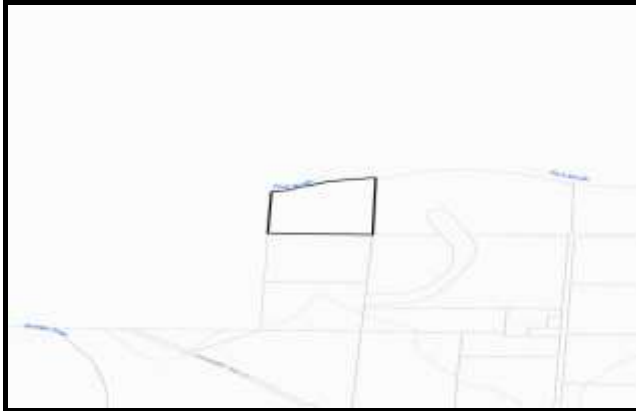


Figure 1. Location Map.

Parcel Number:	31040100400400
Parcel Area (acres):	17
Site Address:	UNKNOWN UNKNOWN
Property Owner:	KRAETZ A LOREN

Maps and GIS data are distributed "AS-IS" without warranties of any kind, either express or implied, including but not limited to warranties of suitability for a particular purpose or use. Map data are compiled from a variety of sources which may contain errors and users who rely upon the information do so at their own risk. Users agree to indemnify, defend, and hold harmless the City of Arlington for any and all liabilities of any nature arising out of or resulting from the lack of accuracy or correctness of the data, or the use of the data presented in the maps.

SITE CHARACTERISTICS

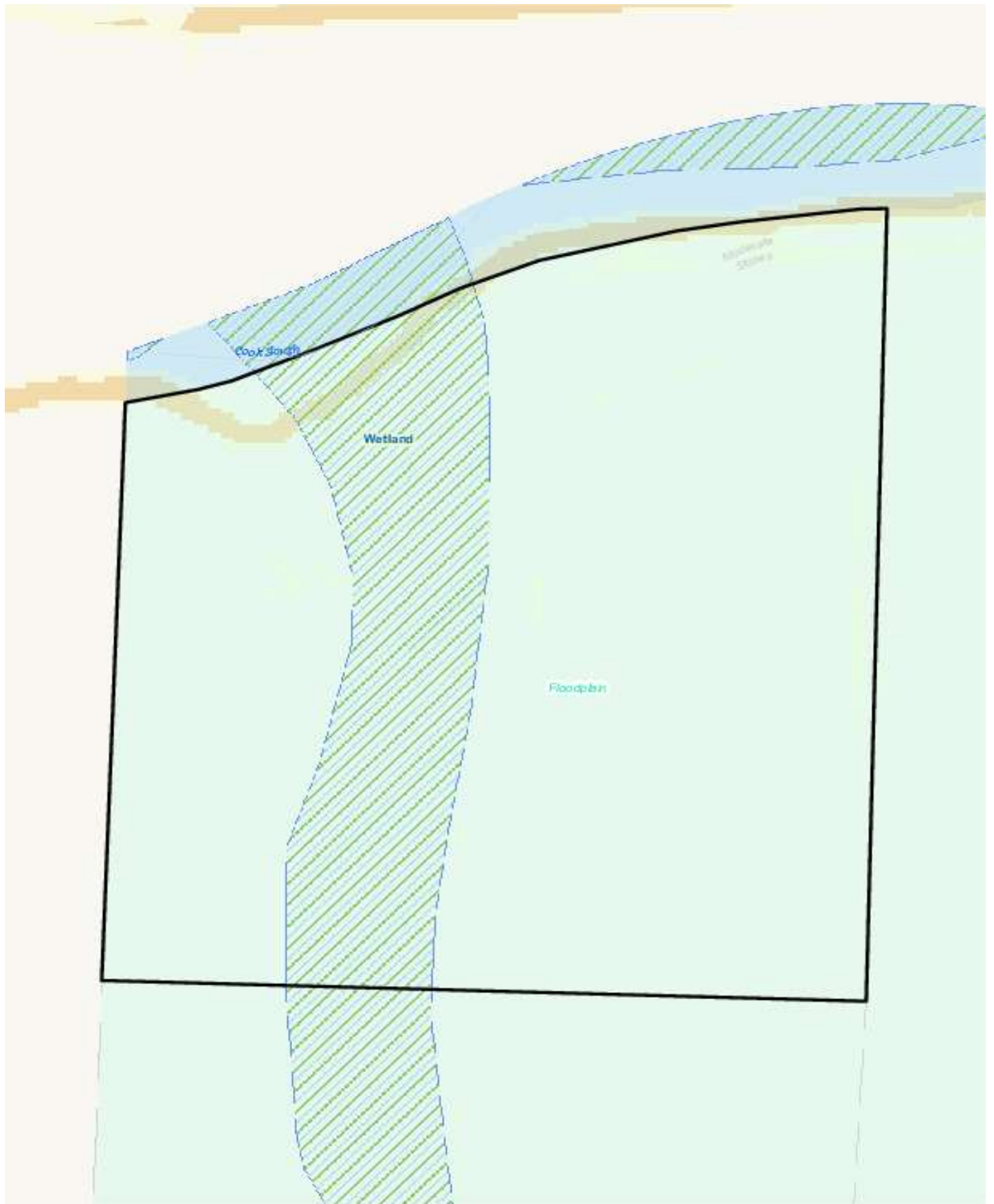
Percent Saturated/Wetland Soils Onsite			USGS Aquifer Sensitivity	Low:	
Slopes Onsite	0 to 8%	84.0%		Medium:	
	8 to 12%	8.2%		High:	100.0%
	12 to 15%	2.6%	Drinking Water Well Onsite?		No
	15 to 20%	2.0%	Soil Contamination Area Onsite?		No
	20 to 33%	1.2%	UST Onsite?		No
	> 33%	1.9%	Septic System Onsite?		No

Note: Not all criteria used in the preliminary BMP site assessments are summarized in this report. For a full list of criteria analyzed for each BMP please see the BMP Preliminary Site Assessment criteria tables.

PERCENT OF SITE POTENTIALLY NOT SUITABLE FOR BMP IMPLEMENTATION

Infiltrating Bioretention Cell/Swale	On a site by site basis	Permeable Pavement	On a site by site basis	Underground Detention and Treatment	On a site by site basis
Infiltrating Bioretention Planter	On a site by site basis	Ponds and Wetlands	54%	Aboveground Sand Filtration	50%
Non-Infiltrating Bioretention	0%	Basic Filter Strips	On a site by site basis	Infiltration BMPs	50%
		Biofiltration Swales	On a site by site basis	Dispersion BMPs	50%

CRITICAL AREAS MAP



UTILITIES MAP

