



www.psesurvey.com
EMAIL: pse@psurvey.com

PACIFIC SURVEY & ENGINEERING INC
1812 CORNWALL, BELLINGHAM, WA 98225 PHONE: 671.7387 FAX: 671.4685

SITE CIVIL CONSTRUCTION PLANS WHIDBEY ISLAND BANK

SITUATE IN A PORTION OF THE NE 1/4 OF THE NW 1/4 OF SECTION 28, TOWNSHIP 31 NORTH, RANGE 5 EAST, W.M.

GENERAL NOTES

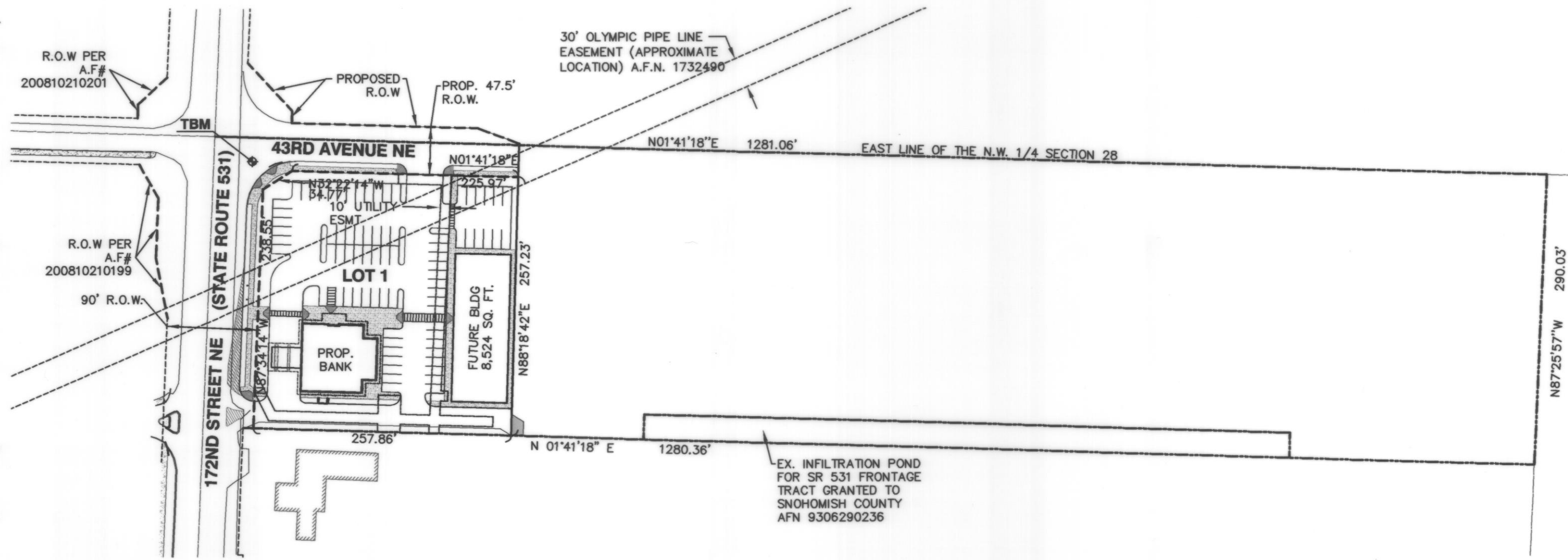
- ALL WORK AND MATERIALS SHALL BE IN ACCORDANCE WITH THE "STANDARD SPECIFICATIONS FOR ROAD, BRIDGE AND MUNICIPAL CONSTRUCTION," WASHINGTON STATE DEPARTMENT OF TRANSPORTATION AND AMERICAN PUBLIC WORKS ASSOCIATION, WASHINGTON STATE CHAPTER, MOST RECENT EDITION, EXCEPT WHERE MODIFIED BY THE LATEST EDITION OF THE CITY OF ARLINGTON CONSTRUCTION STANDARDS AND SPECIFICATIONS.
- AN APPROVED COPY OF CONSTRUCTION PLANS MUST BE ON SITE WHENEVER CONSTRUCTION IS IN PROGRESS.
- IT SHALL BE THE SOLE RESPONSIBILITY OF THE CONTRACTOR TO OBTAIN STREET USE AND ANY OTHER RELATED PERMITS PRIOR TO ANY CONSTRUCTION ACTIVITY IN THE CITY RIGHT-OF-WAY.
- PRIOR TO ANY CONSTRUCTION ACTIVITY, THE CITY OF ARLINGTON PUBLIC WORKS DEPARTMENT, (360)403-3500, MUST BE CONTACTED FOR A PRECONSTRUCTION MEETING. CONTACT CITY OF MARYSVILLE (360) 651-5100 PRIOR TO WATER/SEWER INSTALLATION.
- ALL LOCATIONS OF EXISTING UTILITIES HAVE BEEN ESTABLISHED BY FIELD SURVEY OR OBTAINED FROM AVAILABLE RECORDS AND SHOULD THEREFORE BE CONSIDERED APPROXIMATE ONLY AND NOT NECESSARILY COMPLETE. IT IS THE SOLE RESPONSIBILITY OF THE CONTRACTOR TO INDEPENDENTLY VERIFY THE ACCURACY OF ALL UTILITY LOCATIONS, AND TO FURTHER DISCOVER AND AVOID ANY OTHER UTILITIES WHICH MAY BE AFFECTED BY THIS WORK. THE CONTRACTOR SHALL CONTACT THE UTILITIES UNDERGROUND LOCATION SERVICE (1-800-424-5555) PRIOR TO CONSTRUCTION. THE OWNER OR THEIR REPRESENTATIVE SHALL BE IMMEDIATELY CONTACTED IF A UTILITY CONFLICT EXISTS.
- ALL MATERIALS SHALL BE NEW AND UNDAMAGED, OF AN APPROVED BRAND, WITH REPLACEMENT AND REPAIR PARTS READILY AVAILABLE FROM THE ARLINGTON/ EVERETT/ SEATTLE AREA.
- ALL MATERIALS SHALL BE APPROVED BY THE CITY PRIOR TO INSTALLATION. WATER/SEWER MATERIALS MUST BE APPROVED BY THE CITY OF MARYSVILLE.
- ALL PUBLIC WATER, SEWER, AND STORM DRAINAGE PIPING NOT IN PUBLIC RIGHT-OF-WAY REQUIRES 10 FOOT WIDE PAVEMENT EASEMENTS GRANTED TO THE CITIES OF ARLINGTON AND MARYSVILLE.
- AS-BUILT PLANS SHALL BE SUBMITTED FOR ALL DEVELOPMENTS, SHORT PLATS, SUBDIVISIONS, AND ANY OTHER CONSTRUCTION RELATING TO THE CITY OF ARLINGTON STREETS, DRAINAGE, AND UTILITY SYSTEMS. THE CITY OF MARYSVILLE WILL REQUIRE WATER/SEWER AS-BUILTS.
- STANDARD PLAN REFERENCES ARE FOR CITY OF ARLINGTON CONSTRUCTION STANDARDS. CONTRACTOR SHALL MAINTAIN A COPY OF THE STANDARDS ON SITE WHILE CONSTRUCTION IS IN PROGRESS. WATER & SEWER SHALL BE CONSTRUCTED PER CITY OF MARYSVILLE STANDARDS.

WORK WITHIN EXISTING RIGHTS-OF-WAY

- AT THE PUBLIC WORKS DIRECTOR DISCRETION, PRIOR TO COMMENCING ANY CONSTRUCTION, PHOTOGRAPHS DEPICTING PRE-EXISTING ROADWAY CONDITIONS WILL BE REQUIRED EVERY 50 FEET IN PAVED AREAS OR ANY OTHER LOCATION AS SPECIFIED BY THE PUBLIC WORKS DIRECTOR. A DIGITAL CAMERA SHALL BE USED AND COLOR PICTURES PROVIDED ON CD, CATALOGUED AND CROSS-REFERENCED.
- SIGNING, FLAGGING AND TRAFFIC CONTROL SHALL BE IN ACCORDANCE WITH THE MOST CURRENT EDITION OF THESE STANDARDS, (SEE STANDARD TRAFFIC CONTROL PLANS IN SECTION 4) THE WSDOT TRAFFIC MANUAL, AND THE MANUAL OF UNIFORM TRAFFIC CONTROL DEVICES.
- ONE LANE OF TRAFFIC SHALL REMAIN OPEN AT ALL TIMES, ATTENDED BY FLAGGERS AND APPROPRIATE CONSTRUCTION SIGNING PROVIDED. THE ROAD SHALL BE RESTORED TO TWO-WAY TRAFFIC AT THE END OF EACH WORKING DAY. APPLICATION FOR TOTAL ROAD CLOSURES MUST BE FILED WITH THE CITY PUBLIC WORKS DEPARTMENT AT LEAST 5 DAYS PRIOR TO THE ANTICIPATED CLOSURE.
- EXISTING DRAINAGE DITCHES, CULVERTS, ETC., SHALL BE KEPT CLEAN AT ALL TIMES. TEMPORARY DIVERSION OF ANY DRAINAGE SYSTEM WILL NOT BE PERMITTED WITHOUT THE CONSENT OF THE PUBLIC WORKS DIRECTOR. ANY DRAINAGE CULVERT, CATCH BASIN, MANHOLE OR OTHER DRAINAGE STRUCTURE DISTURBED BY EXCAVATION SHALL BE REPLACED WITH NEW MATERIAL OR REPAIRED TO THE SATISFACTION OF THE PUBLIC WORKS DIRECTOR. TEMPORARY EROSION / SEDIMENTATION CONTROL MEASURES SHALL BE EMPLOYED TO PROTECT ADJACENT PROPERTY AND STORM DRAIN FACILITIES.
- GRAVEL SHOULDERS DISTURBED BY EXCAVATION SHALL BE SHAPED TO CITY STANDARDS AND PROVIDED WITH A MINIMUM OF 2 INCHES COMPACTED CRUSHED SURFACING TOP COURSE GRAVEL.
- IF IN THE OPINION OF THE PUBLIC WORKS DIRECTOR, WEATHER CONDITIONS DETERIORATE TO THE POINT WHERE THE TRAVELED ROADWAYS ARE UNSAFE FOR THE PUBLIC OR DETRIMENTAL TO THE RESTORATION OF THE ROADWAY, EXCAVATION SHALL CEASE IMMEDIATELY AND CLEANUP SHALL BE PROMPTLY ACCOMPLISHED.
- ALL PIPE OR OTHER MATERIAL STORED ALONG CITY RIGHT-OF-WAY MUST BE PLACED AT A SAFE DISTANCE FROM THE TRAVELED ROADWAY IN SUCH A MANNER AS TO AVOID FALLING ONTO THE ROADWAY.
- NO EXCESS OR UNSUITABLE MATERIAL SHALL BE WASTED ON CITY RIGHT-OF-WAY. ANY SUCH MATERIAL DUMPED ON PRIVATE PROPERTY MAY REQUIRE A GRADING PERMIT. VERIFICATION WITH CITY OF ARLINGTON PUBLIC WORKS DEPARTMENT IF REQUIRED.
- STREET SURFACE SHALL BE CLEANED AT THE END OF EACH DAY'S OPERATION WITH A POWER BROOM OR OTHER APPROVED MEANS.
- NO OPEN CUT CROSSING OF CITY ROADS OR STREETS SHALL BE MADE WITHOUT THE PRIOR APPROVAL OF THE PUBLIC WORKS DIRECTOR.
- MAXIMUM AMOUNT OF OPEN TRENCH ON STREETS SHALL BE 400 LINEAL FEET. AT THE END OF EACH DAY, ALL DITCHES MUST BE BACKFILLED OR COVERED WITH STEEL PLATES AND BARRICADED WITH FLASHING WARNING LIGHTS TO PREVENT PEOPLE OR ANIMALS FROM FALLING INTO THE TRENCH.
- FINAL CLEANUP INCLUDING COMPLETE RESTORATION OR SHOULDERS, CLEANING OF DITCHES, CULVERTS AND CATCH BASINS, AND REMOVAL OF LOOSE MATERIAL FROM BACK SLOPES OF DITCHES SHALL NOT EXCEED 1500 L.F. BEHIND EXCAVATING OPERATIONS AS REQUIRED BY THE PUBLIC WORKS DIRECTOR.
- THE PERMITEE WILL BE RESPONSIBLE TO COORDINATE WITH THE STATE DEPARTMENT OF NATURAL RESOURCES FOR ANY CONFLICT BETWEEN PERMIT WORK AND EXISTING MONUMENTATION.
- TO REMOVE EXISTING ASBESTOS CEMENT PIPE FROM TRENCHES, A FEE AND PERMIT IS REQUIRED FROM THE PUGET SOUND AIR POLLUTION CONTROL AGENCY. IN ADDITION, WASHINGTON STATE DEPARTMENT OF LABOR AND INDUSTRIES REQUIRES THAT OPERATORS REMOVING ASBESTOS CEMENT PIPE BE CERTIFIED.

CONSTRUCTION SEQUENCE AND SCHEDULE

- SCHEDULE PRE-CONSTRUCTION CONFERENCES WITH CITY OF ARLINGTON ENGINEERING AT (360) 403-3500 AND CITY OF MARYSVILLE AT (360) 651-5100.
- INSTALL TEMPORARY EROSION CONTROL FACILITIES.
- ROUGH GRADE SITE.
- EXCAVATE AND CONSTRUCT INFILTRATION TRENCHES.
- INSTALL STORM DRAINS AND UTILITIES. BLOCK INTAKES TO INFILTRATION TRENCHES.
- FINISH GRADE PARKING AREAS.
- INSTALL PAVEMENT.
- INSTALL LANDSCAPING.
- AFTER SITE HAS STABILIZED, REMOVE ACCUMULATED SEDIMENT FROM CATCH BASINS AND CULVERTS. REMOVE REMAINING TEMPORARY EROSION CONTROL FACILITIES.



SITE PLAN

SCALE: 1" = 100'

SHEET INDEX

- | | |
|---------|--|
| SHEET 1 | COVER SHEET |
| SHEET 2 | GRADING AND T.E.S.G. PLAN (NOT INCLUDED) |
| SHEET 3 | GRADING AND T.E.S.G. NOTES AND DETAILS (NOT INCLUDED) |
| SHEET 4 | DRAINAGE PLAN |
| SHEET 5 | DRAINAGE NOTES AND DETAILS |
| SHEET 6 | ROAD & STORM DRAINAGE PROFILES |
| SHEET 7 | ON-SITE PAVING PLAN/72ND ST & 43RD AVE FRONTAGE IMPROVEMENTS |
| SHEET 8 | LANDSCAPE PLAN (NOT INCLUDED) |

TRAFFIC SIGNAL INSTALLATION

AS A CONDITION OF THE UNDERLYING LAND USE PERMIT, A TRAFFIC SIGNAL SHALL BE INSTALLED AT THE INTERSECTION OF 172ND ST. N.E. & 43RD AVE. N.E. A SEPARATE SIGNALIZATION PLAN HAS BEEN PREPARED BY TRANSPORTATION SOLUTIONS, INC. (TSI) (425) 883-4134. WORK IN SR 531 RIGHT-OF-WAY MAY NOT BEGIN UNTIL APPROVAL OF THE SIGNALIZATION & CHANNELIZATION PLANS IS OBTAINED FROM WSDOT.

UTILITY EASEMENTS

THESE UTILITY EASEMENTS HAVE BEEN RESERVED FOR AND GRANTED TO ALL UTILITIES SERVING THE SUBJECT PROPERTY AND THEIR RESPECTIVE SUCCESSORS AND ASSIGNS, UNDER AND UPON THE FRONT TEN FEET PARALLEL WITH AND ADJOINING THE STREET FRONTAGE OF ALL LOTS AND TRACTS IN WHICH TO INSTALL, LAY, CONSTRUCT, RENEW, OPERATE AND MAINTAIN UNDERGROUND CONDUITS, CABLES, PIPES, AND WIRES, TOGETHER WITH THE OTHER NECESSARY FACILITIES AND EQUIPMENT, FOR THE PURPOSE OF SERVING THIS AND OTHER PROPERTY WITH UTILITY SERVICE, TOGETHER WITH THE RIGHT TO ENTER UPON THE PROPERTY AT ALL TIMES FOR THE PURPOSES HEREIN STATED. ALL UTILITY LINES SHALL BE PLACED UNDERGROUND. THESE EASEMENTS ENTERED UPON FOR THESE PURPOSES SHALL BE RESTORED AS NEAR AS POSSIBLE TO THEIR ORIGINAL CONDITION. THESE EASEMENTS SHALL PRECLUDE GRADING OR ANY RECONSTRUCTING OF THE LAND; PLACEMENT OF STRUCTURES, WELLS, LEACH FIELDS, AND ANY OTHER THING, EXCEPT UTILITY FACILITIES.

RELATED CONSTRUCTION PLANS

THE FOLLOWING PLANS RELATED TO THIS PROJECT HAVE BEEN PREPARED BY OTHERS OR BY HIGA BURKHOLDER FOR SUBMITTAL TO JURISDICTIONS OTHER THAN THE CITY OF ARLINGTON:

SR 531 CHANNELIZATION PLAN BY TRANSPORTATION SOLUTIONS, INC. (TSI). 425-883-4134

WATER & SEWER PLAN FOR MARYSVILLE UTILITIES BY HIGA BURKHOLDER ASSOCIATES, LLC. 425-252-2826

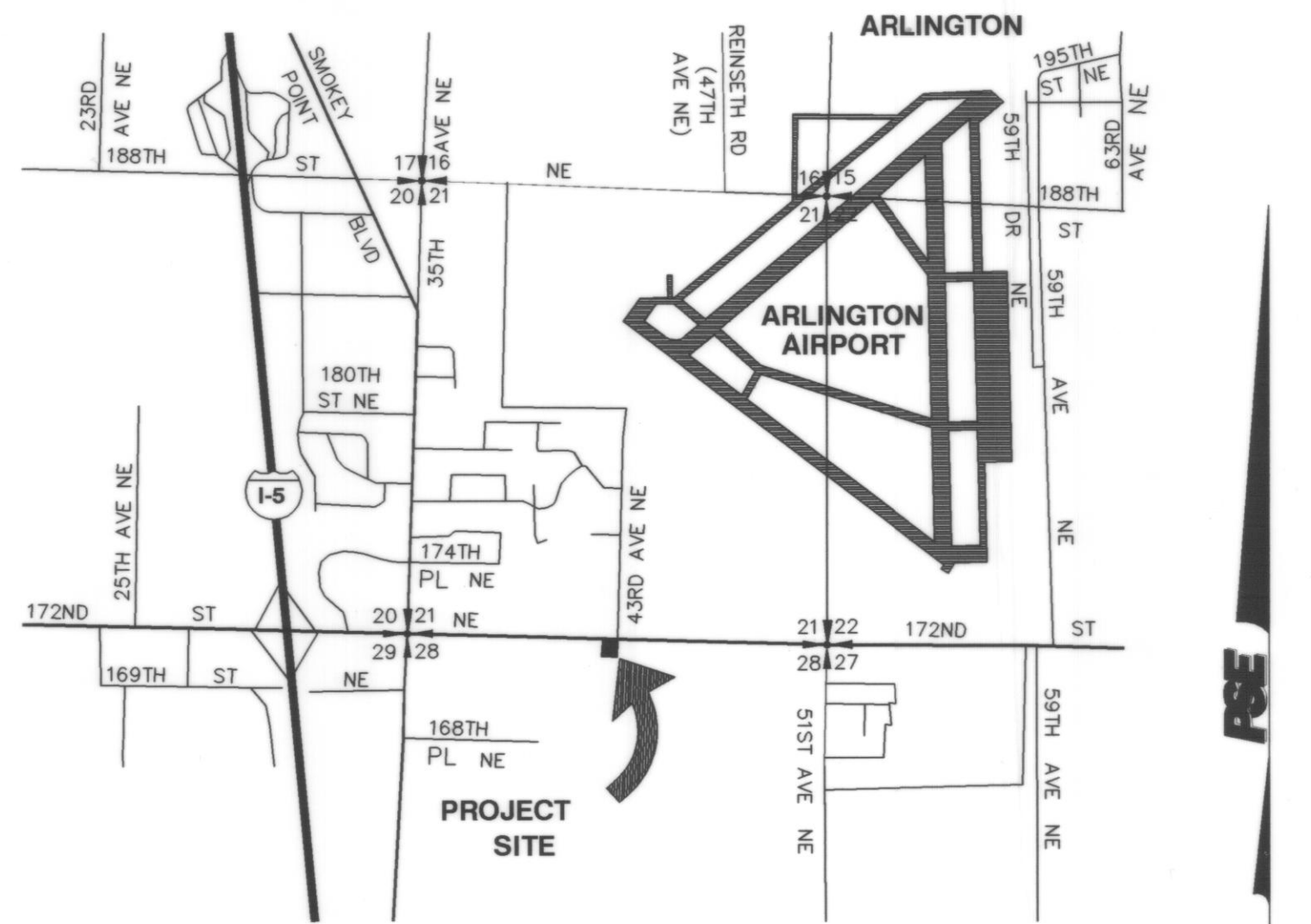
UTILITY POLE RELOCATION AND UNDERGROUND UTILITY PLAN BY SNOHOMISH COUNTY P.U.D. No. 1. 425-783-8272

CONSTRUCTION EQUIPMENT FLAGGING FOR AIRPORT SAFETY

BECAUSE OF THE SITE'S PROXIMITY TO THE ARLINGTON AIRPORT AND THE FACT THAT IS WITHIN THE VICINITY OF THE TRAFFIC PATTERN FOR THE MAIN RUNWAY, THE CONTRACTOR AT THE TIME OF CONSTRUCTION SHALL SUPPLY MARKINGS FOR ANY TALL CONSTRUCTION EQUIPMENT SUCH AS CRANES THAT MAY BE USED. THE MARKINGS SUPPLIED SHOULD BE FLAGS, MINIMUM 3'x3' IN DIMENSION WITH AN INTERNATIONAL ORANGE AND WHITE CHECKERBOARD PATTERN USING 1"x1" SQUARES. THE FLAGS SHALL BE PLACED ON THE HIGHEST PART OF THE EQUIPMENT TO SERVE AS A VISUAL WARNING TO PILOTS. ANY EQUIPMENT SUCH AS CRANES SHALL BE LOWERED AT NIGHT.

OLYMPIC PIPE CROSSING GENERAL SAFETY REQUIREMENTS

- WASHINGTON ONE-CALL AT 1-800-424-5555 MUST BE CONTACTED AT LEAST 48 HOURS (2 WORKING DAYS) BEFORE ANY CONSTRUCTION AND/OR EXCAVATION ACTIVITIES ARE INITIATED WITHIN THE PIPELINE RIGHT-OF-WAY SO THAT OPLC MAY HAVE A REPRESENTATIVE PRESENT TO ENSURE THAT THERE ARE NO CONFLICTS WITH THE PIPELINE. (THERE IS NO COST TO THE THIRD PARTY CONTRACTOR TO USE THE ONE-CALL NOTIFICATION SERVICE. HOWEVER, FAILURE TO UTILIZE THE ONE-CALL SERVICE CAN BE QUITE COSTLY IN TERMS OF UNNECESSARY RISK FOR THE CONTRACTOR/EXCAVATOR, THEIR EMPLOYEES, INNOCENT BYSTANDERS, PERSONAL PROPERTY OF OTHER AND/OR FINES.)
- TO HAVE THE PIPELINE PHYSICALLY LOCATED AND DEPTH VERIFIED, PLEASE CALL OPLC'S FIELD PROJECT OFFICE AT (425)235-7767 OR THE DAMAGE PREVENTION OFFICE AT (425)981-2517.
- OPLC REQUIRES A REPRESENTATIVE/INSPECTOR ON SITE WHEN ANY WORK IS BEING PERFORMED WITHIN TEN FEET (10') OF THE PIPELINE(S). FORTY-EIGHT (48) HOURS PRIOR NOTICE TO OPLC IS HIGHLY RECOMMENDED FOR ANY WORK. NOTICE TO OPLC DOES NOT RELIEVE THE CONTRACTOR OF ANY NOTIFICATION RESPONSIBILITY TO THE APPROPRIATE STATE ONE-CALL SYSTEM.
- OPLC REQUIRES DETAILED CONSTRUCTION PLANS AND OR DRAWINGS FOR ANY WORK WITHIN THE PIPELINE EASEMENT. OPLC REQUESTS AT LEAST 10 WORKING DAYS FOR REVIEW AND COMMENTS/APPROVAL OF PLANS. PLANS AND DRAWINGS SHOULD BE SUBMITTED TO OLYMPIC PIPELINE COMPANY, FIELD PROJECT OFFICE, 2319 LIND AVE, SW, RENTON, WA 98055.
- THE CONTRACTOR IS RESPONSIBLE FOR HAVING THE PIPELINE LOCATION ADDED TO THE CONSTRUCTION DRAWINGS. THE CONTRACTOR IS ALSO RESPONSIBLE FOR TAKING ALL THE NECESSARY SAFETY PRECAUTIONS AND WILL BE HELD RESPONSIBLE FOR ANY DAMAGE CAUSED TO THE PIPELINE OR PROPERTY AS A RESULT OF THEIR WORK.
- SEE ADDITIONAL NOTES ON SHEET 5.



VICINITY MAP

SCALE - 1" = 2000'

APPLICANT	OWNER	ENGINEER
WHIDBEY ISLAND BANK C/O JACK WAGNER P.O. BOX 7001 450 SW BAYSHORE DRIVE OAK HARBOR, WA 98277 (360) 679-3121	MUKILTEO VIEW SALES, INC. ATTN: KIM GUDGEL 1413 8TH STREET MARYSVILLE, WA 98201 (425) 252-2826	HIGA BURKHOLDER ASSOCIATES L.L.C. 1721 HEWITT AVE., SUITE 401 EVERETT, WA 98201 (425) 252-2826 (RECORD DRAWINGS BY PACIFIC SURVEYING & ENGINEERING INC.)
ARCHITECT	SURVEYOR	GEOTECHNICAL ENGINEER
FSI ARCHITECTS 625 FISHER LANE BURLINGTON, WA 98233 (360) 757-4094	METRON AND ASSOCIATES, INC. 307 N. OLYMPIC AVE., SUITE 205 ARLINGTON, WA 98223 (360) 435-3777	WESTERN GEOTECHNICAL CONSULTANTS, INC. TED HAMMER, P.E. 4181 SALTSPRINGS DRIVE FERDLE, WA 98248 (360) 380-2507

TAX ACCOUNT NUMBER	SITE ADDRESS
310528-002-003-00	4220 172ND STREET N.E. ARLINGTON, WA 98223
DATUM	N.A.V.D. 88
BENCHMARK	PROJECT BENCHMARK - FIRE HYDRANT LOCATED AT THE N.W. CORNER OF SUITLICH PARCEL AS SHOWN HEREON. N.W. TOP BONNET BOLT ELEVATION = 126.28 FEET N.A.V.D. 88 VERTICAL DATUM BASED ON A G.P.S. TIE TO SNOHOMISH COUNTY SURVEY CONTROL #1168. N.A.V.D. 88 - 3.70 FEET = N.G.V.D. 29

CITY OF ARLINGTON

AS-BUILT CONSTRUCTION DRAWING REVIEW ACKNOWLEDGEMENT

THIS AS-BUILT PLAN SHEET HAS BEEN REVIEWED AND ACCEPTED AS A RECORD DRAWING. THE LICENSED DESIGN ENGINEER WHOSE STAMP AND SIGNATURE APPEAR ON THIS SHEET ASSUMES FULL AND COMPLETE RESPONSIBILITY FOR THE ACCURACY THEREIN.

BY:
CITY ENGINEER

DATE: 06/16/2009

AS-BUILT DRAWING APPROVAL

THIS PLAN SHEET HAS BEEN REVIEWED AND APPROVED PER THE CONDITIONS ON THE TITLE SHEET.

BY:
City Engineer, CITY OF ARLINGTON

DATE:

RECORD DRAWING NOTE

THE IMPROVEMENTS NOTES AS "(AB)" WITHIN THESE RECORD DRAWINGS WERE CONSTRUCTED PER THE "SITE CIVIL CONSTRUCTION PLANS FOR WHIDBEY ISLAND BANK" PREPARED BY HIGA-BURKHOLDER ASSOCIATES, LLC AND APPROVED BY THE CITY OF ARLINGTON ON FEBRUARY 15, 2007. ONLY INFORMATION NOTED AS "(AB)" ON THESE RECORD DRAWINGS PREPARED BY PACIFIC SURVEYING AND ENGINEERING HAS BEEN VERIFIED AND FIELD SURVEYED OR MEASURED DURING CONSTRUCTION.

RECORD DRAWINGS

WHIDBEY ISLAND BANK
ARLINGTON, WASHINGTON
SITE CIVIL CONSTRUCTION PLANS

COVER SHEET

PWD20080095

JOB No.2008076

SHEET

01

OF

8



INTERGROUP DEVELOPMENT

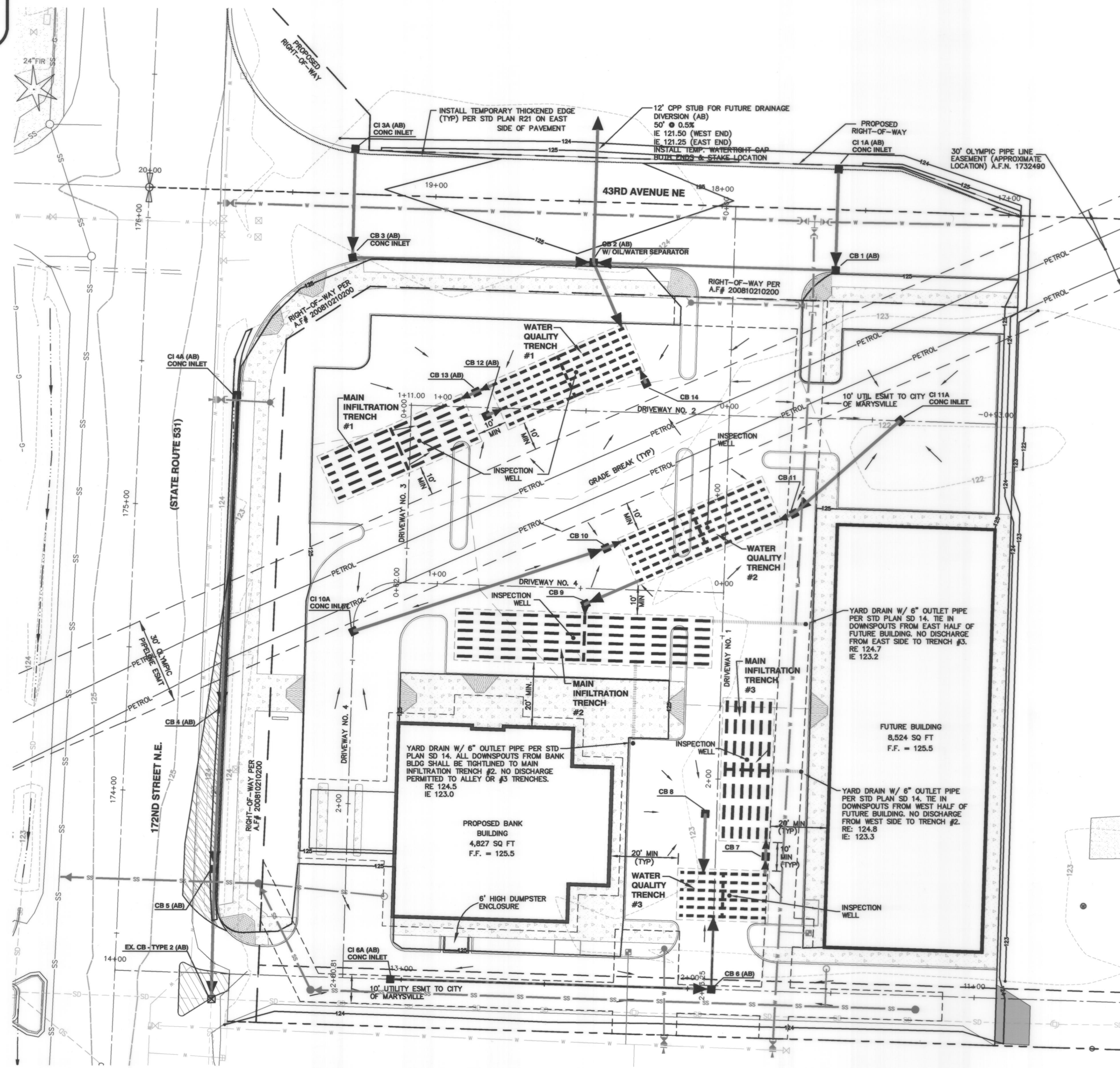
PO BOX 4055
BELLINGHAM, WA 98227
(360) 303-3302

FIELD BOOK	TBM. No.	LOCATION	ELEV.	DATA	DRAWN BY	CHECKED BY	SCALE	REV	DATE	REVISION DESCRIPTION	BY	No.	ISSUE DESCRIPTION	DATE
DESIGN:				BASE			HORIZ: 1" = 20'					1	RECORD DRAWINGS	03.08.09
STAKING:				DESIGN			VERT: 1" = 2'					2	RECORD DRAWINGS	04.23.09
ASBUILT: 378				XREF:								3	RECORD DRAWINGS	06.10.09
NW QTR. OF SEC 28, TWP 31 N, RING 5 E, W.M.														
SURVEY REFERENCE				PLAN CHECK				REVISIONS				ISSUE		
VERTICAL DATUM												FOR		



www.psesurvey.com
EMAIL: pse@psurvey.com

PACIFIC SURVEY & ENGINEERING INC
1812 CORNWALL, BELLINGHAM, WA 98225 PHONE: 671.7387 FAX: 671.4685



STORM DRAIN PIPE TABULATION				
ALL PIPE IS DOUBLE-WALL HDPE UNLESS OTHERWISE NOTED				
FROM	TO	LENGTH	SIZE	SLOPE
CI 1A	CB 1	35' (AB)	12" (AB)	-0.6% 0.4% (AB)
CB 1	CB 2	84' (AB)	12" (AB)	-0.5% 0.4% (AB)
CI 3A	CB 3	35' 38" (AB)	12" (AB)	-0.6% 1.1% (AB)
CB 3	CB 2	84' (AB)	12" (AB)	0.5% (AB)
CB 2	WQ TRNCH #1	24'	12"	0.6%
WQ TRNCH #1	CB 13	5'	12" (AB)	0.0%
CB 13	MAIN TRNCH #1	5'	12" (AB)	0.0%
CB 12	WQ TRNCH #1	5'	12" (AB)	0.0%
CB 14	WQ TRNCH #1	5'	12"	0.0%
CI 10A	CB 10	98'	12"	0.7%
CB 10	WQ TRNCH #2	5'	12"	0.0%
CI 11A	CB 11	49'	12"	1.0%
CB 11	WQ TRNCH #2	5'	12"	0.0%
WQ TRNCH #2	CB 9	19'	12"	0.0%
CB 9	MAIN TRNCH #2	5'	12"	0.0%
CB 8	WQ TRNCH #3	20'	12"	1.0%
CB 6	WQ TRNCH #3	25'	12" (AB)	1.0%
WQ TRNCH #3	CB 7	5'	12"	0.0%
CB 7	WQ TRNCH #3	5'	12"	0.0%
CI 6A	CB 6	444' 112" (AB)	12" (AB)	-0.6% 0.7% (AB)
CI 4A	CB 4	108' 110' (AB)	12" (AB)	-0.5% 0.6% (AB)
CB 4	CB 5	77' 66" (AB)	12" (AB)	-0.6% 0.6% (AB)
CB 5	EX. CB	34' 45" (AB)	12" (AB)	-0.6% 2.1% (AB)

STORM DRAIN STRUCTURE TABULATION		
CI 1A - CONC. INLET 43RD AVE NE STA 17+59.8, 13.4' 14.0' RT (AB) RE: +24.35-124.74 (AB) IE: +22.20-122.14 (AB)	CB 5 - TYPE 1L W/ OIL/WATER SEPARATOR 172ND STREET NE STA 173+00.3 73.9, 33.9' RT (AB) RE: +24.50-124.43 (AB) IE: +21.40-120.88 (E) (AB) IE: +21.40-120.78 (W) (AB)	CI 10A - CONC. INLET DRIVEWAY NO. 4 STA 1+39.9, 0.0' LT RE: 124.25 IE: 122.00
CB 1 - CONC. INLET 43RD AVE NE STA 17+59.8, 21.2' LT (AB) RE: +24.20-124.25 (AB) IE: +21.90-121.95 (N) (AB) IE: +21.90-122.00 (E) (AB)	EX. CB - TYPE 2 172ND STREET NE STA 173+28.5, 34.1' RT RE: +24.23-124.20 (AB) IE: +20.93-119.85-12" (E) (AB)	CB 10 - TYPE 1L W/ OIL/WATER SEPARATOR DRIVEWAY NO. 4 STA 0+41.5, 14.3' RT RE: 124.24 IE: 121.25
CB 2 - TYPE 1L W/ OIL/WATER SEPARATOR 43RD AVE NE STA 18+44.3, 21.2' LT (AB) RE: +24.85-124.98 (AB) IE: +21.40-121.53 (W) (AB) IE: +21.50-121.58 (N, S, E) (AB)	CI 6A - CONC. INLET WEST ALLEY STA 0+44.3-13+03.8, -98.4' 0.0' LT (AB) RE: 124.30 (AB) IE: +22.10-122.35 (AB)	CI 11A - CONC. INLET DRIVEWAY NO. 2 STA -0+59.6, 0.0' LT RE: 124.25 IE: 121.75
CI 3A - CONC. INLET 43RD AVE NE STA 19+28.9, 13.4' 15.7' RT (AB) RE: +24.45-124.36 (AB) IE: +22.20-122.41 (AB)	CB 6 - W/ OIL/WATER SEPARATOR WEST ALLEY STA 11+91.7, 0.0' LT (AB) RE: +24.30-124.26 (AB) IE: +21.50-121.56 (N) (AB) IE: +21.50-121.51 (E) (AB)	CB 11 - TYPE 1L W/ OIL/WATER SEPARATOR DRIVEWAY NO. 1 STA 1+06.5, 23.7' LT RE: 124.25 IE: 121.25
CB 3 - CONC. INLET 43RD AVE NE STA 19+28.7, 21.8' 22.2' LT (AB) RE: +24.10-124.14 (AB) IE: +21.90-121.99 (AB)	CB 7 - TYPE 1L W/ OIL/WATER SEPARATOR DRIVEWAY NO. 2 STA 2+28.5, 17.5' LT RE: 124.50 IE: 121.25	CB 12 - TYPE 1L W/ OIL/WATER SEPARATOR DRIVEWAY NO. 2 STA 0+84.6, 2.8' LT (AB) RE: 124.25 (AB) IE: 121.25 (AB)
CI 4A - CONC. INLET 172ND STREET NE STA 175+44.5 39.5, 33.7' RT (AB) RE: +24.60-124.52 (AB) IE: +21.40-121.32 (E) (AB) IE: +21.40-121.31 (W) (AB)	CB 8 - TYPE 1L W/ OIL/WATER SEPARATOR 43RD AVE NE STA 2+12.2, 4.0' RT RE: 124.25 IE: 121.35	CB 12 - TYPE 1L W/ OIL/WATER SEPARATOR DRIVEWAY NO. 2 STA 0+88.5, 5.3' RT (AB) RE: +24.35-124.33 (AB) IE: +21.25-121.08 (N) (AB) IE: +21.25-121.18 (S) (AB)
CB 4 - TYPE 1 172ND STREET NE STA 174+30.0-29.6, 33.7' RT (AB) RE: +24.10-124.57 (AB) IE: +21.40-121.32 (E) (AB) IE: +21.40-121.31 (W) (AB)	CB 9 - TYPE 1L W/ OIL/WATER SEPARATOR DRIVEWAY NO. 4 STA 0+48.2, 5.4' LT RE: 124.35 IE: 121.25	CB 14 - TYPE 1L W/ OIL/WATER SEPARATOR DRIVEWAY NO. 2 STA 0+29.4, 10.2' RT RE: 124.25 IE: 121.25

NOTES: ALL GRATES ARE STANDARD EXCEPT SOLID LID WHERE NOTED. OFFSETS MEASURED TO CENTER OF GRATE. OIL/WATER SEPARATORS SHALL BE CONSTRUCTED PER STD PLAN SD 8, W/12" PIPES. OVERFLOW CDS SHALL BE CONSTRUCTED PER DETAIL ON SHEET 5.

DATUM: N.A.V.D. 88
BENCHMARK: PROJECT BENCHMARK - FIRE HYDRANT LOCATED AT THE N.W. CORNER OF SUBJECT PARCEL AS SHOWN HEREON. N.W. TOP BONNET BOLT ELEVATION = 126.28 FEET N.A.V.D. 88
VERTICAL DATUM BASED ON A G.P.S. TIE TO SNOHOMISH COUNTY SURVEY CONTROL #1168.
N.A.V.D. 88 - 3.70 FEET = N.G.V.D. 29

AS-BUILT DRAWING APPROVAL
THIS PLAN SHEET HAS BEEN REVIEWED AND APPROVED PER THE CONDITIONS ON THE TITLE SHEET.
BY: [Signature]
City Engineer, CITY OF ARLINGTON
DATE: 06/16/2009

RECORD DRAWING NOTE
THE IMPROVEMENTS NOTED AS "(AB)" WITHIN THESE RECORD DRAWINGS WERE CONSTRUCTED PER THE "SITE CIVIL CONSTRUCTION PLANS FOR WHIDBEY ISLAND BANK" PREPARED BY HIGA-BURKHOLDER ASSOCIATES, LLC AND APPROVED BY THE CITY OF ARLINGTON ON FEBRUARY 15, 2007. ONLY INFORMATION NOTED AS "(AB)" ON THESE RECORD DRAWINGS PREPARED BY PACIFIC SURVEYING AND ENGINEERING HAS BEEN VERIFIED AND FIELD SURVEYED OR MEASURED DURING CONSTRUCTION.

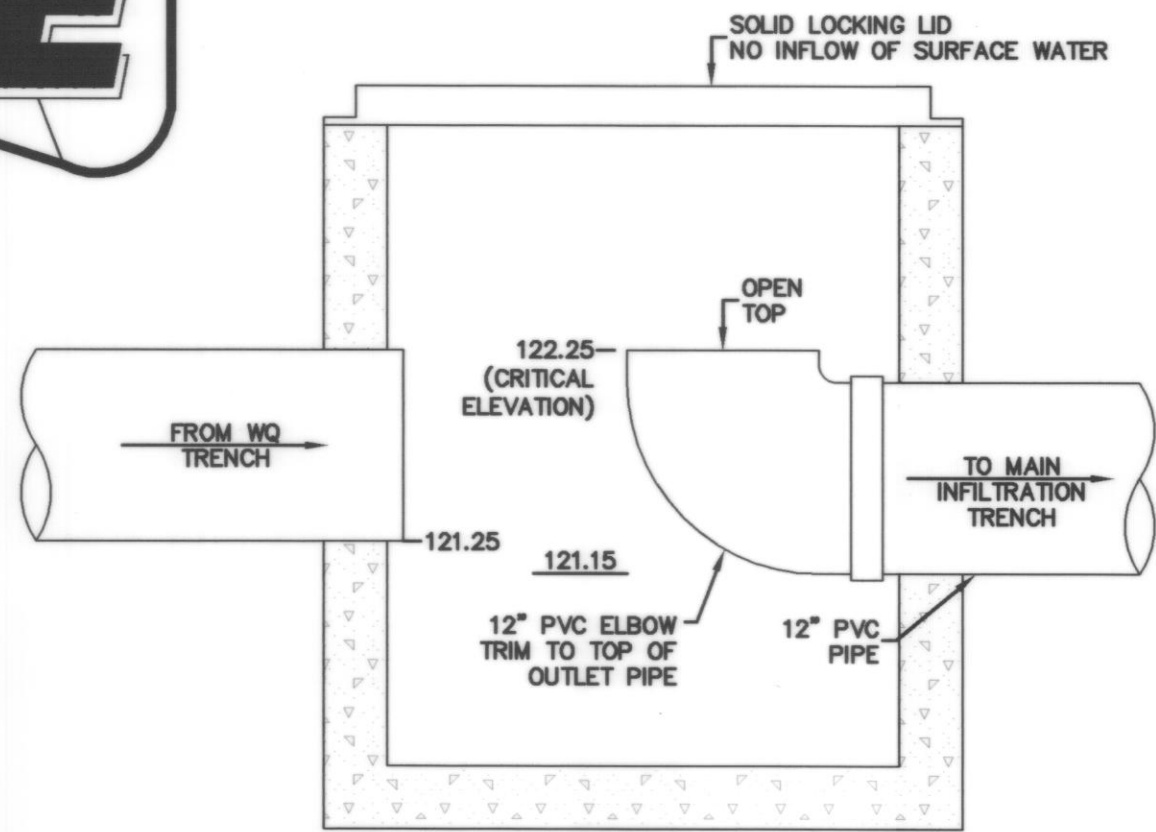
RECORD DRAWINGS
WHIDBEY ISLAND BANK
ARLINGTON, WASHINGTON
SITE CIVIL CONSTRUCTION PLANS
DRAINAGE PLAN

PWD20080095
JOB No. 2008076
SHEET
04
OF
8

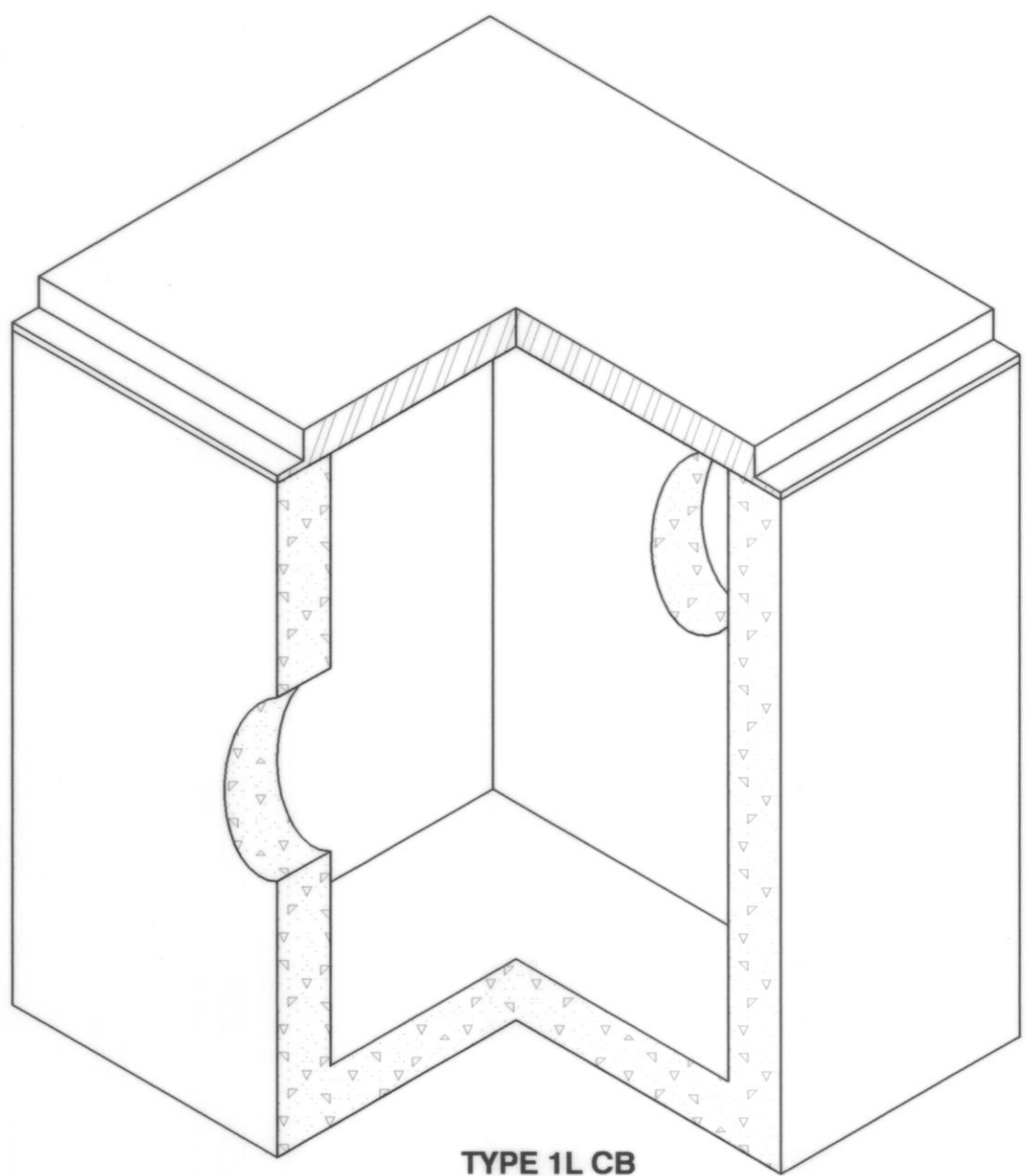
FIELD BOOK	TBM. No.	LOCATION	ELEV.	DATA	DRAWN BY	CHECKED BY	SCALE	REV	DATE	REVISION DESCRIPTION	BY	No.	ISSUE DESCRIPTION	DATE	INTERGROUP DEVELOPMENT PO BOX 4055 BELLINGHAM, WA 98227 (360) 303-3302
DESIGN:				BASE			HORIZ: 1" = 20'					1	RECORD DRAWINGS	03.09.09	
STAKING:				DESIGN			VERT: 1" = 2'					2	RECORD DRAWINGS	04.23.09	
ASBUILT: 378				XREF:								3	RECORD DRAWINGS	06.10.09	
NW QTR. OF SEC 28, TWP 31 N, RING 5 E, WM.				DWC: P:\Pse Project\2007076\DWG5\2007076_eoc_SP-AB_Arlington.dwg											
SURVEY REFERENCE		VERTICAL DATUM			PLAN CHECK			REVISIONS			ISSUE			FOR	



www.psesurvey.com
PACIFIC SURVEY & ENGINEERING INC
1812 CORNWALL, BELLINGHAM, WA 98225 PHONE: 671.7387 FAX: 671.4685
EMAIL: pse@psurvey.com



TYPE 1L CB



TYPE 1L CB

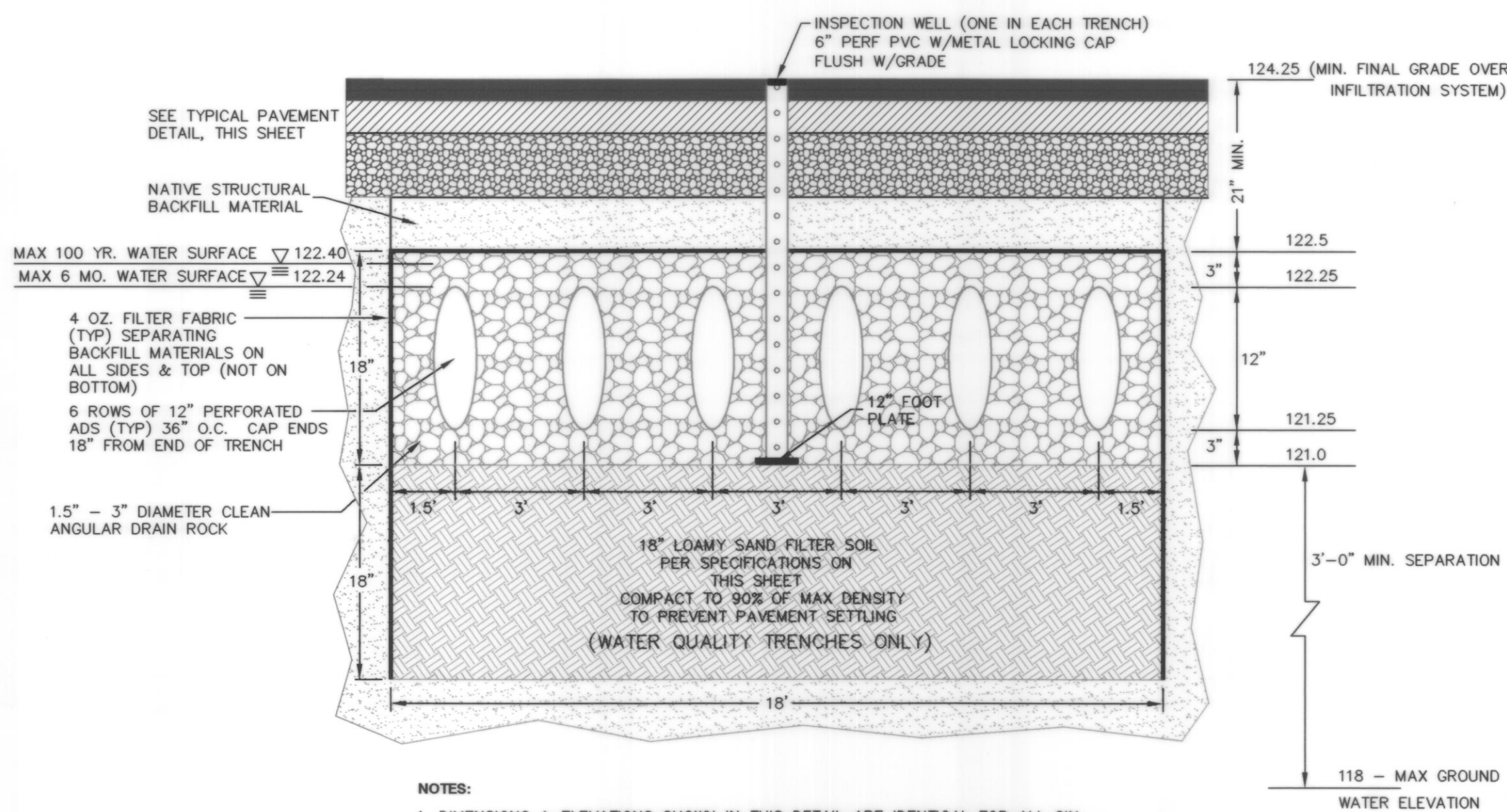
NOTE: ALL OVERFLOW CB'S ARE IDENTICAL, WITH THE SAME ELEVATION.

OVERFLOW CB DETAIL

NOT TO SCALE

STORM DRAINAGE NOTES

1. ALL STORM SEWER PIPE SHALL CONFORM WITH SECTION 5 OF ARLINGTON PUBLIC WORKS CONSTRUCTION STANDARDS AND SPECIFICATIONS.
2. ALL PIPE SHALL BE PLACED ON STABLE EARTH, OR IF IN THE OPINION OF THE INSPECTOR THE EXISTING FOUNDATION IS UNSATISFACTORY, THEN IT SHALL BE EXCAVATED BELOW GRADE AND BACK-FILLED WITH A GRAVEL MATERIAL TO SUPPORT THE PIPE.
3. THE BACK FILL SHALL BE PLACED EQUALLY ON BOTH SIDES OF THE PIPE IN LAYERS WITH A LOOSE AVERAGE DEPTH OF 6", MAXIMUM DEPTH 8"-9", THOROUGHLY STAMPING EACH LAYER. THESE COMPACTED LAYERS MUST EXTEND FOR ONE DIAMETER ON EACH SIDE OF THE PIPE OR TO THE SIDE OF THE TRENCH. MATERIALS TO COMPLETE THIS FILL OVER PIPE SHALL BE THE SAME AS DESCRIBED. (REFER TO WSDOT STANDARD SPECIFICATIONS 7-04.3(3) AND 2-03.2(14)C, METHOD B & C).
4. CATCH BASIN OFFSETS ARE MEASURED TO CENTER OF GRATE.
5. ALL CATCH BASINS SHALL BE TYPE 1 PER SD 2, EXCEPT AS OTHERWISE NOTED.
6. ALL CATCH BASINS WITH A DEPTH OVER 5.0 FEET TO THE FLOW LINE SHALL BE A TYPE II CB OR LARGER (MANHOLE).
7. THE CONTRACTOR SHALL BE RESPONSIBLE FOR ADJUSTING ALL MANHOLE, INLET AND CATCH BASIN FRAMES AND GRATES TO GRADE JUST PRIOR TO POURING CURBS AND PAVING.
8. CATCH BASIN FRAME AND GRATES SHALL BE OLYMPIC FOUNDRY MODEL 5435, LOCKING TYPE OR EQUAL.
9. UNLESS OTHERWISE NOTED, ALL STORM SEWER PIPE SHALL BE CORRUGATED POLYETHYLENE PIPE: THE MATERIAL SUPPLIED UNDER THIS SPECIFICATION SHALL BE HIGH-DENSITY CORRUGATED POLYETHYLENE SMOOTH INTERIOR PIPE AND SHALL BE MANUFACTURED IN CONFORMITY WITH THE LATEST AASHTO SPECIFICATIONS OR M294 TYPE S AND THE MATERIAL COMPOUND SHALL CONFORM TO AASHTO M294. COUPLERS SHALL COVER NOT LESS THAN ONE FULL CORRUGATION ON EACH ANNULAR SECTION OF PIPE AND PASS THE WSDOT STANDARD SPECIFICATION SECTION 7-04.3(4)D LOW PRESSURE AIR TEST FOR STORM SEWERS.
10. GALVANIZED STEEL PIPE SHALL HAVE TYPE 1 ASPHALT COATING. ALUMINIZED PIPE DOES NOT REQUIRE COATING.
11. STORM WATER RETENTION/DETENTION FACILITIES, STORM DRAINAGE PIPE AND CATCH BASINS SHALL BE FLUSHED AND CLEANED PRIOR TO ARLINGTON PUBLIC WORKS ACCEPTANCE.



NOTES:

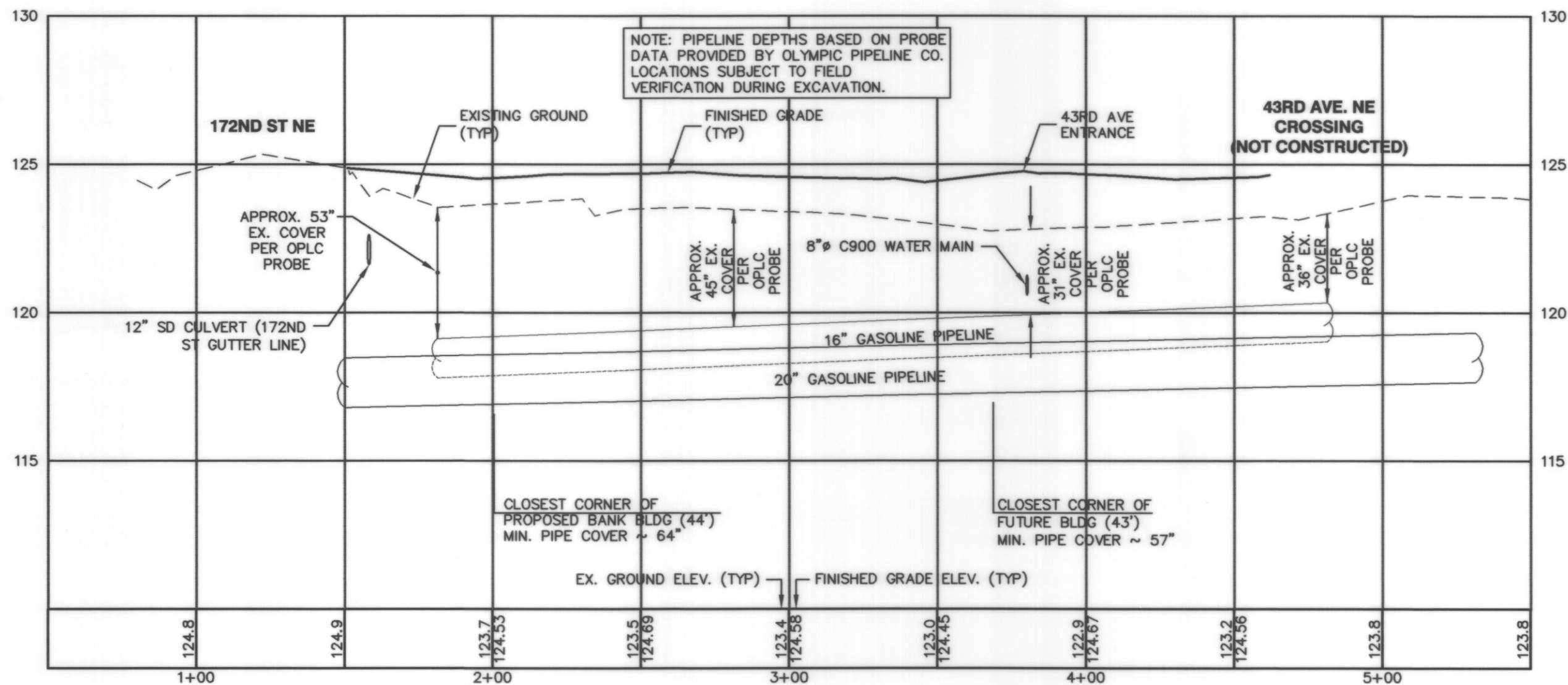
1. DIMENSIONS & ELEVATIONS SHOWN IN THIS DETAIL ARE IDENTICAL FOR ALL SIX PROPOSED INFILTRATION TRENCHES.
2. LENGTHS OF TRENCHES ARE AS SHOWN ON PLAN.
3. LOAMY SAND UNDERLAYMENT APPLIES ONLY TO THE THREE WATER QUALITY TRENCHES, NOT THE MAIN INFILTRATION TRENCHES.
4. CONTRACTOR SHALL REQUEST INSPECTION OF TRENCH EXCAVATIONS BY PROJECT GEOTECHNICAL ENGINEER TO VERIFY SOIL CONDITIONS BEFORE BACKFILLING THE INFILTRATION FACILITIES.

TYPICAL SECTION
WATER QUALITY & MAIN INFILTRATION TRENCHES

NOT TO SCALE

LOAMY SAND FILTER SOIL SPECIFICATIONS

PROJECT GEOTECHNICAL ENGINEER SHALL VERIFY SUITABILITY OF LOAMY SAND FILTER SOIL LAYER IN THE WATER QUALITY TRENCHES. LOAMY SAND SHALL HAVE THE GENERAL CHARACTERISTICS AS NOTED IN THE U.S.D.A. TEXTURAL TRIANGLE:
CLAY CONTENT: 10% - 15%
SAND CONTENT: 70% - 85%
MIN. CATION EXCHANGE CAPACITY EQUAL TO OR GREATER THAN 5.0 MILLIEQUIVALENTS/100 GRAMS



OLYMPIC PIPELINE PROFILE

SCALE: 1" = 40' HORIZ.
1" = 4' VERT.

AS-BUILT DRAWING APPROVAL

THIS PLAN SHEET HAS BEEN REVIEWED AND APPROVED PER THE CONDITIONS ON THE TITLE SHEET.

BY: *[Signature]*
City Engineer, CITY OF ARLINGTON

DATE: 06/16/2009

OLYMPIC PIPELINE CROSSING NOTES

EXCAVATION SPECIFIC REQUIREMENTS

NO EXCAVATION OR CONSTRUCTION ACTIVITY WILL BE PERMITTED IN THE VICINITY OF THE PIPELINE(S) UNTIL ALL APPROPRIATE COMMUNICATIONS HAVE BEEN MADE WITH OPLC'S FIELD PROJECTS AND ENGINEERING PERSONNEL.

THERE SHALL BE NO EXCAVATION OR BACKFILLING WITHIN THE PIPELINE RIGHT OF WAY FOR ANY REASON WITHOUT A REPRESENTATIVE FROM OPLC ON SITE STATING PERMISSION.

IN SOME INSTANCES, EXCAVATION AND OTHER CONSTRUCTION ACTIVITIES AROUND CERTAIN PIPELINES CAN BE CONDUCTED SAFELY ONLY WHEN THE PIPELINE OPERATING PRESSURE HAS BEEN REDUCED.

CONTRACTORS ARE THEREFORE CAUTIONED THAT EXCAVATION, WHICH EXPOSES OR SIGNIFICANTLY REDUCES THE COVER OVER A PIPELINE MAY HAVE TO BE DELAYED UNTIL THE REDUCED PRESSURE IS ACHIEVED.

GENERAL CONSTRUCTION ACTIVITIES

THE CONTRACTOR SHALL NOT BE PERMITTED TO TRANSPORT CONSTRUCTION MATERIALS OR EQUIPMENT LONGITUDINALLY OVER THE PIPELINE.

ANY REQUIRED RELOCATION OR ENCASEMENT OF THE PIPELINE(S) WILL BE AT THE DEVELOPER'S EXPENSE.

DEVELOPMENT GRADING SHOULD NOT REMOVE ANY OF THE EXISTING GROUND COVER FROM; OR ADD EXCESSIVE FILL OVER THE PIPELINE(S). OPLC'S PRIOR APPROVAL TO ADD FILL IS REQUIRED.

WHERE IT IS NECESSARY FOR CONSTRUCTION EQUIPMENT (I.E. TRACTORS, BACKHOES, DUMP TRUCKS ETC.) OR EQUIPMENT TRANSPORTING CONSTRUCTION MATERIALS TO CROSS THE PIPELINE TO GAIN ACCESS TO THE JOB SITE, A CROSSING SHALL BE CONSTRUCTED AT A 90-DEGREE ANGLE TO THE PIPELINE. THE CONTRACTOR WILL BE RESPONSIBLE FOR PROTECTING THE PIPELINE DEPENDING ON DEPTH, SOIL CONDITIONS AND TYPE OF EQUIPMENT FOR TEMPORARY OR PERMANENT CROSSINGS USING EITHER FILL OR STEEL SHEETING. THESE METHODS MUST MEET OPLC'S REQUIREMENTS AND HAVE PRIOR APPROVAL FROM OUR ENGINEERING AND CONSTRUCTION DEPARTMENTS.

NO TRACK TYPE CONSTRUCTION EQUIPMENT SHALL BE PERMITTED TO PIVOT OR TURN DIRECTLY OVER THE TOP OF THE PIPELINE.

A SCRAPER OR PAN TYPE TRACTOR SHALL NOT BE USED FOR REMOVAL OF SOIL WITHIN TEN FEET (10') OF THE CENTERLINE OF THE PIPELINE. RUBBER TIRE OR SMALL TRACK TYPE EQUIPMENT IS AN ACCEPTABLE ALTERNATIVE.

A SHEEPSFOOT ROLLER SHALL NOT BE USED FOR COMPACTION PURPOSES WITHIN FIVE FEET (5') OF THE CENTERLINE OF THE PIPELINE.

NO VIBRATORY ROLLERS SHALL BE USED WITHIN THREE FEET (3') OF THE CENTERLINE OF THE PIPELINE UNTIL THE COMPACTED COVER OVER THE PIPELINE HAS REACHED A DEPTH OF THREE AND ONE-HALF FEET (3 1/2').

PARKING LOTS, ROADS, DRIVEWAYS, FENCES AND STRUCTURES

NO PERMANENT STRUCTURES MAY BE CONSTRUCTED ON THE PIPELINE RIGHT OF WAY.

NO ROADS OF FENCES SHALL RUN PARALLEL TO THE PIPELINE WITHIN THE PIPELINE RIGHT OF WAY. ROADS AND FENCES SHALL CROSS THE PIPELINE RIGHT OF WAY AT, OR AS NEAR TO, A 90-DEGREE ANGLE AS IS FEASIBLE. IN NO INSTANCE SHALL THE ANGLE OF THE CROSSING BE LESS THAN 45 DEGREES. FENCE POSTS MUST MAINTAIN A MINIMUM THREE FEET (3') CLEARANCE OFF THE PIPELINE(S) WHEN CROSSING THE EASEMENT.

THERE SHALL BE A MINIMUM VERTICAL SEPARATION OF TWO FEET (2') BETWEEN THE PIPELINE AND ANY UNDERGROUND STRUCTURE.

A MINIMUM OF FIVE FEET (5') OF COVER IS REQUIRED FOR ALL ROAD CROSSINGS, AND THREE FEET (3') FOR DRIVEWAYS; HOWEVER A STRESS FACTOR CALCULATION MAY BE NEEDED TO DETERMINE THE ACTUAL AMOUNT OF COVER REQUIRED DEPENDING ON SOIL CONDITIONS AND OTHER CIRCUMSTANCES.

PROPOSALS FOR PARKING ON THE PIPELINE RIGHT OF WAY ARE DISCOURAGED. ASPHALT PAVING MAY BE PERMITTED AS AN EXCEPTION UNDER CERTAIN CONDITIONS WITH AN AGREEMENT EXECUTED BY THE PROPERTY OWNER AND OPLC. THE AGREEMENT GRANTS OPLC THE RIGHT TO EXCAVATE WITHIN THE PAVEMENT AREA FOR ANY PIPELINE MAINTENANCE THAT MAY BE NECESSARY IN THE FUTURE AND ACKNOWLEDGES THE PROPERTY OWNER AS THE PARTY RESPONSIBLE FOR THE EXPENSE OF PAVEMENT REPLACEMENT. IF A PARKING LOT IS PERMITTED BY OPLC A MINIMUM OF FOUR FEET (4') OF COVER WILL BE REQUIRED. HOWEVER OPLC WILL EVALUATE EACH PROPOSAL ON AN INDIVIDUAL BASIS, AND MAY IMPOSE ADDITIONAL REQUIREMENTS.

CONCRETE PAVEMENT IS DISCOURAGED; AND IN MOST INSTANCES WILL NOT BE ALLOWED.

A MINIMUM OF THREE FEET (3') OF COVER IS REQUIRED FOR ALL DRAINAGE DITCHES.

NO STRUCTURES SUCH AS MANHOLES, CATCH BASINS, THRUST BLOCKS OR FIRE HYDRANTS SHALL BE LOCATED OVER THE PIPELINE. A MINIMUM HORIZONTAL CLEARANCE OF TEN FEET (10') IS REQUIRED BETWEEN THE STRUCTURE AND PIPELINE.

FOREIGN LINE OR UTILITY CROSSINGS

ALL FOREIGN LINES SHALL CROSS THE PIPELINE RIGHT-OF-WAY AT, OR AS NEAR TO, A 90-DEGREE ANGLE AS IS FEASIBLE.

IN NO INSTANCE SHALL THE ANGLE OF THE CROSSING BE LESS THAN 45 DEGREES.

IN NO INSTANCE SHALL THE FOREIGN LINE BE PLACED PARALLEL TO THE PIPELINE WITHIN THE PIPELINE RIGHT-OF-WAY.

THE FOREIGN LINE SHALL CROSS UNDER THE PIPELINE WITH AT LEAST TWO FEET (2') OF VERTICAL SEPARATION UNLESS THE PIPELINE IS AT A PROHIBITIVE DEPTH. IN SUCH CASES, OPLC PERSONNEL WILL REVIEW AND EVALUATE THE PROPOSED CROSSING LOCATION TO DETERMINE IF IT WILL BE ALLOWABLE FOR THE FOREIGN LINE TO CROSS ABOVE.

IF THE FOREIGN LINE IS A TELECOMMUNICATIONS CABLE, POWER CABLE OR SIMILAR IN NATURE, THE FOREIGN LINE SHALL BE PLACED IN SCHEDULE 40 PVC CONDUIT, OR GREATER, FOR A LINEAR DISTANCE EXTENDING TEN FEET (10') ON EITHER SIDE OF CENTERLINE OF THE PIPELINE. IN THE CASE OF A POWER CABLE IT SHALL BE ENCASED IN RED-DYED CONCRETE FOR A LINEAR DISTANCE OF TEN FEET (10') ON EITHER SIDE OF CENTERLINE OF PIPELINE.

A UTILITY WITH A CATHODICALLY PROTECTED FOREIGN LINE WHICH CROSSES OR IS PLACED ADJACENT TO OPLC'S PIPELINE(S) MUST INSTALL A TEST POINT AND PERFORM INTERFERENCE TESTING BETWEEN THE UTILITY AND OPLC. PLEASE CONTACT OPLC'S CORROSION TECHNICIAN BY CALLING OUR MAIN OFFICE AT (425) 226-8883.

BELOW GROUND WARNING TAPE SHALL BE PLACED IN THE DITCH LINE ABOVE THE FOREIGN LINE. THE WARNING TAPE SHALL BE PLACED APPROXIMATELY ONE FOOT (1') BELOW THE FINAL SURFACE GRADE/ELEVATION. THE WARNING TAPE SHALL EXTEND FOR A LINEAR DISTANCE TO TEN FEET (10') ON EITHER SIDE OF THE CENTERLINE OF THE PIPELINE.

LANDSCAPE AND VEGETATION

NO TREES ARE ALLOWED ON THE PIPELINE RIGHT OF WAY. OPLC MAY PERMIT THE INSTALLATION OF LIMITED LANDSCAPING AND MINOR SHRUBBERY PLANTINGS WITH A VERBAL COMMUNICATION. FOR MAJOR DEVELOPMENT, LANDSCAPING PLANS MUST FIRST BE SUBMITTED IN WRITING TO OPLC FOR REVIEW AND APPROVAL. ANY PLANTINGS THAT RESTRICT EFFICIENT AERIAL INSPECTION OR LIMIT ACCESS TO THE EASEMENT AREA WILL BE CONSIDERED AN INTERFERENCE AND MUST BE ADDRESSED ACCORDINGLY.

OPLC RESERVES THE RIGHT TO IMPOSE FURTHER STIPULATIONS OR REQUIREMENTS CONSISTENT WITH EACH INDIVIDUAL EASEMENT OR SITUATION. SHOULD YOU ANTICIPATE ANY PROBLEMS REGARDING THESE REQUIREMENTS PLEASE CONTACT OPLC'S FIELD PROJECT OFFICE AT (425)-235-7767.

RECORD DRAWING NOTE

THE IMPROVEMENTS NOTES AS "(AB)" WITHIN THESE RECORD DRAWINGS WERE CONSTRUCTED PER THE "SITE CIVIL CONSTRUCTION PLANS FOR WHIDBEY ISLAND BANK" PREPARED BY HGA-BURKHOLDER ASSOCIATES, LLC AND APPROVED BY THE CITY OF ARLINGTON ON FEBRUARY 15, 2007. ONLY INFORMATION NOTED AS "(AB)" ON THESE RECORD DRAWINGS PREPARED BY PACIFIC SURVEYING AND ENGINEERING HAS BEEN VERIFIED AND FIELD SURVEYED OR MEASURED DURING CONSTRUCTION.

RECORD DRAWINGS

WHIDBEY ISLAND BANK
ARLINGTON, WASHINGTON
SITE CIVIL CONSTRUCTION PLANS

DRAINAGE NOTES & DETAILS

PWD20080095

JOB No.2008076

SHEET

05
OF
8

FIELD BOOK	TBM. No.	LOCATION	ELEV.	DATA	DRAWN BY	CHECKED BY	SCALE	REV	DATE	REVISION DESCRIPTION	BY	No.	ISSUE DESCRIPTION	DATE	INTERGROUP DEVELOPMENT
DESIGN:				BASE			HORIZ: 1" = 20'					1	RECORD DRAWINGS	03.09.09	PO BOX 4055 BELLINGHAM, WA 98227 (360) 303-3302
STAKING:				DESIGN			VERT: 1" = 2'					2	RECORD DRAWINGS	04.21.09	
ASBUILT: 378				XREF:								3	RECORD DRAWINGS	06.10.09	
NW QTR. OF SEC 28, T1P, 31 N, R1G S E, W.M.				DWG: P:\Pse Project\2007076\DWG\2007076.ecx.SP-AB_Arlington.dwg											
SURVEY REFERENCE		VERTICAL DATUM		PLAN CHECK		REVISIONS		ISSUE		FOR					

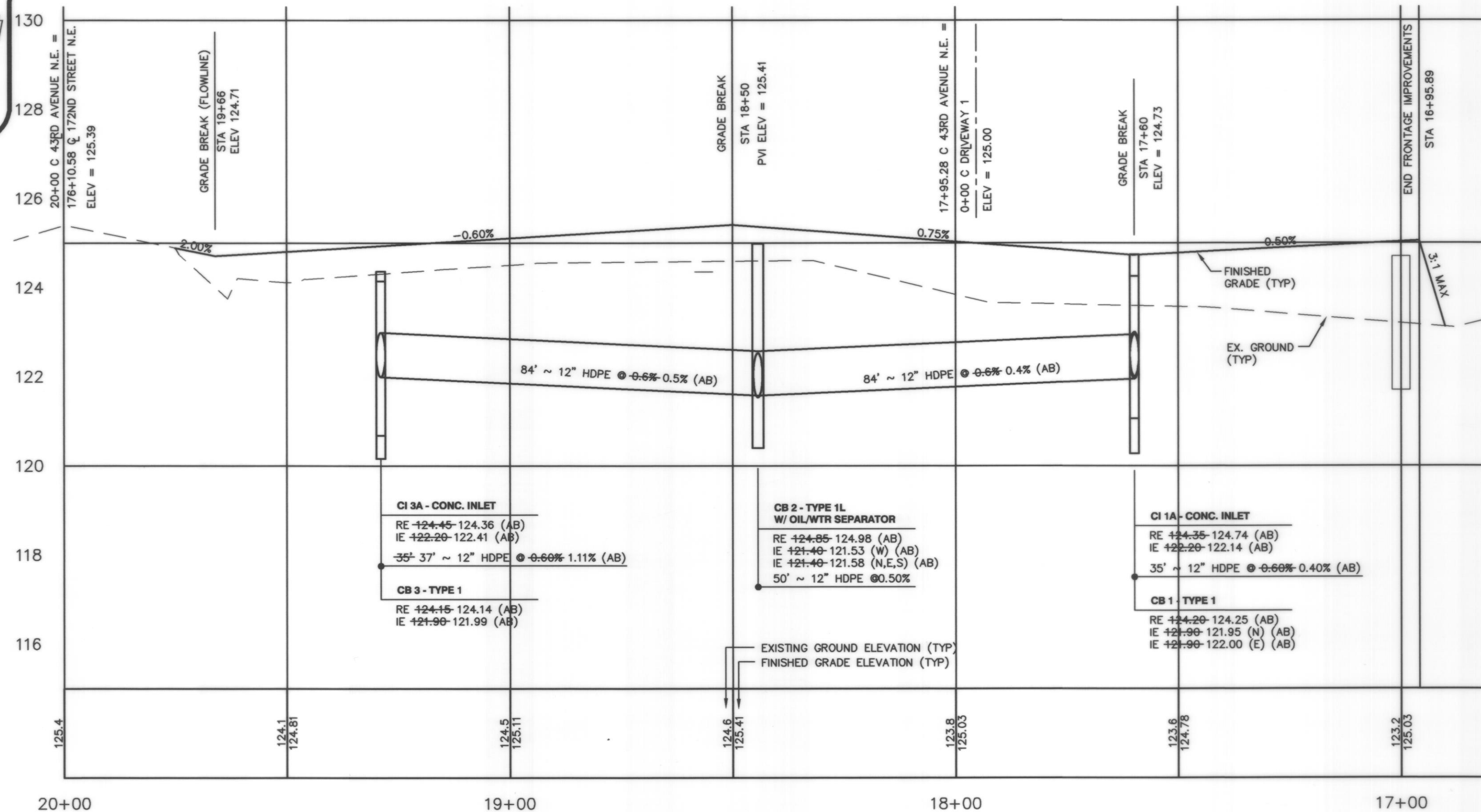




www.psesurvey.com
EMAIL: pse@psurvey.com

INC

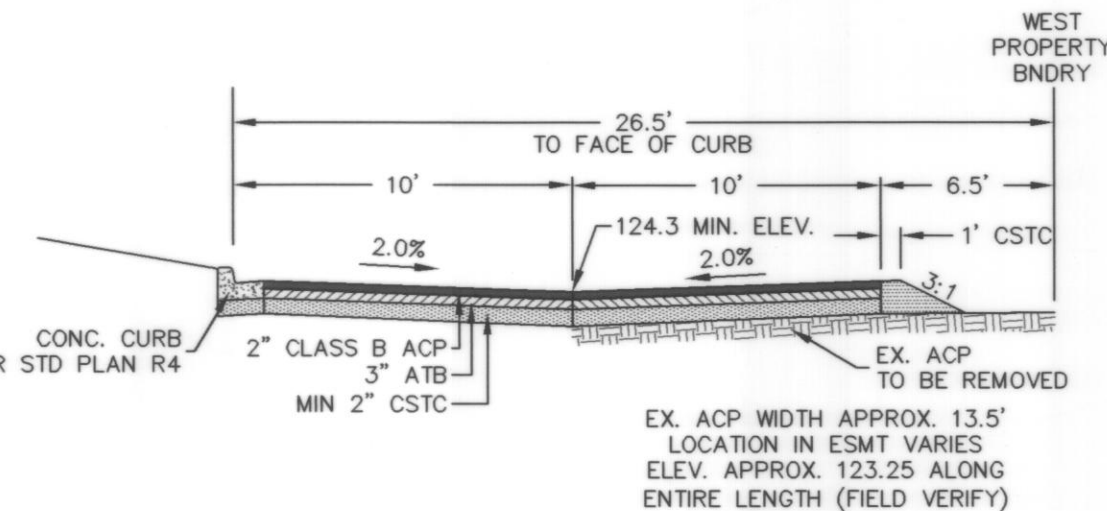
PACIFIC SURVEY & ENGINEERING
1812 CORNWALL, BELLINGHAM, WA 98225 PHONE: 671.7387 FAX: 671.4685



CENTERLINE PROFILE - 43RD AVENUE NE

SCALE: 1" = 20' HORIZONTAL
1" = 2' VERTICAL

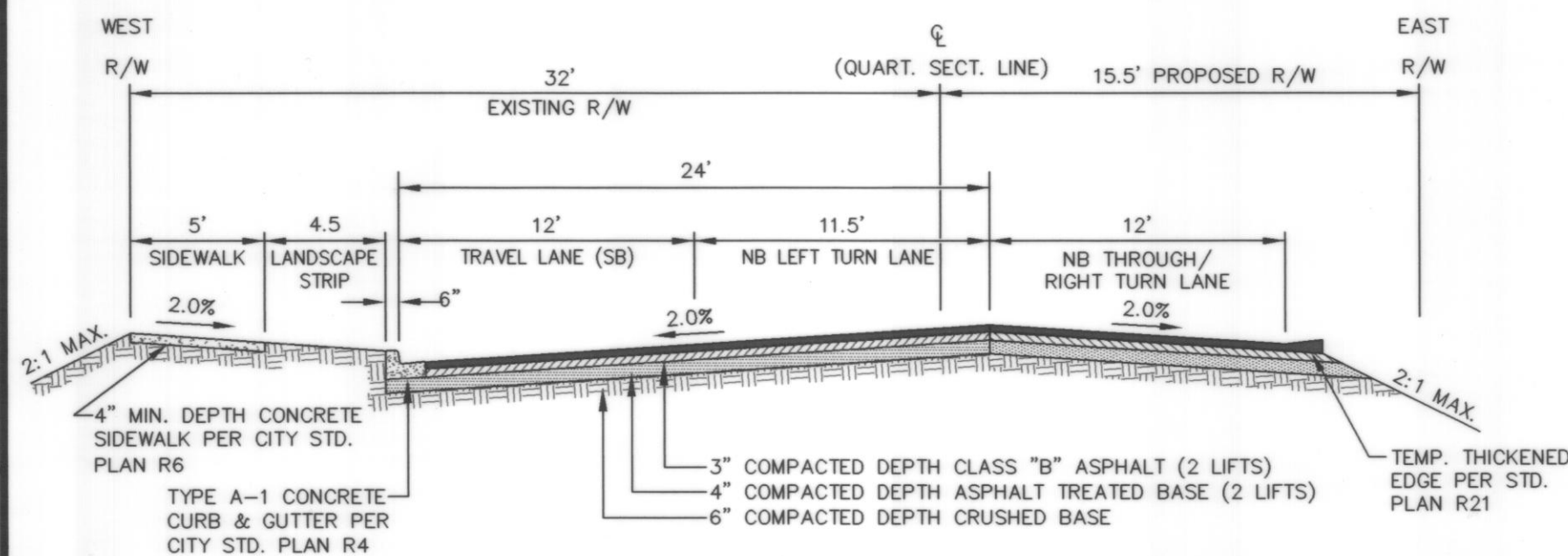
DATUM N.A.V.D. 88
BENCHMARK PROJECT BENCHMARK - FIRE HYDRANT LOCATED AT THE N.W. CORNER OF SUBJECT PARCEL AS SHOWN HEREON. N.W. TOP BONNET BOLT ELEVATION = 126.28 FEET N.A.V.D. 88
VERTICAL DATUM BASED ON A G.P.S. TIE TO SNOHOMISH COUNTY SURVEY CONTROL #1168.
N.A.V.D. 88 - 3.70 FEET = N.G.V.D. 29



NOTE: FIELD-ADJUST TRANSITION TO EX. ACP ON ADJACENT PARCEL AT NORTH END OF ALLEY

WEST ALLEY RECONSTRUCTION

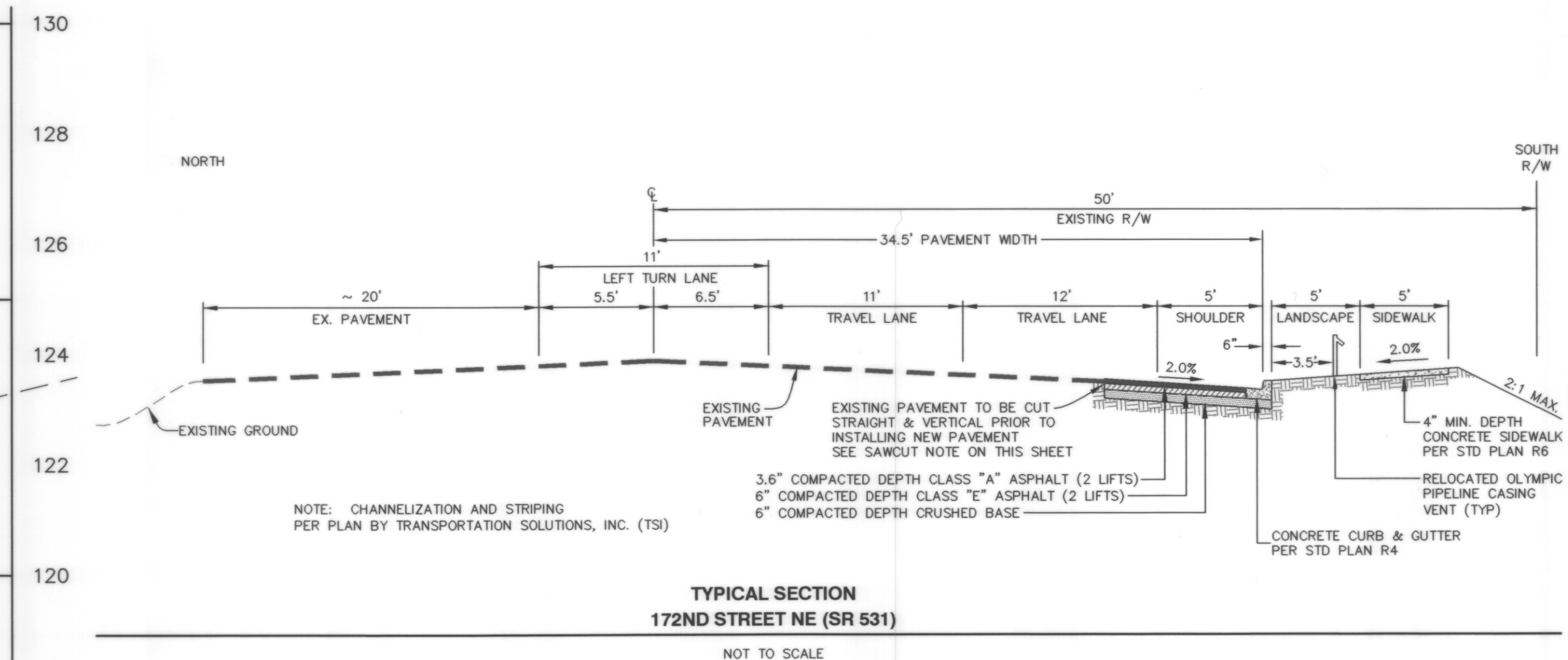
NOT TO SCALE



NOTE: CHANNELIZATION AND STRIPING PER PLAN BY TRANSPORTATION SOLUTIONS, INC. (TSI)

TYPICAL SECTION
43RD AVENUE NE

NOT TO SCALE



SAWCUT NOTE:

SAWCUTS OF EXISTING PAVEMENT SHALL BE NEAT-LINE CUTS MADE BY SAWCUTTING A CONTINUOUS LINE. CLEAN, HEAT AND TACK EDGES WITH SEALER SS-1 AND SEAL WITH HOT ASPHALT CEMENT. MINIMUM WIDTH OF NEW PAVEMENT SHALL BE 4'.

AS-BUILT DRAWING APPROVAL

THIS PLAN SHEET HAS BEEN REVIEWED AND APPROVED PER THE CONDITIONS ON THE TITLE SHEET.

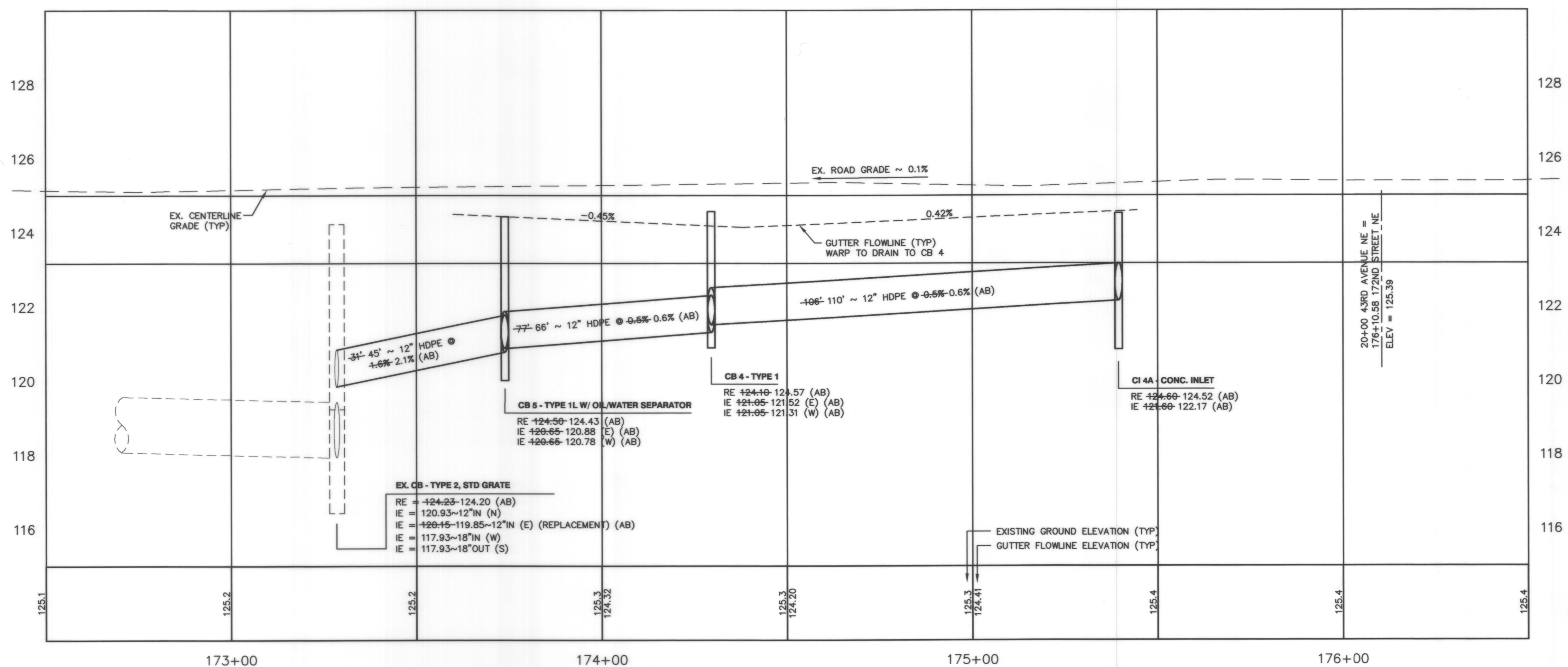
BY: *[Signature]*
City Engineer, CITY OF ARLINGTON
DATE: 06/16/2009

WORK IN 172ND ST. R/W

A RIGHT-OF-WAY PERMIT IS REQUIRED FROM THE CITY FOR ANY UTILITY INSTALLATION WITHIN 172ND ST. N.E. ROADWAY RESTORATION SHALL BE PER COA STD PLAN R-23 (CDF IS REQUIRED BACKFILL). STEEL ROADWAY PLATES SHALL BE RECESSED IN THE ASPHALT 3" MINIMUM AND FITTED TIGHTLY TO PREVENT MOVEMENT, THEN COVERED WITH ASPHALT (COLD MIX) FOR TRAFFIC WHILE CDF CURES. AFTER THE CDF HAS CURED TO BEAR TRAFFIC, THE INSTALLATION OF THE PERMANENT ASPHALT REPAIR SHALL OCCUR.

RECORD DRAWING NOTE

THE IMPROVEMENTS NOTES AS "(AB)" WITHIN THESE RECORD DRAWINGS WERE CONSTRUCTED PER THE "SITE CIVIL CONSTRUCTION PLANS FOR WHIDBEY ISLAND BANK" PREPARED BY HGA-BURKHOLDER ASSOCIATES, LLC AND APPROVED BY THE CITY OF ARLINGTON ON FEBRUARY 15, 2007. ONLY INFORMATION NOTED AS "(AB)" ON THESE RECORD DRAWINGS PREPARED BY PACIFIC SURVEYING AND ENGINEERING HAS BEEN VERIFIED AND FIELD SURVEYED OR MEASURED DURING CONSTRUCTION.



STORM DRAINAGE PROFILE - SR 531 (172ND STREET N.E.)

SCALE: 1" = 20' HORIZONTAL
1" = 2' VERTICAL

RECORD DRAWINGS

PWD20080095

WHIDBEY ISLAND BANK
ARLINGTON, WASHINGTON
SITE CIVIL CONSTRUCTION PLANS

ROAD & STORM DRAINAGE PROFILES

JOB No. 2008076

SHEET

06
OF
8



INTERGROUP DEVELOPMENT
PO BOX 4055
BELLINGHAM, WA 98227
(360) 303-3302

