

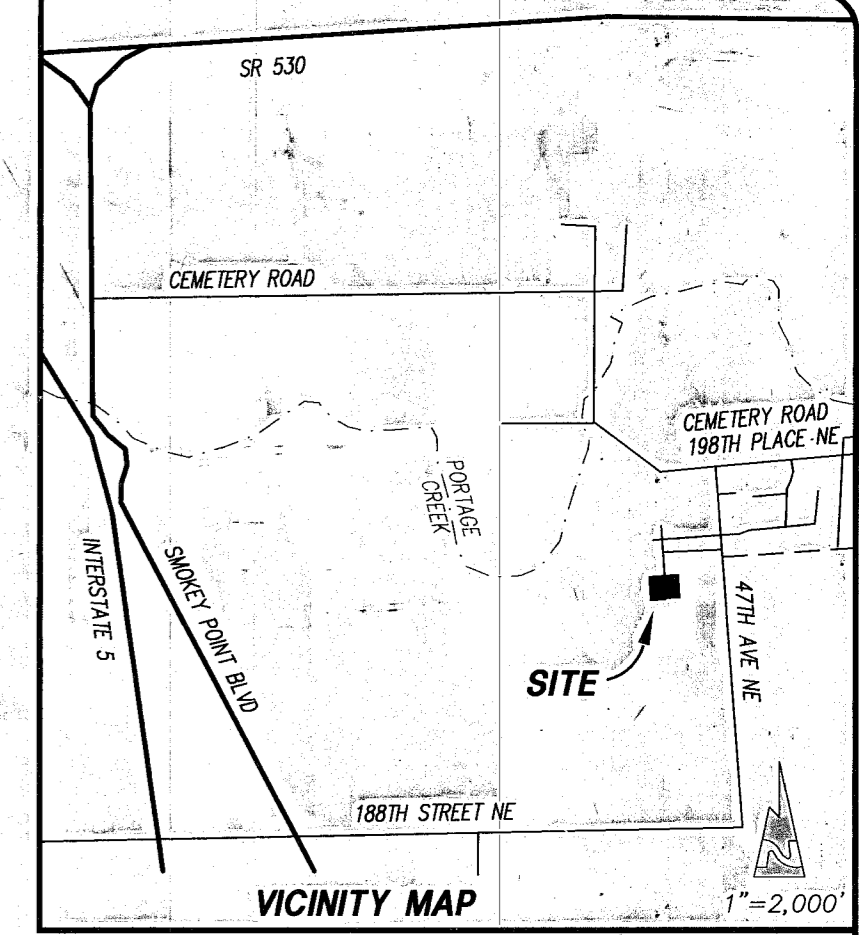
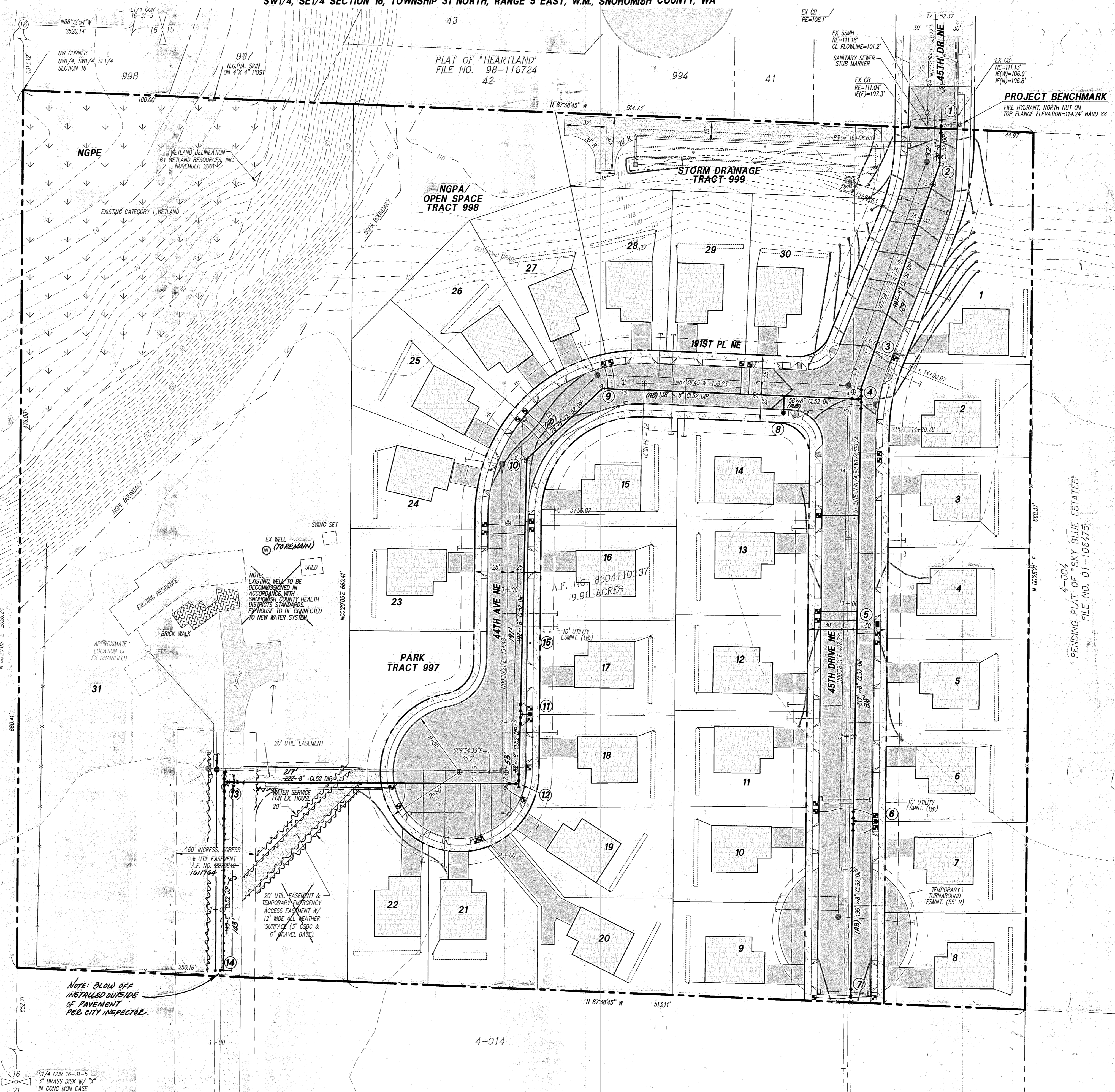
DATUM: NAVD 88
 BENCH: NORTH NUT ON TOP FLANGE OF FIRE HYDRANT LOCATED WITHIN 45TH DR NE AS SHOWN HEREON
 ELEV = 114.72
 (NAVD 88 VERTICAL DATUM BASED ON GPS TO SNOHOMISH COUNTY SURVEY CONTROL POINT 1448.)
 TO CONVERT TO NGVD29 SUBTRACT 3.70'

CONSTRUCTION NOTES:

- 1 REMOVE EX 8" CAP & CONNECT TO EX 8" WATER MAIN. INSTALL: 1-8" CV (FLM)
- 2 INSTALL: 1-8" 22 1/2" BEND (M) W/ THRUST BLOCK STA 16+42.0, 5.1' RT
- 3 INSTALL: 3/4" WATER SERVICE (1p)
- 4 INSTALL: 1-8" 90° TEE W/ THRUST BLOCK STA 16+42.0, 5.1' RT
 1-8" 22 1/2" BEND (FLM) W/ THRUST BLOCK STA 14+55.1, 6.6' RT
- 5 INSTALL: 1-AIR & VACUUM RELEASE VALVE ASSEMBLY PER STD PLAN W-9 STA 13+15.0, 23.0' RT
- 6 INSTALL: FIRE HYDRANT ASSEMBLY STA 11+36.3, 23.0' RT FLD ELEV = 126.8' PER STD PLAN W-1 2-8" CV (FLM)
- 7 INSTALL: 1-2" B.O. ASSEMBLY W/ THRUST BLOCK PER STD PLAN W-5 STA 10+03.0, 5.0' RT
- 8 INSTALL: FIRE HYDRANT ASSEMBLY STA 6+21.6, 18.0' RT FLD ELEV = 126.8' PER STD PLAN W-1
- 9 INSTALL: 1-8" 45° BEND (M) W/ THRUST BLOCK STA 4+83.6, 0.3' LT
- 10 INSTALL: 1-8" 45° BEND (M) W/ THRUST BLOCK STA 4+83.6, 0.3' LT
- 11 INSTALL: FIRE HYDRANT ASSEMBLY STA 2+06.4, 18.0' RT FLD ELEV = 126.8' PER STD PLAN W-1 2-8" CV (FLM)
- 12 INSTALL: 1-8" 90° TEE W/ THRUST BLOCK STA 1+53.9, 3.8' RT
 1-CAP W/ THRUST BLOCK STA 1+53.9, 3.8' RT
- 13 INSTALL: 1-8" 90° TEE W/ THRUST BLOCK STA 1+53.9, 3.8' RT
 3-8" CV (FLM) W/ THRUST BLOCK STA 2+96.2, 6.0' RT
- 14 INSTALL: 1-2" B.O. ASSEMBLY W/ THRUST BLOCK PER STD PLAN W-5 STA 1+54.8, 6.0' RT
- 15 INSTALL: 1-1" WATER SERVICE SAMPLING STATION PER CITY STANDARDS STA 2+96.0, 17.8' RT

GENERAL NOTES FOR WATER SYSTEM

1. ALL WORKMANSHIP AND MATERIAL SHALL BE IN ACCORDANCE WITH CITY OF ARLINGTON STANDARDS AND THE MOST CURRENT COPY OF THE STATE OF WASHINGTON / APWA STANDARD SPECIFICATIONS FOR ROAD, BRIDGE AND MUNICIPAL CONSTRUCTION.
2. A PRECONSTRUCTION MEETING SHALL BE HELD WITH THE CITY PRIOR TO THE START OF CONSTRUCTION.
3. IT SHALL BE THE RESPONSIBILITY OF THE CONTRACTOR TO LOCATE OR HAVE LOCATED BY THE APPROPRIATE COMPANIES ALL UTILITIES PRIOR TO BEGINNING CONSTRUCTION.
4. WATER PIPE SHALL BE NEW DUCTILE IRON PIPE (DI) CLASS 52 CEMENT-LINED UNLESS OTHERWISE SPECIFIED AND SHALL CONFORM TO ANS A21.51 (AWWA C 151). DI PIPE SHALL BE PUSH-ON JOINT (TYTON JOINT ONLY) OR MECHANICAL JOINT.
5. VALVES 12" AND SMALLER SHALL BE GATE VALVES WITH RESILIENT SEAT, NRS (NON RISING STEM) O-RING PACKING. VALVES SHALL BE EQUAL TO MUELLER A-2370, MAH, AMERICAN-80 "CRS", OR WATERVALV SERIES 500.
6. FITTINGS SHALL BE DUCTILE IRON SHORT BODY FOR PRESSURE RATING OF 150 PSI, UNLESS OTHERWISE NOTED.
7. FIRE HYDRANTS SHALL BE 5-1/4" MVD MUELLER A-423 ONLY. PAINT HYDRANT WITH CASE YELLOW NO. X-3472. M/F FOLLOWERS SHALL BE MEGA LOG. HYDRANT SHALL BE FITTED WITH A RED HEAD 5" STORE TO 4-1/2" NTS FEMALE ADAPTER STYLE NO. 5-37-MF-L WITH A METAL FACE CAP STYLE NO. SC-MF OR APPROVED EQUAL. SEE STANDARD PLAN W1.
8. ALL LINES SHALL BE DISINFECTED, FLUSHED AND PRESSURE TESTED IN CONFORMANCE WITH WSDOT/APWA STANDARDS AND SPECIFICATIONS. ALL PIPE SHALL BE TESTED AT 240 PSI. THE CONTRACTOR SHALL FURNISH ALL TEMPORARY PLUGS, TESTING DEVICES, ETC. THE CITY SHALL BE PRESENT FOR ALL TESTING. THE CITY WILL TAKE PURITY TESTS AND CONNECTION WILL BE AUTHORIZED FOLLOWING PASSING OF THE TESTS.
9. THE CONTRACTOR SHALL NOT OPERATE ANY VALVE OR PART OF THE CITY WATER SYSTEM WITHOUT NOTIFICATION AND SPECIFIC SUPERVISION OF THE CITY UTILITY DEPARTMENT. THE CONTRACTOR SHALL MAKE ALL CONNECTIONS TO THE SYSTEM REQUIRED AFTER MAKING ARRANGEMENTS WITH THE CITY IN ADVANCE.
10. INSTALLATION OF PIPE, FITTINGS AND VALVES, HYDRANTS AND APPURTENANCES SHALL CONFORM TO WSDOT/APWA STANDARD SPECIFICATIONS. COVER SHALL BE 36 TO 48 INCHES OVER THE TOP OF PIPE UNLESS OTHERWISE NOTED ON PLANS.
11. PIPE BEDDING FOR WATER PIPE: IT IS ANTICIPATED THAT NATIVE MATERIAL WILL BE SUITABLE FOR PIPE BEDDING. ACTUAL DETERMINATION OF SUITABILITY WILL BE DETERMINED BY THE CITY DURING CONSTRUCTION BASED ON OBSERVATION OF THE NATIVE MATERIAL. IF THE NATIVE MATERIAL IS JUDGED UNSUITABLE FOR PIPE BEDDING, IMPORTED PIPE BEDDING GRAVEL SHALL BE FURNISHED AND PLACED BY THE CONTRACTOR. (SEE SANITARY SEWER MATERIAL SPECIFICATION NO. 4. BEDDING SHALL BE LIMITED TO THE MAXIMUM AS SHOWN ON THE ROAD PIPE TYPICAL TRENCH DETAIL.)
12. SERVICES, BLOW-OFFS AND MISCELLANEOUS DETAILS SHALL BE AS SHOWN IN THE CITY OF ARLINGTON PUBLIC WORKS CONSTRUCTION STANDARDS AND SPECIFICATIONS SECTION 2 - WATER.
13. THE CONTRACTOR WILL BEGIN INSTALLATION OF THE WATER LINE BY INSTALLING A TEMPORARY RESILIENT SEAT VALVE AND AN APPROVED DOUBLE CHECK VALVE ASSEMBLY AT THE END OF THE EXISTING 8" WATER MAIN.
14. PROVE BLUE STREET REFLECTOR(S) ON THE HYDRANT SIDE OF CENTERLINE TO INDICATE HYDRANT LOCATIONS. THE TOP OF THE HYDRANT(S) SHALL BE COLORED GREEN.



ABBREVIATIONS TABLE

(A/P)	= ANGLE POINT	(OWS)	= OIL WATER SEPARATOR
(BC)	= BOTTOM OF CURB-F/L	(PC)	= POINT OF CURVATURE
(BW)	= BOTTOM OF WALL	(PI)	= POINT OF INTERSECTION
(BL)	= BLOWOFF	(PL)	= PROPERTY LINE
(BK)	= BREAK/GRADE BREAK	(PP)	= POWER UTILITY POLE
(CB)	= CATCH BASIN	(PT)	= POINT OF TANGENCY
(CBU)	= COLLECTION BOX UNITS	(PWT)	= PAVEMENT
(CE)	= CULVERT END	(SD)	= STORM DRAIN
(CL)	= CENTER LINE	(SL)	= SOLID LIG LID
(CO)	= CLEANOUT	(SS)	= SANITARY SEWER
(CSBO)	= CR. SURF'S BASE COURSE	(SSM)	= SEWER MANHOLE
(CSTC)	= CR. SURF'S TOP COURSE	(STR)	= STRUCTURE
(CTR)	= CENTER	(TBR)	= TO BE REMOVED
(CPI)	= CENTER	(TC)	= TOP OF CURB
(DIP)	= DUCTILE IRON PIPE	(TIC)	= THIRD CURB INLET
(DNG)	= DRAINAGE	(TOB)	= TOP OF BANK
(EQA)	= EDGE OF ASPHALT	(TOW)	= TOP OF WALL
(EGC)	= EDGE OF GRAVEL	(TYP)	= TYPICAL
(EOMT)	= EASEMENT	(Y-X)	= TYPE-CB/WH
(EX)	= EXISTING	(Y-1)	= TYPE 1 CS
(G/L)	= GUTTER LINE OF CURB	(YD)	= YARD DRAIN
(GR)	= GRADE	(V)	= VANED GRADE
(GR4)	= GRAVEL	(W)	= WATER/WATER MAIN
(H)	= FIRE HYDRANT	(WCR)	= WHEEL CHAIR RAMP
(HOC)	= FACE OF CURB	(WM)	= WATER METER
(INT)	= INTERSECTION	(WV)	= WATER VALVE
(LL)	= LOT LINE	(WV)	= WATER VALVE
(MB)	= MAILBOX	(X a)	= 1/parts DELTA

LEGEND

EXISTING	DESCRIPTION	PROPOSED
BSBL	BLDG SETBACK LINE (BSBL)	BSBL
BO	BLOW-OFF (BO)	BO
CB	CATCH BASIN (1y-1)	CB
CB	CATCH BASIN (1y-2)	CB
CM	CASE MONUMENT	CM
CONC	CONCRETE MON	CONC
SD	CULVERTS (CE-CULV END)	X-12" SD
DD	DRAINAGE DITCH/SWALE	DD
DFP	DRAINAGE FLOW PATTERNS	DFP
D/W	D/W CURBOUT	D/W
ESMT	EASEMENTS (ESMT)	ESMT
EOA	EDGE PAVEMENT (EOA)	EOA
FH	FIRE HYDRANT (FH)	FH
LL	LOT LINE (LL)	LL
MB	MAILBOXES (MB, CRU)	MB
PL	PROPERTY LINE (PL)	PL
R/W	RIGHT OF WAY (R/W)	R/W
CA	ROAD CENTER (C/R) LINE	CA
SM	SANITARY SEWER MANHOLE	SM
SC	SECTION CORNER	SC
SS	SEWER STUBOUT	SS
SD	STORM PIPE (SD)	X-12" SD
SD	STORM STUBOUT	SD
UP	UTILITY POLE (PP, UP)	X-8" BLP
W	WATER LINE	W
WS	WATER SERVICE (WS)	WS
WV	WATER VALVE (WV)	WV
WCR	WHEEL CHAIR RAMP (WCR)	WCR
YD	YARD BASIN (YD)	YD

CONSTRUCTION DRAWING REVIEW ACKNOWLEDGMENT

THIS PLAN SHEET HAS BEEN REVIEWED AND EVALUATED FOR GENERAL COMPLIANCE WITH THE CITY OF ARLINGTON CODES AND ORDINANCES. CONFORMANCE OF THIS DESIGN WITH ALL APPLICABLE LAWS AND REGULATIONS IS THE FULL AND COMPLETE RESPONSIBILITY OF THE LICENSED DESIGN ENGINEER, WHOSE STAMP AND SIGNATURE APPEAR ON THIS SHEET. ACKNOWLEDGMENT OF CONSTRUCTION DRAWING REVIEW DOES NOT IMPLY CITY APPROVAL FOR CONSTRUCTION ACTIVITIES THAT REQUIRE OTHER COUNTY, STATE OR FEDERAL PERMIT REVIEW AND APPROVAL. THE PROPERTY OWNER AND LICENSED DESIGN ENGINEER SHALL BE RESPONSIBLE FOR THE ACQUISITION AND COMPLIANCE OF ALL APPLICABLE PERMITS AND/OR AUTHORIZATIONS WHICH MAY INCLUDE, BUT NOT LIMITED TO, WSDOT HYDRAULIC PROJECT APPROVAL (HPA), INSIDE NOTICE OF INTENT (NOI), ANY CORP OF ENGINEERS FULL PERMITS AND THE REQUIREMENTS OF THE ENDANGERED SPECIES ACT.

BY: *[Signature]*
 CITY ENGINEER
 DATE: 10/29/02
 THIS APPROVAL VALID FOR 18 MONTHS

DATE	REVISION/ISSUED
7/30/02	ISSUED
9/17/02	PER CITY OF ARL. & SNO. CO. REVIEW COMMENTS
10/22/02	PER CITY OF ARLINGTON REVIEW COMMENTS/CLIENT
2/11/03	AS-BUILT
3/21/03	PER SNO CO 1ST AB REVIEW

PEAK ENGINEERING INC.
 1720 GROVE STREET, MARYSVILLE, WASHINGTON 98270
 (360) 658-6986 / FAX: (360) 658-7826

SCOTT STEVENS
 2978
 REGISTERED PROFESSIONAL ENGINEER
 EXPIRES 07/16/2003
 DATE: 10/23/02

SURVEY & TOPOGRAPHIC INFORMATION PROVIDED BY:
 METRON AND ASSOCIATES, INC.
 LAND SURVEYS, MAPS & PLANNING
 307 N. OLYMPIC, STE 205
 ARLINGTON, WASHINGTON 98223
 360-435-3777

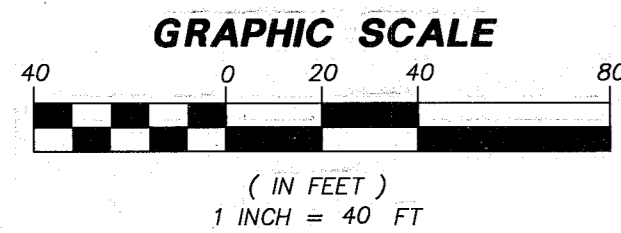
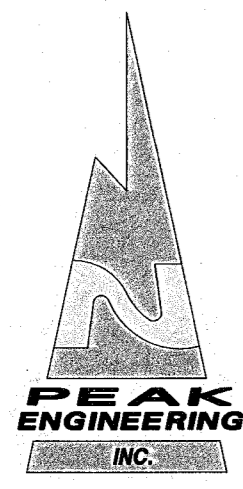
APPLICANT
 DARLING INVESTMENTS, LLC
 7323 126TH AVE NE
 KIRKLAND, WA 98033
 (425) 239-9925

CITY OF ARLINGTON AS-BUILT CONSTRUCTION DRAWING REVIEW ACKNOWLEDGMENT
 THIS AS-BUILT PLAN SHEET HAS BEEN REVIEWED AND ACCEPTED AS A RECORD DRAWING. THE LICENSED DESIGN ENGINEER WHOSE STAMP AND SIGNATURE APPEAR ON THIS SHEET ASSUMES FULL AND COMPLETE RESPONSIBILITY FOR THE ACCURACY THEREIN.
 BY: *[Signature]*
 CITY ENGINEER
 DATE: 5/20/03

CALL 48 HOURS BEFORE YOU DIG 1-800-424-5555
 THE CONTRACTOR SHALL VERIFY THE LOCATION OF ALL UTILITIES PRIOR TO ANY CONSTRUCTION. AGENCIES INVOLVED SHALL BE NOTIFIED WITHIN A REASONABLE TIME PRIOR TO THE START OF CONSTRUCTION.

PFN 01-110960 SD WALNUT RIDGE WATER EXTENSION PLAN & NOTES

PROJECT NO. 01373
DWG W1
 OF 1



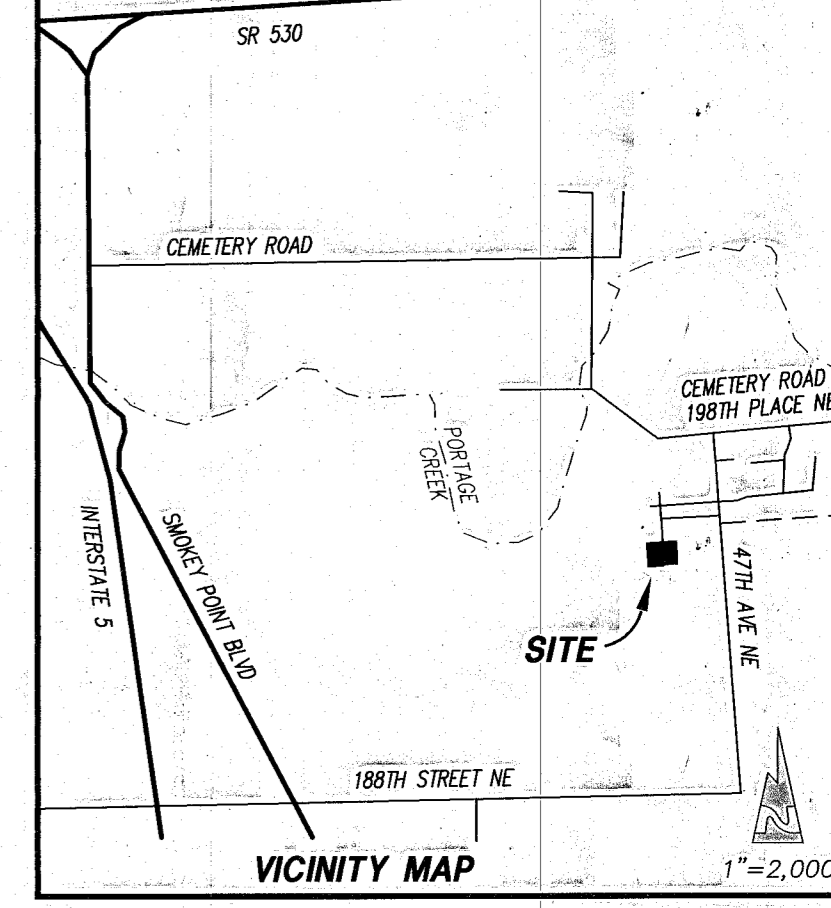
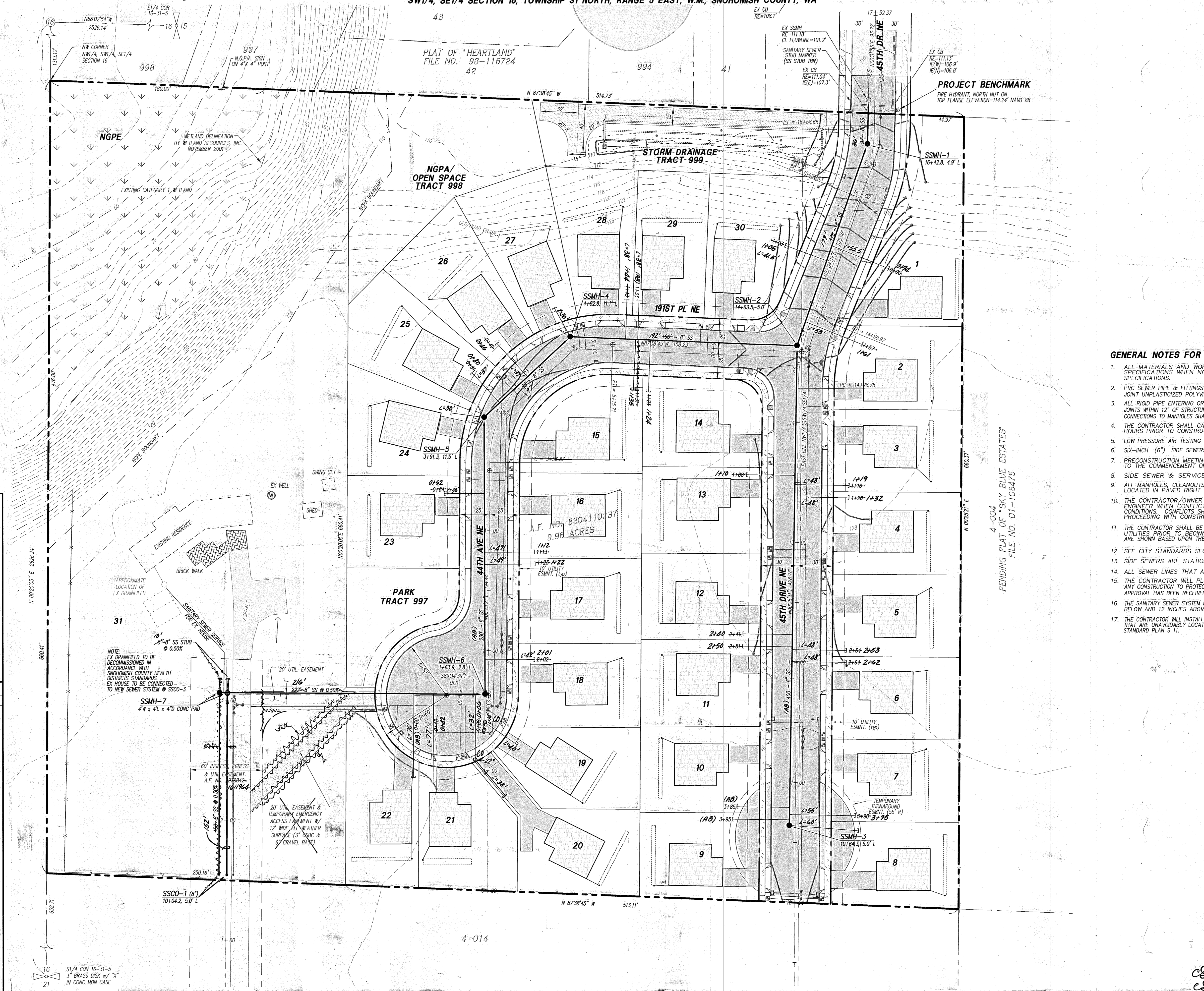
DATUM: NAVD 88
BENCH: NORTH NUT ON TOP FLANGE OF FIRE HYDRANT LOCATED WITHIN 45TH DR NE AS SHOWN HEREON ELEV = 114.22
 (NAVD 88 VERTICAL DATUM BASED ON GPS TIE TO SNOHOMISH COUNTY SURVEY CONTROL POINT 1448) TO CONVERT TO NAD83 SUBTRACT 3.70'

ABBREVIATIONS TABLE

(A/P)	= ANGLE POINT	(OWS)	= OIL WATER SEPARATOR
(BC)	= BOTTOM OF CURB-F/L	(PC)	= POINT OF CURVATURE
(BO)	= BOTTOM OF WALL	(PI)	= POINT OF INTERSECTION
(B)	= BLOWOFF	(PL)	= PROPERTY LINE
(BRK)	= BREAK/GRADE BREAK	(PP)	= POWER/UTILITY POLE
(CB)	= CATCH BASIN	(PT)	= POINT OF TANGENCY
(CBU)	= COLLECTION BOX UNITS	(P/WT)	= PAVEMENT
(CE)	= CULVERT END	(SD)	= STORM DRAIN
(CL)	= CENTER LINE	(SLL)	= SOLID LAG LID
(CO)	= CLEANOUT	(SS)	= SANITARY SEWER
(CSBC)	= CR SURF'G BASE COURSE	(SSMH)	= SEWER MANHOLE
(CSIC)	= CR SURF'G TOP COURSE	(STR)	= STRUCTURE
(CTR)	= CENTER	(TR)	= TO BE REMOVED
(DIP)	= DUCTILE IRON PIPE	(TC)	= TOP OF CURB
(DRNG)	= DRAINAGE	(TCL)	= THIRD CURB INLET
(EQA)	= EDGE OF ASPHALT	(TBR)	= TOP OF BANK
(EGC)	= EDGE OF GRAVEL	(TW)	= TOP OF WALL
(ESMT)	= EASEMENT	(TYP)	= TYPICAL
(EX)	= EXISTING	(TYP-1)	= TYPE 1 CB
(G/L)	= GUTTER LINE OF CURB	(TYP-2)	= TYPE 2 CB
(GR)	= GRAVEL	(YD)	= YARD DRAIN
(GRV)	= GRAVEL	(W)	= WAND GRATE
(H)	= FIRE HYDRANT	(W/W)	= WATER/WATER MAIN
(FAC)	= FACE OF CURB	(WCR)	= WHEEL CHAIR RAMP
(INT)	= INTERSECTION	(W)	= WATER METER
(LL)	= LOT LINE	(WV)	= WATER VALVE
(MB)	= MAILBOX	(1/4)	= 1/4 PARTS DELTA

LEGEND

EXISTING	DESCRIPTION	PROPOSED
BSBL	BUILD SETBACK LINE (BSBL)	ESBL
BO	BLOW-OFF (BO)	
CB	CATCH BASIN (1y-1)	
CB	CATCH BASIN (1y-2)	
CM	CASE MONUMENT	
CM	CONCRETE MON	
CE	CULVERTS (CE=CULV END)	X-12" SD
DD	DRAINAGE DITCH/SWALE	
DF	DRAINAGE FLOW PATTERNS	
CR	CR CURBOUT	
ESMT	EASEMENTS (ESMT)	
EQA	EDGE PAVEMENT (EQA)	
FA	FIRE HYDRANT (FH)	
LA	LOT LINE (L/L)	
MB	MAILBOXES (MB, CBU)	
PL	PROPERTY LINE (P/L)	
R/W	RIGHT OF WAY (R/W)	
CA	ROAD CENTER (CTR) LINE	
SM	SANITARY SEWER MANHOLE	
SC	SEWER SECTION CORNER	
SD	SEWER STUBOUT	
SD	STORM PIPE (SD)	X-12" SD
SD	STORM STUBOUT	
UP	UTILITY POLE (PP, UP)	
W	WATER LINE	X-8" D.I.P.
WS	WATER SERVICE (WS)	
WV	WATER VALVE (WV)	
WCR	WHEEL CHAIR RAMP (WCR)	
YB	YARD BASIN (YB)	



- GENERAL NOTES FOR SEWER SYSTEM**
- ALL MATERIALS AND WORKMANSHIP SHALL CONFORM FOR CURRENT A.P.W.A. SPECIFICATIONS WHEN NOT COVERED BY THE CITY OF ARLINGTON STANDARD SPECIFICATIONS.
 - PVC SEWER PIPE & FITTINGS SHALL BE INTEGRAL WALL BELL & SPIGOT RUBBER GASKET JOINT UNPLASTICIZED POLYVINYL CHLORIDE PIPE CONFORMING TO ASTM 3034 SDR 35.
 - ALL RIGID PIPE ENTERING OR LEAVING THE MANHOLE SHALL BE PROVIDED WITH FLEXIBLE JOINTS WITHIN 12" OF STRUCTURES AND PLACED ON FIRMLY COMPACTED BEDDING. ALL PVC PIPE CONNECTIONS TO MANHOLES SHALL BE MADE WITH GASKETED ADAPTERS AS APPROVED BY THE CITY.
 - THE CONTRACTOR SHALL CALL UTILITY UNDERGROUND LOCATE 1-800-424-555 48-HOURS PRIOR TO CONSTRUCTION AND NOTIFY THE CITY UTILITIES DEPARTMENT.
 - LOW PRESSURE AIR TESTING SHALL BE DONE BY THE CONTRACTOR PER CITY STANDARDS.
 - SIX-INCH (6") SIDE SEWERS SHALL BE TEE FITTINGS & MAINTAIN A 2% MINIMUM GRADE.
 - PRECONSTRUCTION MEETING BETWEEN CITY AND CONTRACTOR TO BE HELD PRIOR TO THE COMMENCEMENT OF ANY SITE WORK.
 - SIDE SEWER & SERVICE MANHOLE PER STANDARD PLAN S2.
 - ALL MANHOLES, CLEANOUTS, RINGS AND COVERS SHALL BE LOCKING, EXCEPT WHEN LOCATED IN PAVED RIGHT OF WAY, UNLESS OTHERWISE DIRECTED BY CITY.
 - THE CONTRACTOR/OWNER SHALL NOTIFY PEAK ENGINEERING, INC. AND THE CITY ENGINEER WHEN CONFLICTS OCCUR BETWEEN THE PLANS AND OBSERVED FIELD CONDITIONS. CONFLICTS SHALL BE RESOLVED WITH THE PROJECT ENGINEER PRIOR TO PROCEEDING WITH CONSTRUCTION.
 - THE CONTRACTOR SHALL BE RESPONSIBLE FOR LOCATING AND PROTECTING ALL EXISTING UTILITIES PRIOR TO BEGINNING CONSTRUCTION. LOCATIONS OF EXISTING UTILITIES ARE SHOWN BASED UPON THE BEST AVAILABLE RECORDS AND ARE SUBJECT TO VARIATIONS.
 - SEE CITY STANDARDS SECTION 3-SANITARY SEWER.
 - SIDE SEWERS ARE STATIONED FROM THE DOWNSTREAM MANHOLE.
 - ALL SEWER LINES THAT ARE 14" OR GREATER IN DEPTH SHALL BE C-900 PVC.
 - THE CONTRACTOR WILL PLUG THE EXISTING SANITARY SEWER MANHOLE PRIOR TO ANY CONSTRUCTION TO PROTECT THE SYSTEM. THE PLUG SHALL NOT BE REMOVED UNTIL FINAL APPROVAL HAS BEEN RECEIVED FROM THE CITY OF ARLINGTON.
 - THE SANITARY SEWER SYSTEM PIPING SHALL BE INSTALLED WITH PEA GRAVEL BEDDING 4 INCHES BELOW AND 12 INCHES ABOVE THE PIPE FOR THE FULL TRENCH WIDTH.
 - THE CONTRACTOR WILL INSTALL A CLEANOUT (AT GRADE) FOR ALL SANITARY SIDE SEWER STUBS THAT ARE UNAVOIDABLY LOCATED UNDER DRIVEWAYS. THE CLEANOUTS WILL BE PER STANDARD PLAN S 11.

CONSTRUCTION DRAWING REVIEW ACKNOWLEDGMENT

THIS PLAN SHEET HAS BEEN REVIEWED AND EVALUATED FOR GENERAL COMPLIANCE WITH THE CITY OF ARLINGTON CODES AND ORDINANCES. CONFORMANCE OF THIS DESIGN WITH ALL APPLICABLE LAWS AND REGULATIONS IS THE FULL AND COMPLETE RESPONSIBILITY OF THE LICENSED DESIGN ENGINEER, WHOSE STAMP AND SIGNATURE APPEAR ON THIS SHEET. ACKNOWLEDGMENT OF CONSTRUCTION DRAWING REVIEW DOES NOT IMPLY CITY APPROVAL FOR CONSTRUCTION ACTIVITIES THAT REQUIRE OTHER COUNTY, STATE OR FEDERAL PERMIT REVIEW AND APPROVAL. THE PROPERTY OWNER AND LICENSED DESIGN ENGINEER SHALL BE RESPONSIBLE FOR THE ACQUISITION AND COMPLIANCE OF ALL APPLICABLE PERMITS AND/OR AUTHORIZATIONS WHICH MAY INCLUDE, BUT NOT LIMITED TO, WSPM HYDRAULIC PROJECT APPROVAL (HPA), INSIDE NOTICE OF INTENT (NOI), ANY CORP OF ENGINEERS FULL PERMITS AND THE REQUIREMENTS OF THE ENDANGERED SPECIES ACT.

BY: *[Signature]*
 CITY ENGINEER
 DATE: 10/29/02
 THIS APPROVAL VALID FOR 18 MONTHS

DATE	REVISION/ISSUED
7/30/02	ISSUED
9/17/02	PER CITY REVIEW COMMENTS
10/22/02	PER CITY REVIEW COMMENTS/CLIENT
2/11/03	AS-BUILT
3/21/03	PER 310 GO 1ST AD REVIEW

PEAK ENGINEERING INC.
 1720 GROVE STREET, MARYSVILLE, WASHINGTON 98270
 (360) 658-6986 FAX: (360) 658-7826

STATE OF WASHINGTON
 29726
 20151001
 PROFESSIONAL ENGINEER
 EXPIRES 07/16/2003
 DATE: 10/23/02

SURVEY & TOPOGRAPHIC INFORMATION PROVIDED BY:
 BEYRON AND ASSOCIATES, INC.
 LAND SURVEYS, MAPS & PLANNING
 3307 N. OLYMPIC, STE 205
 ARLINGTON, WASHINGTON 98223
 360-435-3777

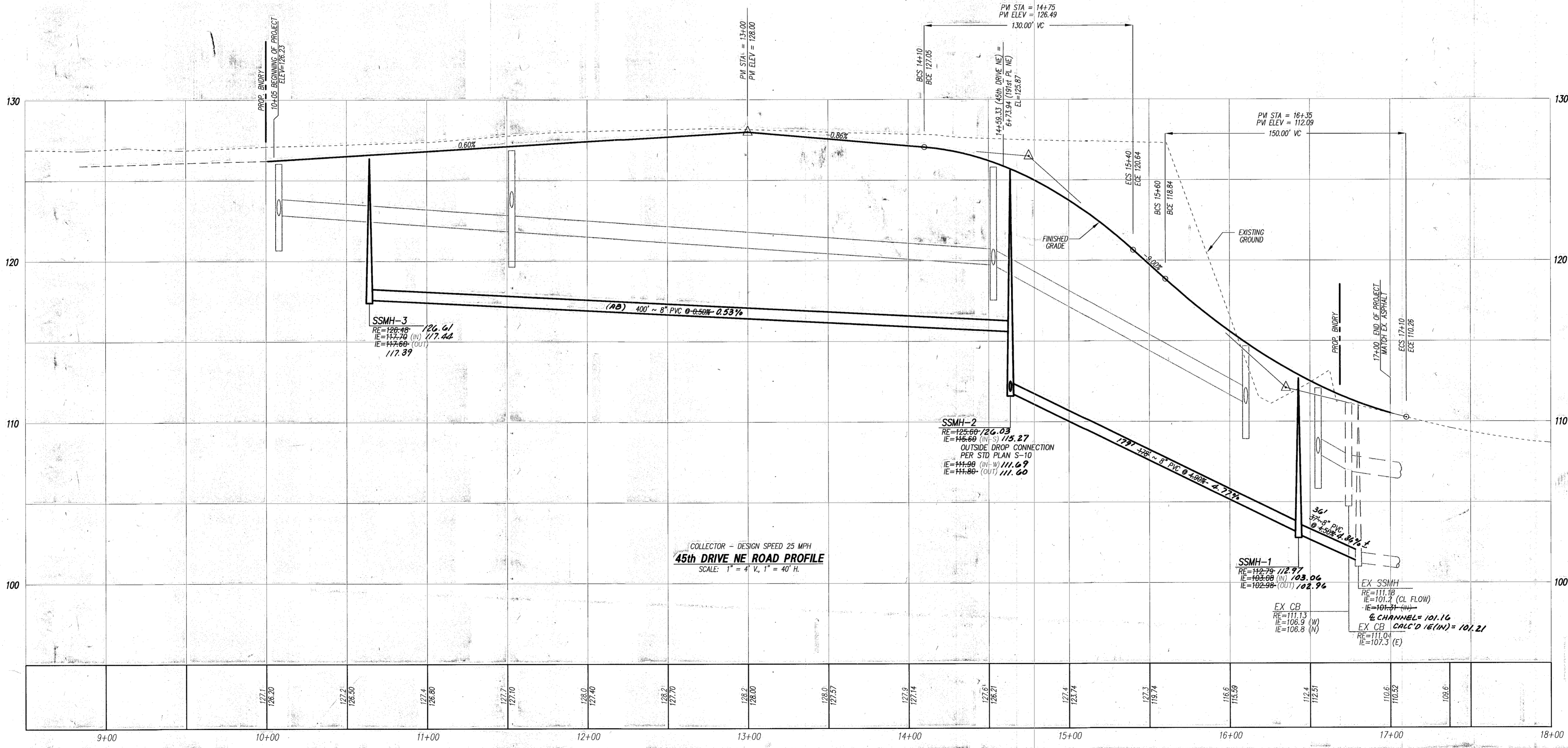
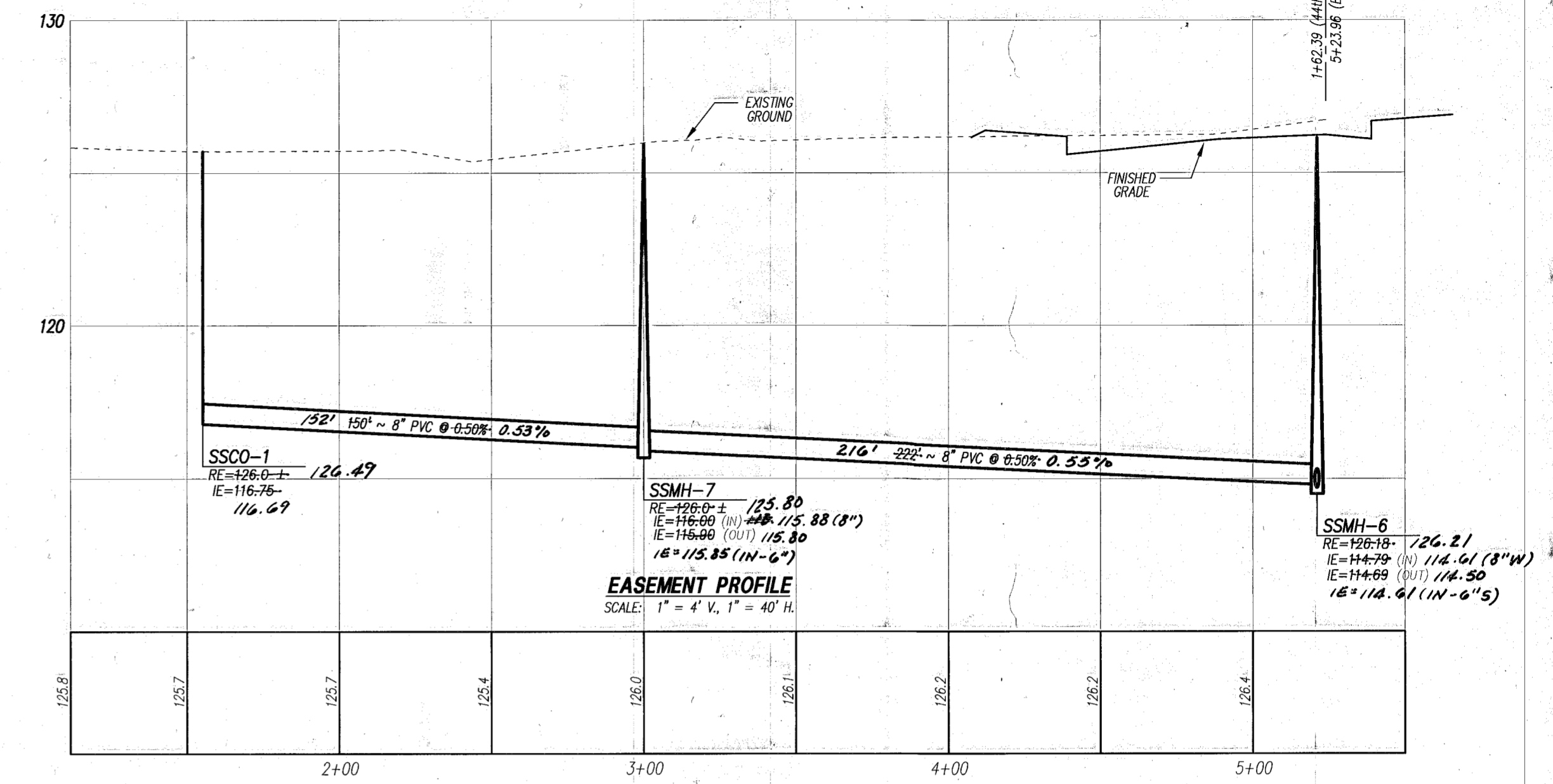
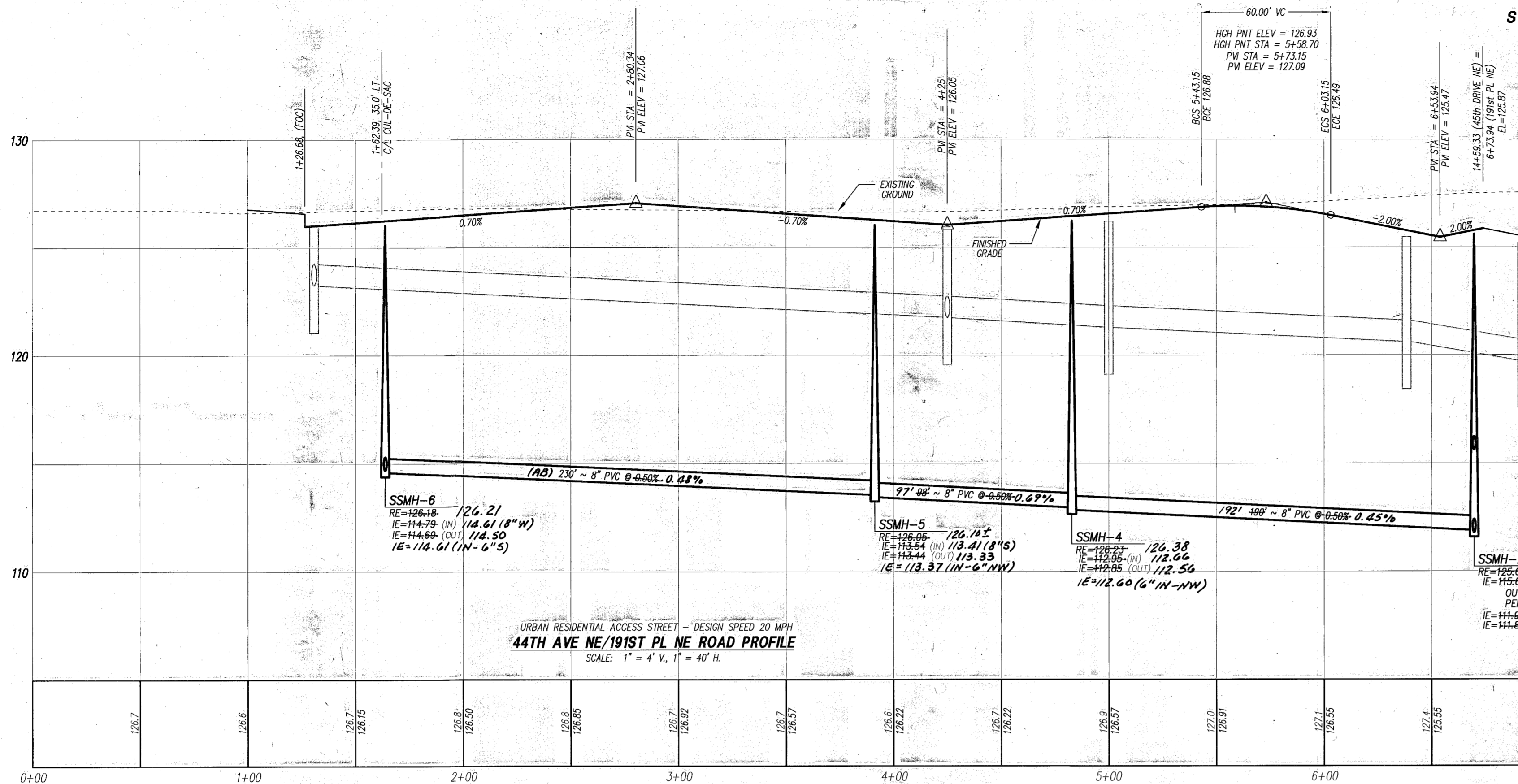
APPLICANT
 DARLING INVESTMENTS, LLC
 7323 126TH AVE NE
 KIRKLAND, WA 98033
 (425) 239-9925

CITY OF ARLINGTON
 AS-BUILT CONSTRUCTION DRAWING REVIEW ACKNOWLEDGMENT
 THIS AS-BUILT PLAN SHEET HAS BEEN REVIEWED AND ACCEPTED AS A RECORD DRAWING. THE LICENSED DESIGN ENGINEER WHOSE STAMP AND SIGNATURE APPEAR ON THIS SHEET ASSUMES FULL AND COMPLETE RESPONSIBILITY FOR THE ACCURACY THEREIN.
 BY: *[Signature]*
 CITY ENGINEER
 DATE: 5/20/03

CALL 48 HOURS BEFORE YOU DIG 1-800-424-5555
 THE CONTRACTOR SHALL VERIFY THE LOCATION OF ALL UTILITIES PRIOR TO ANY CONSTRUCTION. AGENCIES INVOLVED SHALL BE NOTIFIED WITHIN A REASONABLE TIME PRIOR TO THE START OF CONSTRUCTION.

PFN 01-110960 SD WALNUT RIDGE SANITARY SEWER PLAN & NOTES

PROJECT NO. 01373
DWG SS1
OF 2



DATUM: NAVD 88
BENCH: NORTH NUT ON TOP FLANGE OF FIRE HYDRANT LOCATED WITHIN 45TH DR NE AS SHOWN HEREON
 BENCH = 114.22
 (NAVD 88 VERTICAL DATUM BASED ON GPS TIE TO SNOHOMISH COUNTY SURVEY CONTROL PVI 1448.)
 TO CONVERT TO NAVD29 SUBTRACT 3.70'

CONSTRUCTION DRAWING REVIEW ACKNOWLEDGMENT

THIS PLAN SHEET HAS BEEN REVIEWED AND EVALUATED FOR GENERAL COMPLIANCE WITH THE CITY OF ARLINGTON CODES AND ORDINANCES. CONFORMANCE OF THIS DESIGN WITH ALL APPLICABLE LAWS AND REGULATIONS IS THE FULL AND COMPLETE RESPONSIBILITY OF THE LICENSED DESIGN ENGINEER, WHOSE STAMP AND SIGNATURE APPEAR ON THIS SHEET. ACKNOWLEDGMENT OF CONSTRUCTION DRAWING REVIEW DOES NOT IMPLY CITY APPROVAL FOR CONSTRUCTION ACTIVITIES THAT REQUIRE OTHER COUNTY, STATE OR FEDERAL PERMIT REVIEW AND APPROVAL. THE PROPERTY OWNER AND LICENSED DESIGN ENGINEER SHALL BE RESPONSIBLE FOR THE ACQUISITION AND COMPLIANCE OF ALL APPLICABLE PERMITS AND/OR AUTHORIZATIONS WHICH MAY INCLUDE, BUT NOT LIMITED TO, WQDFW HYDRAULIC PROJECT APPROVAL (HPA), NOTICE OF INTENT (NOI), ANY CORP OF ENGINEERS FULL PERMITS AND THE REQUIREMENTS OF THE ENDANGERED SPECIES ACT.

BY: *[Signature]*
 CITY ENGINEER

DATE: 10/29/02
 THIS APPROVAL VALID FOR 18 MONTHS

DATE	REVISION/ISSUED
7/30/02	ISSUED
9/17/02	PER CITY REVIEW COMMENTS
10/22/02	PER CITY REVIEW COMMENTS/CLIENT
2/17/03	AS-BUILT
3/28/03	PER SMO CO 157 AB REVIEW

PEAK ENGINEERING INC.

1720 GROVE STREET, MARYSVILLE, WASHINGTON 98270
 (360) 658-6986 FAX: (360) 658-7826

C. SCOTT STEWART
 LICENSED PROFESSIONAL ENGINEER
 29726
 EXPIRES 07/16/2003
 DATE: 10/23/02

SURVEY & TOPOGRAPHIC INFORMATION PROVIDED BY:

MEIRON AND ASSOCIATES, INC.
 LAND SURVEYS, MAPS & PLANNING
 307 N. OLYMPIC, STE 205
 ARLINGTON, WASHINGTON 98223
 360-435-3777

APPLICANT

DARLING INVESTMENTS, LLC
 7323 126TH AVE NE
 KIRKLAND, WA 98033
 (425) 239-9925

CITY OF ARLINGTON AS-BUILT CONSTRUCTION DRAWING REVIEW ACKNOWLEDGMENT

THIS AS-BUILT PLAN SHEET HAS BEEN REVIEWED AND ACCEPTED AS A RECORD DRAWING. THE LICENSED DESIGN ENGINEER WHOSE STAMP AND SIGNATURE APPEAR ON THIS SHEET ASSUMES FULL AND COMPLETE RESPONSIBILITY FOR THE ACCURACY THEREIN.

BY: *[Signature]*
 CITY ENGINEER
 DATE: 5/20/03

CALL 48 HOURS BEFORE YOU DIG 1-800-424-5555

THE CONTRACTOR SHALL VERIFY THE LOCATION OF ALL UTILITIES PRIOR TO ANY CONSTRUCTION. AGENCIES INVOLVED SHALL BE NOTIFIED WITHIN A REASONABLE TIME PRIOR TO THE START OF CONSTRUCTION.

PFN: 01-110960 SD

WALNUT RIDGE

SANITARY SEWER PROFILES

AS-BUILT

PROJECT NO. 01373

DWG SS2

OF 2