

A PORTION OF SECTION 22, TOWNSHIP 31 NORTH, RANGE 5 EAST, W.M.

WATER NOTES

- ALL WORKMANSHIP AND MATERIAL SHALL BE IN ACCORDANCE WITH CITY OF ARLINGTON PUBLICS WORKS CONSTRUCTION STANDARDS AND SPECIFICATIONS (PWCS), AUGUST 1997, AND THE MOST CURRENT COPY OF THE STATE OF WASHINGTON/APWA STANDARD SPECIFICATIONS FOR ROAD, BRIDGE, AND MUNICIPAL CONSTRUCTION.
- A PRECONSTRUCTION MEETING SHALL BE HELD WITH THE CITY PRIOR TO THE START OF CONSTRUCTION.
- IT SHALL BE THE RESPONSIBILITY OF THE CONTRACTOR TO LOCATE, OR HAVE LOCATED BY THE APPROPRIATE COMPANIES, ALL UTILITIES PRIOR TO BEGINNING CONSTRUCTION.
- CALL UNDERGROUND LOCATE AT 1-800-424-5555 A MINIMUM OF 48 HOURS PRIOR TO ANY EXCAVATIONS.
- WATER PIPE SHALL BE 8" DUCTILE IRON PIPE STANDARD THICKNESS CLASS 52 CEMENT-LINED UNLESS OTHERWISE SPECIFIED AND SHALL CONFORM TO ANSI/AWWA C151/A21.51.

SEWER NOTES

- ALL WORKMANSHIP AND MATERIAL SHALL BE IN ACCORDANCE WITH CITY OF ARLINGTON PUBLICS WORKS CONSTRUCTION STANDARDS AND SPECIFICATIONS (PWCS), AUGUST 1997, AND THE MOST CURRENT COPY OF THE STATE OF WASHINGTON/APWA STANDARD SPECIFICATIONS FOR ROAD, BRIDGE, AND MUNICIPAL CONSTRUCTION.
- A PRECONSTRUCTION MEETING SHALL BE HELD WITH THE CITY PRIOR TO THE START OF CONSTRUCTION.
- IT SHALL BE THE RESPONSIBILITY OF THE CONTRACTOR TO LOCATE, OR HAVE LOCATED BY THE APPROPRIATE COMPANIES, ALL UTILITIES PRIOR TO BEGINNING CONSTRUCTION.
- CALL UNDERGROUND LOCATE AT 1-800-424-5555 A MINIMUM OF 48 HOURS PRIOR TO ANY EXCAVATIONS.
- SEWER PIPE SHALL BE PVC PIPE STANDARD AS SPECIFIED IN CITY OF ARLINGTON PWCS.
- CLEANOUTS SHALL BE INSTALLED IMMEDIATELY PRIOR TO ANY BUILDING CONNECTION.

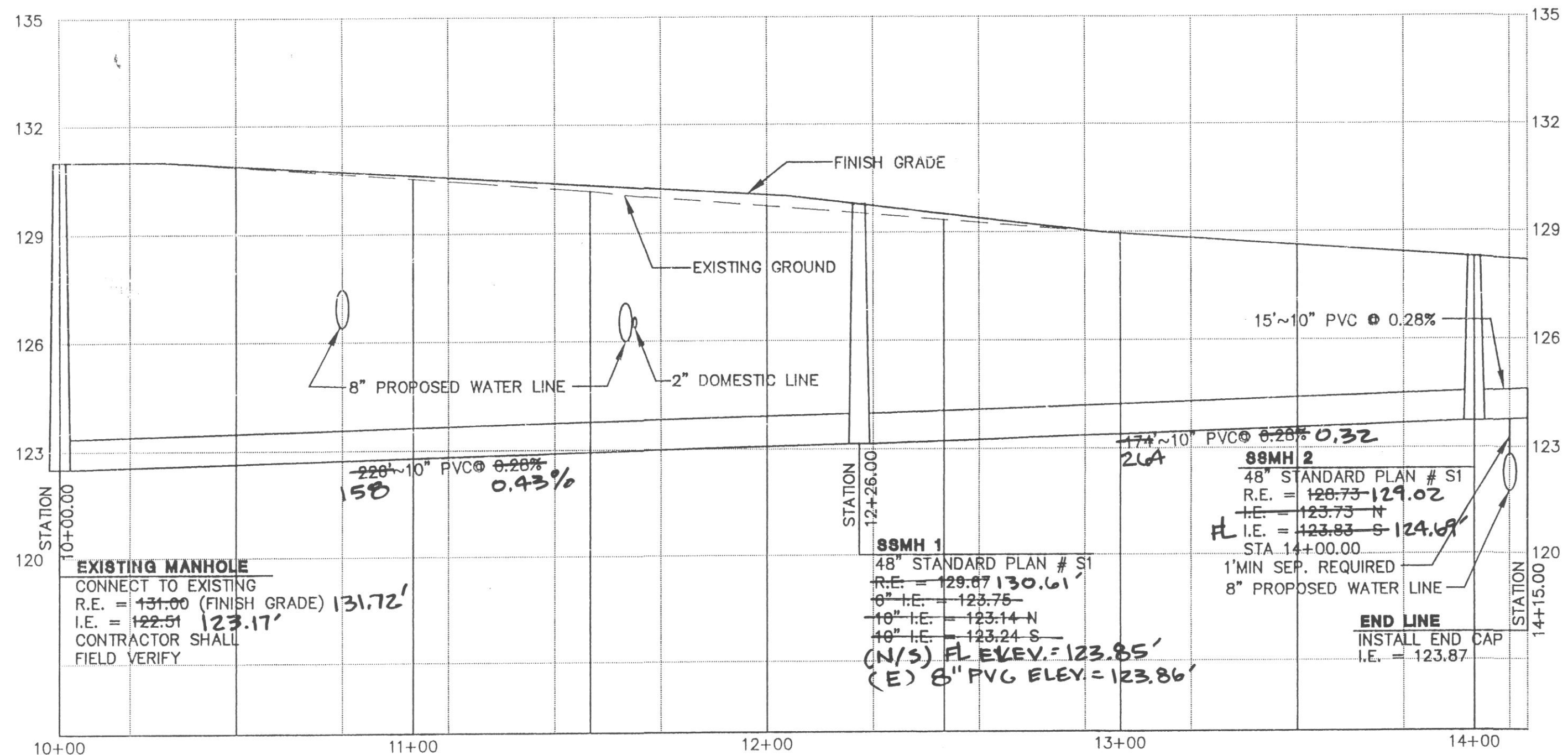
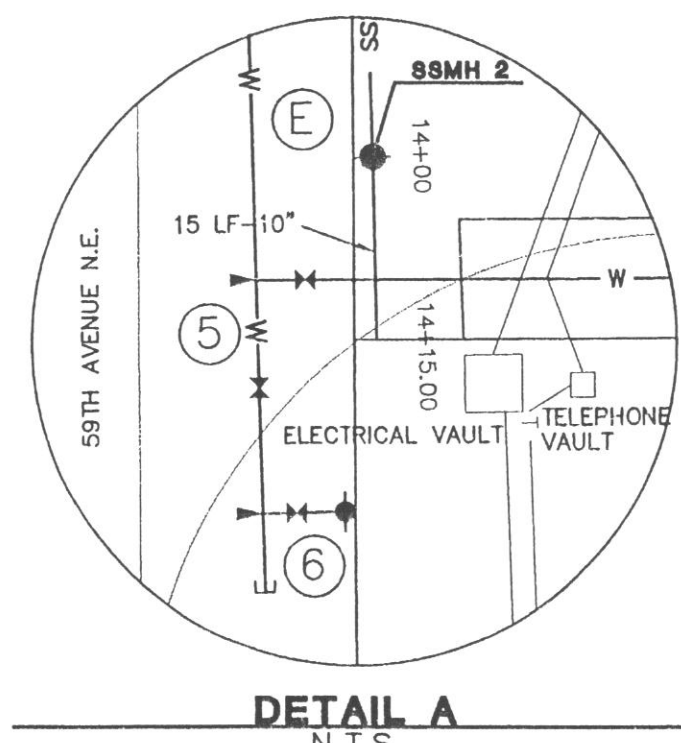
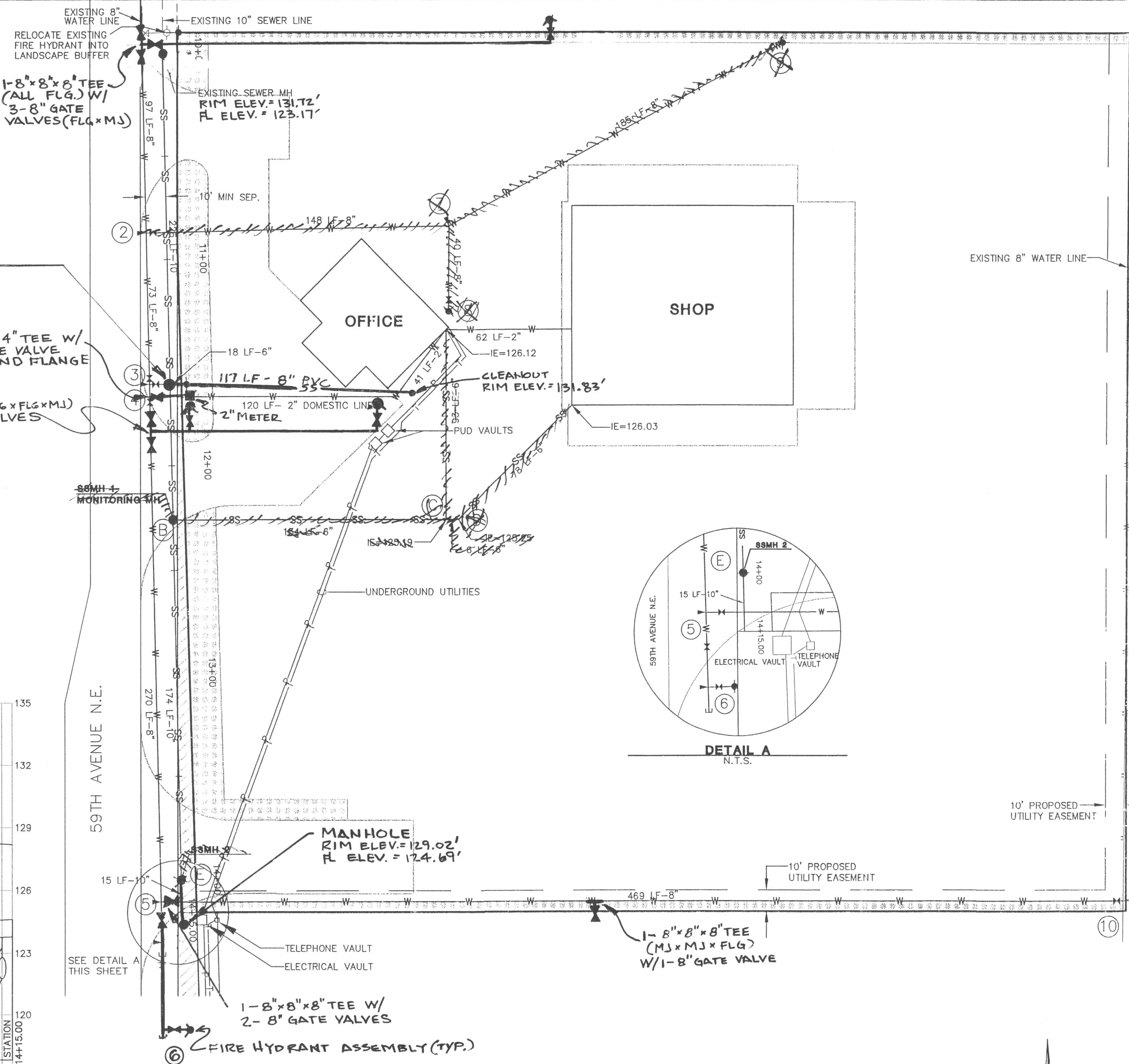
- ~~CONNECT TO EXISTING 8" WATER LINE AS SPECIFIED IN CITY OF ARLINGTON PWCS. INSTALL 8" GATE VALVE.~~
- ~~INSTALL 8" GATE VALVE, 8"x8"x4" TEE, 4" GATE VALVE, 4" BY 2" REDUCER, 2" DOMESTIC CONNECTION AND DCVA AS SHOWN AND BLOCKING, SEE STANDARD PLAN NUMBER W3, W10, W13 (PWCS).~~
- ~~INSTALL 8" GATE VALVE, 8"x8"x6" TEE, FIRE HYDRANT ASSEMBLY AND ONE SECTION OF PIPE AS SHOWN. SEE STANDARD PLAN NUMBER W1.~~
- ~~INSTALL 8"x8"x8" TEE AND TWO 8" GATE VALVES, BENDS AS REQUIRED AND BLOCKING AS SHOWN. SEE STANDARD PLAN NUMBER W3 FOR BLOCKING.~~
- INSTALL 8"x8"x8" TEE, FIRE HYDRANT ASSEMBLY, BLOCKING AND END CAP AS SHOWN, SEE STANDARD PLAN NUMBERS W1, W3
- INSTALL 8"x8"x8" TEE AND BENDS AS REQUIRED WITH BLOCKING. SEE STANDARD PLAN NUMBER W3
- INSTALL FIRE HYDRANT ASSEMBLY. SEE STANDARD PLAN NUMBER W1
- INSTALL FIRE HYDRANT ASSEMBLY. SEE STANDARD PLAN NUMBER W1
- CONNECT TO EXISTING LINE PER CITY OF ARLINGTON PWCS. INSTALL 8" GATE VALVE, 8" TEE THAT WAS CUT IN WITH 1-8" GATE VALVE ON THE WEST LEG. 2- COMPRESSION COUPLINGS W/ 2 STUBS OF PIPE.

- CONNECT TO EXISTING SEWER MH WITH 10" PVC PIPE PER CITY OF ARLINGTON PWCS SEE STANDARD PLAN NUMBER S12, RELOCATE RIM ELEVATION TO MATCH FINISH GRADE.
- INSTALL MONITORING MANHOLE IN LINE, W LOCKING COVER, SEE STANDARD PLAN S1, S3, S12
- 6" CLEANOUT AND 6"x6"x6" WYE CONNECTION.
- ONE 6" 45 DEGREE BEND WITH CLEANOUT SEE STANDARD PLAN NUMBER S11
- MANHOLE AND LOCKING COVER, RIM TO BE FLUSH WITH FINISH GRADE. SUFFICIENT STUB LINE TO EXTEND PAST PROPOSED ASPHALT DRIVEWAY 5 FEET, SEE STANDARD PLAN NUMBERS S1, S3, S12

MONITORING MANHOLE
RIM ELEV. = 130.61'
(N/S) FL ELEV. = 123.85'
(E) 8" PVC ELEV. = 123.86'

1-8"x8"x4" TEE W/
1-4" GATE VALVE
1-2" BLIND FLANGE

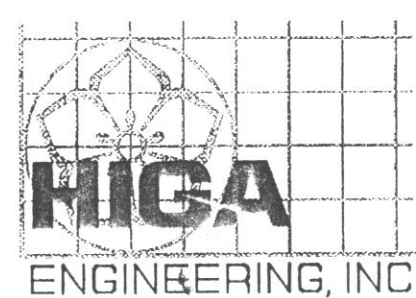
1-8"x8"x8" TEE (FLG x FLG x MJ)
W/ 2-8" GATE VALVES



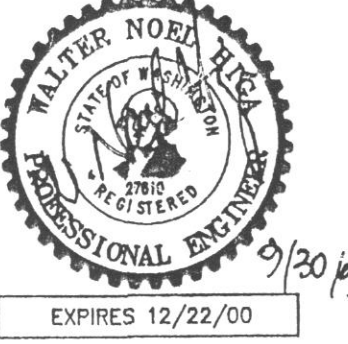
* ASBUILT SURVEY DONE BY CASCADE SURVEYING & ENGINEERING, INC. ON 08/21/2001.

P.U.D. NOTES

ELECTRICAL AND TELEPHONE PLANS SHOWN ARE APPROXIMATE LOCATIONS. PUD SHALL INSTALL PHONE AND POWER PER PUD STANDARDS. THIS PLAN ONLY SUGGESTS PUD VAULT LOCATIONS.



1721 Hewitt Avenue, Suite 401
Everett, WA 98201
(425) 252-2826 fax: 252-9551



CITY OF ARLINGTON
DEPARTMENT OF PUBLIC WORKS
APPROVED FOR CONSTRUCTION
BY: _____
DATE: _____

DATE	REVISIONS	BY:	PLAN DATE:
8/10/99	PER CITY COMMENTS	IAN	06/11/99
8/21/01	ADDED ASBUILT INFO	TAA	
10/10/01	REVISED PER CITY COMMENTS	TAA	
10/17/01	REVISED PER CITY COMMENTS	TAA	

DESIGNED BY:	PLAN CHECK BY:	1ST SUBMITTAL:	2ND SUBMITTAL:	3RD SUBMITTAL:
IAN	WNH	6/15/99	8/25/99	9/10/99

ASBUILT DRAWING

CONSTRUCTION PLANS
SMOKEY POINT DISTRIBUTING, INC.
BUILDING PERMIT
UTILITIES AND PROFILES

JOB NO. 1406C
4
5

8/10/99 FILE: SPOC4.DWG
#14514