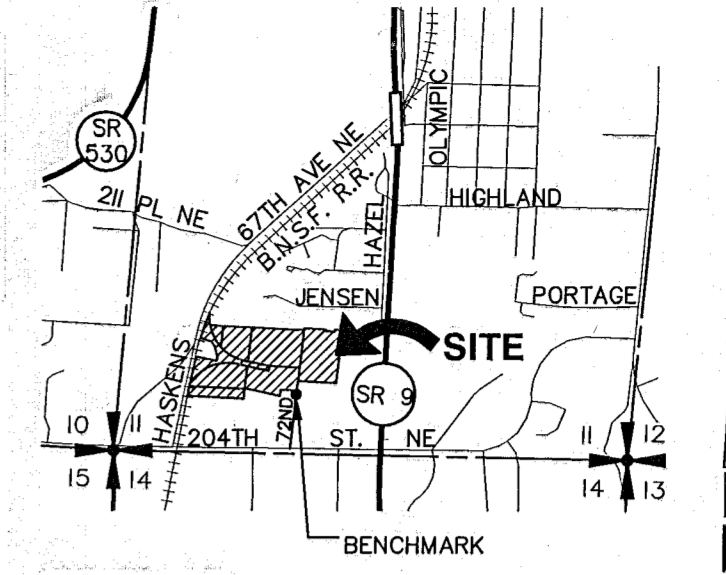
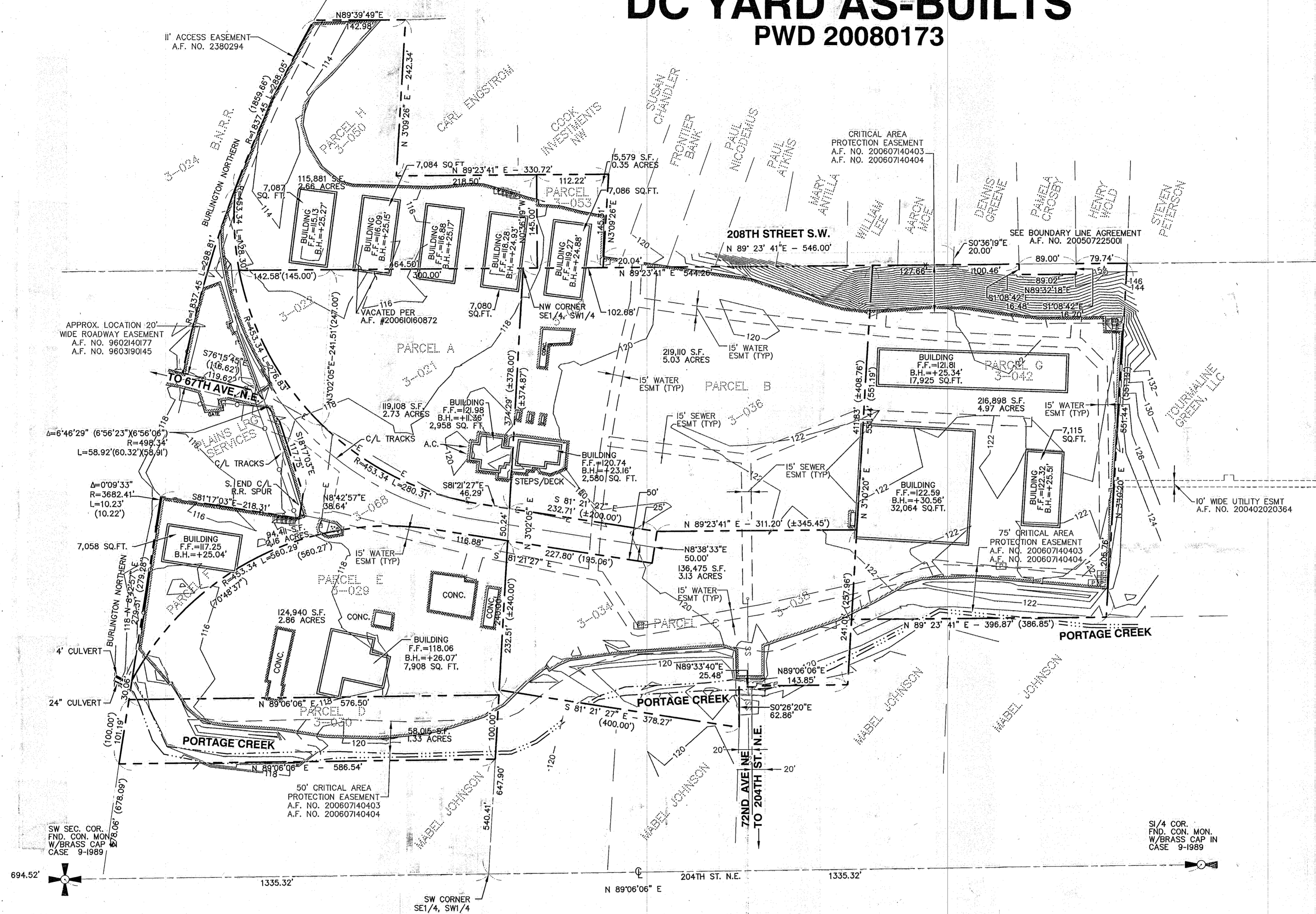


# DC YARD AS-BUILTS

## PWD 20080173

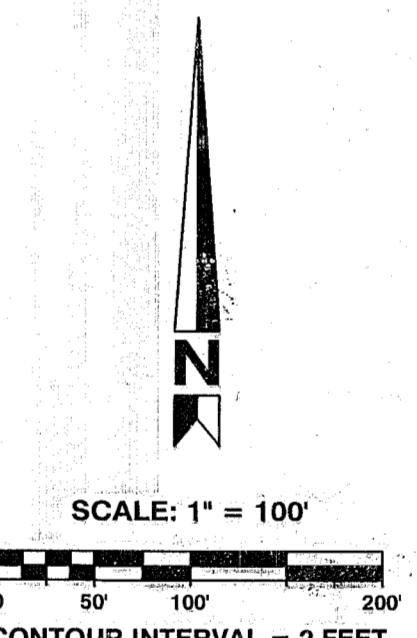


VICINITY MAP  
SCALE 1"=2000'

**APPLICANT/OWNER**  
MIKE COOK  
COOK INVESTMENTS NW IND PARK, LLC  
2015 STATE ROUTE 9 NE  
ARLINGTON, WA 98223

**PROJECT SURVEYOR**  
CASCADE SURVEYING &  
ENGINEERING, INC.  
P.O. BOX 328  
ARLINGTON, WASHINGTON 98223  
(360) 435-5551


**TAX ACCOUNT NUMBERS**  
3105100302200 3105100303800  
3105100302100 3105100303400  
3105100303700 3105100302900  
3105100303600 3105100306800  
3105100304200 3105100306100



**ENGINEER'S AS-BUILT NOTE**  
THE AS-BUILT DATA SHOWN ON THIS PLAN WAS PROVIDED BY CASCADE SURVEYING (360) 435-5551, ARLINGTON INSPECTION FIELD NOTES AND THE PROPERTY OWNER. HBA DESIGN GROUP STAFF WERE NOT ON-SITE DURING CONSTRUCTION AND HAVE NOT SURVEYED THE IMPROVEMENTS.

**CITY OF ARLINGTON**  
**AS-BUILT CONSTRUCTION DRAWING REVIEW ACKNOWLEDGEMENT**

THIS AS-BUILT PLAN SHEET HAS BEEN REVIEWED AND ACCEPTED AS A RECORD DRAWING. THE LICENSED DESIGN ENGINEER WHOSE STAMP AND SIGNATURE APPEAR ON THIS SHEET ASSUMES FULL AND COMPLETE RESPONSIBILITY FOR THE ACCURACY THEREIN.

BY:   
CITY ENGINEER

DATE: 01, 06, 2009

ARLINGTON FILE #PWD 20080173

**SITE PLAN**  
SCALE: 1"=100'

**UTILITY EASEMENTS**  
THESE UTILITY EASEMENTS HAVE BEEN RESERVED FOR AND GRANTED TO ALL UTILITIES SERVING THE SUBJECT PROPERTY AND THEIR RESPECTIVE SUCCESSORS AND ASSIGNS, UNDER AND UPON THE FRONT TEN FEET PARALLEL WITH AND ADJOINING THE STREET FRONTAGE OF ALL LOTS AND TRACTS IN WHICH TO INSTALL, CONSTRUCT, RENEW, OPERATE AND MAINTAIN UNDERGROUND CONDUITS, CABLES, PIPES, AND WIRES, TOGETHER WITH THE OTHER NECESSARY FACILITIES AND EQUIPMENT, FOR THE PURPOSE OF SERVING THIS AND OTHER PROPERTY WITH UTILITY SERVICE, TOGETHER WITH THE RIGHT TO ENTER UPON THE PROPERTY AT ALL TIMES FOR THE PURPOSES HEREIN STATED. ALL UTILITY LINES SHALL BE PLACED UNDERGROUND. THESE EASEMENTS ENTERED UPON FOR THESE PURPOSES SHALL BE RESTORED AS NEAR AS POSSIBLE TO THEIR ORIGINAL CONDITION. THESE EASEMENTS SHALL PRECLUDE GRADING OR ANY RECONTOURING OF THE LAND; PLACEMENT OF STRUCTURES, WELLS, LEACH FIELDS, AND ANY OTHER THING, EXCEPT UTILITY FACILITIES.

**SHEET INDEX**

SHEET AB-1	SITE PLAN
SHEET AB-2	SEWER AS-BUILTS PLAN VIEW
SHEET AB-3	AS-BUILT SEWER PROFILES
SHEET AB-4	WATER AS-BUILTS
SHEET AB-5	DRAINAGE AS-BUILTS (WEST)
SHEET AB-6	DRAINAGE AS-BUILTS (EAST)

**VERTICAL DATUM:** NAVD 1988  
**BENCHMARK:** A ROCK SPIKE SET IN THE ASPHALT, 2 FEET WEST OF ASBUILT CENTERLINE AND 12.4 FEET SOUTH OF SOUTH EDGE OF BRIDGE.  
ELEVATION IS 123.25 FEET

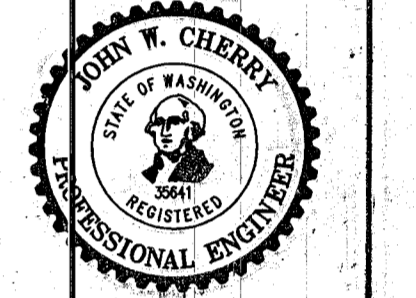


WASHINGTON  
425.252.2826 phone  
425.252.9551 fax

172 Hewitt Avenue  
Fourth Floor  
Everett, WA 98201

OREGON  
541.988.1862 phone  
541.988.1863 fax

150 North 7th Street  
Springfield, OR 97477

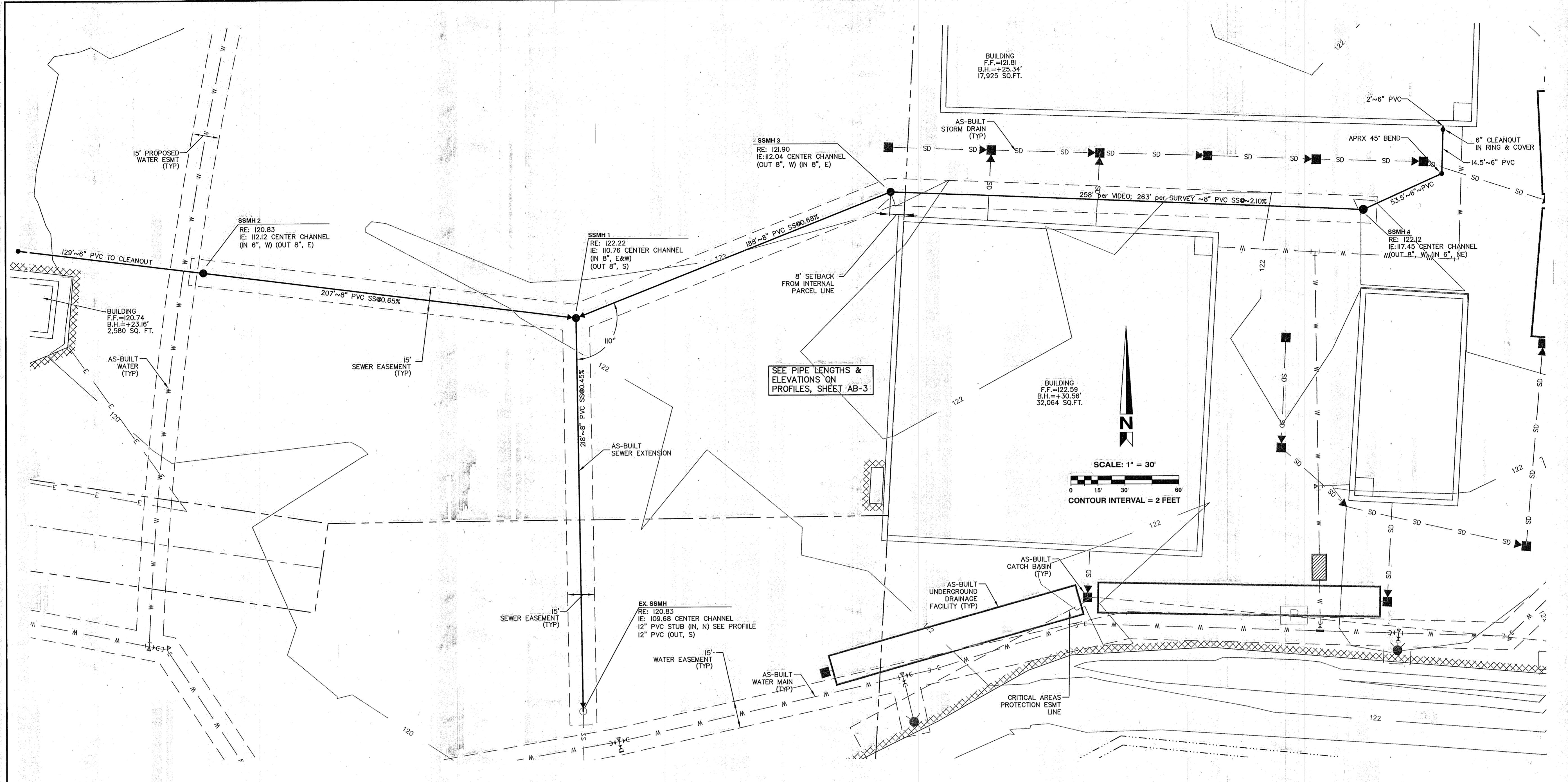


CALL TWO BUSINESS DAYS BEFORE YOU DIG 1-800-424-5555

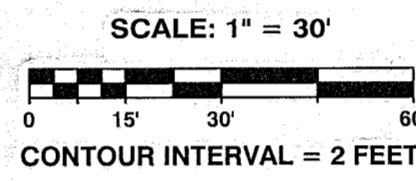
ISSUE DATE: 11/14/2008	DESIGNED BY: OTHERS	BY: JWC
APPROVAL BY: JWC	DATE: 11/14/08	REVISIONS: AS-BUILT
PLAN CHECK BY: JWC, MER	DATE: 12/28/08	AS-BUILT MODS PER: JWC
		CITY COMMENTS: MER

AS-BUILT PLANS  
OSO LUMBER  
DC YARD  
SITE PLAN

JOB NO. 1730  
AB-1



**AS-BUILT SEWER PLAN**  
SCALE: 1" = 30'



SEE PIPE LENGTHS & ELEVATIONS ON PROFILES, SHEET AB-3



**ENGINEER'S AS-BUILT NOTE**  
THE AS-BUILT DATA SHOWN ON THIS PLAN WAS PROVIDED BY CASCADE SURVEYING (360) 435-5551. HBA DESIGN GROUP STAFF WERE NOT ON-SITE DURING CONSTRUCTION AND HAVE NOT SURVEYED THE IMPROVEMENTS.  
AS-BUILT PIPE LENGTHS MAY HAVE DISCREPANCIES BASED ON MULTIPLE SOURCES OF DATA TO INCLUDE ALTA SURVEY, VIDEO AND FIELD MEASURE.

**VERTICAL DATUM:** NAVD 1988  
**BENCHMARK:** A ROCK SPIKE SET IN THE ASPHALT, 2 FEET WEST OF AS-BUILT CENTERLINE AND 12.4 FEET SOUTH OF SOUTH EDGE OF BRIDGE.  
ELEVATION IS 123.25 FEET

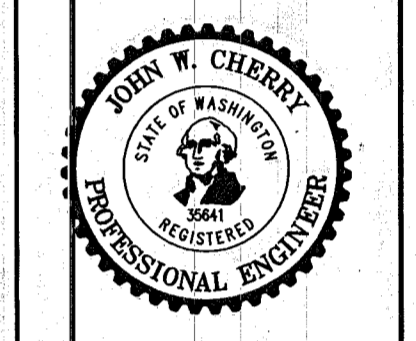
**CITY OF ARLINGTON**  
**AS-BUILT CONSTRUCTION DRAWING REVIEW ACKNOWLEDGEMENT**  
THIS AS-BUILT PLAN SHEET HAS BEEN REVIEWED AND ACCEPTED AS A RECORD DRAWING. THE LICENSED DESIGN ENGINEER WHOSE STAMP AND SIGNATURE APPEAR ON THIS SHEET ASSUMES FULL AND COMPLETE RESPONSIBILITY FOR THE ACCURACY THEREIN.  
BY: M. Ryan  
CITY ENGINEER  
DATE: 01, 06, 2009

ARLINGTON FILE #PWD 20080173



WASHINGTON  
425.252.2826 phone  
425.252.9551 fax  
1721 Hewitt Avenue  
Fourth Floor  
Everett, WA 98201

OREGON  
541.988.1862 phone  
541.988.1863 fax  
150 North 7th Street  
Springfield, OR 97477

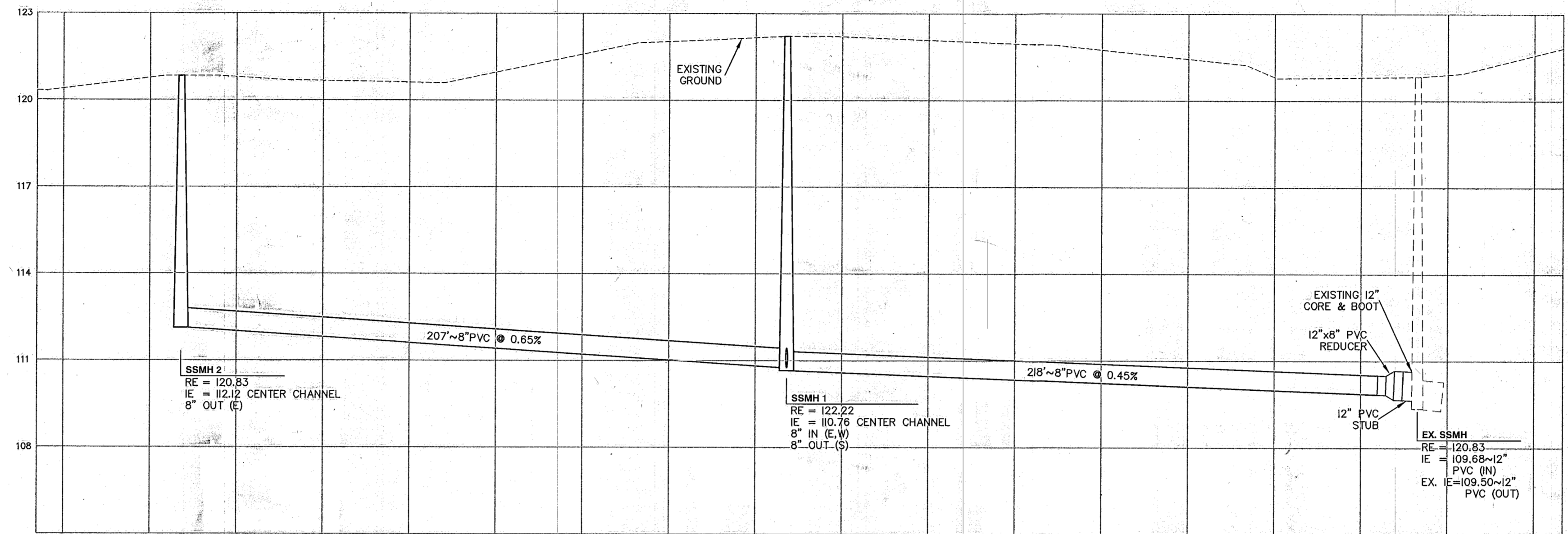


CALL TWO BUSINESS DAYS BEFORE YOU DIG 1-800-424-5555

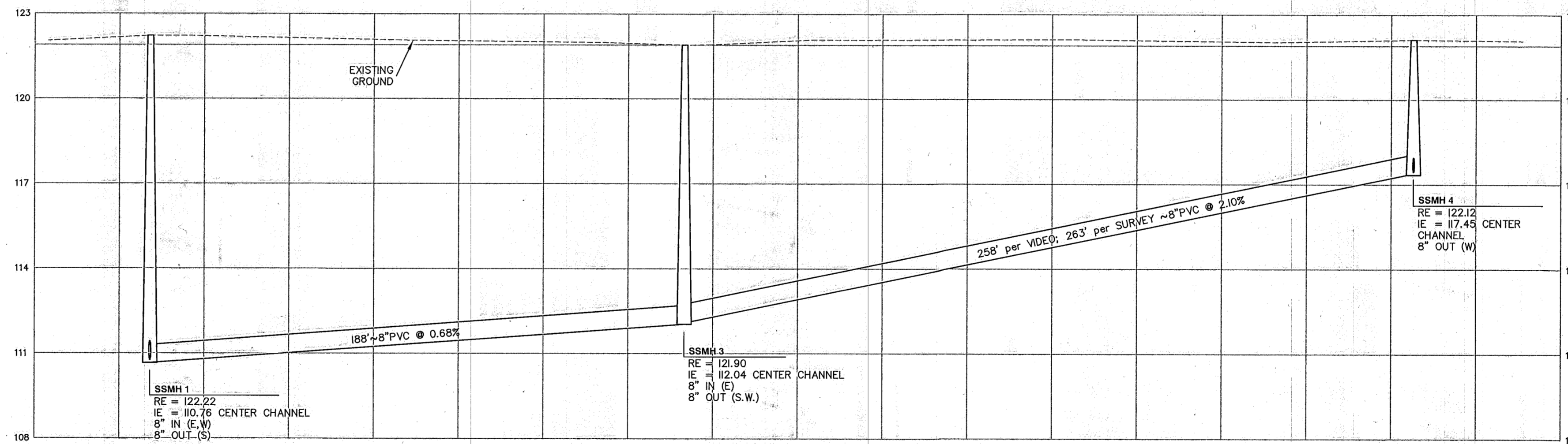
ISSUE DATE: 11/14/2008	REVISIONS	BY	JWC	MER
DRAWN BY: AUB, RJA	AS-BUILT			
PLAN CHECK BY: JWC, MER	AS-BUILT MODS PER CITY COMMENTS			
DATE: 11/14/08				

AS-BUILT PLANS  
OSO LUMBER  
DC YARD  
SEWER AS-BUILTS  
SEWER PLAN VIEW

JCB NO. 1730  
AB-2



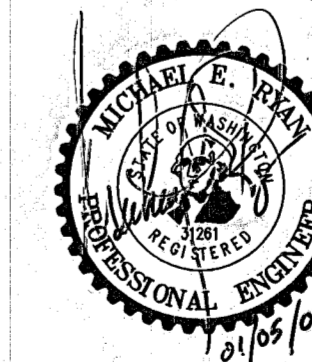
AS-BUILT SEWER PROFILE - SOUTH & WEST LEG  
SCALE: 1"=30'



AS-BUILT SEWER PROFILE - EAST LEG  
SCALE: 1"=30'

VERTICAL DATUM: NAVD 1988

BENCHMARK: A ROCK SPIKE SET IN THE ASPHALT, 2 FEET WEST OF AS-BUILT CENTERLINE AND 12.4 FEET SOUTH OF SOUTH EDGE OF BRIDGE.  
ELEVATION IS 123.25 FEET



**ENGINEER'S AS-BUILT NOTE**  
THE AS-BUILT DATA SHOWN ON THIS PLAN WAS PROVIDED BY CASCADE SURVEYING (360) 435-5551. HBA DESIGN GROUP STAFF WERE NOT ON-SITE DURING CONSTRUCTION AND HAVE NOT SURVEYED THE IMPROVEMENTS.  
AS-BUILT PIPE LENGTHS MAY HAVE DISCREPANCIES BASED ON MULTIPLE SOURCES OF DATA TO INCLUDE ALTA SURVEY, VIDEO AND FIELD MEASURE.

CITY OF ARLINGTON  
**AS-BUILT CONSTRUCTION DRAWING REVIEW ACKNOWLEDGEMENT**  
THIS AS-BUILT PLAN SHEET HAS BEEN REVIEWED AND ACCEPTED AS A RECORD DRAWING. THE LICENSED DESIGN ENGINEER WHOSE STAMP AND SIGNATURE APPEAR ON THIS SHEET ASSUMES FULL AND COMPLETE RESPONSIBILITY FOR THE ACCURACY THEREIN.  
BY: *[Signature]*  
CITY ENGINEER  
DATE: 01/06/2009

ARLINGTON FILE #PWD 20080173

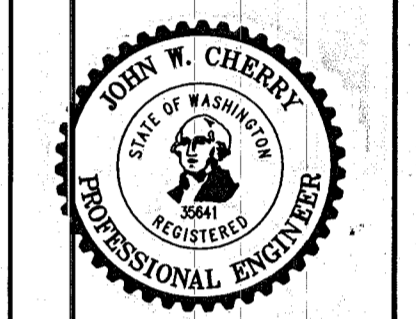


WASHINGTON  
425.252.2826 phone  
425.252.9551 fax

1721 Hewitt Avenue  
Fourth Floor  
Everett, WA 98201

OREGON  
541.988.1862 phone  
541.988.1863 fax

150 North 7th Street  
Springfield, OR 97477

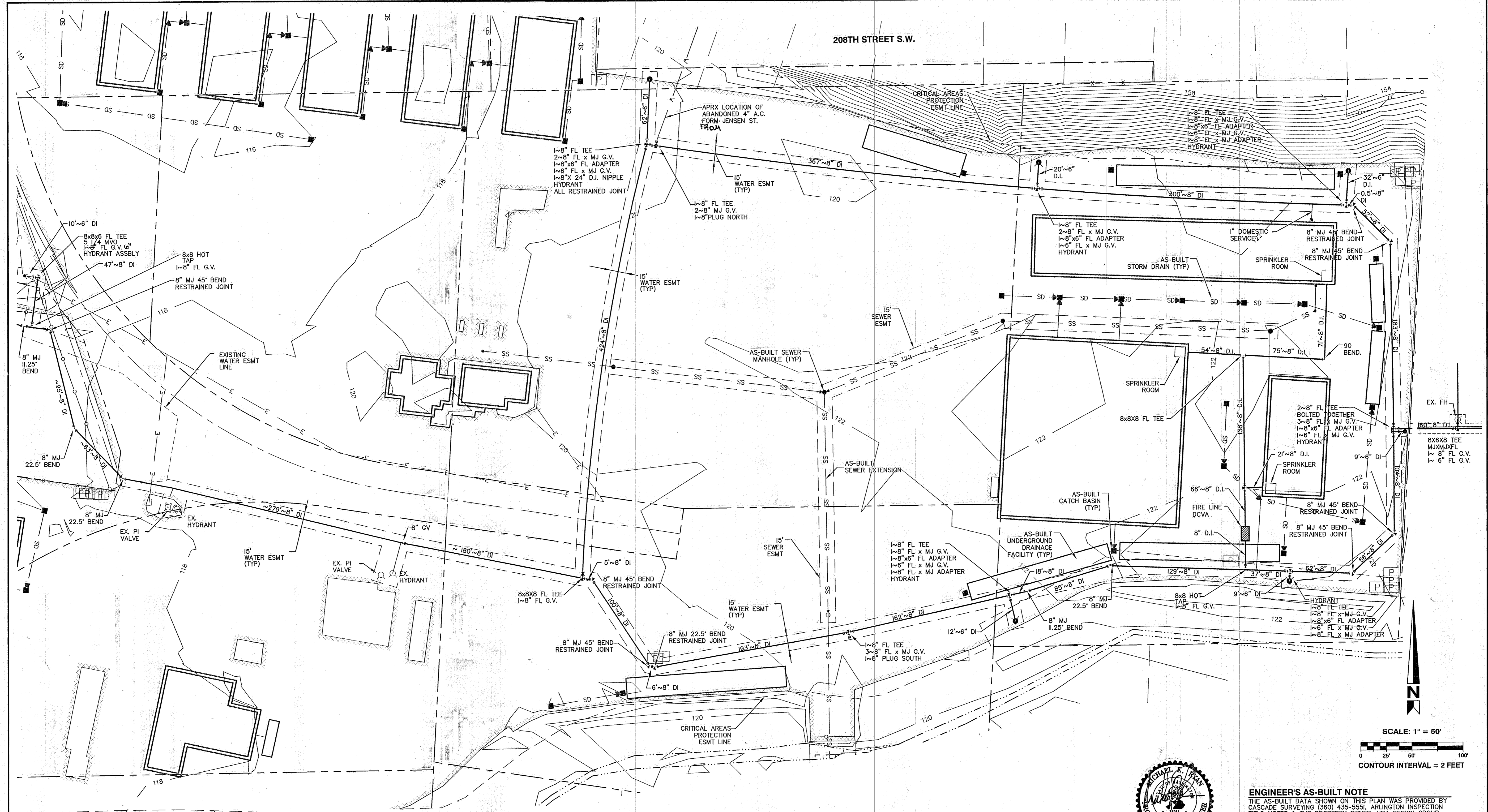


CALL TWO BUSINESS DAYS BEFORE YOU DIG 1-800-424-5555

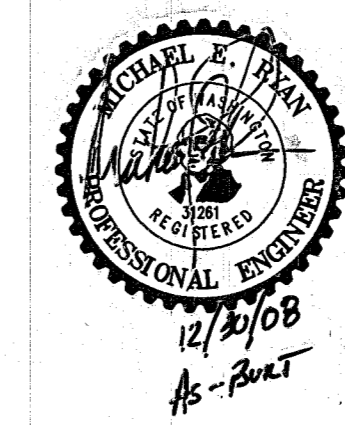
ISSUE DATE: 11/14/2008	DESIGNED BY: A.B. RLM	PLAN CHECK BY: JWC, MER
DATE: 11/14/08	REVISIONS	AS-BUILT MODS PER CITY COMMENTS
12/26/08	JWC	MER

AS-BUILT PLANS  
OSO LUMBER  
DC YARD  
AS-BUILT SEWER PROFILES

JOB NO. 1730  
AB-3



**VERTICAL DATUM:** NAVD 1988  
**BENCHMARK:** A ROCK SPIKE SET IN THE ASPHALT, 2 FEET WEST OF AS-BUILT CENTERLINE AND 12.4 FEET SOUTH OF SOUTH EDGE OF BRIDGE.  
 ELEVATION IS 123.25 FEET



**ENGINEER'S AS-BUILT NOTE**  
 THE AS-BUILT DATA SHOWN ON THIS PLAN WAS PROVIDED BY CASCADE SURVEYING (260) 435-5551, ARLINGTON INSPECTION FIELD NOTES & THE PROPERTY OWNER. HBA DESIGN GROUP STAFF WERE NOT ON-SITE DURING CONSTRUCTION AND HAVE NOT SURVEYED THE IMPROVEMENTS.

**CITY OF ARLINGTON**  
**AS-BUILT CONSTRUCTION DRAWING REVIEW ACKNOWLEDGEMENT**  
 THIS AS-BUILT PLAN SHEET HAS BEEN REVIEWED AND ACCEPTED AS A RECORD DRAWING. THE LICENSED DESIGN ENGINEER WHOSE STAMP AND SIGNATURE APPEAR ON THIS SHEET ASSUMES FULL AND COMPLETE RESPONSIBILITY FOR THE ACCURACY THEREIN.  
 BY: *[Signature]*  
 CITY ENGINEER  
 DATE: 01, 06, 2009

ARLINGTON FILE #PWD 20080173

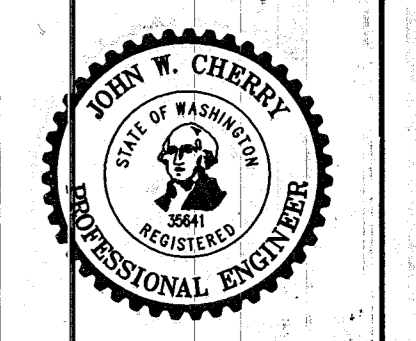


WASHINGTON  
 425.252.2826 phone  
 425.252.9551 fax

1721 Hewitt Avenue  
 Fourth Floor  
 Everett, WA 98201

OREGON  
 541.988.1862 phone  
 541.988.1863 fax

150 North 7th Street  
 Springfield, OR 97477

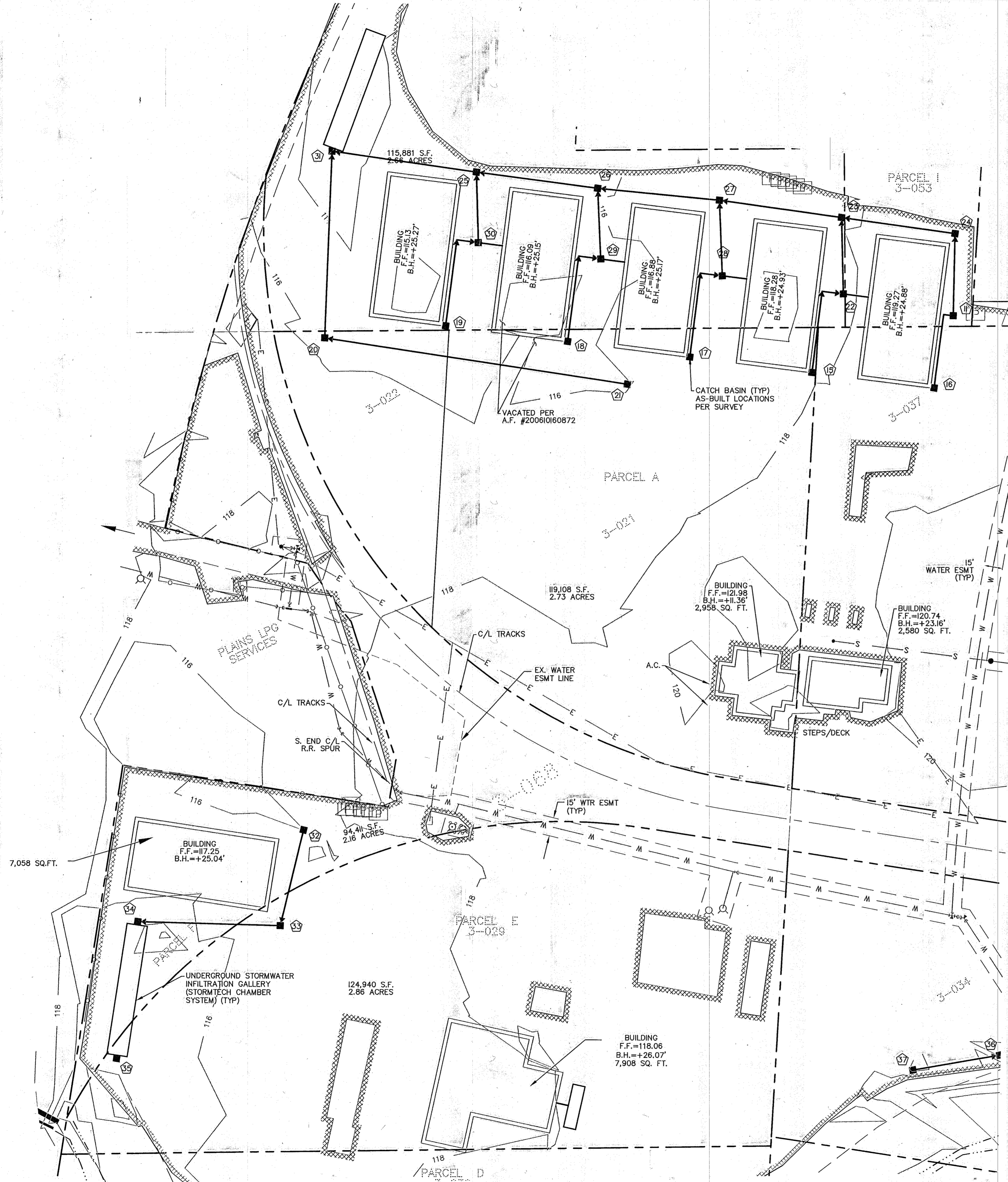


CALL TWO BUSINESS DAYS BEFORE YOU DIG 1-800-424-5555

DATE	REVISIONS	BY	JWC	MER
11/14/08	AS-BUILT	JWC		
12/26/08	AS-BUILT MODS PER CITY COMMENTS	JWC		

AS-BUILT PLANS  
**OSO LUMBER DC YARD**  
 WATER AS-BUILTS

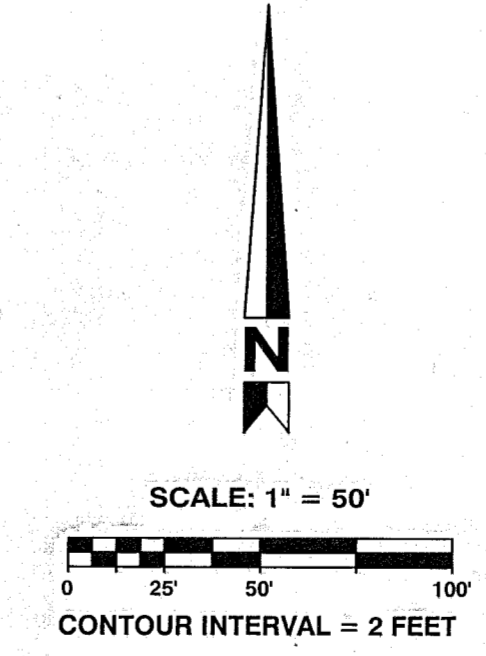
JOB NO. 1730  
**AB-4**



AS-BUILT DRAINAGE WEST  
SCALE: 1"=50'

**INVERT NOTES**

- ① TOP CB GRATE=120.41  
INV. 12" N.E.=117.11
- ② TOP CB GRATE=121.86  
INV. 12" E.=117.04  
INV. 12" W.=117.04
- ③ TOP CB GRATE=121.40  
INV. 12" W.=117.67  
INV. 6" N.=118.69
- ④ TOP CB GRATE=121.69  
INV. 12" S.W.=117.51  
INV. 12" N.=117.55
- ⑤ TOP CB GRATE=121.71  
INV. 12" N.=117.12  
INV. 12" S.=117.42
- ⑥ TOP CB GRATE=120.77  
INV. 12" N.=116.75  
INV. 12" S.=116.42  
INV. 12" N.W.=117.37
- ⑦ TOP CB GRATE=120.75  
INV. 12" S.=117.93
- ⑧ TOP CB GRATE=121.04  
INV. 4" S.=117.89  
INV. 12" S.W.=117.60
- ⑨ TOP CB GRATE=120.99  
INV. 4" S.=117.89  
INV. 12" E.=117.60
- ⑩ TOP CB GRATE=120.42  
INV. 12" N.W.=117.48
- ⑪ TOP CB GRATE=118.36  
INV. 12" N.=116.51
- ⑫ NOT USED
- ⑬ NOT USED
- ⑭ NOT USED
- ⑮ TOP YARD DRAIN=117.59  
INV. 4" W.=116.89
- ⑯ TOP YARD DRAIN=118.57  
INV. 4" W.=117.77
- ⑰ TOP YARD DRAIN=116.53  
INV. 4" W.=115.73
- ⑱ TOP YARD DRAIN=115.61  
INV. 4" W.=114.81
- ⑲ TOP YARD DRAIN=114.63  
INV. 4" W.=113.73
- ⑳ TOP CB GRATE=114.29  
INV. 12" E.=110.59  
INV. 12" N.=110.39
- ㉑ TOP CB GRATE=115.93  
INV. 12" W.=113.33
- ㉒ TOP CB GRATE=117.50  
INV. 4" E.=115.68  
INV. 12" N.W.=115.58  
INV. 4" W.=115.60
- ㉓ TOP CB GRATE=117.20  
INV. 12" S.E.=115.10  
INV. 12" E.=114.90  
INV. 12" W.=114.90
- ㉔ TOP CB GRATE=118.52  
INV. 12" S.=116.32  
INV. 12" W.=116.07
- ㉕ TOP CB GRATE=114.25  
INV. 12" S.=111.60  
INV. 12" E.=111.90  
INV. 12" W.=111.55
- ㉖ TOP CB GRATE=115.34  
INV. 12" W.=112.67  
INV. 12" E.=112.77  
INV. 12" S.=112.77
- ㉗ TOP CB GRATE=116.28  
INV. 12" S.=113.93  
INV. 12" E.=113.93  
INV. 12" W.=113.83
- ㉘ TOP CB GRATE=116.47  
INV. 12" N.=114.57  
INV. 4" W.=114.57  
INV. 4" E.=114.57
- ㉙ TOP CB GRATE=115.56  
INV. 12" N.=113.16  
INV. 4" E.=113.21  
INV. 4" W.=113.16
- ㉚ TOP CB GRATE=114.62  
INV. 12" N.=112.32  
INV. 4" E.=112.32  
INV. 4" W.=112.32
- ㉛ TOP CB GRATE=112.86  
INV. 18" S.=107.31  
INV. 18" N.=106.91  
INV. 12" E.=107.06
- ㉜ TOP CB GRATE=115.99  
INV. 4" S.W.=112.29  
INV. 12" S.=112.14
- ㉝ TOP CB SOLID LID=116.39  
INV. 12" W.=110.26  
INV. 12" N.=110.16
- ㉞ TOP CB GRATE=115.09  
INV. 12" E.=109.99  
INV. 6" N.=110.47  
INV. 12" S.=109.99
- ㉟ TOP CB GRATE=114.76  
INV. 12" N.=
- ㊱ TOP CB GRATE=117.52  
INV. 12" W.=113.57  
INV. 12" E.=113.58
- ㊲ TOP CB GRATE=117.39  
INV. 12" E.=113.39
- ㊳ TOP CB GRATE=121.47  
INV. 12" W.=118.74  
INV. 12" E.=118.67  
INV. 12" S.=119.16
- ㊴ TOP CB GRATE=121.61  
INV. 12" W.=118.88  
INV. 12" E.=118.80  
INV. 4" S.=119.30
- ㊵ TOP CB GRATE=121.31  
INV. 12" W.=118.40  
INV. 12" E.=118.20  
INV. 4" S.=119.14
- ㊶ TOP CB GRATE=121.47  
INV. 12" W.=119.47
- ㊷ TOP CB GRATE=121.55  
INV. 12" W.=118.88  
INV. 12" E.=118.80  
INV. 12" S.=119.30
- ㊸ TOP CB GRATE=121.31  
INV. 12" W.=118.40  
INV. 12" E.=118.20  
INV. 12" S.=119.14
- ㊹ TOP CB GRATE=121.50  
INV. 12" W.=118.20  
INV. 12" E.=118.12
- ㊺ TOP CB GRATE=121.55  
INV. 12" W.=117.94  
INV. 12" E.=117.88
- ㊻ TOP CB GRATE=121.48  
INV. 12" W.=117.58  
INV. 12" E.=117.45
- ㊼ TOP CB GRATE=121.69  
INV. 12" S.=119.69
- ㊽ TOP CB GRATE=122.08  
INV. 12" N.=118.98  
INV. 12" S.=118.98



VERTICAL DATUM: NAVD 1988  
BENCHMARK: A ROCK SPIKE SET IN THE ASPHALT, 2 FEET WEST OF AS-BUILT CENTERLINE AND 12.4 FEET SOUTH OF SOUTH EDGE OF BRIDGE.  
ELEVATION IS 123.25 FEET



**ENGINEER'S AS-BUILT NOTE**  
THE AS-BUILT DATA SHOWN ON THIS PLAN WAS PROVIDED BY CASCADE SURVEYING (350) 435-5555 AND BY THE PROPERTY OWNER. HBA DESIGN GROUP STAFF WERE NOT ON-SITE DURING CONSTRUCTION AND HAVE NOT SURVEYED THE IMPROVEMENTS.  
HBA DESIGN GROUP MAKES NO CERTIFICATION REGARDING THE CAPACITY OR FUNCTION OF THE UNDERGROUND DRAINAGE SYSTEM AS CONFIGURED.

CITY OF ARLINGTON  
**AS-BUILT CONSTRUCTION DRAWING REVIEW ACKNOWLEDGEMENT**  
THIS AS-BUILT PLAN SHEET HAS BEEN REVIEWED AND ACCEPTED AS A RECORD DRAWING. THE LICENSED DESIGN ENGINEER WHOSE STAMP AND SIGNATURE APPEAR ON THIS SHEET ASSUMES FULL AND COMPLETE RESPONSIBILITY FOR THE ACCURACY THEREIN.  
BY: *[Signature]*  
CITY ENGINEER  
DATE: 01, 06, 2009

ARLINGTON FILE #PWD 20080173

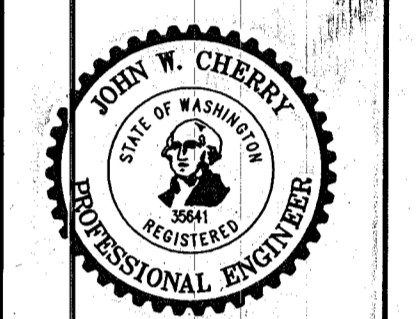


WASHINGTON  
425.252.2826 phone  
425.252.9551 fax

1721 Hewitt Avenue  
Fourth Floor  
Everett, WA 98201

ORIGON  
541.988.1862 phone  
541.988.1863 fax

150 North 7th Street  
Springfield, OR 97477

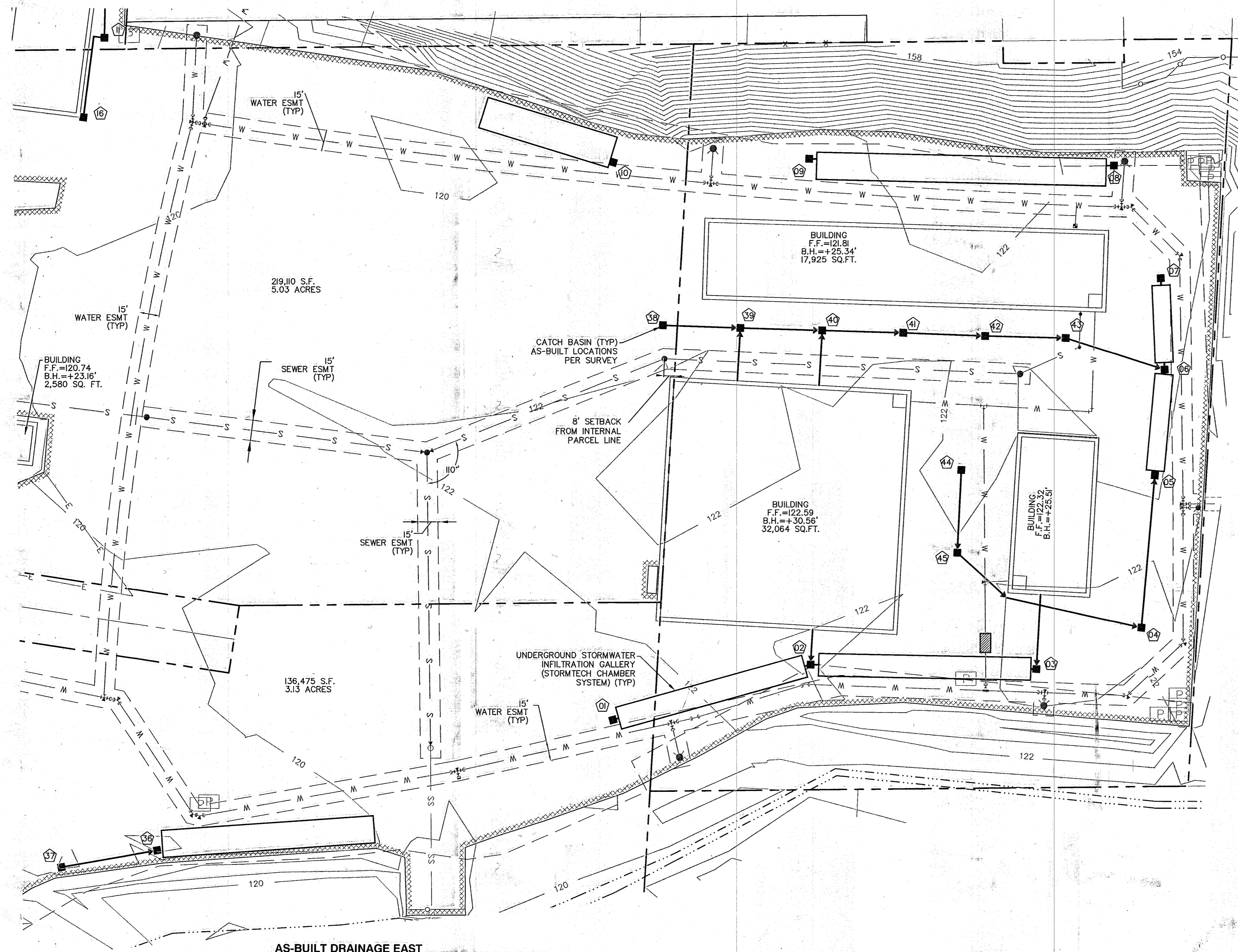


CALL TWO BUSINESS DAYS BEFORE YOU DIG 1-800-424-5555

DATE	REVISIONS	BY
11/14/08 <td>AS-BUILT <td>JWC </td></td>	AS-BUILT <td>JWC </td>	JWC
12/28/08 <td>AS-BUILT, NOTES PER CITY COMMENTS <td>MER </td></td>	AS-BUILT, NOTES PER CITY COMMENTS <td>MER </td>	MER

AS-BUILT PLANS  
OSO LUMBER  
DRAINAGE AS-BUILTS  
(WEST)

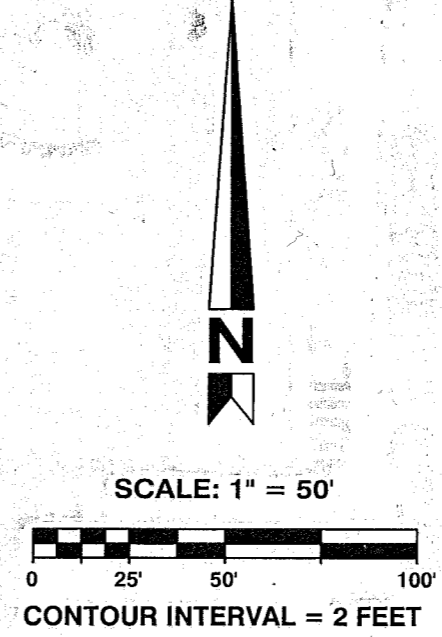
JOB NO. 1730  
AB-5



AS-BUILT DRAINAGE EAST  
SCALE: 1" = 50'

INVERT NOTES

- 01 TOP CB GRATE=120.41  
INV. 12" N.E.=117.11
- 02 TOP CB GRATE=121.86  
INV. 12" E.=117.04  
INV. 12" W.=117.04
- 03 TOP CB GRATE=121.40  
INV. 12" W.=117.67  
INV. 6" N.=118.89
- 04 TOP CB GRATE=121.69  
INV. 12" S.W.=117.51  
INV. 12" N.=117.55
- 05 TOP CB GRATE=121.71  
INV. 12" N.=117.12  
INV. 12" S.=117.42
- 06 TOP CB GRATE=120.77  
INV. 12" N.=116.75  
INV. 12" S.=116.42  
INV. 12" N.W.=117.37
- 07 TOP CB GRATE=120.75  
INV. 12" S.=117.93
- 08 TOP CB GRATE=121.04  
INV. 4" S.=117.89  
INV. 12" S.W.=117.60
- 09 TOP CB GRATE=120.99  
INV. 4" S.=117.89  
INV. 12" E.=117.80
- 10 TOP CB GRATE=120.42  
INV. 12" N.W.=117.48
- 11 TOP CB GRATE=118.36  
INV. 12" N.=116.51
- 12 NOT USED
- 13 NOT USED
- 14 NOT USED
- 15 TOP YARD DRAIN=117.59  
INV. 4" W.=116.89
- 16 TOP YARD DRAIN=118.57  
INV. 4" W.=117.77
- 17 TOP YARD DRAIN=116.53  
INV. 4" W.=115.73
- 18 TOP YARD DRAIN=115.61  
INV. 4" W.=114.81
- 19 TOP YARD DRAIN=114.63  
INV. 4" W.=113.73
- 20 TOP CB GRATE=114.29  
INV. 12" E.=110.59  
INV. 12" N.=110.39
- 21 TOP CB GRATE=115.93  
INV. 12" W.=113.33
- 22 TOP CB GRATE=117.50  
INV. 4" E.=115.88  
INV. 12" N.W.=115.58  
INV. 4" W.=115.60
- 23 TOP CB GRATE=117.20  
INV. 12" S.=116.32  
INV. 12" S.E.=115.10  
INV. 12" E.=114.90  
INV. 12" W.=114.90
- 24 TOP CB GRATE=118.52  
INV. 12" S.=116.32  
INV. 12" W.=116.07
- 25 TOP CB GRATE=114.25  
INV. 12" S.=111.80  
INV. 12" E.=111.90  
INV. 12" W.=111.55
- 26 TOP CB GRATE=115.34  
INV. 12" W.=112.67  
INV. 12" E.=112.77  
INV. 12" S.=112.77
- 27 TOP CB GRATE=116.28  
INV. 12" S.=113.93  
INV. 4" E.=113.93  
INV. 12" W.=113.83
- 28 TOP CB GRATE=116.47  
INV. 12" N.=114.57  
INV. 4" W.=114.57  
INV. 4" E.=114.57
- 29 TOP CB GRATE=115.56  
INV. 12" N.=113.16  
INV. 4" E.=113.21  
INV. 4" W.=113.16
- 30 TOP CB GRATE=114.62  
INV. 12" N.=112.32  
INV. 4" E.=112.32  
INV. 4" W.=112.32
- 31 TOP CB GRATE=112.86  
INV. 18" S.=107.31  
INV. 18" N.=106.91  
INV. 12" E.=107.06
- 32 TOP CB GRATE=115.99  
INV. 4" S.W.=112.29  
INV. 12" S.=112.14
- 33 TOP CB SOLID LID=116.39  
INV. 12" W.=110.26  
INV. 12" N.=110.16
- 34 TOP CB GRATE=115.09  
INV. 12" E.=109.99  
INV. 6" N.=110.47  
INV. 12" S.=109.99
- 35 TOP CB GRATE=114.76  
INV. 12" N.=
- 36 TOP CB GRATE=117.52  
INV. 12" W.=113.57  
INV. 12" E.=113.58
- 37 TOP CB GRATE=117.39  
INV. 12" E.=113.39
- 38 TOP CB GRATE=121.47  
INV. 12" W.=118.74  
INV. 12" E.=118.67  
INV. 12" S.=119.16
- 39 TOP CB GRATE=121.61  
INV. 12" W.=118.88  
INV. 12" E.=118.80  
INV. 4" S.=119.30
- 40 TOP CB GRATE=121.31  
INV. 12" W.=118.40  
INV. 12" E.=118.20  
INV. 4" S.=119.14
- 41 TOP CB GRATE=121.50  
INV. 12" W.=118.20  
INV. 12" E.=118.12
- 42 TOP CB GRATE=121.55  
INV. 12" W.=117.94  
INV. 12" E.=117.88
- 43 TOP CB GRATE=121.48  
INV. 12" W.=117.58  
INV. 12" E.=117.45
- 44 TOP CB GRATE=121.69  
INV. 12" S.=119.69
- 45 TOP CB GRATE=122.08  
INV. 12" N.=118.98  
INV. 12" S.=118.98



VERTICAL DATUM: NAVD 1988  
BENCHMARK: A ROCK SPIKE SET IN THE ASPHALT, 2 FEET WEST OF ASBUILT CENTERLINE AND 12.4 FEET SOUTH OF SOUTH EDGE OF BRIDGE.  
ELEVATION IS 123.25 FEET



**ENGINEER'S AS-BUILT NOTE**  
THE AS-BUILT DATA SHOWN ON THIS PLAN WAS PROVIDED BY CASCADE SURVEYING (360) 435-5551 AND BY THE PROPERTY OWNER. HBA DESIGN GROUP STAFF WERE NOT ON-SITE DURING CONSTRUCTION AND HAVE NOT SURVEYED THE IMPROVEMENTS. HBA DESIGN GROUP MAKES NO CERTIFICATION REGARDING THE CAPACITY OR FUNCTION OF THE UNDERGROUND DRAINAGE SYSTEM AS CONFIGURED.

CITY OF ARLINGTON  
**AS-BUILT CONSTRUCTION DRAWING REVIEW ACKNOWLEDGEMENT**  
THIS AS-BUILT PLAN SHEET HAS BEEN REVIEWED AND ACCEPTED AS A RECORD DRAWING. THE LICENSED DESIGN ENGINEER WHOSE STAMP AND SIGNATURE APPEAR ON THIS SHEET ASSUMES FULL AND COMPLETE RESPONSIBILITY FOR THE ACCURACY THEREIN.  
BY: *[Signature]*  
CITY ENGINEER  
DATE: 01, 06, 2009

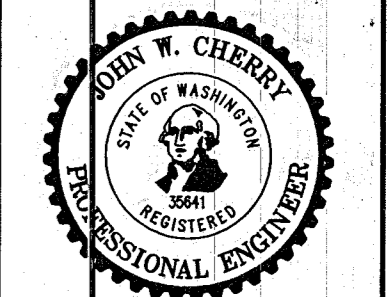


WASHINGTON  
425.252.2826 phone  
425.252.9551 fax

1721 Hewitt Avenue  
Fourth Floor  
Everett, WA 98201

OREGON  
541.988.1862 phone  
541.988.1863 fax

150 North 7th Street  
Springfield, OR 97477



CALL TWO BUSINESS DAYS BEFORE YOU DIG  
1-800-424-5555

DATE	REVISIONS	BY	JWC	MER
11/17/08	AS-BUILT			
12/26/08	AS-BUILT MOSS PER CITY COMMENTS			

AS-BUILT PLANS  
OSO LUMBER  
DRAINAGE AS-BUILTS (EAST)

JOB NO. 1730  
AB-6

ARLINGTON FILE #PWD 20080173