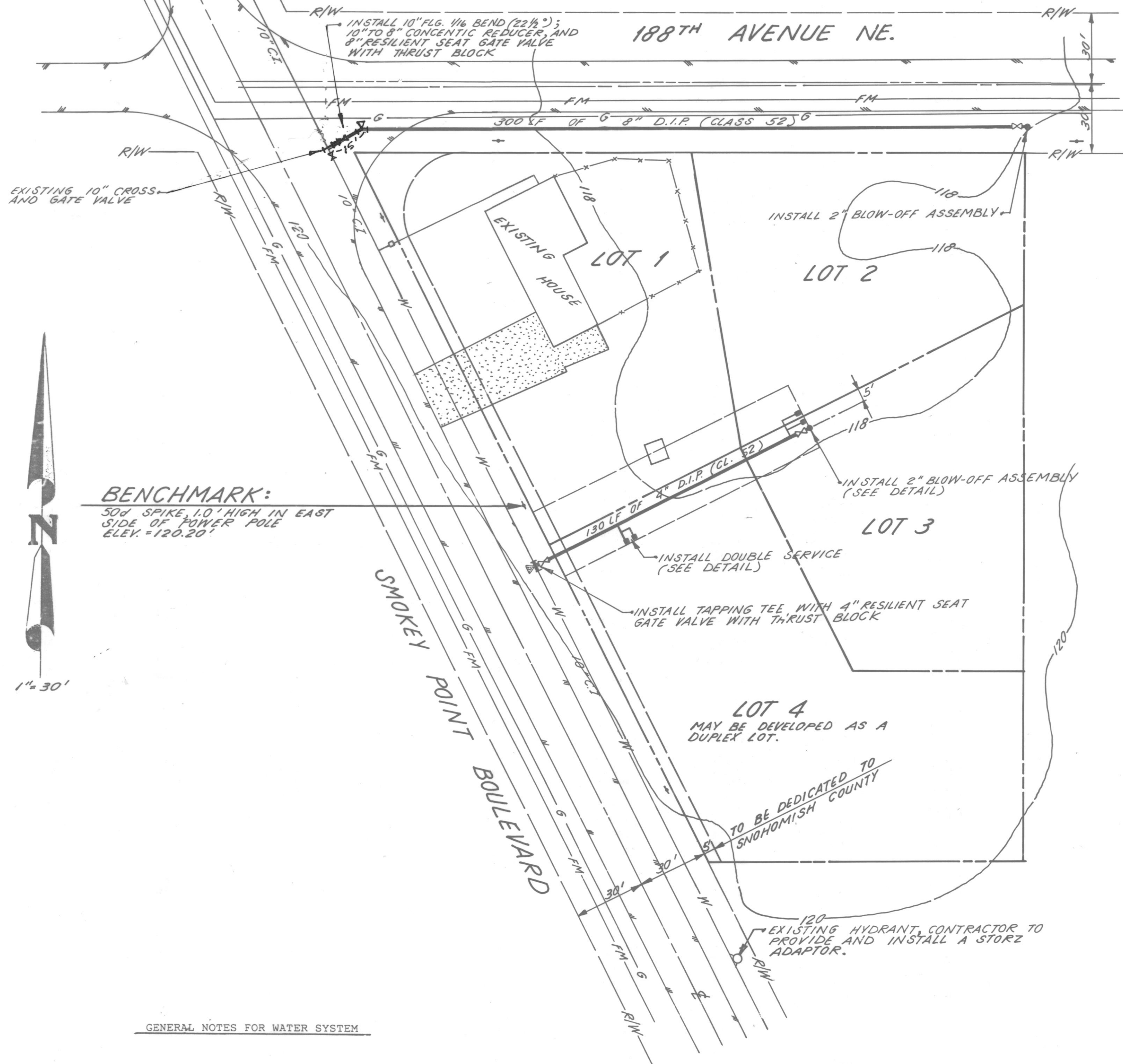


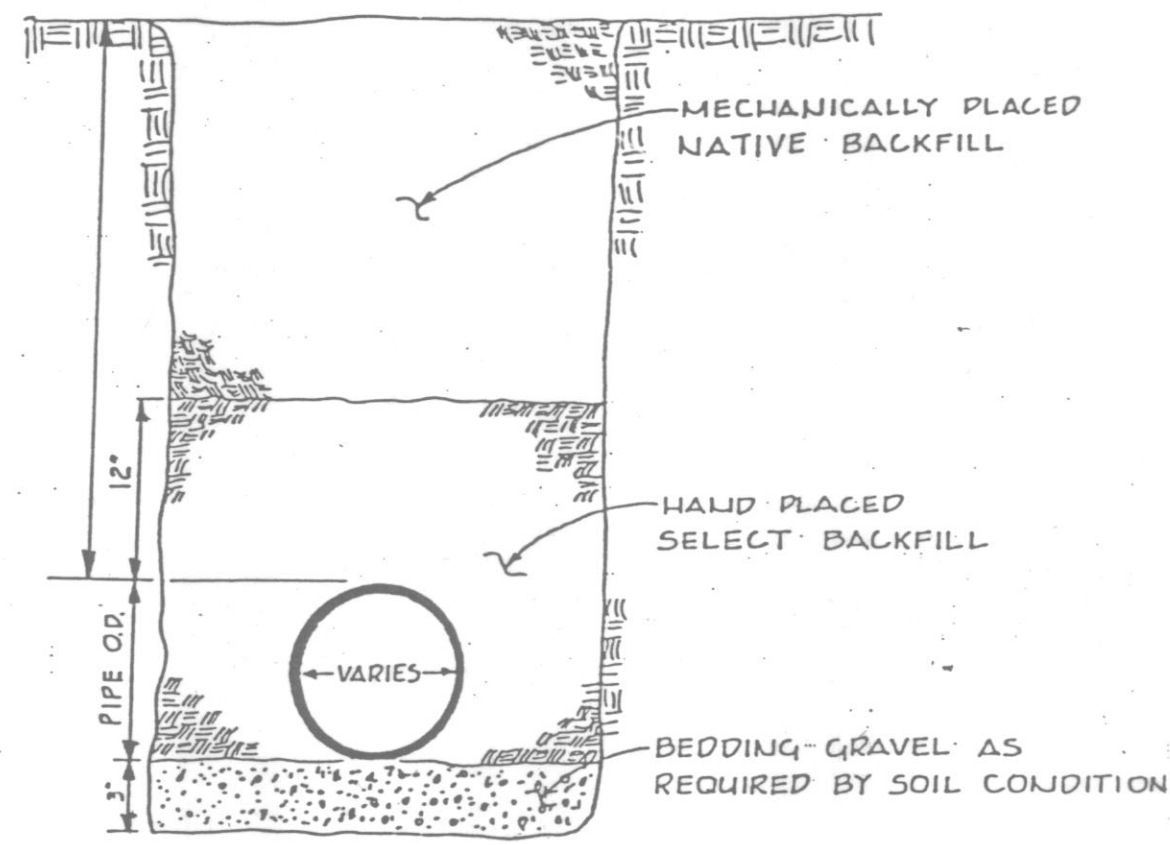
SEC. 20, T. 31 N., R. 5 E., W.M.



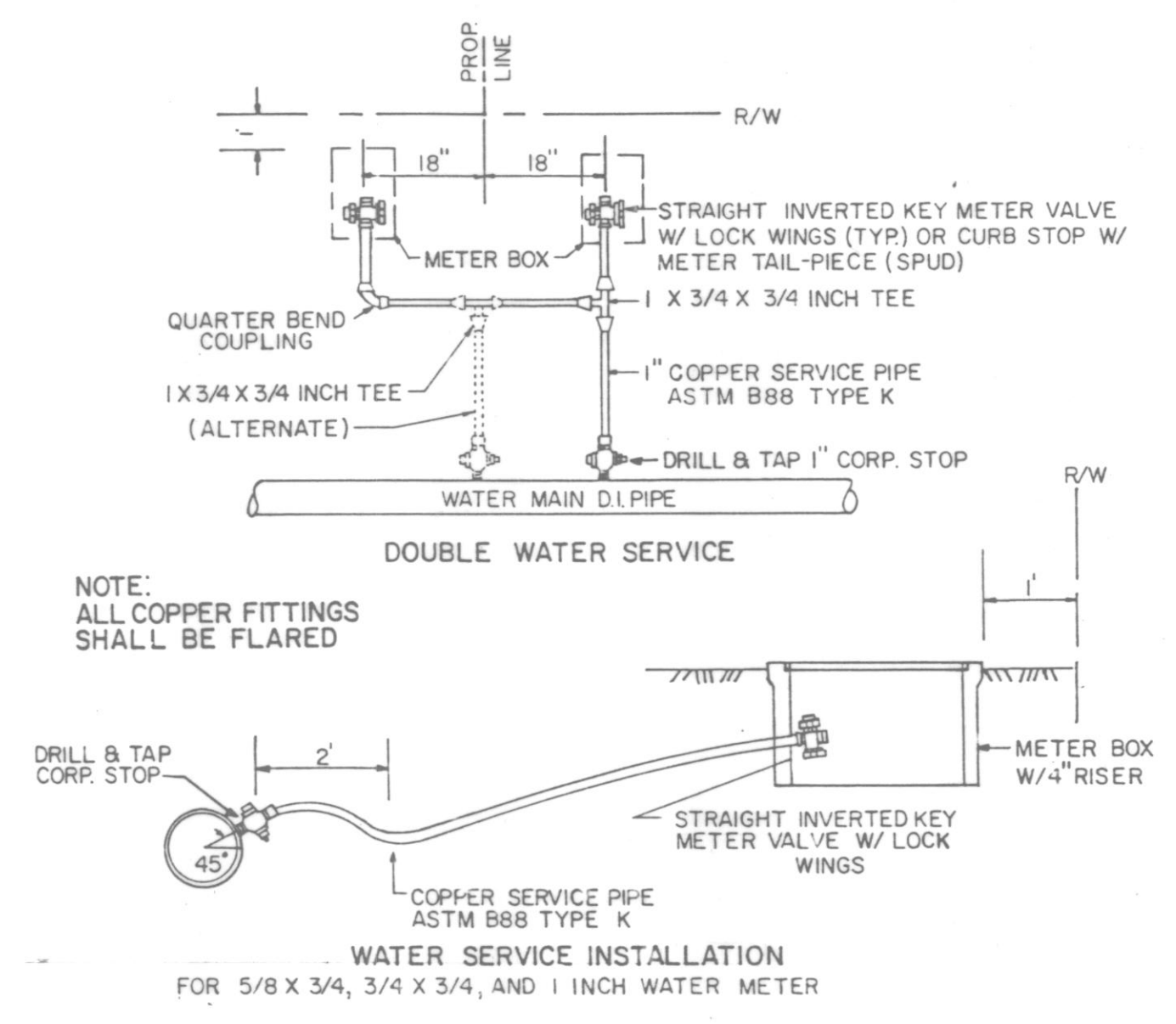
BENCHMARK:
50d SPIKE, 1.0' HIGH IN EAST SIDE OF POWER POLE
ELEV. = 120.20'

GENERAL NOTES FOR WATER SYSTEM

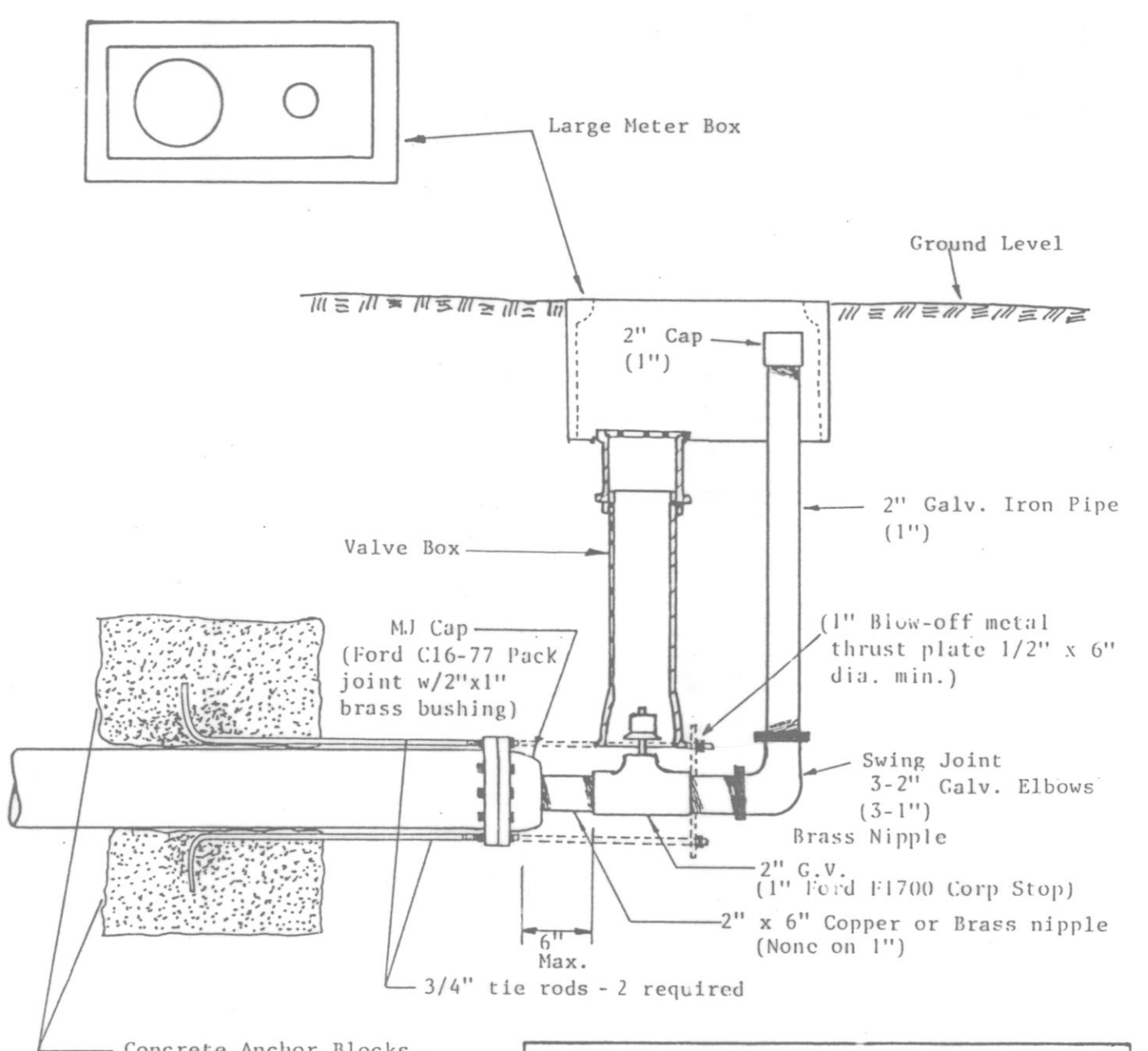
- All materials and workmanship shall conform to current A.P.W.A. Specifications when not covered by City of Marysville Standards and Specifications.
- Water mains shall be Class 52 Ductile Iron pipe and have a minimum of 36-inch cover.
- Water services to be Type K copper with Mueller type compression fittings or equivalent. Meter boxes shall be concrete with a four-inch (4") to six-inch (6") riser.
- The Marysville Water Department shall open or close all valves for construction, filling, testing and flushing water mains and submit the bacteriological water sample.
- Contractor shall call Utility Underground Locate (1-800-424-5555) 48-hours prior to construction.
- Pressure testing shall be done by the Contractor per Section 7.1.3 (11) of the A.P.W.A. Standard Specifications. Maximum pressure 200 psi.
- All fittings and material removed from existing mains shall be returned to the Utilities Department, 80 Columbia Avenue.
- The City of Marysville will obtain permits to work within the county right of way.
- Preconstruction meeting between City and Contractor to be held prior to the commencement of any site work.



TYPICAL TRENCH SECTION
N.T.S.



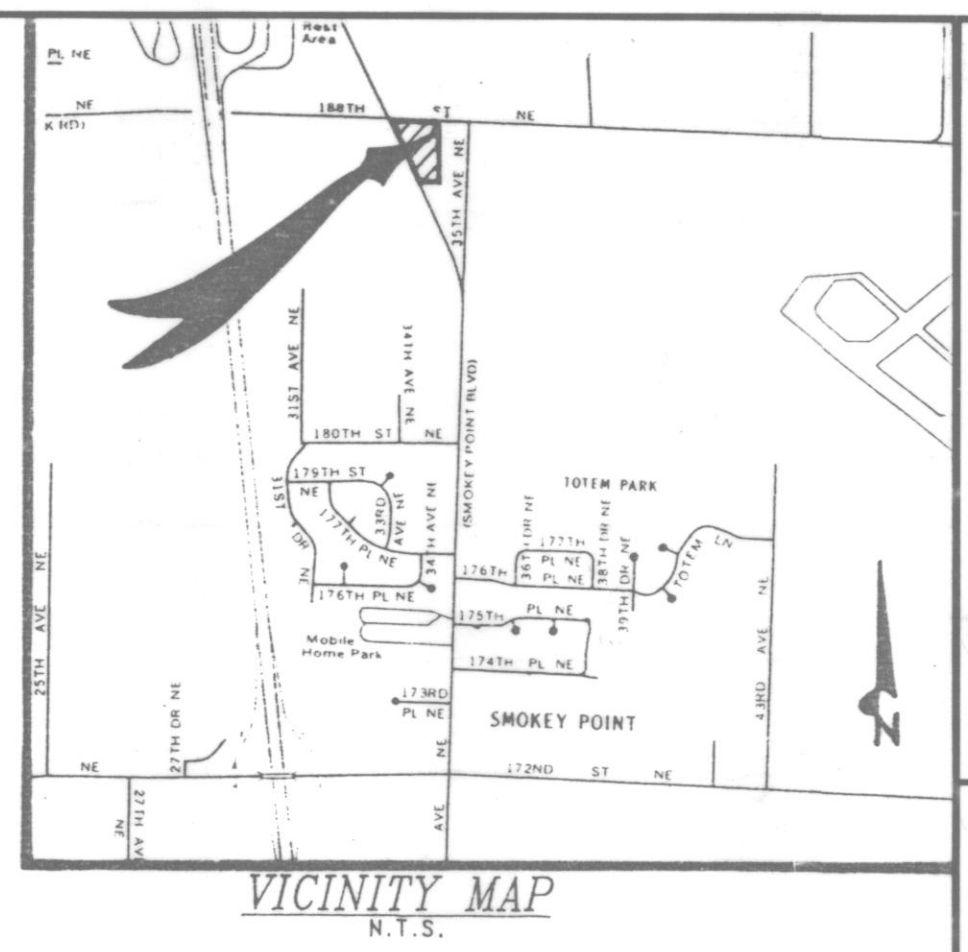
NOTE:
ALL COPPER FITTINGS
SHALL BE FLARED



CONCRETE ANCHOR BLOCKS		
Water Main Size	Minimum Size for Block	Blow-Off Size
2"	1 cubic ft.	1"
4"	8 cubic ft.	2"
6"	18 cubic ft.	2"
8"	33 cubic ft.	2"
12"	75 cubic ft.	2"
16"	125 cubic ft.	2"

NOTE: 1" DETAIL SHOWN IN PARENTHESES ()

2" BLOW-OFF ASSEMBLY



DEVELOPER:
MONICA BAKER
3423-188TH ST. NE.
ARLINGTON, WA. 98223
435-2943



"AS-BUILT"

by **Cascade Surveying & Engineering, Inc.**
435-5551
652-7572

for **WATER LINE EXTENSION**
MONICA BAKER

EXAMINED AND APPROVED FOR CONSTRUCTION
THIS 20th DAY OF JULY 1993.

Ken Winkler
CITY OF MARYSVILLE

#9749