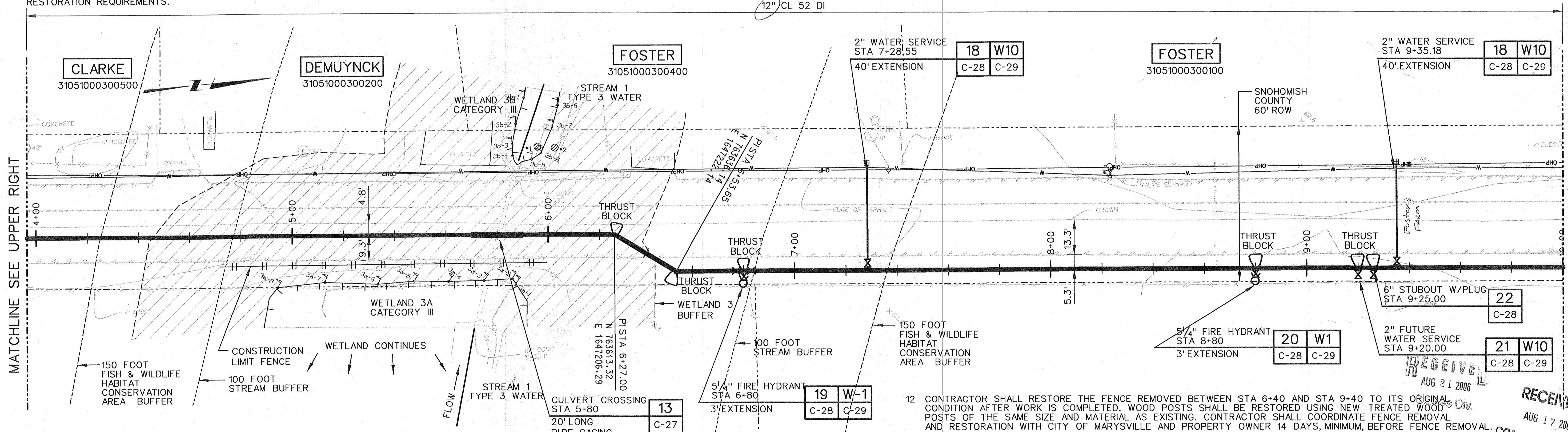
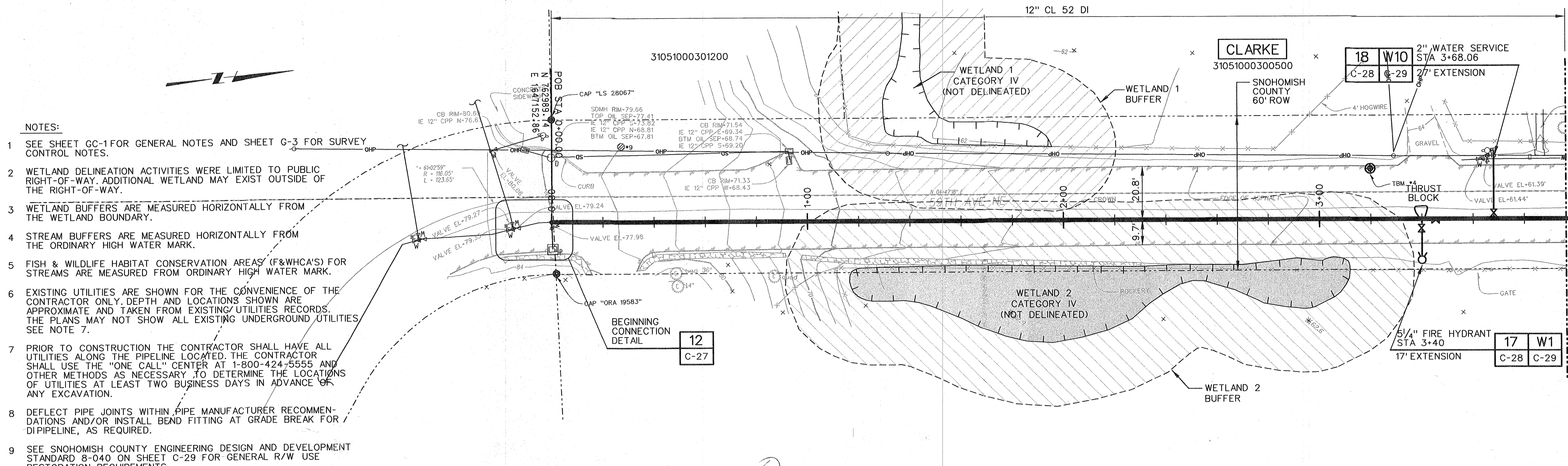


NOTES:

- SEE SHEET GC-1 FOR GENERAL NOTES AND SHEET G-3 FOR SURVEY CONTROL NOTES.
- WETLAND DELINEATION ACTIVITIES WERE LIMITED TO PUBLIC RIGHT-OF-WAY. ADDITIONAL WETLAND MAY EXIST OUTSIDE OF THE RIGHT-OF-WAY.
- WETLAND BUFFERS ARE MEASURED HORIZONTALLY FROM THE WETLAND BOUNDARY.
- STREAM BUFFERS ARE MEASURED HORIZONTALLY FROM THE ORDINARY HIGH WATER MARK.
- FISH & WILDLIFE HABITAT CONSERVATION AREAS (F&WHCA'S) FOR STREAMS ARE MEASURED FROM ORDINARY HIGH WATER MARK.
- EXISTING UTILITIES ARE SHOWN FOR THE CONVENIENCE OF THE CONTRACTOR ONLY. DEPTH AND LOCATIONS SHOWN ARE APPROXIMATE AND TAKEN FROM EXISTING UTILITIES RECORDS. THE PLANS MAY NOT SHOW ALL EXISTING UNDERGROUND UTILITIES. SEE NOTE 7.
- PRIOR TO CONSTRUCTION THE CONTRACTOR SHALL HAVE ALL UTILITIES ALONG THE PIPELINE LOCATED. THE CONTRACTOR SHALL USE THE "ONE CALL" CENTER AT 1-800-424-5555 AND OTHER METHODS AS NECESSARY TO DETERMINE THE LOCATIONS OF UTILITIES AT LEAST TWO BUSINESS DAYS IN ADVANCE OF ANY EXCAVATION.
- DEFLECT PIPE JOINTS WITHIN PIPE MANUFACTURER RECOMMENDATIONS AND/OR INSTALL BEND FITTING AT GRADE BREAK FOR DIPIPELINE, AS REQUIRED.
- SEE SNOHOMISH COUNTY ENGINEERING DESIGN AND DEVELOPMENT STANDARD 8-040 ON SHEET C-29 FOR GENERAL R/W USE RESTORATION REQUIREMENTS.



- CONTRACTOR SHALL MAINTAIN VEHICULAR ACCESS TO RESIDENCES DURING WORKING AND NON-WORKING HOURS. COORDINATE TEMPORARY CLOSURE OF DRIVEWAYS WITH PROPERTY OWNERS.
- TRENCHES SHALL BE EXCAVATED TO LINE AND DEPTH SO ALL PIPELINE HAS NOT LESS THAN THREE (3) FEET OR IN EXCESS OF FOUR (4) FEET OF COVER, MEASURED FROM THE TOP OF PIPE TO THE APPROVED FINISH GRADE, UNLESS SHOWN OTHERWISE. SEE DETAIL 10/GC-3 FOR ADDITIONAL INFORMATION.

- CONTRACTOR SHALL RESTORE THE FENCE REMOVED BETWEEN STA 6+40 AND STA 9+40 TO ITS ORIGINAL CONDITION AFTER WORK IS COMPLETED. WOOD POSTS SHALL BE RESTORED USING NEW TREATED WOOD POSTS OF THE SAME SIZE AND MATERIAL AS EXISTING. CONTRACTOR SHALL COORDINATE FENCE REMOVAL AND RESTORATION WITH CITY OF MARYSVILLE AND PROPERTY OWNER 14 DAYS, MINIMUM, BEFORE FENCE REMOVAL.
- TEMPORARY SILT FENCE AND OTHER TEMPORARY EROSION AND SEDIMENTATION CONTROL MEASURES SHALL BE UTILIZED BETWEEN STA 1+00 AND STA 7+00 TO MINIMIZE THE IMPACT OF CONSTRUCTION ACTIVITIES ON STREAMS AND WETLANDS. SEE SHEET GC-5 FOR ADDITIONAL REQUIREMENTS.
- THE CONTRACTOR SHALL INSTALL THRUST BLOCKS IN ACCORDANCE WITH DETAIL C-605/GC-3 AT STA 0+00, STA 3+40, STA 6+27.00, STA 6+53.65, STA 6+80, STA 7+28.55, STA 8+80, STA 9+20, STA 9+25, AND STA 9+35.18.

RECEIVED
AUG 21 2006
RECEIVED
AUG 17 2006
COA Engineering Div.

MATCHLINE SEE LOWER LEFT

MATCHLINE SEE UPPER RIGHT

MATCHLINE SHEET C-19

59th Ave Line

As-built review

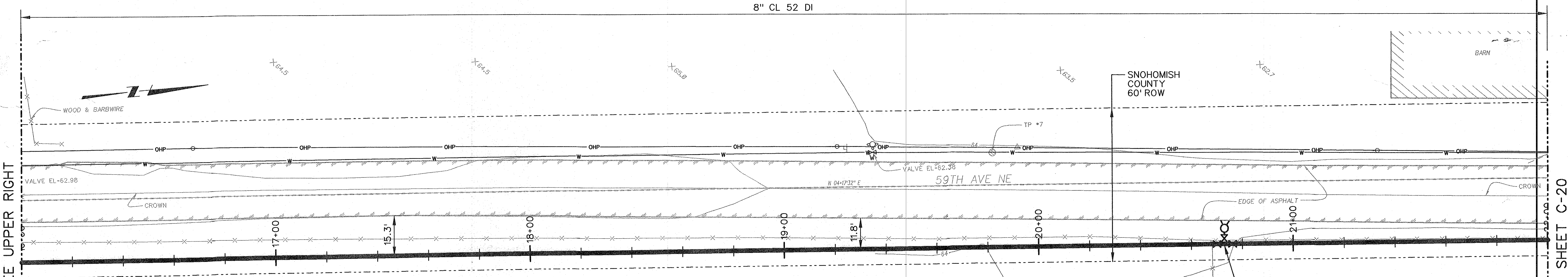
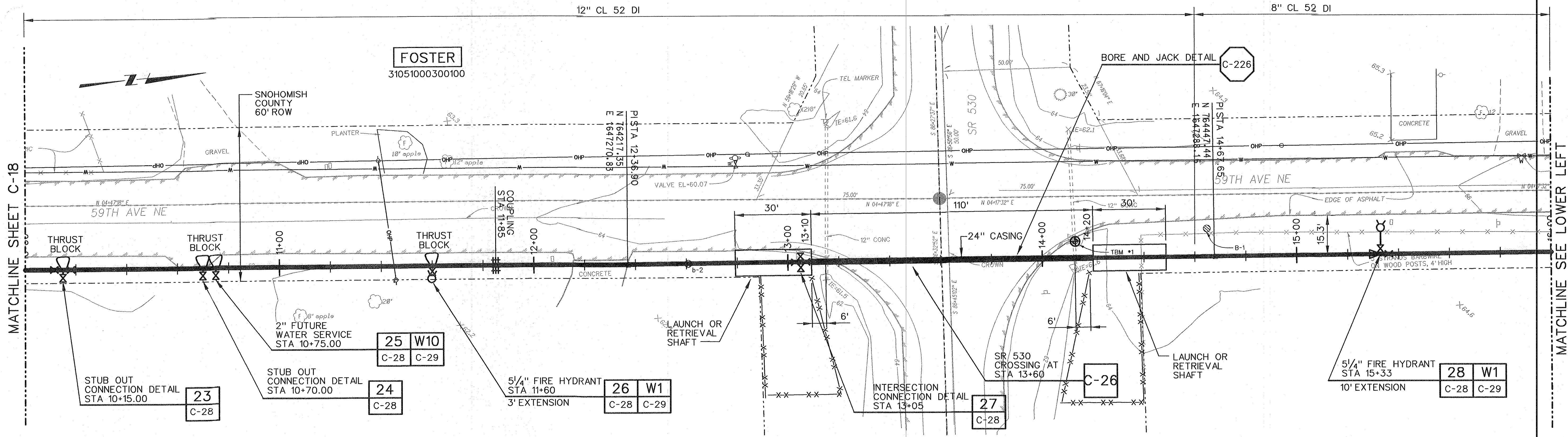
MATCHLINE SHEET C-18

MATCHLINE SEE UPPER RIGHT

MATCHLINE SEE LOWER LEFT

MATCHLINE SHEET C-20

59th WTR LINE



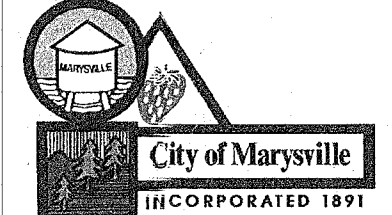
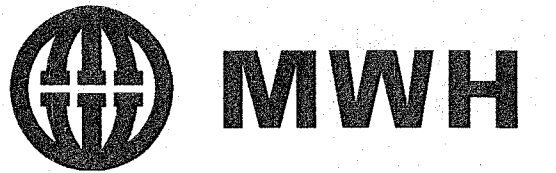
NOTES:

- SEE SHEET GC-1 FOR GENERAL NOTES AND SHEET G-3 FOR SURVEY CONTROL NOTES.
- EXISTING UTILITIES ARE SHOWN FOR THE CONVENIENCE OF THE CONTRACTOR ONLY. DEPTH AND LOCATIONS SHOWN ARE APPROXIMATE AND TAKEN FROM EXISTING UTILITIES RECORDS. THE PLANS MAY NOT SHOW ALL EXISTING UNDERGROUND UTILITIES. SEE NOTE 3.
- PRIOR TO CONSTRUCTION THE CONTRACTOR SHALL HAVE ALL UTILITIES ALONG THE PIPELINE LOCATED. THE CONTRACTOR SHALL USE THE "ONE CALL" CENTER AT 1-800-424-5555 AND OTHER METHODS AS NECESSARY TO DETERMINE THE LOCATIONS OF UTILITIES AT LEAST TWO BUSINESS DAYS IN ADVANCE OF ANY EXCAVATION.
- DEFLECT PIPE JOINTS WITHIN PIPE MANUFACTURER RECOMMENDATIONS AND/OR INSTALL BEND FITTING AT GRADE BREAK FOR DI PIPELINE, AS REQUIRED.
- SEE SNOHOMISH COUNTY ENGINEERING DESIGN AND DEVELOPMENT STANDARD 8-040 ON SHEET C-29 FOR GENERAL R/W USE RESTORATION REQUIREMENTS.
- CONTRACTOR SHALL MAINTAIN VEHICULAR ACCESS TO RESIDENCES DURING WORKING AND NON-WORKING HOURS. COORDINATE TEMPORARY CLOSURE OF DRIVEWAYS WITH PROPERTY OWNERS.
- TRENCHES SHALL BE EXCAVATED TO LINE AND DEPTH SO ALL PIPELINE HAS NOT LESS THAN THREE (3) FEET OR IN EXCESS OF FOUR (4) FEET OF COVER, MEASURED FROM THE TOP OF PIPE TO THE APPROVED FINISH GRADE, UNLESS SHOWN OTHERWISE. SEE DETAIL 10/GC-3 FOR ADDITIONAL INFORMATION.
- CONTRACTOR SHALL CONSTRUCT PIPELINE IN VICINITY OF STATE ROUTE 530 IN ACCORDANCE WITH APPROVED WSDOT PERMIT AND ITS ATTACHED TRAFFIC CONTROL PLAN. SEE SPECIFICATIONS FOR WSDOT PERMIT REQUIREMENTS AND ADDITIONAL INFORMATION.
- CONTRACTOR SHALL RESTORE FENCE REMOVED BETWEEN STA 14+40 AND STA 23+40 TO ITS ORIGINAL CONDITION AFTER WORK IS COMPLETED. WOOD POSTS SHALL BE RESTORED USING NEW TREATED WOOD POSTS OF THE SAME SIZE AND MATERIAL AS EXISTING. CONTRACTOR SHALL COORDINATE FENCE REMOVAL AND RESTORATION WITH CITY OF MARYSVILLE AND PROPERTY OWNER 14 DAYS, MINIMUM, BEFORE FENCE REMOVAL.
- THE CONTRACTOR SHALL INSTALL THRUST BLOCKS IN ACCORDANCE WITH DETAIL C-605/GC-3 AT STA 10+15, STA 10+70, STA 10+75, STA 11+60, STA 13+00, AND STA 15+33.

REV	DATE	BY	DESCRIPTION

SCALE 1"=20'	WARNING 0 1/2 1 IF THIS BAR DOES NOT MEASURE 1" THEN DRAWING IS NOT TO SCALE	DESIGNED D WILLIAMS DRAWN J SCHULZ CHECKED G HARRIS
-----------------	--	---

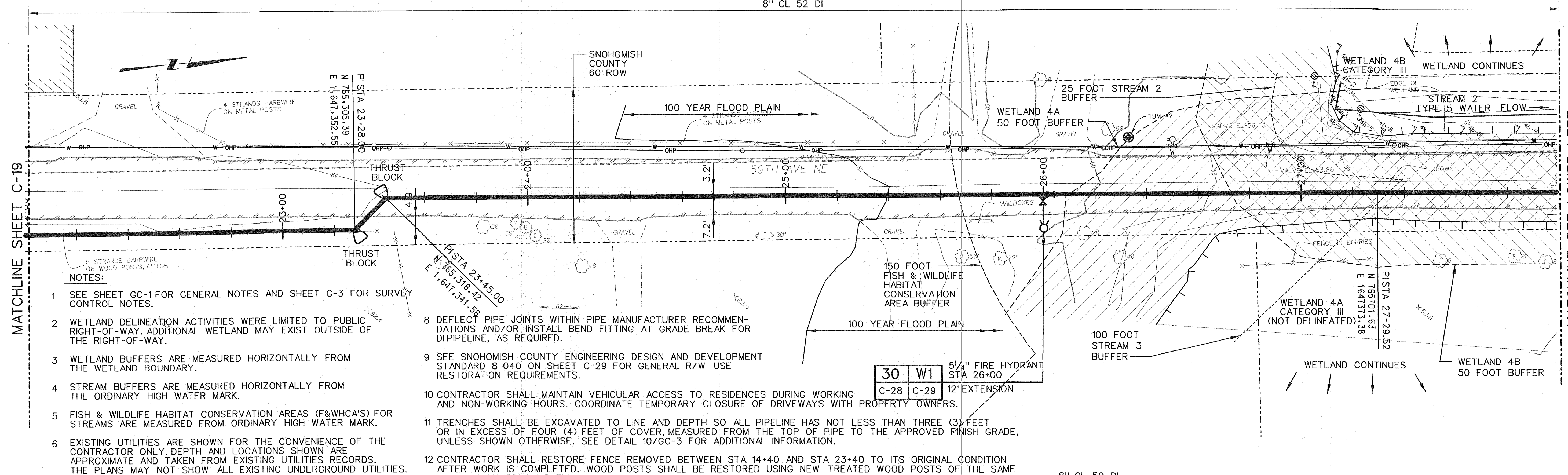
RECORD DRAWING
This record drawing has been prepared, entirely or in part on the basis of unverified information compiled and furnished by others to the preparer who is not responsible for any inaccuracies, errors or omissions which may have been incorporated into the document as a result



CITY OF MARYSVILLE
STILLAGUAMISH RIVER
WTP PROJECT

CIVIL	SHEET C-19
59TH AVE PIPELINE PLAN STA 10+00 TO STA 22+00	
37 OF	

8" CL 52 DI



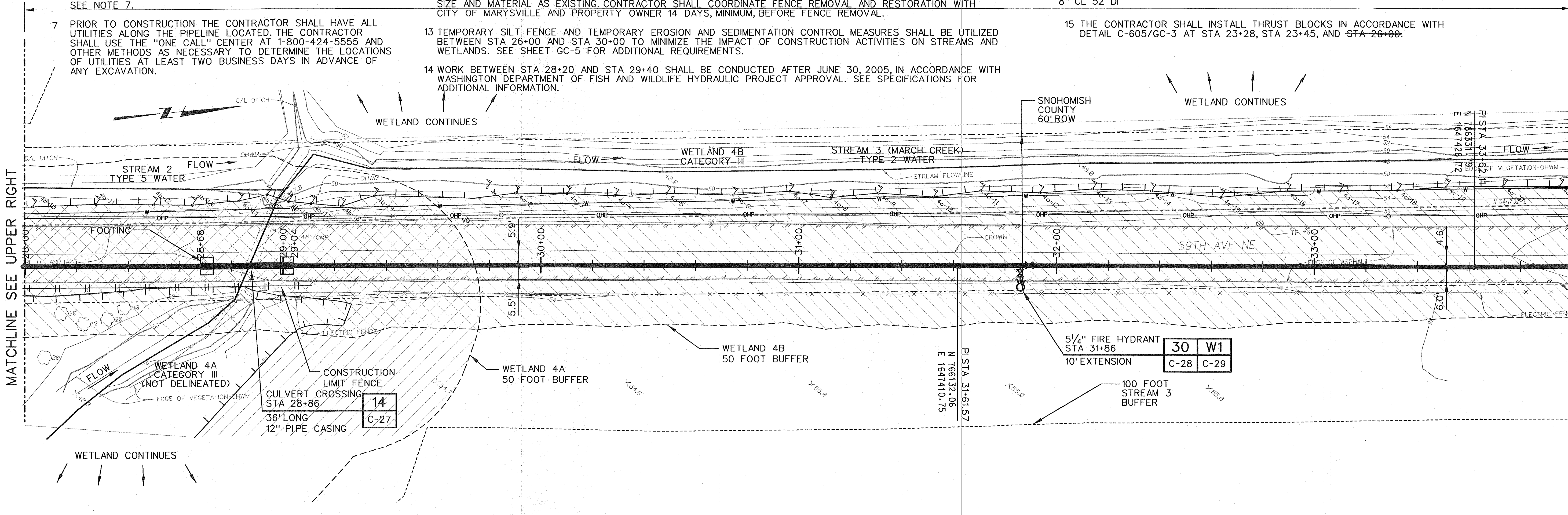
MATCHLINE SHEET C-19

MATCHLINE SEE LOWER LEFT

NOTES:

- SEE SHEET GC-1 FOR GENERAL NOTES AND SHEET G-3 FOR SURVEY CONTROL NOTES.
- WETLAND DELINEATION ACTIVITIES WERE LIMITED TO PUBLIC RIGHT-OF-WAY. ADDITIONAL WETLAND MAY EXIST OUTSIDE OF THE RIGHT-OF-WAY.
- WETLAND BUFFERS ARE MEASURED HORIZONTALLY FROM THE WETLAND BOUNDARY.
- STREAM BUFFERS ARE MEASURED HORIZONTALLY FROM THE ORDINARY HIGH WATER MARK.
- FISH & WILDLIFE HABITAT CONSERVATION AREAS (F&WHCA'S) FOR STREAMS ARE MEASURED FROM ORDINARY HIGH WATER MARK.
- EXISTING UTILITIES ARE SHOWN FOR THE CONVENIENCE OF THE CONTRACTOR ONLY. DEPTH AND LOCATIONS SHOWN ARE APPROXIMATE AND TAKEN FROM EXISTING UTILITIES RECORDS. THE PLANS MAY NOT SHOW ALL EXISTING UNDERGROUND UTILITIES. SEE NOTE 7.
- PRIOR TO CONSTRUCTION THE CONTRACTOR SHALL HAVE ALL UTILITIES ALONG THE PIPELINE LOCATED. THE CONTRACTOR SHALL USE THE "ONE CALL" CENTER AT 1-800-424-5555 AND OTHER METHODS AS NECESSARY TO DETERMINE THE LOCATIONS OF UTILITIES AT LEAST TWO BUSINESS DAYS IN ADVANCE OF ANY EXCAVATION.
- DEFLECT PIPE JOINTS WITHIN PIPE MANUFACTURER RECOMMENDATIONS AND/OR INSTALL BEND FITTING AT GRADE BREAK FOR DIPIPELINE, AS REQUIRED.
- SEE SNOHOMISH COUNTY ENGINEERING DESIGN AND DEVELOPMENT STANDARD 8-040 ON SHEET C-29 FOR GENERAL R/W USE RESTORATION REQUIREMENTS.
- CONTRACTOR SHALL MAINTAIN VEHICULAR ACCESS TO RESIDENCES DURING WORKING AND NON-WORKING HOURS. COORDINATE TEMPORARY CLOSURE OF DRIVEWAYS WITH PROPERTY OWNERS.
- TRENCHES SHALL BE EXCAVATED TO LINE AND DEPTH SO ALL PIPELINE HAS NOT LESS THAN THREE (3) FEET OR IN EXCESS OF FOUR (4) FEET OF COVER, MEASURED FROM THE TOP OF PIPE TO THE APPROVED FINISH GRADE, UNLESS SHOWN OTHERWISE. SEE DETAIL 10/GC-3 FOR ADDITIONAL INFORMATION.
- CONTRACTOR SHALL RESTORE FENCE REMOVED BETWEEN STA 14+40 AND STA 23+40 TO ITS ORIGINAL CONDITION AFTER WORK IS COMPLETED. WOOD POSTS SHALL BE RESTORED USING NEW TREATED WOOD POSTS OF THE SAME SIZE AND MATERIAL AS EXISTING CONTRACTOR SHALL COORDINATE FENCE REMOVAL AND RESTORATION WITH CITY OF MARYSVILLE AND PROPERTY OWNER 14 DAYS, MINIMUM, BEFORE FENCE REMOVAL.
- TEMPORARY SILT FENCE AND TEMPORARY EROSION AND SEDIMENTATION CONTROL MEASURES SHALL BE UTILIZED BETWEEN STA 26+00 AND STA 30+00 TO MINIMIZE THE IMPACT OF CONSTRUCTION ACTIVITIES ON STREAMS AND WETLANDS. SEE SHEET GC-5 FOR ADDITIONAL REQUIREMENTS.
- WORK BETWEEN STA 28+20 AND STA 29+40 SHALL BE CONDUCTED AFTER JUNE 30, 2005, IN ACCORDANCE WITH WASHINGTON DEPARTMENT OF FISH AND WILDLIFE HYDRAULIC PROJECT APPROVAL. SEE SPECIFICATIONS FOR ADDITIONAL INFORMATION.
- THE CONTRACTOR SHALL INSTALL THRUST BLOCKS IN ACCORDANCE WITH DETAIL C-605/GC-3 AT STA 23+28, STA 23+45, AND STA 26+00.

8" CL 52 DI



MATCHLINE SEE UPPER RIGHT

MATCHLINE SHEET C-21

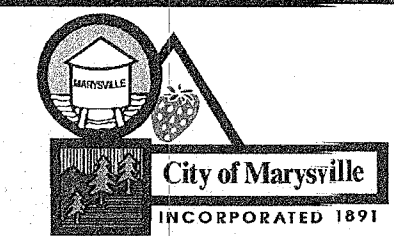
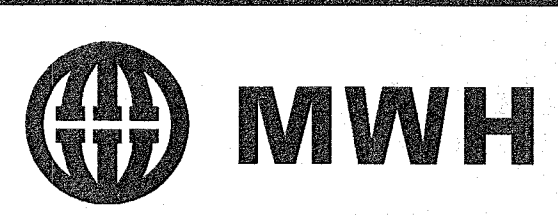
Plot Date: 28-FEB-2006 15:24 User: jeschulz Model: Default ColorTable: bw.ctb DesignScript: MWH_Plot_Pentable_v85.pen PlotScale: 19.99419:1 File: stpc20.dgn

REV	DATE	BY	DESCRIPTION

SCALE	1"=20'
WARNING	IF THIS BAR DOES NOT MEASURE 1" THEN DRAWING IS NOT TO SCALE
DESIGNED	D WILLIAMS
DRAWN	J SCHULZ
CHECKED	G HARRIS

RECORD DRAWING

This record drawing has been prepared, entirely or in part on the basis of unverified information compiled and furnished by others to the preparer who is not responsible for any inaccuracies, errors or omissions which may have been incorporated into the document as a result



CITY OF MARYSVILLE
STILLAGUAMISH RIVER
WTP PROJECT

CIVIL
59TH AVE PIPELINE PLAN
STA 22+00 TO STA 34+00

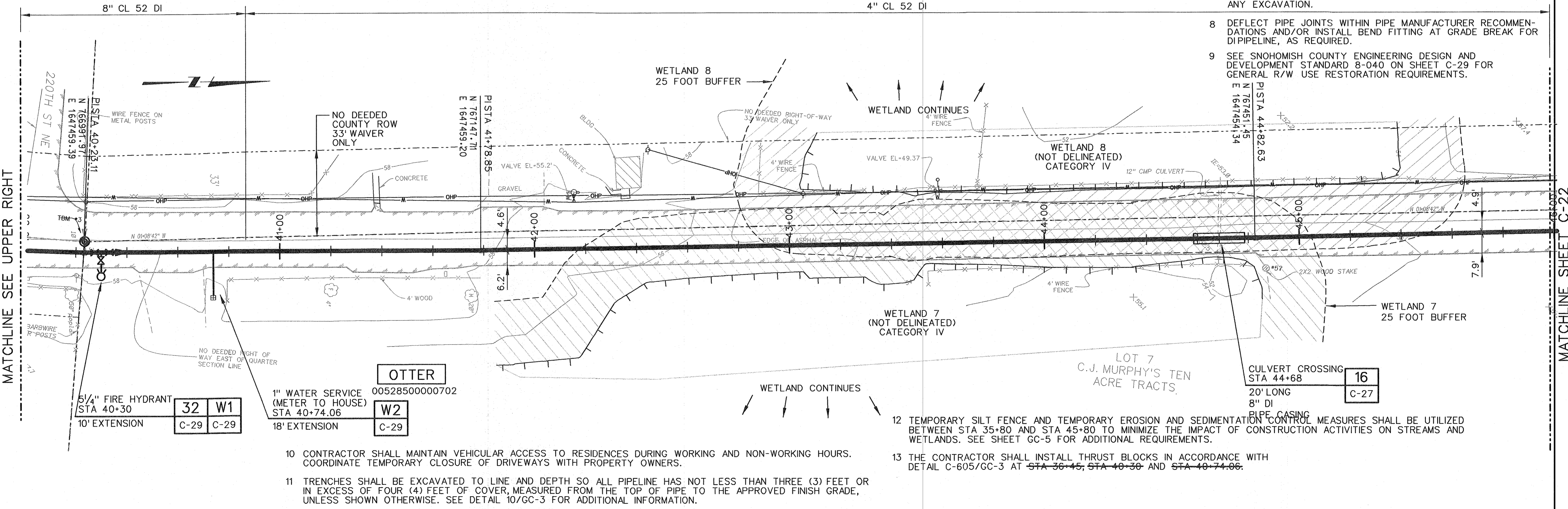
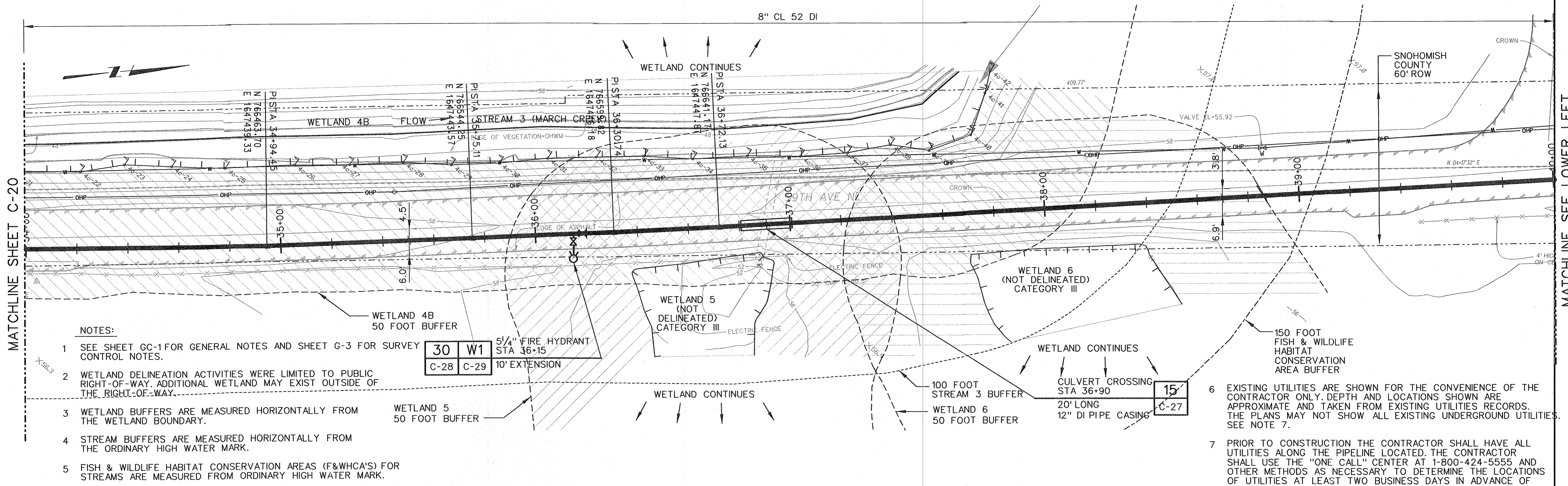
SHEET
C-20
38 OF 134

MATCHLINE SHEET C-20

MATCHLINE SEE LOWER LEFT

MATCHLINE SEE UPPER RIGHT

MATCHLINE SHEET C-22



NOTES:

- SEE SHEET GC-1 FOR GENERAL NOTES AND SHEET G-3 FOR SURVEY CONTROL NOTES.
- WETLAND DELINEATION ACTIVITIES WERE LIMITED TO PUBLIC RIGHT-OF-WAY. ADDITIONAL WETLAND MAY EXIST OUTSIDE OF THE RIGHT-OF-WAY.
- WETLAND BUFFERS ARE MEASURED HORIZONTALLY FROM THE WETLAND BOUNDARY.
- STREAM BUFFERS ARE MEASURED HORIZONTALLY FROM THE ORDINARY HIGH WATER MARK.
- FISH & WILDLIFE HABITAT CONSERVATION AREAS (F&WHCA'S) FOR STREAMS ARE MEASURED FROM ORDINARY HIGH WATER MARK.
- EXISTING UTILITIES ARE SHOWN FOR THE CONVENIENCE OF THE CONTRACTOR ONLY. DEPTH AND LOCATIONS SHOWN ARE APPROXIMATE AND TAKEN FROM EXISTING UTILITIES RECORDS. THE PLANS MAY NOT SHOW ALL EXISTING UNDERGROUND UTILITIES. SEE NOTE 7.
- PRIOR TO CONSTRUCTION THE CONTRACTOR SHALL HAVE ALL UTILITIES ALONG THE PIPELINE LOCATED. THE CONTRACTOR SHALL USE THE "ONE CALL" CENTER AT 1-800-424-5555 AND OTHER METHODS AS NECESSARY TO DETERMINE THE LOCATIONS OF UTILITIES AT LEAST TWO BUSINESS DAYS IN ADVANCE OF ANY EXCAVATION.
- DEFLECT PIPE JOINTS WITHIN PIPE MANUFACTURER RECOMMENDATIONS AND/OR INSTALL BEND FITTING AT GRADE BREAK FOR DIPIPELINE, AS REQUIRED.
- SEE SNOHOMISH COUNTY ENGINEERING DESIGN AND DEVELOPMENT STANDARD 8-040 ON SHEET C-29 FOR GENERAL R/W USE RESTORATION REQUIREMENTS.
- CONTRACTOR SHALL MAINTAIN VEHICULAR ACCESS TO RESIDENCES DURING WORKING AND NON-WORKING HOURS. COORDINATE TEMPORARY CLOSURE OF DRIVEWAYS WITH PROPERTY OWNERS.
- TRENCHES SHALL BE EXCAVATED TO LINE AND DEPTH SO ALL PIPELINE HAS NOT LESS THAN THREE (3) FEET OR IN EXCESS OF FOUR (4) FEET OF COVER, MEASURED FROM THE TOP OF PIPE TO THE APPROVED FINISH GRADE, UNLESS SHOWN OTHERWISE. SEE DETAIL 10/GC-3 FOR ADDITIONAL INFORMATION.
- TEMPORARY SILT FENCE AND TEMPORARY EROSION AND SEDIMENTATION CONTROL MEASURES SHALL BE UTILIZED BETWEEN STA 35+80 AND STA 45+80 TO MINIMIZE THE IMPACT OF CONSTRUCTION ACTIVITIES ON STREAMS AND WETLANDS. SEE SHEET GC-5 FOR ADDITIONAL REQUIREMENTS.
- THE CONTRACTOR SHALL INSTALL THRUST BLOCKS IN ACCORDANCE WITH DETAIL C-605/GC-3 AT STA 36+45, STA 40+30 AND STA 40+74.06.

2-16-06 CRM RECORD DRAWINGS		SCALE 1"=20'	<p>WARNING</p> <p>IF THIS BAR DOES NOT MEASURE 1" THEN DRAWING IS NOT TO SCALE</p>	<p>DESIGNED D WILLIAMS</p> <p>DRAWN J SCHULZ</p> <p>CHECKED G HARRIS</p>	<p>RECORD DRAWING</p> <p>This record drawing has been prepared, entirely or in part on the basis of unverified information compiled and furnished by others to the preparer who is not responsible for any inaccuracies, errors or omissions which may have been incorporated into the document as a result</p>		<p>CITY OF MARYSVILLE</p> <p>STILLAGUAMISH RIVER</p> <p>WTP PROJECT</p>	<p>CIVIL</p> <p>59TH AVE PIPELINE PLAN</p> <p>STA 34+00 TO STA 46+00</p>	<p>SHEET</p> <p>C-21</p> <p>39 OF 134</p>
-----------------------------	--	--------------	--	--	---	--	---	--	---

MATCHLINE SHEET C-21

MATCHLINE SEE UPPER RIGHT

MATCHLINE SEE LOWER LEFT

MATCHLINE SHEET C-23

4" CL 52 DI

4" CL 52 DI

59TH AVE

LOT 8
C.J. MURPHY'S TEN
ACRE TRACTS

NOTES:

- SEE SHEET GC-1 FOR GENERAL NOTES AND SHEET G-3 FOR SURVEY CONTROL NOTES.
- EXISTING UTILITIES ARE SHOWN FOR THE CONVENIENCE OF THE CONTRACTOR ONLY. DEPTH AND LOCATIONS SHOWN ARE APPROXIMATE AND TAKEN FROM EXISTING UTILITIES RECORDS. THE PLANS MAY NOT SHOW ALL EXISTING UNDERGROUND UTILITIES. SEE NOTE 3.
- PRIOR TO CONSTRUCTION THE CONTRACTOR SHALL HAVE ALL UTILITIES ALONG THE PIPELINE LOCATED. THE CONTRACTOR SHALL USE THE "ONE CALL" CENTER AT 1-800-424-5555 AND OTHER METHODS AS NECESSARY TO DETERMINE THE LOCATIONS OF UTILITIES AT LEAST TWO BUSINESS DAYS IN ADVANCE OF ANY EXCAVATION.
- DEFLECT PIPE JOINTS WITHIN PIPE MANUFACTURER RECOMMENDATIONS AND/OR INSTALL BEND FITTING AT GRADE BREAK FOR PIPELINE, AS REQUIRED.
- SEE SNOHOMISH COUNTY ENGINEERING DESIGN AND DEVELOPMENT STANDARD 8-040 ON SHEET C-29 FOR GENERAL R/W USE RESTORATION REQUIREMENTS.

- CONTRACTOR SHALL MAINTAIN VEHICULAR ACCESS TO RESIDENCES DURING WORKING AND NON-WORKING HOURS. COORDINATE TEMPORARY CLOSURE OF DRIVEWAYS WITH PROPERTY OWNERS.
- TRENCHES SHALL BE EXCAVATED TO LINE AND DEPTH SO ALL PIPELINE HAS NOT LESS THAN THREE (3) FEET OR IN EXCESS OF FOUR (4) FEET OF COVER, MEASURED FROM THE TOP OF PIPE TO THE APPROVED FINISH GRADE, UNLESS SHOWN OTHERWISE. SEE DETAIL 10/GC-3 FOR ADDITIONAL INFORMATION.

C.J. MURPHY'S TEN
ACRE TRACTS



CB RIM=56.59
 RE 6" PVC S=53.46
 RE 6" PVC E=53.35
 RE 6" PVC E=53.49

PISTA 46+93.91
 N 761662.68
 E 1647449.83

PISTA 49+58.62
 N 767921.35
 E 1647445.08

PISTA 52+01.03
 N 768221.81
 E 1647449.15

CB RIM=56.71
 RE 6" PVC S=54.84
 RE 4" PVC E=54.78
 RE 4" PVC N=55.01

PISTA 52+01.03

PISTA 56+54.83
 N 766623.31
 E 1647452.39

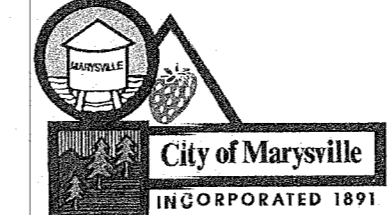
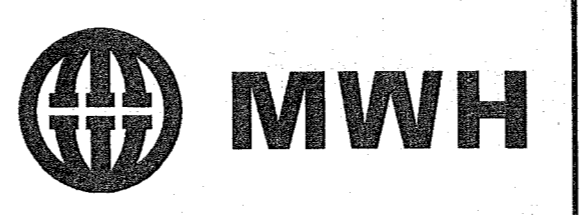
PISTA 54+26.80
 N 768395.11
 E 1647456.24

PISTA 54+70.10
 N 768438.61
 E 1647455.88

YD RIM=57.44
 RE 4" PVC S=56.62
 RE 4" PVC E=56.74
 RE 2" PVC N=56.71

DESIGNED D WILLIAMS
 DRAWN J SCHULZ
 CHECKED C HARRIS

RECORD DRAWING
 This record drawing has been prepared, entirely or in part on the basis of unverified information compiled and furnished by others to the preparer who is not responsible for any inaccuracies, errors or omissions which may have been incorporated into the document as a result



CITY OF MARYSVILLE
 STILLAGUAMISH RIVER
 WTP PROJECT

CIVIL
 59TH AVE PIPELINE PLAN
 STA 46+00 TO STA 58+00

SHEET
C-22
 40 OF 134

REV	DATE	BY	DESCRIPTION

SCALE	1"=20'
WARNING	IF THIS BAR DOES NOT MEASURE 1" THEN DRAWING IS NOT TO SCALE

2-16-06 CRM RECORD DRAWINGS

MATCHLINE SHEET C-22

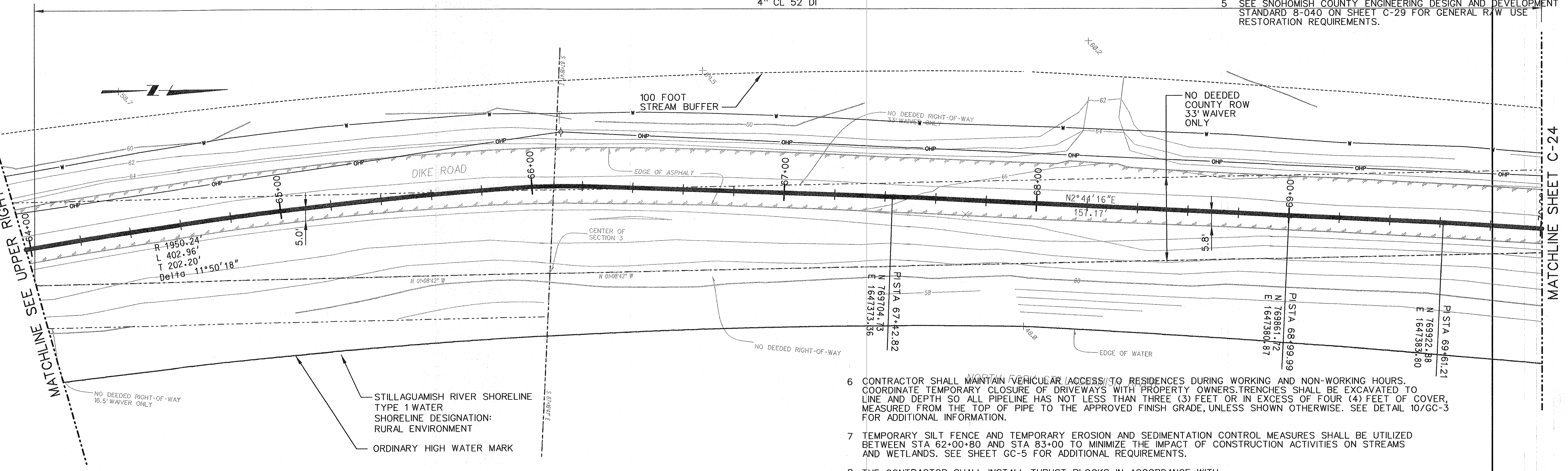
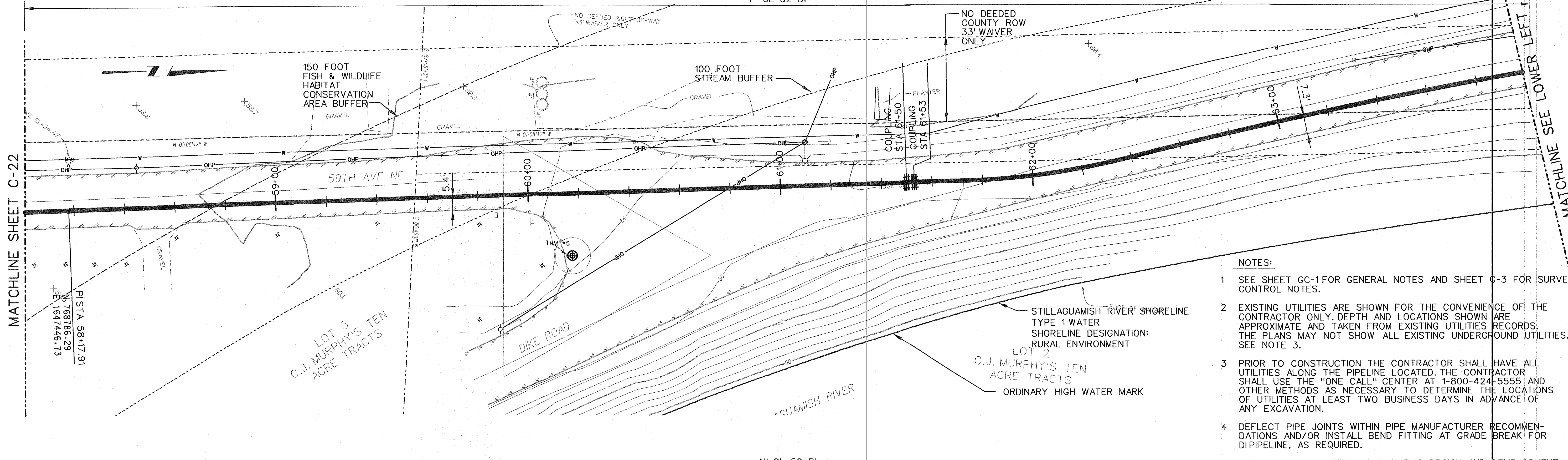
MATCHLINE SEE LOWER LEFT

MATCHLINE SEE UPPER RIGHT

MATCHLINE SHEET C-24

4" CL 52 DI

4" CL 52 DI



- NOTES:
- SEE SHEET GC-1 FOR GENERAL NOTES AND SHEET C-3 FOR SURVEY CONTROL NOTES.
 - EXISTING UTILITIES ARE SHOWN FOR THE CONVENIENCE OF THE CONTRACTOR ONLY. DEPTH AND LOCATIONS SHOWN ARE APPROXIMATE AND TAKEN FROM EXISTING UTILITIES RECORDS. THE PLANS MAY NOT SHOW ALL EXISTING UNDERGROUND UTILITIES. SEE NOTE 3.
 - PRIOR TO CONSTRUCTION THE CONTRACTOR SHALL HAVE ALL UTILITIES ALONG THE PIPELINE LOCATED. THE CONTRACTOR SHALL USE THE "ONE CALL" CENTER AT 1-800-424-5555 AND OTHER METHODS AS NECESSARY TO DETERMINE THE LOCATIONS OF UTILITIES AT LEAST TWO BUSINESS DAYS IN ADVANCE OF ANY EXCAVATION.
 - DEFLECT PIPE JOINTS WITHIN PIPE MANUFACTURER RECOMMENDATIONS AND/OR INSTALL BEND FITTING AT GRADE BREAK FOR DIPIPELINE, AS REQUIRED.
 - SEE SNOHOMISH COUNTY ENGINEERING DESIGN AND DEVELOPMENT STANDARD 8-040 ON SHEET C-29 FOR GENERAL RAW USE RESTORATION REQUIREMENTS.

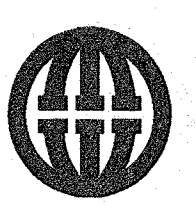
- CONTRACTOR SHALL MAINTAIN VEHICULAR ACCESS TO RESIDENCES DURING WORKING AND NON-WORKING HOURS. COORDINATE TEMPORARY CLOSURE OF DRIVEWAYS WITH PROPERTY OWNERS. TRENCHES SHALL BE EXCAVATED TO LINE AND DEPTH SO ALL PIPELINE HAS NOT LESS THAN THREE (3) FEET OR IN EXCESS OF FOUR (4) FEET OF COVER, MEASURED FROM THE TOP OF PIPE TO THE APPROVED FINISH GRADE, UNLESS SHOWN OTHERWISE. SEE DETAIL 10/GC-3 FOR ADDITIONAL INFORMATION.
- TEMPORARY SILT FENCE AND TEMPORARY EROSION AND SEDIMENTATION CONTROL MEASURES SHALL BE UTILIZED BETWEEN STA 62+00+80 AND STA 83+00 TO MINIMIZE THE IMPACT OF CONSTRUCTION ACTIVITIES ON STREAMS AND WETLANDS. SEE SHEET GC-5 FOR ADDITIONAL REQUIREMENTS.
- THE CONTRACTOR SHALL INSTALL THRUST BLOCKS IN ACCORDANCE WITH DETAIL C-605/GC-3 AT STA 62+07.88.

REV	DATE	BY	DESCRIPTION

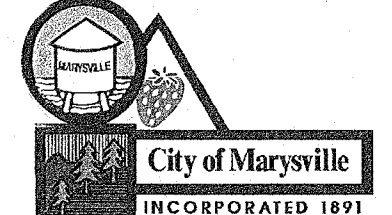
SCALE	WARNING	DESIGNED	D. WILLIAMS
1"=20'	IF THIS BAR DOES NOT MEASURE 1" THEN DRAWING IS NOT TO SCALE	DRAWN	J. SCHULZ
		CHECKED	G. HARRIS

RECORD DRAWING

This record drawing has been prepared, entirely or in part on the basis of unverified information compiled and furnished by others to the preparer who is not responsible for any inaccuracies, errors or omissions which may have been incorporated into the document as a result



MWH

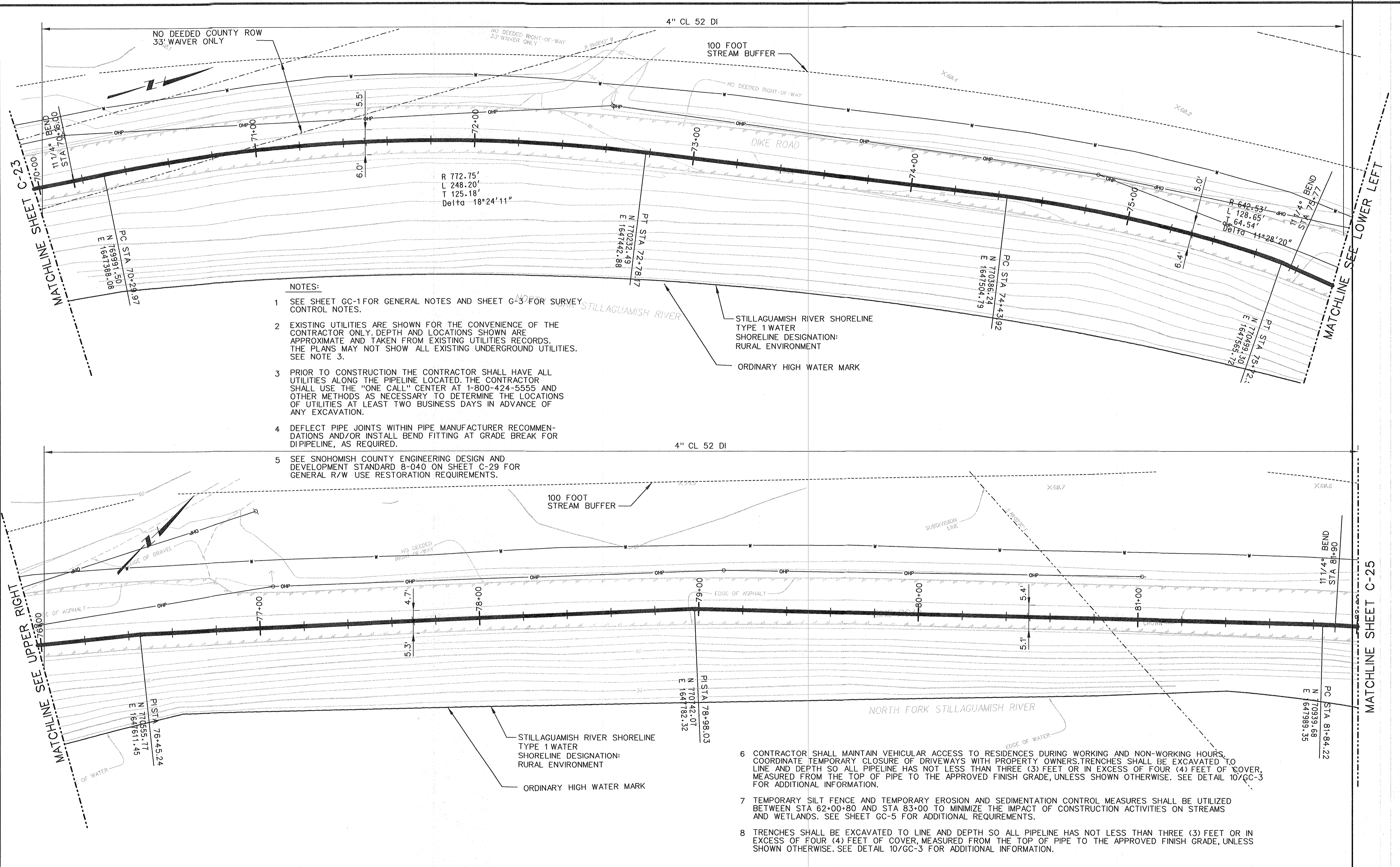


CITY OF MARYSVILLE
STILLAGUAMISH RIVER
WTP PROJECT

CIVIL
59TH AVE PIPELINE PLAN
STA 58+00 TO STA 70+00

SHEET
C-23
41 OF 134

File: stpc24.dgn Model: Default ColorTable: bw.ctb DesignScript: MWH_ipct_Pentable_v85.pen PlotScale: 19.9941191 Plot Date: 28-FEB-2006 15:28 User: jeschulz



- NOTES:**
- SEE SHEET GC-1 FOR GENERAL NOTES AND SHEET C-3 FOR SURVEY CONTROL NOTES.
 - EXISTING UTILITIES ARE SHOWN FOR THE CONVENIENCE OF THE CONTRACTOR ONLY. DEPTH AND LOCATIONS SHOWN ARE APPROXIMATE AND TAKEN FROM EXISTING UTILITIES RECORDS. THE PLANS MAY NOT SHOW ALL EXISTING UNDERGROUND UTILITIES. SEE NOTE 3.
 - PRIOR TO CONSTRUCTION THE CONTRACTOR SHALL HAVE ALL UTILITIES ALONG THE PIPELINE LOCATED. THE CONTRACTOR SHALL USE THE "ONE CALL" CENTER AT 1-800-424-5555 AND OTHER METHODS AS NECESSARY TO DETERMINE THE LOCATIONS OF UTILITIES AT LEAST TWO BUSINESS DAYS IN ADVANCE OF ANY EXCAVATION.
 - DEFLECT PIPE JOINTS WITHIN PIPE MANUFACTURER RECOMMENDATIONS AND/OR INSTALL BEND FITTING AT GRADE BREAK FOR DI PIPELINE, AS REQUIRED.
 - SEE SNOHOMISH COUNTY ENGINEERING DESIGN AND DEVELOPMENT STANDARD 8-040 ON SHEET C-29 FOR GENERAL R/W USE RESTORATION REQUIREMENTS.

- CONTRACTOR SHALL MAINTAIN VEHICULAR ACCESS TO RESIDENCES DURING WORKING AND NON-WORKING HOURS. COORDINATE TEMPORARY CLOSURE OF DRIVEWAYS WITH PROPERTY OWNERS. TRENCHES SHALL BE EXCAVATED TO LINE AND DEPTH SO ALL PIPELINE HAS NOT LESS THAN THREE (3) FEET OR IN EXCESS OF FOUR (4) FEET OF COVER, MEASURED FROM THE TOP OF PIPE TO THE APPROVED FINISH GRADE, UNLESS SHOWN OTHERWISE. SEE DETAIL 10/GC-3 FOR ADDITIONAL INFORMATION.
- TEMPORARY SILT FENCE AND TEMPORARY EROSION AND SEDIMENTATION CONTROL MEASURES SHALL BE UTILIZED BETWEEN STA 62+00+80 AND STA 83+00 TO MINIMIZE THE IMPACT OF CONSTRUCTION ACTIVITIES ON STREAMS AND WETLANDS. SEE SHEET GC-5 FOR ADDITIONAL REQUIREMENTS.
- TRENCHES SHALL BE EXCAVATED TO LINE AND DEPTH SO ALL PIPELINE HAS NOT LESS THAN THREE (3) FEET OR IN EXCESS OF FOUR (4) FEET OF COVER, MEASURED FROM THE TOP OF PIPE TO THE APPROVED FINISH GRADE, UNLESS SHOWN OTHERWISE. SEE DETAIL 10/GC-3 FOR ADDITIONAL INFORMATION.

REV	DATE	BY	DESCRIPTION

SCALE	1"=20'
WARNING	IF THIS BAR DOES NOT MEASURE 1" THEN DRAWING IS NOT TO SCALE

DESIGNED D WILLIAMS
 DRAWN J SCHULZ
 CHECKED G HARRIS

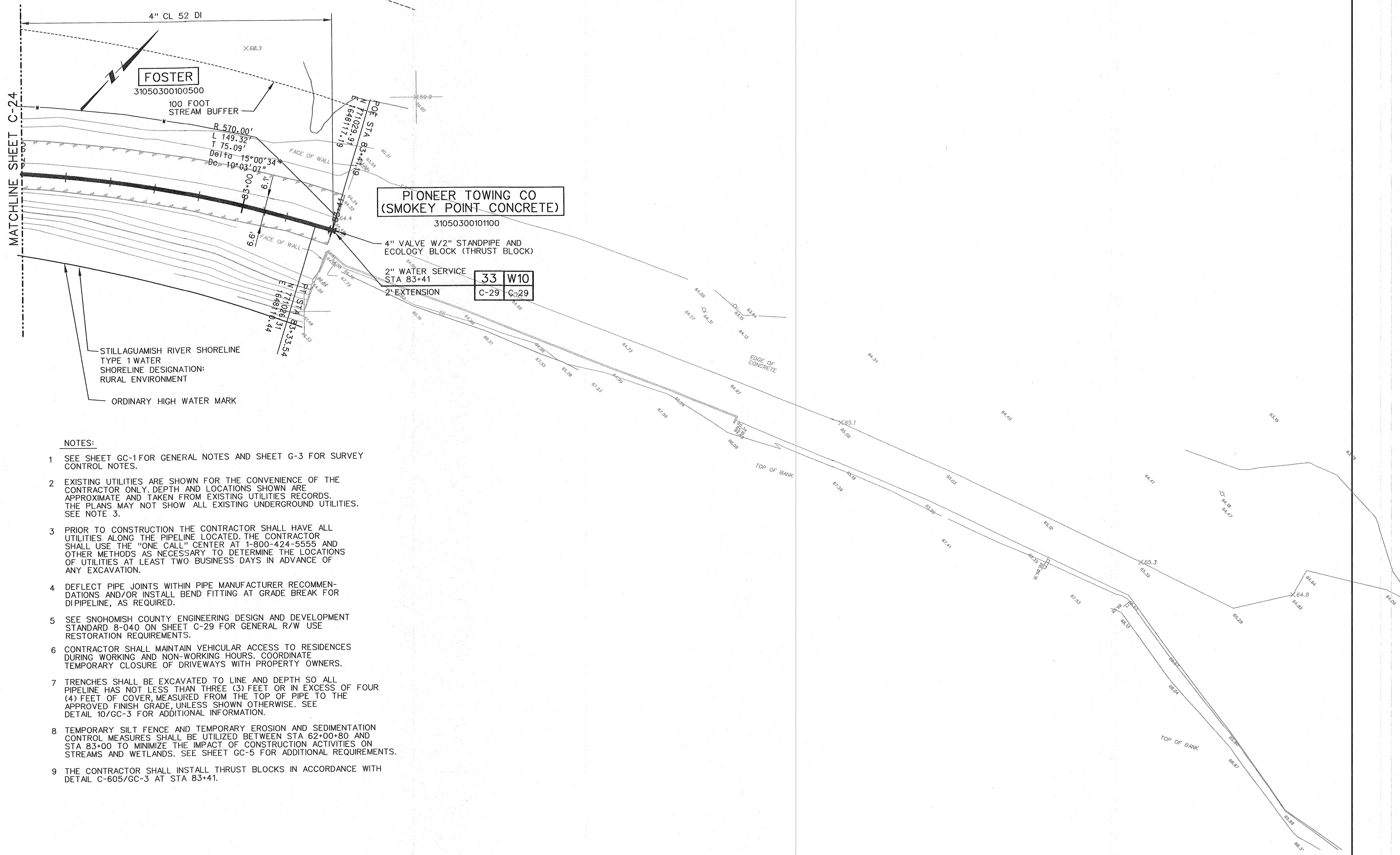
RECORD DRAWING
 This record drawing has been prepared, entirely or in part on the basis of unverified information compiled and furnished by others to the preparer who is not responsible for any inaccuracies, errors or omissions which may have been incorporated into the document as a result



CITY OF MARYSVILLE
STILLAGUAMISH RIVER
WTP PROJECT

CIVIL
59TH AVE PIPELINE PLAN
STA 70+00 TO STA 82+00

SHEET
C-24
 42 OF 134



NOTES:

- 1 SEE SHEET GC-1 FOR GENERAL NOTES AND SHEET G-3 FOR SURVEY CONTROL NOTES.
- 2 EXISTING UTILITIES ARE SHOWN FOR THE CONVENIENCE OF THE CONTRACTOR ONLY. DEPTH AND LOCATIONS SHOWN ARE APPROXIMATE AND TAKEN FROM EXISTING UTILITIES RECORDS. THE PLANS MAY NOT SHOW ALL EXISTING UNDERGROUND UTILITIES. SEE NOTE 3.
- 3 PRIOR TO CONSTRUCTION THE CONTRACTOR SHALL HAVE ALL UTILITIES ALONG THE PIPELINE LOCATED. THE CONTRACTOR SHALL USE THE "ONE CALL" CENTER AT 1-800-424-5555 AND OTHER METHODS AS NECESSARY TO DETERMINE THE LOCATIONS OF UTILITIES AT LEAST TWO BUSINESS DAYS IN ADVANCE OF ANY EXCAVATION.
- 4 DEFLECT PIPE JOINTS WITHIN PIPE MANUFACTURER RECOMMENDATIONS AND/OR INSTALL BEND FITTING AT GRADE BREAK FOR DIPIPELINE, AS REQUIRED.
- 5 SEE SNOHOMISH COUNTY ENGINEERING DESIGN AND DEVELOPMENT STANDARD 8-040 ON SHEET C-29 FOR GENERAL R/W USE RESTORATION REQUIREMENTS.
- 6 CONTRACTOR SHALL MAINTAIN VEHICULAR ACCESS TO RESIDENCES DURING WORKING AND NON-WORKING HOURS. COORDINATE TEMPORARY CLOSURE OF DRIVEWAYS WITH PROPERTY OWNERS.
- 7 TRENCHES SHALL BE EXCAVATED TO LINE AND DEPTH SO ALL PIPELINE HAS NOT LESS THAN THREE (3) FEET OR IN EXCESS OF FOUR (4) FEET OF COVER, MEASURED FROM THE TOP OF PIPE TO THE APPROVED FINISH GRADE, UNLESS SHOWN OTHERWISE. SEE DETAIL 10/GC-3 FOR ADDITIONAL INFORMATION.
- 8 TEMPORARY SILT FENCE AND TEMPORARY EROSION AND SEDIMENTATION CONTROL MEASURES SHALL BE UTILIZED BETWEEN STA 62+00+80 AND STA 83+00 TO MINIMIZE THE IMPACT OF CONSTRUCTION ACTIVITIES ON STREAMS AND WETLANDS. SEE SHEET GC-5 FOR ADDITIONAL REQUIREMENTS.
- 9 THE CONTRACTOR SHALL INSTALL THRUST BLOCKS IN ACCORDANCE WITH DETAIL C-605/GC-3 AT STA 83+41.

REV	DATE	BY	DESCRIPTION

SCALE	WARNING
1"=20'	0 1/2 1 IF THIS BAR DOES NOT MEASURE 1" THEN DRAWING IS NOT TO SCALE

DESIGNED	D WILLIAMS
DRAWN	J SCHULZ
CHECKED	G HARRIS

RECORD DRAWING

This record drawing has been prepared, entirely or in part on the basis of unverified information compiled and furnished by others to the preparer who is not responsible for any inaccuracies, errors or omissions which may have been incorporated into the document as a result

CITY OF MARYSVILLE
STILLAGUAMISH RIVER
WTP PROJECT

CIVIL

59TH AVE PIPELINE PLAN
STA 82+00 TO END

Plot Date: 28-FEB-2006 15:29

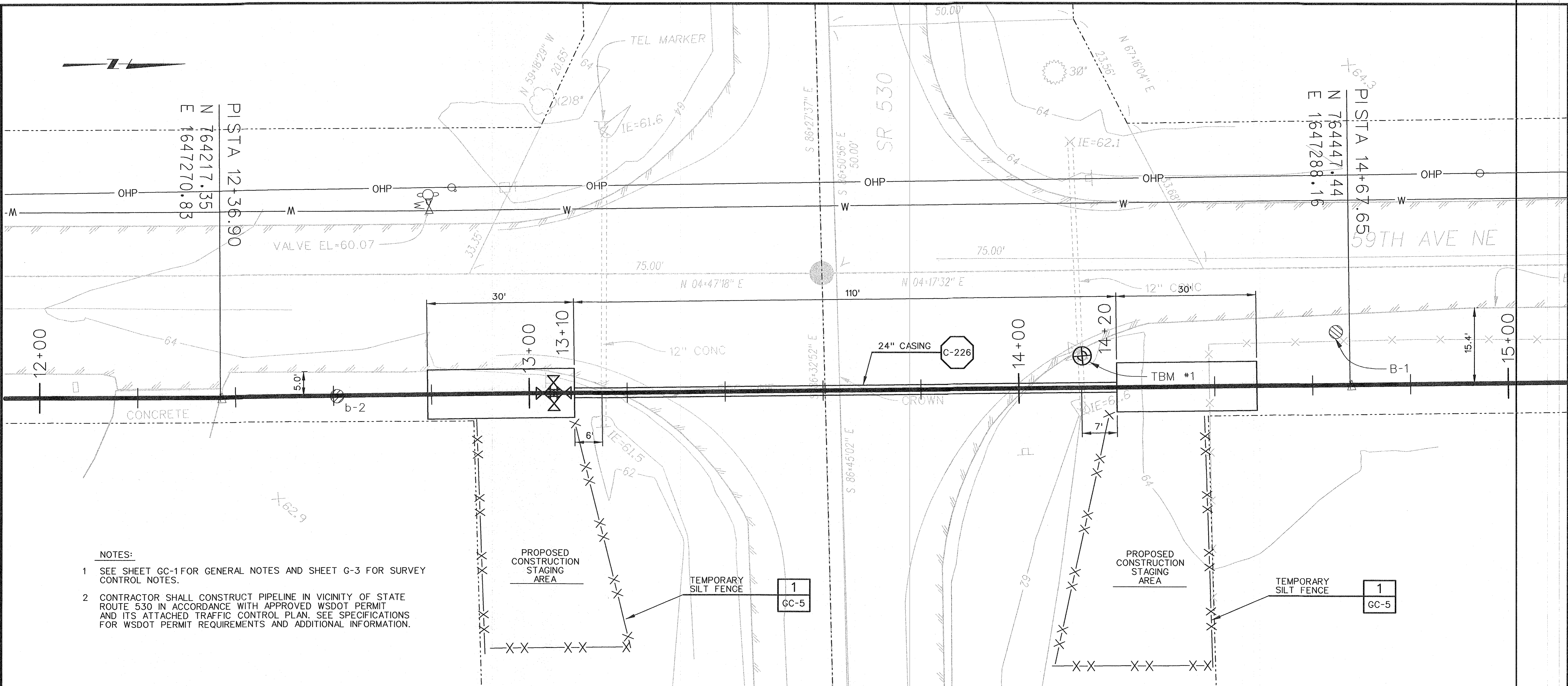
User: jeschulz

PlotScale: 9.997061

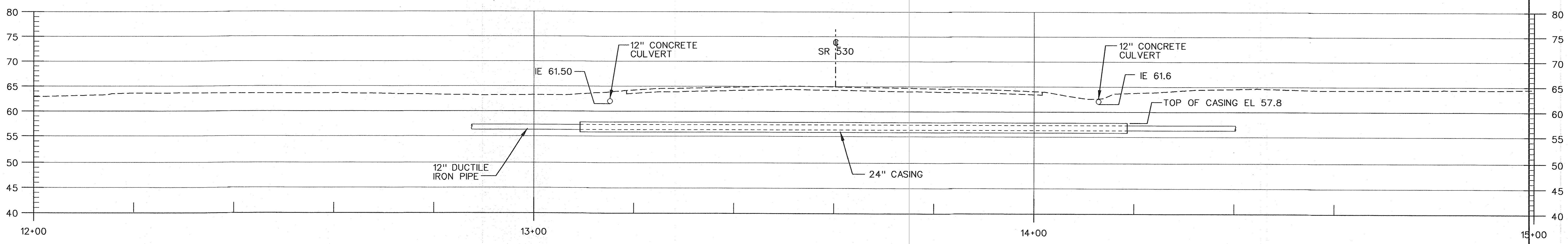
DesignScript: MWH_Plot_Pentable_v85.pen

ColorTable: bw.ctb

Model: Default



- NOTES:**
- 1 SEE SHEET GC-1 FOR GENERAL NOTES AND SHEET G-3 FOR SURVEY CONTROL NOTES.
 - 2 CONTRACTOR SHALL CONSTRUCT PIPELINE IN VICINITY OF STATE ROUTE 530 IN ACCORDANCE WITH APPROVED WSDOT PERMIT AND ITS ATTACHED TRAFFIC CONTROL PLAN. SEE SPECIFICATIONS FOR WSDOT PERMIT REQUIREMENTS AND ADDITIONAL INFORMATION.

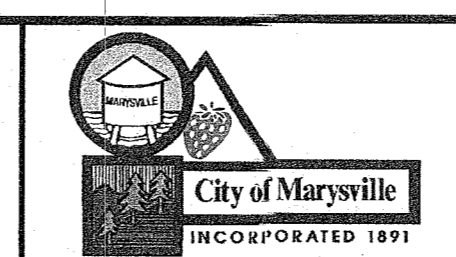
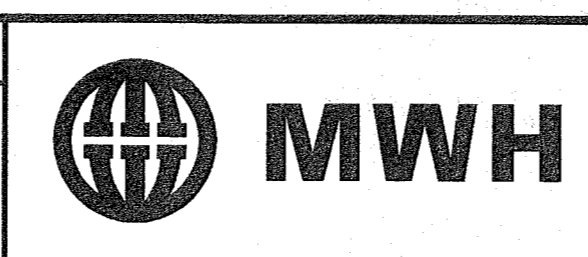


REV	DATE	BY	DESCRIPTION

SCALE	1"=10'
WARNING	IF THIS BAR DOES NOT MEASURE 1" THEN DRAWING IS NOT TO SCALE
DESIGNED	D WILLIAMS
DRAWN	J SCHULZ
CHECKED	G HARRIS

RECORD DRAWING

This record drawing has been prepared, entirely or in part on the basis of unverified information compiled and furnished by others to the preparer who is not responsible for any inaccuracies, errors or omissions which may have been incorporated into the document as a result



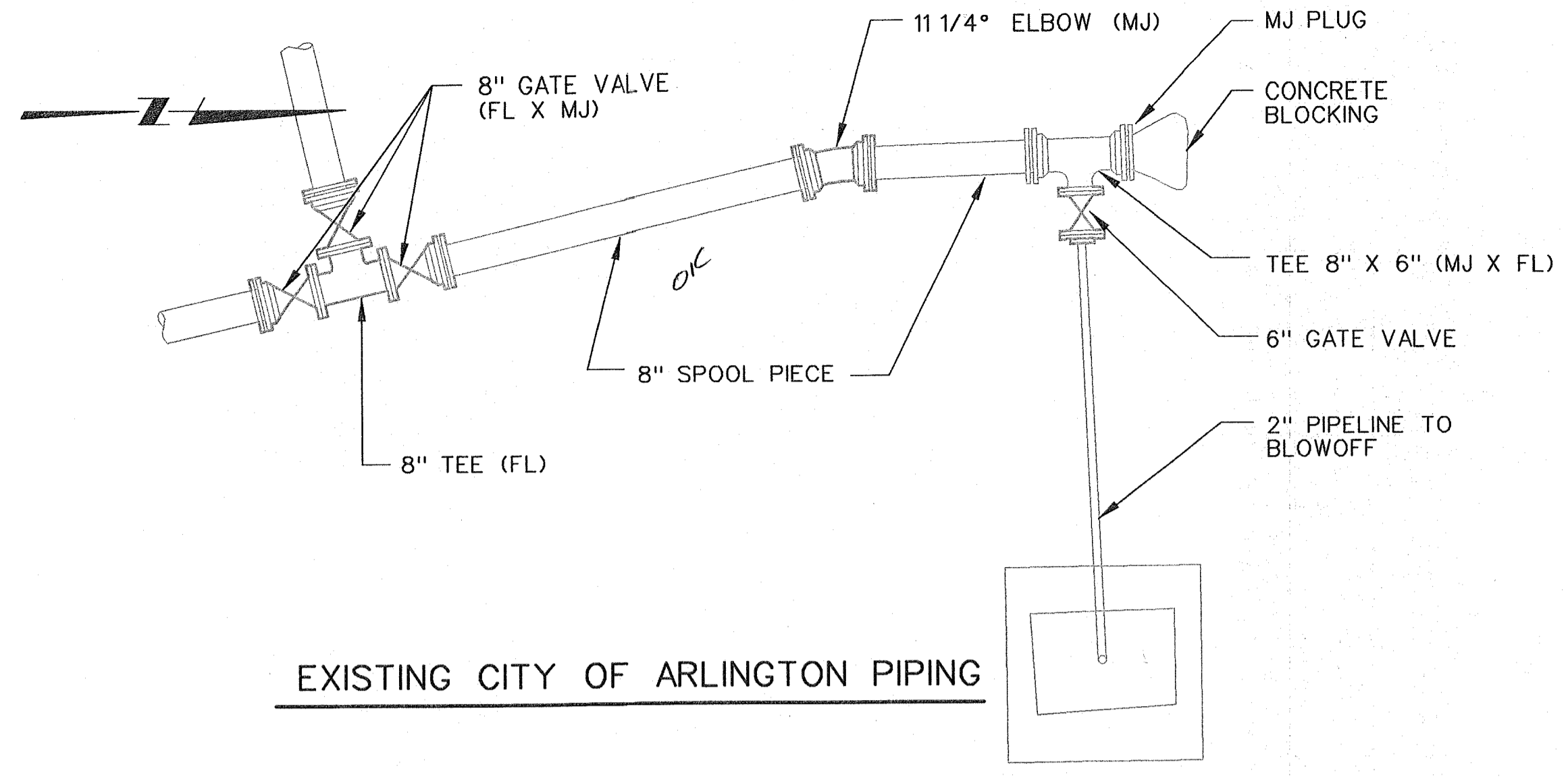
CITY OF MARYSVILLE
STILLAGUAMISH RIVER
WTP PROJECT

CIVIL

59TH AVE PIPELINE PLAN
SR 530 CROSSING AT STA 13+60

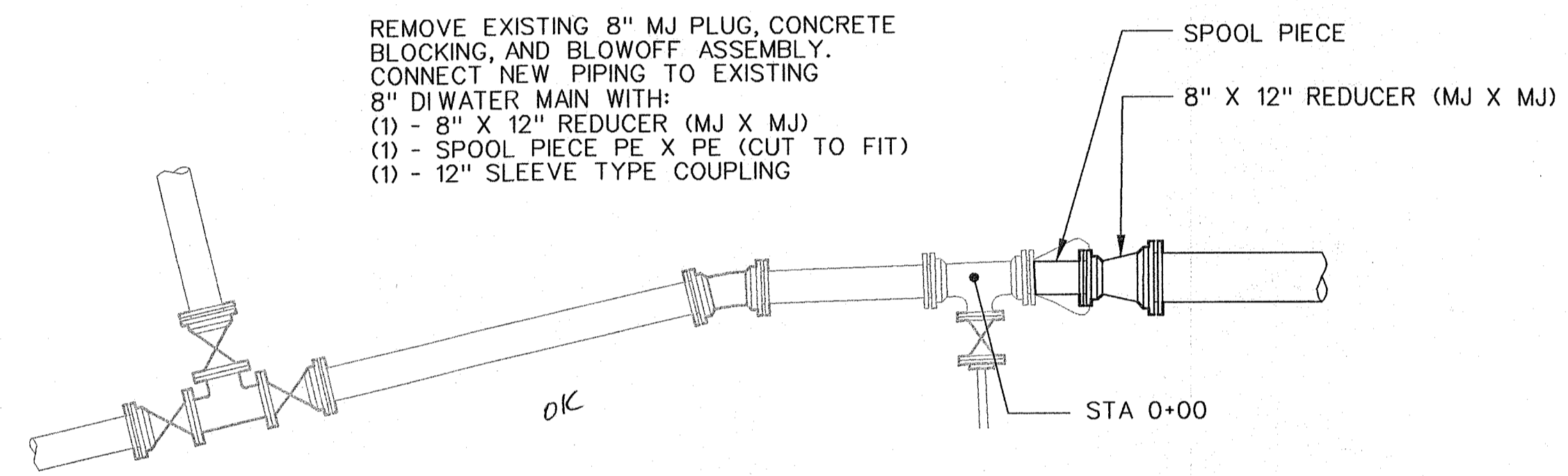
SHEET
C-26
44 OF 134

Plot Date: 28-FEB-2006 15:30
 User: jeschulz
 PlotScale: 2.665816:1
 DesignScript: MWH_lplot_Pentable_v65.pen
 Model: Default
 ColorTable: bw.ctb
 File: stpc27.dgn

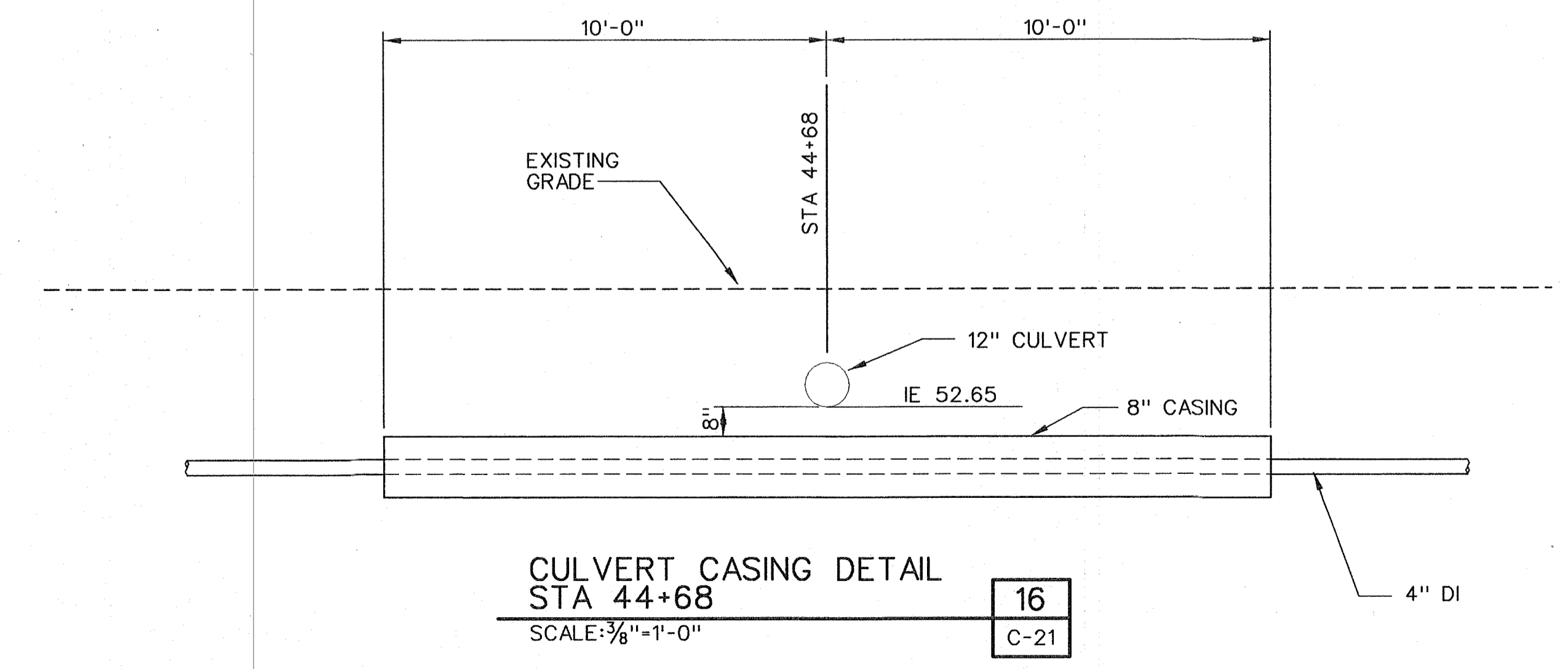
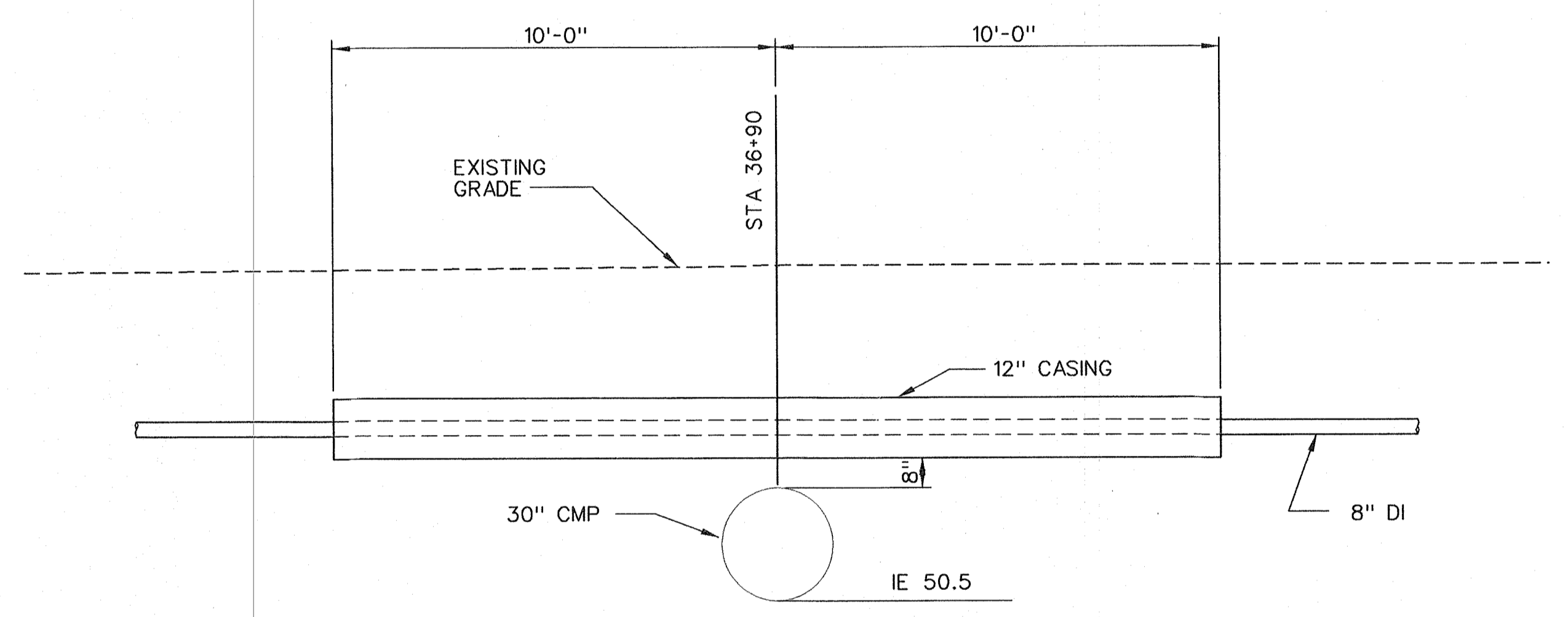
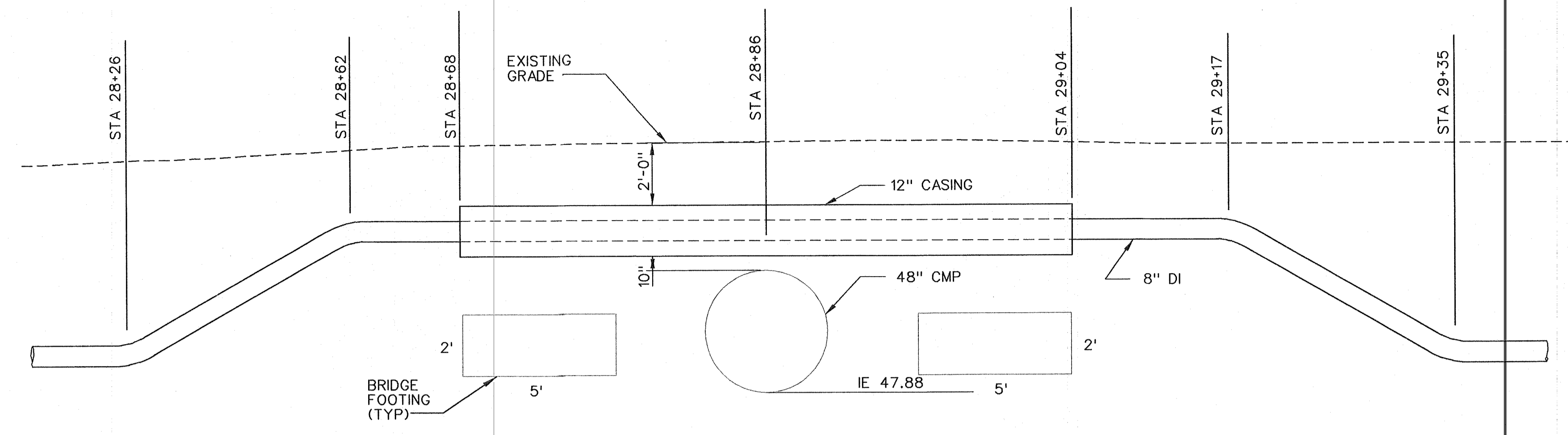
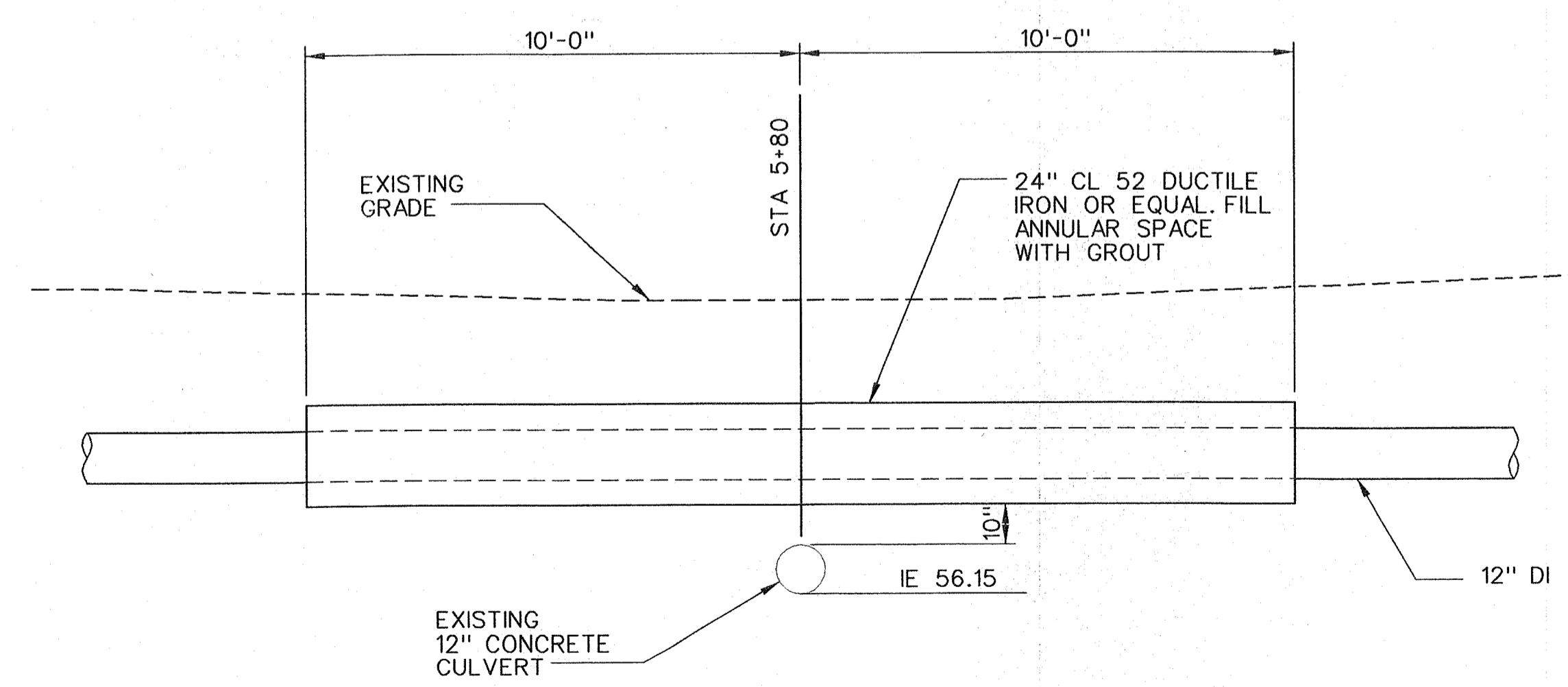


NOTES:

REMOVE EXISTING 8" MJ PLUG, CONCRETE BLOCKING, AND BLOWOFF ASSEMBLY. CONNECT NEW PIPING TO EXISTING 8" DI WATER MAIN WITH:
 (1) - 8" X 12" REDUCER (MJ X MJ)
 (1) - SPOOL PIECE PE X PE (CUT TO FIT)
 (1) - 12" SLEEVE TYPE COUPLING



BEGINNING CONNECTION DETAIL 12
SCALE: 3/8"=1'-0" C-18

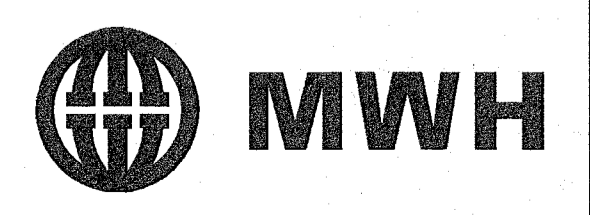


REV	DATE	BY	DESCRIPTION
R	2-16-06	CRM	RECORD DRAWINGS

SCALE	AS SHOWN
DESIGNED	D WILLIAMS
DRAWN	J SCHULZ
CHECKED	G HARRIS

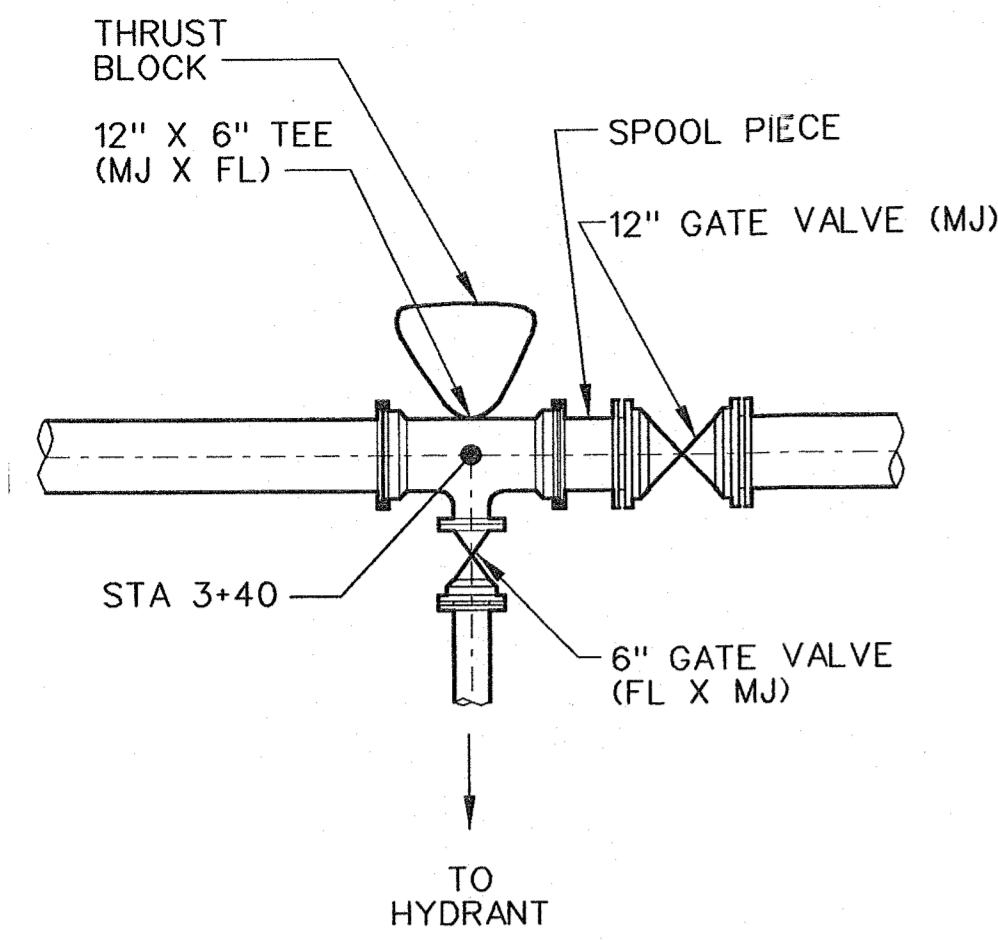
RECORD DRAWING

This record drawing has been prepared, entirely or in part on the basis of unverified information compiled and furnished by others to the preparer who is not responsible for any inaccuracies, errors or omissions which may have been incorporated into the drawing as a result.

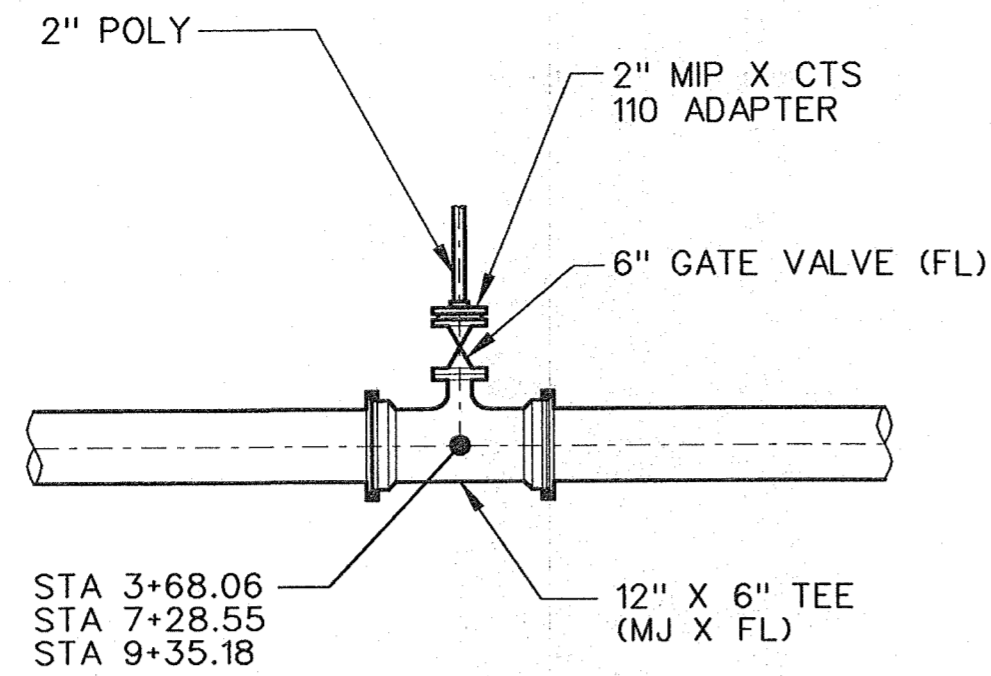


CITY OF MARYSVILLE
STILLAGUAMISH RIVER
WTP PROJECT

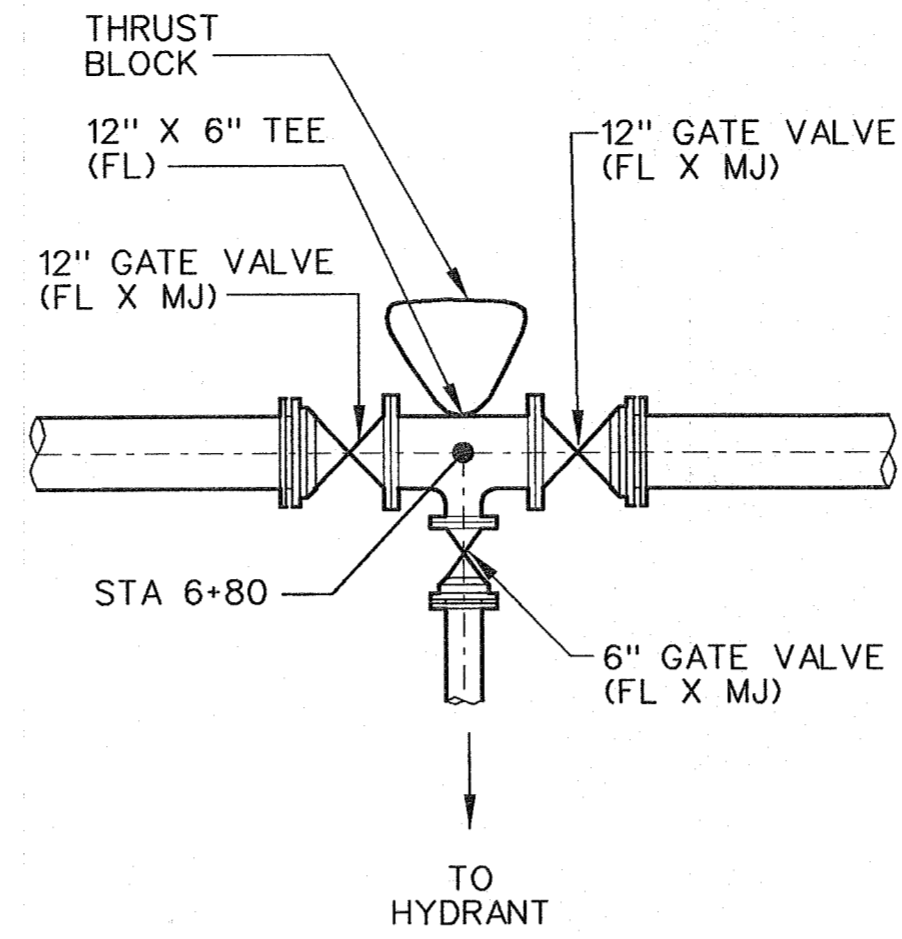
CIVIL
59TH AVE PIPELINE
DETAILS - 1



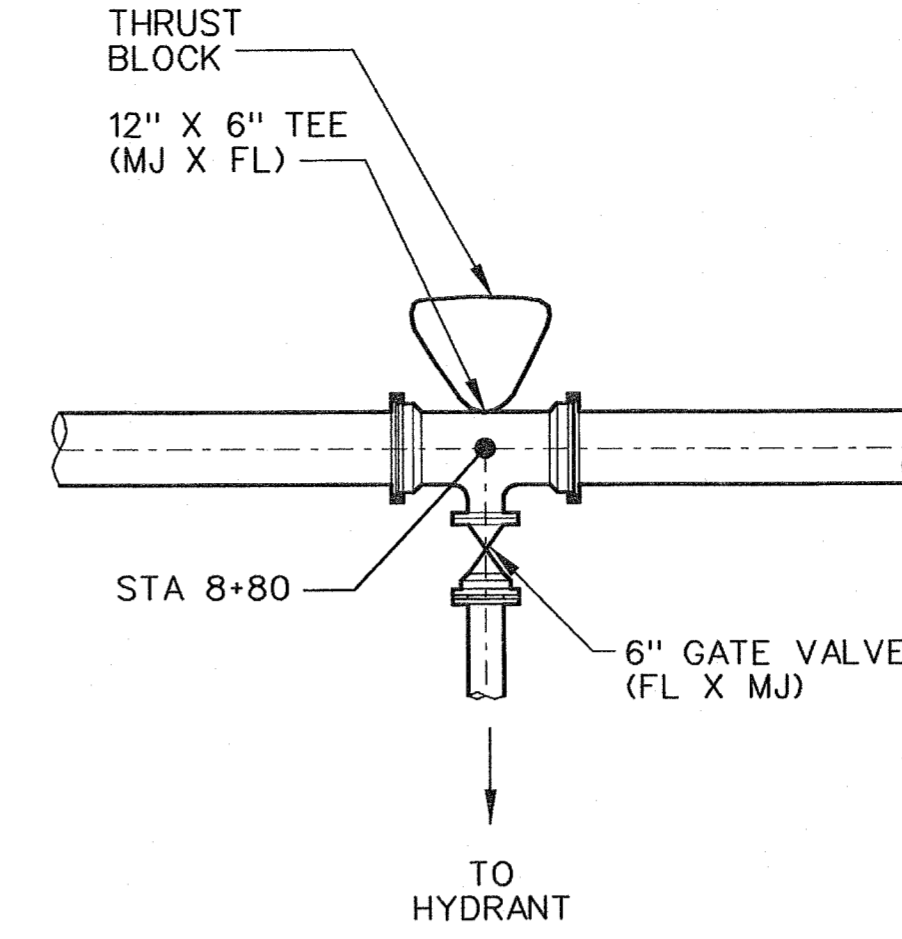
HYDRANT AT STA 3+40 17
 SCALE: 3/8"=1'-0" C-18



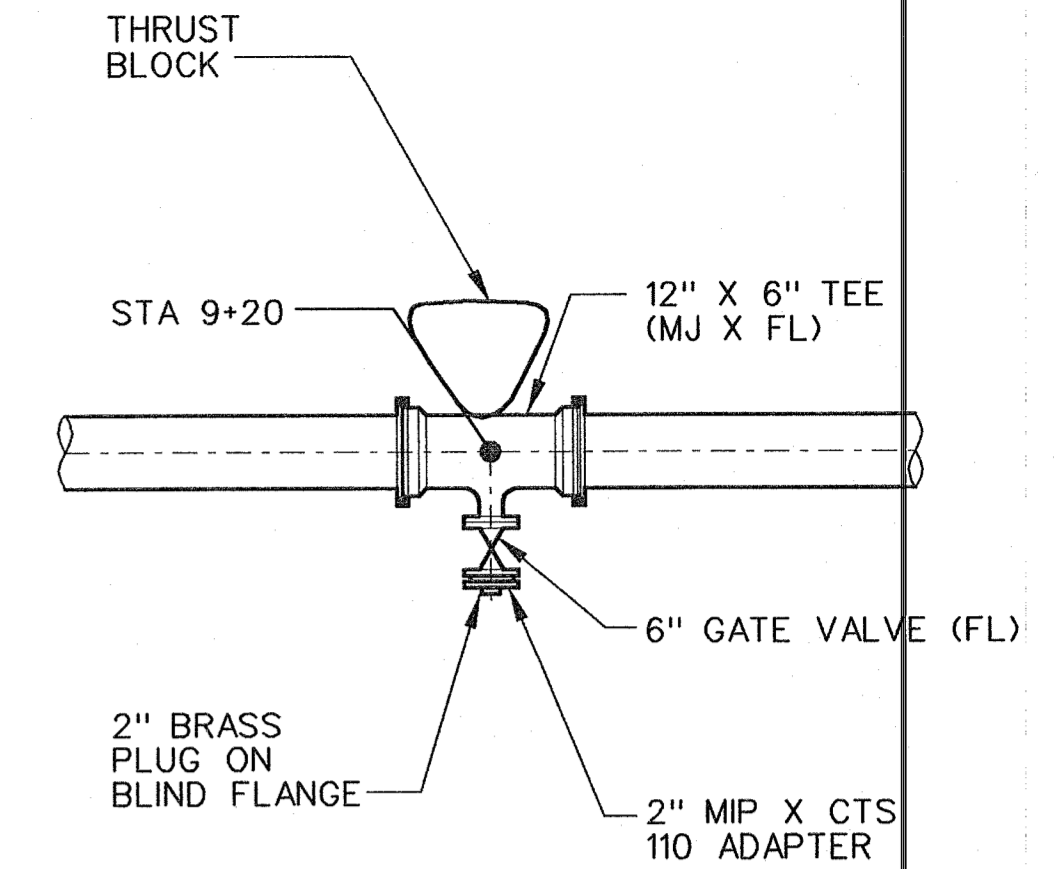
2" WATER SERVICE CONNECTION AT STA 3+68.06
 STA 7+28.55 & STA 9+35.18 18
 SCALE: 3/8"=1'-0" C-18



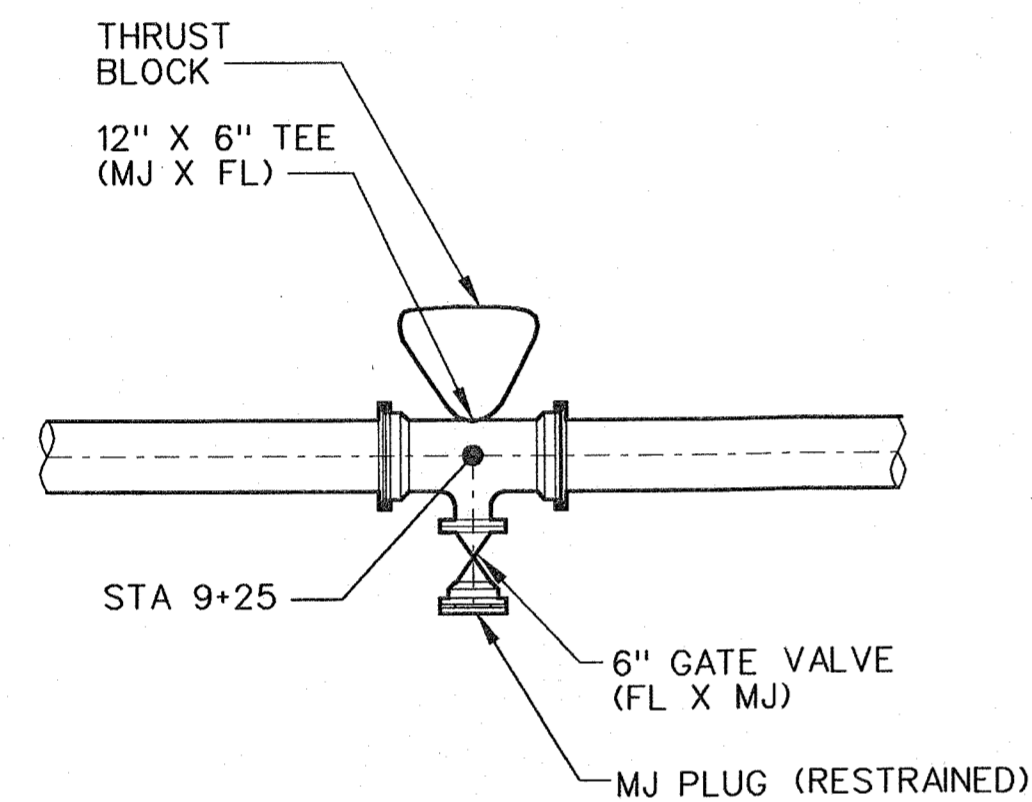
HYDRANT AT STA 6+80 19
 SCALE: 3/8"=1'-0" C-18



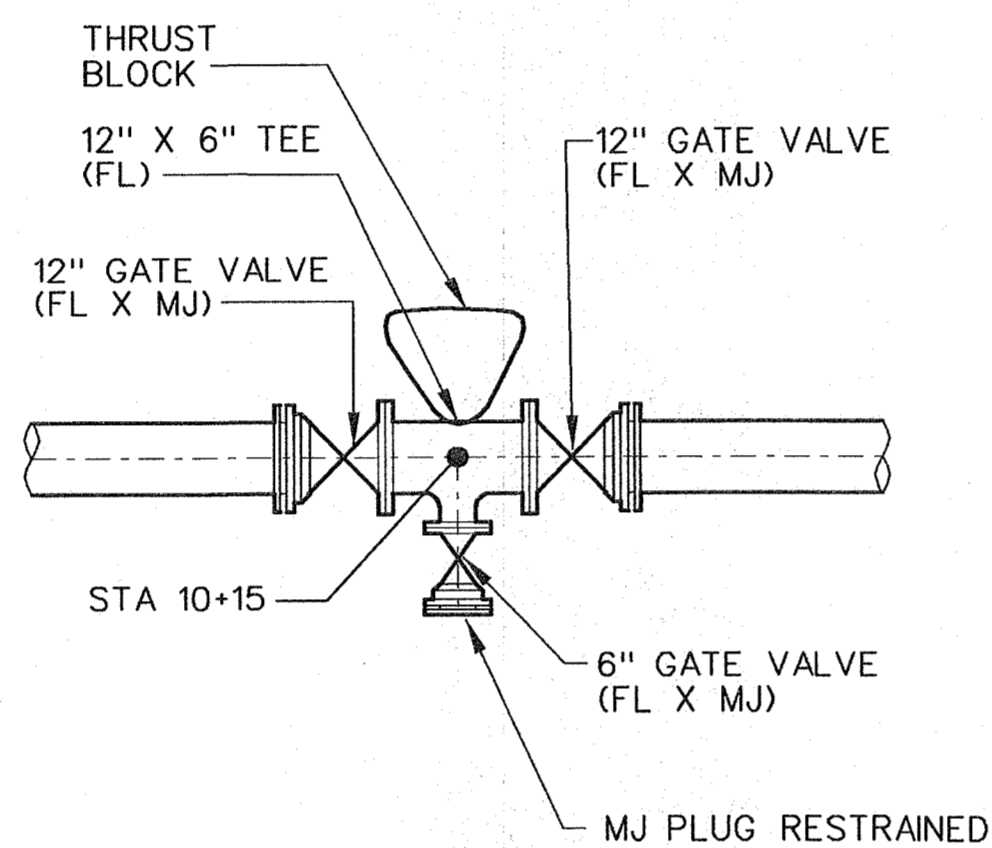
HYDRANT AT STA 8+80 20
 SCALE: 3/8"=1'-0" C-18



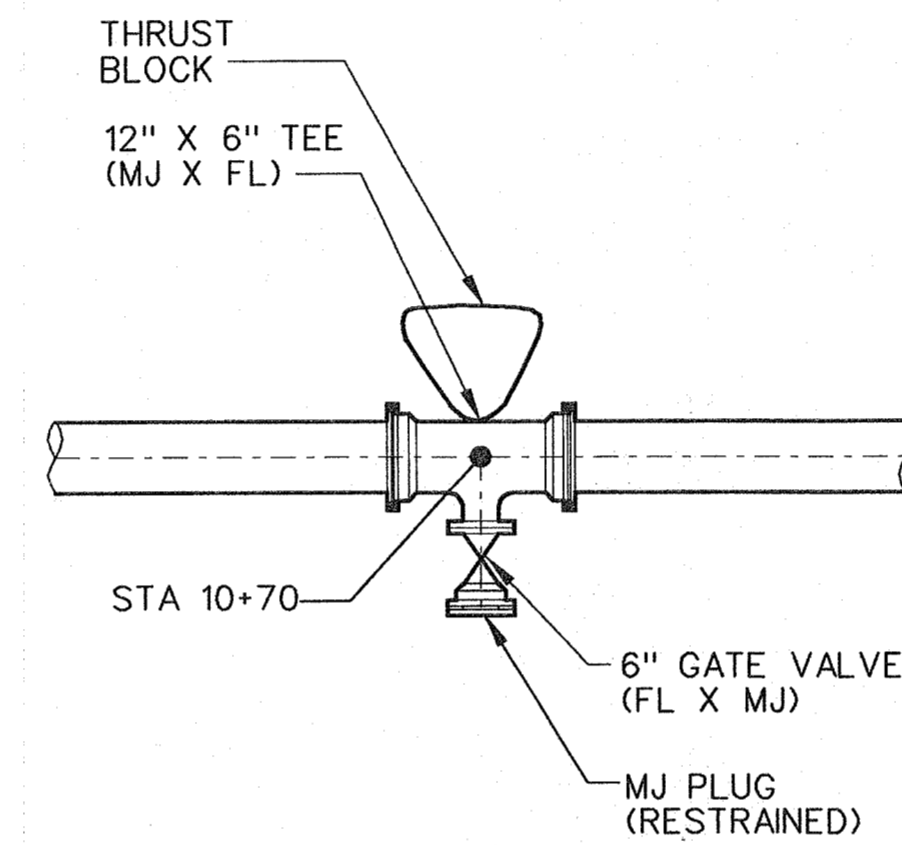
2" FUTURE WATER SERVICE CONNECTION AT STA 9+20 21
 SCALE: 3/8"=1'-0" C-18



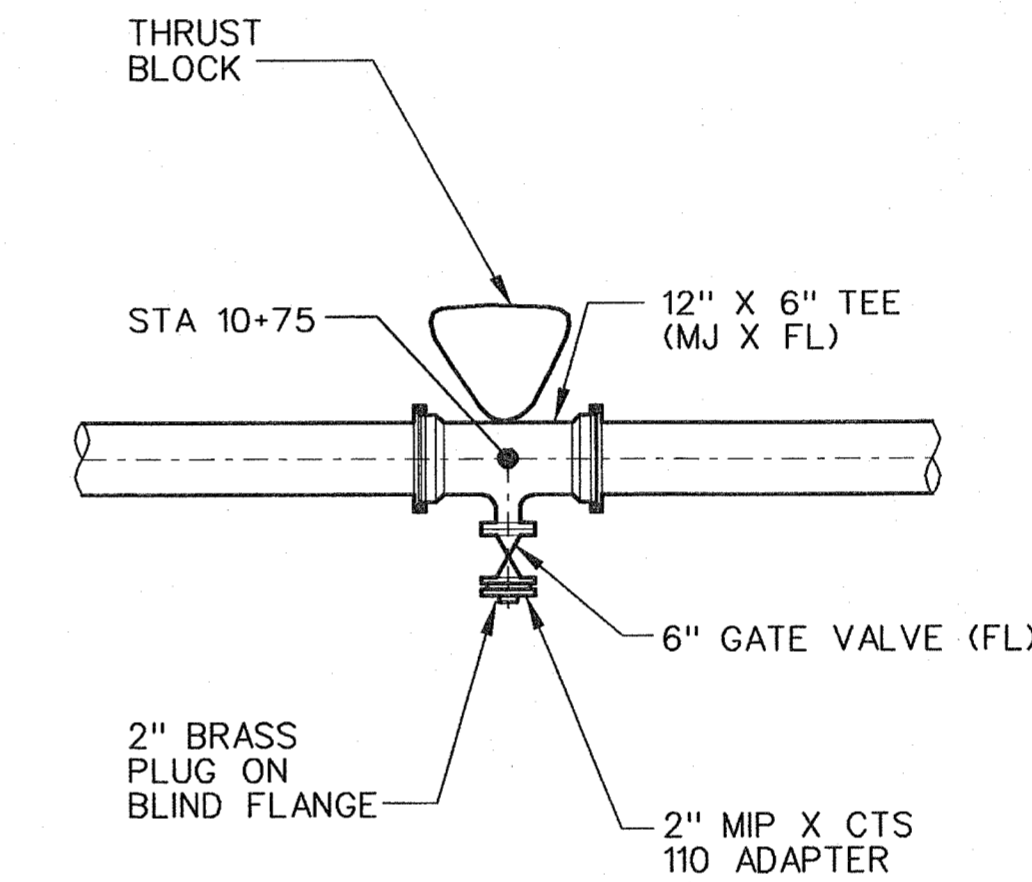
STUB OUT CONN AT STA 9+25 22
 SCALE: 3/8"=1'-0" C-18



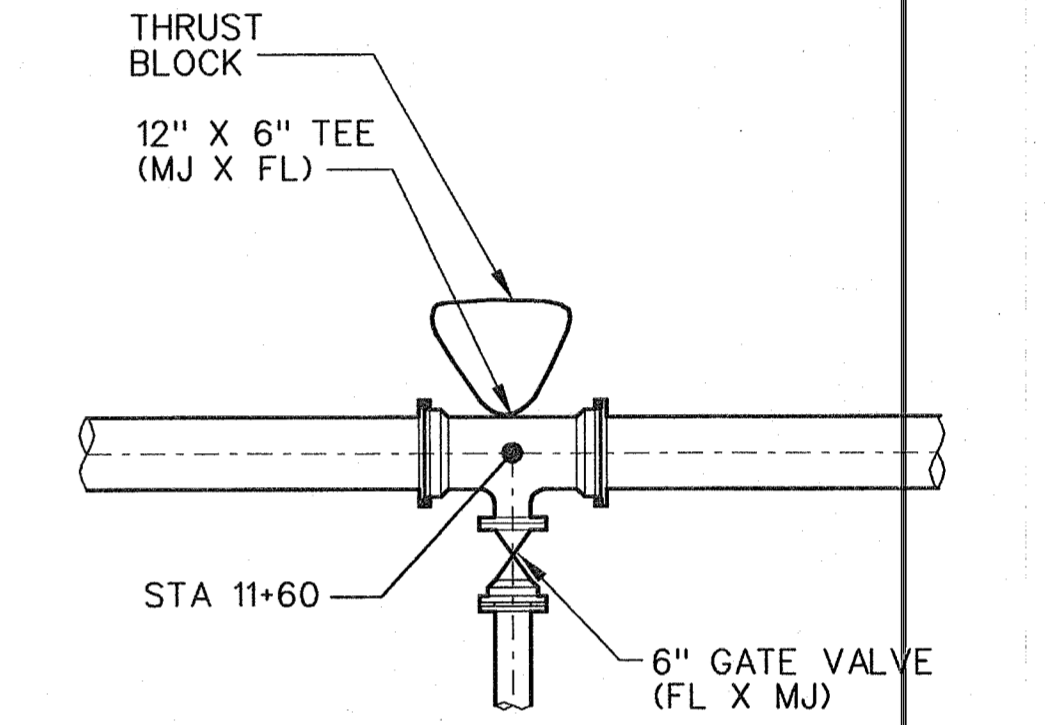
STUB OUT CONN AT STA 10+15 23
 SCALE: 3/8"=1'-0" C-19



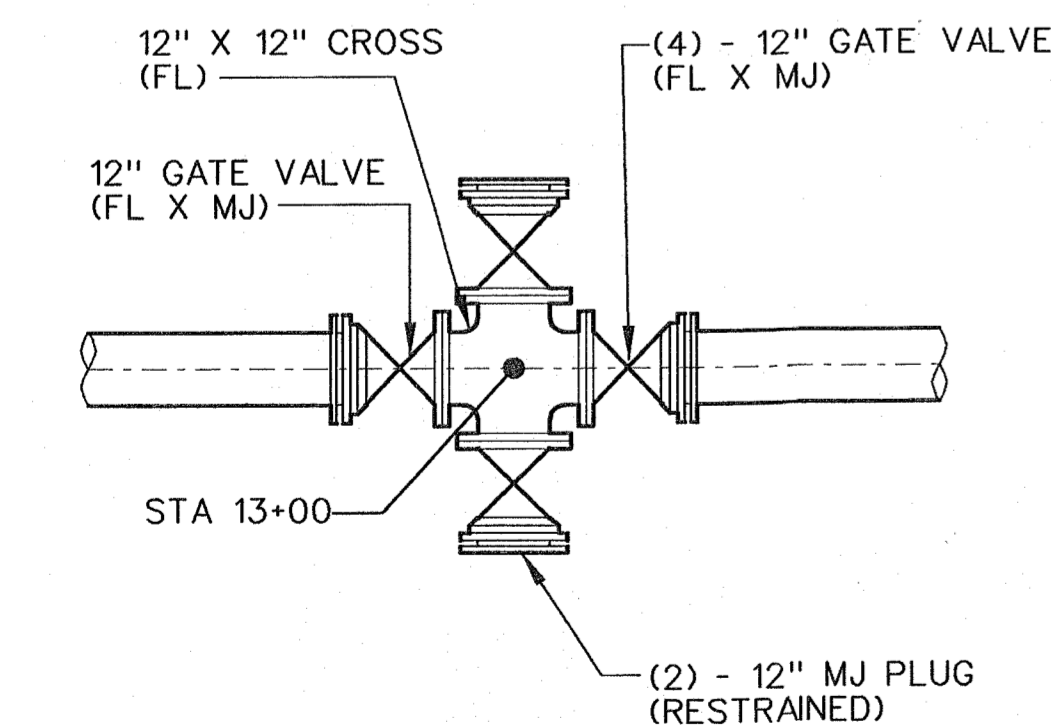
STUB OUT CONN AT STA 10+70 24
 SCALE: 3/8"=1'-0" C-19



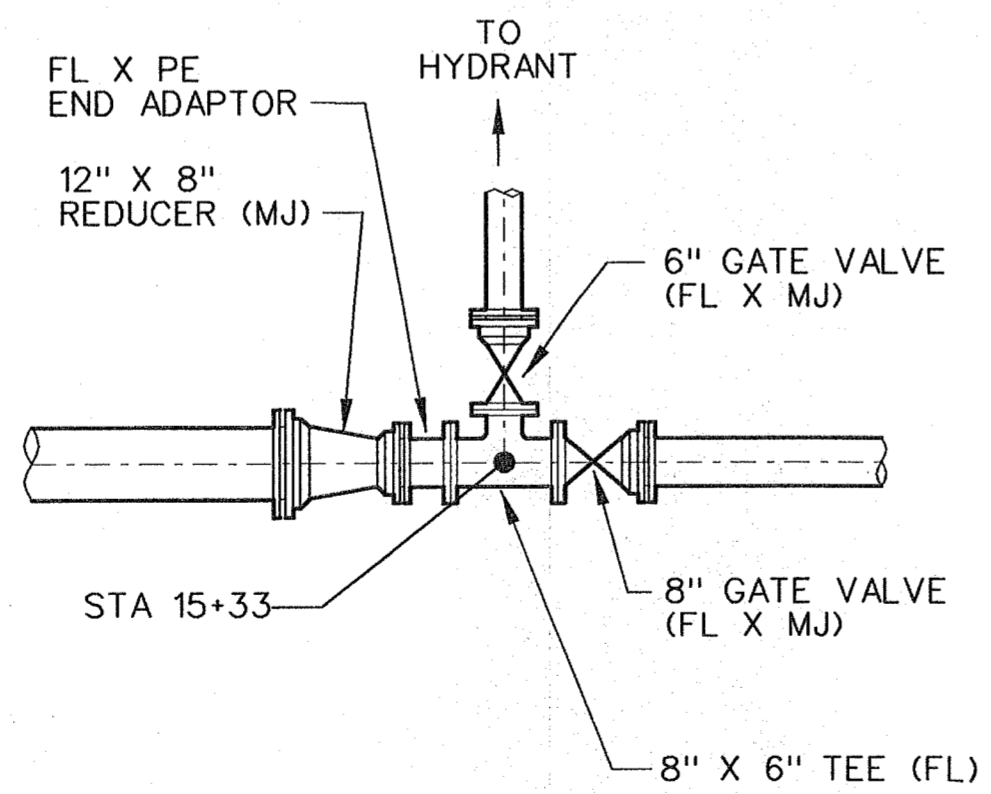
2" FUTURE WATER SERVICE CONNECTION AT STA 10+75 25
 SCALE: 3/8"=1'-0" C-19



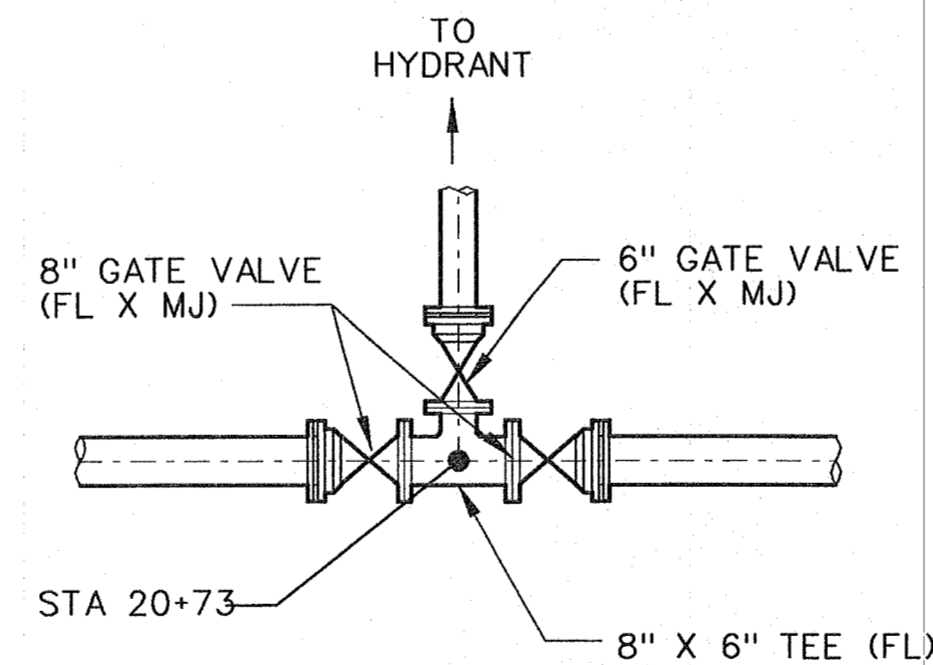
HYDRANT AT STA 11+60 26
 SCALE: 3/8"=1'-0" C-19



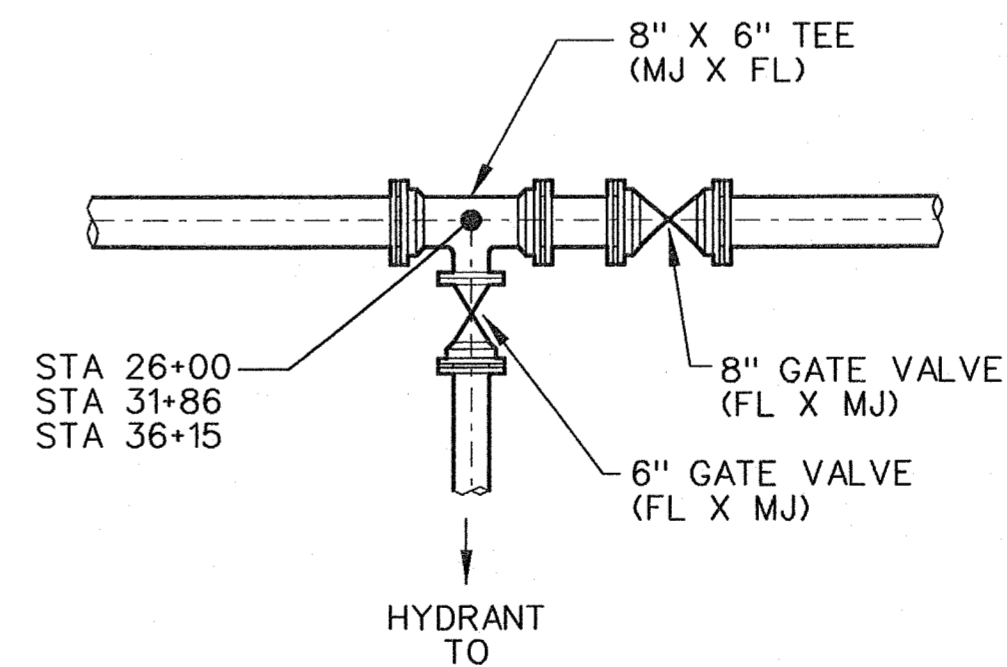
INTERSECTION CONNECTION AT STA 13+00 27
 SCALE: 3/8"=1'-0" C-19



HYDRANT AT STA 15+33 28
 SCALE: 3/8"=1'-0" C-19



HYDRANT AT STA 20+73 29
 SCALE: 3/8"=1'-0" C-19

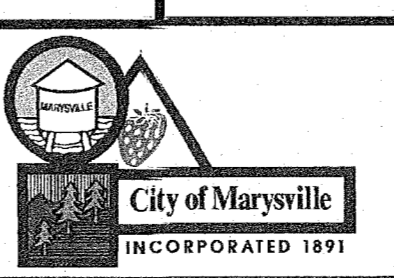
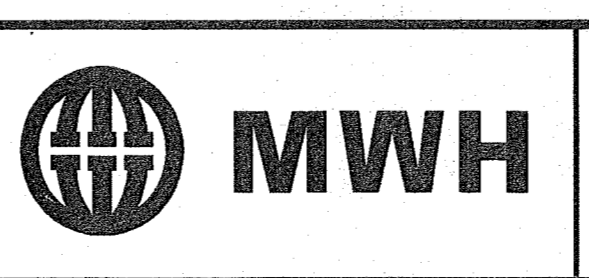


HYDRANT AT STA 26+00
 HYDRANT AT STA 31+86
 HYDRANT AT STA 36+15 30 30
 SCALE: 3/8"=1'-0" C-20 C-21

REV	DATE	BY	DESCRIPTION

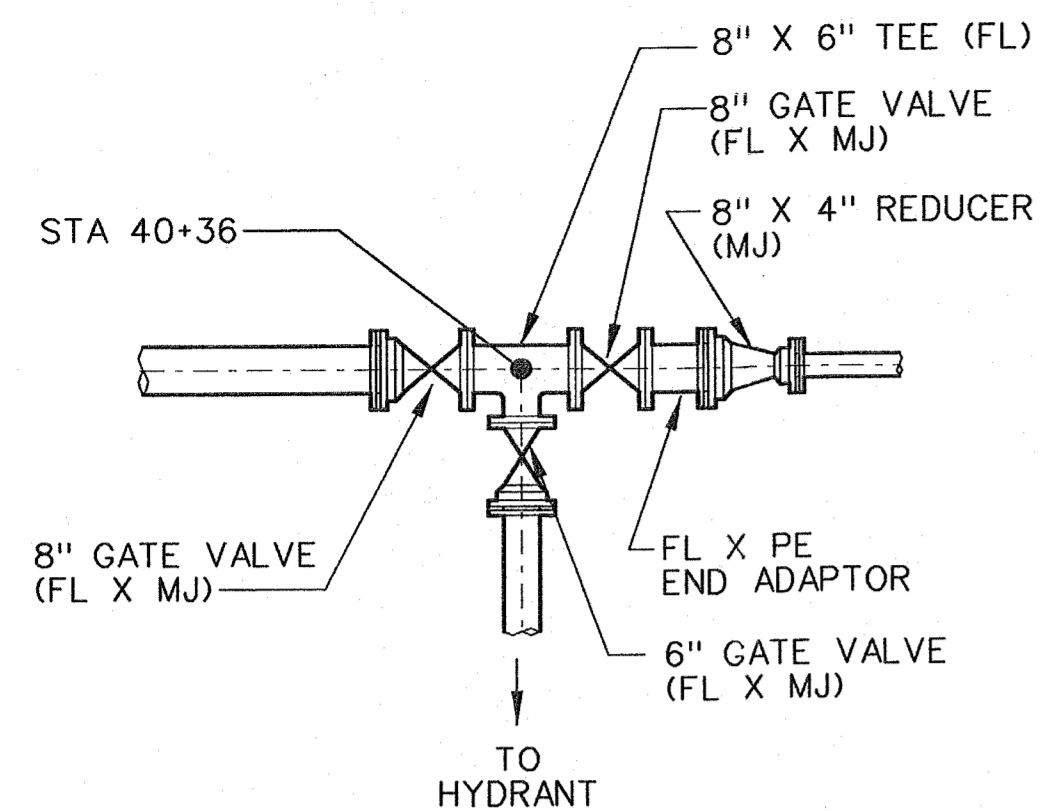
SCALE	AS SHOWN
WARNING	IF THIS BAR DOES NOT MEASURE 1" THEN DRAWING IS NOT TO SCALE
DESIGNED	D WILLIAMS
DRAWN	J SCHULZ
CHECKED	G HARRIS

RECORD DRAWING
 This record drawing has been prepared, entirely or in part on the basis of unverified information compiled and furnished by others to the preparer who is not responsible for any inaccuracies, errors or omissions which may have been incorporated into the document as a result



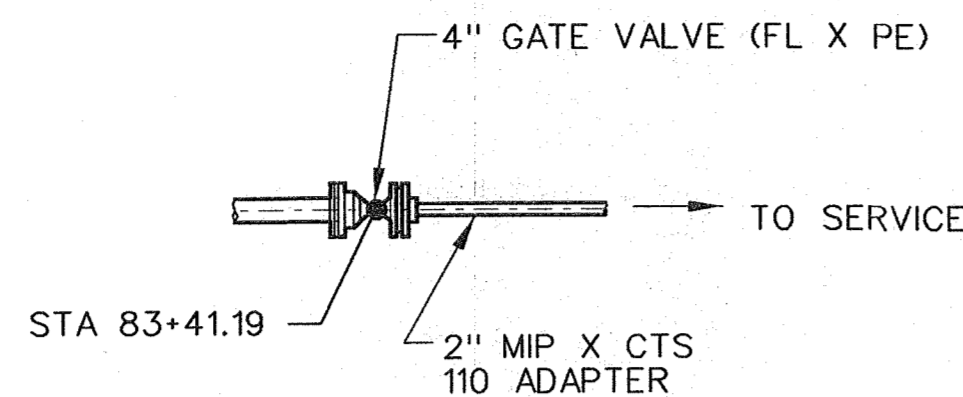
CITY OF MARYSVILLE
 STILLAGUAMISH RIVER
 WTP PROJECT

CIVIL
 59TH AVE PIPELINE
 DETAILS - 2



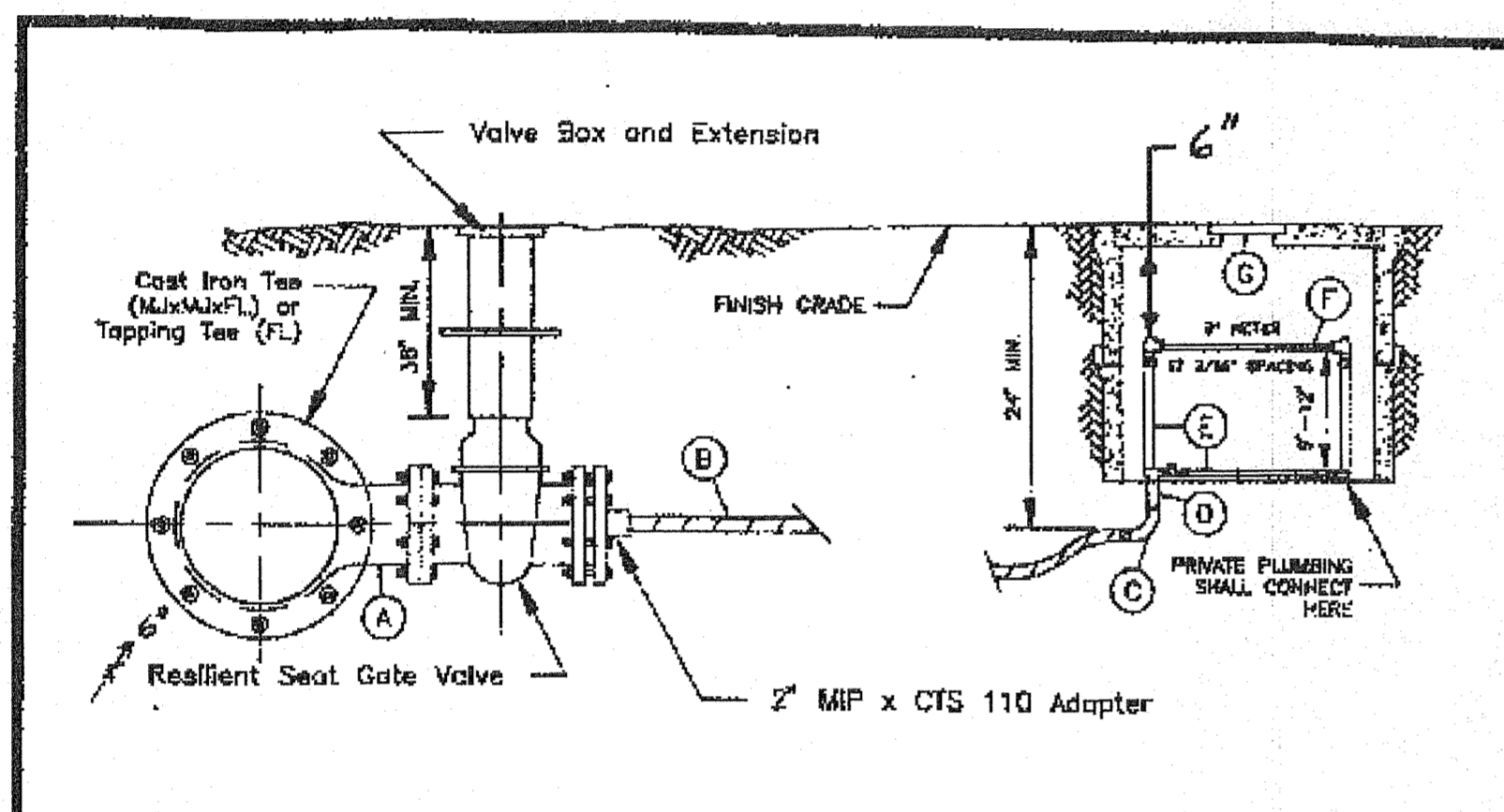
HYDRANT AT STA 40+36
SCALE: 3/8"=1'-0"

32
C-21



2" WATER SERVICE CONNECTION AT STA 83+41.19
SCALE: 3/8"=1'-0"

33
C-25



NOTES:

- Paint hydrant with Case Yellow No. X-3472.
- Use Jags joint restraint system.
- The MJ follows the Mega Leg.
- Paint tie-rods with blue zinc paint according to APWA standards, specification #77-3.02A.
- Install blue pavement marker if hydrant is in right-of-way.
- Red Head 5" Storz to 4 1/2" NST Female Adapter Style No. S-37-MF-L-Storz. Metal face or equal with a Metal face Cap Style No. SC-MP or equal.
- The distance between the nearest point of the hydrant and traffic or the face of the curb shall be a minimum of 24".

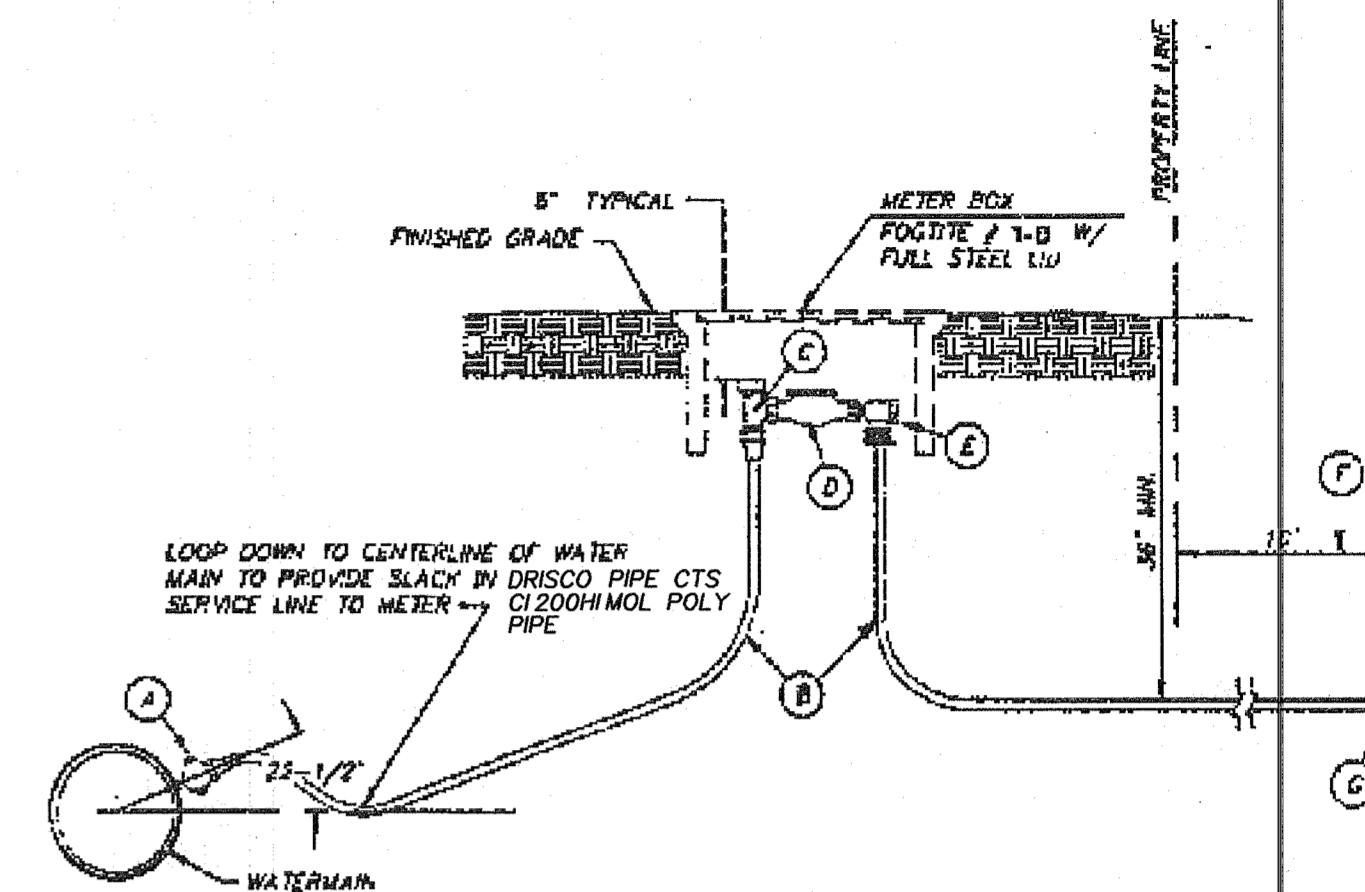
REVISED 5-22-97

FIRE HYDRANT ASSEMBLY



STANDARD PLAN NUMBER

W 1

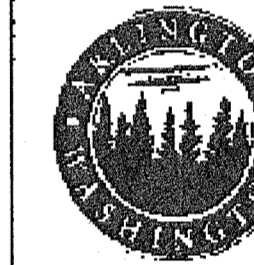


NOTES:

- A. COPPERATION STOP W/CC THREADS FOR COPPER SERVICE EQUAL TO MUELLER CO. H-15025 INSTALLED DIRECTLY INTO DUCTILE IRON WITH (MUELLER H-110 ONLY) FITT x COMP. ADAPTER.
- B. TYPE "K" SOFT COPPER TUBING, OR CTS CL 200 HI MOL POLYPIPE. A #10 COPPER TRACE WIRE IS REQUIRED. CTS CL 200 HI MOL SERVICES SHALL BE 1" MIN. INCLUDING ALL FITTINGS EXCEPT ANGLE METER VALVE AND COUPLINGS WHICH SHALL BE 1"x3/4".
- C. WATER METER STOP WITH LOCK WING FOR COPPER SERVICE EQUAL TO MUELLER CO. H-14255 WITH MUELLER H-110 COMPRESSION FITTINGS
- D. BLANK STUB THE LENGTH OF FUTURE WATER METER. (LENGTH VARIES DEPENDING ON SERVICE SIZE.)
- E. 90° ANGLE CHECK COUPLING W/1 TO ADAPTER.
- F. TYPE "K" COPPER, OR CTS CL 200 HI MOL POLYPIPE W/10 COPPER TRACE WIRE EXTENDED 10' BEYOND PROPERTY LINE.
- G. MUELLER 110 x IPT FEMALE ADAPTER AT END.

REVISED 5-22-97

3/4" and 1" DOMESTIC WATER SERVICE



STANDARD PLAN NUMBER

W 2

- A. MAINLINE SIZE TEE WITH 4" FLANGE AND R.S.G.V. WITH ADAPTER TO SERVICE SIZE.
 - B. 2" CTS CL 200 HI MOL POLY PIPE. A #10 COPPER TRACE WIRE IS REQUIRED.
 - C. 2" STREET E.L. BRASS, MALE IRON PIPE THREAD BY IRON PIPE THREAD.
 - D. 2" NIPPLE, BRASS, M.F.T. X M.F.T., 6" LONG OR AS REQUIRED TO MEET PROPER GRADE.
 - E. 2" BRASS AND COPPER METER SETTER: BALL VALVE ON INLET AND OUTLET BALL VALVE ON BYPASS PADLOCK WINGS ON ALL VALVES VERICAL INLET AND OUTLET MUELLER H 1423-2, 2012 W/V, OR EQUAL
 - F. RIGID METER SPREADER TO BE INSTALLED BY CONTRACTOR.
 - G. USE MID-STATE METER BOX 1720-18 W/DURICE LIT WITH 7/2 PL HOLE 1-3/4 AND REDUCER LIT
- NOTES:
1. SERVICE LINE SHALL BE PERPENDICULAR TO THE WATER MAIN UNLESS OTHERWISE APPROVED BY THE ENGINEER.
2. BYPASS WILL BE LOCKED OFF BY CONSTRUCTION INSPECTOR WHEN METER SPREADER IS INSTALLED.
3. 1 1/2" TO 4" WATER SERVICE REQUIRES A 4" TEE WITH R.S.G.V. AND VALVE BOX.

REVISED

2" DOMESTIC WATER SERVICE



STANDARD PLAN NUMBER

W 10

GENERAL R/W USE RESTORATION REQUIREMENTS

- AT THE ENGINEER'S DISCRETION, PRIOR TO COMMENCING ANY CONSTRUCTION, PHOTOGRAPHS DEPICTING PRE-EXISTING ROADWAY CONDITIONS WILL BE REQUIRED EVERY 50 FEET IN PAVED AREAS OR ANY OTHER LOCATION AS SPECIFIED BY THE ENGINEER.
- SIGNING, FLAGGING AND TRAFFIC CONTROL SHALL BE IN ACCORDANCE WITH THESE STANDARDS, THE WSDOT TRAFFIC MANUAL AND THE MANUAL OF UNIFORM TRAFFIC CONTROL DEVICES.
- ONE LANE OF TRAFFIC SHALL REMAIN OPEN AT ALL TIMES, ATTENDED BY FLAGMEN AND APPROPRIATED CONSTRUCTION SIGN PROVIDED. THE ROAD SHALL BE RESTORED TO TWO-WAY TRAFFIC AT THE END OF EACH WORKING DAY. APPLICATIONS FOR TOTAL ROAD CLOSURES MUST BE FILED WITH SNOHOMISH COUNTY PUBLIC WORKS AT LEAST 5 DAYS PRIOR TO THE ANTICIPATED CLOSURE.
- EXISTING DRAINAGE DITCHES, CULVERTS, ETC., SHALL BE KEPT CLEAN AT ALL TIMES. TEMPORARY DIVERSION OF ANY DRAINAGE SYSTEM WILL NOT BE PERMITTED WITHOUT THE CONSENT OF THE ENGINEER. ANY DRAINAGE CULVERT, CATCH BASIN, MANHOLE OR OTHER DRAINAGE STRUCTURE DISTURBED BY EXCAVATION SHALL BE REPLACED WITH NEW MATERIAL OR REPAIRED TO THE SATISFACTION OF THE ENGINEER. TEMPORARY EROSION/SEDIMENTATION CONTROL MEASURES SHALL BE EMPLOYED TO PROTECT ADJACENT PROPERTY AND STORM DRAINAGE FACILITIES.
- GRAVEL SHOULDERS DISTURBED BY EXCAVATION SHALL BE SHAPED TO COUNTY STANDARDS AND PROVIDED WITH A MINIMUM OF 6 INCHES COMPACTED CRUSHED SURFACING TOP COURSE.
- IF IN THE OPINION OF THE ENGINEER, WEATHER CONDITIONS DETERIORATE TO THE POINT WHERE THE TRAVELED ROADWAYS ARE UNSAFE FOR THE PUBLIC OR DETRIMENTAL TO THE RESTORATION OF THE ROADWAY, EXCAVATION SHALL CEASE IMMEDIATELY AND CLEANUP SHALL BE PROMPTLY ACCOMPLISHED.
- ALL PIPE OR OTHER MATERIAL STORED ALONG COUNTY RIGHT-OF-WAY MUST BE PLACED AT A SAFE DISTANCE FROM THE TRAVELED ROADWAY IN SUCH A MANNER AS TO AVOID FALLING ONTO THE ROADWAY.
- NO EXCESS OR UNSUITABLE MATERIAL SHALL BE WASTED ON COUNTY RIGHT-OF-WAY. ANY SUCH MATERIAL DUMPED ON PRIVATE PROPERTY MAY REQUIRE A GRADING PERMIT. VERIFICATION WITH SNOHOMISH COUNTY PLANNING & DEVELOPMENT SERVICES IS REQUIRED.
- STREET SURFACES SHALL BE CLEANED AT THE END OF EACH DAY'S OPERATION WITH A POWER BROOM OR OTHER APPROVED MEANS.
- NO OPEN CUT CROSSING OR COUNTY ROADS OR STREETS SHALL BE MADE WITHOUT THE APPROVAL OF THE ENGINEER.
- MAXIMUM AMOUNT OF OPEN TRENCH IN ROADS SHALL BE 400 LINEAL FEET. AT THE END OF EACH DAY, ALL DITCHES MUST BE BACKFILLED OR COVERED WITH STEEL PLATES AND BARRICADED WITH FLASHING WARNING LIGHTS TO PREVENT PEOPLE OR ANIMALS FROM FALLING INTO THE TRENCH.
- FINAL CLEANUP INCLUDING COMPLETE RESTORATION OF SHOULDERS, CLEANING OF DITCHES, CULVERTS AND CATCH BASINS, AND REMOVAL OF LOOSE MATERIAL FROM BACK SLOPES OF DITCHES SHALL NOT EXCEED 1500 L.F. BEHIND EXCAVATION OPERATIONS OR AS REQUIRED BY THE ENGINEER.

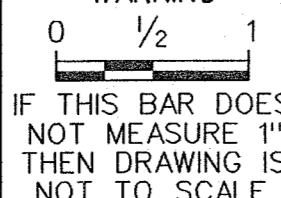
SNOHOMISH COUNTY PUBLIC WORKS

8-040 GENERAL R/W RESTORATION REQUIREMENTS

2-16-06 CRM RECORD DRAWINGS

SCALE

WARNING



AS SHOWN

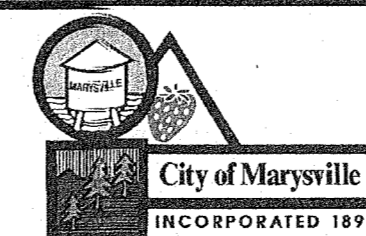
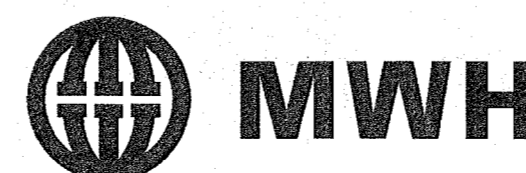
DESIGNED D WILLIAMS

DRAWN J SCHULZ

CHECKED G HARRIS

RECORD DRAWING

This record drawing has been prepared, entirely or in part on the basis of unverified information compiled and furnished by others to the preparer who is not responsible for any inaccuracies, errors or omissions which may have been incorporated into the document as a result



CITY OF MARYSVILLE
STILLAGUAMISH RIVER
WTP PROJECT

CIVIL

59TH AVE PIPELINE
DETAILS - 3

SHEET

C-29

47 OF 134