

PANEL HV-1		225A		BUS 60A MLO	
A	P	DESCRIPTION	A	P	DESCRIPTION
20	3	CLEARWATER PANEL	50	2	25 KVA TRF
20	3	CLEARWATER PANEL	50	2	25 KVA TRF
20	3	CLEARWATER PANEL			SPACE
30	3	HEATER OUTLET			
30	3	HEATER OUTLET			
30	3	HEATER OUTLET			
		SPACE			

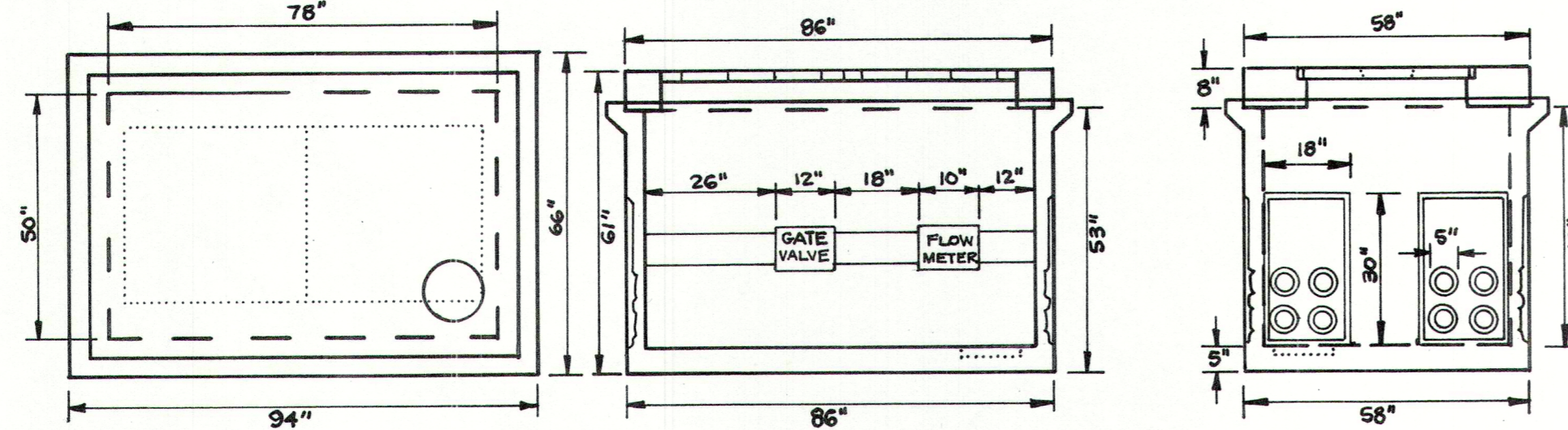
PANEL LV-1		70A M. BKR.			
A	P	DESCRIPTION	A	P	DESCRIPTION
20	2		20	2	SPARE
20	2		20	2	SPARE
40	1	5 & L DRY WELL	20	1	RECEP-N WALL
20	1	RECEP-BELOW PNL	20	1	HOUSE LTG
		SPACE	20	1	WET WELL BLOWER
			20	1	WET WELL LTG
			20	1	LOUVER MTRS
			20	1	GFI - OUTSIDE
					SPACE

**TRANSDUCER SETTINGS**

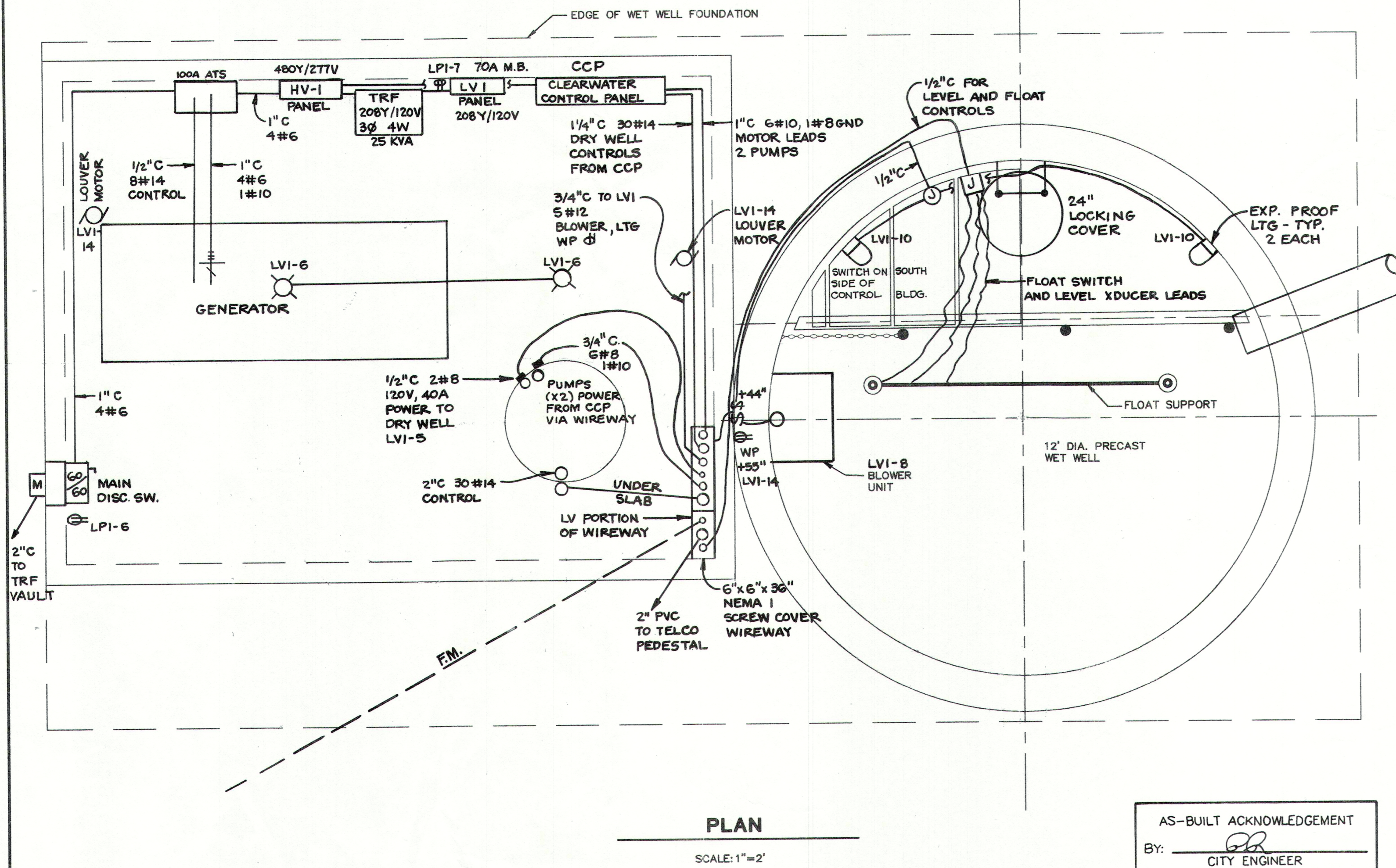
SETTING	ELEV.	SETTING	ELEV.
LEAD PUMP ON	104.58		
LAG PUMP ON	105.33		
HIGH WATER ALARM	106.67		
BOTH PUMPS OFF	103.16		
LOW WATER ALARM/SHUTOFF	101.67		

FINAL BASIN SETTINGS, ADJUST FOR EARLY LOW FLOWS.

- CONCRETE: 28 DAY COMPRESSIVE STRENGTH C'c = 4000 psi
- REBAR: #4 ASTM A-615 GRADE 60
- MESH: ASTM A-185 GRADE 66
- DESIGN: ASTM C-857 "MINIMUM STRUCTURAL DESIGN LOADING FOR UNDERGROUND PRECAST CONCRETE UTILITY STRUCTURES"
- LOADS: 100 TRUCK WHEEL W/ 30% IMPACT PER AASHTO
- REINFORCING PLACEMENT: 4x4 1/4 GAUGE THROUGHOUT W/ 2-#4 BARS ALONG BELL JOINTS
- JOINT MATERIAL: MEETS FEDERAL SPECS.
- SS-S-00210, AASHTO M-1988 AND ASTM C990
- HATCHES PER DISTRICT SPECIFICATIONS



**DETAIL FLOW METER VAULT**  
NOT TO SCALE



**PLAN**

SCALE: 1"=2'

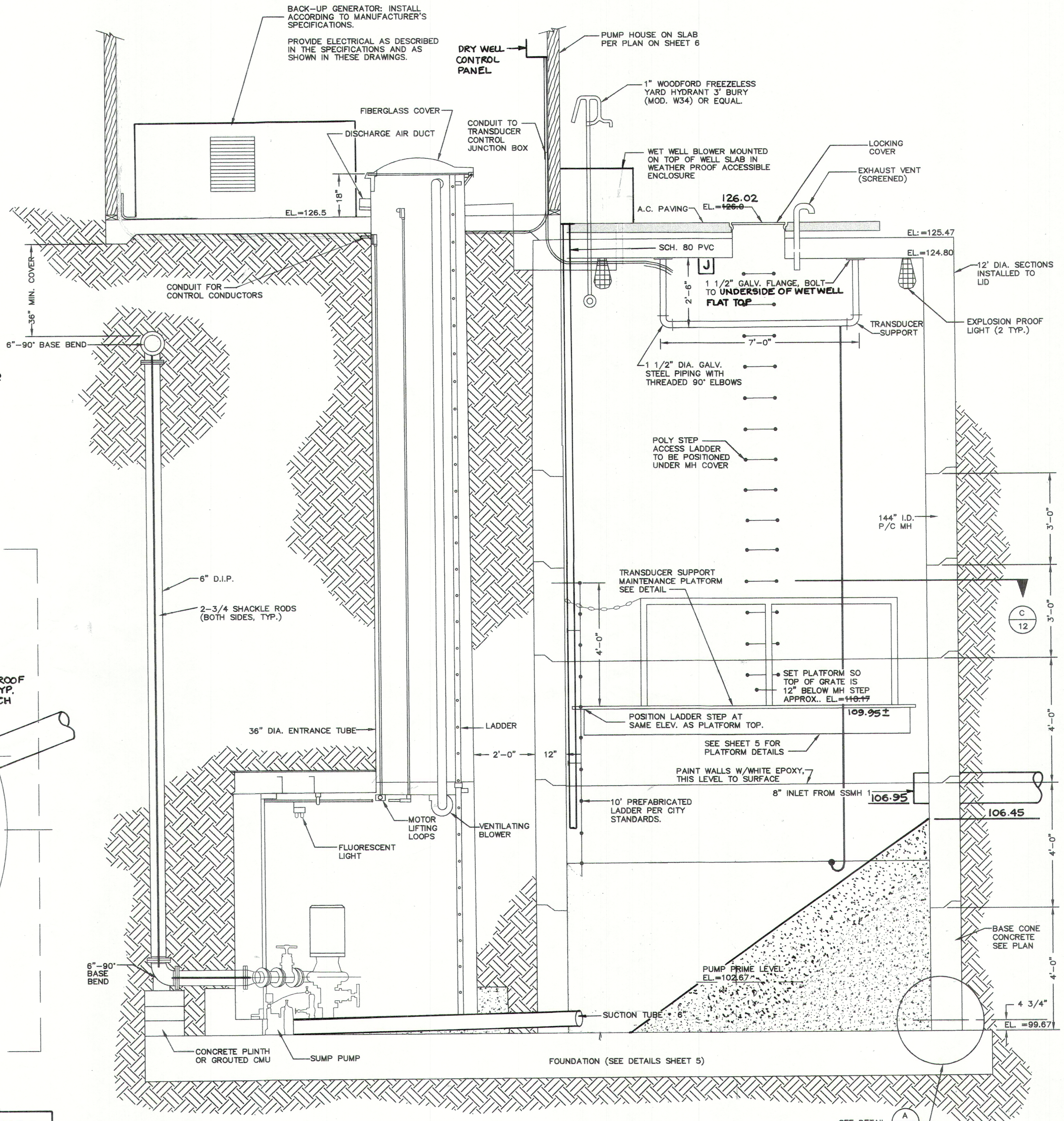
AS-BUILT ACKNOWLEDGEMENT

BY: *[Signature]*  
CITY ENGINEER

DATE: 1/8/04

CITY OF ARLINGTON  
DEPARTMENT OF PUBLIC WORKS  
**APPROVED FOR CONSTRUCTION**  
*(Modification is possible during construction)*

BY: *[Signature]*  
DATE: 4/30/01

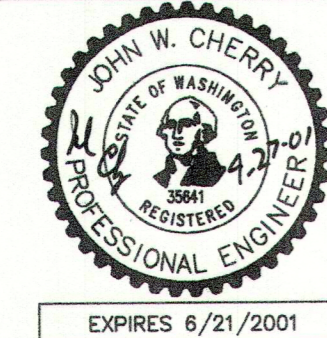


**8' DIA. SMITH AND LOVELESS PUMPING STATION**

SCALE: 1"=2'



1721 Hewitt Avenue, Suite 401  
Everett, WA 98201  
(425) 252-2826 fax: 252-9551



**NOTE**

THE CONTRACTOR SHALL VERIFY THE LOCATION OF ALL EXISTING UTILITIES PRIOR TO ANY CONSTRUCTION. AGENCIES INVOLVED SHALL BE NOTIFIED WITHIN A REASONABLE TIME PRIOR TO THE START OF CONSTRUCTION.

DATE	REVISIONS	BY:	ISSUE DATE:
4/5/01	PER CITY REVIEW	JWC	DEC. 11, 2000
7/09/02	AS-BUILT	PCM	DESIGNED BY: JWC
7/02/03	AS-BUILT PER SEASON AND ROGERS ELECTRIC MARKUPS	PCM	DRAWN BY: RFA
			PLAN CHECK BY: JWC
			1ST SUBMITTAL: 1/19/01
			2ND SUBMITTAL: 4/06/01

**CONSTRUCTION PLANS FOR  
CROWN PARK, L.L.C.  
SEWER EXTENSION PLAN  
NOTES AND DETAILS**

JOB NO.  
**1448**

**11**  
**14**