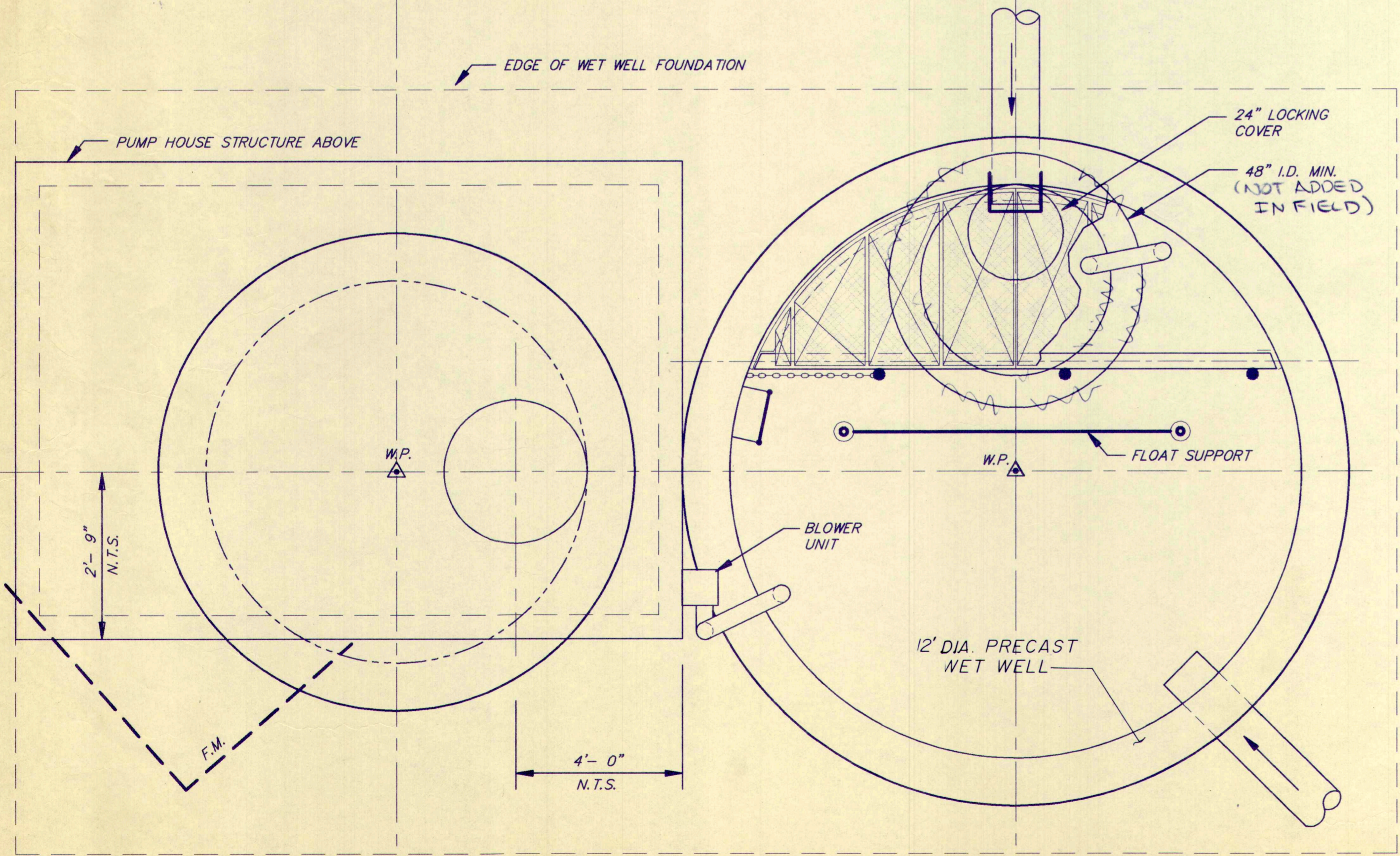
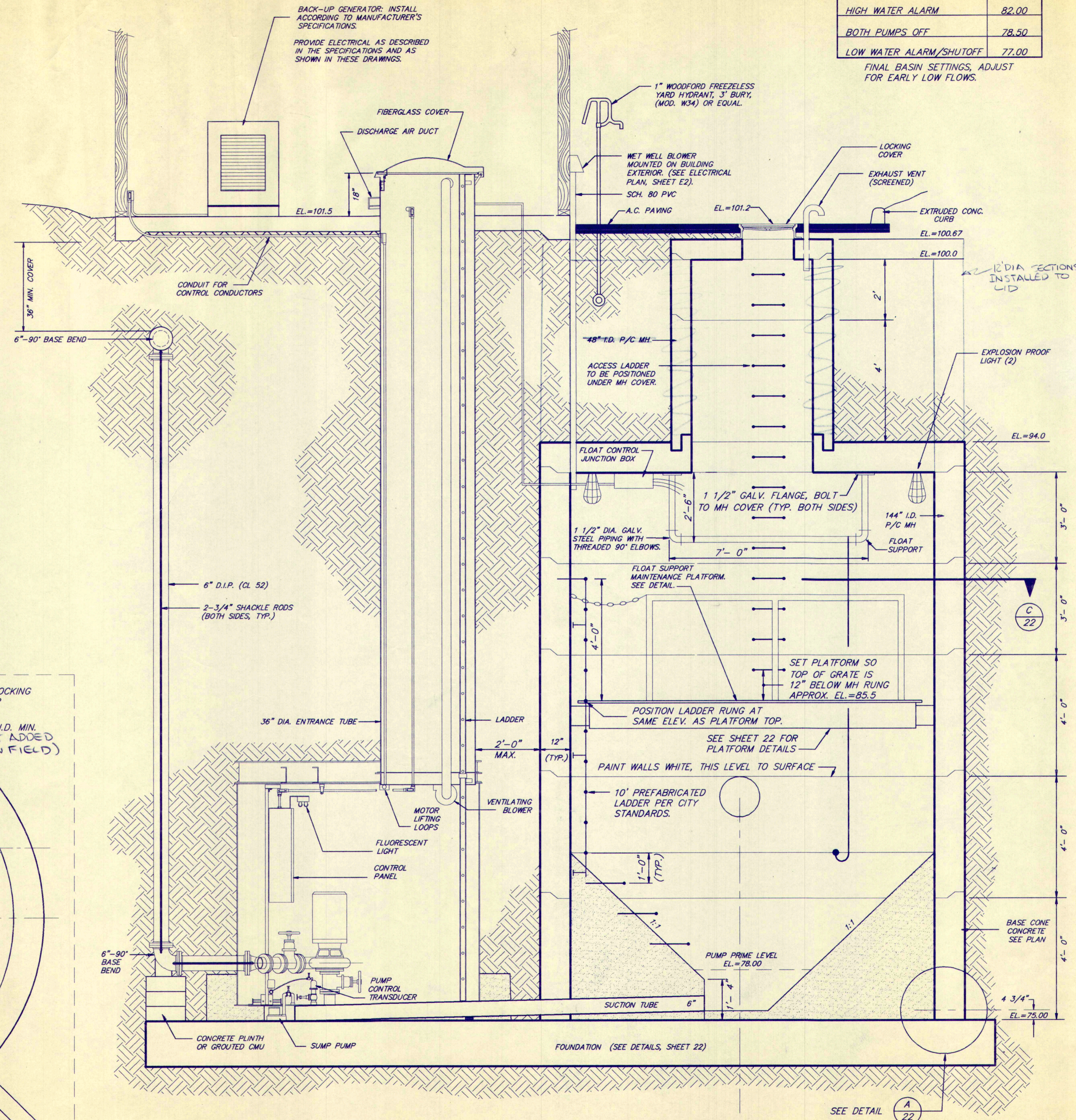


Lift station 7

FLOAT CONTROL SETTINGS	
LEAD PUMP ON	ELEV. 80.50
LAG PUMP ON	81.50
HIGH WATER ALARM	82.00
BOTH PUMPS OFF	78.50
LOW WATER ALARM/SHUTOFF	77.00

FINAL BASIN SETTINGS, ADJUST FOR EARLY LOW FLOWS.



8' DIA. DUPLEX PUMPING STATION

1/2" = 1'-0"

SEE DETAIL A 22
 L5-7

PLAN

1/2" = 1'-0"

SEE SHEET 23 FOR SITE LOCATION



AS CONSTRUCTED
 DATE: OCT 95 PJD

APPROVED FOR CONSTRUCTION
 CITY OF ARLINGTON

Signature: *Bruce J. Dodds*
 DATE: 2-03-95

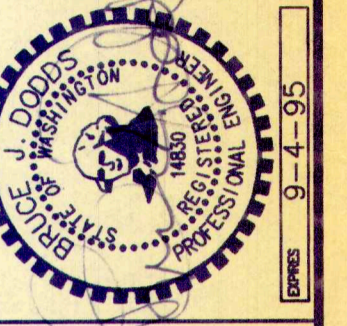
DATE MAY 1994
 DESIGNED R.H. STEVENS
 DRAWN L.C. WIGHT
 APPROVED
 BRUCE J. DODDS, P.E.
 PROJECT MANAGER

SHEET 21 OF 25

PROJECT NUMBER
 90055

DODDS ENGINEERS, INC.
 CIVIL ENGINEERING SURVEYING PLANNING
 4205-148TH AVE. N.E. - SUITE 200
 BELLEVUE, WASHINGTON 98007
 [206] 865-7877 OR 454-3743

PUMP STATION PLAN
 THE PLAT OF HIGH CLOVER PARK
 THE HIGH CLOVER PARTNERS
 4205 148TH AVE. N.E., SUITE 200
 BELLEVUE, WASHINGTON 98007
 L5# 7



NO.	REVISIONS	DATE