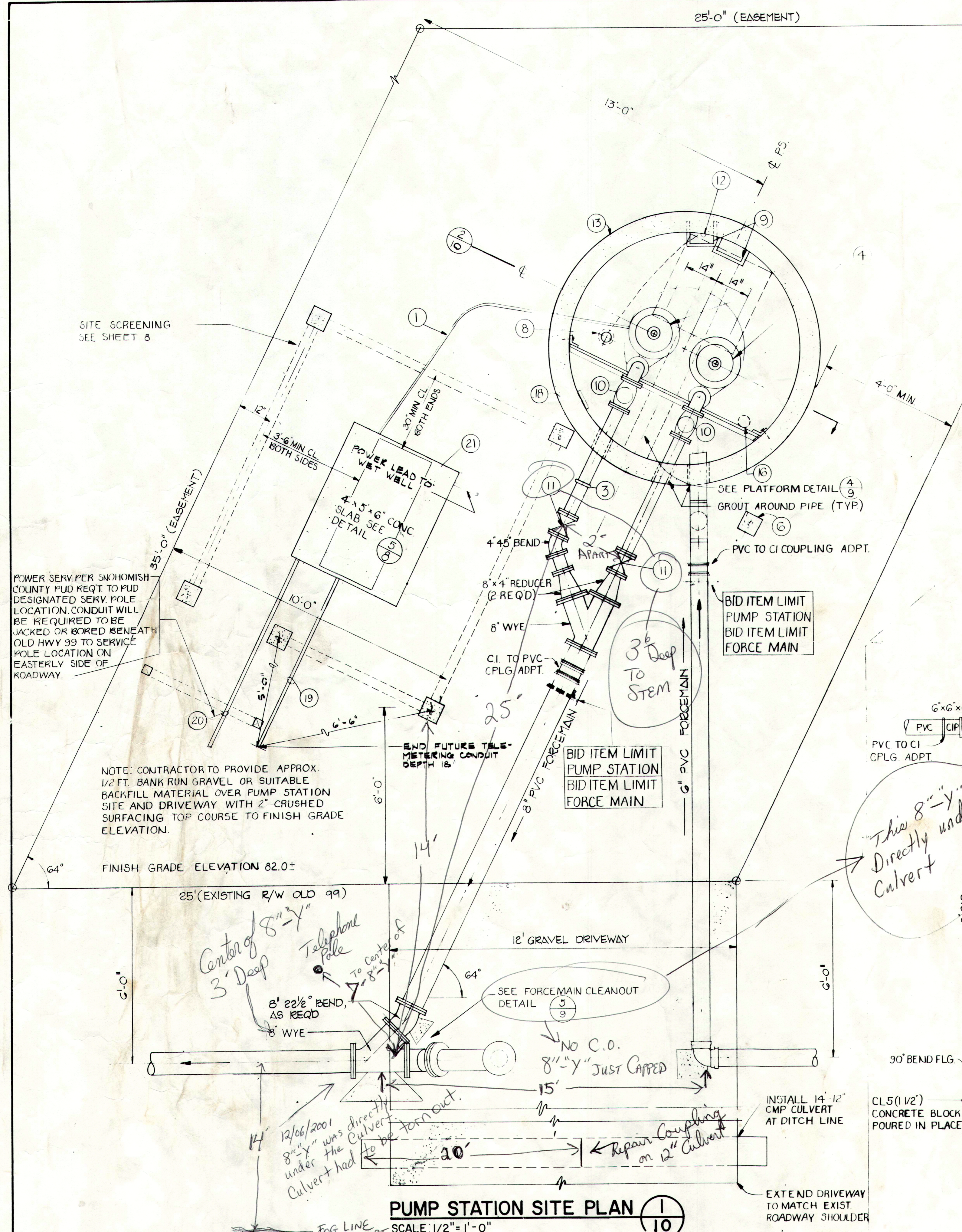


KEYED NOTES

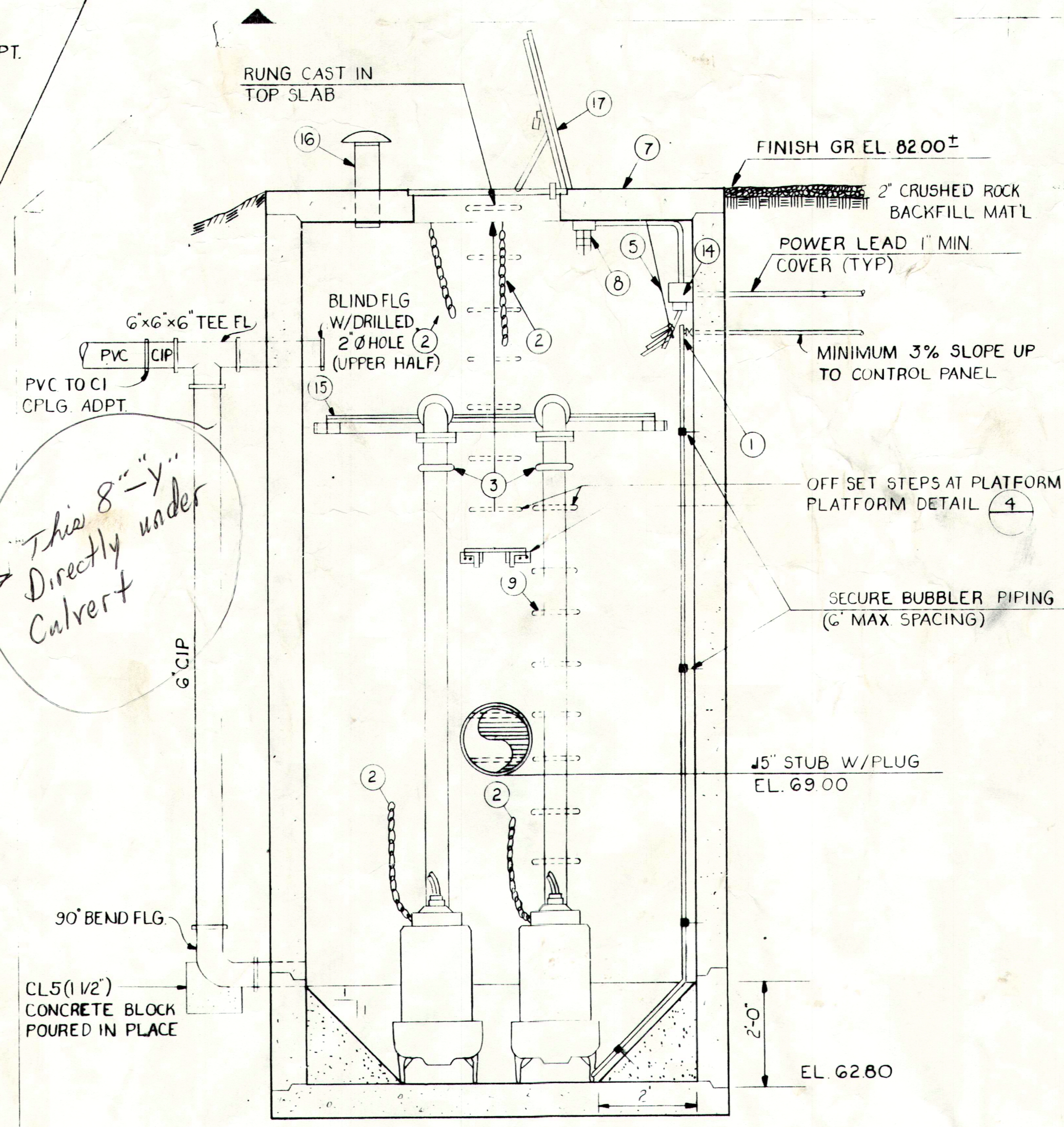
- 1 BUBBLER PIPING AND TUBING, 1/2" GALV., 1/2" GLOBE VALVE, 1/2" TEE W/PLUG INSIDE STA. 1/4" COPPER TUBING ON CONTINUOUS UP GRADE STA. TO CONTROL PANEL
- 2 PUMP LIFT CHAIN - 3/8" PROOF COIL W/DOUBLE BOLT WROUGHT IRON PIPE CLAMP, GALV. HOOD AND EYEBOLT SECURED TO TOP OF WET WELL, HOT DIPPED GALV.
- 3 4" GALVANIZED STYLE 7A "VICTAURIC" SNAP ON COUPLING, OR EQUAL
- 4 25 H.P. PUMP - SEE SPECS
- 5 USF "KELLEMS" TYPE 024-03-01X, OR EQUAL, STANDARD SUPPORT GRIPS WITH SINGLE U EYE ROD. USE ONE FOR EACH GROUP OF MOTOR WIRES. USE EYE BOLT ANCHOR INDEPENDENT OF RECEPTACLES. MATERIAL TO BE STAINLESS STEEL.
- 6 CONCRETE GUARD POSTS - 8" X 8" X 6'-0" TO BE PLACED AROUND CONTROL ENCLOSURE AND PUMP STATION
- 7 112" Ø PRECAST TOP SLAB W/3'-0" X 3'-0" ACCESS OPENING OFF CENTER AS INDICATED
- 8 VAPOR TIGHT LIGHT FIXTURE
- 9 GALV. STEEL LADDER A.P.W.A. STD. PLAN NO. 41
- 10 4" CHECK VALVES
- 11 4" GATE VALVES
- 12 1 - P SWITCH, C.I. RUBBER GASKETED WATERPROOF, ENCLOSURE
- 13 96" I.D. M.H. SECTIONS, WITH FLEXIBLE GASKETED JOINTS CONFORMING TO ASTM C478
- 14 NEMA 4X JUNCTION BOX
- 15 SUPPORT BAR: - ANGLE 3-1/2" X 3-1/2" X 3/8" (GALV.) CLIPS - 3-1/2" X 1/4" X 8" LG. FASTENERS - 2-3/4" GALV. EXP. BOLTS (CLIP TO CONC.), 2-3/4" GALV. MACH. BOLTS (EA. END TO ANGLE)
- 16 VENT, 6" C.I.P. IN PLACE, W/C.I. VENT CAP
- 17 WATERTIGHT DOOR W/LOCK
- 18 SILICONE SEALANT (TYPICAL 5 PLACES)
- 19 1-1/2" TELEMETERING CONDUIT - STUB OUT 5' AS SHOWN (FUTURE)
- 20 POWER SERVICE PER SNOHOMISH COUNTY P.U.D. REQUIREMENTS
- 21 4" X 5' X 6" THICK CONCRETE SLAB FOR LIQUID LEVEL CONTROL AND ELECTRICAL PANELS

CONTROL SETTINGS
W.S. ELEVATIONS (FT)

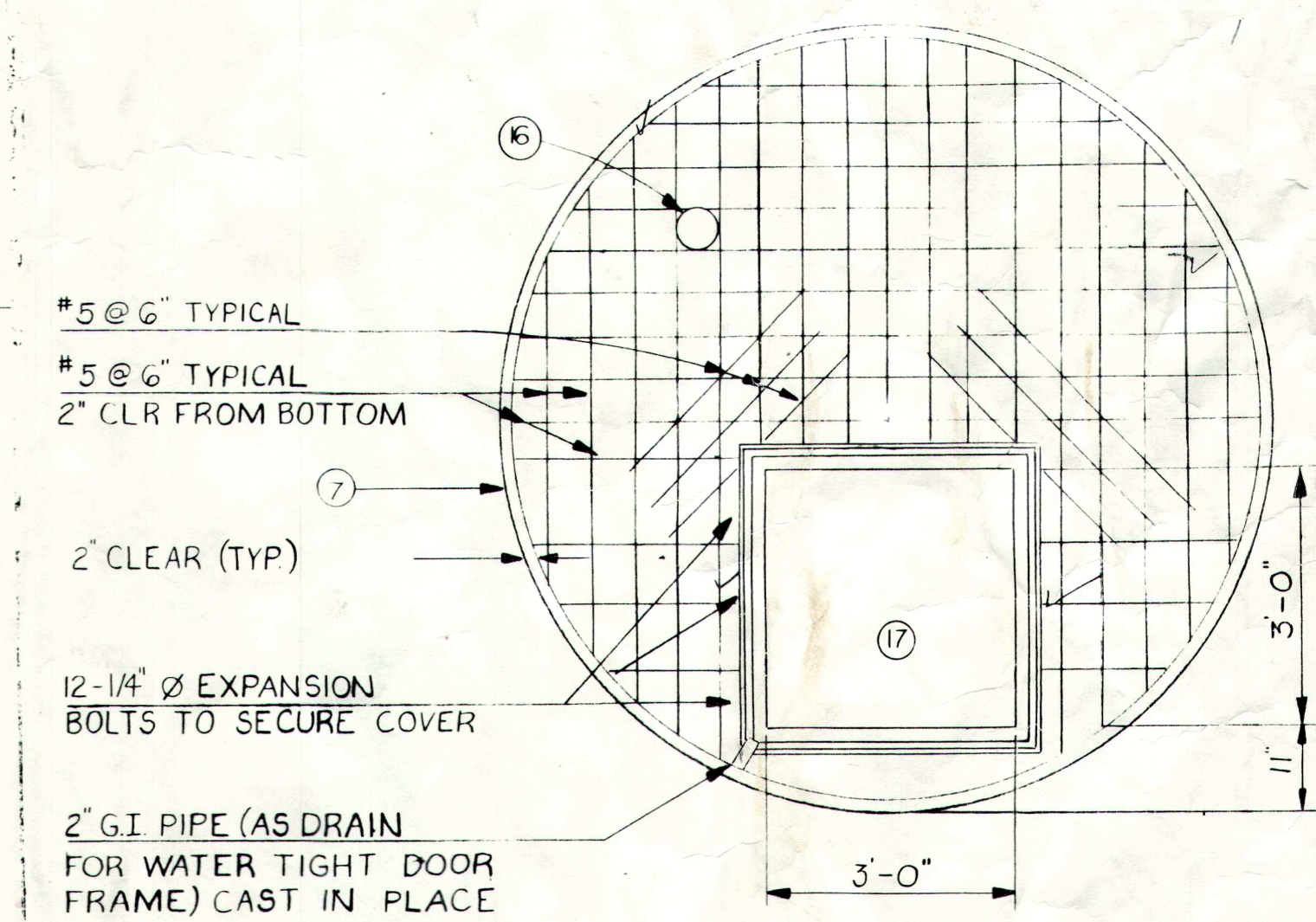
HIGH WATER ALARM	- 715
START PUMP NO.2	- 710
STOP PUMP NO.2	- 637
START PUMP NO.1	- 685
STOP PUMP NO.1	- 637
LOW WATER ALARM	- 635



PUMP STATION SITE PLAN (1/10)
SCALE: 1/2" = 1'-0"



PUMP STATION NO. 2 ELEVATION (2/10)
SCALE: 1/2" = 1'-0" CEDAR STUMP



112" DIAMETER TOP SLAB (3/10)
SCALE: 1/2" = 1'-0" (ROTATED)

AS BUILT DRAWING

SYN	REVISIONS DESCRIPTION	DATE

GENERAL NOTES

DESIGNED BY RANDY HERRALA

DRAWN BY REN FRANCO

CHECKED BY RANDY HERRALA

APPROVED BY LARRY WADE

DATE FEB. 1978

SCALE AS SHOWN

FR NO

LARRY R. WADE
STATE OF WASHINGTON
REGISTERED PROFESSIONAL ENGINEER

HAMMOND, COLLIER & WADE - LIVINGSTONE ASSOCIATES, INC.
CONSULTING ENGINEERS
4010 STONE WAY N. SEATTLE WASHINGTON 98103
(206) 632-2664

CITY OF MARYSVILLE, WASHINGTON
ISLAND CROSSING
SANITARY SEWER U.L.I.D. NO. 5
PUMP STATION NO. 2 (PORTAGE CREEK)

DRAWING NO 1500-231
SHEET 10 OF 11