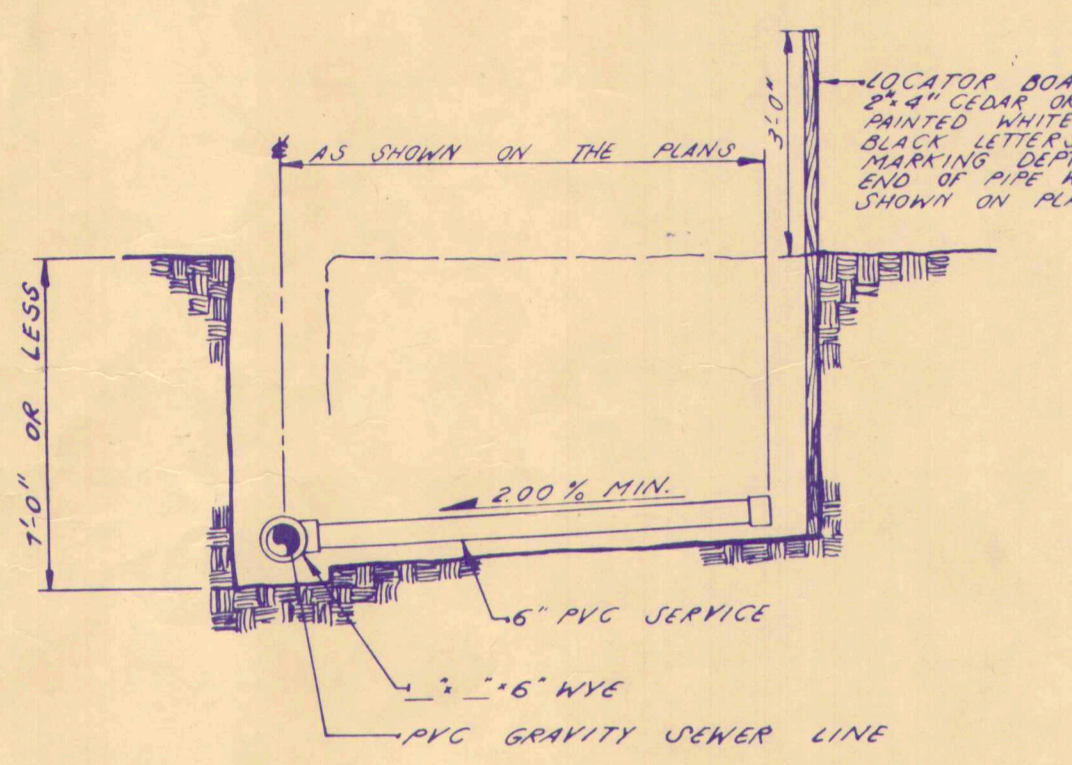
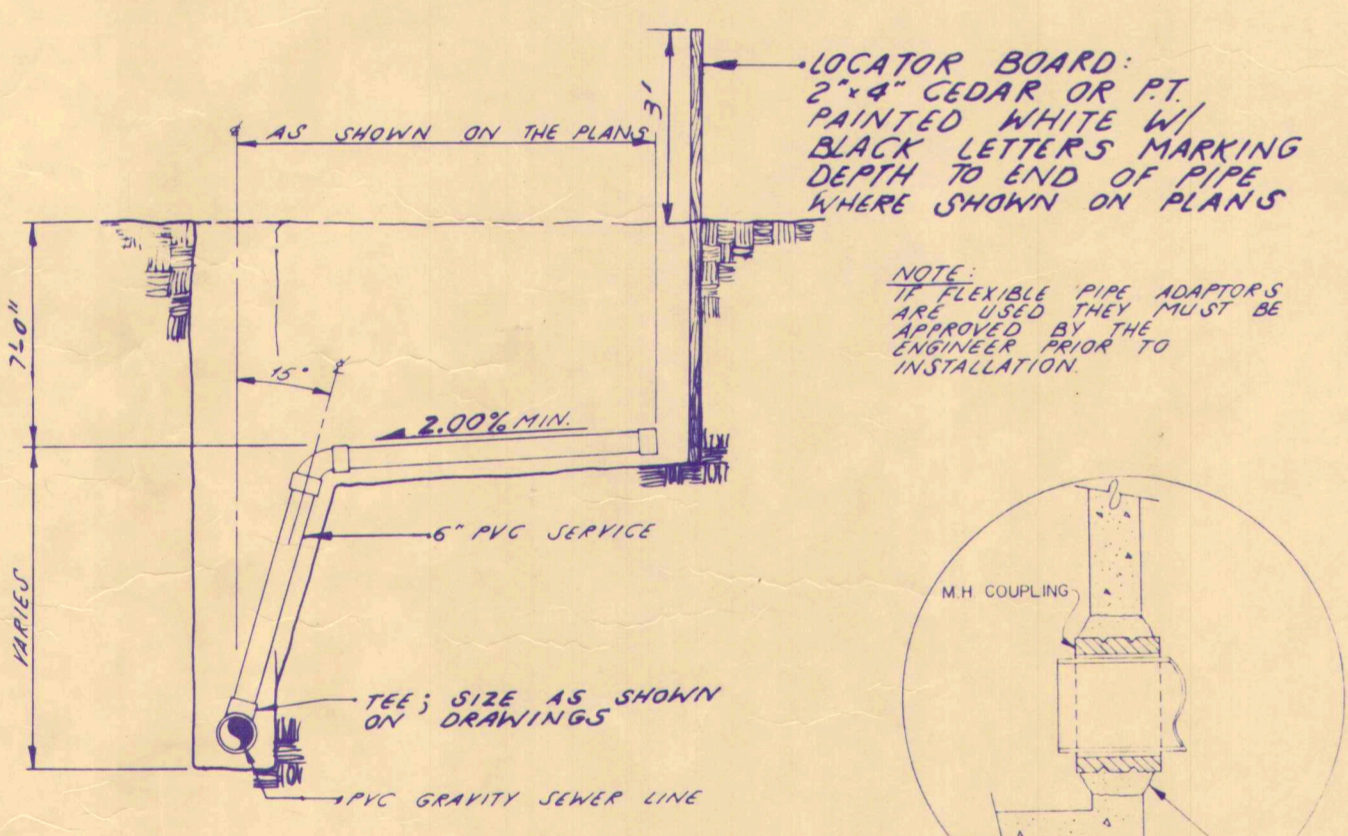


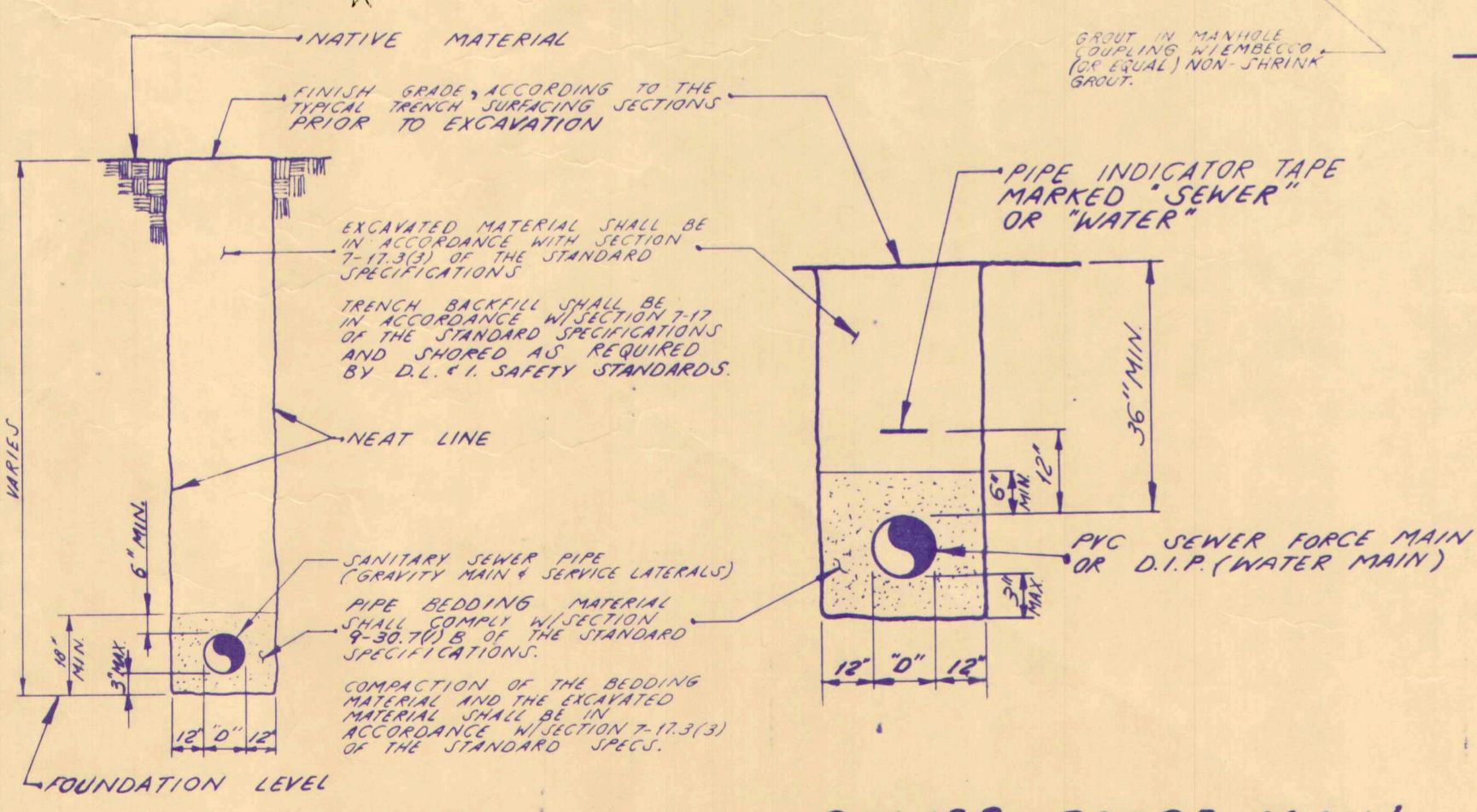
TRENCH SURFACING SECTIONS  
N.T.S.



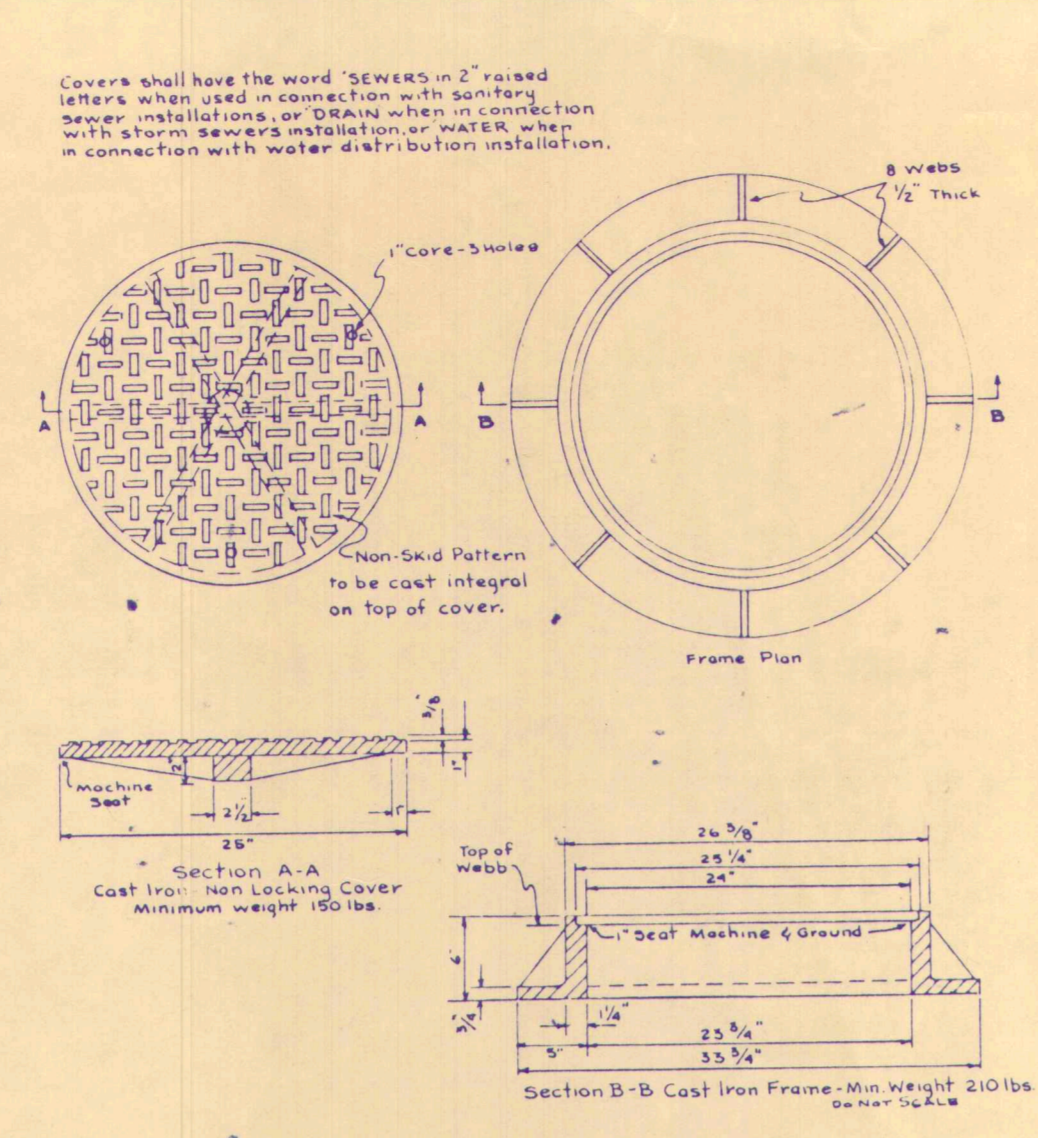
SIDE SERVICE DETAIL  
N.T.S.



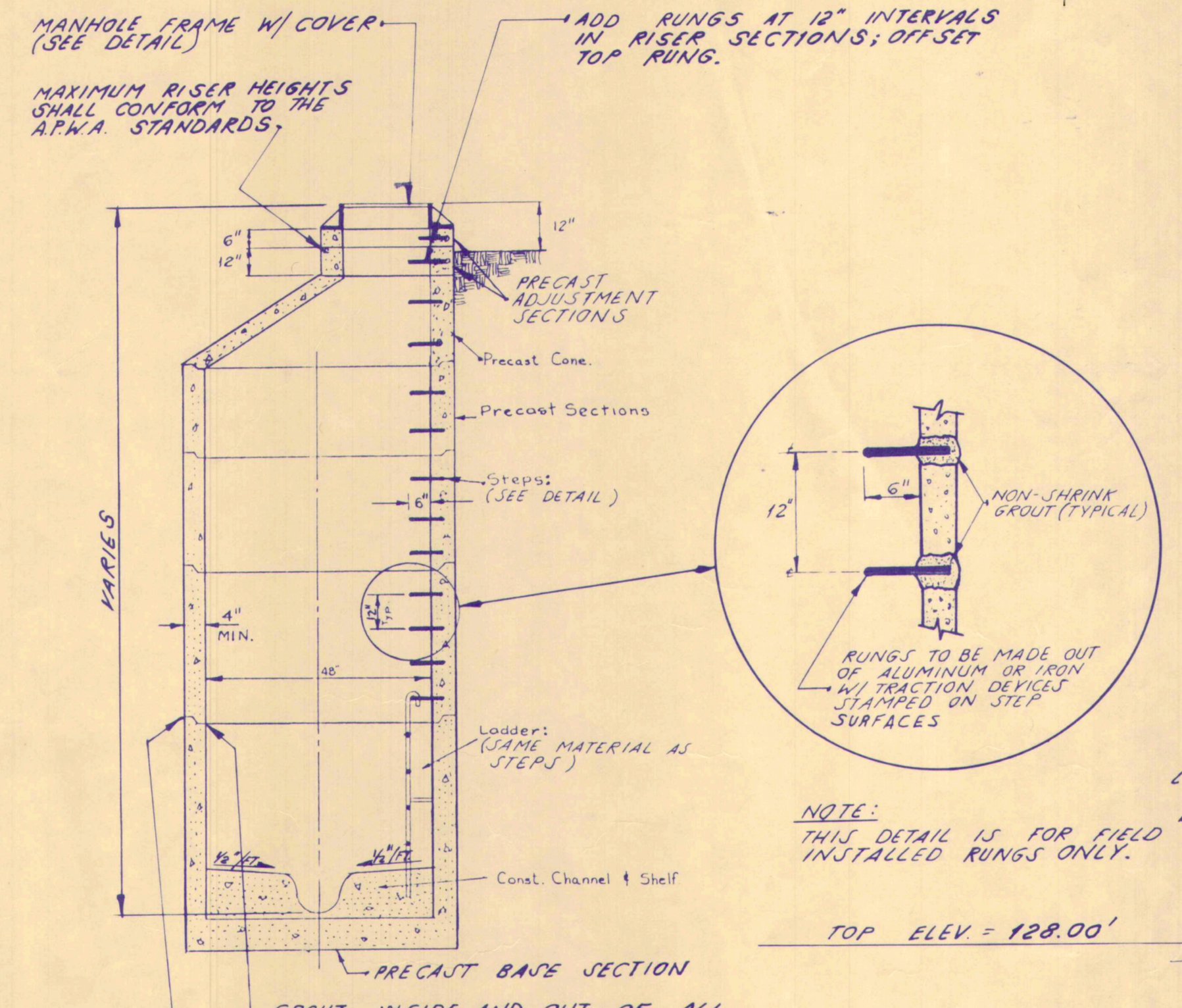
SIDE SERVICE DETAIL  
N.T.S.



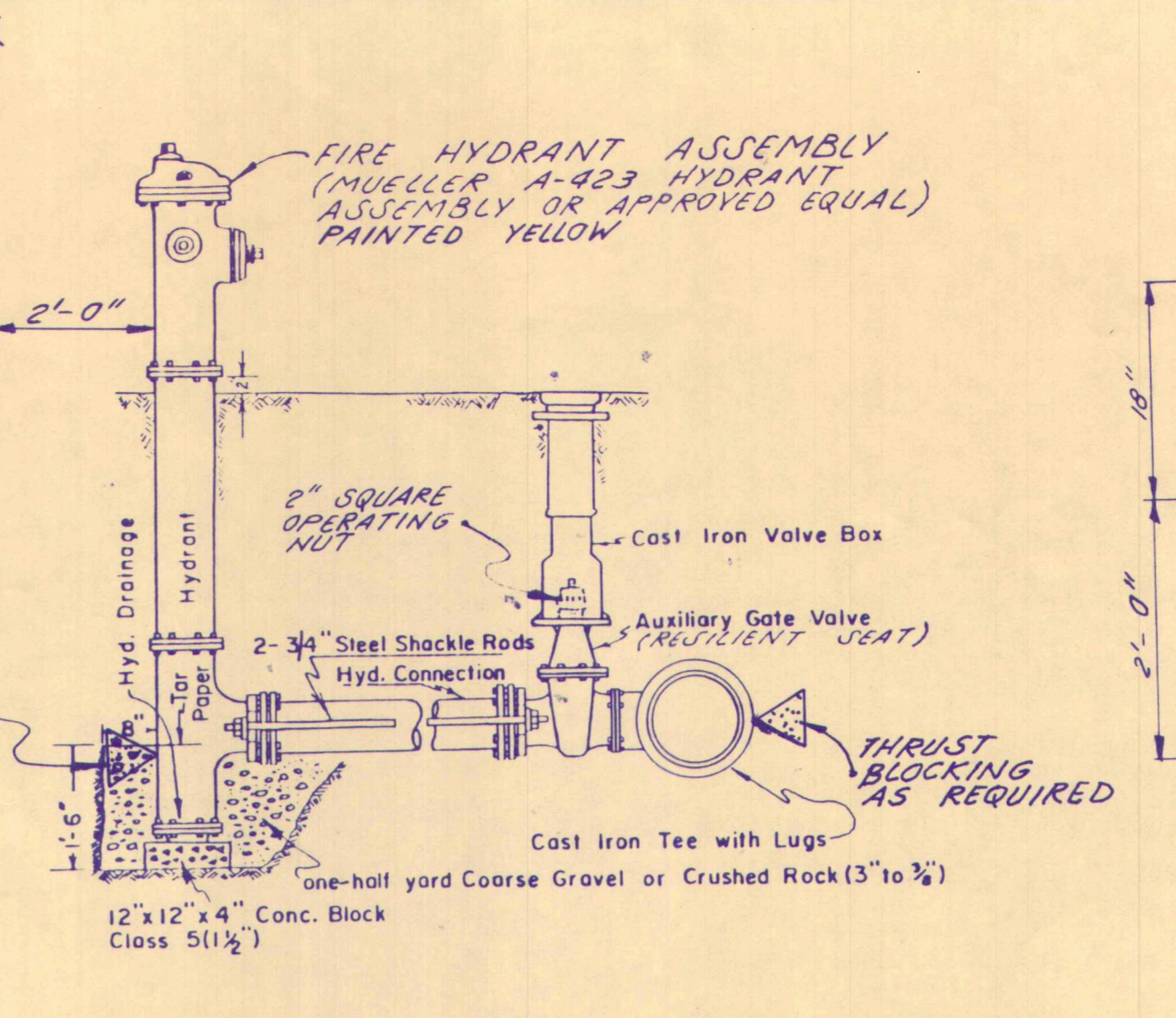
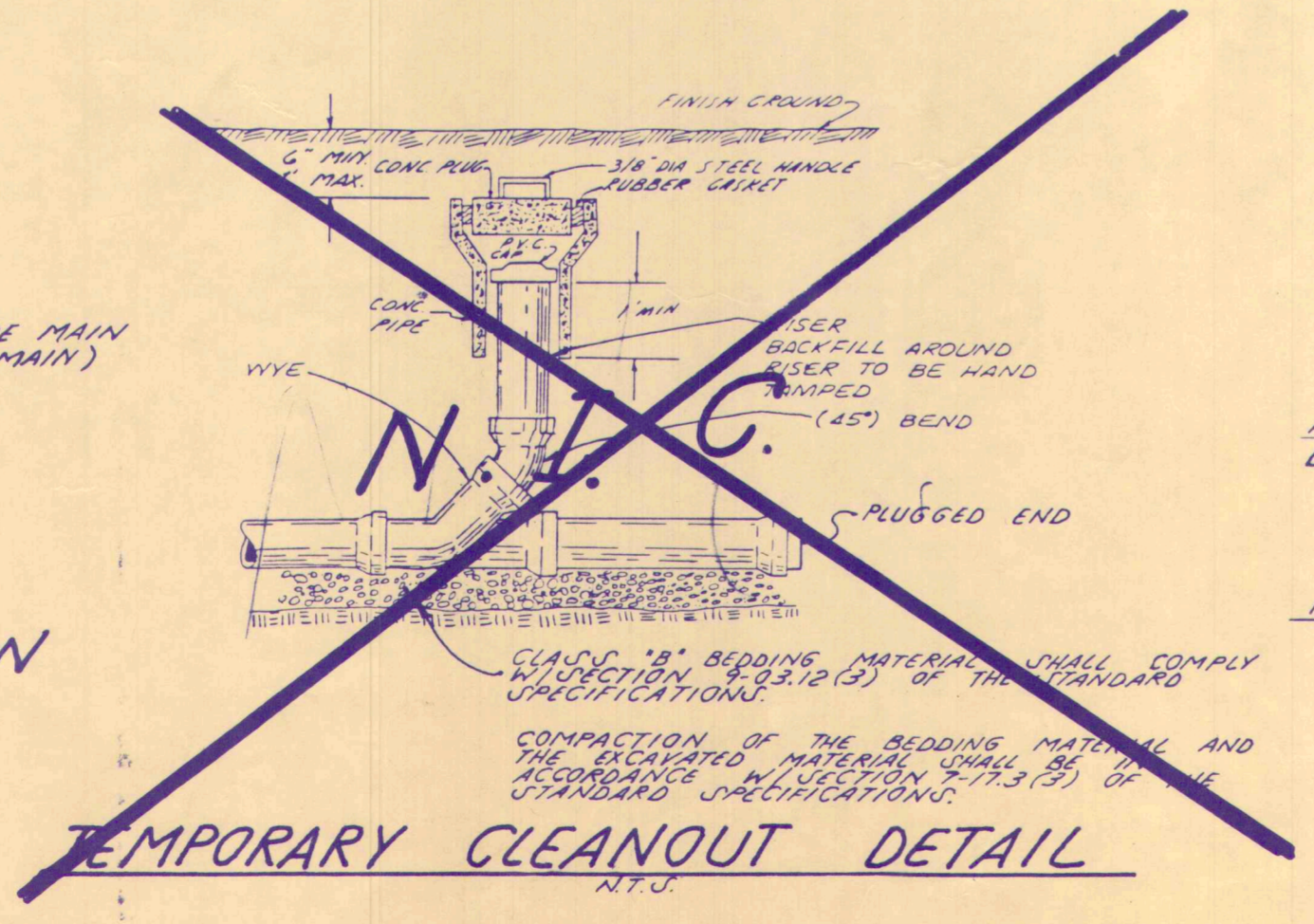
GRAVITY MAIN & WATER MAIN  
TYPICAL TRENCH SECTIONS  
N.T.S.



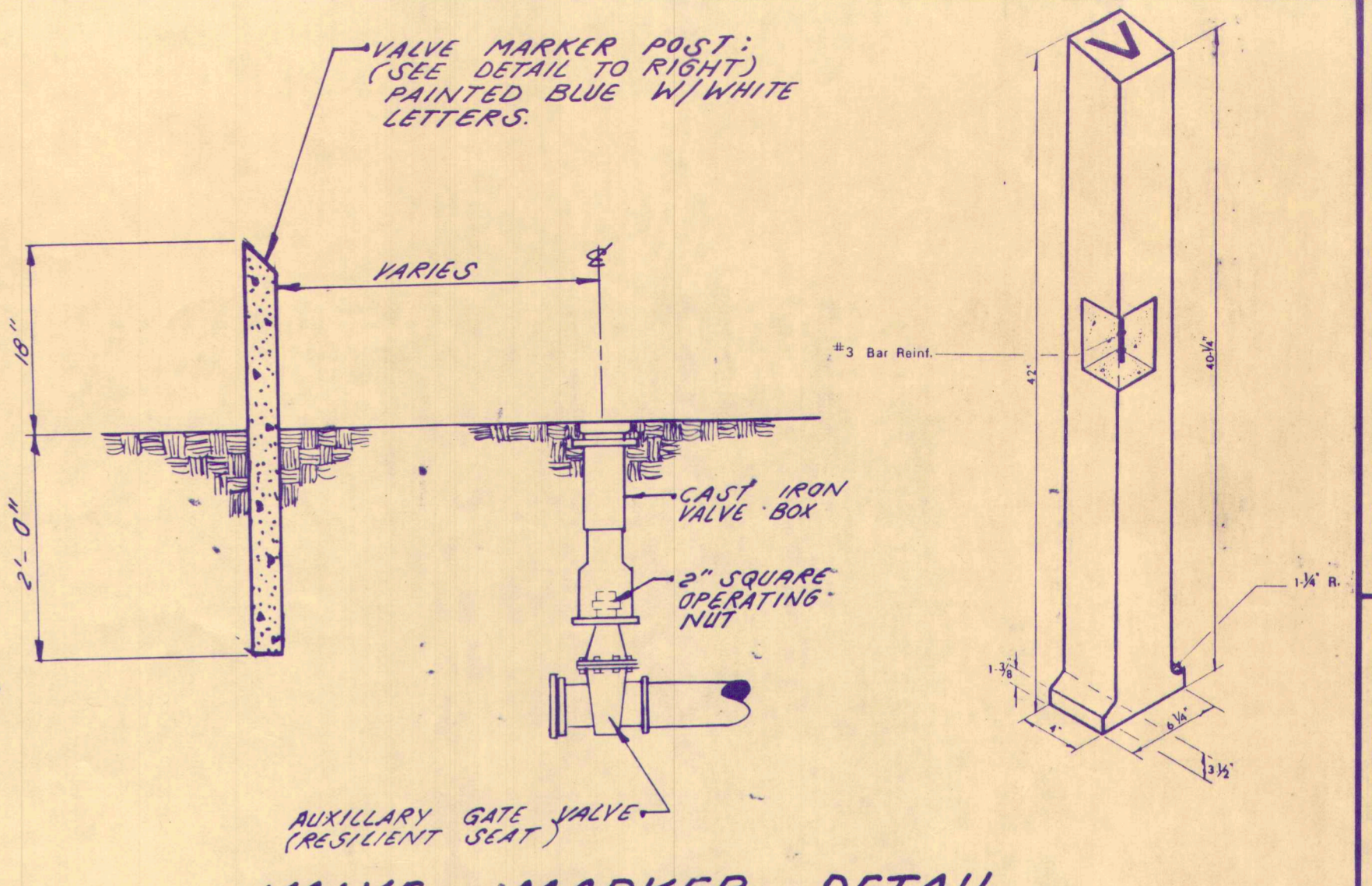
TYPICAL MANHOLE FRAME W/ LOCKING COVER  
N.T.S.



TYPICAL MANHOLE DETAIL  
N.T.S.

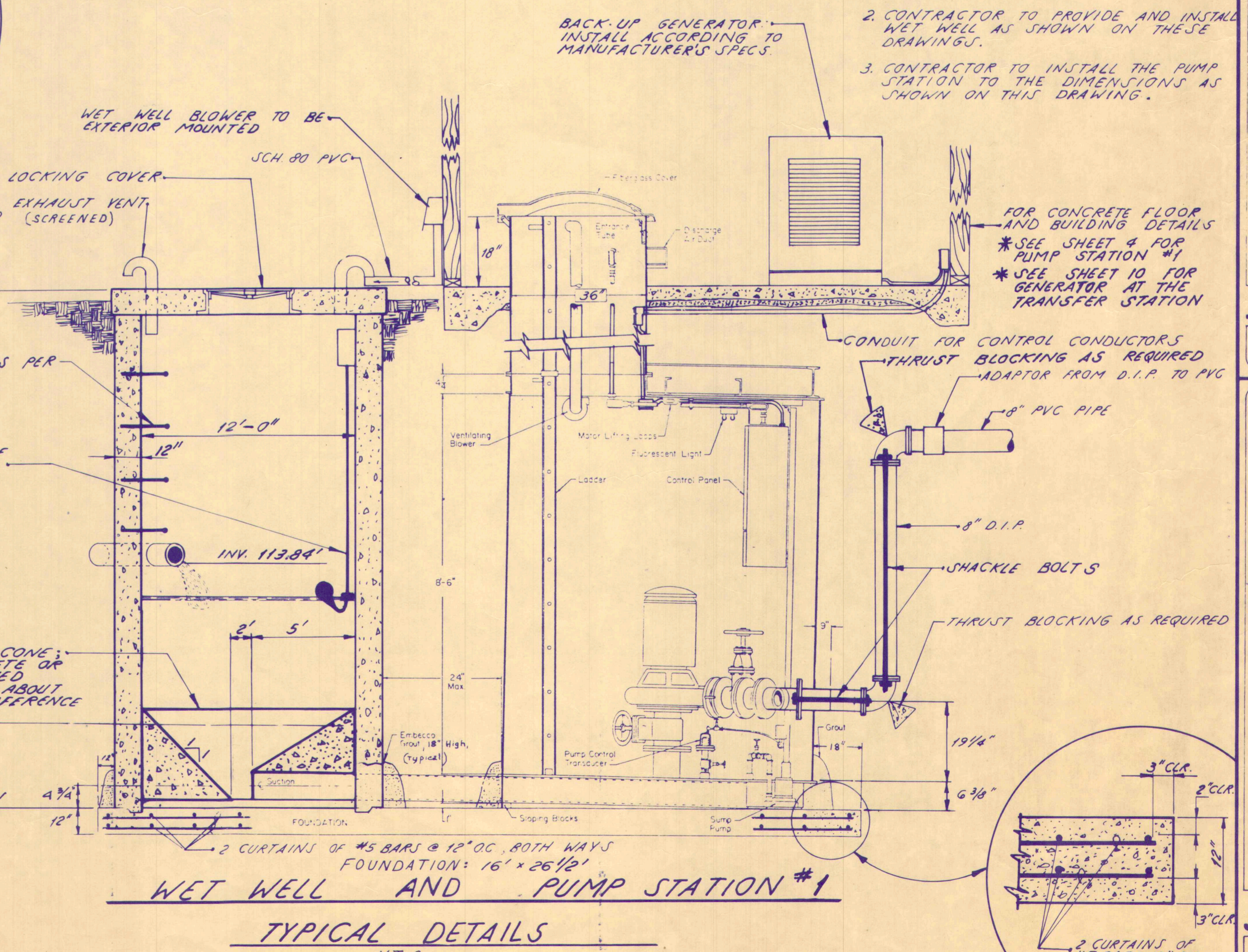


HYDRANT ASSEMBLY DETAIL  
N.T.S.



VALVE MARKER DETAIL  
N.T.S.

SETTINGS	ELEV.
LEAD PUMP ON	112.50'
LAG PUMP ON	113.30'
HIGH WATER ALARM	113.80'
BOTH PUMPS OFF	110.50'



WET WELL AND PUMP STATION #1  
TYPICAL DETAILS  
N.T.S.

- NOTES:
- ENGINEERS PLANS AND SPECIFICATIONS FOR DETAILS OF THE WET WELL, CONCRETE FOUNDATION, GROUT UNDER PUMP STATION, AND ELECTRICAL SERVICE ARE INCLUDED IN THIS CONTRACT.
  - CONTRACTOR TO PROVIDE AND INSTALL WET WELL AS SHOWN ON THESE DRAWINGS.
  - CONTRACTOR TO INSTALL THE PUMP STATION TO THE DIMENSIONS AS SHOWN ON THIS DRAWING.

DESIGNED DATE  
DRAWN T. ADRIAN DATE  
CHECKED A. DETOUR DATE  
SCALE - HORIZONTAL: N/A  
SCALE - VERTICAL: N/A  
JOB NUMBER #7341  
FIELD BOOK  
COUNTY STROMBOLICH



by Cascade Surveying & Engineering, Inc.  
P O BOX 326 ARLINGTON, WA  
435-5551  
652-7572

for E.D.A. PROJECT #07-01-03164  
CITY OF ARLINGTON  
AIRPORT SEWER EXTENSION  
BAYLNER ADDITION  
DETAIL SHEET