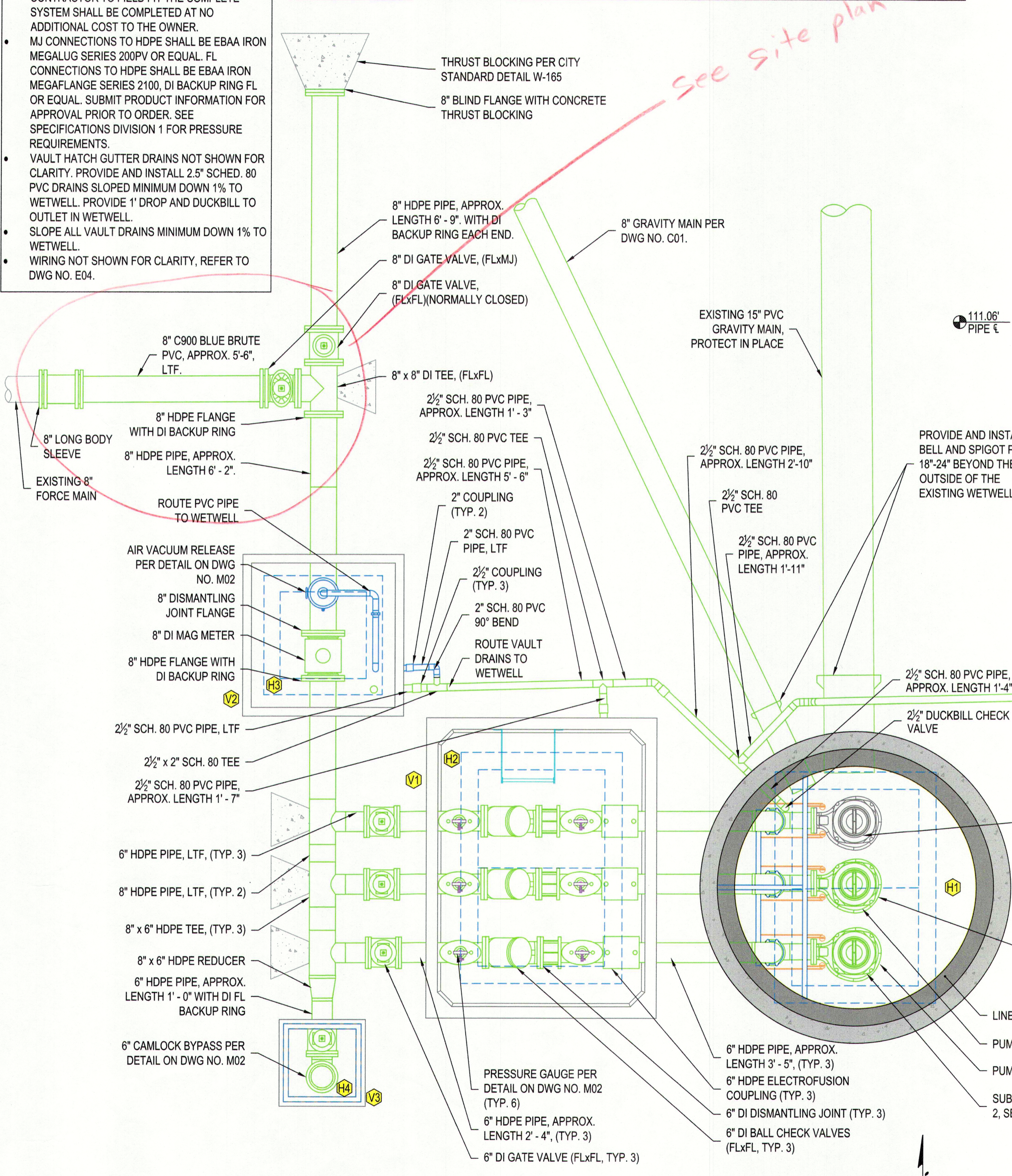
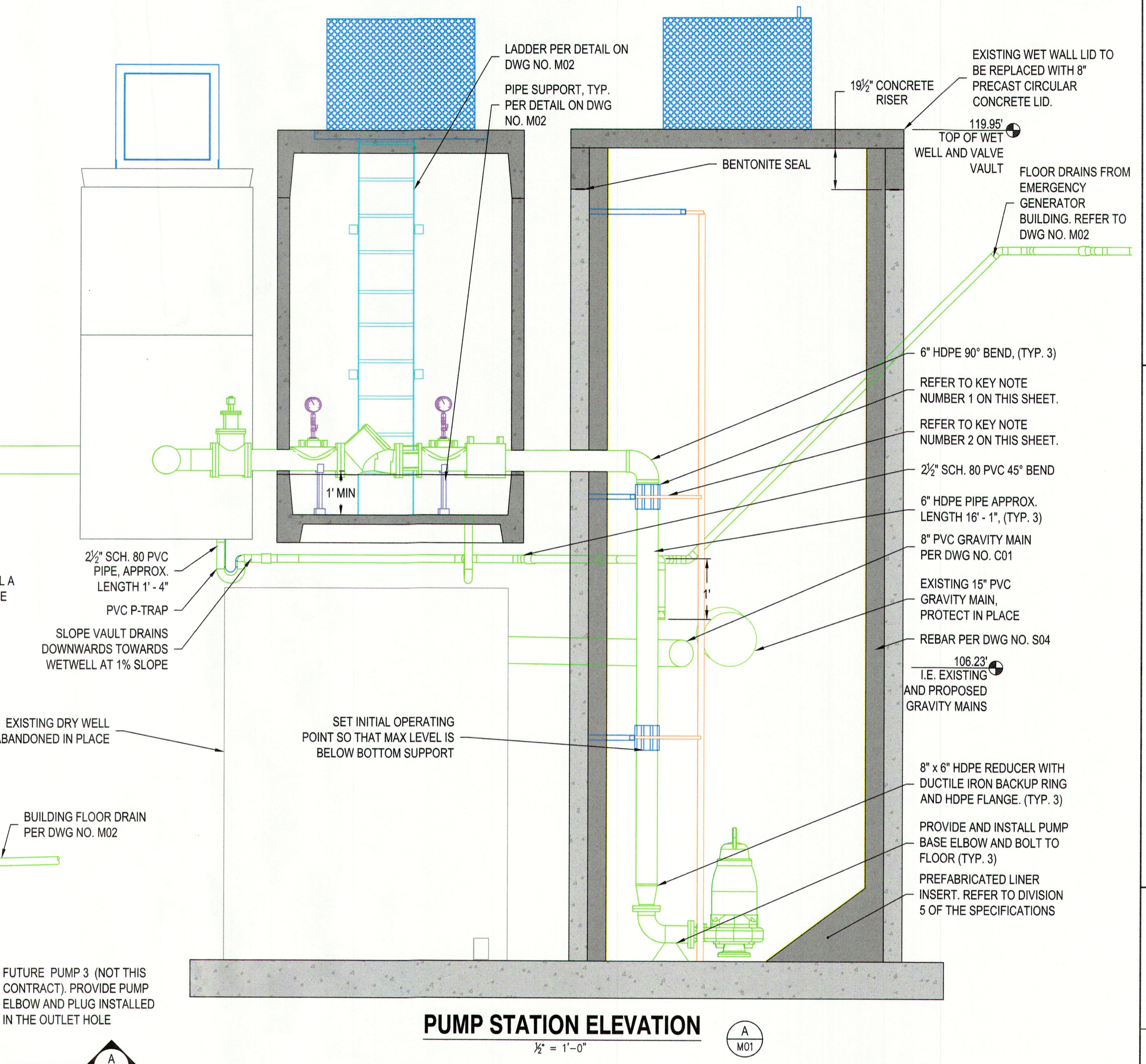


- NOTES:**
- SEE DIVISION 2 FOR HDPE INSTALLER REQUIREMENTS AND PIPE LAYOUT SUBMITTAL REQUIREMENTS.
 - SUBMIT LINER LAYOUT FOR APPROVAL SHOWING ALL PIPE AND CONDUIT PENETRATIONS PRIOR TO FABRICATION.
 - CONTRACTOR SHALL INSTALL LINER SYSTEM FIRST AND ADJUST PIPING AND CONDUIT TO FIT THRU LINER PENETRATIONS. ALL PENETRATION DIMENSIONS SHALL BE FIELD VERIFIED BEFORE PIPE AND CONDUIT IS LAID OUT AND ASSEMBLED. ANY ADJUSTMENTS REQUIRED BY THE CONTRACTOR TO FIELD FIT THE COMPLETE SYSTEM SHALL BE COMPLETED AT NO ADDITIONAL COST TO THE OWNER.
 - MJ CONNECTIONS TO HDPE SHALL BE EBAA IRON MEGALUG SERIES 200PV OR EQUAL. FL CONNECTIONS TO HDPE SHALL BE EBAA IRON MEGAFLANGE SERIES 2100, DI BACKUP RING FL OR EQUAL. SUBMIT PRODUCT INFORMATION FOR APPROVAL PRIOR TO ORDER. SEE SPECIFICATIONS DIVISION 1 FOR PRESSURE REQUIREMENTS.
 - VAULT HATCH GUTTER DRAINS NOT SHOWN FOR CLARITY. PROVIDE AND INSTALL 2.5" SCHED. 80 PVC DRAINS SLOPED MINIMUM DOWN 1% TO WETWELL. PROVIDE 1" DROP AND DUCKBILL TO OUTLET IN WETWELL.
 - SLOPE ALL VAULT DRAINS MINIMUM DOWN 1% TO WETWELL.
 - WIRING NOT SHOWN FOR CLARITY, REFER TO DWG NO. E04.

- KEY NOTES:**
- PROVIDE AND INSTALL PIPE SUPPORTS CONSTRUCTED OF UNISTRUT P1000HS OR P1000T SS CHANNEL OR EQUAL AND 316 SS FITTINGS AND BOLTS SET PERPENDICULAR AND TANGENT TO THE 3 HDPE PIPES. PROVIDE AND INSTALL SS PIPE STRAP AROUND EACH PIPE SECURED TO SUPPORT WITH 316 SS BOLTS AND NUTS. SUPPORT SHALL HAVE A TEE UNISTRUT SUPPORT SET NEAR MIDSPAN. ANCHOR SUPPORTS TO CONCRETE WITH 3/4" DIAMETER SS ANCHORS TO EACH SUPPORT END, EMBED 4" IN CONCRETE WITH EPOXY GROUT. SEAL LINER PENETRATIONS. SEE SPECIFICATIONS DIVISION 3 FOR EPOXY GROUT SPECIFICATIONS.
 - PROVIDE AND INSTALL 2 SETS OF 3 PUMP GUIDERAIL SUPPORTS. GUIDERAIL SHALL BE SET SECURELY TO HDPE PIPE WITHOUT DAMAGE TO PIPE PLACED BELOW SECOND PIPE SUPPORT. ABOVE PIPE FABRICATE SUPPORT BRACE FROM UNISTRUT P1000HS OR P1000T SS CHANNEL WITH 316 SS FITTINGS AND BOLTS. ATTACH TO GUIDERAIL SUPPORT ABOVE PIPING AND ALIGN GUIDERAIL. SUPPORT SHALL HAVE A TEE UNISTRUT SUPPORT SET NEAR MIDSPAN. ANCHOR SUPPORT TO CONCRETE WITH 3/4" DIAMETER SS ANCHORS TO EACH SUPPORT END, EMBED 4" IN CONCRETE WITH EPOXY GROUT. SEAL LINER PENETRATIONS. SEE SPECIFICATIONS DIVISION 3 FOR EPOXY GROUT SPECIFICATIONS.



PUMP STATION MECHANICAL PLAN
1/2" = 1'-0"



PUMP STATION ELEVATION
1/2" = 1'-0"

HATCH NO.	DIMENSIONS		MANUFACTURER	TYPE	LOADING	REMARKS
	WIDTH	HEIGHT				
H1	48"	72"	LW PRODUCTS	HD-3C	H20	ACCESS SAFETY GRATE TO BE INSTALLED PER TECHNICAL SPECIFICATIONS. HATCH TO OPEN NORTH AND SOUTH. SAFETY GRATE TO OPEN TO THE EAST.
H2	48"	72"	LW PRODUCTS	HD-3C	H20	HATCH TO OPEN SOUTH
H3	30"	30"	LW PRODUCTS	HS-2A	H20	HATCH TO OPEN SOUTH
H4	24"	24"	LW PRODUCTS	HS-1A	H20	HATCH TO OPEN SOUTH

VAULT NO.	INSIDE DIMENSIONS			MANUFACTURER	Type	Remarks
	WIDTH	HEIGHT	DEPTH			
V1	8'-0"	6'-0"	7'-0"	OLDCASTLE	687-LA	CUSTOM HATCH
V2	4'-2"	4'-2"	5'-0"	OLDCASTLE	507-LA	CUSTOM HATCH
V3	2'-6"	2'-6"	2'-0"	FOG-TITE	3030-SB	CUSTOM HATCH

Professional Engineer Seal for R. H. 2217, State of Washington, License No. 32878.

RH2 ENGINEERS, INC.
PLANNERS
SCIENTISTS
1807 20th Ave. SE, Suite 210
Bothell, WA 98021
www.rh2.com
206.487.2002

SIGNED: 2/16/2017

CITY OF ARLINGTON
LIFT STATION 2 REHABILITATION

MECHANICAL PLAN

City of Arlington Seal

REVISIONS

NO.	DATE	DESCRIPTION
1	2/15/2017	ISSUE FOR CONSTRUCTION

SCALE: SHOWN

DRAWING IS FULL SCALE WHEN BAR MEASURES 2"

DWG NO.: M01 SHEET NO.: 12 OF 31