

8+00.95~25.00' LT.  
CONNECT TO EX. 12" WATER WITH  
1-1/2"x12" TAPPING TEE AND VALVE (FLxMJ)  
NOTE  
FOR DETAIL OF WATER CASING ACROSS  
SR 531, SEE SHEET 5.

EX. INTAKE  
IE = 363.68  
48'-EX. 18"CPP  
EX. OUTFALL  
IE = 360.67

EX. INTAKE  
IE = 342.65  
56'-EX. 18"CP SD  
EX. OUTFALL  
IE = 339.07  
13+43.06~42.39' RT.  
1-8" 45° BEND (MxMJ)  
CONCRETE BLOCKING

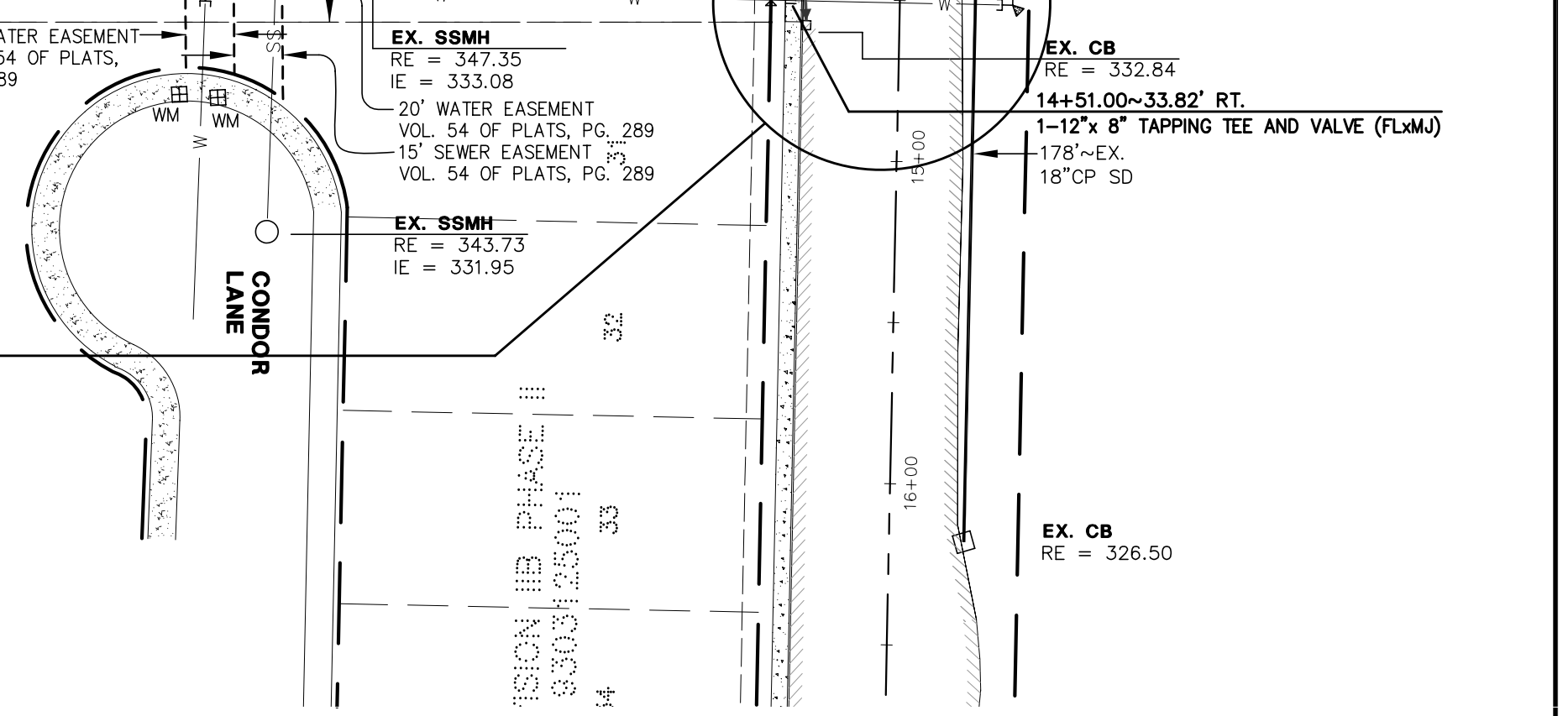
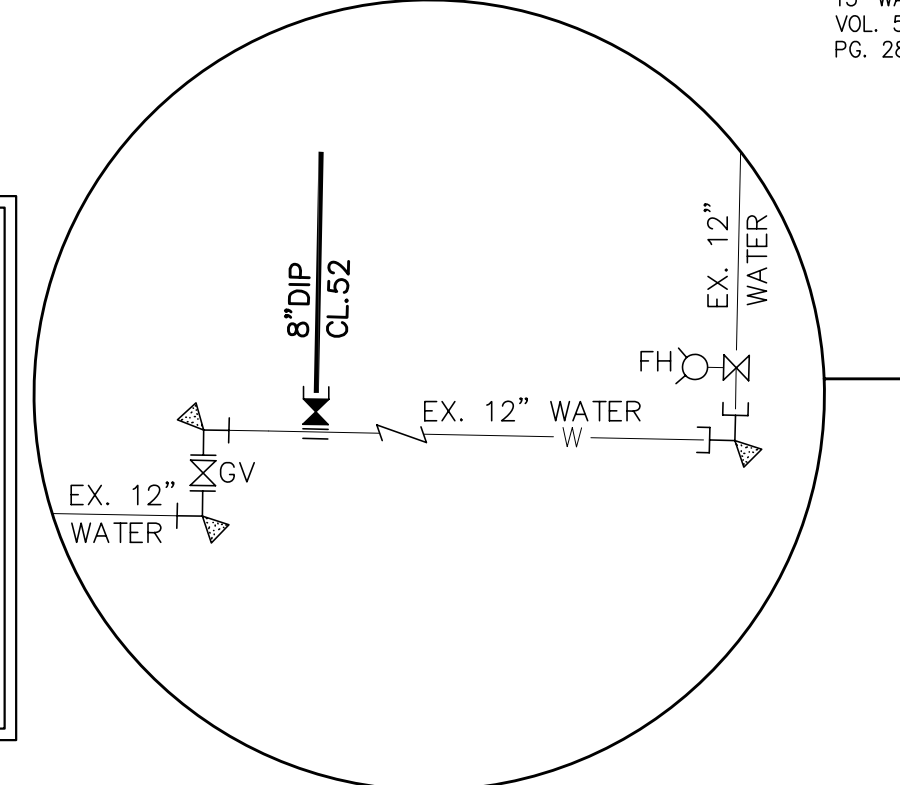
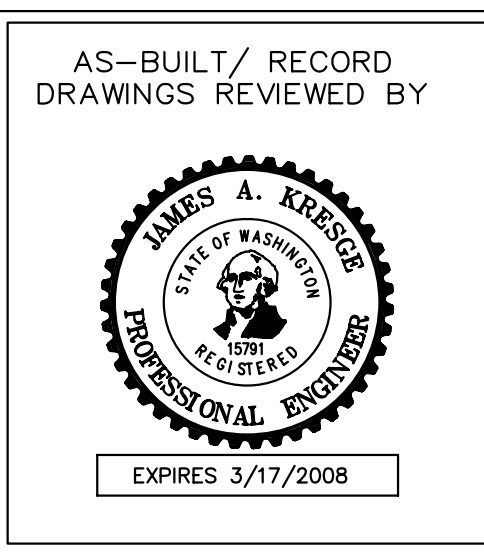
EX. INTAKE  
IE = 343.73  
IE = 331.95  
EX. CB  
RE = 332.84  
14+51.00~33.82' RT.  
1-12" 8" TAPPING TEE AND VALVE (FLxMJ)  
178'-EX.  
18"CP SD  
EX. CB  
RE = 326.50

**REFERENCE NOTE**  
THE FOLLOWING CITY OF ARLINGTON STANDARD PLANS SHALL BE USED IN THE CONSTRUCTION OF THIS PROJECT. FOR ADDITIONAL STANDARD PLANS, SEE THE LATEST EDITION OF THE CITY OF ARLINGTON PUBLIC WORKS CONSTRUCTION STANDARDS AND SPECIFICATIONS.  
  
FIRE HYDRANT ASSEMBLY STD. PLAN NO. W-2  
3/4" DOMESTIC WATER SERVICE STD. PLAN NO. W-2  
CONCRETE BLOCKING STD. PLAN NO. W-3  
2" BLOWOFF ASSEMBLY STD. PLAN NO. W-5

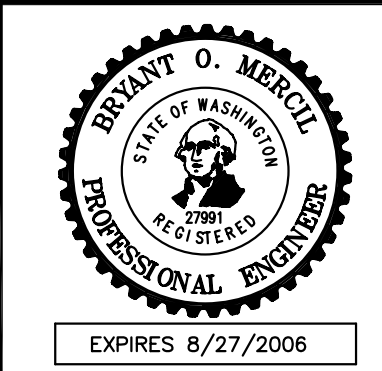
**LEGEND**  

 PROP. 12" STORM DRAIN AND 6" SIDE SERVICE  

 PROP. 8" SAN. SEWER AND 6" SIDE SERVICE  
**DATUM** N.A.V.D. 1988  
**BENCHMARK** TOP OF REBAR AND CAP LOCATED AT THE INTERSECTION OF 67TH AVE. N.E. AND THE BNSF RAILROAD, AS SHOWN ON THE VICINITY MAP ABOVE. ELEV = 148.17  
 FOR CONVERSION TO N.G.V.D. 1929, SUBTRACT 3.70 FEET.



**HIGA-BURKHOLDER ASSOCIATES, LLC**  
LAND USE PLANNING / CIVIL ENGINEERING  
1721 Hewitt Avenue Suite 401 Everett, WA 98201  
phone (425)252-2826 fax (425)252-9551



**CITY OF ARLINGTON**  
THIS SHEET HAS BEEN APPROVED PER THE CONDITIONS ON SHEET 1  
BY: \_\_\_\_\_ CITY ENGINEER  
DATE: \_\_\_\_ / \_\_\_\_ / \_\_\_\_

**CALL 48 HOURS BEFORE YOU DIG**  
1-800-424-5555

DATE	REVISIONS	BY	PLAN DATE:
6/16/03	REVISED PER CITY REVIEW	LDR	10/04/02
9/26/03	REVISED PER CITY REVIEW	LDR	DESIGNED BY: TDP
8/05/04	AS-BUILT	PCM, MJH	DRAWN BY: TDP, PCM
10/07/04	AS-BUILT REV. PER CITY REVIEW	PCM	PLAN CHECK BY: BOM
09/27/06	AS-BUILT REV. PER CITY REVIEW	RLM	1ST SUBMITTAL: 10/10/02
10/11/06	AS-BUILT MYLAR	RLM	2ND SUBMITTAL: 06/26/03
			3RD SUBMITTAL: 09/26/03

**WATER AND SEWER PLANS**  
**MAGNOLIA ESTATES**  
**WATER PLAN**  
JOB NO. 1618  
2  
6  
XREF: LAKTWC.DWG