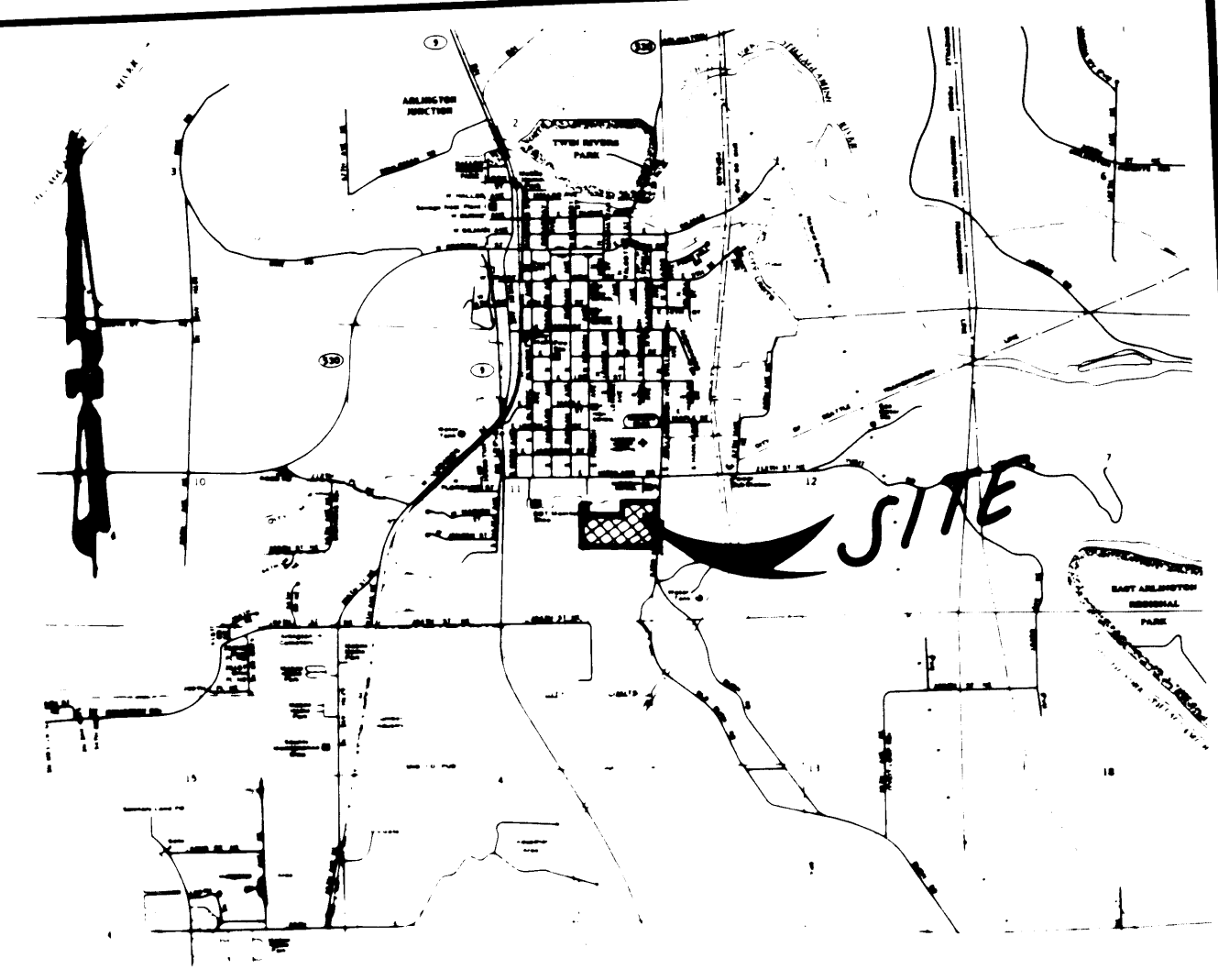
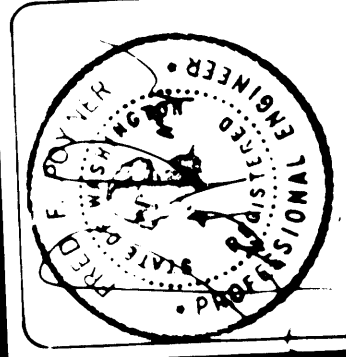


SEC. 11, T. 31 N., R. 5 E., W.M.

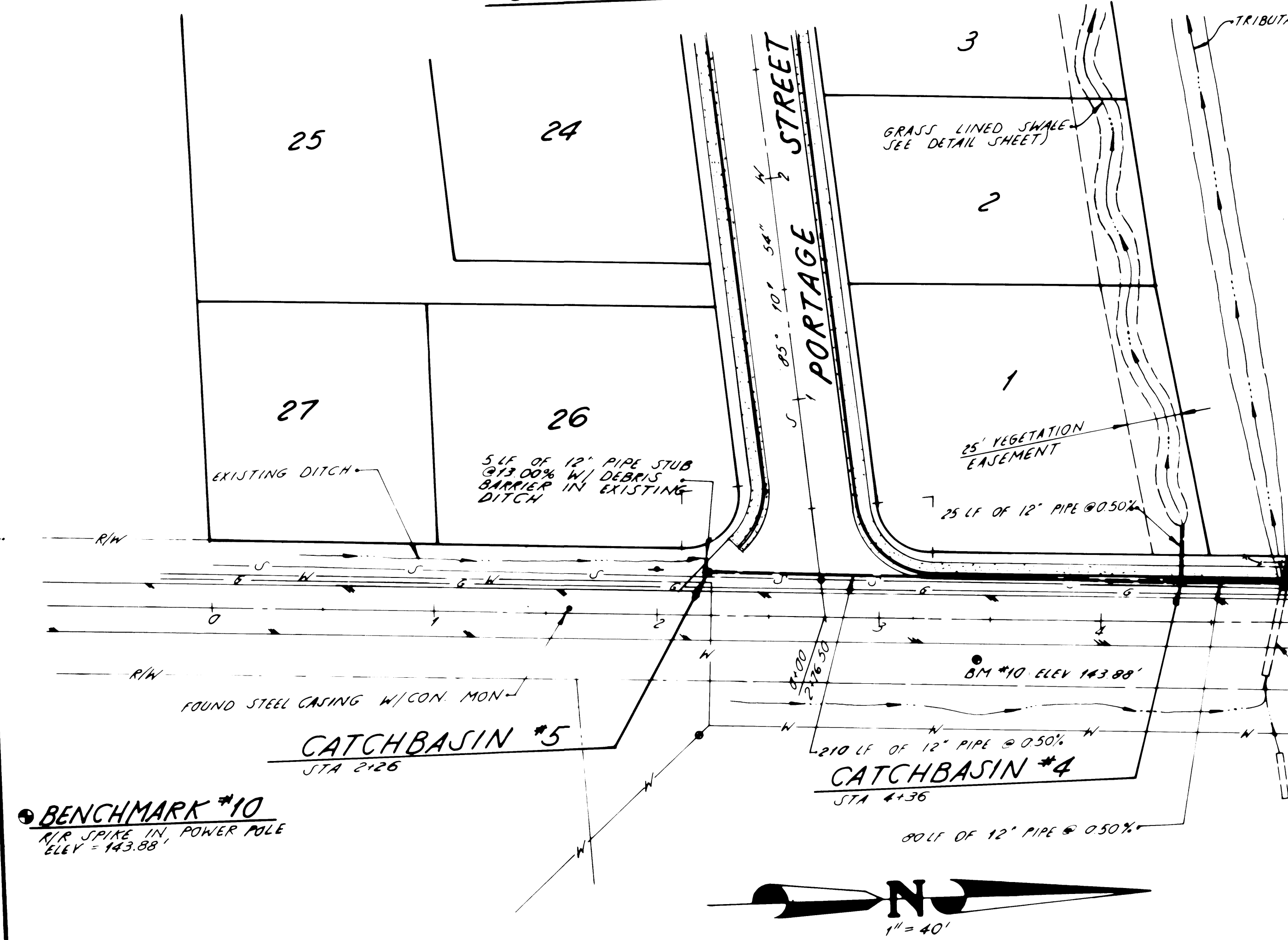
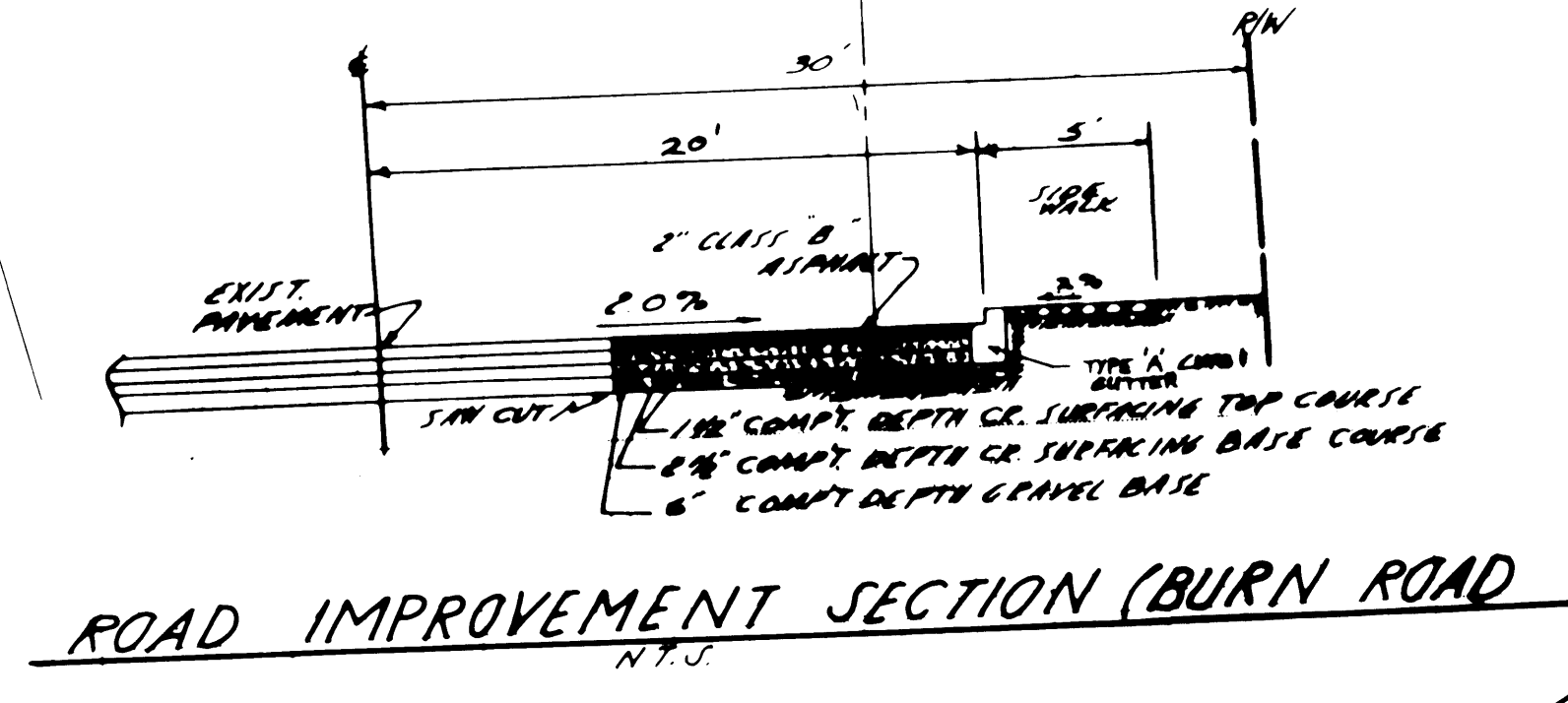
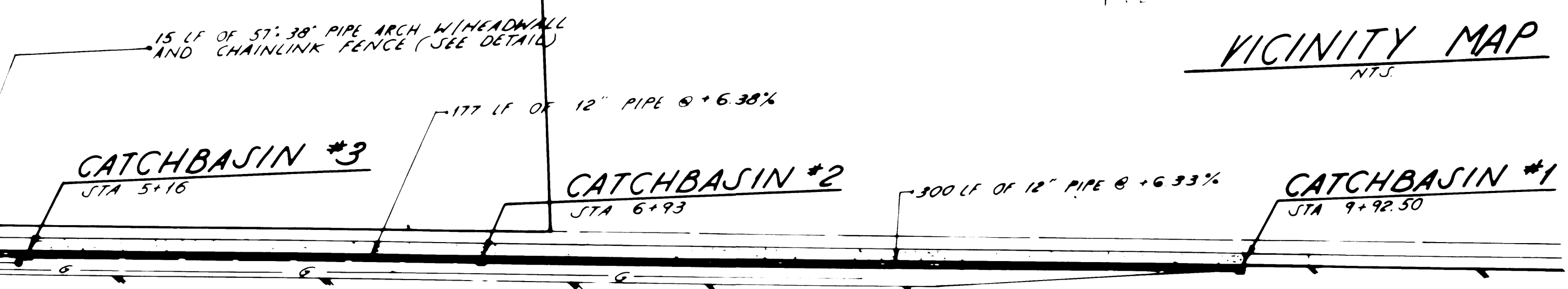
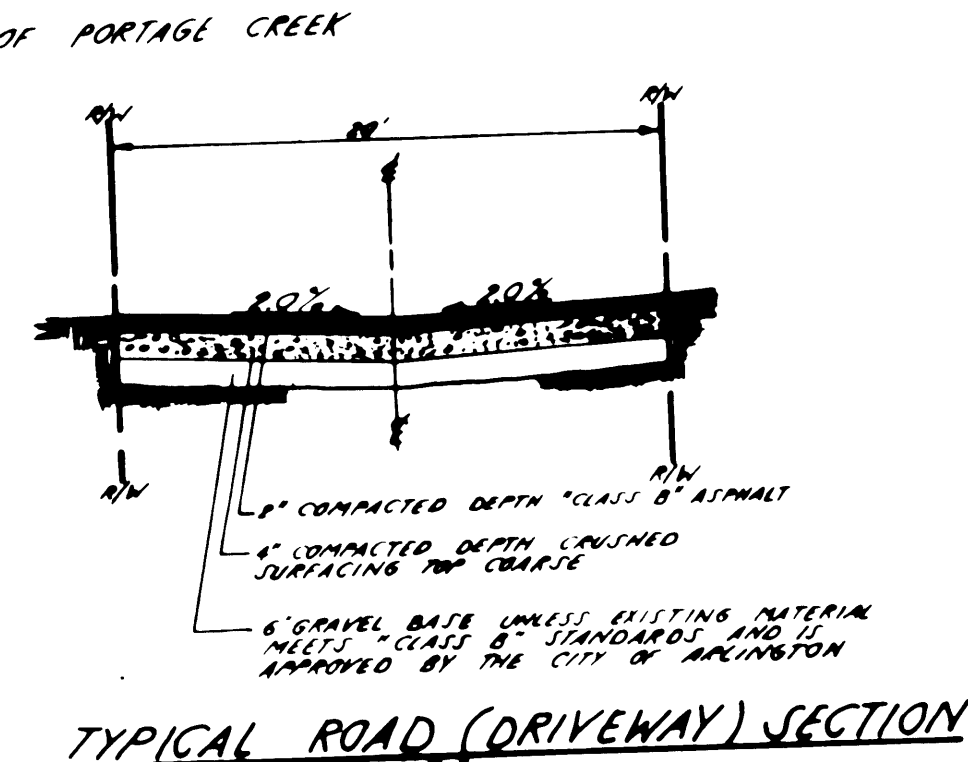


DESIGNED BY: DATE: 7/26/88  
DRAWN BY: DATE: 8/14/88  
CHECKED BY: DATE: 8/14/88  
SCALE - HORIZONTAL: 1" = 40'  
SCALE - VERTICAL: 1" = 4'  
JOB NUMBER: 6592  
FIELD BOOK: 10/10/88  
COUNTY: JARVIS

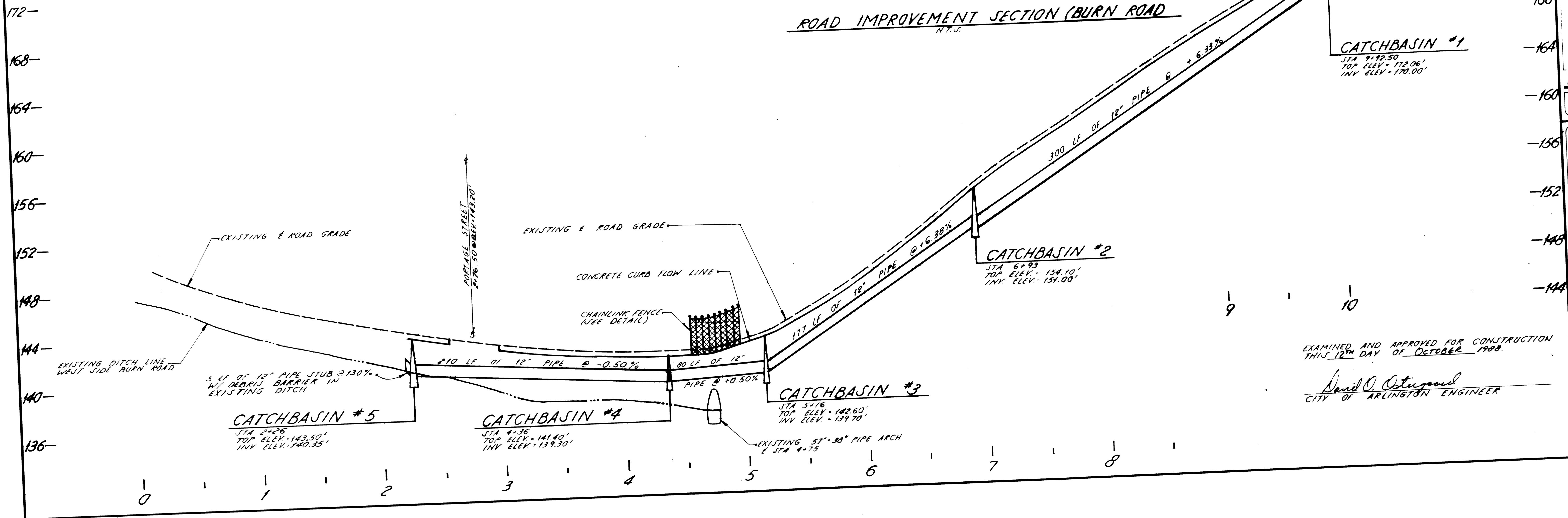
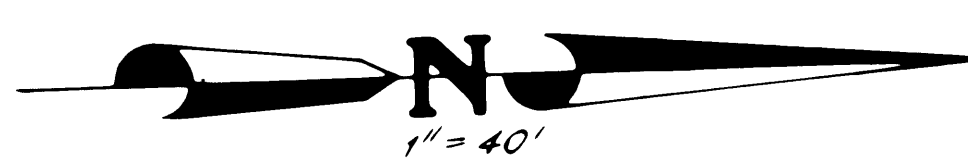


Cascade Surveying & Engineering, Inc.  
P.O. BOX 388  
ARLINGTON, WA  
438-6661  
658-7878

for KENT PRAIRIE ESTATES  
ROAD AND STORM SEWER

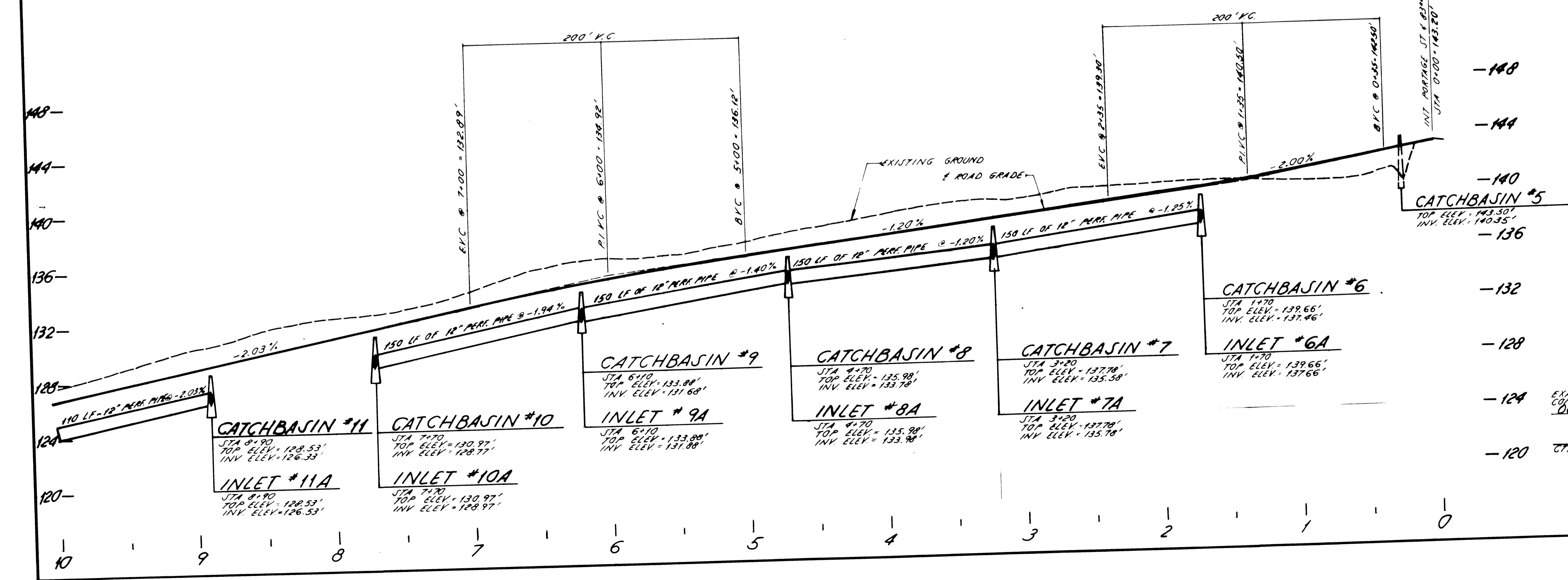
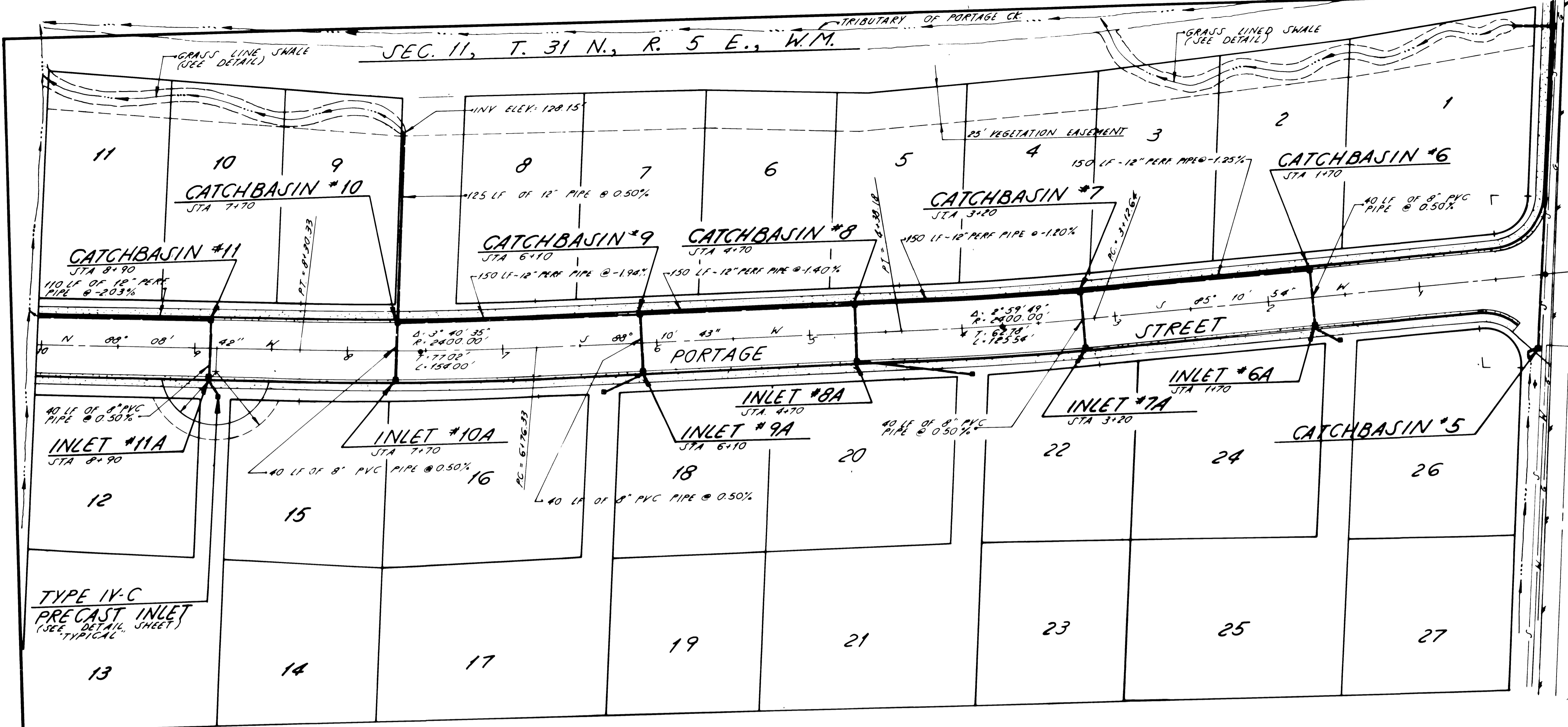


BENCHMARK #10  
NIP SPIKE IN POWER POLE  
ELEV. = 143.88'



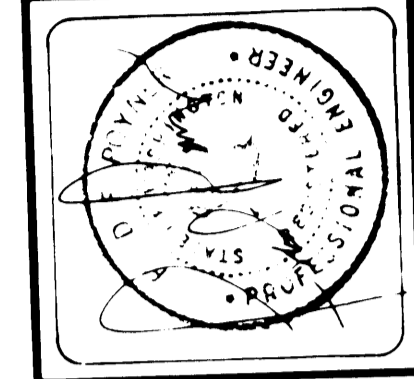
EXAMINED AND APPROVED FOR CONSTRUCTION  
THIS 12<sup>TH</sup> DAY OF OCTOBER 1988.

David O. Ostergaard  
CITY OF ARLINGTON ENGINEER



8340 AVENUE NE. (BURN ROAD)  
 8" 10" - ELEV 145.00' AIN  
 EXISTING "10" WATER MAIN  
 1" = 40'

DESIGNED BY MOORE DATE 1/25/88  
 DRAWN BY MOORE DATE 8/14/88  
 CHECKED BY T. MOORE DATE 8/14/88  
 SCALE - HORIZONTAL 1" = 40'  
 JOB NUMBER #6592  
 FIELD BOOK  
 COUNTY WASHINGTON

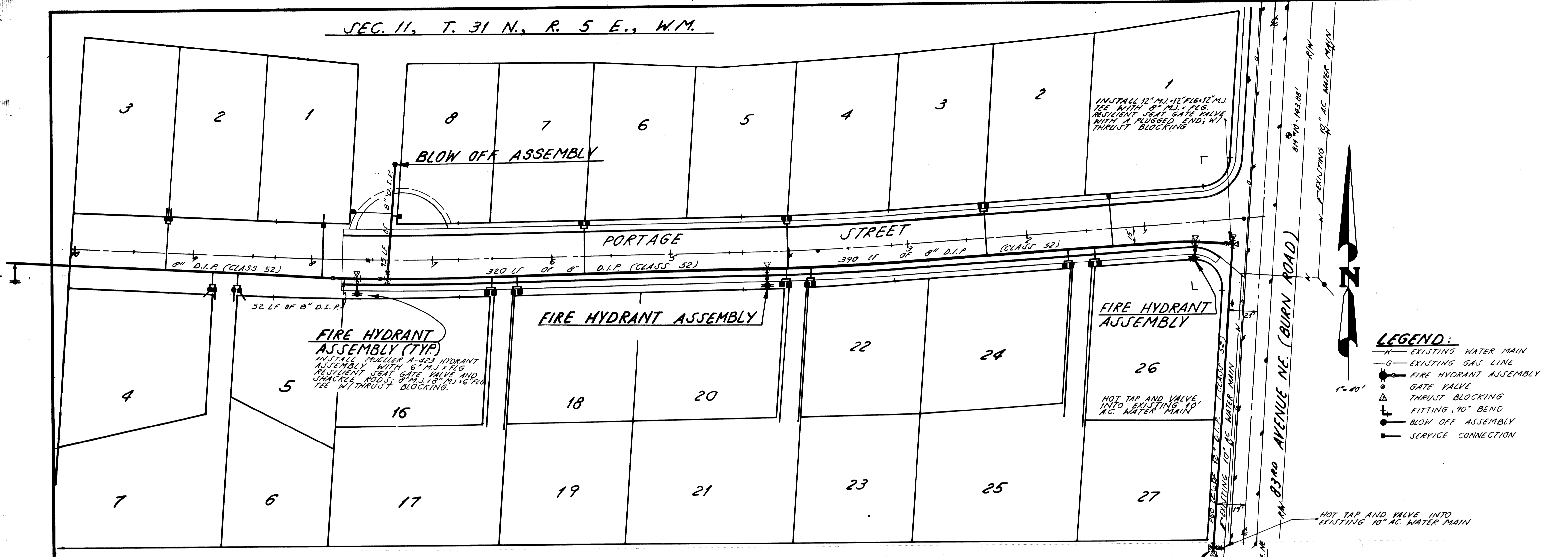


by **Cascade Surveying & Engineering, Inc.**  
 P O BOX 388  
 ARLINGTON, WA  
 436-5551  
 652-7572

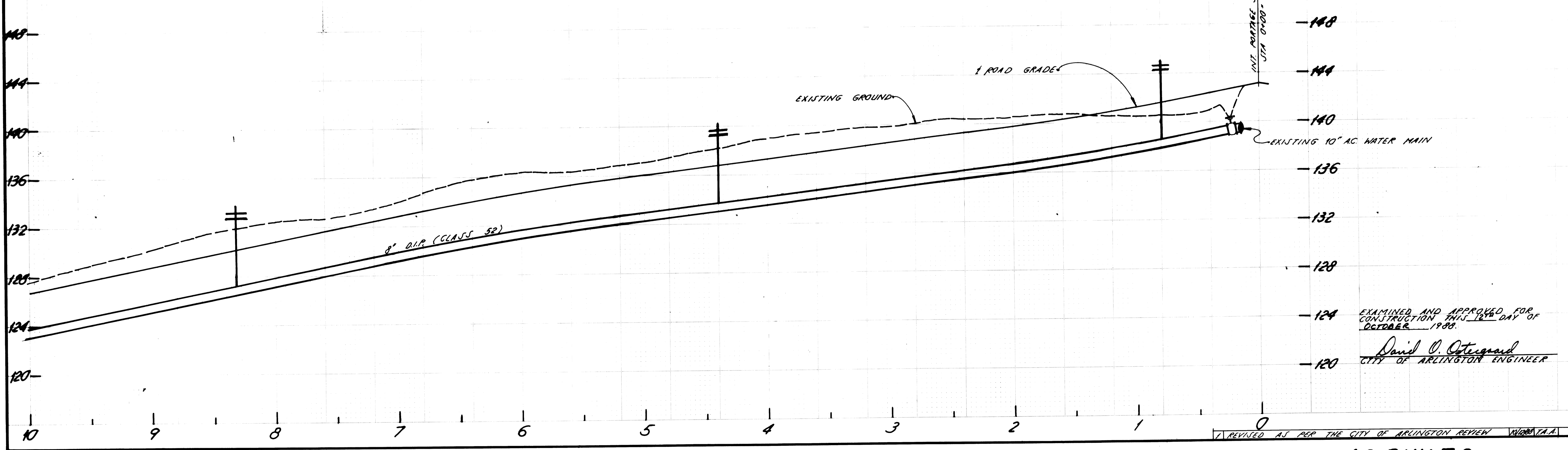
for **KENT PRAIRIE ESTATES  
 ROAD AND STORM SEWER**

EXAMINED AND APPROVED FOR  
 CONSTRUCTION THIS 12th DAY OF  
 OCTOBER 1988.  
*David C. Cotterand*  
 CITY OF ARLINGTON ENGINEER

SEC. 11, T. 31 N., R. 5 E., W.M.

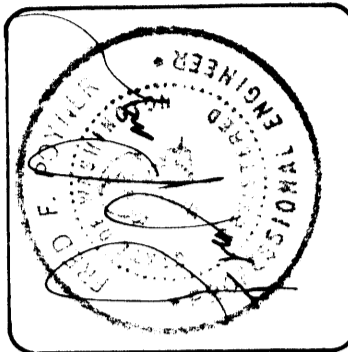


- LEGEND:**
- W — EXISTING WATER MAIN
  - G — EXISTING GAS LINE
  - — FIRE HYDRANT ASSEMBLY
  - ⊕ — GATE VALVE
  - ⊕ — THRUST BLOCKING
  - ⊕ — FITTING, 90° BEND
  - ⊕ — BLOW OFF ASSEMBLY
  - | — SERVICE CONNECTION



EXAMINED AND APPROVED FOR CONSTRUCTION THIS 12<sup>TH</sup> DAY OF OCTOBER 1989.  
*David O. Ostergaard*  
 CITY OF ARLINGTON ENGINEER

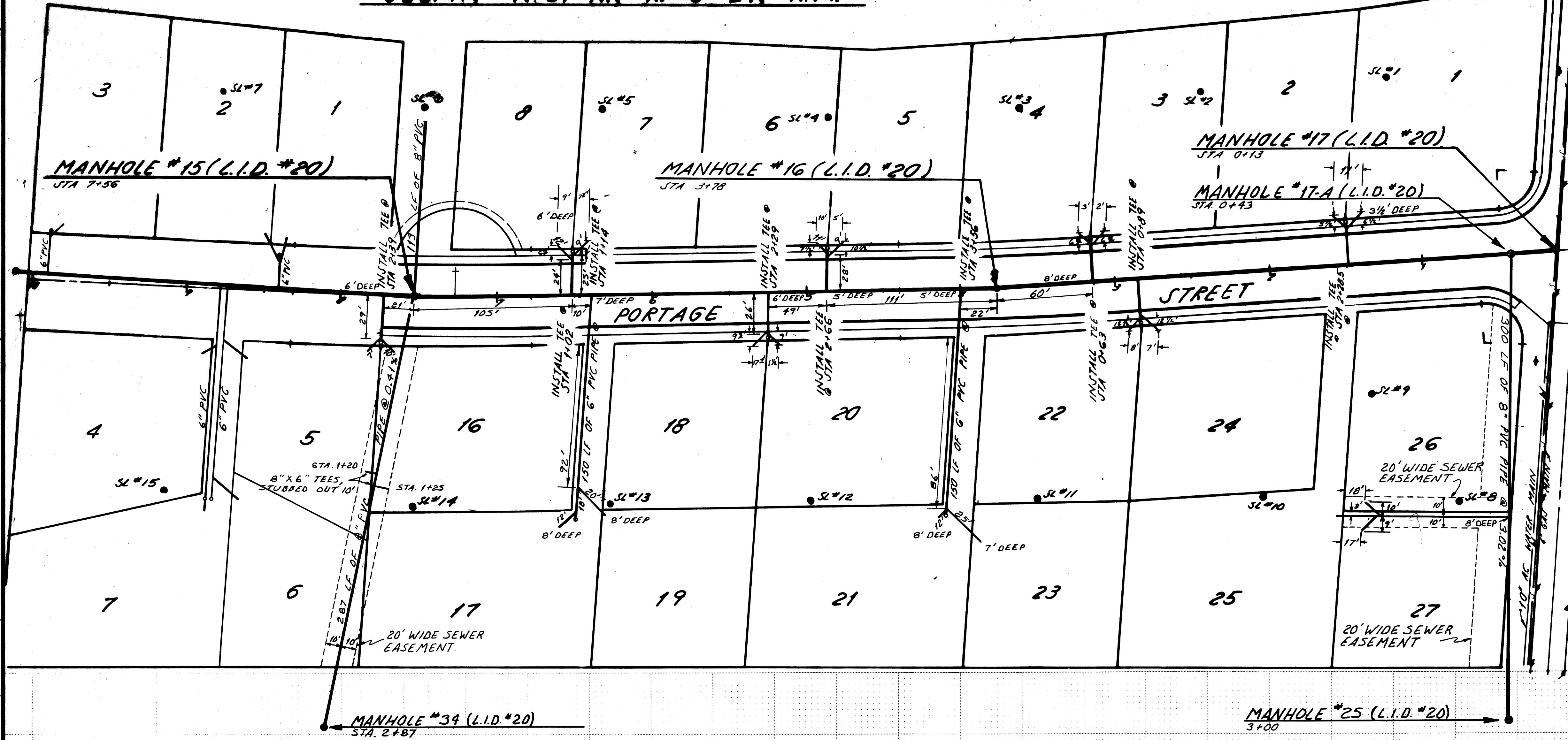
|                    |            |
|--------------------|------------|
| DESIGNED BY        | DATE       |
| DRAWN BY           | DATE       |
| CHECKED BY         | DATE       |
| SCALE - HORIZONTAL | 1" = 40'   |
| SCALE - VERTICAL   | 1" = 4'    |
| JOB NUMBER         | #6592      |
| FIELD BOOK         |            |
| COUNTY             | WASHINGTON |



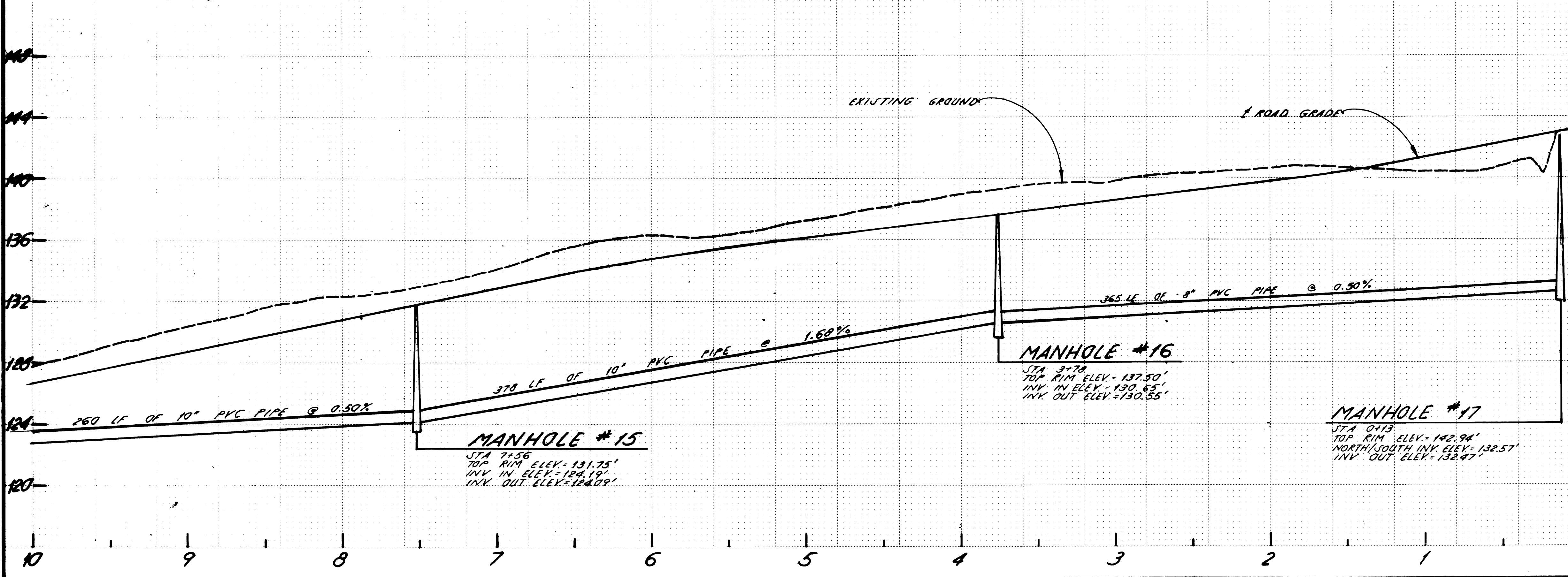
by **Cascade Surveying & Engineering, Inc.**  
 438-8881  
 888-7878  
 P O BOX 388  
 ARLINGTON, WA

for **KENT PRAIRIE ESTATES WATER SYSTEM**

AS-BUILTS 5-13-92 8-30-89



**LEGEND:**  
 ● SANITARY SEWER MANHOLE  
 ○ SERVICE LATERAL W/CLEANOUT  
 ● SOIL LOG HOLES



EXAMINED AND APPROVED FOR CONSTRUCTION THIS 12th DAY OF OCTOBER, 1988.  
 David O. Peterson  
 CITY OF ARLINGTON ENGINEER

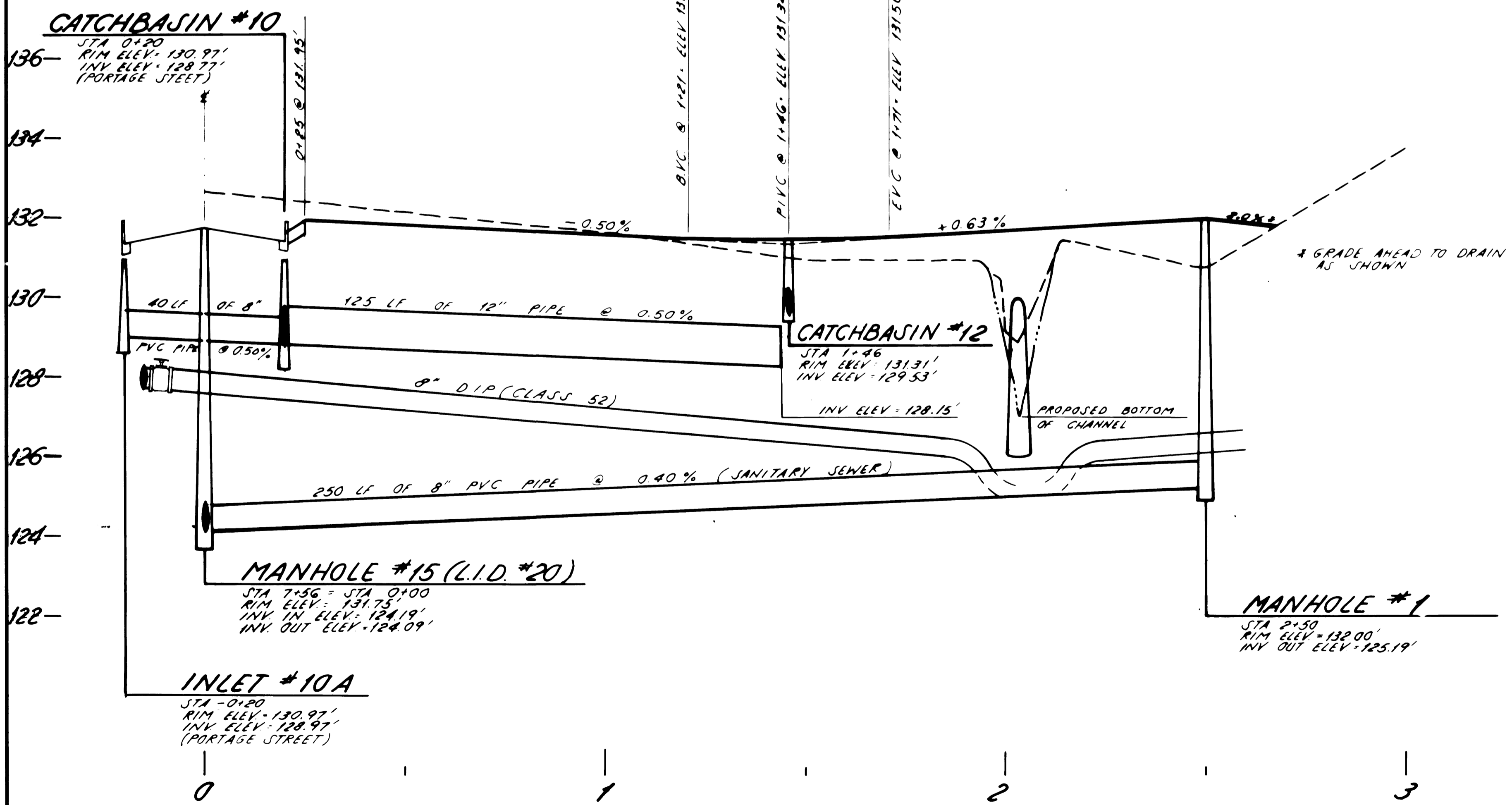
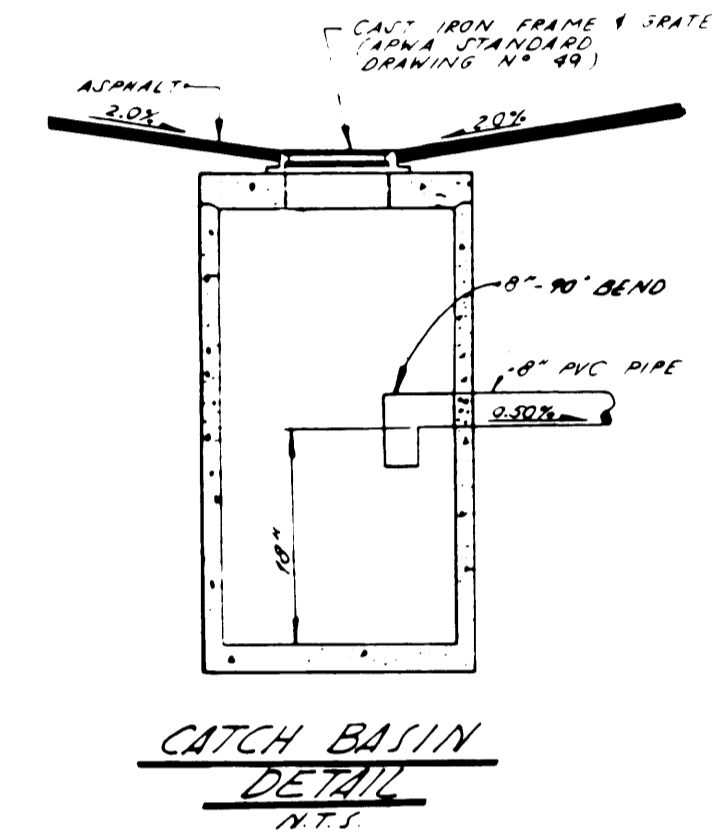
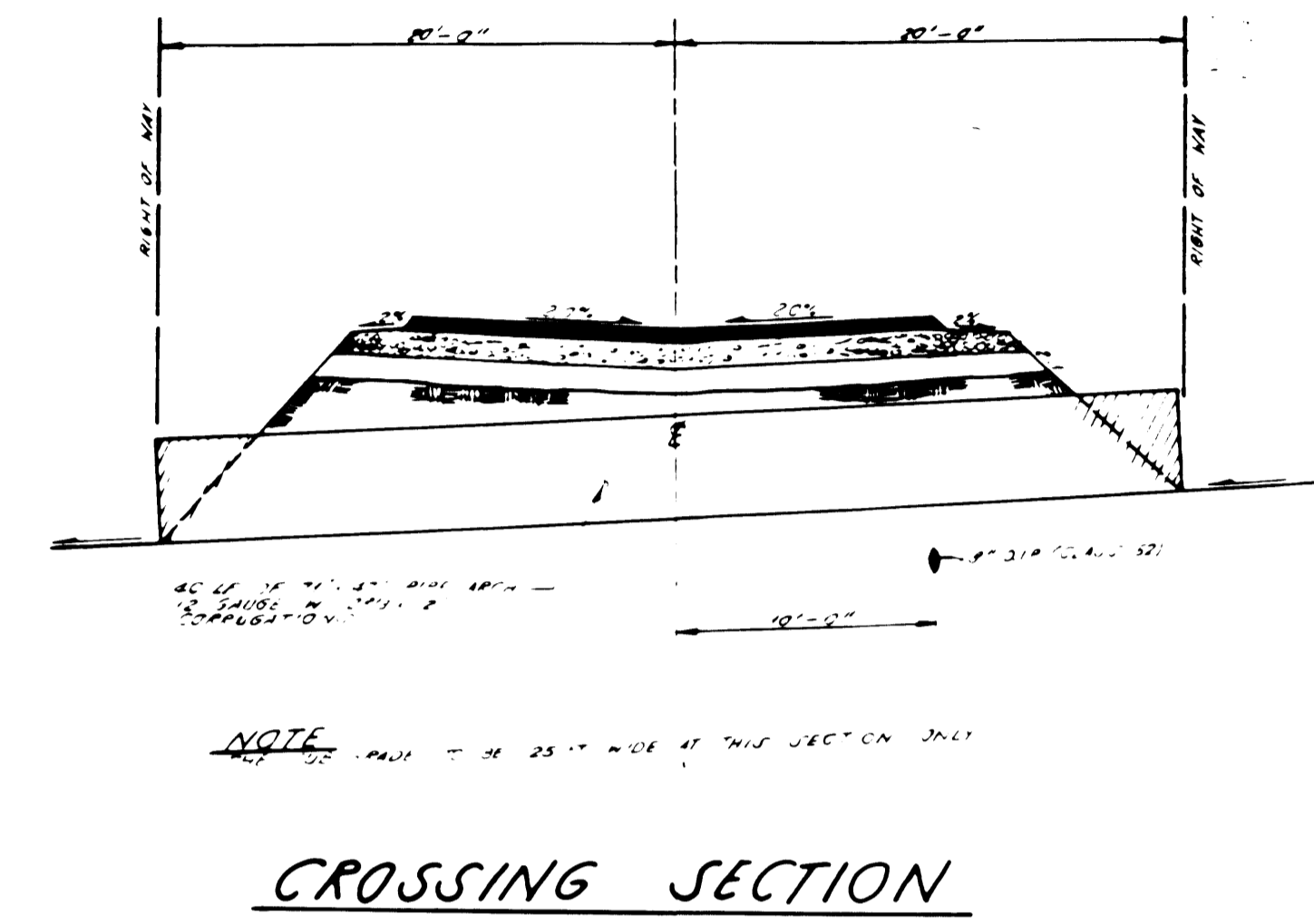
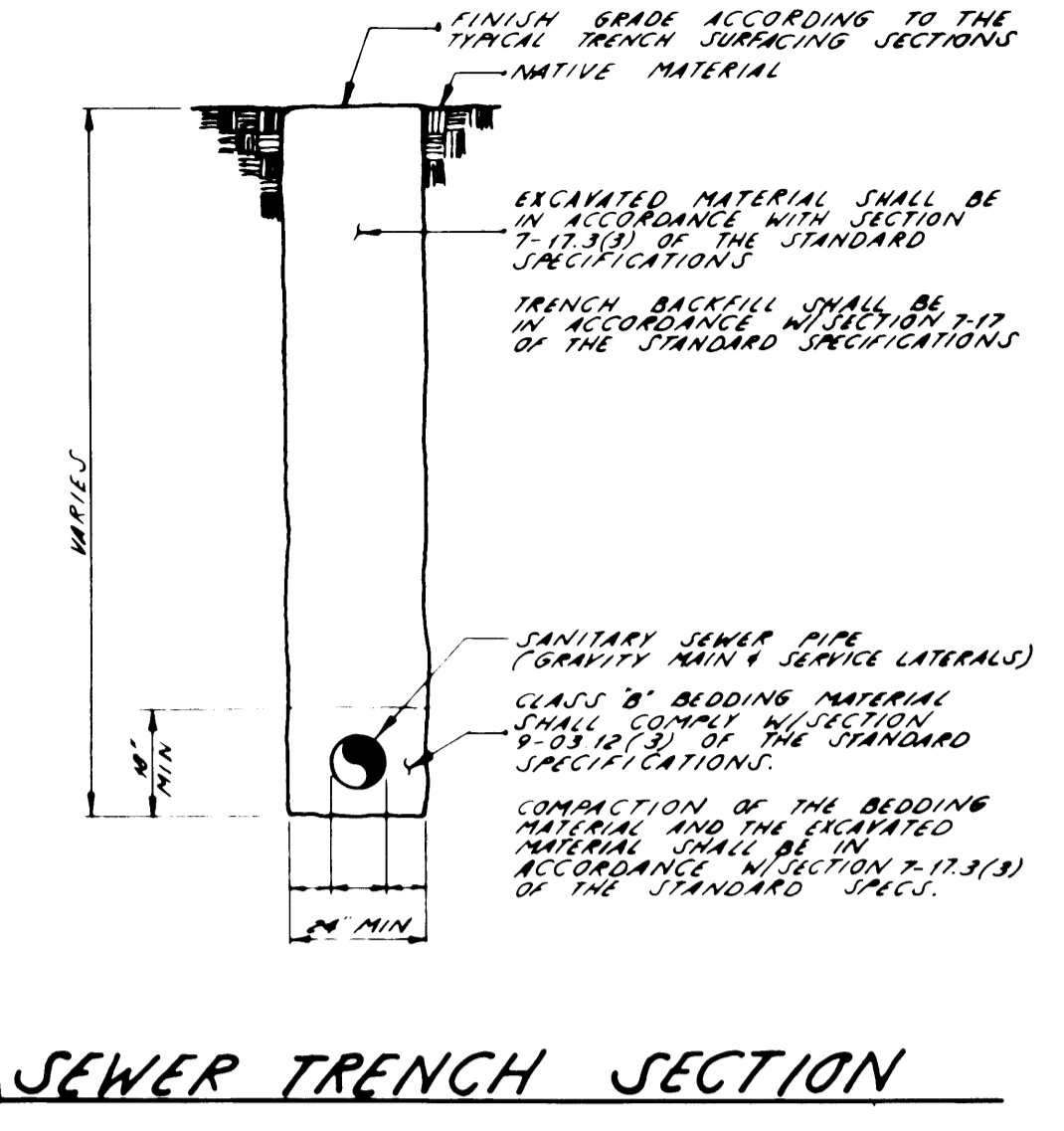
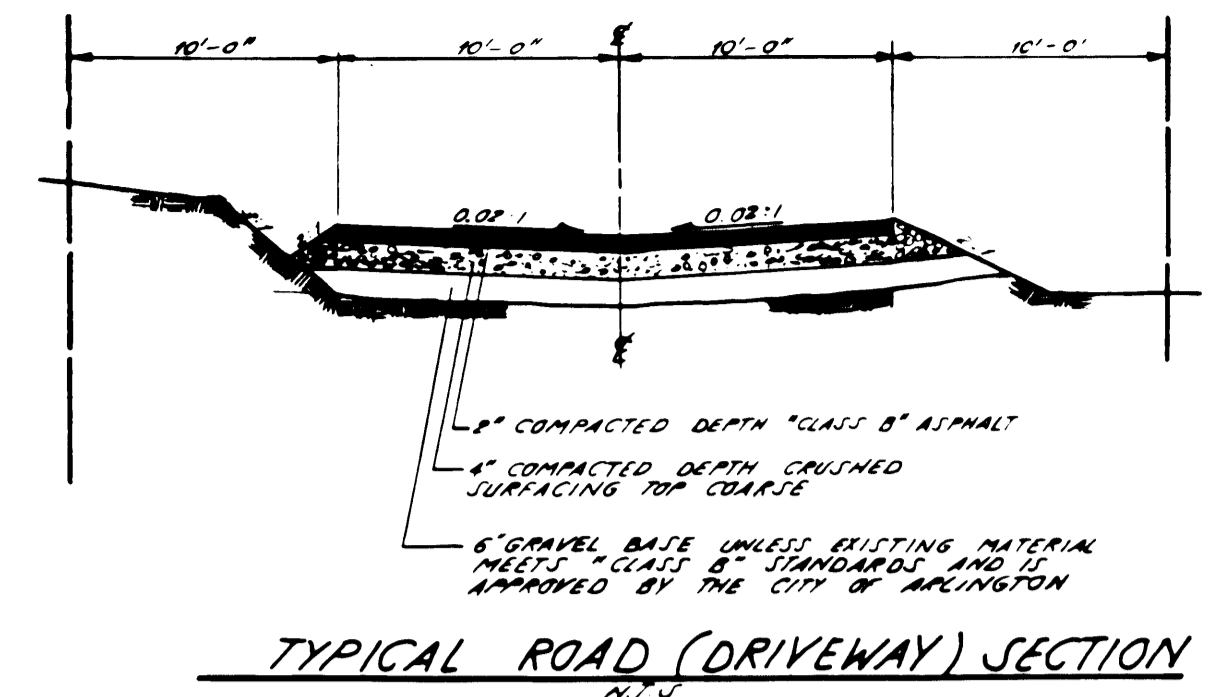
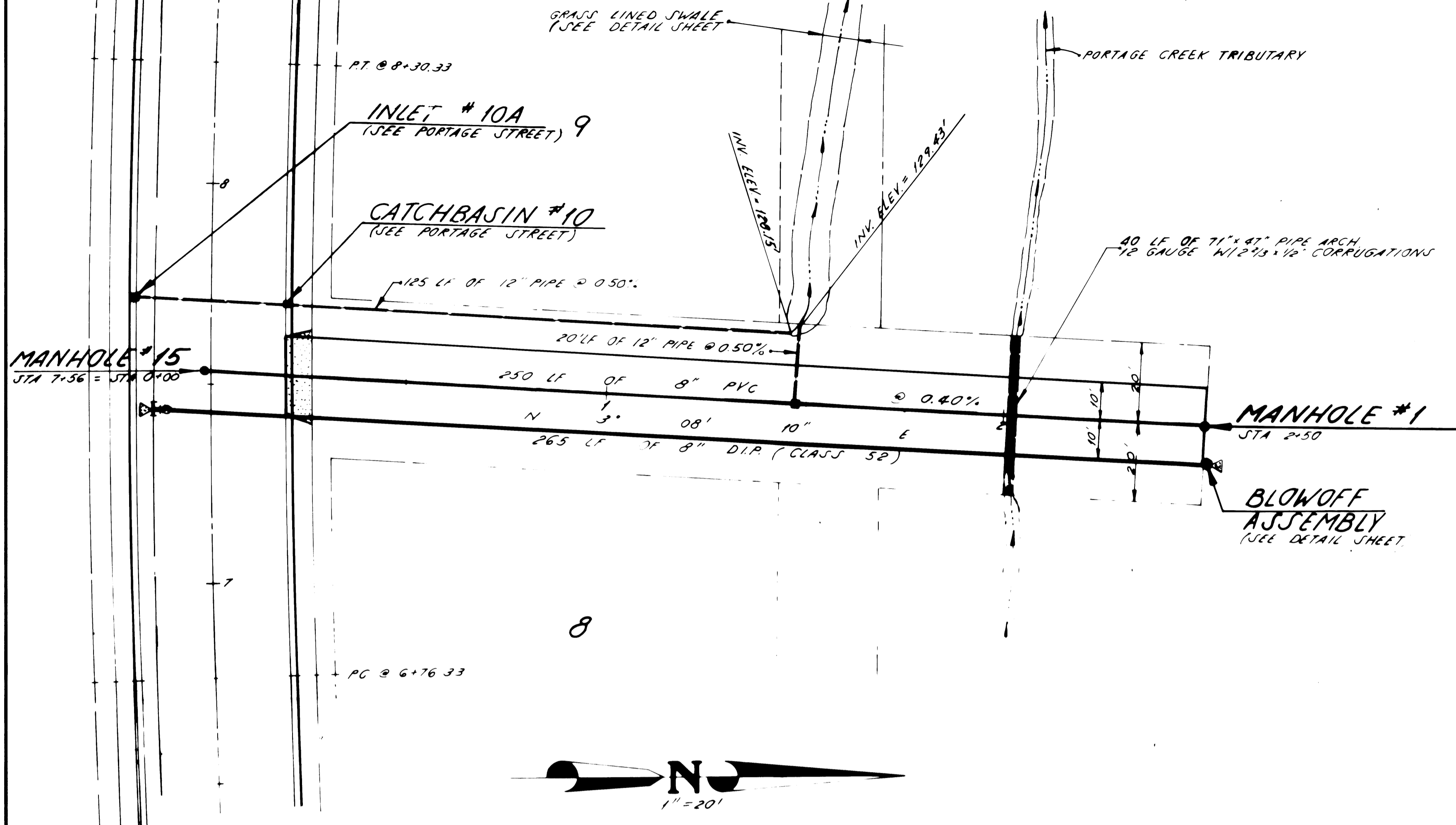
|               |    |
|---------------|----|
| DATE REVISION | BY |
|               |    |
|               |    |
|               |    |
|               |    |



by **Cascade Surveying & Engineering, Inc.**  
 4300 95th Ave. S.E.  
 Everett, WA 98203  
 (206) 835-7070

for **KENT PRAIRIE ESTATES**  
**SANITARY SEWER**

SEC. 11, T. 31 N., R. 5 E., W.M.



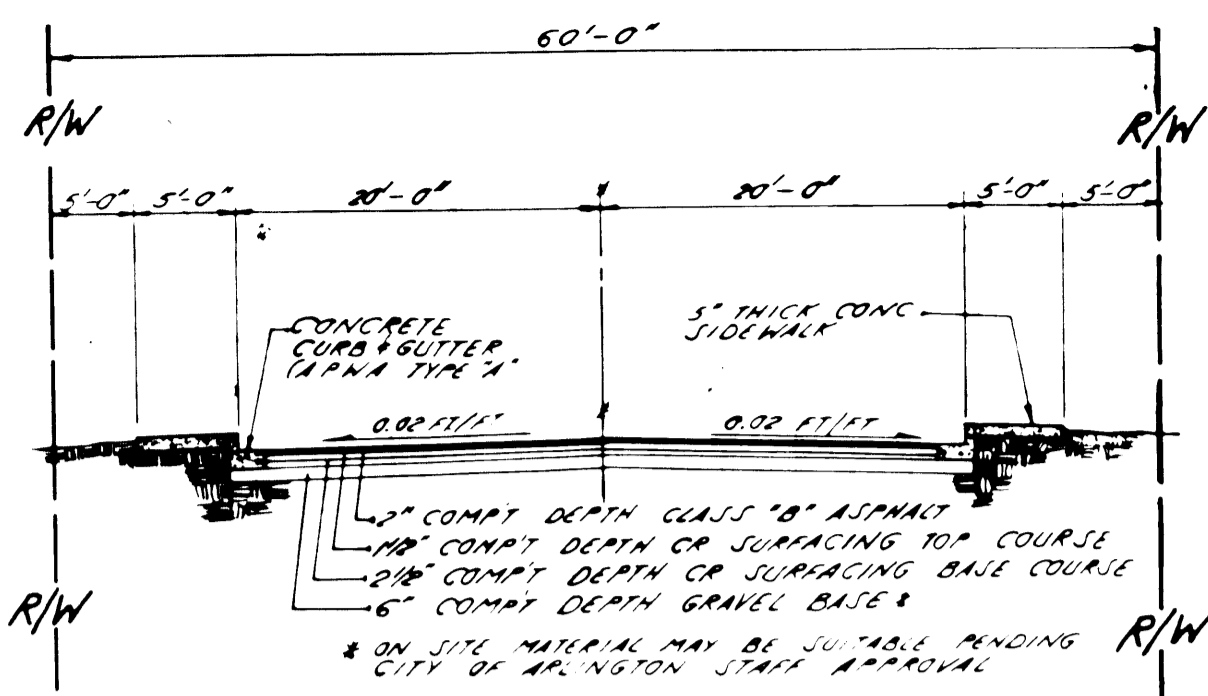
DESIGNED BY: MOORE DATE: 8/10/88  
 DRAWN BY: ADKINS DATE: 8/11/88  
 CHECKED BY: DEWOLF DATE: 11-20-88  
 SCALE: HORIZONTAL: 1"=20'  
 VERTICAL: 1"=2'  
 JOB NUMBER: #6592  
 FIELD BOOK: ARZ 37  
 COUNTY: WASHINGTON

by Cascade Surveying & Engineering, Inc.  
 ARLINGTON 435-5551 652-7572  
 MARYSVILLE 659-7654 259-0778

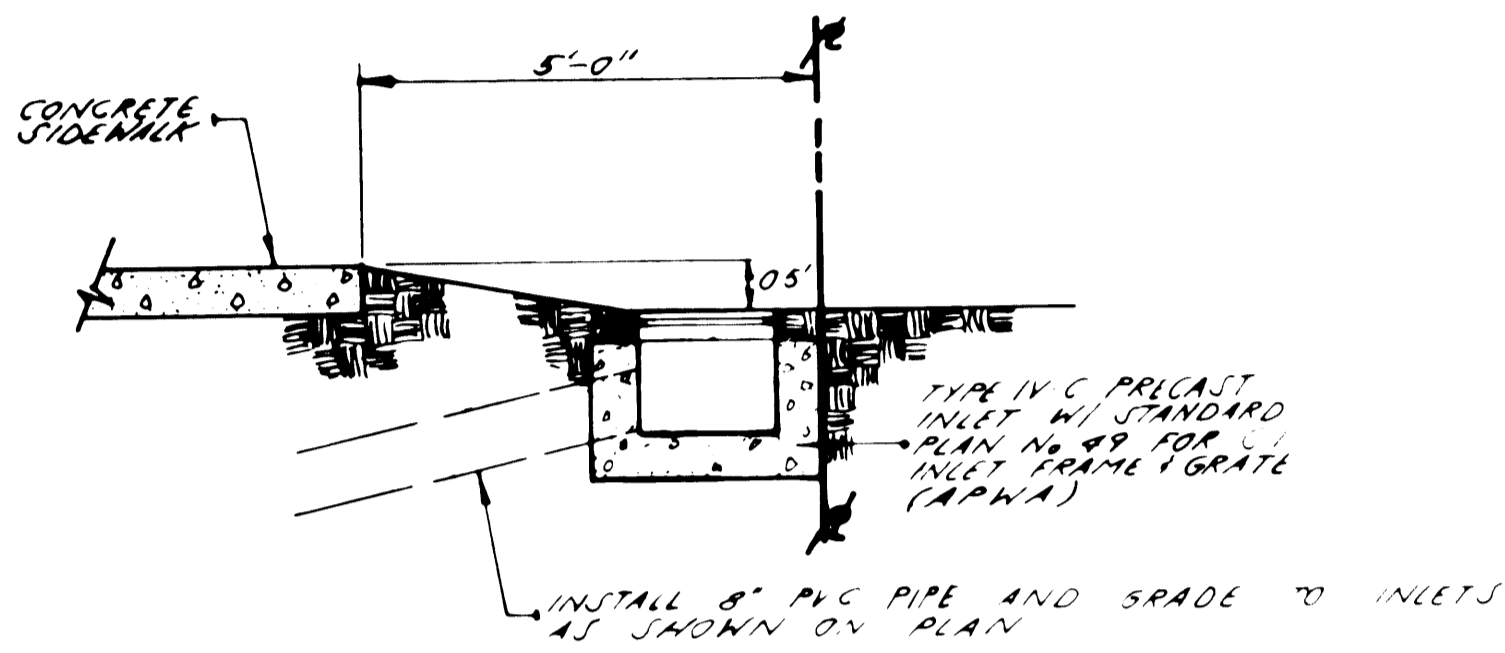
for KENT PRAIRIE ESTATES  
 NORTH ACCESS ROAD  
 FOR LOTS 28 AND 29

10/12/88 D.O.

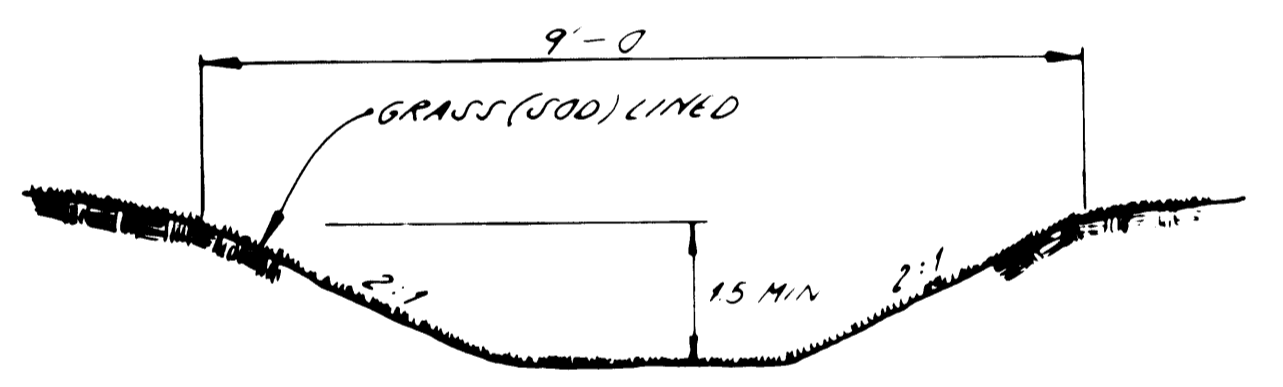
# 50F6  
 # 6592



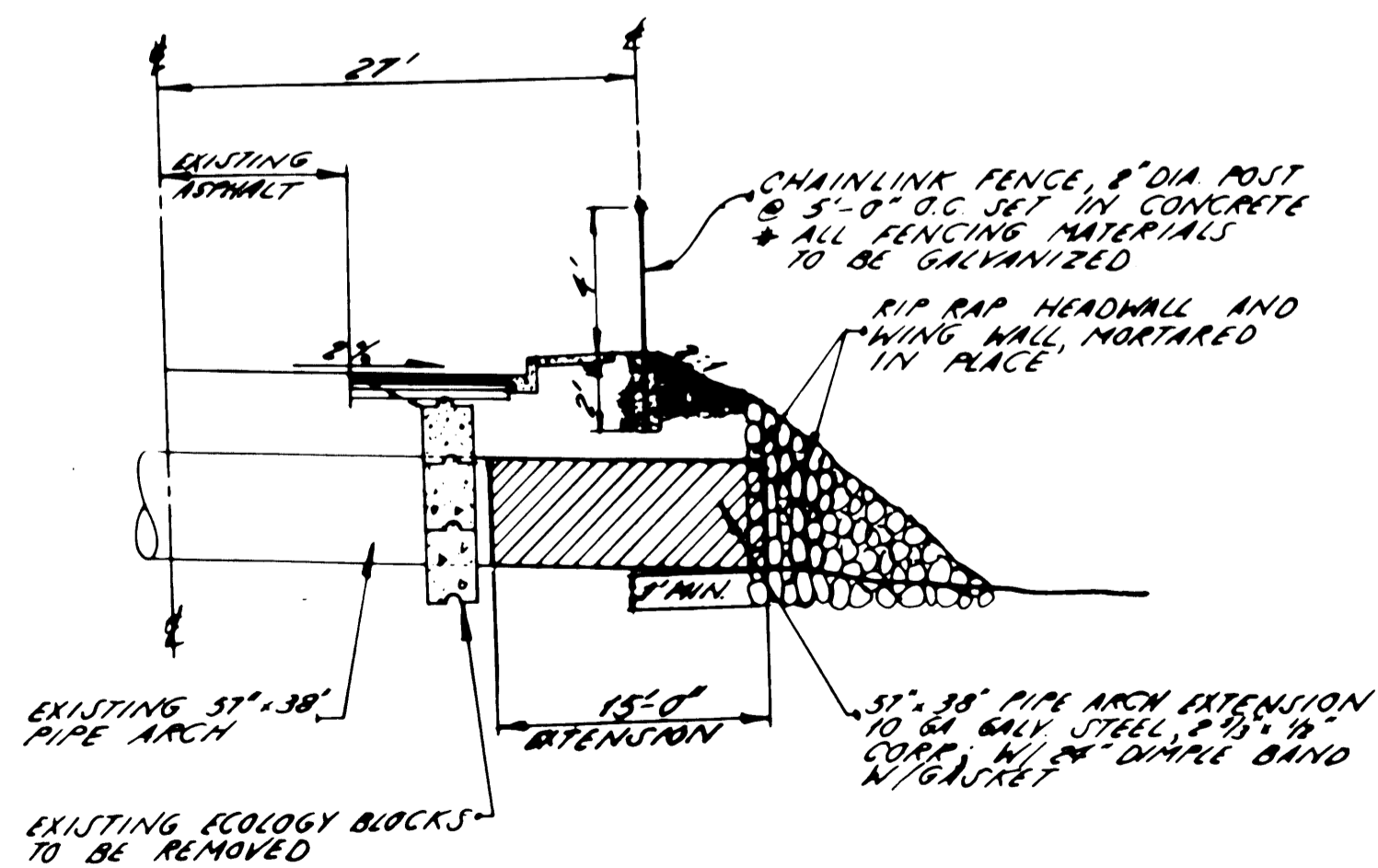
ROAD SECTION @ PORTAGE ST.



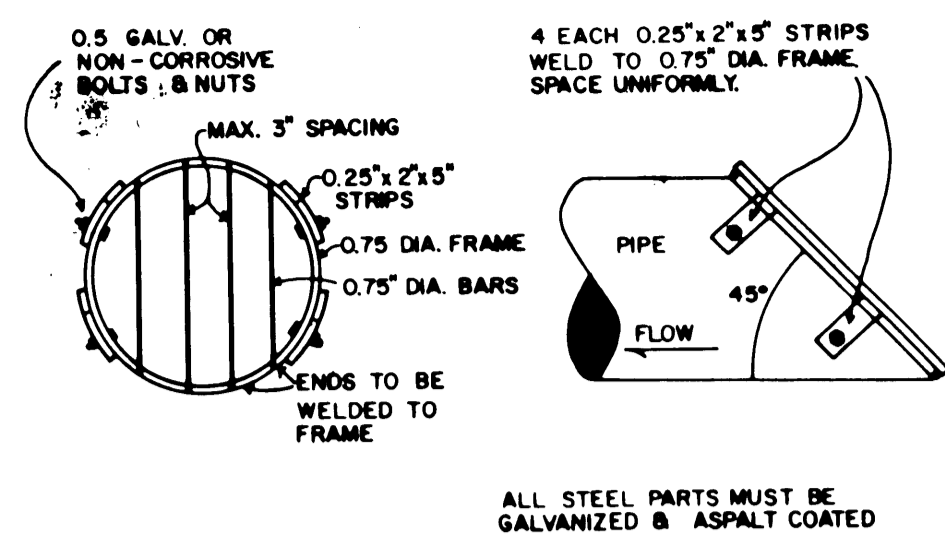
PRECAST INLET DETAIL



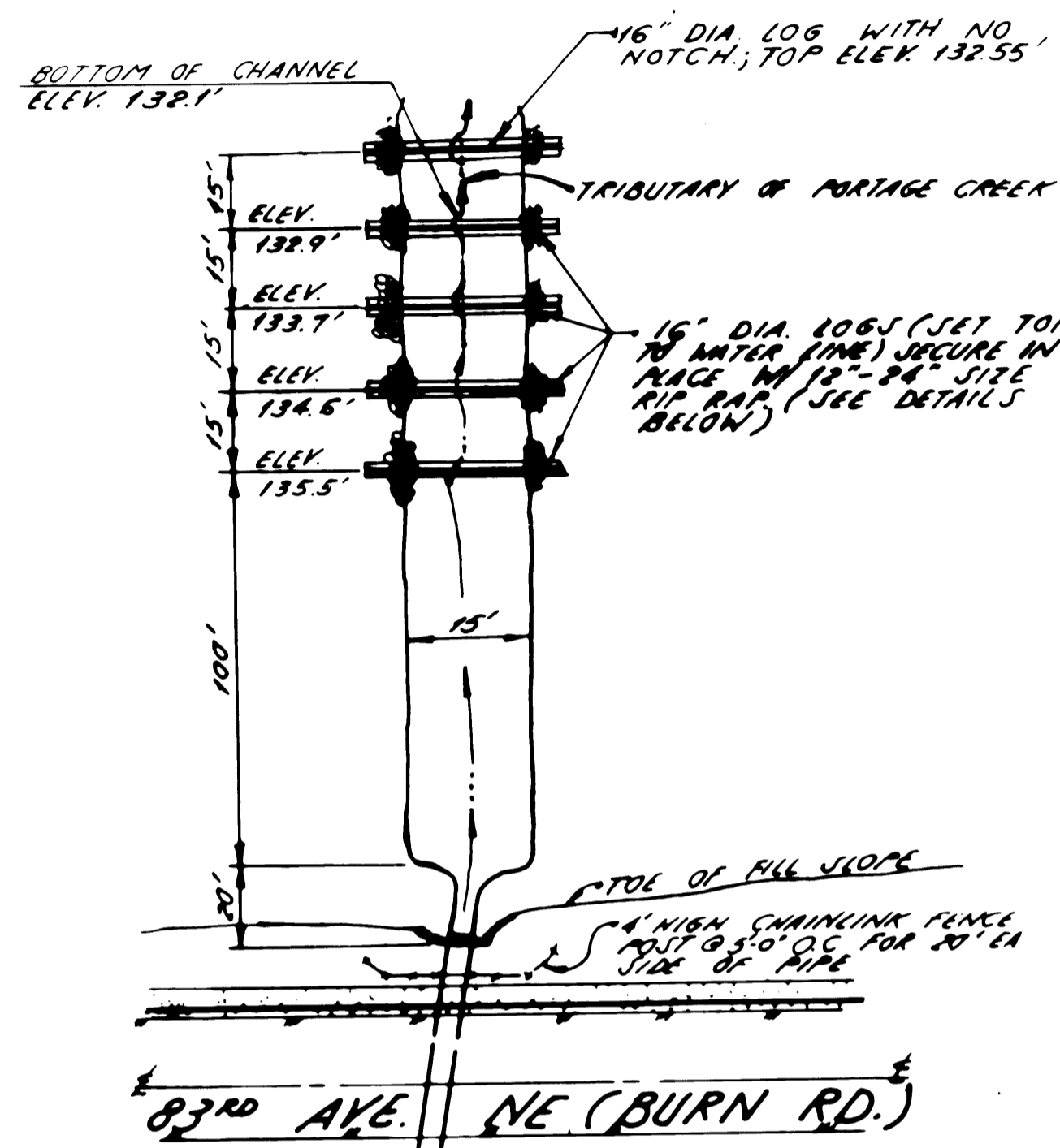
GRASS SWALE DETAIL (BIO-FILTER)



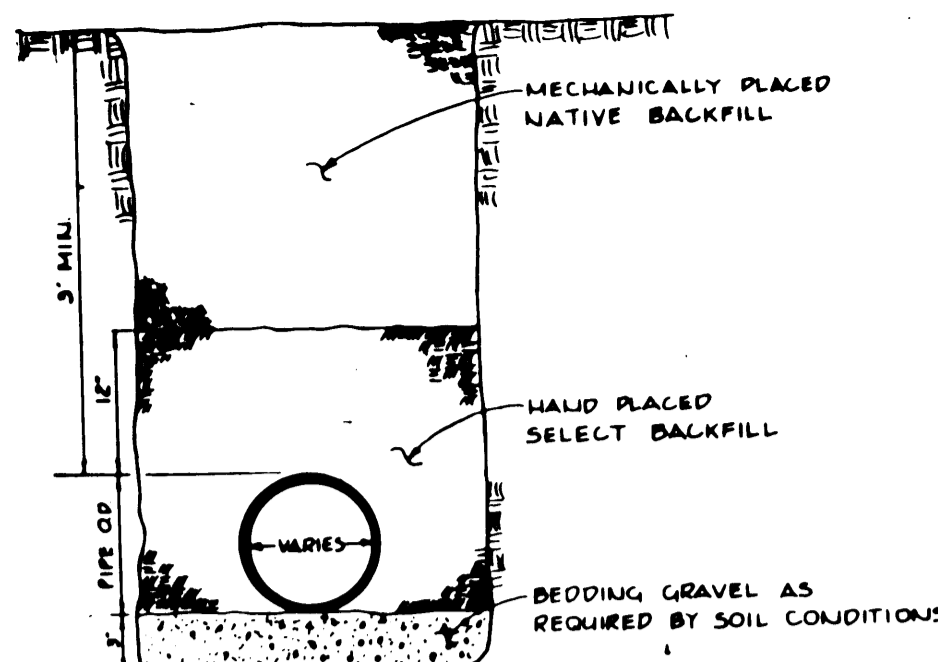
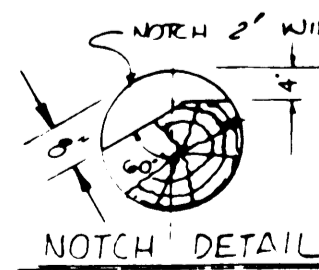
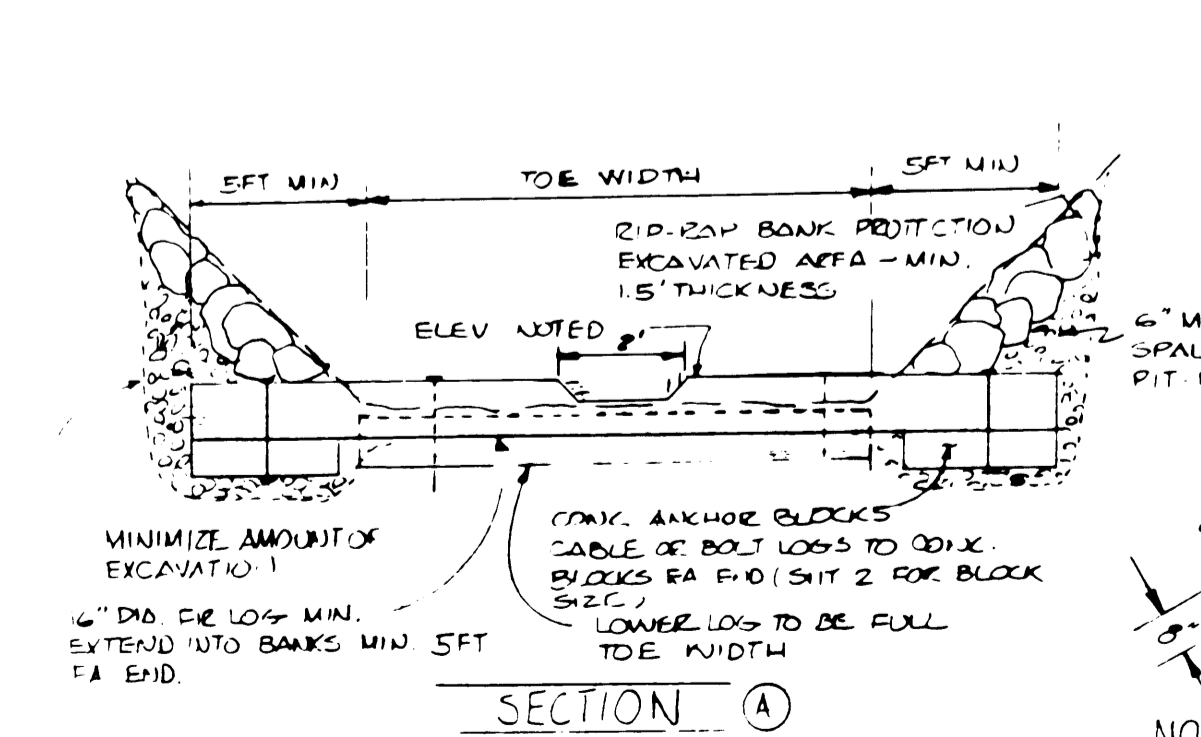
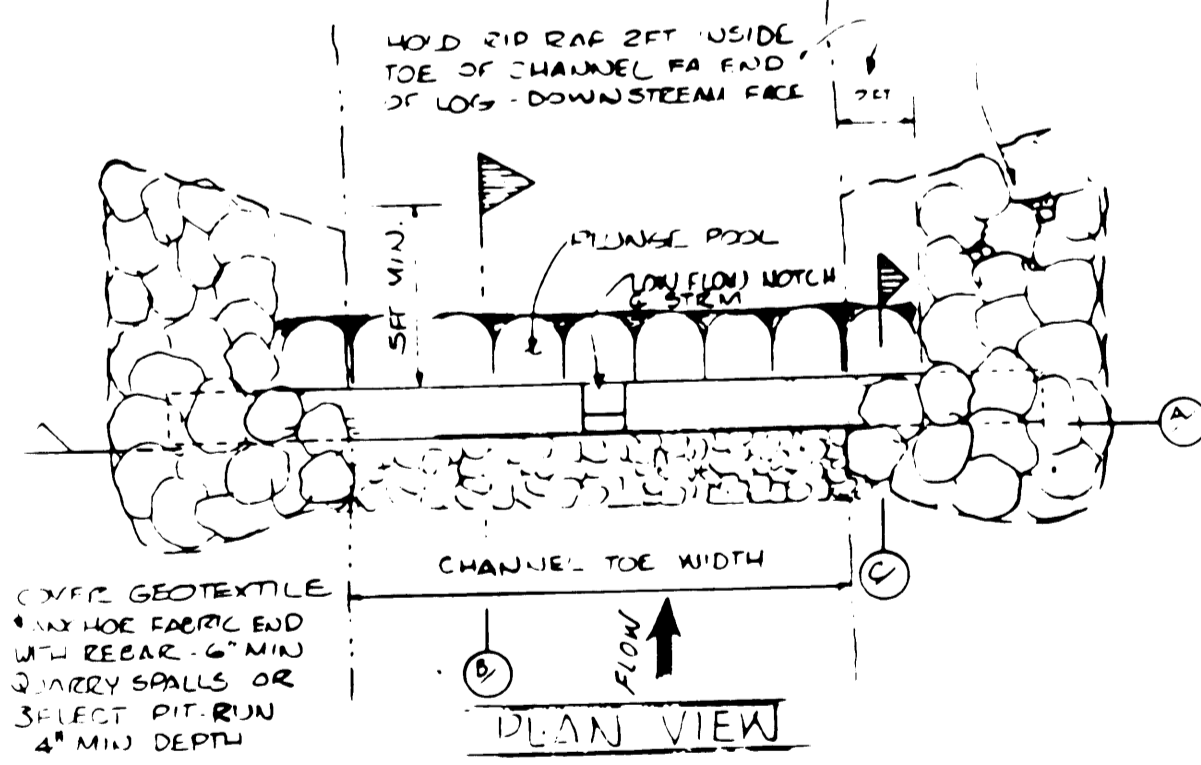
PIPE EXTENSION W/ FENCE DETAIL



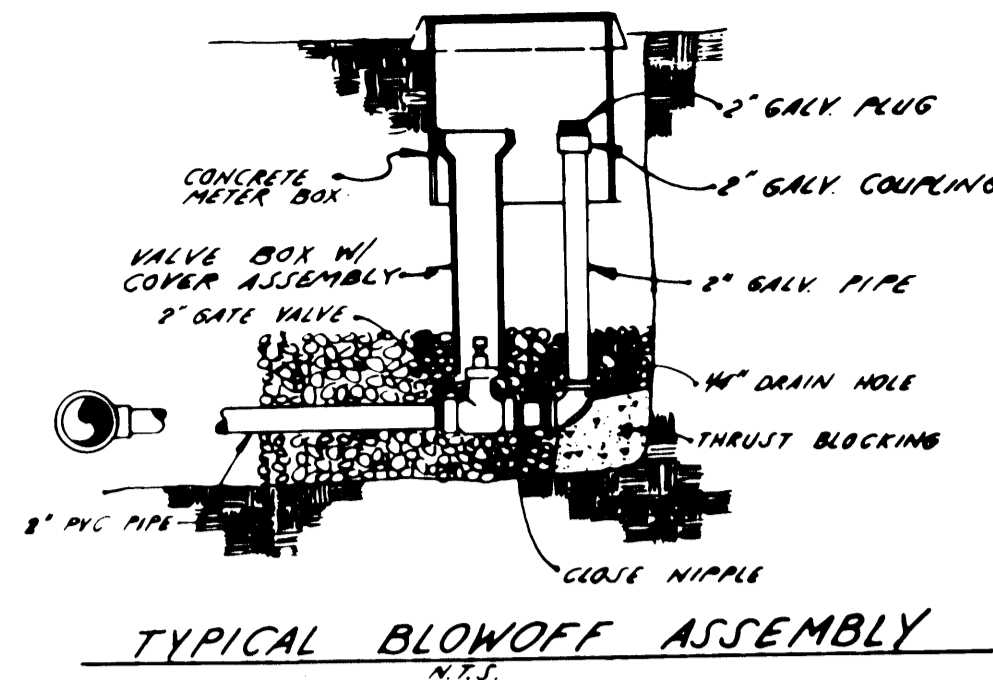
TYPICAL DEBRIS BARRIER



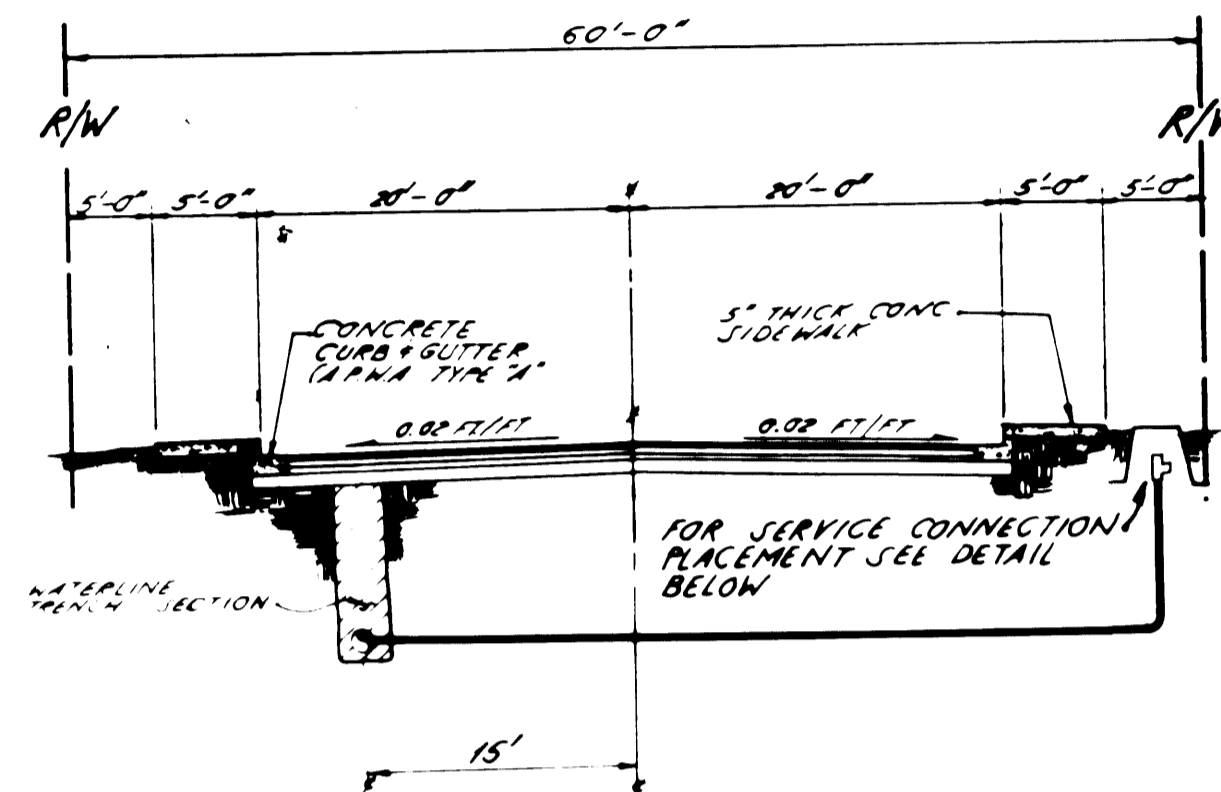
SILTATION POND



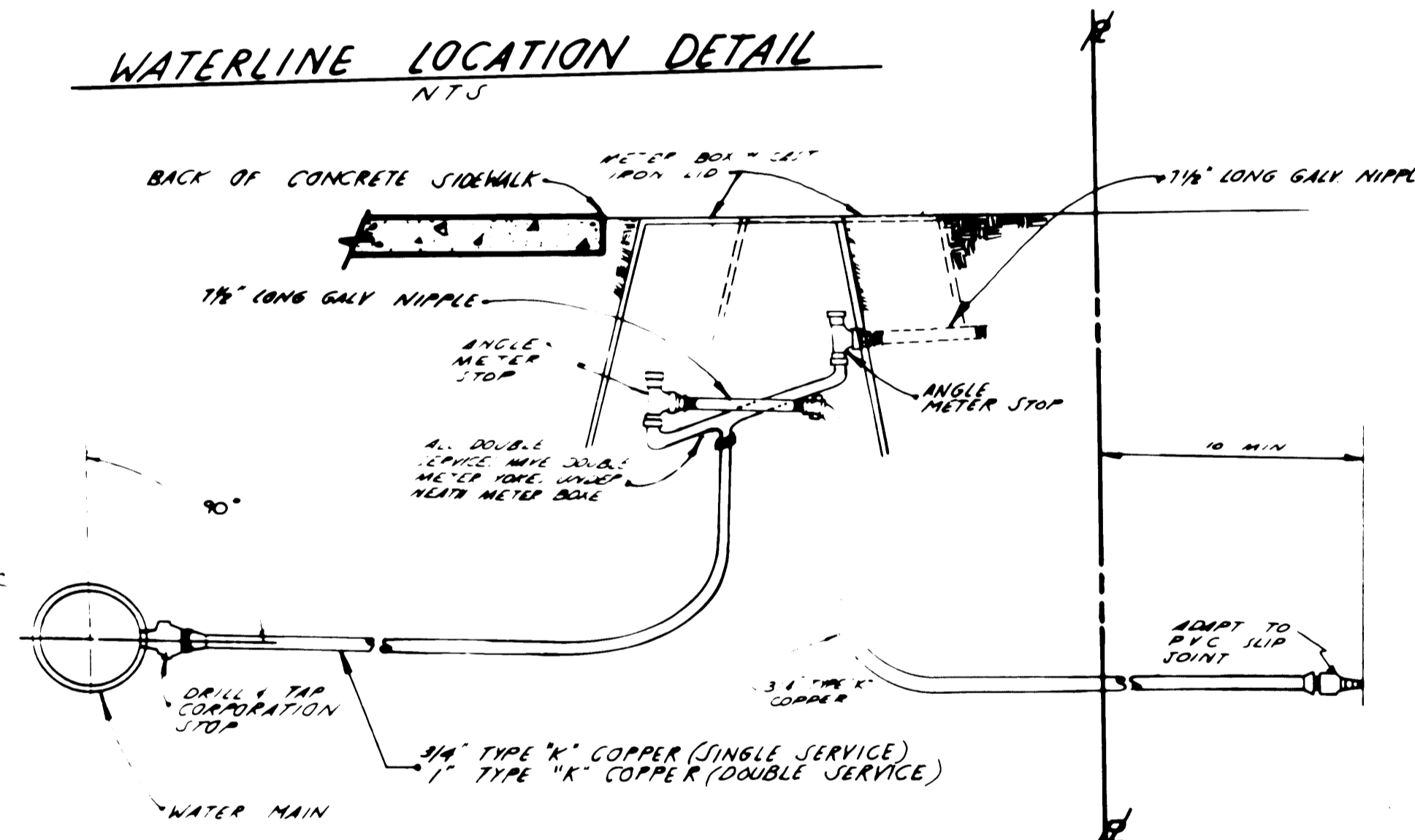
WATERLINE TRENCH DETAIL



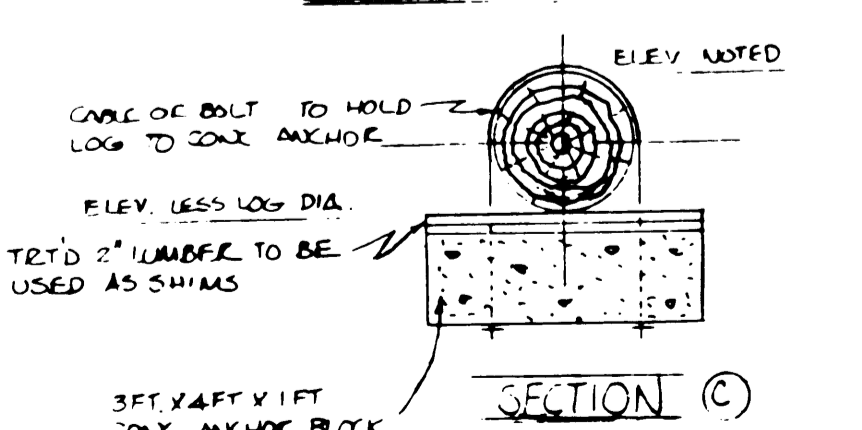
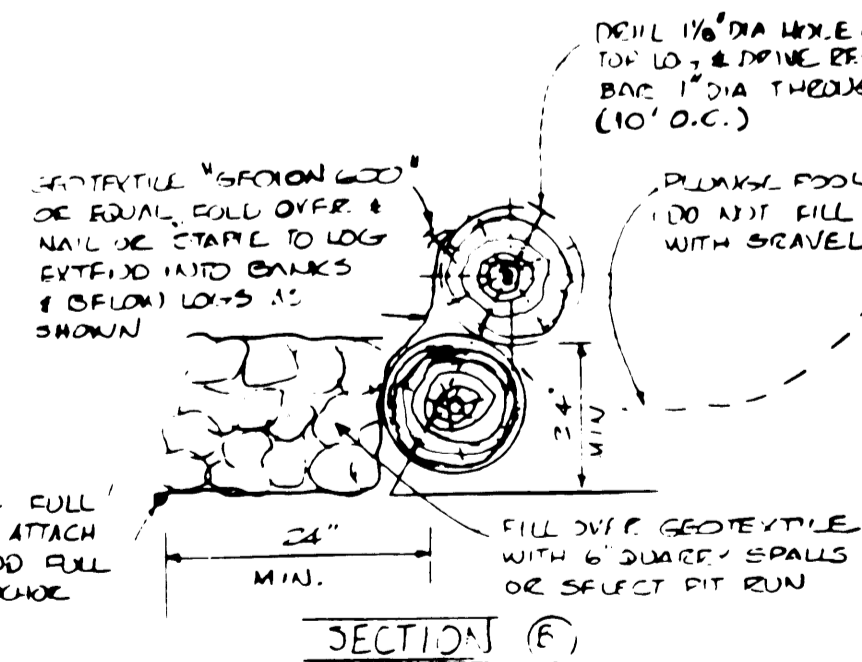
TYPICAL BLOWOFF ASSEMBLY



WATERLINE LOCATION DETAIL



SERVICE CONNECTION



EXAMINED & APPROVED FOR CONSTRUCTION THIS 12TH DAY OF October 1988.

David O. Ortega  
CITY OF ARLINGTON ENGINEER

GENERAL NOTES

1. ALL WORK AND MATERIALS SHALL BE IN ACCORDANCE WITH THE WASHINGTON STATE DEPARTMENT OF TRANSPORTATION 1988 STANDARD SPECIFICATIONS FOR ROAD, BRIDGE AND MUNICIPAL CONSTRUCTION, AND THE A.P.W.A. SPECIFICATIONS WHEN NOT COVERED BY CITY OF ARLINGTON STANDARDS AND SPECIFICATIONS.
2. ALL WORK WITHIN THE SITE AND CITY RIGHT-OF-WAY SHALL BE SUBJECT TO THE INSPECTION OF THE CITY ENGINEER OR HIS DESIGNATED REPRESENTATIVE.
3. PRIOR TO ANY SITE WORK, THE CONTRACTOR SHALL NOTIFY THE CITY UTILITIES DEPARTMENT AT 415-5285 TO SET UP SCHEDULING. DUE TO FIELD CHANGES (REVISIONS), ENGINEERED ASBUILTS MAY BE REQUIRED PRIOR TO SITE APPROVAL.
4. ALL SITE WORK MUST COMPLY TO CHAPTER 20 OF THE BILLING CODE.
5. THE CONTRACTOR SHALL BE RESPONSIBLE FOR VERIFYING LOCATION OF EXISTING UTILITIES PRIOR TO CONSTRUCTION. UTILITIES SHOWN HEREON ARE FOR THE PURPOSE OF ASSISTING THE CONTRACTOR IN LOCATING SAID FACILITIES. NO WARRANTY IS EXPRESSED OR IMPLIED AS TO THE ACCURACY OR COMPLETION SHOWN. THE CONTRACTOR SHALL CALL DIAL-DIG 48 HOURS PRIOR TO CONSTRUCTION AND NOTIFY THE CITY UTILITIES DEPARTMENT AT 415-5285.
6. THE CONTRACTOR SHALL BE RESPONSIBLE FOR MAINTAINING AND/OR REPAIRING ASPHALT AND GRAVEL SURFACES DISTURBED AS A RESULT OF THIS CONSTRUCTION UNTIL THEY ARE ACCEPTED BY THE CITY.
7. THE CONTRACTOR SHALL BE RESPONSIBLE FOR OBTAINING ALL PERMITS FOR UTILITY CONSTRUCTION.
8. ALL PIPE SHALL BE PLACED ON STABLE FIRM GROUND. IN THE EVENT THAT THE CITY ENGINEER FINDS THE EXISTING FOUNDATION UNSATISFACTORY, THERE SHALL BE PROPERLY REINFORCED AND PROTECTED TO SHADE WITH SAND/GRAVEL. NO SHED ROCK OR OTHER UNSUITABLE MATERIAL. NEVER INSTALL PIPE ON SOIL, FROZEN EARTH, LARGE BROTHERS OR ROCK.
9. THE BACKFILL SHALL BE PLACED 12" MIN. ON BOTH SIDES OF THE PIPE OR PIPE ARCH. IN TRENCHES WITH 12" MIN. COVER. EACH LAYER SHALL BE MAXIMUM 6" THICK. EACH LAYER SHALL BE TAMPED. THREE THREE-FOURTHS" COMPACT LAYERS MUST EXTEND 12" MIN. ON EACH SIDE OF THE PIPE OR ARCH. THE TOP OF THE CHANNEL MULTILAYER SHALL BE AT LEAST 12" MIN. FROM THE TOP OF THE CHANNEL. THE CHANNEL SHALL BE PROTECTED BY SAND/GRAVEL 12" MIN. AND SHALL BE PROTECTED BY SAND/GRAVEL 12" MIN.
10. ALL GRATES, COVERS AND MANHOLES SHALL BE DEEPERSED 12" FEET BELOW FAYMENT LEVEL.
11. ALL TRENCHES SHALL BE PROTECTED BY SAND/GRAVEL 12" MIN.
12. THE CONTRACTOR SHALL BE RESPONSIBLE FOR PROTECTING ALL EXISTING UTILITIES, STRUCTURES, TREES AND LANDSCAPE. ALL EXPOSURE SHALL BE PROTECTED BY SAND/GRAVEL 12" MIN. AND SHALL BE PROTECTED BY SAND/GRAVEL 12" MIN.
13. ALL TRENCHES SHALL BE PROTECTED BY SAND/GRAVEL 12" MIN. AND SHALL BE PROTECTED BY SAND/GRAVEL 12" MIN.
14. TRENCH BACKFILL SHALL BE PROTECTED BY SAND/GRAVEL 12" MIN. AND SHALL BE PROTECTED BY SAND/GRAVEL 12" MIN.
15. ALL EARTH WORK SHALL BE PERFORMED IN ACCORDANCE WITH THE CITY OF ARLINGTON STANDARDS.
16. TYPE AND FILL SIZES EXCEPT A MAXIMUM 3/4" FEET HORIZONTAL TO NE FOOT VERTICAL. A BODY OF COMPACTED RETENTION WALLS WILL BE REQUIRED. ALL ROCK RETAINING WALLS SHALL BE TO FOLLOW CITY SPECIFICATIONS.
17. VEGETATION SHALL BE ESTABLISHED IN AREAS DISTURBED OR IN AREAS OF CONSTRUCTION AS NECESSARY TO MINIMIZE EROSION.
18. LOT LINES SHOWN HEREON ARE APPROXIMATE. ACTUAL PLATTER DIMENSIONS AND OR DEED LOCATIONS SHALL TAKE PRECEDENCE.
19. TESTING SHALL BE AS SET FORTH BY THE CITY OF ARLINGTON.
20. PIPE SPECIFICATIONS:

| STEEL    |            |                         |           |
|----------|------------|-------------------------|-----------|
| GAGE     | PIPE       | ARCH                    | RAND SIZE |
| 14       | 12" x 1/4" | 12" x 1/4" x 12" x 1/4" | 12"       |
| 14       | 4" x 1/4"  | 4" x 1/4" x 4" x 1/4"   | 18"       |
| 14       | 4" x 1/4"  | 4" x 1/4" x 4" x 1/4"   | 24"       |
| ALUMINUM |            |                         |           |
| GAGE     | PIPE       | ARCH                    | RAND SIZE |
| 16       | 12" x 1/4" | 12" x 1/4" x 12" x 1/4" | 12"       |
| 14       | 4" x 1/4"  | 4" x 1/4" x 4" x 1/4"   | 18"       |
| 14       | 4" x 1/4"  | 4" x 1/4" x 4" x 1/4"   | 24"       |

ALL NON-FERROUS METAL PIPE SHALL HAVE NEOPRENE GASKETS AT THE JOINTS.

PIPE SHALL MEET THE REQUIREMENTS OF ASTM DESIGNATION F 1004 FOR 1/4" THICKNESS THINWALL STEEL PIPE.

WATER MAINS SHALL BE PROTECTED BY SAND/GRAVEL 12" MIN. AND SHALL BE PROTECTED BY SAND/GRAVEL 12" MIN.

WATER SERVICES SHALL BE PROTECTED BY SAND/GRAVEL 12" MIN.

THE WATER MAINS SHALL BE PROTECTED BY SAND/GRAVEL 12" MIN.

THE CITY WILL BE RESPONSIBLE FOR PROTECTING THE EXISTING UTILITIES, STRUCTURES, TREES AND LANDSCAPE. ALL EXPOSURE SHALL BE PROTECTED BY SAND/GRAVEL 12" MIN. AND SHALL BE PROTECTED BY SAND/GRAVEL 12" MIN.

ALL UTILITIES AND MATERIALS SHALL BE PROTECTED BY SAND/GRAVEL 12" MIN. AND SHALL BE PROTECTED BY SAND/GRAVEL 12" MIN.

ALL WATER MAINS SHALL HAVE A MINIMUM COVER OF 12" MIN.

THRUST BLOCKING IS REQUIRED AT CORNER JOINTS AND AT ALL POINTS WHERE THE CITY UTILITIES DEPARTMENT.

PIPE HORIZONTALS SHALL BE COVERED WITH SAND/GRAVEL 12" MIN. AND SHALL BE PROTECTED BY SAND/GRAVEL 12" MIN.

PIPE LENGTHS SHOWN ARE APPROXIMATE. CONSTRUCTION IS RESPONSIBLE FOR SUPPLYING PROPER QUANTITIES OF MATERIALS.

MINIMUM SLOPE FOR 6" INCH SANITARY SEWER DUCTS: 2.0%

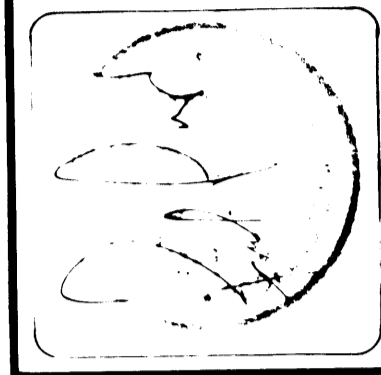
PIPE SLOPE LINE SEPARATION SHALL BE 12" FEET HORIZONTAL AND 18" INCHES VERTICAL DISTANCE OR SHALL BE ENLARGED.

PROPOSED VEGETATION WILL ESTABLISHED NATURAL VEGETATION

DETAIL

1. REVISED AS PER DEPARTMENT OF FISHERIES REVIEW  
2. REVISED AS PER CITY OF ARLINGTON REVIEW

DESIGNED BY: MOORE  
DRAWN BY: MOORE  
CHECKED BY: MOORE  
SCALE: HORIZONTAL 1/4" = 1'-0"  
SCALE: VERTICAL 1/4" = 1'-0"  
JOB NUMBER: 6592  
FIELD BOOK: 1000  
COUNTY: JEFFERSON



by Cascade Surveying & Engineering, Inc.  
P O BOX 388  
ARLINGTON, WA  
435-5551  
658-7572

for KENT PRAIRIE ESTATES  
GENERAL NOTES,  
SECTIONS & DETAILS