

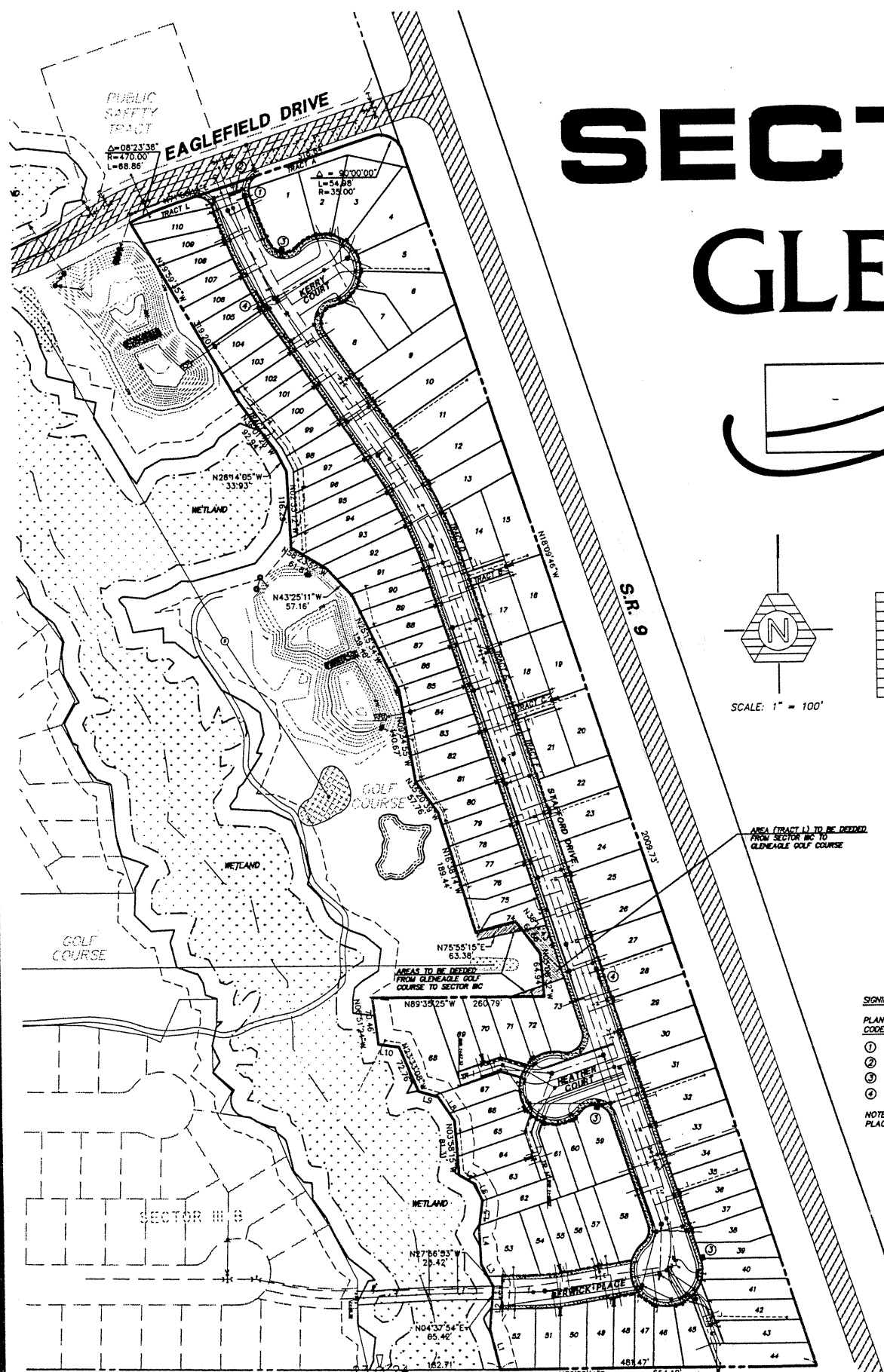
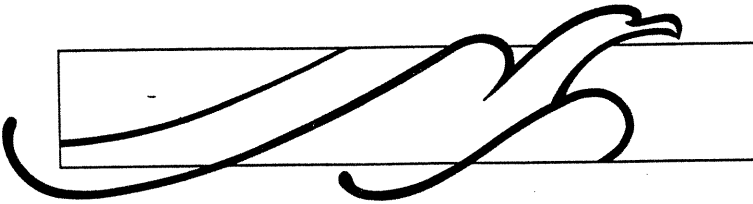
10418

SAFCO PRODUCTS • NEW HOPE, MINNESOTA
REORDER BY PART NUMBER 8551

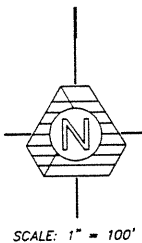
SAFCO PRODUCTS • NEW HOPE, MINNESOTA
REORDER BY PART NUMBER 8551

PORTION OF NE 1/4 SEC. 23 & NW 1/4 SEC. 24, TWP. 31 N., RGE. 5 E., W.M.

SECTOR III C GLENEAGLE



LINE	DIRECTION	DISTANCE
L1	N13°58'09" W	62.71
L2	N04°37'54" E	65.42
L3	N27°56'53" W	38.34
L4	N02°58'39" W	54.69
L5	N07°47'51" E	41.71
L6	N23°22'56" W	27.84
L7	N59°02'46" W	27.43
L8	N33°28'57" W	44.18
L9	N73°00'30" W	30.28
L10	N80°51'01" W	31.49



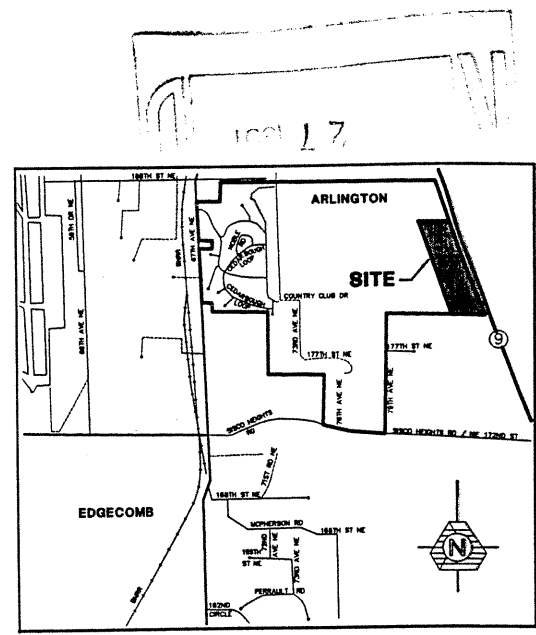
AREA (TRACT 1) TO BE DELETED FROM SECTOR III C TO GLENEAGLE GOLF COURSE

SIGNING SCHEDULE

PLAN CODE	MUTCD CODE	DESCRIPTION	QUANTITY
①	R1-1	STOP SIGN	1
②	---	STOP BAR	1
③	SNS	STREET NAME SIGN	3
④	R2-1(25)	SPEED LIMIT 25 MPH	2

NOTE: PLACE ALL ITEMS PER CITY OF ARLINGTON DIRECTIONS.

KEY MAP
SCALE: 1" = 100'



VICINITY MAP
NOT TO SCALE

OWNER/DEVELOPER
METCO HOMES, L.L.C.
18913 BOTHELL-EVERETT HIGHWAY
BOTHELL, WA 98012
CONTACT: MIKE MIETZNER
PHONE: (206) 481-0685

ENGINEER'S LEGAL DESCRIPTION
PARCEL H GLENEAGLE GOLF COURSE ACCORDING TO THE PLAT THEREOF RECORDED IN VOLUME 61 OF PLATS, PAGES 209 THROUGH 224, RECORDS OF SNOHOMISH COUNTY, WASHINGTON.

BENCHMARK AND DATUM
DATUM: N.G.V.D. 1929
ORIGINAL BENCHMARK: TOP OF CONCRETE MONUMENT IN CASE AT THE CORNER OF SECTIONS 22-23-26-27, TWP. 31 N., RGE. 5 E., W.M., SNOHOMISH COUNTY, WA, LOCATED AT THE INTERSECTION OF 67TH AVE NE AND 172ND ST NE. ELEVATION 135.54 FEET.

SHEET INDEX

NO.	DATE	REVISION	BY
1		COVER SHEET	
2-3		ROAD AND STORM DRAINAGE PLANS	
4-5		ROAD AND STORM DRAINAGE PROFILES	
6-7		SANITARY SEWER AND WATER PLANS	
8-9		SANITARY SEWER AND WATER PROFILES	
10-11		GRADING AND TEMPORARY EROSION CONTROL PLANS	
12-13		DETAILS AND NOTES	
14		TESC DETAILS AND NOTES	
15-16		CURB AND ALIGNMENT SHEETS	
17-18		COMPOSITE GRADING AND UTILITY PLANS	

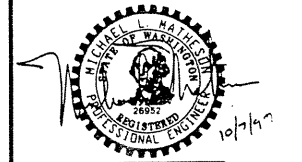
TRIAD ASSOCIATE
15 Oregon
Suite
Kirkland, WA 98034
206.821.8448
Tacoma, WA 98
206.474.2
Fax 206.474.2
Civil Engineer
Landscape Architecture
Project Manager
Site D.

ROAD, STORM DRAINAGE AND UTILITY PLANS

GLENEAGLE
SECTOR III C

NO.	DATE	REVISION	BY
1	4/2/97	REVISED FOR CLIENT	
2	4/23/97	REVISED S.S. AND WATER SERVICES	
3	10/7/97	AS-BUILT	

PROJECT MANAGER: JON BE NELSON, P.E.
DESIGNED: D. HANDBRICH/A. FRE.
CADD: J. FREDRICK/A. DOU.
CHECKED: MLM
DATE: 3/4/97
SCALE: HORIZ. 1" = 100'
VERT. N/A



RECORD DOCUMENTS
THIS SET OF RECORD DOCUMENTS, REQUIRED BY THE CITY OF ARLINGTON, REFLECTS CHANGES MADE DURING CONSTRUCTION TO STORM, SEWER AND WATER UTILITIES. THE HORIZONTAL POSITIONS OF STRUCTURES WHICH VARY MORE THAN FIVE FEET FROM THEIR DESIGN LOCATIONS HAVE BEEN REVISED ON THESE PLANS. STRUCTURE TOP AND INVERT ELEVATIONS WERE DERIVED BY FIELD SURVEY METHODS AND TIED TO THE PROJECT BENCHMARK. PIPE SLOPES WERE INTERPOLATED AND MAY NOT REFLECT THE ACTUAL SLOPES OF THE INSTALLED PIPES. BECAUSE THESE DOCUMENTS ARE BASED ON A COMBINATION OF FIELD SURVEY DATA AND UNVERIFIED INFORMATION PROVIDED BY THE CONTRACTOR, TRIAD ASSOCIATES DOES NOT WARRANT THEIR ACCURACY.

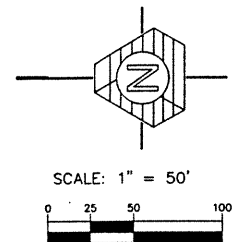
STAMP NOT VALID
UNLESS SIGNED AND DATED

JOB NUMBER: 97-007
SHEET NUMBER: 1 of 18

ACADD File: E:\PROJECTS\97007\DWG\FILES\97007CV1 Plotted at: Wed Oct 8 16:55:57 1997
odd Dberg

CAUTION:
LOCATION OF EXISTING UTILITIES
SHOWN ARE APPROXIMATE AND MAY
NOT BE ACCURATE OR ALL
INCLUSIVE. IT IS THE CONTRACTOR'S
RESPONSIBILITY TO FIELD VERIFY
LOCATION OF UTILITIES PRIOR TO
PROCEEDING WITH CONSTRUCTION.

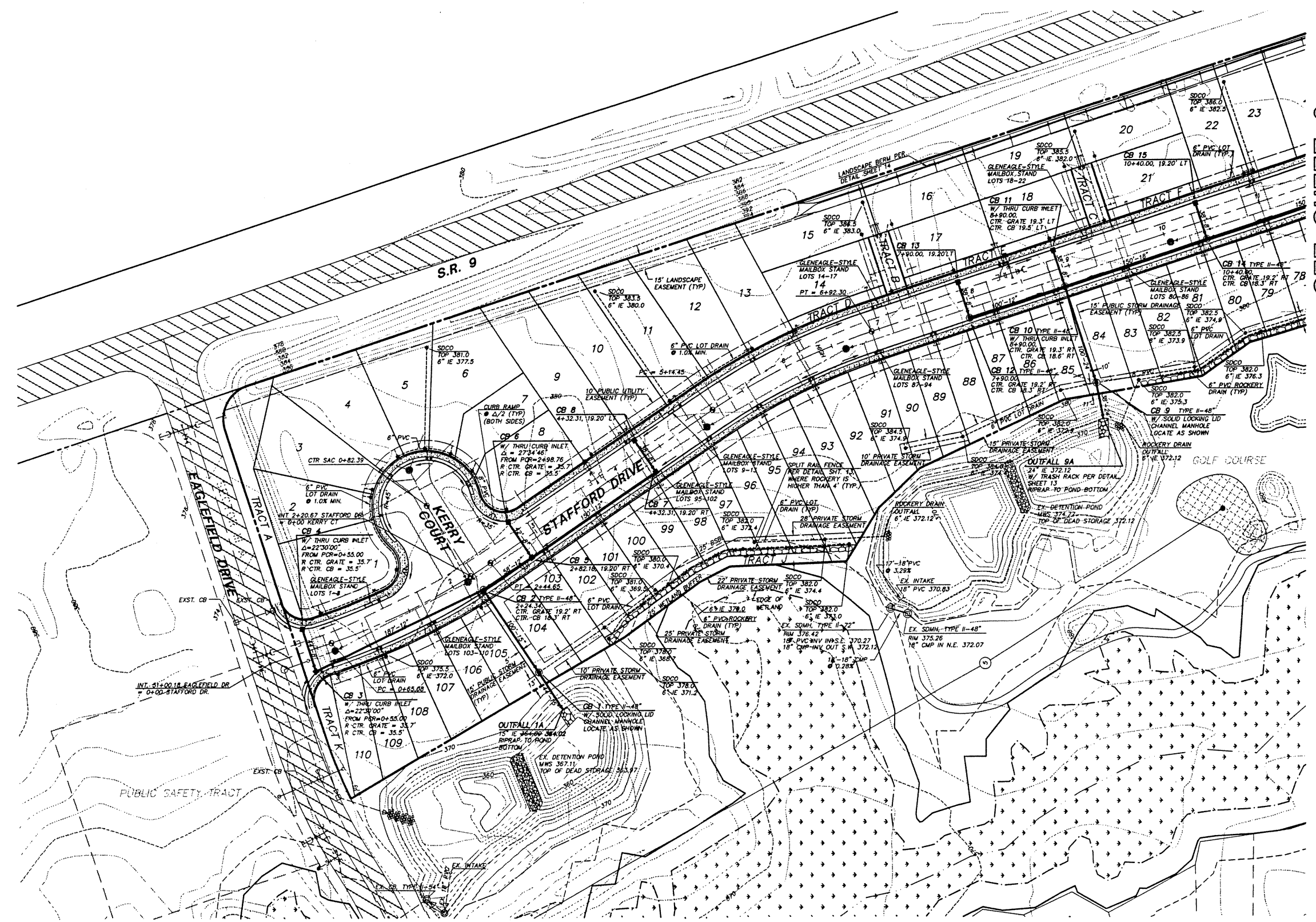
NOTE: ALL CATCH BASINS SHALL BE
TYPE I WITH STANDARD GRATE
UNLESS OTHERWISE SHOWN.



TRIAD ASSOCIATI
11814 115th Ave. NE
Kirkland, WA 98034
206.821.8448
Fax 206.821.5481

15 Oregon
Su
Tacoma, WA
206.47
206.47
206.47

Civil Eng
Land Use Planning
Landscape Architecture
Site



SEE SHEET 3

ROAD AND STORM DRAINAGE PLAN

GLENEAGLE
SECTOR III C

NO.	DATE	REVISION	
1	1/2/97	REVISED FOR CLIENT	
2	1/23/97	REVISED S.S. AND WATER SERVICES	
3	10/7/97	AS-BUILT	

PROJECT MANAGER: JON K. NELSON, P.E.
DESIGNED: D. HANCOCK/J. FR.
CADD: J. FREDRICKS, P.E.
CHECKED: MUM
DATE: 3/4/97
SCALE: HORIZ. 1" = 50'
VERT. 1" = 5'



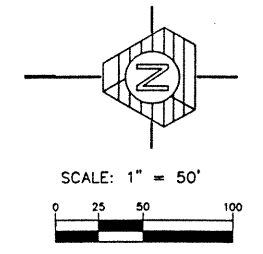
STAMP NOT VALID
UNLESS SIGNED AND DATED

JOB NUMBER: 97-007
SHEET NUMBER: 2 of 18

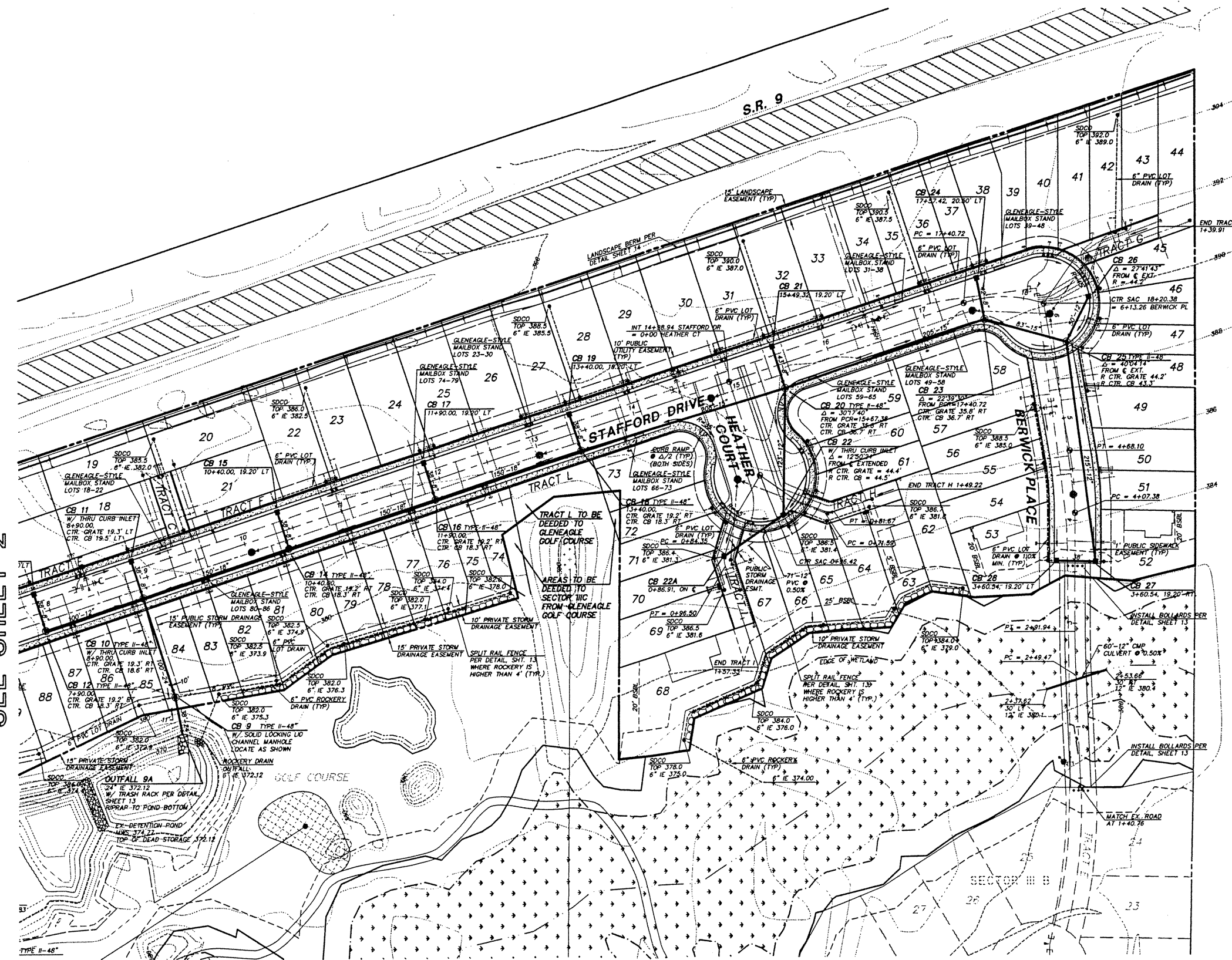
RECORD DOCUMENT
SEE SHEET 1 FOR STATEMENT

CAUTION:
LOCATION OF EXISTING UTILITIES
SHOWN ARE APPROXIMATE AND MAY
NOT BE ACCURATE OF ALL
INCLUSIVE. IT IS THE CONTRACTOR'S
RESPONSIBILITY TO FIELD VERIFY
LOCATION OF UTILITIES PRIOR TO
PROCEEDING WITH CONSTRUCTION.

NOTE: ALL CATCH BASINS SHALL BE
TYPE I WITH STANDARD GRATE
UNLESS OTHERWISE SHOWN.



SEE SHEET 2



TRIAD ASSOC
11814 115th Ave. NE
Kirkland, WA 98034
206.821.8448
Fax: 206.821.3481

15 C
Tacoma, WA
Civil
Project I

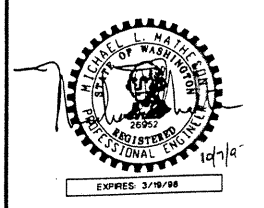
Land Surveying
Land Use Planning
Landscape Architecture

ROAD AND STORM DRAINAGE PLAN

GLENEAGLE
SECTOR III C

NO.	DATE	REVISION
1	4/0/97	REVISED PER CLIENT
2	4/23/97	REVISED S.S. AND WATER SERVICES
3	5/1/97	REVISED PER COMPUTED ROAD & UTILITIES
4	10/27/97	AS-BUILT

PROJECT MANAGER:	JOY W. NELSON
DESIGNED:	D. HANDBORN
CADD:	J. FREDRICKS
CHECKED:	ALM
DATE:	3/4/97
SCALE:	HORIZ. 1" = 100' VERT. 1" = 10'

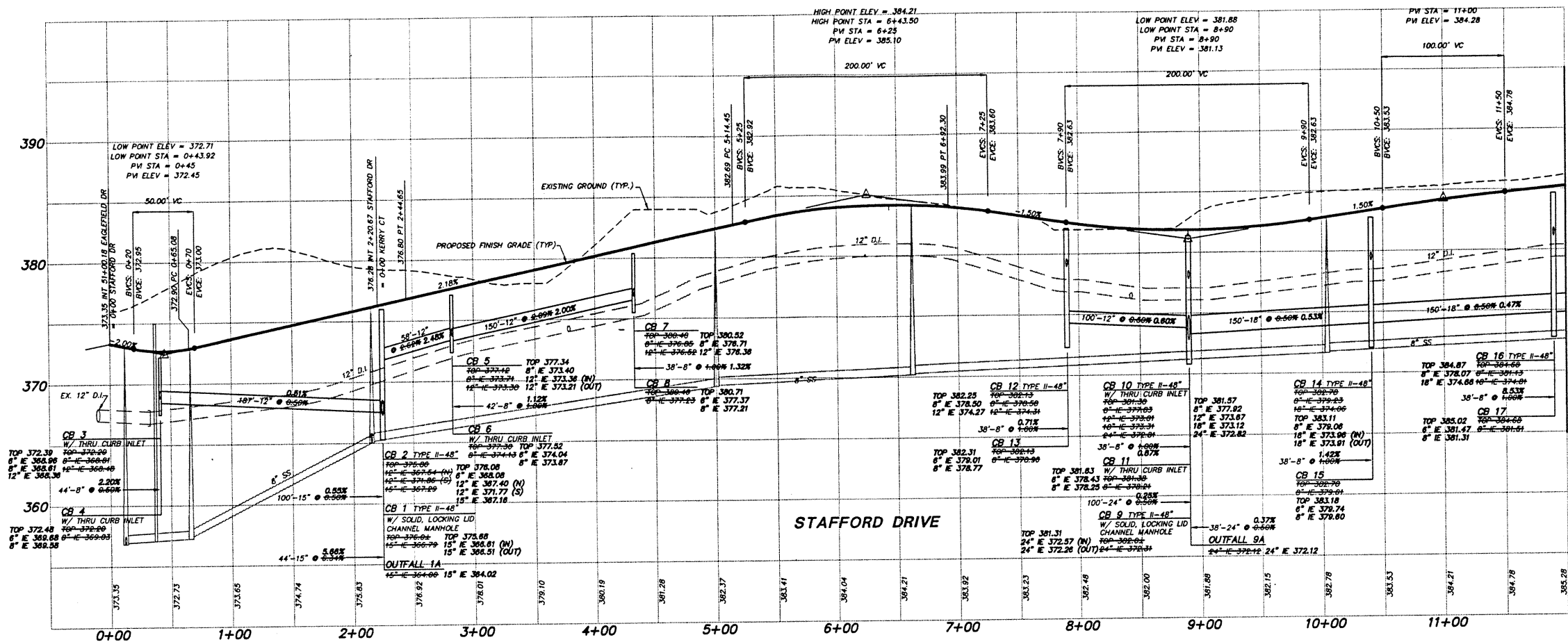


STAMP NOT VALID
UNLESS SIGNED AND DATED

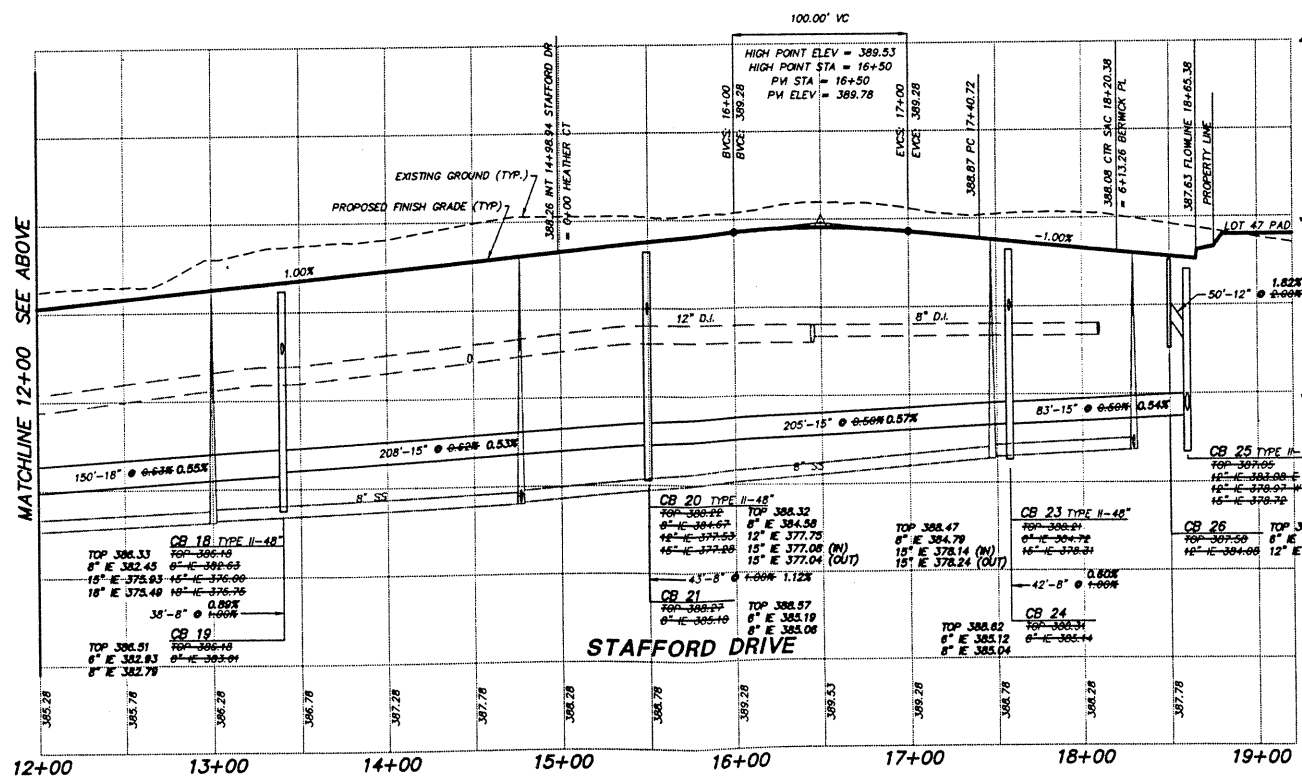
JOB NUMBER: 97-01

SHEET NUMBER: 3

RECORD DOCUMENT
SEE SHEET 1 FOR STATEMENT



MATCHLINE 12+00 SEE BELOW



SCALE: 1" = 50' HORIZ.
1" = 5' VERT.

TRIAD ASSOCIAT
11814 115th Ave. NE
Kirkland, WA 98034
206.821.8448
Fax 206.821.3481

15 Cre.
Tacoma, W
206.
Project No.
S

Land Surveying
Land Use Planning
Landscape Architecture

ROAD AND STORM DRAINAGE PROFILES

GLENEAGLE
SECTOR III C

NO.	DATE	REVISION
1	4/2/97	REVISED PER CLIENT
2	10/7/97	AS-BUILT

PROJECT MANAGER: JON W. NELSON
DESIGNED: JOHANN D. PRED
CADD: MARTIN KALIB
CHECKED: M.L.M.
DATE: 3/4/97
SCALE: HORIZ: 1" = 50'
VERT: 1" = 5'



STAMP NOT VALID
UNLESS SIGNED AND DATED

JOB NUMBER

97-00

SHEET NUMBER

4 of 18

RECORD DOCUMENT
SEE SHEET 1 FOR STATEMENT

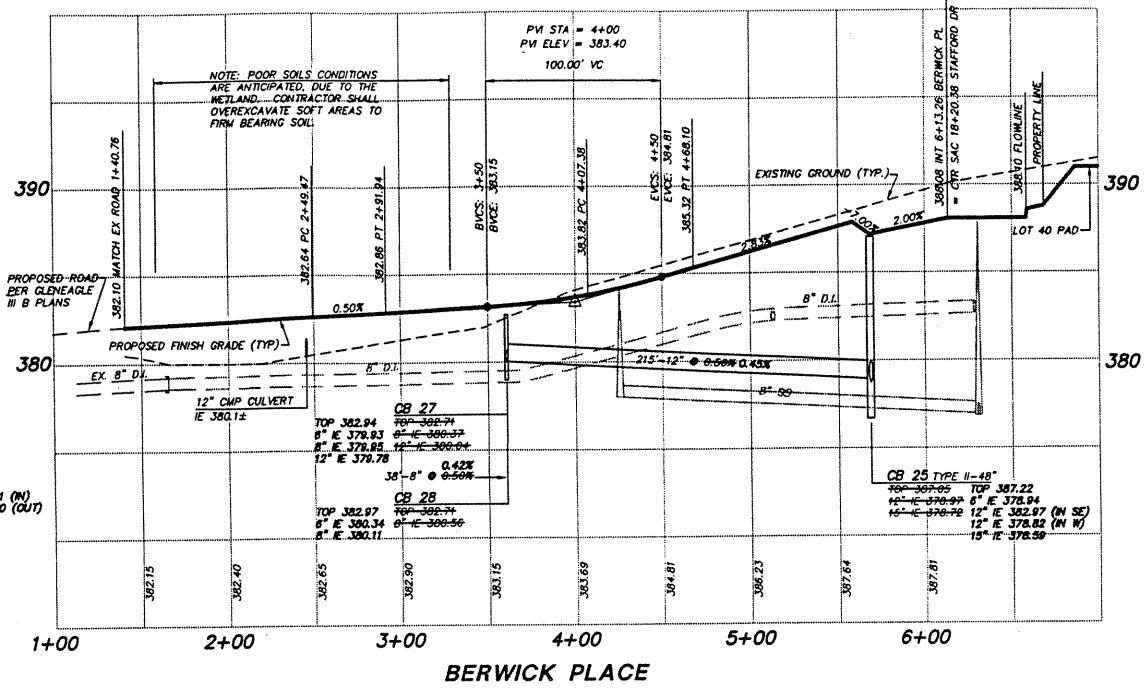
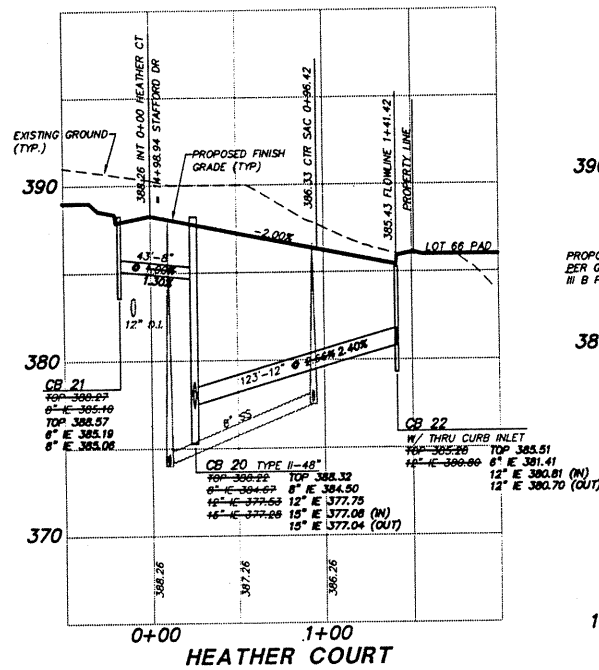
Plot File: E:\PROJECTS\9700\DRGFILES\7007P1 Plotted at: Wed Oct 8 17:07:15 1997
odd Dwg

DRAWING NUMBER
97007
5 of 18

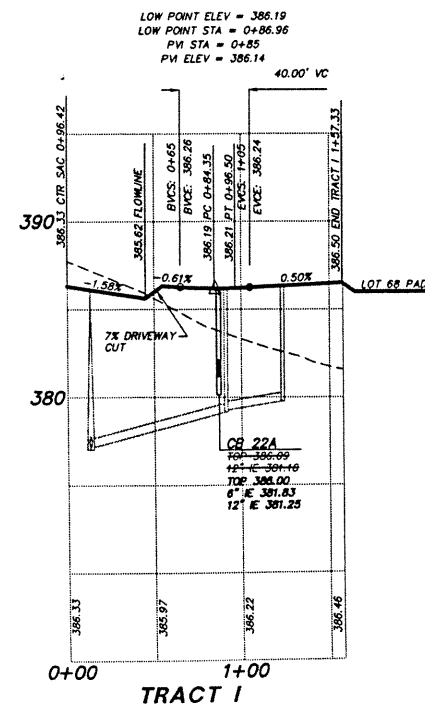
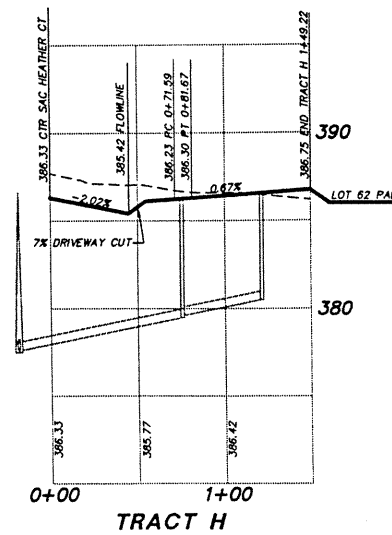
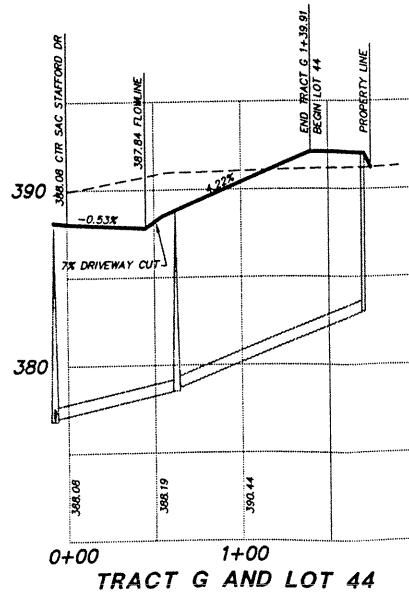
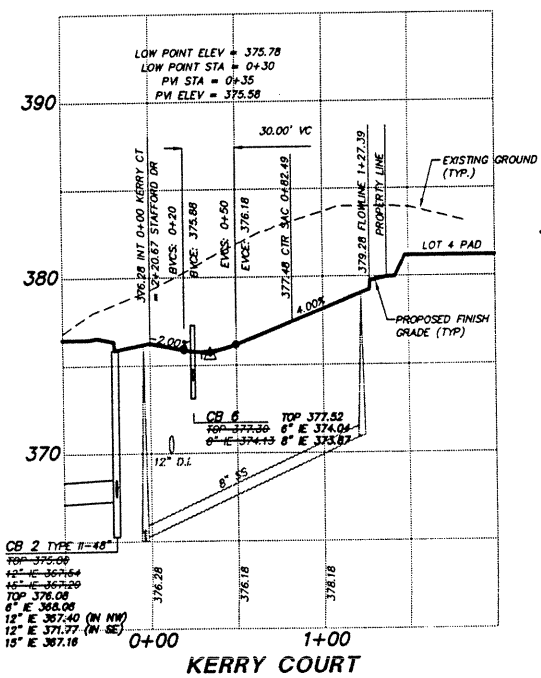
SAFCO PRODUCTS • NEW HOPE, MINNESOTA
 REORDER BY PART NUMBER 6551

DRAWING NUMBER

SAFCO PRODUCTS • NEW HOPE, MINNESOTA
 REORDER BY PART NUMBER 6551



SCALE: 1" = 50' HORIZ.
 1" = 5' VERT.



TRIAD ASSOC
 11814 115th Ave. NE
 Kirkland, WA 98034
 206.821.8448
 Fax: 206.821.3481

150
 Tacoma, WA
 206
 Civil E
 Project N

Land Surveying
 Land Use Planning
 Landscape Architecture

ROAD AND STORM DRAINAGE PROFILES

GLENEAGLE
 SECTOR III C

NO.	DATE	REVISION
1	3/1/97	REVISED PER COMPUTED ROAD E
2	10/7/97	AS-BUILT

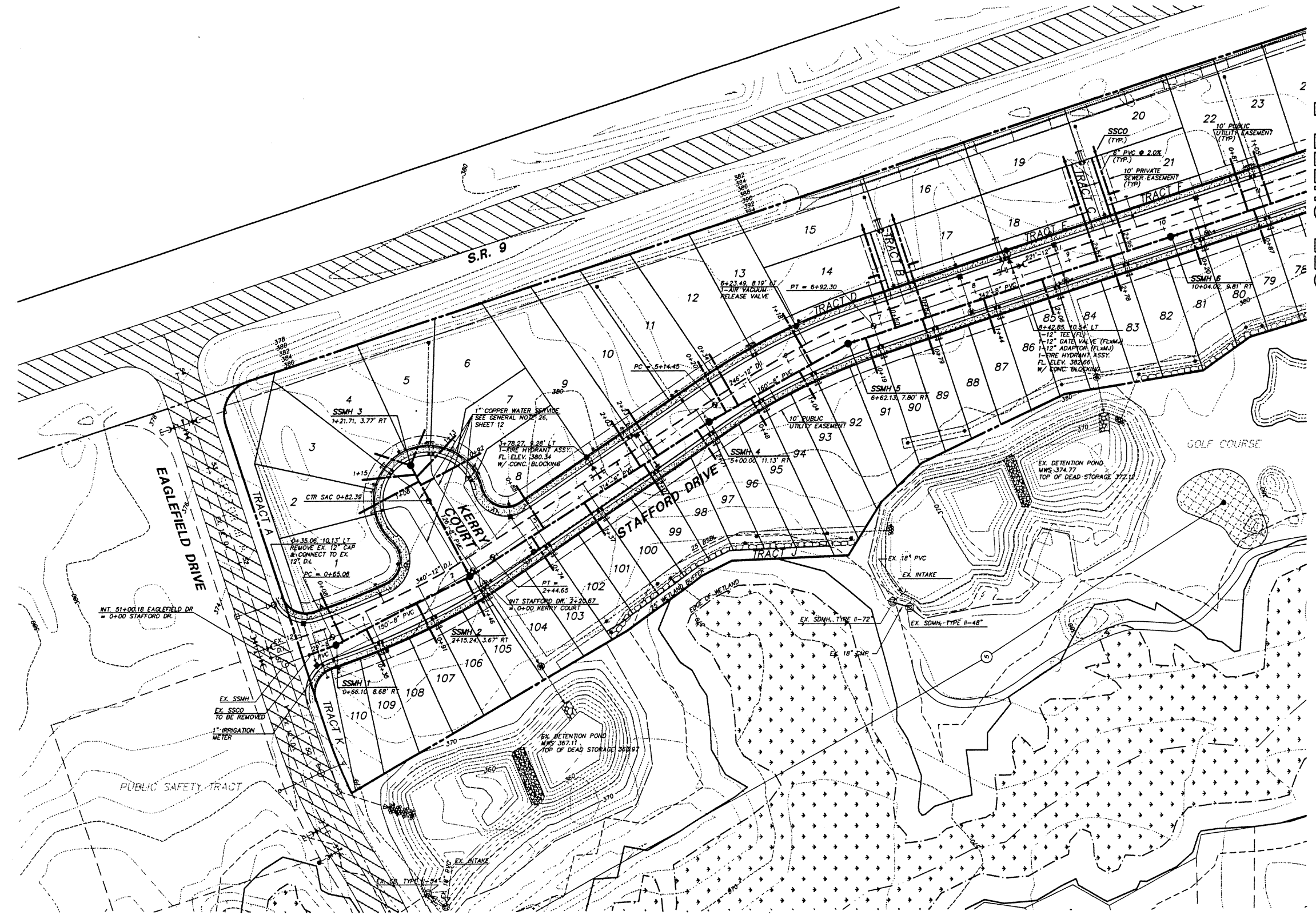
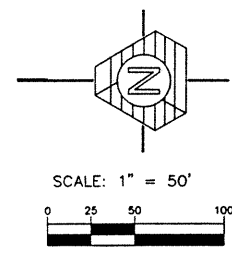
PROJECT MANAGER: JON W. NELSON
 DESIGNED: JOANNE D. FREDRICK
 CADD: MARTIN REALS
 CHECKED: M.L.M.
 DATE: 3/4/97
 SCALE: HORIZ. 1" = 50'
 VERT. 1" = 5'



STAMP NOT VALID
 UNLESS SIGNED AND DATED

JOB NUMBER

97-007



SEE SHEET 7

TRIAD ASSOCIAT
 15 Greg
 Kirkland, WA 98034
 206.821.8448
 Fax 206.821.3481

15 Greg
 Tacoma, WA
 206.47
 Fax 206.47

Land Surveying
 Land Use Planning
 Landscape Architecture

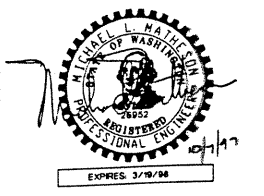
Civil Eng.
 Project Man.
 Sr.

SANITARY SEWER AND WATER PLAN

GLENEAGLE
SECTOR III C

NO.	DATE	REVISION
1	4/2/97	REVISED FOR CLIENT
2	4/23/97	REVISED S.S. AND WATER SERVICES
3	6/12/97	ADDED IRRIGATION METER
4	10/7/97	AS-BUILT

PROJECT MANAGER:	JON W. NELSON
DESIGNED:	JOANNE D. FREDRIK
CADD:	J. FREDRICK/BJR
CHECKED:	KALAM
DATE:	3/4/97
SCALE:	HORIZ: 1" = 5' VERT: 1" = 5'



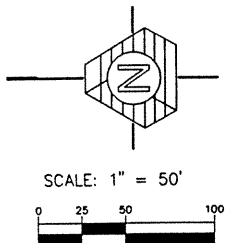
STAMP NOT VALID
UNLESS SIGNED AND DATED

JOB NUMBER **97-00**
SHEET NUMBER **6 of 18**

RECORD DOCUMENT
SEE SHEET 1 FOR STATEMENT

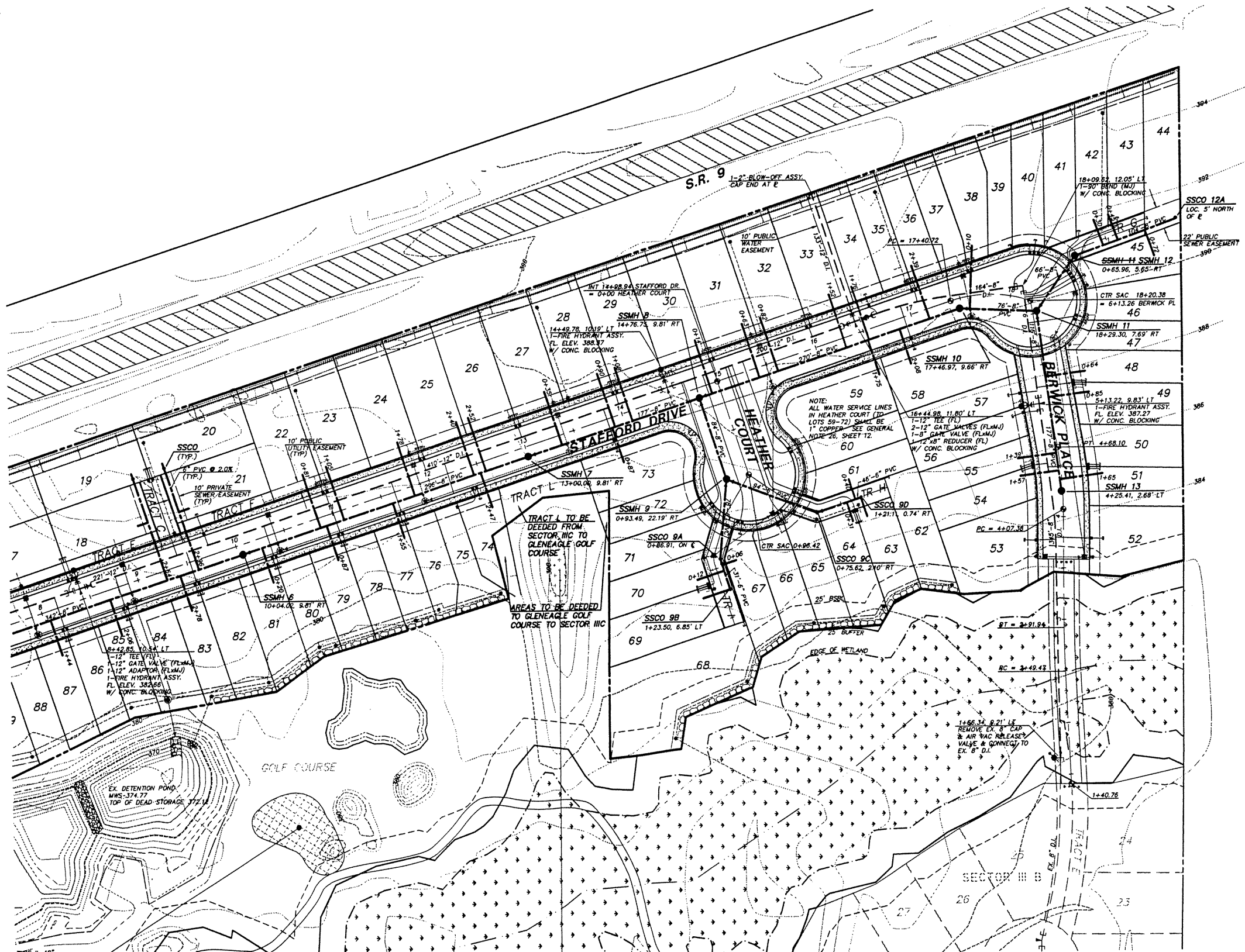
DRAWING NUMBER
97007
7 of 18
 SAFCO PRODUCTS • NEW HOPE, MINNESOTA
 REORDER BY PART NUMBER 6551

DRAWING NUMBER
 SAFCO PRODUCTS • NEW HOPE, MINNESOTA
 REORDER BY PART NUMBER 6551



TRIAD ASSOCIATES
 11814 115th Ave. NE
 Kirkland, WA 98034
 206.821.8468
 Fax 206.821.3481
 Land Surveying
 Land Use Planning
 Landscape Architecture

SEE SHEET 6

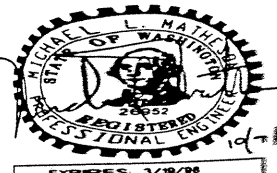


SANITARY SEWER AND WATER PLAN

GLENEAGLE
 SECTOR III C

NO.	DATE	REVISION
1	4/2/97	REVISED PER CLIENT
2	1/23/97	REVISED S.S. AND WATER SERVICES
3	3/1/97	REVISED PER COMPUTED ROAD C
4	10/7/97	AS-BUILT

PROJECT MANAGER: **JOHN E. NELSON**
 DESIGNED: **JOANNE D. FREDRICK**
 CADD: **J. FREDRICK**
 CHECKED: **MLM**
 DATE: **3/1/97**
 SCALE: HORIZ. 1" = 50'
 VERT. 1" = 10'



STAMP NOT VALID UNLESS SIGNED AND DATED

JOB NUMBER **97-01**

RECORD DOCUMENT

5197007.DWG FILES\7007551 Plotted at: Wed Oct 8 17:09:46 1997

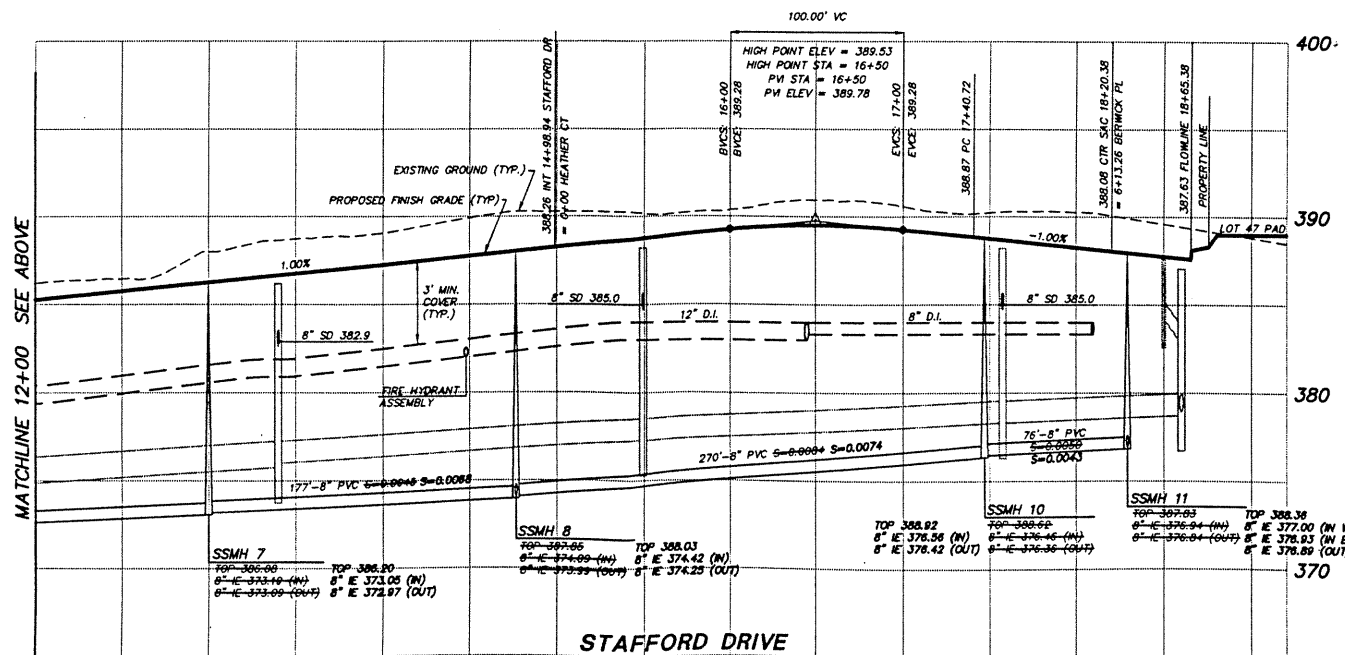
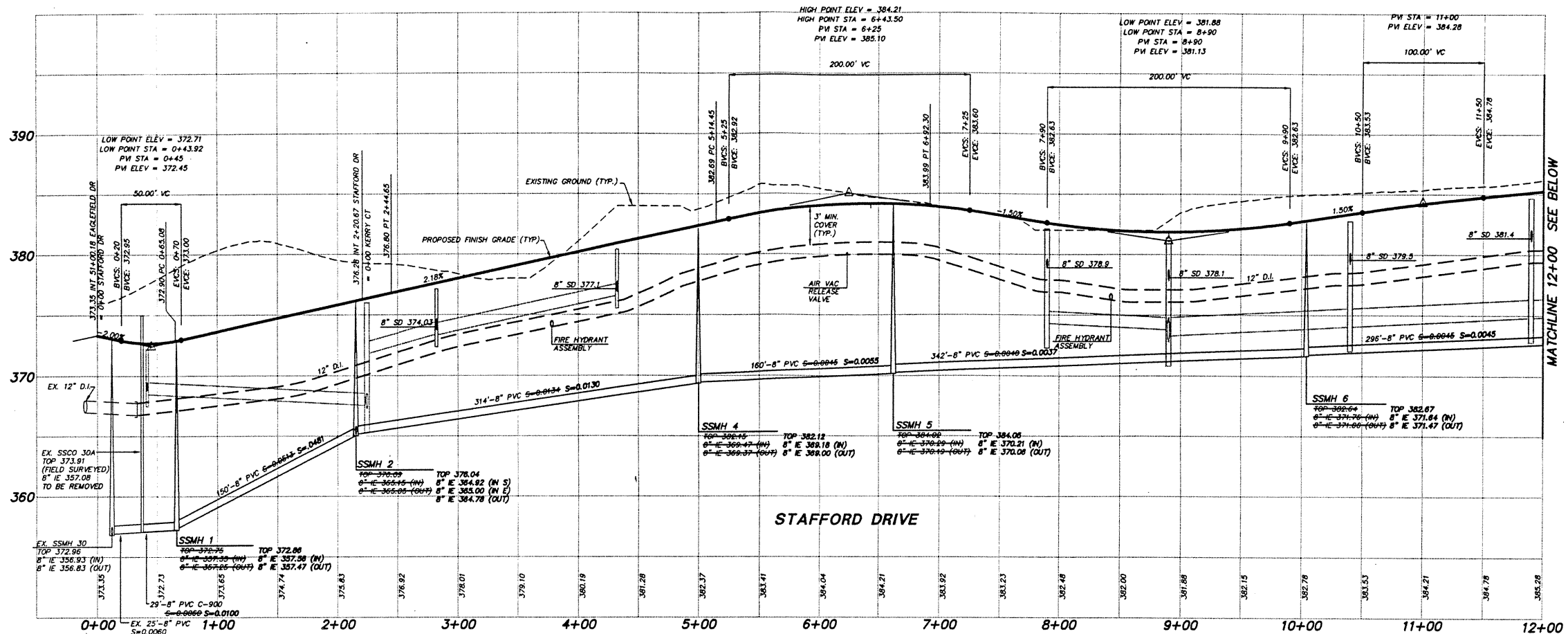
DRAWING NUMBER

97007
8 of 18

SAFCO PRODUCTS • NEW HOPE, MINNESOTA
REORDER BY PART NUMBER 8551

DRAWING NUMBER

SAFCO PRODUCTS • NEW HOPE, MINNESOTA
REORDER BY PART NUMBER 6551



SCALE: 1" = 50' HORIZ.
1" = 5' VERT.



TRIAD ASSOC
11814 115th Ave. NE
Kirkland, WA 98034
206.821.8448
Fax: 206.821.3461

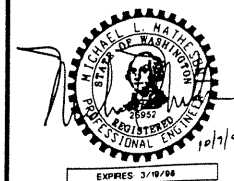
Land Surveying
Land Use Planning
Landscape Architecture

SANITARY SEWER AND WATER PROFILES

GLENEAGLE

NO.	DATE	REVISION
1	5/19/97	REVISED SANITARY SEWER PROFILE
2	10/27/97	AS-BUILT

PROJECT MANAGER: JON R. NELSON
 DESIGNED: JOANNE D. ...
 CAD: ROSS MARZ...
 CHECKED: M. L. ...
 DATE: 3/4/97
 SCALE: HORIZ. 1" = 50'
 VERT. 1" = 5'



STAMP NOT VALID
UNLESS SIGNED AND DATED

JOB NUMBER

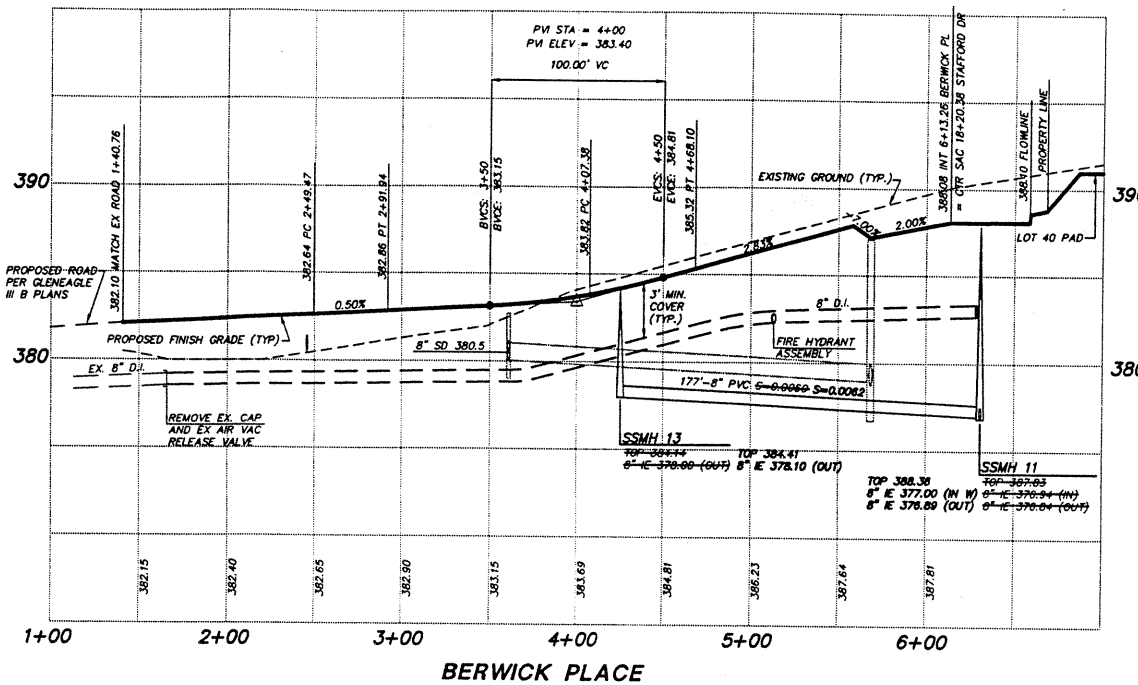
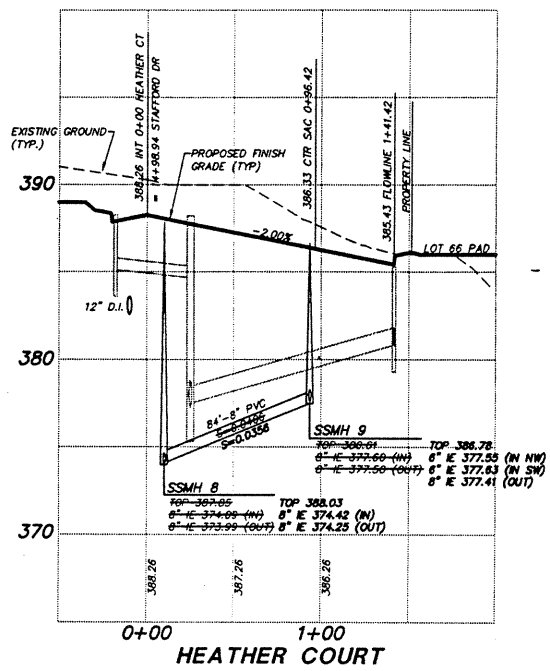
DRAWING NUMBER

97007
9 of 18

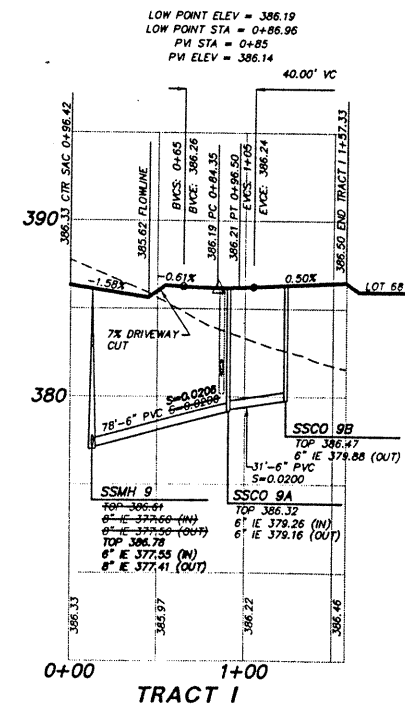
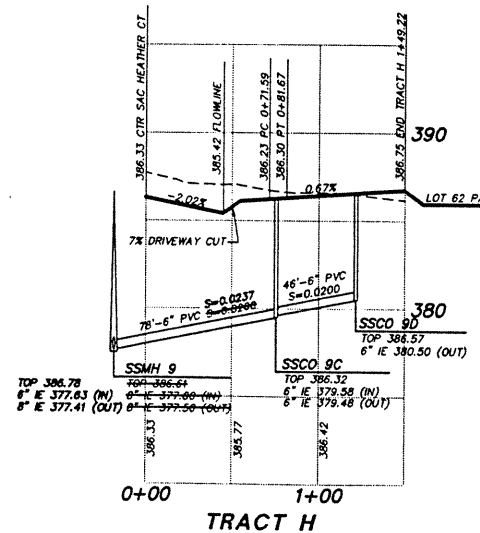
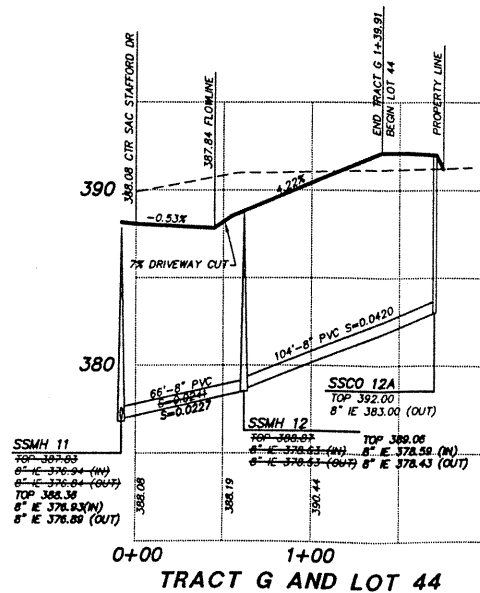
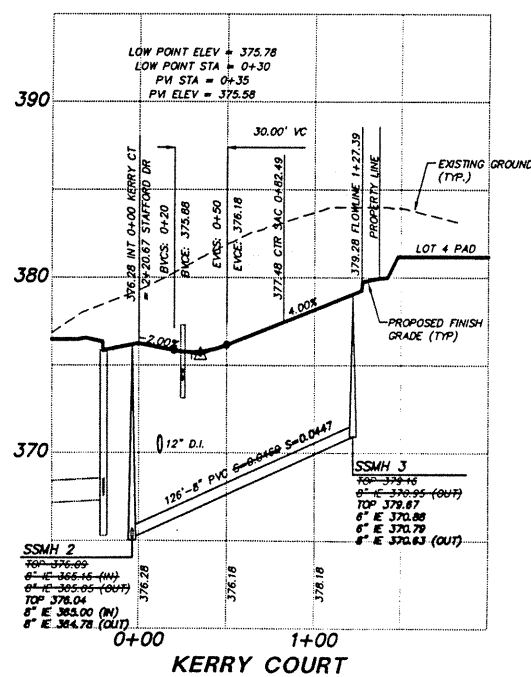
SAFCO PRODUCTS • NEW HOPE, MINNESOTA
REORDER BY PART NUMBER 8551

DRAWING NUMBER

SAFCO PRODUCTS • NEW HOPE, MINNESOTA
REORDER BY PART NUMBER 6551



SCALE: 1" = 50' HORIZ.
1" = 5' VERT.



TRIAD ASSOC
11814 115th Ave. NE
Kirkland, WA 98034
206.821.8448
Fax: 206.821.3481

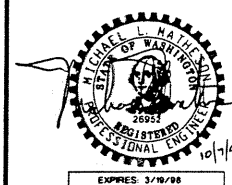
Land Surveying
Land Use Planning
Landscape Architecture

SANITARY SEWER AND WATER PROFILES

GLENEAGLE

NO.	DATE	REVISION
1	3/1/97	REVISED PER COMPUTED ROAD C
2	3/18/97	REVISED SANITARY SEWER PROFI
3	10/7/97	AS-BUILT

PROJECT MANAGER: JOE W. NEL
 DESIGNED: JOHANN D. I
 CADD: ROSS MARZ
 CHECKED: M.L.M.
 DATE: 3/4/97
 SCALE: HORIZ. 1" = 50'
 VERT. 1" = 5'



STAMP NOT VALID
UNLESS SIGNED AND DATED
JOB NUMBER

DRAWING NUMBER
97007
11 of 18

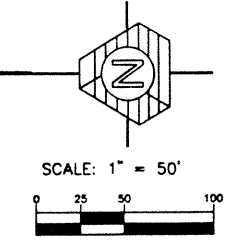
SAFCO PRODUCTS • NEW HOPE, MINNESOTA
 REORDER BY PART NUMBER 6551

DRAWING NUMBER

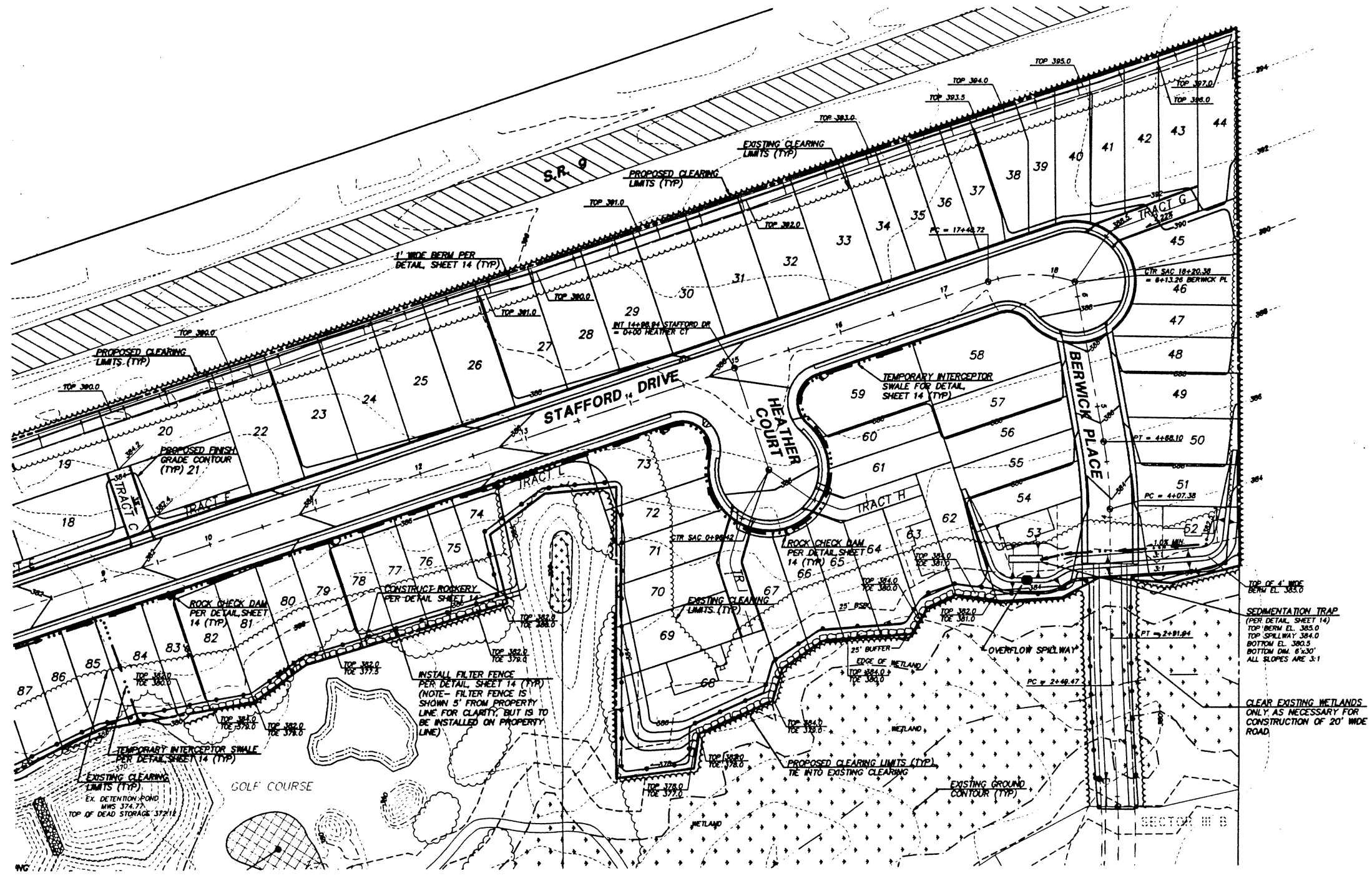
SAFCO PRODUCTS • NEW HOPE, MINNESOTA
 REORDER BY PART NUMBER 6551

NOTE:
 SEE EROSION CONTROL DETAILS,
 SHEET 14, AND NOTES, SHEET 12.

CAUTION:
 LOCATION OF EXISTING UTILITIES
 SHOWN ARE APPROXIMATE AND MAY
 NOT BE ACCURATE OR ALL
 INCLUSIVE. IT IS THE CONTRACTOR'S
 RESPONSIBILITY TO FIELD VERIFY
 LOCATION OF UTILITIES PRIOR TO
 PROCEEDING WITH CONSTRUCTION.



SEE SHEET 10



TRIAD ASSOCIATES
 11814 115th Ave. NE
 Kirkland, WA 98034
 206.821.8446
 Fax: 206.821.3481

15 Oregon Ave.
 Suite 306
 Tacoma, WA 98408
 206.474.2480
 Fax: 206.474.2480

Land Surveying
 Land Use Planning
 Landscape Architecture

Civil Engineering
 Project Management
 Site Design

GRADING AND TEMPORARY EROSION CONTROL PLAN

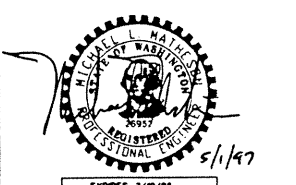
GLENEAGLE
 SECTOR III C

WASHINGTON

CITY OF ARLINGTON

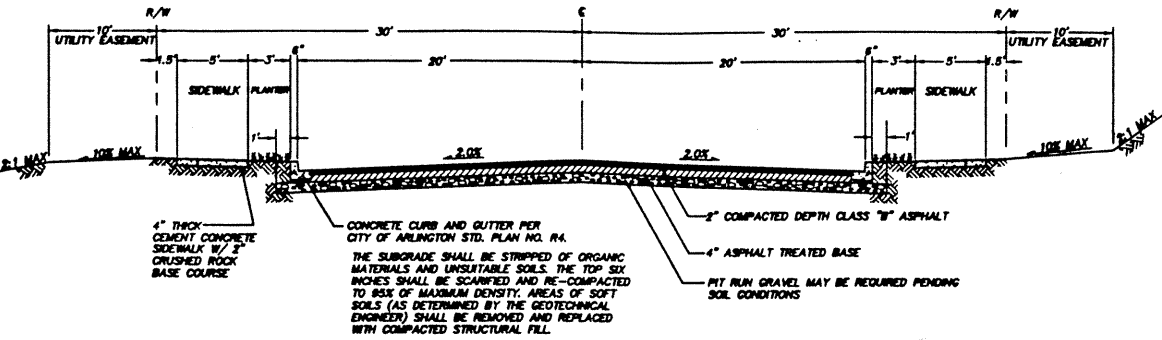
NO.	DATE	REVISION	BY	CHK
1	6/1/97	REVISED PER COMPUTER ROAD E	JM	JM

PROJECT MANAGER: **JOHN B. NELSON, P.E.**
 DESIGNED: **D. HANCOCK/J. FREDRICK**
 CADD: **AMOR DOGLAS**
 CHECKED: **ALM**
 DATE: **3/4/97**
 SCALE: **HORIZ. 1" = 50'**
VERT. 1" = 5'

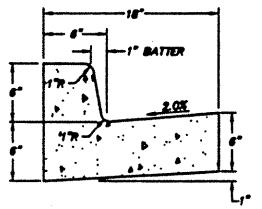


STAMP NOT VALID
 UNLESS SIGNED AND DATED

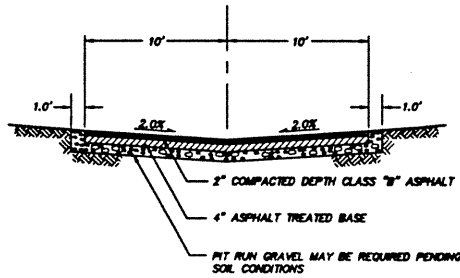
JOB NUMBER



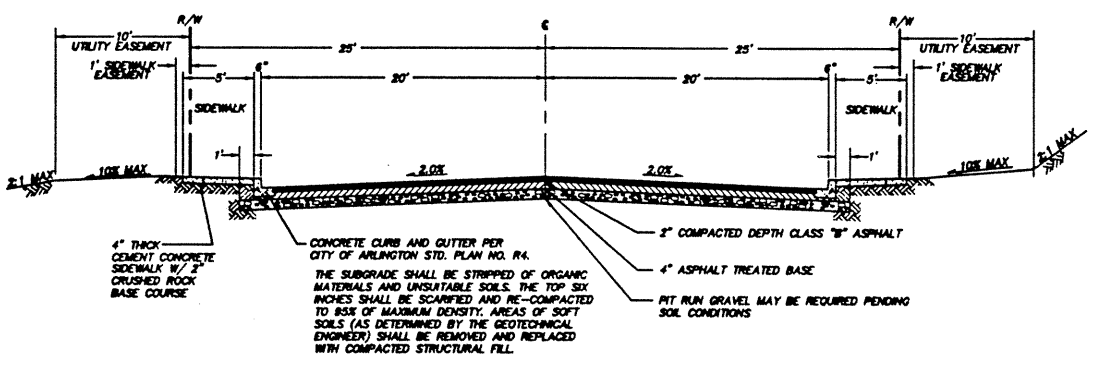
TYPICAL ROAD SECTION
 NOT TO SCALE



CEMENT CONCRETE CURB DETAIL
 NOT TO SCALE



TRACT ROAD SECTION
 NOT TO SCALE



BERWICK PLACE SECTION
 NOT TO SCALE

NOTES:
 1. POOR SOILS CONDITIONS ARE ANTICIPATED DUE TO THE WETLAND. CONTRACTOR SHALL OVEREXCAVATE SOFT AREAS TO FIRM BEARING SOIL.
 2. GEOTECHNICAL ENGINEER SHALL REVIEW SUBGRADE MATERIAL PRIOR TO PLACEMENT OF FILL.

CONSTRUCTION SEQUENCE

- (ALL WORK SHALL OCCUR IN THE FOLLOWING SEQUENCE)
1. THE CONTRACTOR SHALL ARRANGE AND ATTEND A PRECONSTRUCTION MEETING WITH THE CITY OF ARLINGTON ENGINEER AND INSPECTOR.
 2. CLEARLY FLAG ALL CLEARING LIMITS, INCLUDING STORM DRAINAGE, WATER AND SEWER EASEMENT AREAS.
 3. INSTALL EROSION CONTROL FACILITIES, AS SHOWN ON THE PLANS. ADDITIONAL FACILITIES MAY BE REQUIRED DUE TO WEATHER CONDITIONS AND ADDITIONAL CLEARING REQUIREMENTS. VERIFY WITH PROJECT ENGINEER.
 4. CLEAR, GRUB AND GRADE THE SITE TO SUBGRADE, AS SPECIFIED IN THESE PLANS. COMPACTION AND SOIL STABILITY SHALL BE APPROVED BY THE GEOTECHNICAL ENGINEER. ALL DISTURBED SURFACES SHALL BE HYDROSEEDED PER THE SPECIFICATIONS BELOW.
 5. INSTALL ALL UTILITIES, INCLUDING STORM DRAINAGE, WATER AND SANITARY SEWER. ADDITIONAL UTILITIES, SUCH AS POWER, GAS AND CABLE T.V. INSTALLATION WILL NEED TO BE COORDINATED BY CONTRACTOR.
 6. WASH DOWN AREAS SHALL BE PROVIDED FOR CONSTRUCTION VEHICLES LEAVING THE SITE. ALL EXIT ROADS SHALL BE KEPT CLEAN OF CONSTRUCTION DEBRIS AT ALL TIMES.

TEMPORARY EROSION/SEDIMENTATION CONTROL NOTES

1. THE CONTRACTOR SHALL PROVIDE AND MAINTAIN EROSION/SEDIMENTATION CONTROL FACILITIES TO INSURE SEDIMENT LOADED WATER DOES NOT ENTER THE NATURAL DRAINAGE SYSTEM. THESE FACILITIES MUST BE IN OPERATION PRIOR TO CLEARING AND BUILDING CONSTRUCTION, AND SATISFACTORILY MAINTAINED UNTIL ALL CONSTRUCTION AND LANDSCAPING ARE COMPLETED AND THE POTENTIAL FOR ON-SITE EROSION HAS PASSED.
2. MAINTENANCE OF STRAW BALES
 STRAW BALE BARRIERS SHALL BE INSPECTED IMMEDIATELY AFTER EACH RAINFALL AND AT LEAST DAILY DURING PROLONGED RAINFALL. CLOSE ATTENTION SHALL BE PAID TO THE REPAIR OF DAMAGED BALES, END RUNS AND UNDERCUTTING BENEATH BALES. NECESSARY REPAIRS TO BARRIERS OR REPLACEMENT OF BALES SHALL BE ACCOMPLISHED PROMPTLY. SEDIMENT DEPOSITS SHOULD BE REMOVED AFTER EACH RAINFALL. THEY MUST BE REMOVED WHEN THE LEVEL OF DEPOSITION REACHES APPROXIMATELY ONE HALF THE HEIGHT OF THE BARRIER. ANY SEDIMENT DEPOSITS REMAINING IN PLACE AFTER THE STRAW BALE BARRIER IS NO LONGER REQUIRED SHALL BE DRESSED TO CONFORM TO THE EXISTING GRADE, PREPARED AND SEED.
3. SEDIMENT TRAP MAINTENANCE
 THE EMBANKMENT OF THE BASIN SHALL BE CHECKED REGULARLY TO INSURE THAT IT IS STRUCTURALLY SOUND AND HAS NOT BEEN DAMAGED BY EROSION OR CONSTRUCTION EQUIPMENT. THE EMERGENCY SPILLWAY SHOULD BE CHECKED REGULARLY TO INSURE THAT ITS LINING IS WELL ESTABLISHED AND EROSION-RESISTANT. THE SILTATION BASIN SHALL BE CHECKED AFTER EACH RUNOFF-PRODUCING RAINFALL. SEDIMENT SHALL BE REMOVED AND PROPERLY DISPOSED OF, AS REQUIRED.
4. TEMPORARY GRAVEL CONSTRUCTION ENTRANCE
 AGGREGATE: 4" TO 8" QUARRY SHALLS.
5. ENTRANCE DIMENSIONS: THE AGGREGATE LAYER MUST BE AT LEAST ONE FOOT THICK. IT MUST EXTEND THE FULL WIDTH OF THE VEHICULAR INGRESS AND EGRESS AREA. THE LENGTH OF THE ENTRANCE MUST BE AT LEAST 50 FEET.
6. INSTALLATION: THE AREA OF THE ENTRANCE SHOULD BE CLEARED OF ALL VEGETATION AND ROOTS. THE QUARRY SHALLS SHALL BE PLACED TO THE SPECIFIED DIMENSIONS. ANY DRAINAGE FACILITIES REQUIRED BECAUSE OF WASHING SHOULD BE CONSTRUCTED ACCORDING TO SPECIFICATIONS IN THE PLAN. IF WASH ROCKS ARE USED, THEY SHOULD BE INSTALLED ACCORDING TO MANUFACTURER'S SPECIFICATIONS.
7. MAINTENANCE: THE ENTRANCE SHALL BE MAINTAINED IN A CONDITION WHICH WILL PREVENT TRACKING OR FLOW OF MUD ONTO PUBLIC RIGHT-OF-WAY. THIS MAY REQUIRE PERIODIC TOP DRESSING WITH 2" STONE AS CONDITIONS DEMAND. ALL MATERIALS DROPPED, WASHED OR TRACKED FROM VEHICLES ONTO THE ROADWAY OR INTO STORM DRAINS MUST BE REMOVED IMMEDIATELY.

LEGEND

- PROPOSED STORM DRAINAGE, SANITARY SEWER, WATER, AND T.E.S.C.
- STORM DRAIN PIPE
 - ROOF AND FOOTING DRAIN
 - BOUNDARY
 - LOT LINE
 - RIGHT-OF-WAY
 - GUTTER, FLOW, & CURB LINE
 - CENTER LINE
 - EASEMENT
 - BUILDING SETBACK LINE (BSBL)
 - SWALE OR DITCH
 - FENCE
 - 10' CONTOURS
 - 2' CONTOURS
 - TOP OF 40% SLOPE
 - EDGE OF WETLAND
 - DAYLIGHT LINE
 - NATIVE GROWTH PROTECTION EASEMENT (NGPE)
 - RETAINING WALL
 - ROCKERY
 - GUARDRAIL
 - BARRICADE
 - SEWER MAIN
 - SEWER FORCE MAIN
 - SEWER SERVICE
 - WATER MAIN
 - PROPOSED LIMITS OF CLEARING (TO OUTSIDE OF ARC)
 - EXISTING LIMITS OF CLEARING (TO OUTSIDE OF ARC)
 - FILTER FENCE
 - TEMP. INTERCEPTOR SWALE
 - ROCK CHECK DAM
 - TEMPORARY CULVERT
 - FINISH GRADE CONTOUR
 - DAYLIGHT LINE
 - CATCH BASIN, TYPE I
 - CATCH BASIN, TYPE II
 - CLEANOUT
 - YARD DRAIN
 - OVERFLOW STRUCTURE
 - CURB RAMP
 - RIPRAP
 - MAILBOX
 - SIGN
 - CUT SLOPES
 - FILL SLOPES
 - SEWER MANHOLE
 - SINGLE WATER METER W/ 3/4" SERVICE
 - DOUBLE WATER METER W/ 1" SERVICE
 - AIR/VAC RELEASE VALVE
 - BLOW OFF
 - GATE VALVE
 - TEE
 - BEND
 - REDUCER
 - CONCRETE BLOCKING
 - TEMPORARY STAND PIPE
 - STRAW BALES
 - EXISTING PAVEMENT
 - SIDEWALK
 - GRAVEL
 - CONCRETE
 - WETLAND
 - ≥40% SLOPE

GENERAL NOTES

1. ALL WORK AND MATERIALS SHALL BE IN ACCORDANCE WITH CITY OF ARLINGTON DESIGN AND CONSTRUCTION STANDARDS AND SPECIFICATIONS, WASHINGTON STATE CHAPTER OF AMERICAN PUBLIC WORKS ASSOCIATION (A.P.W.A.) STANDARD SPECIFICATIONS FOR MUNICIPAL PUBLIC WORKS CONSTRUCTION, LATEST EDITION; WASHINGTON STATE DEPARTMENT OF TRANSPORTATION STANDARD SPECIFICATIONS AND PLANS FOR ROAD, BRIDGE AND MUNICIPAL CONSTRUCTION, LATEST EDITION.
2. ALL WORK PERFORMED IN THE CONSTRUCTION OR IMPROVEMENT OF CITY STREETS AND ALL APPURTENANCES, WHETHER BY OR FOR A PRIVATE DEVELOPER, SHALL BE DONE TO THE SATISFACTION OF THE CITY ENGINEER AND IN ACCORDANCE WITH THE PLANS APPROVED BY THE CITY FOR THE WORK. IT IS EMPHASIZED THAT NO PERMITS SHALL BE ISSUED TO START WORK UNTIL PLANS FOR IT ARE APPROVED. ANY REVISIONS TO THE PLANS SHALL BE APPROVED BY THE CITY ENGINEER BEFORE BEING IMPLEMENTED. A SET OF "AS-BUILT" DRAWINGS (MPLANS) WILL BE REQUIRED AT THE COMPLETION OF THE PROJECT AND PRIOR TO FINAL ACCEPTANCE OF THE WORK. SEE INDIVIDUAL UTILITY SECTIONS FOR MORE SPECIFIC "AS-BUILT" REQUIREMENTS. "AS-BUILT" DRAWINGS WILL BE PREPARED BY THE ENGINEER. "AS-BUILT" INFORMATION SHALL BE PROVIDED BY THE CONTRACTOR TO THE ENGINEER.
3. ALL ROADWAY CONSTRUCTION INCLUDING, BUT NOT LIMITED TO, STORM DRAIN, WATER AND SANITARY SEWERS WILL BE DONE UNDER THE INSPECTION OF THE CITY ENGINEER AND/OR HIS DESIGNATED INSPECTORS. THE CONTRACTOR OR DEVELOPER IS RESPONSIBLE FOR ARRANGING INSPECTIONS BY THE CITY INSPECTOR FOR ALL PORTIONS OF THE WORK DURING THE CONSTRUCTION.
4. PRIOR TO ANY SITE WORK PERTAINING TO DRAINAGE, THE CONTRACTOR SHALL CONTACT THE CITY ENGINEER TO SCHEDULE A PRECONSTRUCTION CONFERENCE. ENGINEERING AS-BUILTS SHALL BE REQUIRED PRIOR TO ACCEPTANCE OF PUBLIC IMPROVEMENTS.
5. THE EROSION/SEDIMENTATION CONTROL FACILITIES SHALL BE CONSTRUCTED PRIOR TO ANY GRADING OR EXTENSIVE LAND CLEARING, IN ACCORDANCE WITH THE APPROVED GRADING AND TEMPORARY EROSION/SEDIMENTATION CONTROL PLAN. THESE FACILITIES MUST BE SATISFACTORILY MAINTAINED UNTIL CONSTRUCTION AND LANDSCAPING IS COMPLETED AND THE POTENTIAL FOR ON-SITE EROSION HAS PASSED.
6. UNLESS OTHERWISE NOTED, ALL STORM SEWER PIPE SHALL BE PVC, ASTM D3034, SDR 35, WITH APPROVED RUBBER GASKET JOINTS. AS AN ALTERNATIVE, STORM SEWER PIPE 12" THROUGH 18" DIAMETER MAY BE NON-REINFORCED CONCRETE PIPE (CP) CONFORMING TO ASTM C-14. ALL CONCRETE PIPE (CP) 24" AND LARGER SHALL BE REINFORCED CONCRETE CONFORMING TO ASTM C-76 CLASS E. WHERE SHOWN ON THE PLANS, CMP PIPE SHALL BE GALVANIZED STEEL, CONFORMING TO AASHTO M-36, TYPE 1 AND TYPE 2. PIPE SHALL HAVE AN ASPHALT TREATMENT COATING OR BETTER. ALL CMP PIPE SHALL HAVE NEOPRENE GASKETS.
7. ALL PIPE SHALL BE PLACED ON STABLE EARTH. IF, IN THE OPINION OF THE ENGINEER, THE EXISTING FOUNDATION IS UNSATISFACTORY, THEN IT SHALL BE EXCAVATED BELOW GRADE AND BACKFILLED IN ACCORDANCE WITH STANDARD SPECIFICATIONS. NEVER INSTALL PIPE ON SOIL, FROZEN EARTH OR LARGE BOULDERS OR ROCK.
8. THE BACKFILL SHALL BE PLACED EQUALLY ON BOTH SIDES OF THE PIPE. IN LAYERS WITH A LOOSE AVERAGE DEPTH OF 8", MAXIMUM DEPTH OF 8", THOROUGHLY TAMPING EACH LAYER. THESE COMPACTED LAYERS MUST EXTEND TO THE SIDE OF THE TRENCH MATERIALS TO COMPLETE THE FULL OVER PIPE SHALL BE AS SHOWN ON DETAIL, SHEET 3. (REFER TO WSDOT STD. SPEC. 7-04.03(3) AND STD. SPEC. 2-03.14(C), METHOD B AND C).
9. ALL CATCH BASINS SHALL BE TYPE 1 UNLESS OTHERWISE NOTED.
10. THE CONTRACTOR SHALL BE RESPONSIBLE FOR ADJUSTING ALL MANHOLE INLET AND CATCH BASIN FRAMES AND GRATES AND VALVE BOXES JUST PRIOR TO POURING OF CURBS AND PAVING.
11. ALL CATCH BASINS WITH A DEPTH OF 5.0 FEET TO THE FLOW LINE SHALL BE TYPE 2.
12. ALL CATCH BASINS OUTSIDE OF THE PUBLIC RIGHT-OF-WAY SHALL HAVE LOCKING LIDS.
13. ALL STRUCTURAL FILLS SHALL BE COMPACTED TO A MINIMUM OF 95% OF MAXIMUM DENSITY BY MODIFIED PROCTOR TEST.
14. STANDARD LADDER STEPS SHALL BE PROVIDED IN ALL CATCH BASINS/MANHOLES EXCEEDING FIVE (5) FEET IN DEPTH.
15. CATCH BASIN FRAMES AND GRATES SHALL BE IN ACCORDANCE WITH A.P.W.A. STANDARD SPECIFICATIONS.
16. BACKFILL TRENCH FOR NEW UTILITIES SHALL BE COMPACTED TO 95% RELATIVE DENSITY UNDER ROADWAYS AND 90% RELATIVE DENSITY OFF ROADWAYS.
17. STORM WATER CONVEYANCE FACILITIES, SANITARY SEWER FACILITIES AND WATER MAINS SHALL BE FLUSHED AND CLEANED, PRIOR TO CITY OF ARLINGTON ACCEPTANCE. SANITARY SEWER FACILITIES AND WATER MAINS SHALL ALSO BE PRESSURE-TESTED PRIOR TO ACCEPTANCE.
18. PROVIDE AND MAINTAIN THE SEDIMENTATION COLLECTION FACILITIES TO INSURE SEDIMENT LOADED WATERS TO NOT ENTER THE NATURAL DRAINAGE SYSTEM.
19. EXCEPT AS PROVIDED ON SPECIAL LANDSCAPING PLANS, ALL DISTURBED AREAS SUCH AS DETENTION FACILITIES, ROADWAY SHOULD BE SEED WITH A PERENNIAL GRASS TO MINIMIZE EROSION. GRASS SEEDING WILL BE DONE USING AN APPROVED HYDROSEEDER OR AS OTHERWISE APPROVED BY THE CITY OF ARLINGTON ENGINEERING DEPARTMENT.
20. IF CUT AND FILL SLOPES EXCEED A MAXIMUM OF TWO FEET HORIZONTAL TO ONE FOOT VERTICAL, A ROCK OR CONCRETE RETAINING WALL MAY BE REQUIRED. ALL ROCK RETAINING WALLS GREATER THAN FOUR (4) FEET IN HEIGHT ARE TO BE DESIGNED AND CERTIFIED BY A CIVIL ENGINEER EXPERIENCED IN SOILS MECHANICS.
21. STOCKPILES ARE TO BE LOCATED IN SAFE AREAS AND ADEQUATELY PROTECTED BY TEMPORARY SEEDING AND MULCHING.
22. IMMEDIATELY FOLLOWING FINISH GRADING, PERMANENT VEGETATION WILL BE APPLIED. (MINIMUM 400 PER ACRE). THIS IS TO INCLUDE THE FOLLOWING: 20% ANNUAL, PERENNIAL OR HYBRID RYE GRASS; 40% CREEPING RED FESCUE; AND 40% WHITE CLOVER.
23. FERTILIZER SHALL BE APPLIED AT 400# PER ACRE OF 10-20-20 (TEN (10) POUNDS PER 1,100 SQUARE FEET) OR EQUIVALENT.
24. PREPARATION OF SURFACE: ALL AREAS TO BE SEEDING SHALL BE CULTIVATED TO THE SATISFACTION OF THE CITY ENGINEER. THIS MAY BE ACCOMPLISHED BY DOING RAKING, HARROWING OR OTHER ACCEPTABLE MEANS.
25. ALL SIDE SEWERS AND STORM DRAIN STUBS SHALL BE CAPPED WITH WATERPROOF PLUGS AND SHALL BE MARKED FOR LOCATION WITH PRETREATED 2"x4" 3" PAINTED WHITE AND MARKED "SEWER" AND "DRAIN", RESPECTIVELY, NOTING DEPTH OF PIPE.
26. NO WATER METERS WILL BE INSTALLED UNTIL THE METER BOX AND METER FITTINGS ARE IN PLACE AND APPROVED BY THE CITY. ALL WATER SERVICES THAT EXCEED 60 FEET IN LENGTH FROM METER TO METER SHALL BE 1" COPPER.
27. SANITARY SEWER STUBS SHALL BE NOT LESS THAN 5 FEET BUT NOT MORE THAN 10 FEET DEEP AT PROPERTY LINE.



TRIAD ASSOCIATES
 11814 115th Ave. NE, Suite 305
 Kirkland, WA 98034
 206.821.8448
 Fax 206.821.3481
 Land Surveying
 Land Use Planning
 Landscape Architecture
 15 Oregon Ave, Suite 305
 Tacoma, WA 98409
 206.474.2480
 Fax 206.474.2480
 Civil Engineering
 Project Management
 Site Design

DETAILS AND NOTES

GLENEAGLE
 SECTOR III C

WASHINGTON

CITY OF ARLINGTON

NO.	DATE	REVISION	BY	CHK
1	4/2/97	REVISED PER CLIENT		

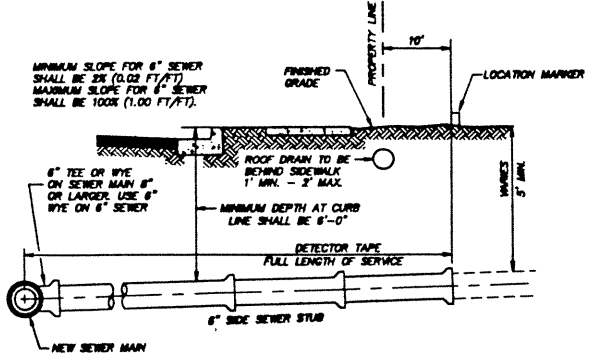
PROJECT MANAGER: JON H. NELSON, PE
 DESIGNED: JOHANN G. FREDRICK
 CADD: J. FREDRICK/A. TUCKER
 CHECKED:
 DATE: 3/4/97
 SCALE: HORIZ. 1" = 1'
 VERT. N/A



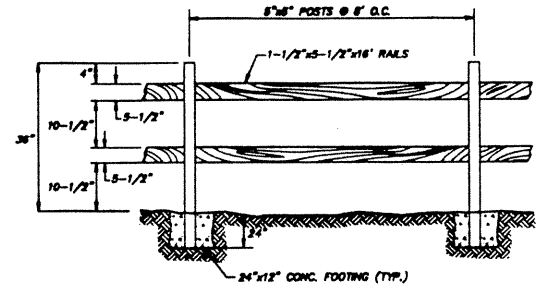
EXPRES 3/19/98
 4/1/97
 STAMP NOT VALID UNLESS SIGNED AND DATED

DRAWING NUMBER
97007
13 of 18

SAFCO PRODUCTS • NEW HOPE, MINNESOTA
 REORDER BY PART NUMBER 6551



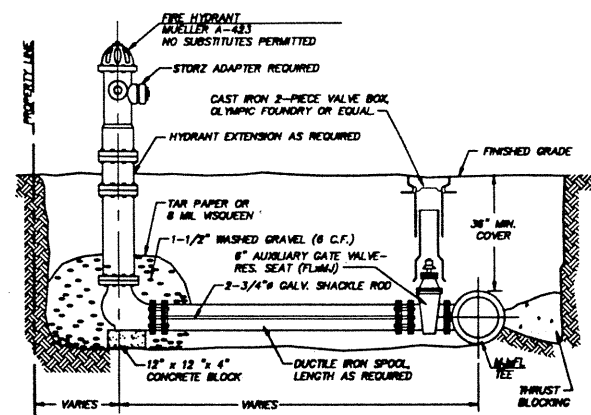
SERVICE CONNECTION DETAIL
 NOT TO SCALE



SPLIT RAIL FENCE DETAIL
 NOT TO SCALE

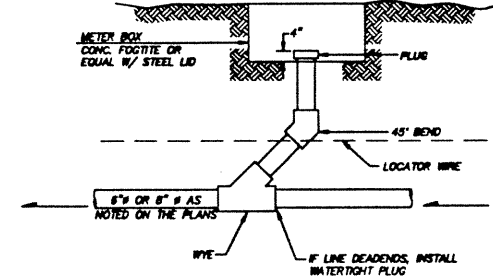
DRAWING NUMBER

SAFCO PRODUCTS • NEW HOPE, MINNESOTA
 REORDER BY PART NUMBER 6551

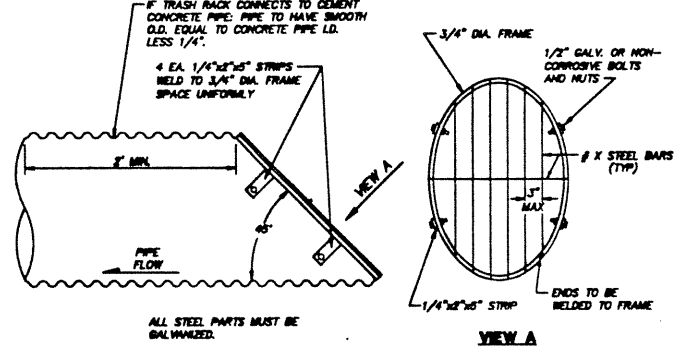


- NOTES:
1. PAINT HYDRANT WITH TRAFFIC YELLOW #1071 AS MANUFACTURED BY FARWEST PAINT MFG. CO.
 2. DUC-LUGS JOINT RESTRAINT SYSTEM.
 3. PAINT SHACKLE RODS WITH BITUMINOUS PAINT ACCORDING TO APWA STANDARDS, SPECIFICATION #77-3.02A.
 4. INSTALL BLUE PAVEMENT MARKER (AS REQUIRED BY THE CITY OF ARLINGTON).
 5. MEGA-LUGS REQUIRED ON SHACKLE RODS.

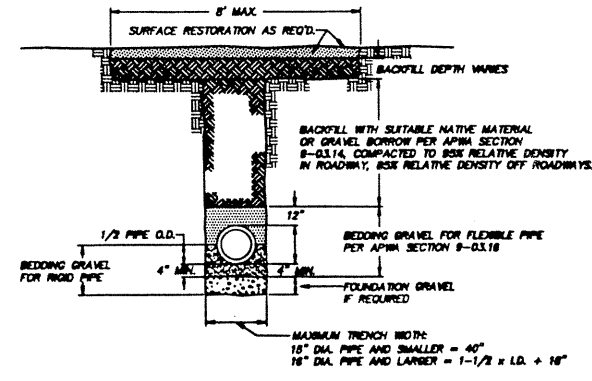
FIRE HYDRANT ASSEMBLY
 NOT TO SCALE



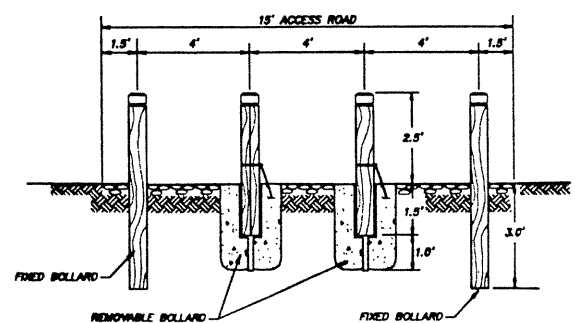
PVC CLEANOUT DETAIL
 NOT TO SCALE
 USE FOR SANITARY SEWER AND STORM DRAIN WHERE SHOWN ON PLANS



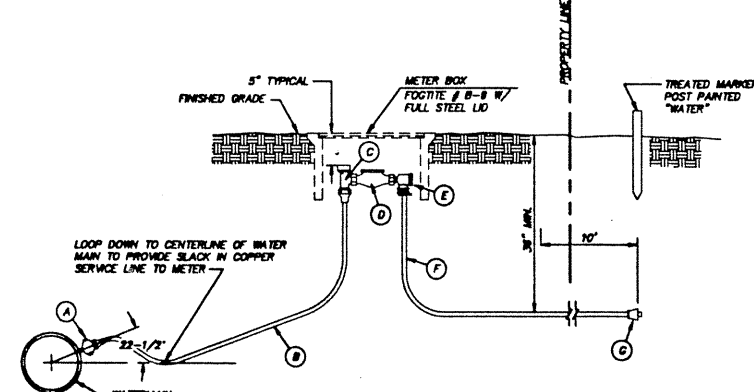
TRASH RACK DETAIL
 NOT TO SCALE



TRENCH BEDDING DETAIL
 NOT TO SCALE



BOLLARD BARRIER DETAIL
 NOT TO SCALE



- NOTES:
- A. CORPORATION STOP W/CC THREADS FOR COPPER SERVICE EQUAL TO MUELLER CO. H-1502. INSTALLED DIRECTLY INTO DUCTILE IRON WITH (110 MUELLER ONLY) 1 PTHCOMP. ADAPTER.
 - B. TYPE 'K' SOFT COPPER TUBING.
 - C. WATER METER STOP WITH LOCK WING FOR COPPER SERVICE EQUAL TO MUELLER CO. H-110.
 - D. BLANK STOP THE LENGTH OF FUTURE WATER METER. (LENGTH VARIES DEPENDING ON SERVICE SIZE.)
 - E. 90° ANGLE CHECK COUPLING W/ 110 ADAPTER.
 - F. TYPE K COPPER EXTENDED 10' BEYOND PROPERTY LINE.
 - G. MUELLER 110 x 1 PT FEMALE ADAPTER AT END.
 - H. APPROVED METER SETTER MAY BE SUBSTITUTED.
 - I. THE SERVICE LINE FROM THE METER TO THE LOTS MUST BE INSTALLED AFTER ALL OTHER UTILITIES ARE INSTALLED.

TYPICAL WATER SERVICE
 NOT TO SCALE

TRIAD ASSOCIATES
 11814 118th Ave. NE
 Kirkland, WA 98034
 206.821.8448
 Fax 206.821.9481

15 Oregon Ave.
 Suite 202
 Tacoma, WA 98402
 206.474.3988
 Fax 206.474.3988

Land Surveying
 Land Use Planning
 Landscape Architecture

Civil Engineering
 Project Management
 Site Design

GLENEAGLE
 SECTOR III C

DETAILS
 WASHINGTON
 CITY OF ARLINGTON

NO.	DATE	REVISION	BY	CHK
1	4/4/97	REVISED FOR CLERT		

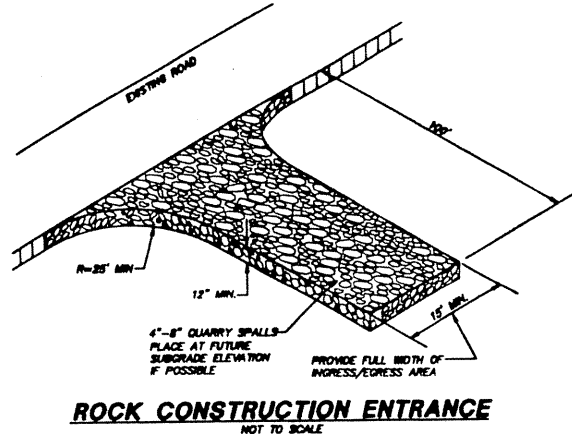
PROJECT MANAGER: JON K. NELSON, P.E.
 DESIGNER: JOANNE D. FREDRICK
 CAD: J. FREDRICK/R. RUCKER
 CHECKED:
 DATE: 3/4/97
 SCALE: HORIZ. 1" = 1' VERT. N/A



STAMP NOT VALID UNLESS SIGNED AND DATED
 4/4/97

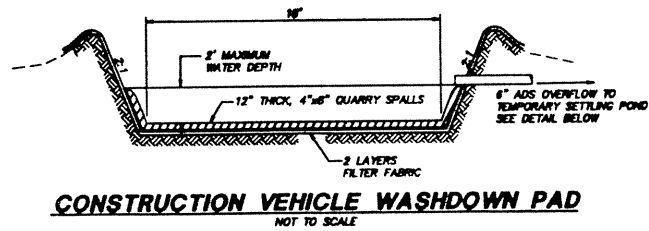
DRAWING NUMBER
97007
14.6.18
 SAFCO PRODUCTS • NEW HOPE, MINNESOTA
 REORDER BY PART NUMBER 6551

DRAWING NUMBER
 SAFCO PRODUCTS • NEW HOPE, MINNESOTA
 REORDER BY PART NUMBER 6551



ROCK CONSTRUCTION ENTRANCE
 NOT TO SCALE

MAINTENANCE
 THE ENTRANCE SHALL BE MAINTAINED IN A CONDITION WHICH WILL PREVENT TRACKING OR FLOW OF MUD ONTO PUBLIC RIGHTS-OF-WAY. THIS MAY REQUIRE PERIODIC TOP DRESSING WITH 4 TO 8-INCH STONE, AS CONDITIONS DEMAND, AND REPAIR AND/OR CLEANOUT OF ANY STRUCTURES USED TO TRAP SEDIMENT. ALL MATERIALS SPILLED, DROPPED, WASHED OR TRACKED FROM VEHICLES ONTO ROADWAYS OR INTO STORM DRAINS MUST BE REMOVED IMMEDIATELY.

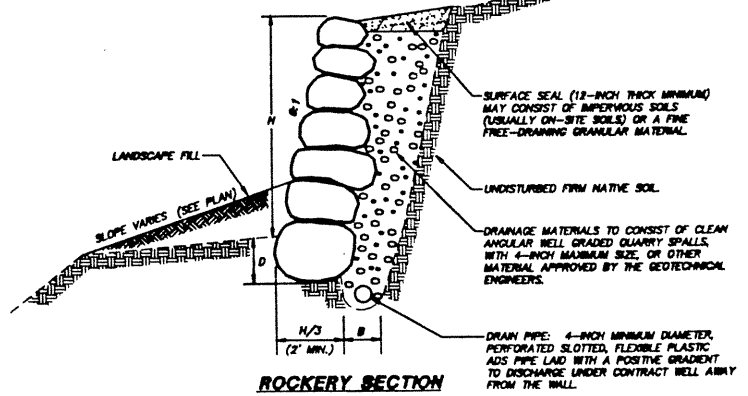


CONSTRUCTION VEHICLE WASHDOWN PAD
 NOT TO SCALE

APPROXIMATE

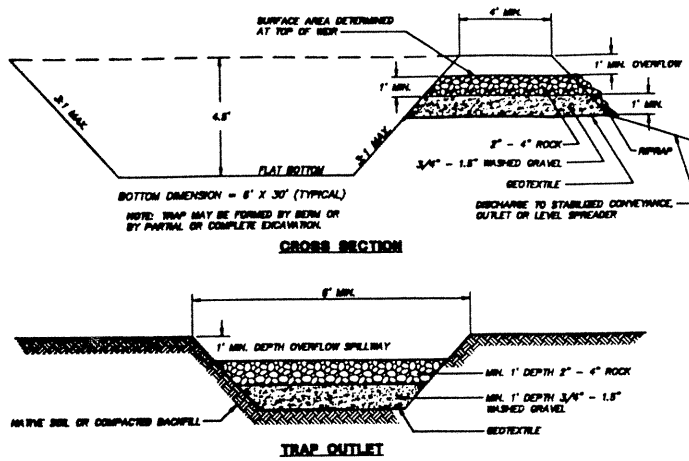
SIZE	HEIGHT - LBS.	DIAMETER
1 MAN	50-200	12 - 18"
2 MAN	200-700	18 - 30"
3 MAN	700-2000	30 - 36"
4 MAN	2000-4000	36 - 48"
5 MAN	4000-8000	48 - 54"
6 MAN	8000-8000	54 - 60"

REFERENCE: LOCAL QUARRY WEIGHT STUDY USING AVERAGE WEIGHTS OF NO LESS THAN 6 ROCKS OF EACH MAN SIZE CONDUCTED IN JANUARY, 1988.



ROCKERY SECTION
 NOT TO SCALE

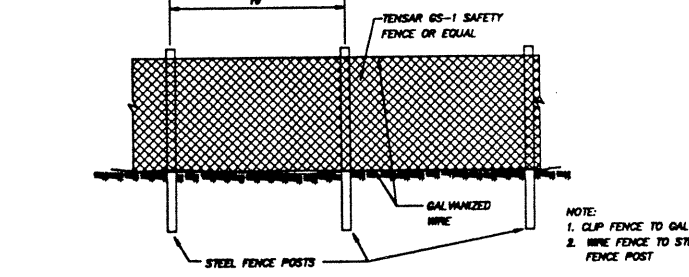
NOTES:
 ROCKERY CONSTRUCTION IS A DRAFT AND DEPENDS LARGELY ON THE SKILL AND EXPERIENCE OF THE BUILDER. A ROCKERY IS A PROTECTIVE SYSTEM WHICH HELPS RETARD THE WEATHER AND EROSION PROCESS ON AN EXPOSED SOIL FACE. WHILE BY ITS NATURE, MASS, SIZE AND SHAPE OF THE ROCKS IT WILL PROVIDE SOME DEGREE OF RETENTION, IT IS NOT A DESIGNED OR ENGINEERED SYSTEM IN THE SENSE A REINFORCED CONCRETE RETAINING WALL WOULD BE CONSIDERED DESIGNED OR ENGINEERED. THE DEGREE OF RETENTION ACHIEVED IS DEPENDENT ON THE SIZE OF THE ROCK USED; THAT IS, THE MASS OR WEIGHT, AND THE HEIGHT OF THE WALL BEING CONSTRUCTED. THE LARGER THE ROCK, THE MORE COMPETENT THE ROCKERY SHOULD BE. ROCKERIES SHOULD BE CONSIDERED MAINTENANCE ITEMS THAT WILL REQUIRE PERIODIC INSPECTION AND REPAIR. THEY SHOULD BE LOCATED SO THAT THEY CAN BE REACHED BY A CONTRACTOR IF REPAIRS BECOME NECESSARY. ROCK MATERIALS SHALL BE FRESH, DURABLE, FREE OF DEFECT SUCH AS WEAK JOINTS AND FRACTURES, AND MEET OR EXCEED ROCK QUALITY AS DEFINED BY ARC STANDARD ROCKERY CONSTRUCTION GUIDELINES DATED 4/4/78. MINIMUM THICKNESS OF ROCK FILTER LAYER IS 12 INCHES. MINIMUM EMBEDMENT D = 12 INCHES OR 1/2 THE BASE ROCK THICKNESS, WHICHEVER IS GREATER, INTO UNDISTURBED NATIVE SOIL PER CITY OF BELLEVUE REQUIREMENTS. MAXIMUM ROCKERY HEIGHT H = 12 FEET. ROCKERIES GREATER THAN 6 FEET IN HEIGHT TO BE INSTALLED UNDER PERIODIC OR FULL TIME OBSERVATION OF THE GEOTECHNICAL ENGINEER. UNLESS OTHERWISE SPECIFIED IN WRITING BY THE ROCKERY "DESIGNER", ALL ROCKS PLACED IN THE LOWER TWO-THIRDS OF THE ROCKERY SHOULD BE 5 TO 8 MAN ROCK, 4000 LBS. OR LARGER. ROCKS PLACED ABOVE THIS LEVEL SHOULD GRADUALLY DECREASE IN SIZE WITH INCREASING WALL HEIGHT USING 3 TO 5 MAN ROCK, 700 TO 8000 LBS. THE LONG DIMENSION OF THE ROCKS SHOULD EXTEND BACK TOWARDS THE CUT FACE TO PROVIDE MAXIMUM STABILITY. BASES OF THE ROCKS SHOULD BE NORMALLY INCLINED DOWNWARD TOWARD THE SLOPE FACE. ROCKS SHOULD BE PLACED TO AVOID CONTINUOUS JOINT PLANES IN VERTICAL OR LATERAL DIRECTIONS. EACH ROCK SHOULD BEAR ON TWO OR MORE ROCKS BELOW IT, WITH GOOD FLAT-TO-FLAT CONTACT. OPENINGS BETWEEN FACING ROCKS TO BE CHINKED TO PREVENT RAVELLING OF BACKFILL THROUGH OPENINGS. BACKFILL (DRAINAGE MATERIALS) TO BE PLACED BEHIND ROCKS AS EACH COURSE OF ROCK IS SET. ALL ROCKERIES OVER 4 FEET IN HEIGHT SHOULD BE CONSTRUCTED ON BASIS OF WALL MASS, NOT SQUARE FOOTAGE OF FACE.



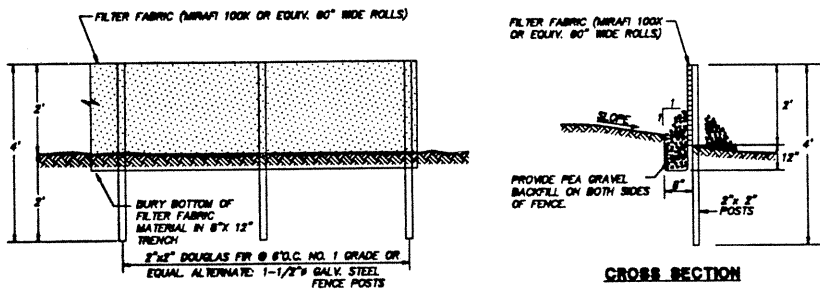
CROSS SECTION
 NOT TO SCALE

TRAP OUTLET
 NOT TO SCALE

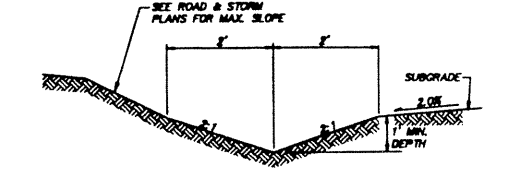
MAINTENANCE STANDARDS
 1. SEDIMENT SHALL BE REMOVED FROM THE TRAP WHEN IT REACHES 1 FOOT IN DEPTH.
 2. ANY DAMAGE TO THE TRAP EMBANKMENTS OR SLOPES SHALL BE REPAIRED.



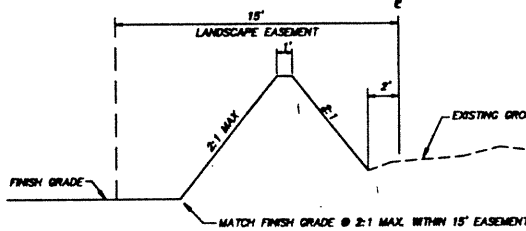
TEMPORARY CONSTRUCTION FENCE
 NOT TO SCALE



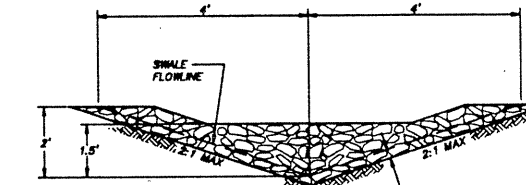
FILTER FENCE DETAIL
 NOT TO SCALE



TEMPORARY INTERCEPTOR SWALE DETAIL
 NOT TO SCALE



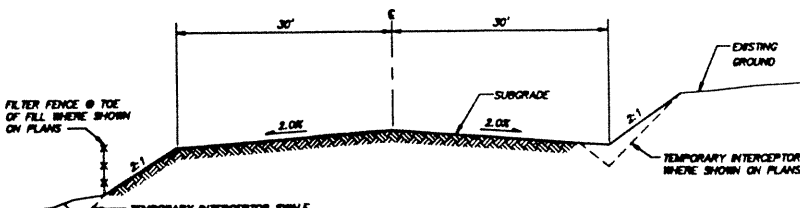
BERM DETAIL
 NOT TO SCALE



DITCH SLOPE	CHECK DAM SPACING
0 - 5%	150'
5 - 10%	100'
>10%	50'



ROCK CHECK DAM CROSS SECTION
ROCK CHECK DAM DETAILS
 NOT TO SCALE



NO.	DATE	REVISION	BY	CHK

TRIAD ASSOCIATES
 11814 118th Ave. NE
 Kirkland, WA 98034
 206.821.9449
 Fax 206.821.9481

15 Oregon Ave.
 Suite 20
 Tacoma, WA 98402
 206.474.3299
 Fax 206.474.3298

Lead Surveyor
 Lead Use Planner
 Landscape Architect

Civil Engineer
 Project Manager
 Site Designer

EROSION/SEDIMENTATION CONTROL DETAILS
 WASHINGTON
GLENEAGLE
 SECTOR III C
 CITY OF ARLINGTON

NO.	DATE	REVISION	BY	CHK

PROJECT MANAGER: JON K. NELSON, P.E.
 DESIGNER: JOHNNIE D. FRANKLIN
 CAD: ANNE BOLLAR
 CHECKED:
 DATE: 3/4/97
 SCALE: HORIZ. 1" = 1'
 VERT. N/A

EXPRESSES 3/16/96
 4/4/97
 STAMP NOT VALID UNLESS SIGNED AND DATED
 JOB NUMBER

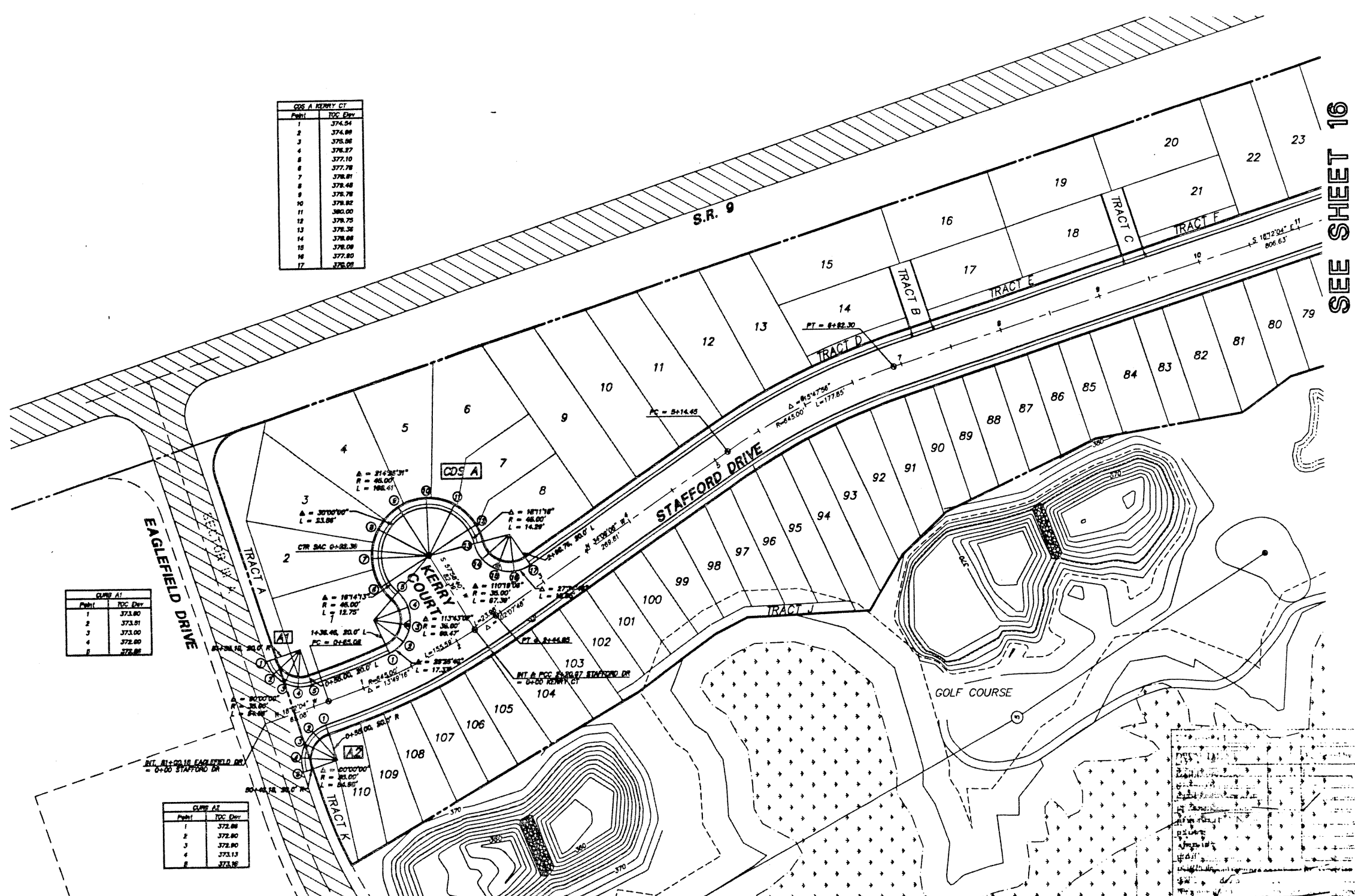
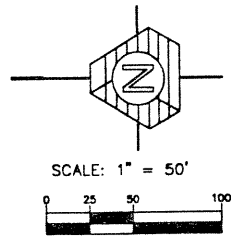
DRAWING NUMBER
97007
15 of 18

SAFCO PRODUCTS • NEW HOPE, MINNESOTA
 REORDER BY PART NUMBER 6551

DRAWING NUMBER

SAFCO PRODUCTS • NEW HOPE, MINNESOTA
 REORDER BY PART NUMBER 6551

**NOTE: ELEVATIONS SPECIFIED ARE
 TOP OF CURB**



Point	TOC Elev.
1	374.54
2	374.89
3	375.06
4	376.27
5	377.10
6	377.78
7	378.01
8	378.48
9	378.78
10	378.82
11	380.00
12	378.75
13	378.35
14	378.88
15	378.08
16	377.80
17	378.01

Point	TOC Elev.
1	373.80
2	373.01
3	373.00
4	372.80
5	372.88

Point	TOC Elev.
1	372.88
2	372.80
3	372.80
4	373.13
5	373.88

TRIAD ASSOCIATES
 11814 118th Ave. NE
 Kirkland, WA 98034
 206.821.8448
 Fax: 206.821.9481

15 Oregon Ave.
 Suite 30
 Tacoma, WA 98404
 206.874.3948
 Fax: 206.874.3948

Land Surveying
 Land Use Planning
 Landscape Architecture

Civil Engineer
 Project Manager
 Site Designer

GLENEAGLE
 SECTOR III C

CURB AND ALIGNMENT SHEET

SEE SHEET 16

CITY OF ARLINGTON, WASHINGTON

PROJECT MANAGER: JON R. NELSON, P.E.
 DESIGNER: JOHNNIE D. FREDRICK
 CAD: J. FISHER/KE. RUCKEN
 CHECKER:
 DATE: 3/4/97
 SCALE: HORIZ. 1" = 50'
 VERT. 1" = 5'

EXPIRES 3/31/98
 4/4/97
 STAMP NOT VALID
 UNLESS SIGNED AND DATED

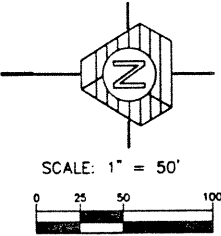
DRAWING NUMBER
97007
16 of 18

SAFCO PRODUCTS • NEW HOPE, MINNESOTA
 REORDER BY PART NUMBER 6551

DRAWING NUMBER

SAFCO PRODUCTS • NEW HOPE, MINNESOTA
 REORDER BY PART NUMBER 6551

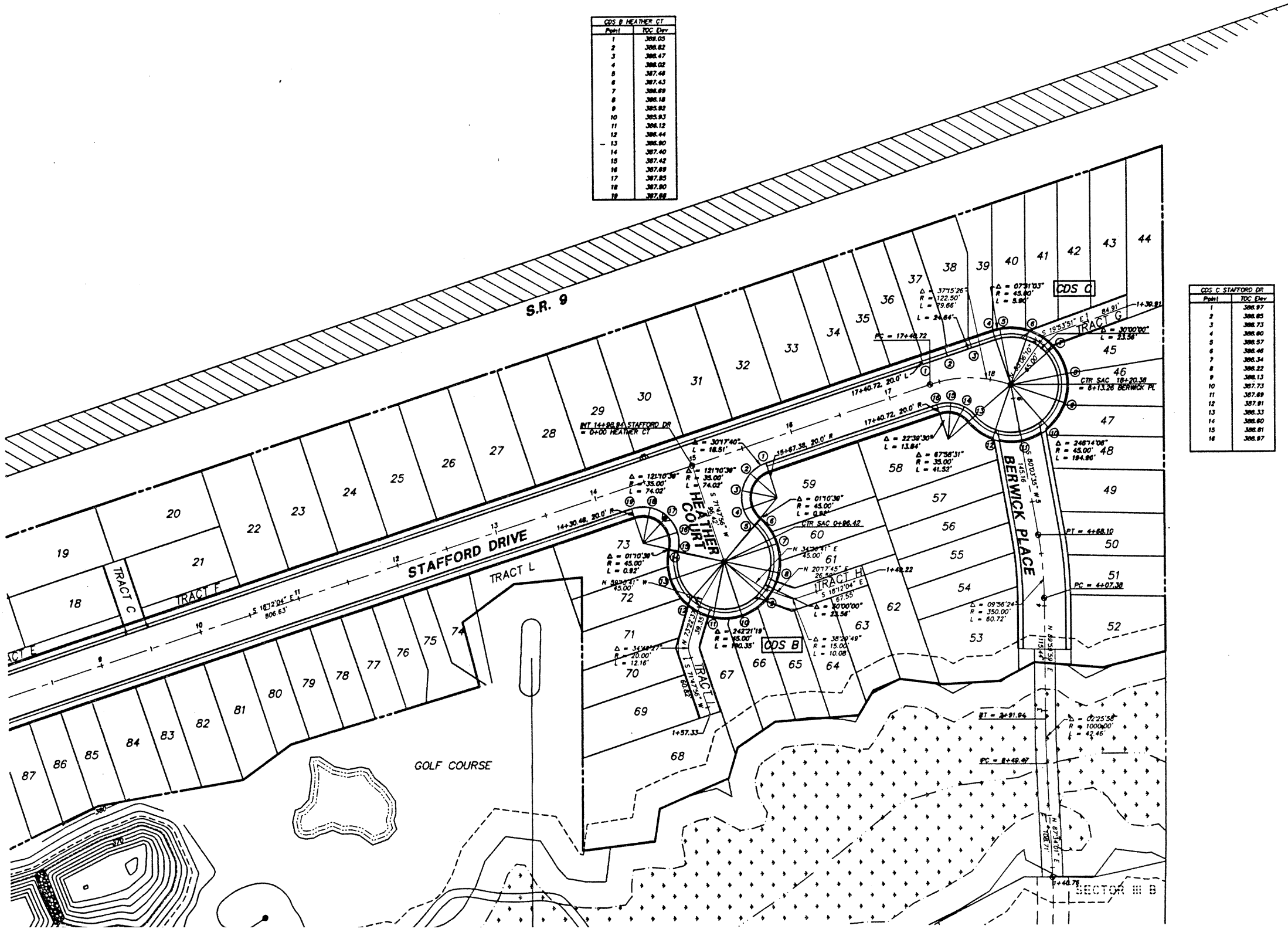
NOTE: ELEVATIONS SPECIFIED ARE
 TOP OF CURB



Point	Top of Curb Elevation
1	308.05
2	308.62
3	308.47
4	308.02
5	307.48
6	307.43
7	308.89
8	308.18
9	305.82
10	305.83
11	308.12
12	308.44
13	308.90
14	307.40
15	307.42
16	307.69
17	307.85
18	307.90
19	307.69

Point	Top of Curb Elevation
1	308.97
2	308.85
3	308.73
4	308.60
5	308.57
6	308.48
7	308.34
8	308.22
9	308.13
10	307.73
11	307.69
12	307.91
13	308.33
14	308.60
15	308.81
16	308.97

SEE SHEET 15



TRIAD ASSOCIATES
 11814 118th Ave. NE
 Kirkland, WA 98034
 206.821.8448
 Fax: 206.821.3481

15 Oregon Av.
 Suite 30
 Tacoma, WA 98404
 206.474.2487
 Fax: 206.474.2488

Land Surveying
 Land Use Planning
 Landscape Architecture

Civil Engineers
 Project Managers
 Site Design

CURB AND ALIGNMENT SHEET

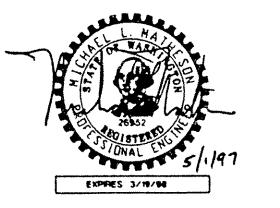
GLENEAGLE
 SECTOR III C

WASHINGTON

CITY OF ARLINGTON,

NO.	DATE	REVISION	BY	CR
1	6/1/97	REVISED PER COMPUTED ROAD C	JDF	ML

PROJECT MANAGER: JON W. NELSON, P.E.
 DESIGNED: JOANNE D. FREDRICK
 CALCD: J. FREDRICK/R. TUCKER
 CHECKED:
 DATE: 3/4/97
 SCALE: HORIZ: 1" = 50'
 VERT: 1" = 5'



STAMP NOT VALID
 UNLESS SIGNED AND DATED

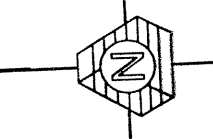
DRAWING NUMBER
97007
17 of 18

SAFCO PRODUCTS • NEW HOPE, MINNESOTA
 REORDER BY PART NUMBER 8551

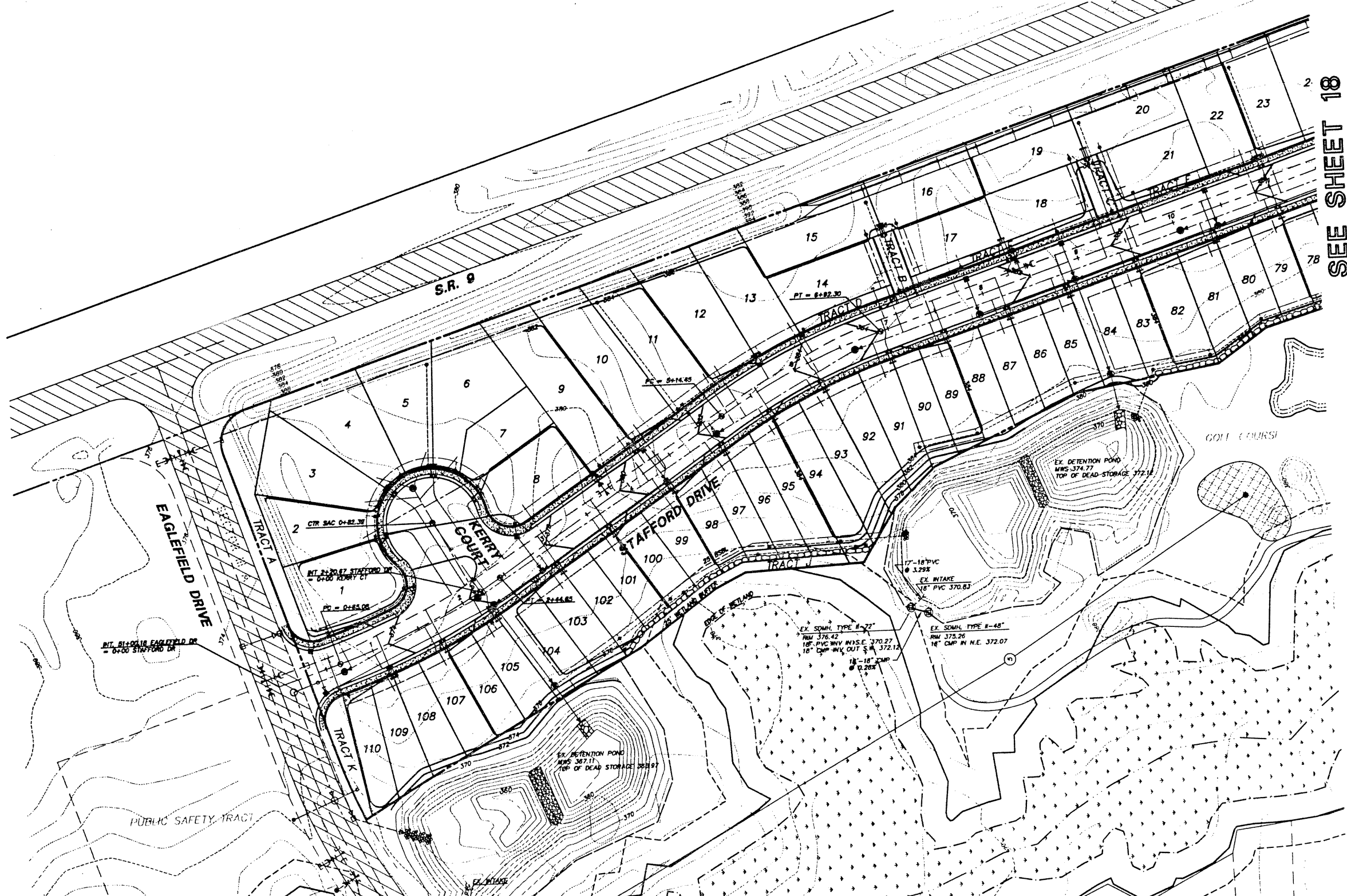
DRAWING NUMBER

SAFCO PRODUCTS • NEW HOPE, MINNESOTA
 REORDER BY PART NUMBER 6551

CAUTION:
 LOCATION OF EXISTING UTILITIES
 SHOWN ARE APPROXIMATE AND MAY
 NOT BE ACCURATE OR ALL
 INCLUDE. IT IS THE CONTRACTOR'S
 RESPONSIBILITY TO FIELD VERIFY
 LOCATION OF UTILITIES PRIOR TO
 PROCEEDING WITH CONSTRUCTION.



SCALE: 1" = 50'
 0 25 50 100



SEE SHEET 18

TRIAD ASSOCI
 11814 112th Ave. NE
 Kirkland, WA 98034
 206.821.8448
 Fax 206.821.8481

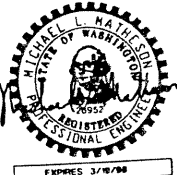
Land Surveying
 Land Use Planning
 Landscape Architecture

COMPOSITE GRADING AND UTILITY PLAN

GLENEAGLE

NO.	DATE	REVISION
1	4/25/97	REVISED AS AND BEST SERVICE

PROJECT MANAGER: JON R. HELL
 DESIGNER: D. HANDBRO
 CADD: JOANNE D.
 CHECKED:
 DATE: 3/4/97
 SCALE: HORIZ. 1" = 100'
 VERT. 1" = 10'



EXPIRES 3/31/98
 4/25/97
 STAMP NOT VALID
 UNLESS SIGNED AND DATED

JOB NUMBER

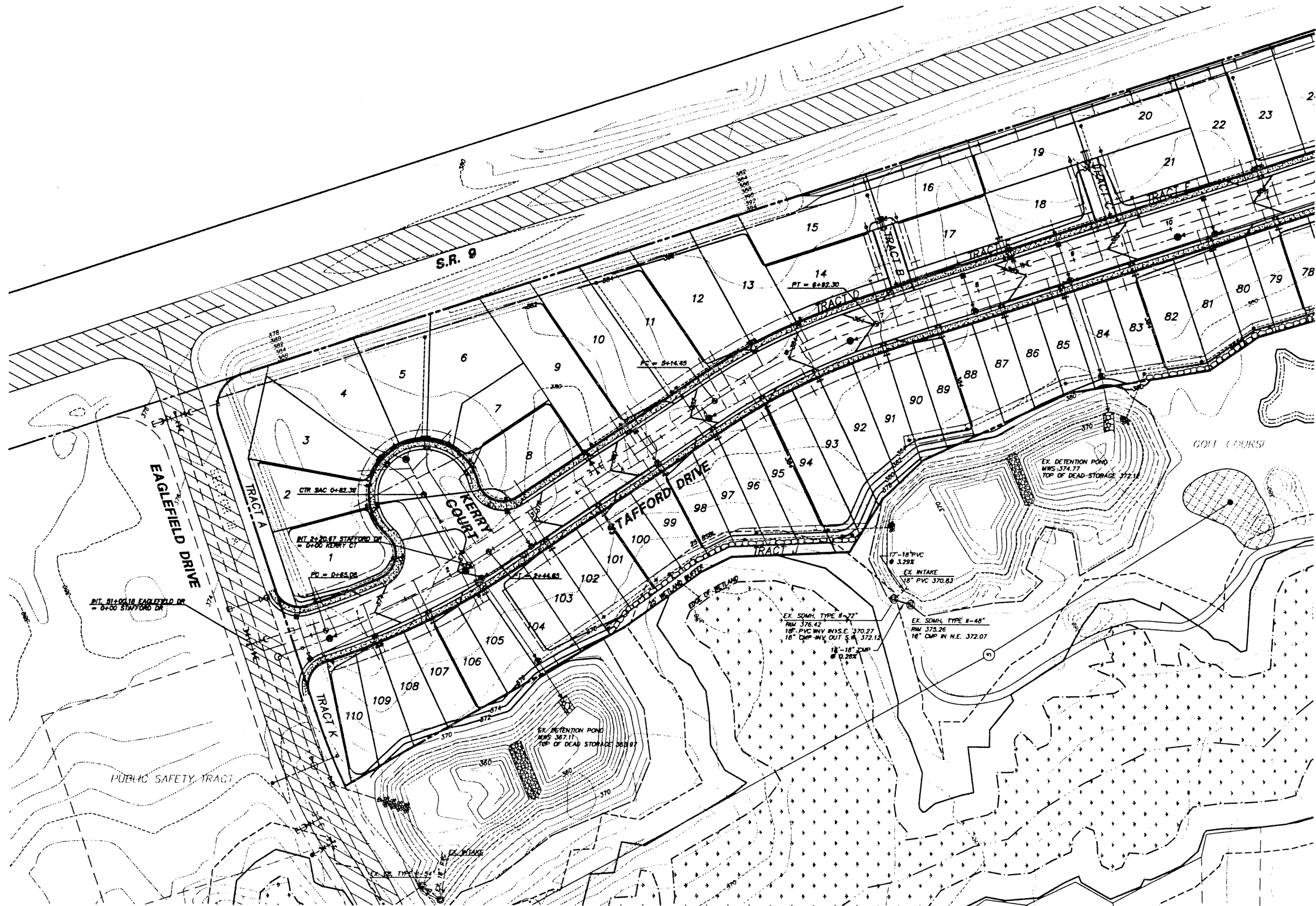
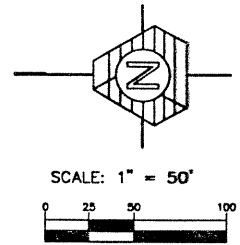
DRAWING NUMBER
97007
17 of 18

SAFCO PRODUCTS • NEW HOPE, MINNESOTA
 REORDER BY PART NUMBER 6551

DRAWING NUMBER

SAFCO PRODUCTS • NEW HOPE, MINNESOTA
 REORDER BY PART NUMBER 6551

CAUTION:
 LOCATION OF EXISTING UTILITIES
 SHOWN ARE APPROXIMATE AND MAY
 NOT BE ACCURATE OR ALL
 INCLUSIVE. IT IS THE CONTRACTOR'S
 RESPONSIBILITY TO FIELD VERIFY
 LOCATION OF UTILITIES PRIOR TO
 PROCEEDING WITH CONSTRUCTION.



SEE SHEET 18



TRIAD ASSOCI
 11814 118th Ave. NE
 Kirkland, WA 98004
 206.821.9448
 Fax: 206.821.9481

Land Surveying
 Land Use Planning
 Landscape Architecture

COMPOSITE GRADING AND UTILITY PLAN

GLENEAGLE

NO.	DATE	REVISION
1	4/23/97	REVISED S.E. AND HIGH SERVICE

PROJECT MANAGER: JON R. HELL
 DESIGNED: D. HANCOCK
 CADDED: JOANNE D.
 CHECKED:
 DATE: 3/4/97
 SCALE: HORIZ. 1" = 100'
 VERT. 1" = 10'

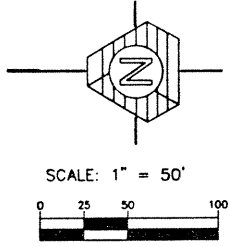


EXPIRES: 3/19/98
 4/23/97
 STAMP NOT VALID
 UNLESS SIGNED AND DATED

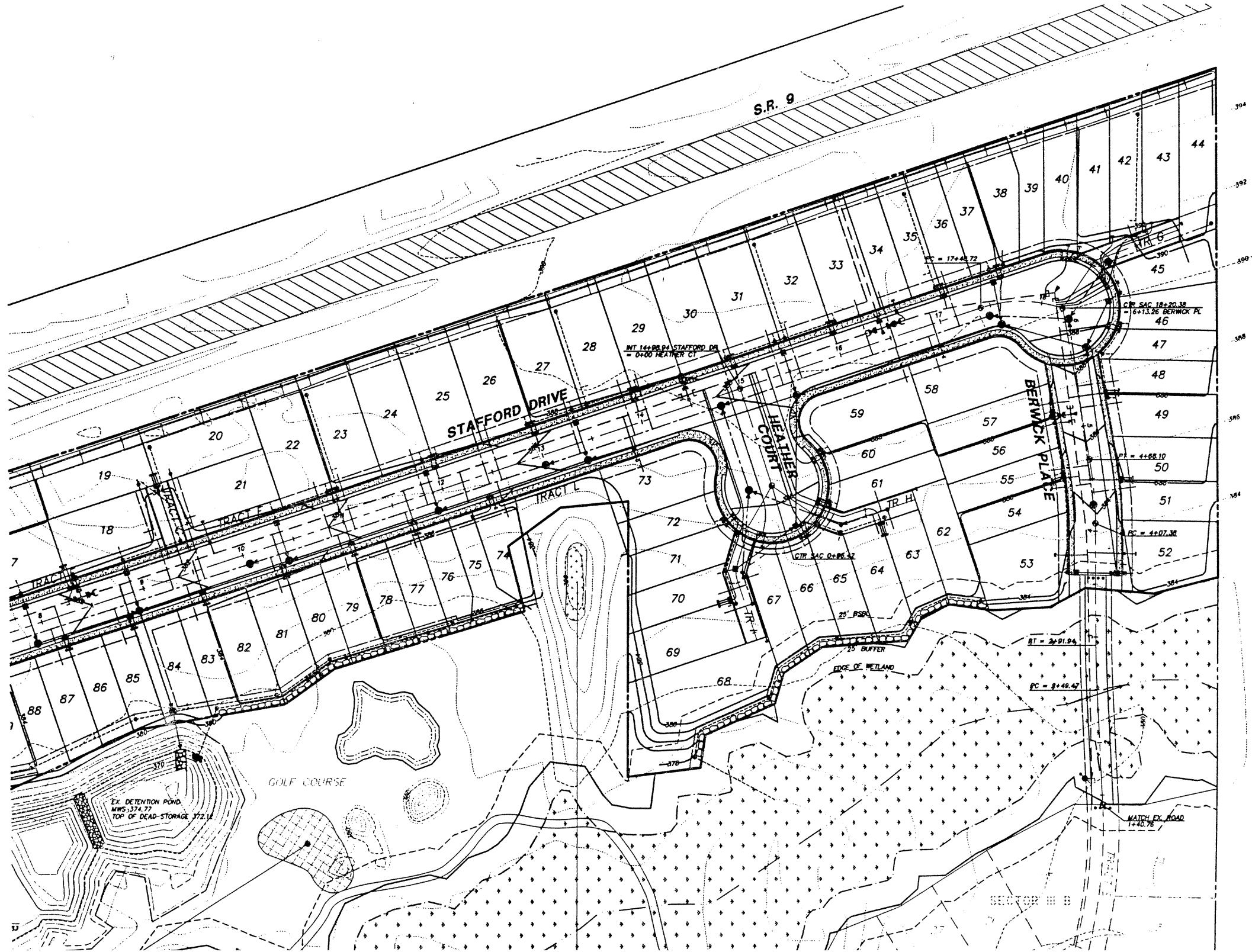
DRAWING NUMBER
97007
18 of 18
 SAFCO PRODUCTS • NEW HOPE, MINNESOTA
 REORDER BY PART NUMBER 6551

DRAWING NUMBER
 SAFCO PRODUCTS • NEW HOPE, MINNESOTA
 REORDER BY PART NUMBER 6551

CAUTION:
 LOCATION OF EXISTING UTILITIES
 SHOWN ARE APPROXIMATE AND MAY
 NOT BE ACCURATE OR ALL.
 INCLUDES IT IS THE CONTRACTOR'S
 RESPONSIBILITY TO FIELD VERIFY
 LOCATION OF UTILITIES PRIOR TO
 PROCEEDING WITH CONSTRUCTION.



SEE SHEET 17



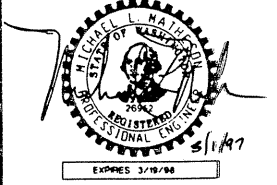
TRIAD ASSOCIATI
 11814 118th Ave. NE
 Kirkland, WA 98034
 206.821.8448
 Fax 206.821.5461
 15 Orago
 Su
 Tacoma, WA
 206.47
 Fax 206.47
 Civil Eng
 Project Mana
 Site

COMPOSITE UTILITY AND GRADING PLAN

GLENEAGLE
 SECTOR III C

NO.	DATE	REVISION	BY
1	4/22/97	REVISED SEE AND WATER SERVICES	P
2	4/1/97	REVISED PER COMPUTED ROAD C	P

PROJECT MANAGER: JON E. NELSON, P.
 DESIGNED: D. HANDBRICH/J. FR.
 CAD: JOANNE D. FREDER
 CHECKED: HLM
 DATE: 3/4/97
 SCALE: HORIZ. 1" = 50'
 VERT. 1" = 5'



STAMP NOT VALID
 UNLESS SIGNED AND DATED