

FILE NUMBER: C-04-014-LP

DOGWOOD MEADOWS

8105 & 8109 172ND ST. N.E.

TAX I.D.: #31052300401600 & 31052300401700

PORTIONS OF THE N.E. 1/4 AND THE S.E. 1/4 OF THE S.E. 1/4 SECTION 23, TOWNSHIP 31 NORTH, RANGE 5 EAST, W.M. SNOHOMISH COUNTY, WASHINGTON



2210 HEWITT AVENUE SUITE NUMBER 204 EVERETT, WA 98201 1 425.387.3820 1 425.259.1958

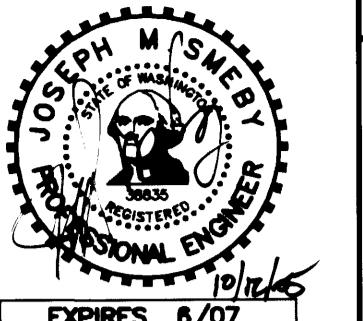
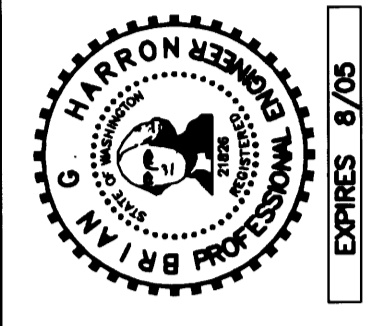


Table with columns: BY, DESCRIPTION, DATE, R#



AS-BUILT DRAWING - BY OMEGA ENGINEERING POND DETAILS



Patrick Harron & Associates, LLC Engineering Planning 14900 Interurban Ave. S. Suite Number 279 Seattle, WA 98168 T 206.674.4659 F 206.674.4660

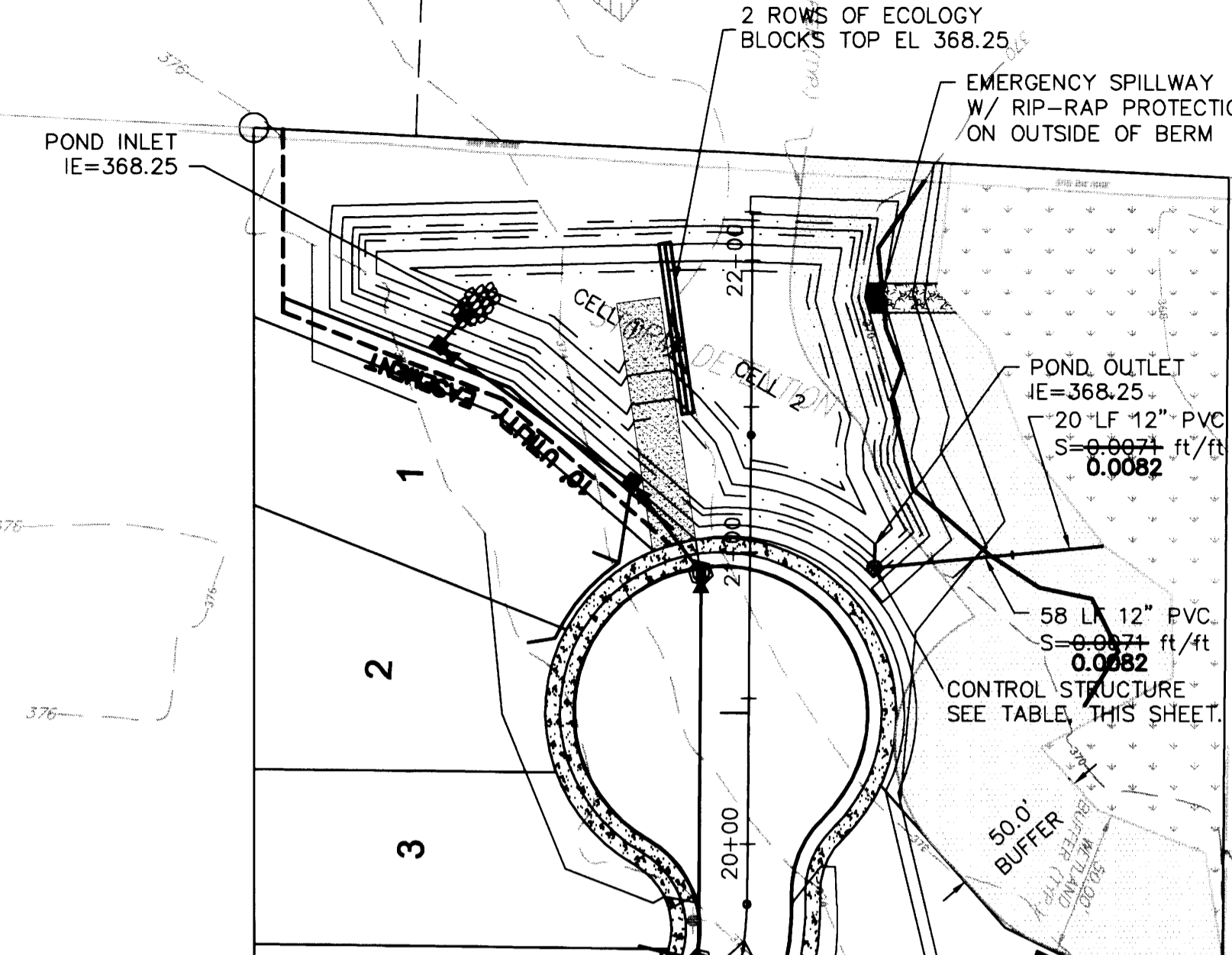
Table with columns: PROJ. NO., DWN. BY, DWN. BY, CHK. BY, QA RVW., APP. BY

DOGWOOD MEADOWS SNOHOMISH COUNTY, WASHINGTON PORTION OF SECTION 23, TOWNSHIP 31 NORTH, RANGE 5 EAST, W.M. DOGWOOD MEADOWS

CITY OF ARLINGTON THIS SHEET HAS BEEN APPROVED PER CONDITIONS ON THE COVER SHEET.

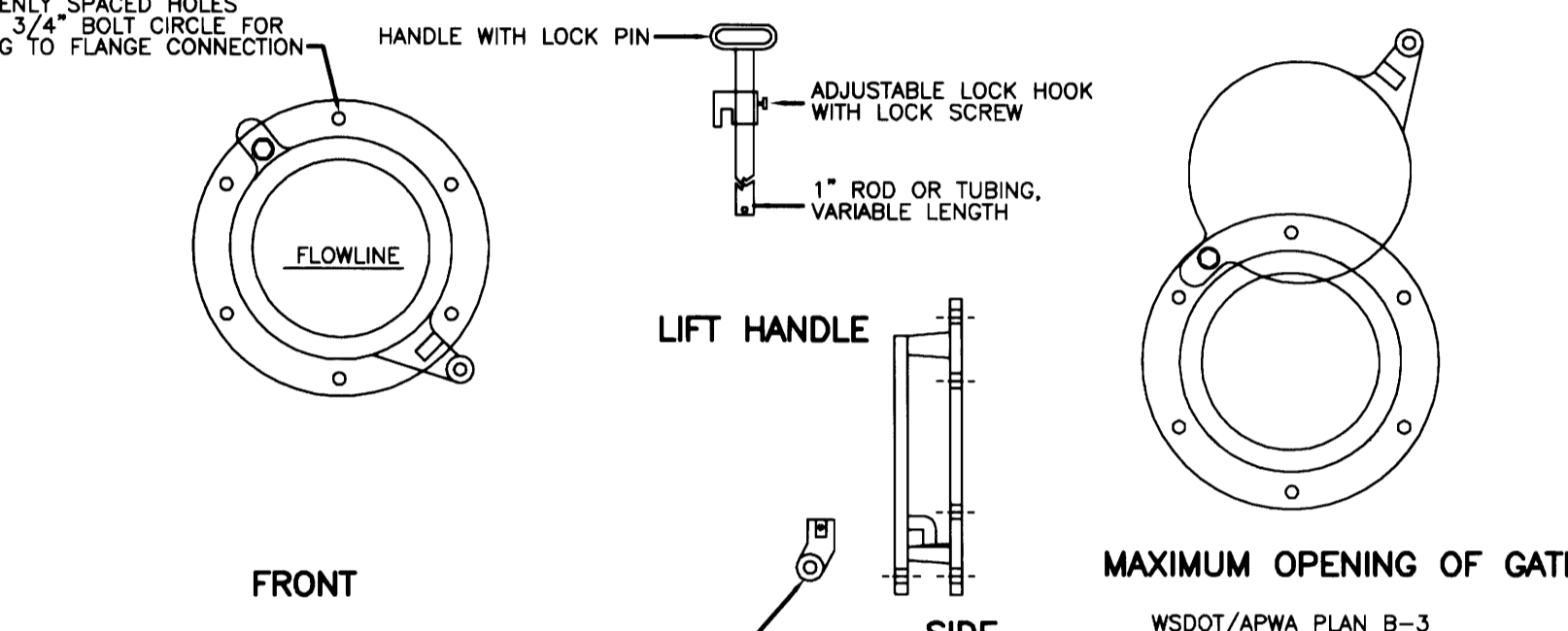
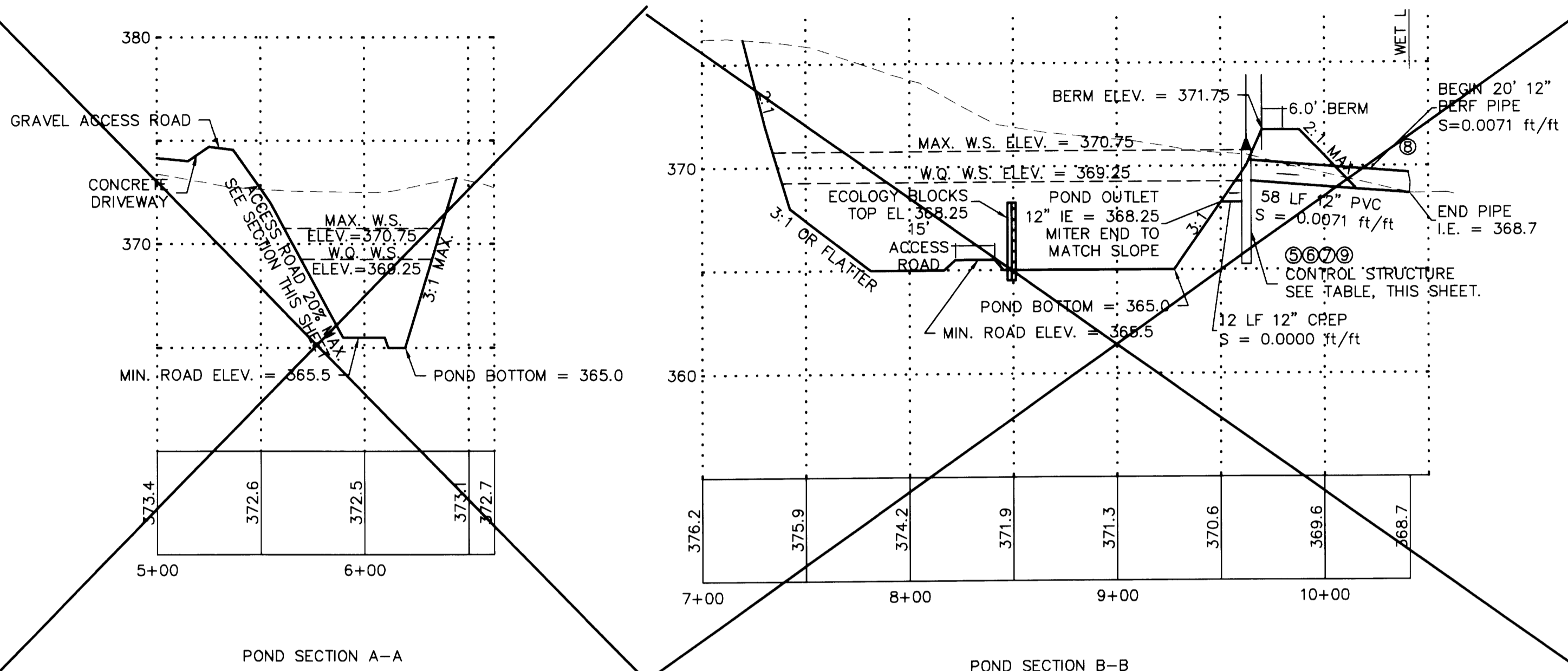
Table with columns: CONSTRUCTION, AS-BUILT ACKNOWLEDGEMENT, By, Date

DRAWING NO. C8_13



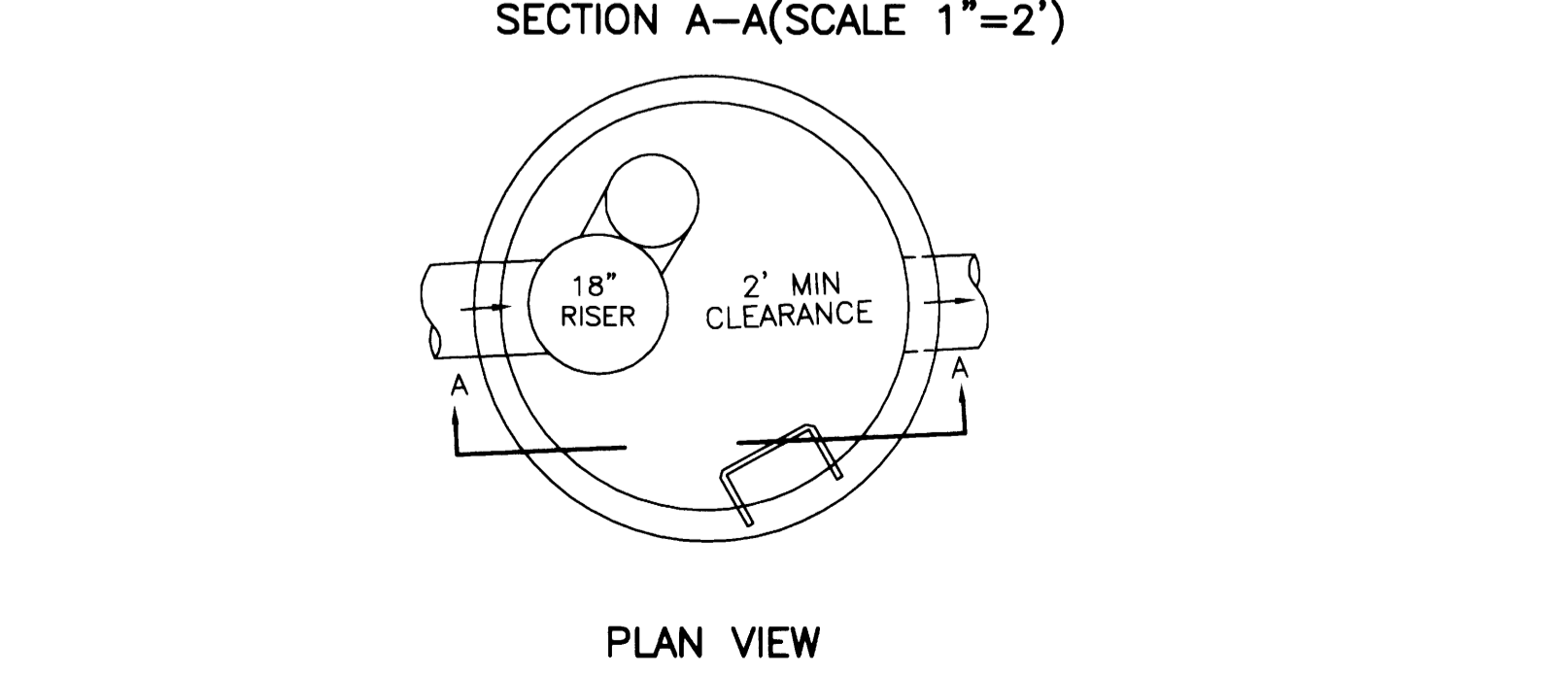
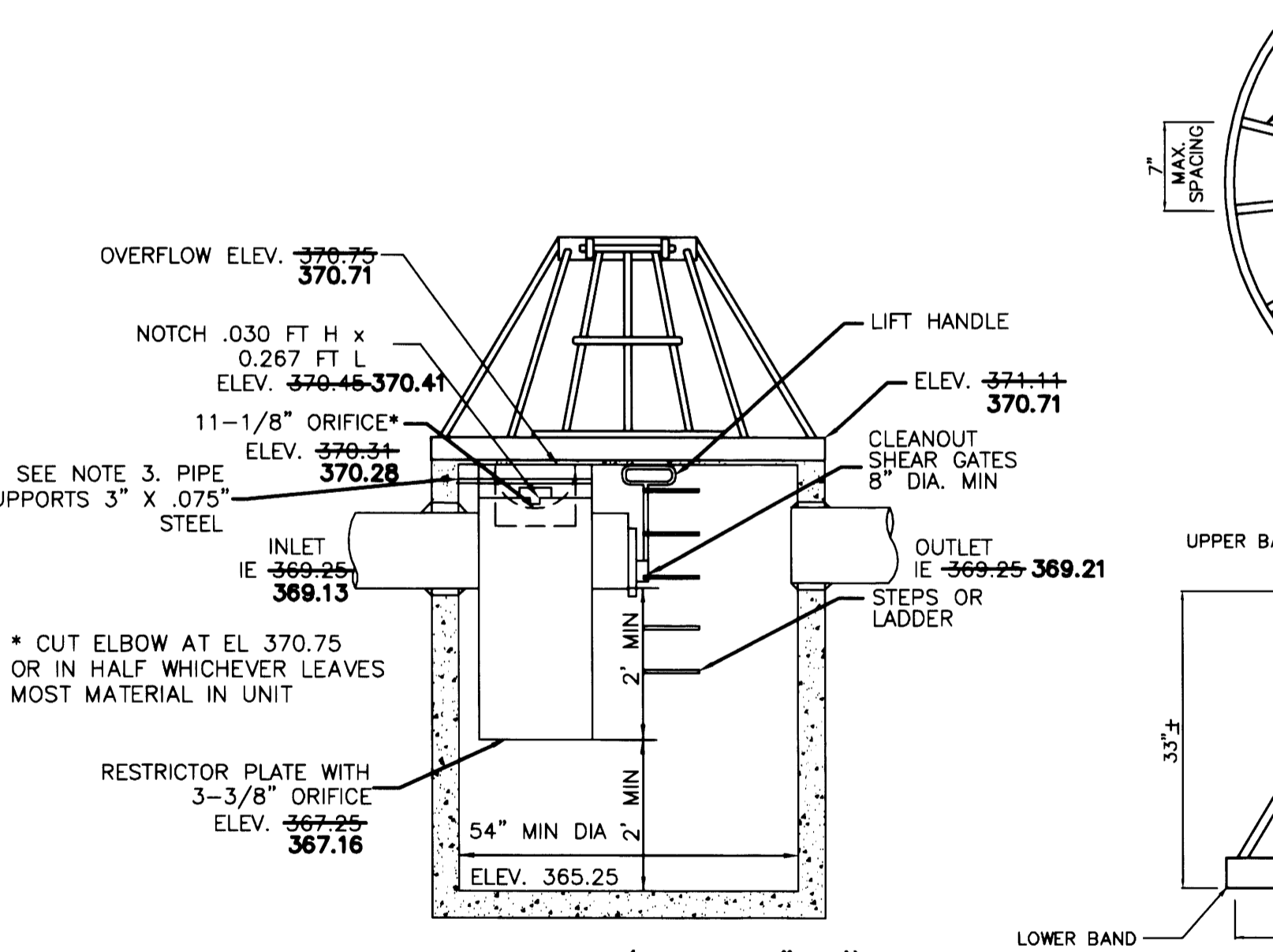
Emergent wetland plant species recommended for wetponds

Table with columns: Species, Common Name, Notes, Maximum Depth. Lists plants like Agrostis exarata, Carex stipata, Eleocharis palustris, etc.

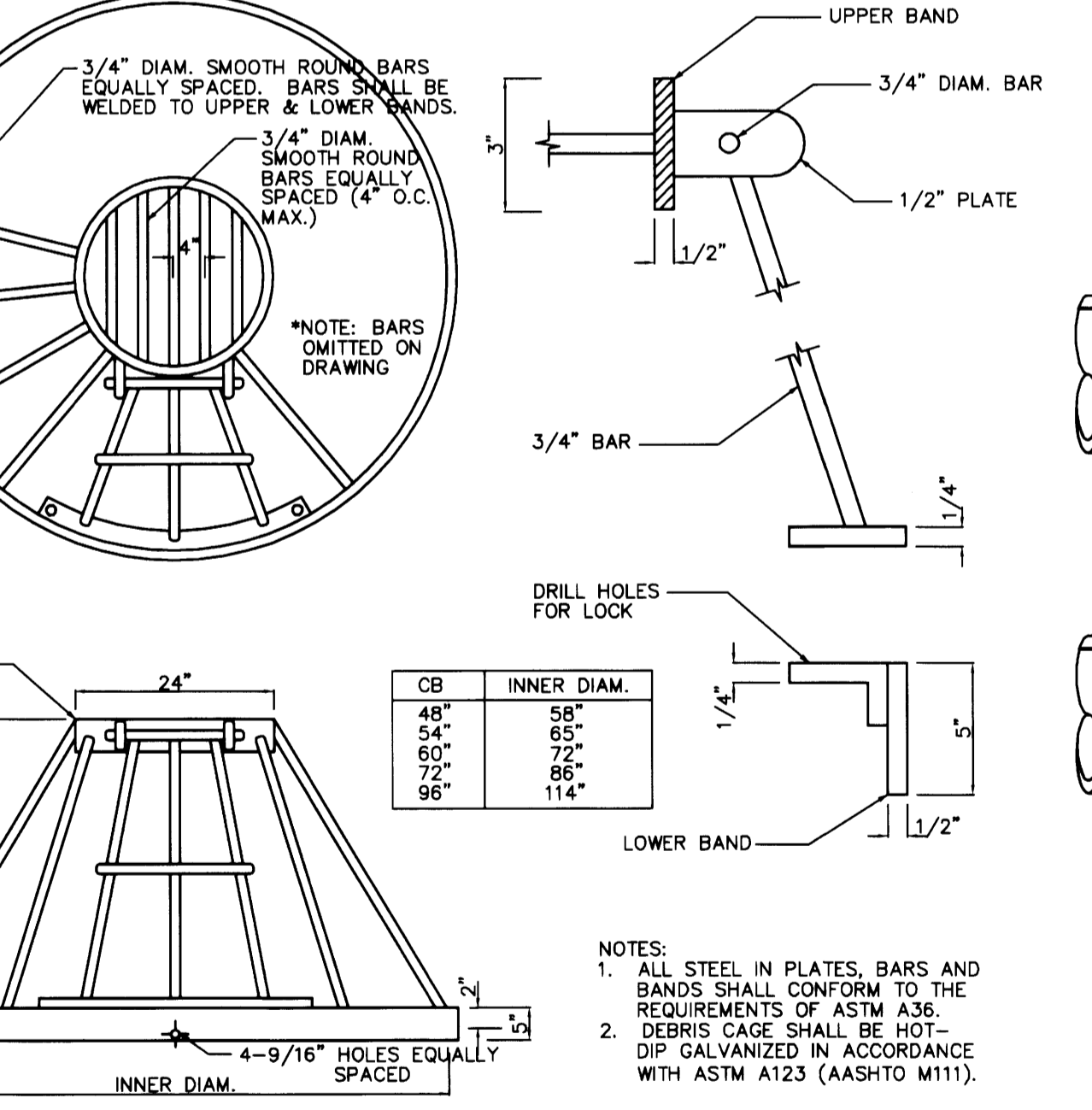


CLEANOUT/SHEAR GATE ALTERNATES ARE ACCEPTABLE PROVIDED MATERIAL SPECIFICATIONS ARE MET AND FLANGE BOLT PATTERN MATCHES.

FLOW RESTRICTOR/ OIL POLLUTION CONTROL - T SHEAR GATE DETAIL



FLOW RESTRICTOR/ OIL POLLUTION CONTROL - T RESTRICTOR



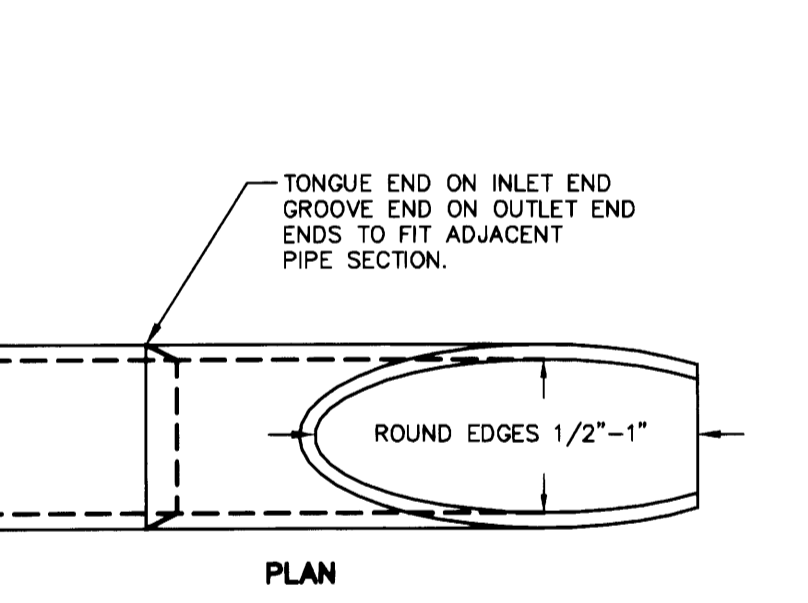
BIRDCAGE DETAIL N.T.S.

POND SIDESLOPE SEEDING NOTE:

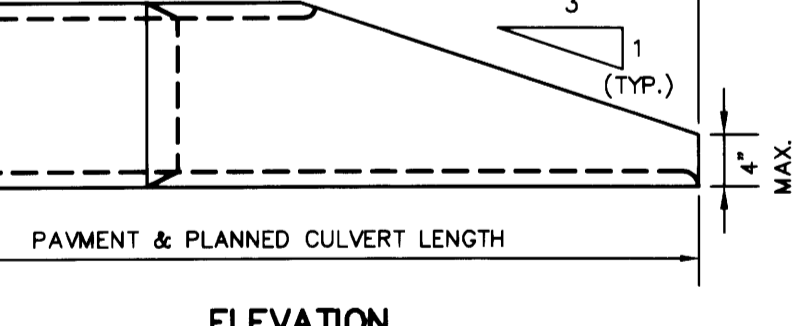
POND TRACT AND SIDE SLOPES WITHIN POND ABOVE ELEVATION 369.25 SHALL BE PLANTED WITH THE FOLLOWING MIX: DWARF TALL FESCUE 40%, DWARF PERENNIAL RYE 30%, RED FESCUE 25%, COLONIAL BENTGRASS 5% AT A RATE OF 2.5-3 POUNDS PER 1000 SQUARE FEET.

THE FOLLOWING GUIDELINES SHALL BE USED FOR RIPRAP INLET-OUTLET PROTECTION:

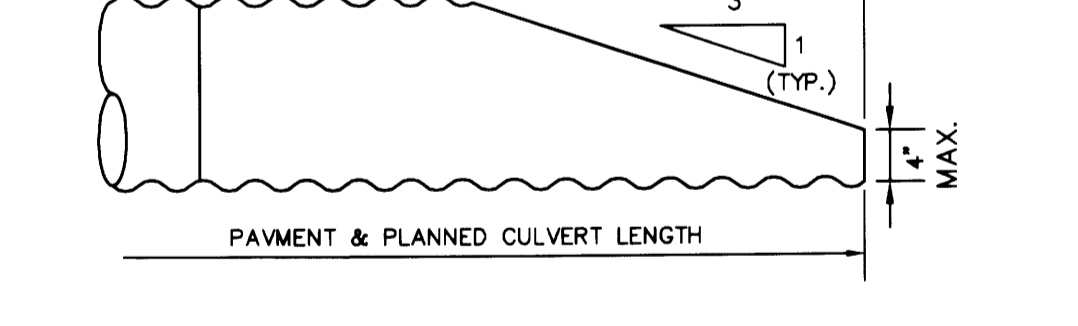
IF THE DISCHARGE VELOCITY AT THE OUTLET IS LESS THAN 5 FPS (PIPE SLOPE LESS THAN 1 PERCENT), USE 2-INCH TO 8-INCH RIPRAP. MINIMUM THICKNESS IS 1-FOOT. MINIMUM PAD DIMENSIONS SHALL BE 3'x6'



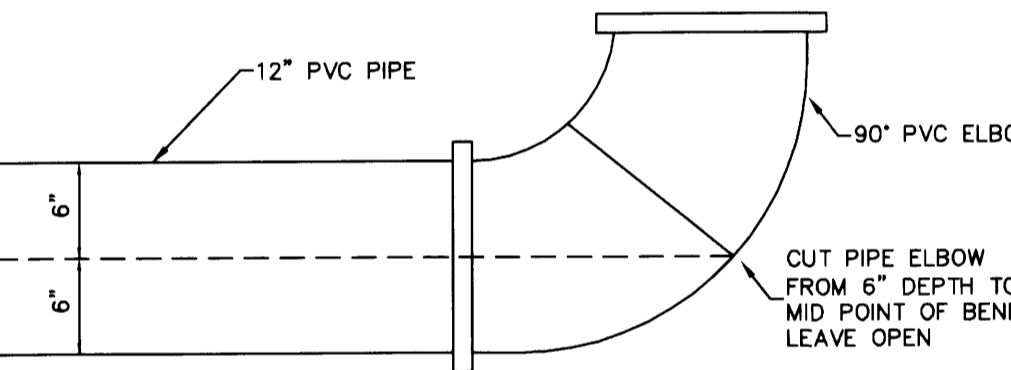
BEVELED END PIPE SECTION N.T.S.



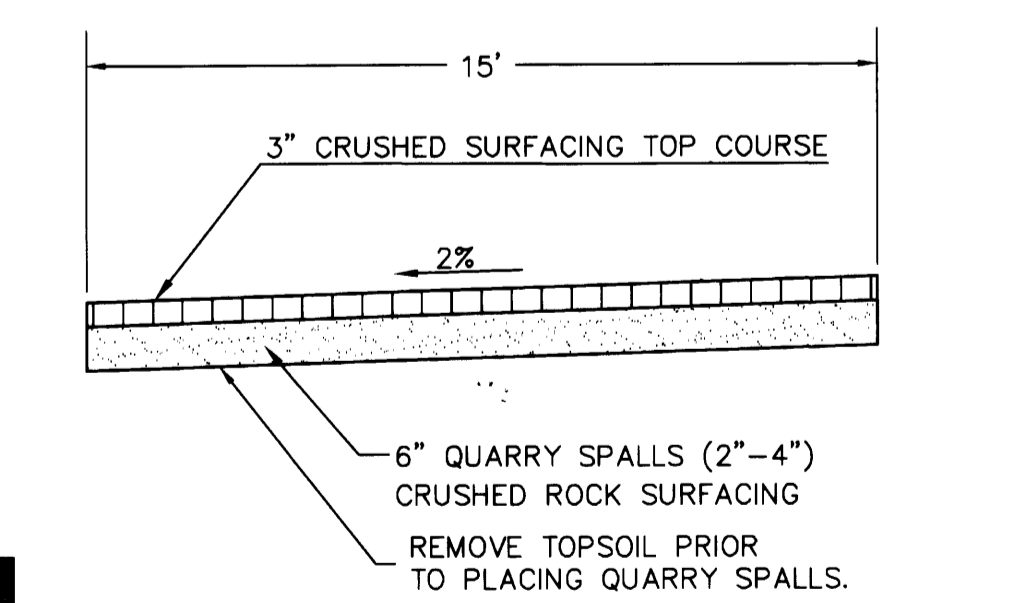
CONCRETE PIPE



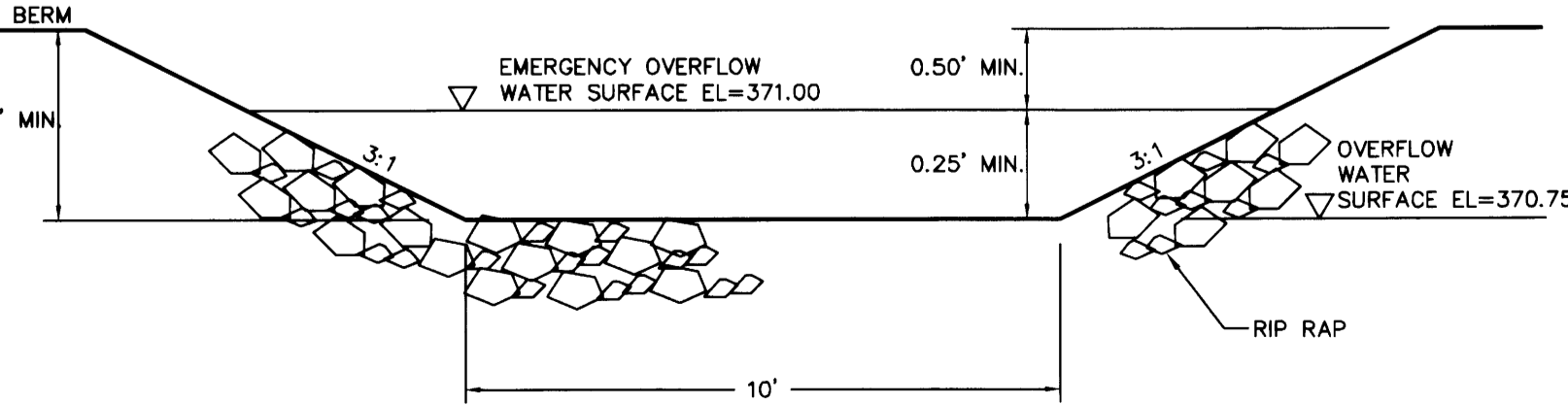
METAL & PLASTIC PIPE



POND OUTFALL PIPE END N.T.S.



POND ACCESS ROAD N.T.S.



EMERGENCY OVERFLOW SPILLWAY N.T.S.

NOTES:

- REFER TO CITY OF ARLINGTON PUBLIC WORKS CONSTRUCTION STANDARDS FOR DETAIL: 1 SHT SD-2 - STANDARD CATCH BASIN TYPE I, 2 SHT SD-4 - CATCH BASIN TYPE II, 3 SHT SD-5 - STANDARD GRATE CATCH BASIN OR INLET, 4 SHT SD-7 - TYPICAL FRAME AND GRATE INSTALLATION, 5 SHT SD-9 - TYPICAL FLOW RESTRICTOR INSTALLATION, 6 SHT SD-10 - RESTRICTOR UNIT DETAIL, 7 SHT SD-11 - LIFT GATE ASSEMBLY AND SECONDARY ORIFICE DETAIL, 8 SHT SD-12 - TRASH RACK DETAIL, 9 SHT SD-13 - OVERFLOW GRATE/ TRASH RACK

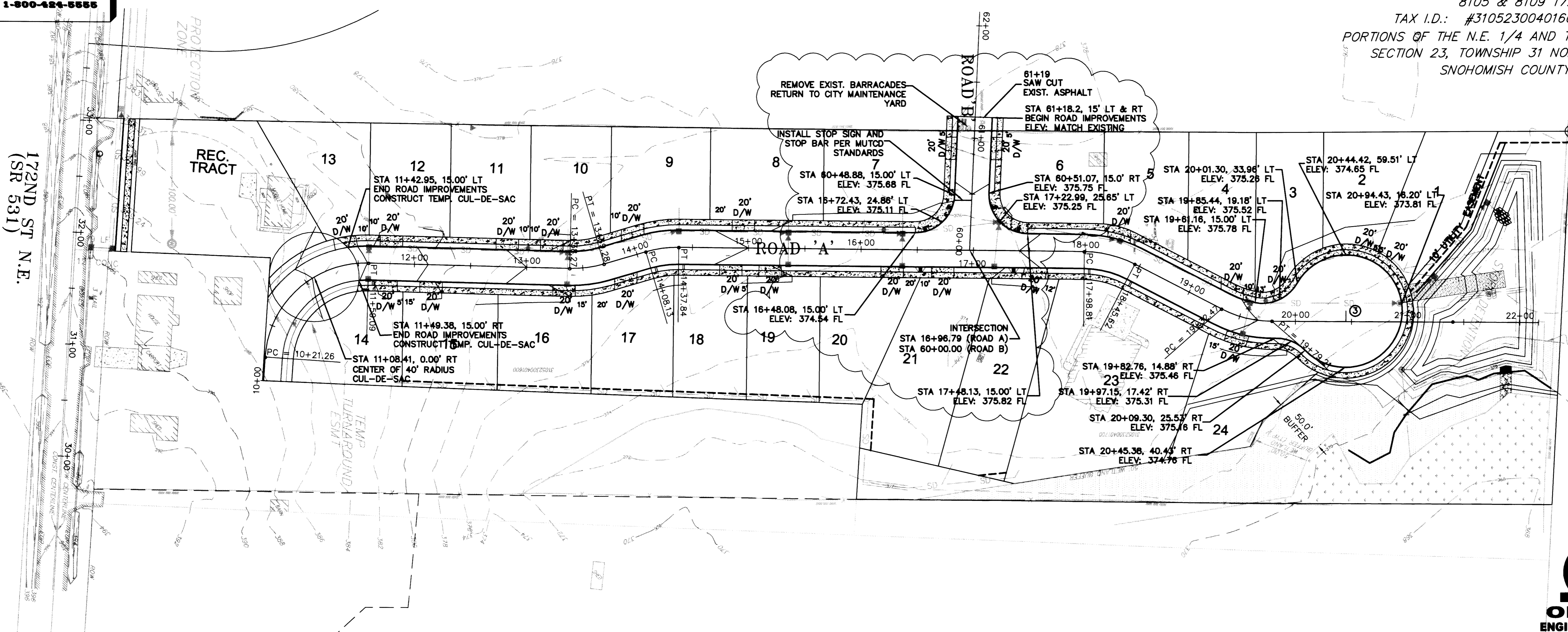
CALL 48 HOURS BEFORE YOU DIG 1-800-424-5555

CALL 48 HOURS BEFORE YOU DIG
1-800-424-5555

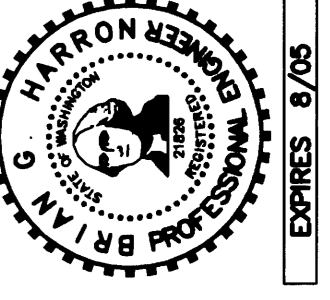
FILE NUMBER: C-04-014-LP
DOGWOOD MEADOWS
8105 & 8109 172ND ST. N.E.
TAX I.D.: #31052300401600 & 31052300401700
PORTIONS OF THE N.E. 1/4 AND THE S.E. 1/4 OF THE S.E. 1/4 SECTION 23, TOWNSHIP 31 NORTH, RANGE 5 EAST, W.M. SNOHOMISH COUNTY, WASHINGTON

172ND ST N.E.
(SR 531)

REC TRACT



AS-BUILT DRAWING - BY OMEGA ENGINEERING



ROAD & GRADING
PLAN & PROFILE

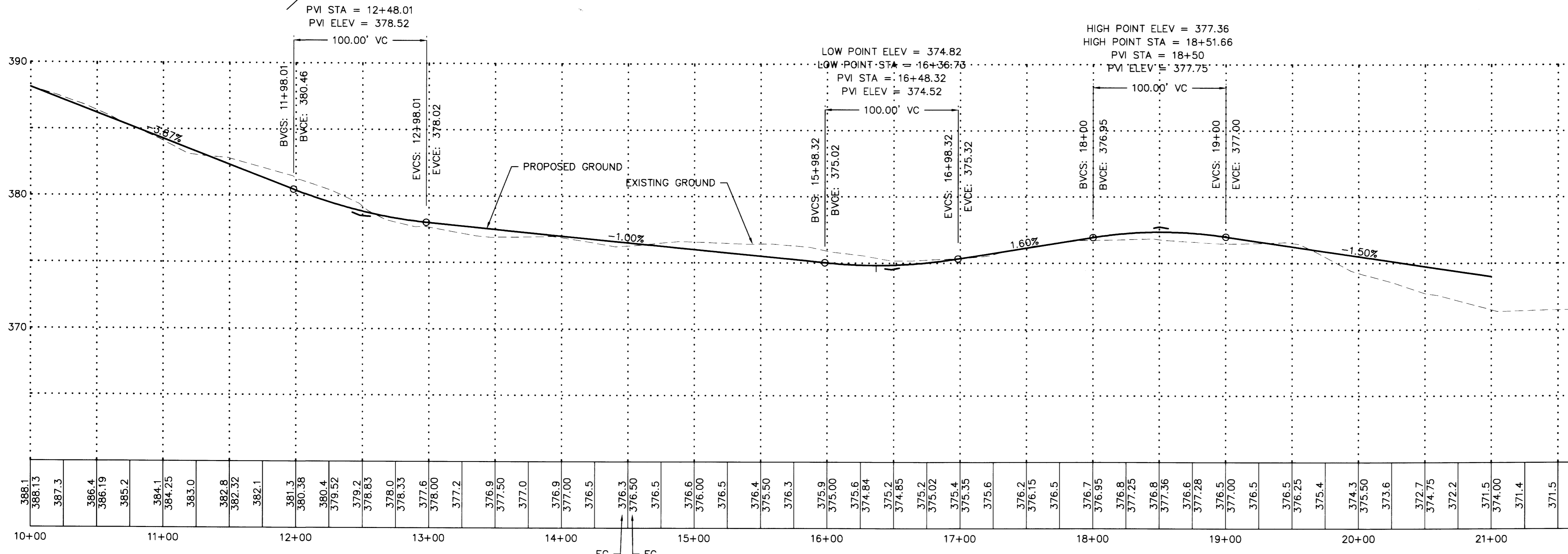


Patrick Harron & Associates, LLC
Engineering Planning
14900 Interurban Ave. S.
Suite Number 279
Seattle, WA 98168
T 206.674.4659
F 206.674.4660



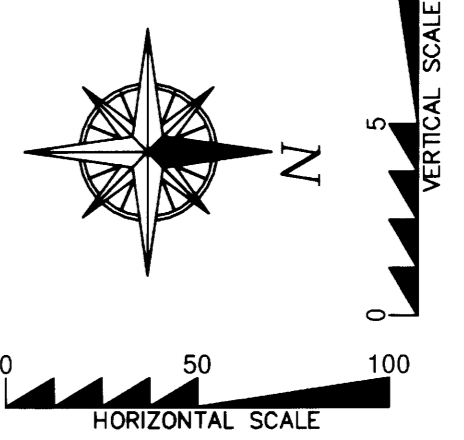
2210 HEWITT AVENUE
SUITE NUMBER 204
EVERETT, WA 98201
T 425.387.3820
F 425.259.1958

OMEGA ENGINEERING, INC. REVISED THE APPROVED CIVIL PLANS PREPARED BY PATRICK HARRON AND ASSOCIATES DUE TO ROAD ALIGNMENT AND ELEVATION CHANGES AT THE ROAD CONNECTION TO THE PLAT TO THE WEST. THE REVISIONS PREPARED BY OMEGA ENGINEERING ARE CLOUDED.



CITY OF ARLINGTON
THIS SHEET HAS BEEN APPROVED PER CONDITIONS ON THE COVER SHEET.

CONSTRUCTION	AS-BUILT ACKNOWLEDGEMENT
By: _____ City Engineer	By: <i>[Signature]</i> City Engineer
Date: ___/___/___	Date: 10/21/2005



NOTES:

REFER TO CITY OF ARLINGTON PUBLIC WORKS CONSTRUCTION STANDARDS FOR DETAIL:

- ① SHT R-1 - TYPICAL ROADWAY SECTION - LOCAL ACCESS
- ② SHT R-2 - TYPICAL ROADWAY SECTION - ARTERIALS & INDUSTRIAL ACCESS
- ③ SHT R-3 - TYPICAL CUL-DE-SAC
- ④ SHT R-4 - CEMENT CONCRETE CURB & GUTTER
- ⑤ SHT R-5 - CEMENT CONCRETE SIDEWALK AT CORNERS
- ⑥ SHT R-6 - CEMENT CONCRETE SIDEWALK
- ⑦ SHT R-8 - CEMENT CONCRETE DRIVEWAY - TYPE II
- ⑧ SHT R-10 - TYPE B CURB RAMP
- ⑨ SHT R-14 - POST MOUNTED STREET NAME SIGNS

ROAD A
SCALE: 1" = 50' HORIZ.
= 5' VERT.

DOGWOOD MEADOWS
SNOHOMISH COUNTY, WASHINGTON
PORTION OF SECTION 23, TOWNSHIP 31 NORTH, RANGE 5 EAST, W.M. DOGWOOD MEADOWS

PL: _____
CADD FILE: CIVIL BASE
DATE: 12.01.04
SCALE: 1" = 50'
DRAWING NO: **C4_13**

CALL 48 HOURS BEFORE YOU DIG
1-800-424-5555

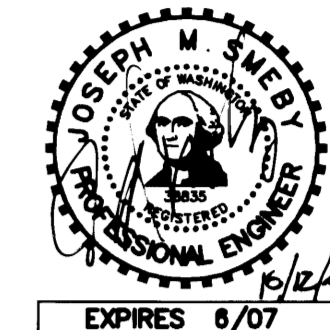
FILE NUMBER: C-04-014-LP
DOGWOOD MEADOWS

8105 & 8109 172ND ST. N.E.
TAX I.D.: #31052300401600 & 31052300401700
PORTIONS OF THE N.E. 1/4 AND THE S.E. 1/4 OF THE S.E. 1/4
SECTION 23, TOWNSHIP 31 NORTH, RANGE 5 EAST, W.M.
SNOHOMISH COUNTY, WASHINGTON

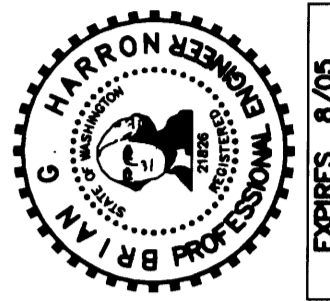


2210 HEWITT AVENUE
SUITE NUMBER 204
EVERETT, WA 98201
t 425.387.3820
f 425.259.1958

OMEGA ENGINEERING, INC.
OMEGA ENGINEERING, INC. REVISED THE APPROVED CIVIL PLANS PREPARED BY PATRICK HARRON AND ASSOCIATES DUE TO ROAD ALIGNMENT AND ELEVATION CHANGES AT THE ROAD CONNECTION TO THE PLAT TO THE WEST. THE REVISIONS PREPARED BY OMEGA ENGINEERING ARE CLOUDED.



AS-BUILT DRAWING - BY OMEGA ENGINEERING



ROAD & GRADING
PLAN &
PROFILE

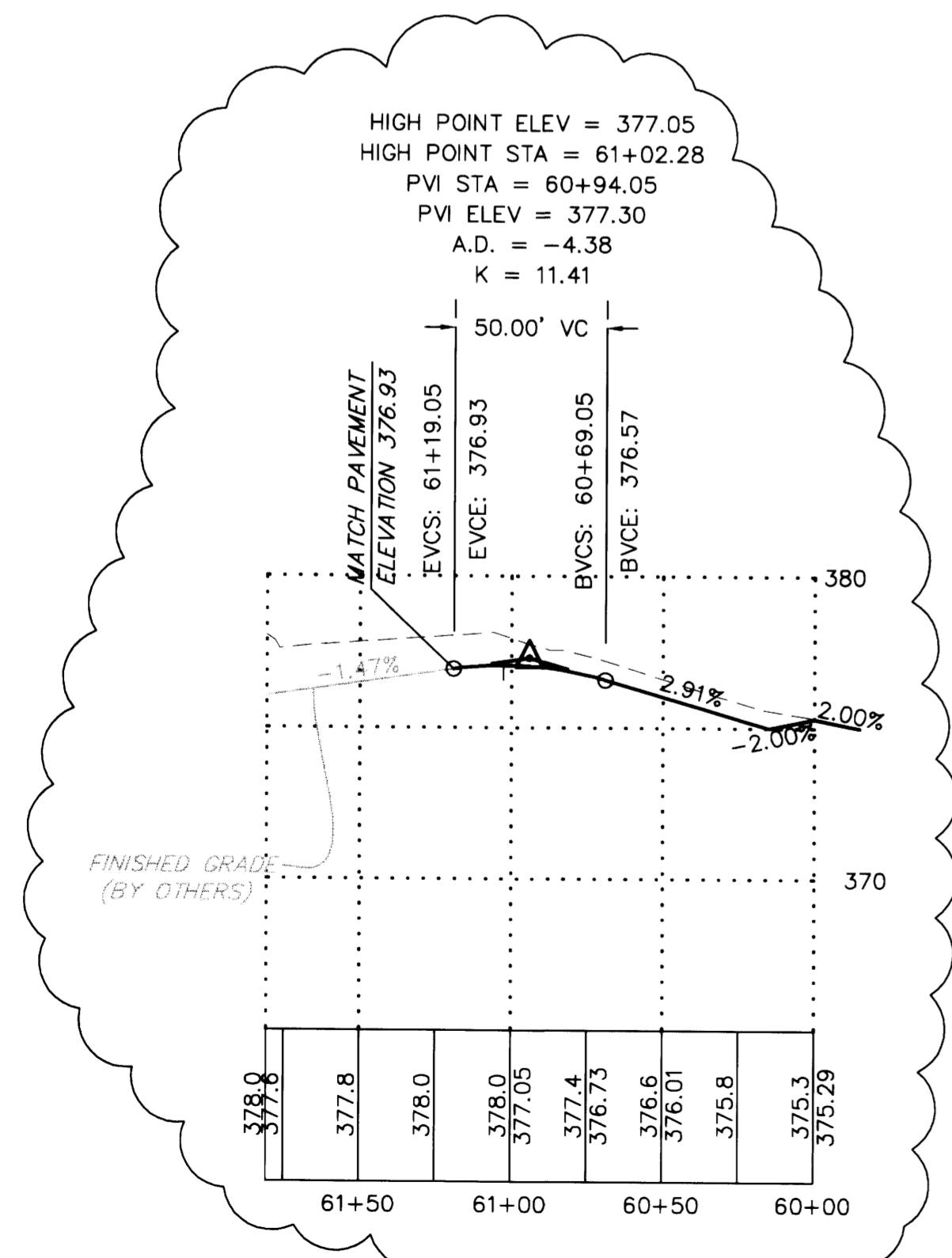
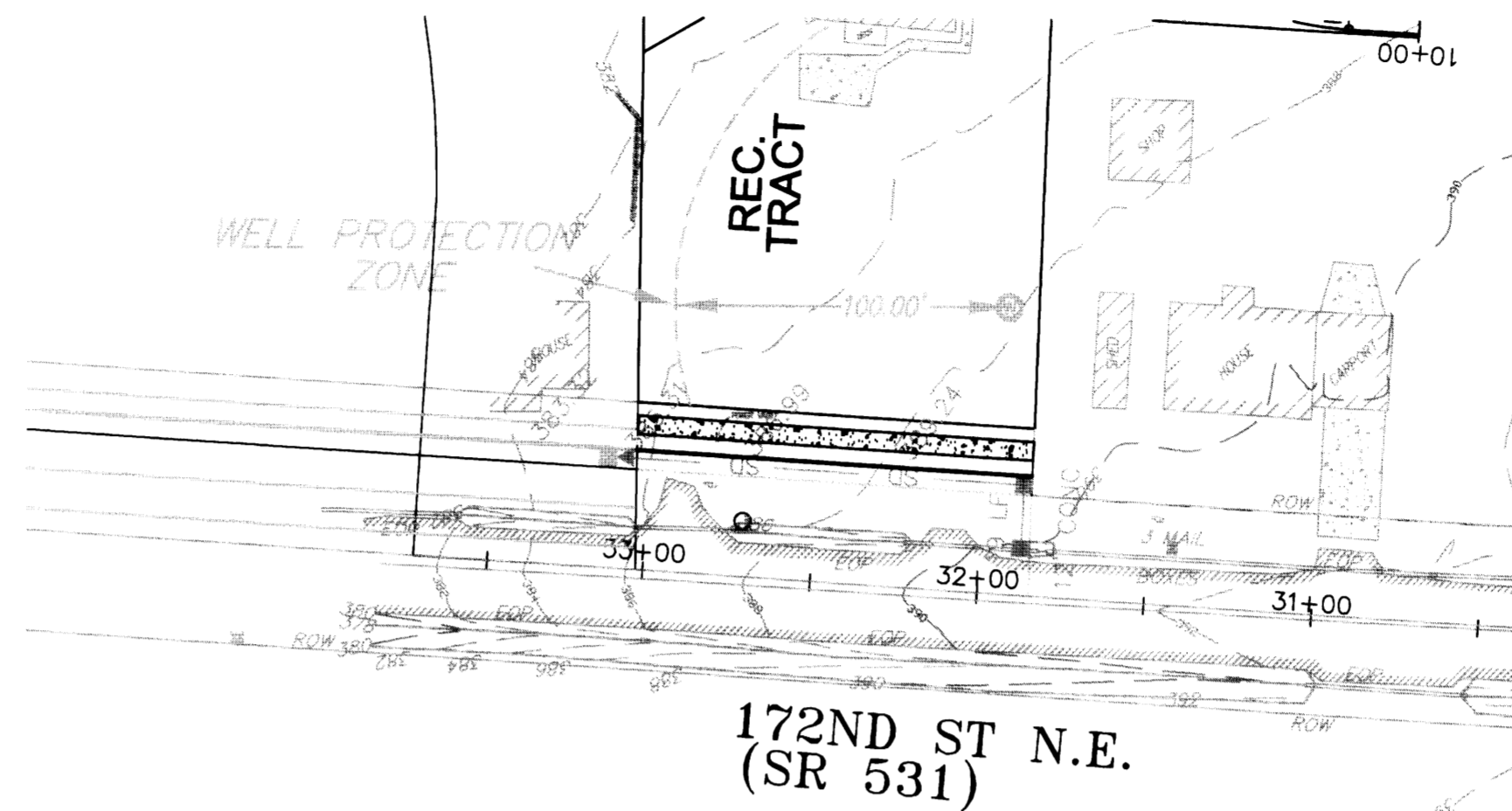
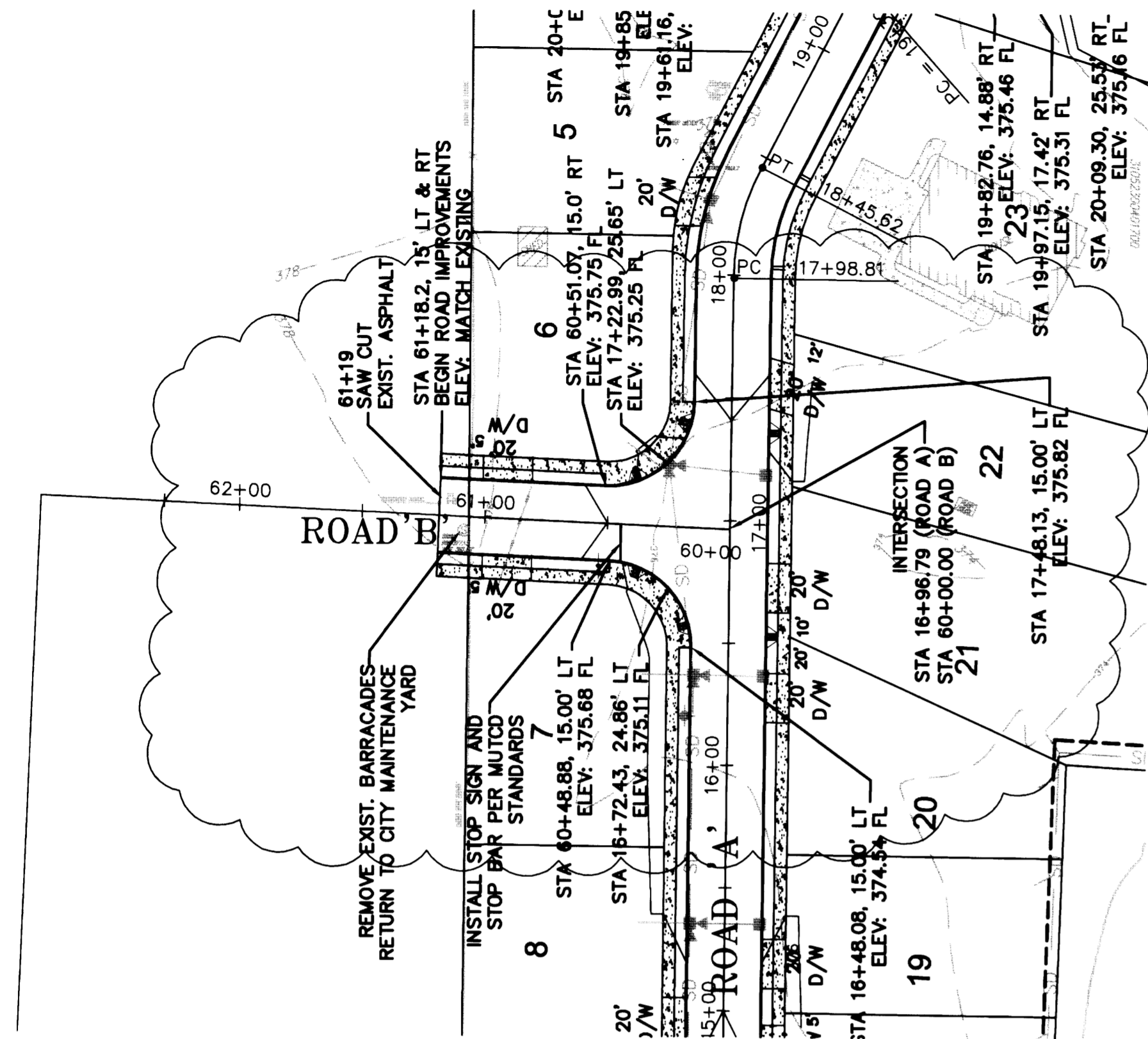


Patrick Harron & Associates, LLC
Engineering Planning
14900 Interurban Ave. S.
Suite Number 279
Seattle, WA 98168
T 206.674.4659
F 206.674.4680

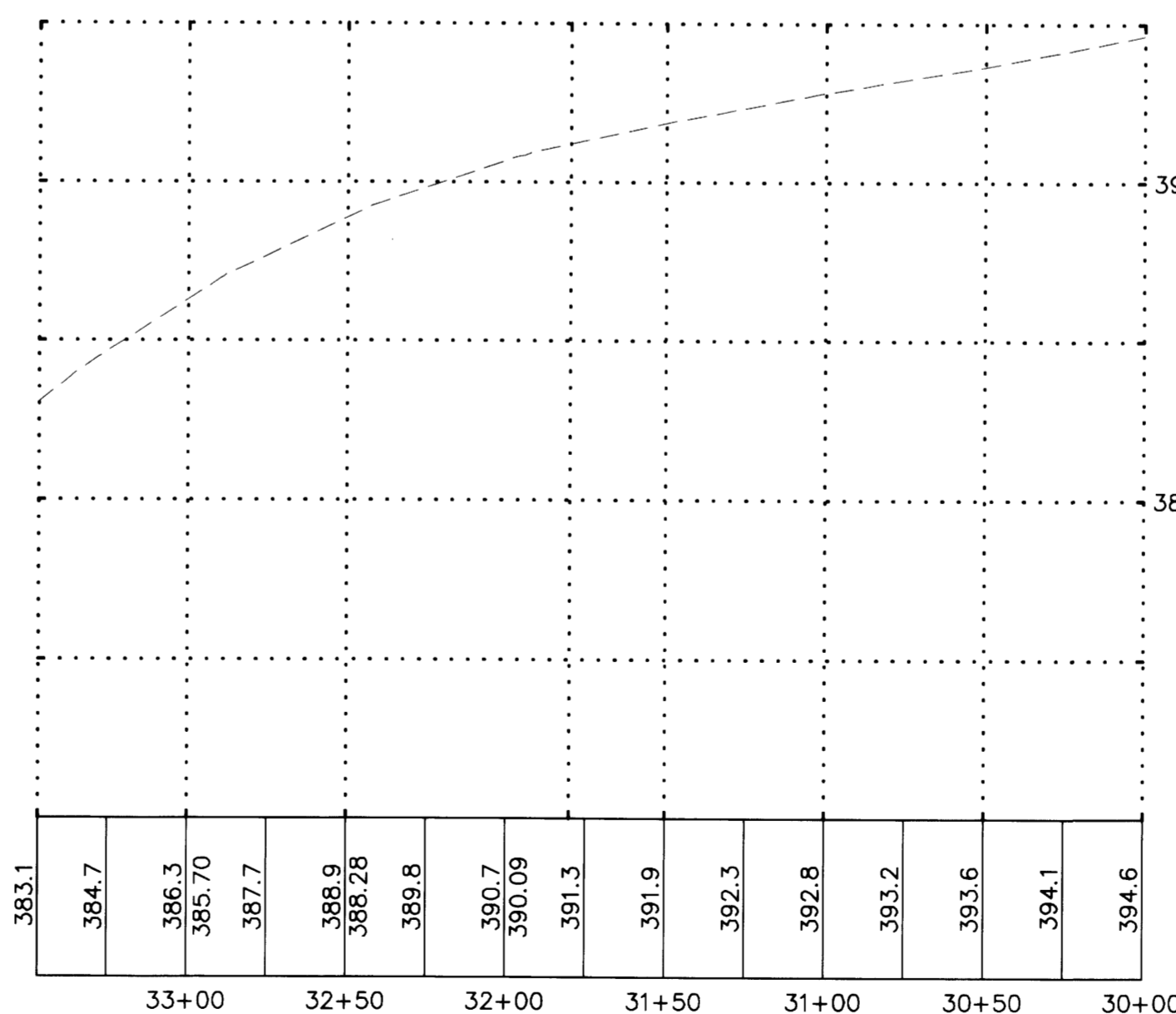
PROJ. NO. 04114
DWN. BY: NO
APP. BY: BQH

DOGWOOD MEADOWS
SNOHOMISH COUNTY, WASHINGTON
PORTION OF SECTION 23, TOWNSHIP 31 NORTH, RANGE 5 EAST, W.M.
DOGWOOD MEADOWS

CADD FILE: CIVIL BASE
DATE: 12.01.04
SCALE: 1" = 50'
DRAWING NO.: C5_13



ROAD B
SCALE: 1" = 50' HORIZ.
5" = 5' VERT.



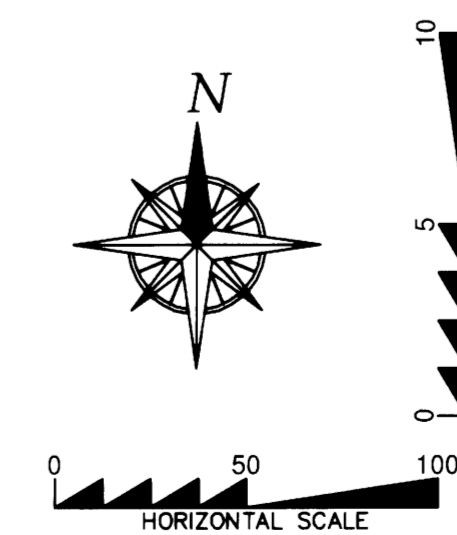
172ND ST NE
SCALE: 1" = 50' HORIZ.
5" = 5' VERT.

NOTES:

REFER TO CITY OF ARLINGTON PUBLIC WORKS CONSTRUCTION STANDARDS FOR DETAIL:

- ① SHT R-1 - TYPICAL ROADWAY SECTION - LOCAL ACCESS
- ② SHT R-2 - TYPICAL ROADWAY SECTION - ARTERIALS & INDUSTRIAL ACCESS
- ③ SHT R-3 - TYPICAL CUL-DE-SAC
- ④ SHT R-4 - CEMENT CONCRETE CURB & GUTTER
- ⑤ SHT R-5 - CEMENT CONCRETE SIDEWALK AT CORNERS
- ⑥ SHT R-6 - CEMENT CONCRETE SIDEWALK
- ⑦ SHT R-8 - CEMENT CONCRETE DRIVEWAY - TYPE II
- ⑧ SHT R-10 - TYPE B CURB RAMP
- ⑨ SHT R-14 - POST MOUNTED STREET NAME SIGNS

CITY OF ARLINGTON	
THIS SHEET HAS BEEN APPROVED PER CONDITIONS ON THE COVER SHEET.	
CONSTRUCTION By: _____ City Engineer Date: ___/___/___	AS-BUILT ACKNOWLEDGEMENT By: <i>harron</i> City Engineer Date: <u>10/21/2005</u>

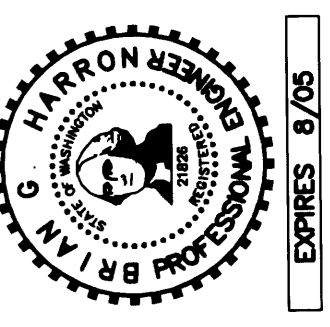
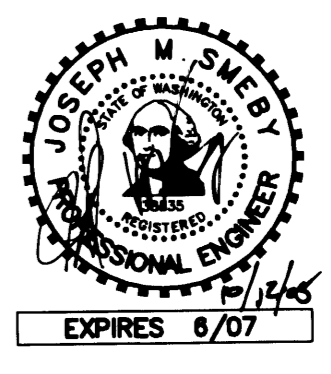


CALL 48 HOURS BEFORE YOU DIG
1-800-424-5555

FILE NUMBER: C-04-014-LP
DOGWOOD MEADOWS
8105 & 8109 172ND ST. N.E.
TAX I.D.: #31052300401600 & 31052300401700
PORTIONS OF THE N.E. 1/4 AND THE S.E. 1/4 OF THE S.E. 1/4
SECTION 23, TOWNSHIP 31 NORTH, RANGE 5 EAST, W.M.
SNOHOMISH COUNTY, WASHINGTON

OMEGA ENGINEERING, INC.
2210 HEWITT AVENUE
SUITE NUMBER 204
EVERETT, WA 98201
1 425.387.3820
1 425.259.1958

OMEGA ENGINEERING, INC. REVISED THE APPROVED CIVIL PLANS PREPARED BY PATRICK HARRON AND ASSOCIATES DUE TO ROAD ALIGNMENT AND ELEVATION CHANGES AT THE ROAD CONNECTION TO THE PLAT TO THE WEST. THE REVISIONS PREPARED BY OMEGA ENGINEERING ARE CLOUDED.



AS-BUILT DRAWING - BY OMEGA ENGINEERING

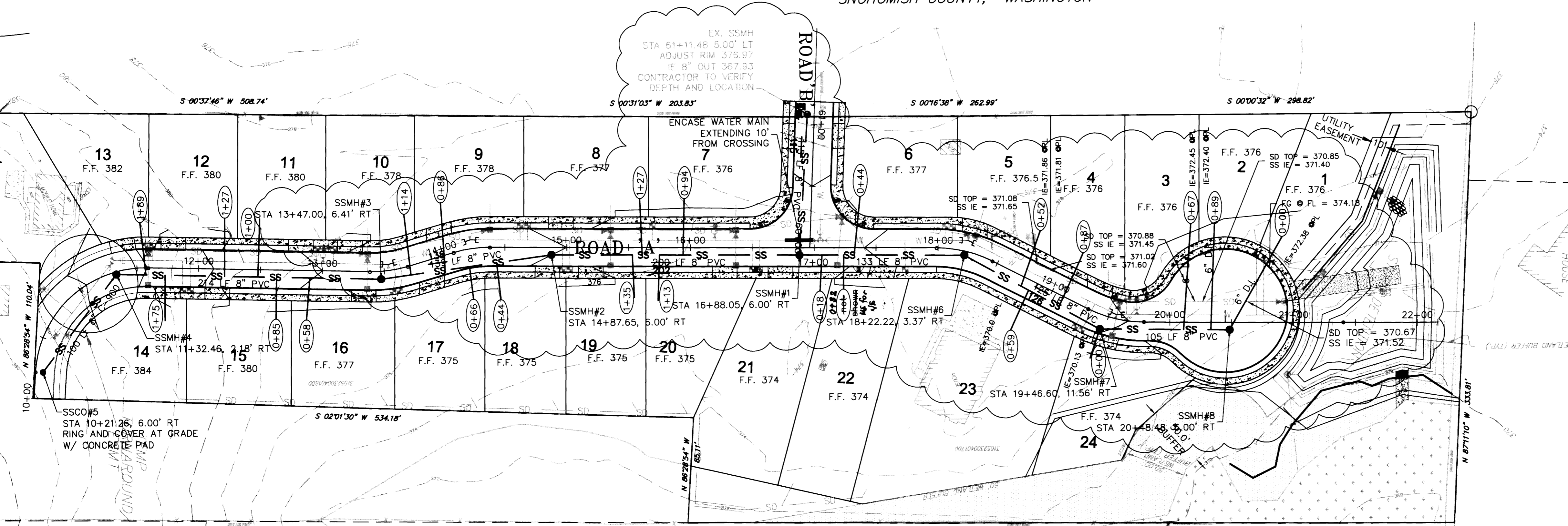
SANITARY PLAN & PROFILE

PATRICK HARRON & ASSOCIATES, LLC
Patrick Harron & Associates, LLC
Engineering Planning
14800 Interurban Ave. S.
Suite Number 279
Seattle, WA 98168
T 206.674.4659
F 206.674.4660

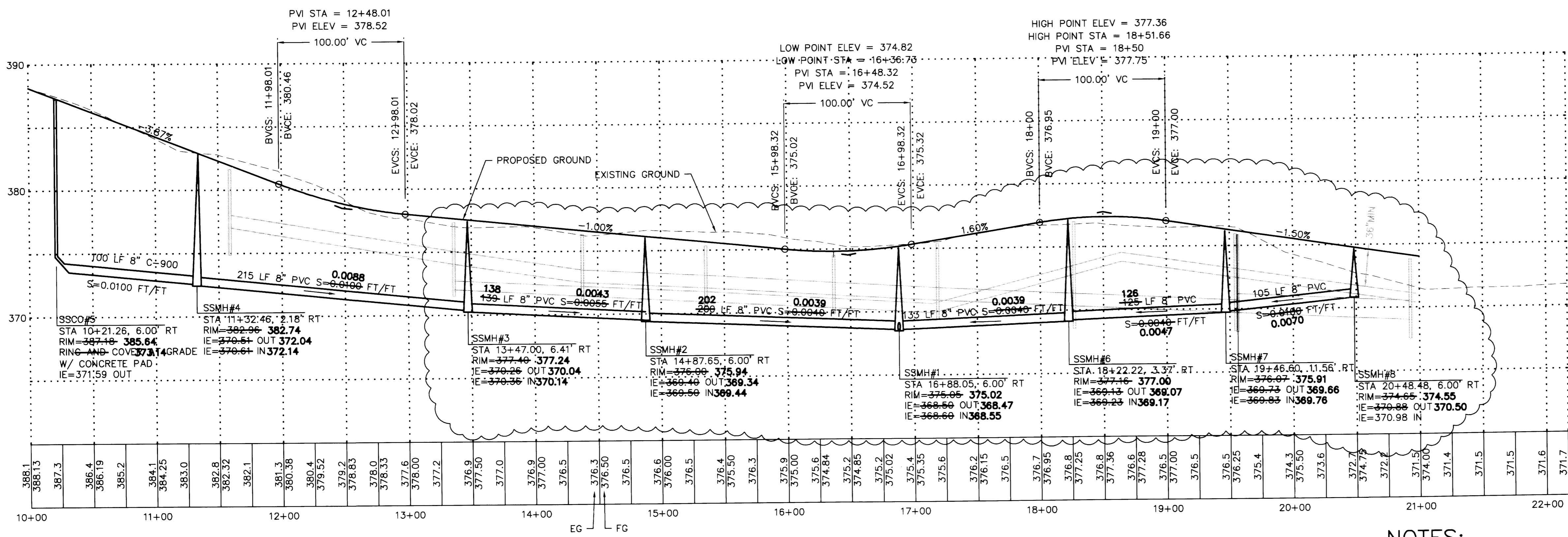
PROJ. NO.	04114	DATE BY:	JMS
DATE BY:	NO	CHK BY:	BGH
DATE REV.		APP BY:	

DOGWOOD MEADOWS
SNOHOMISH COUNTY, WASHINGTON
PORTION OF SECTION 23, TOWNSHIP 31 NORTH, RANGE 5 EAST, W.M.
DOGWOOD MEADOWS

PLAT:	
BASE FILE:	CIVIL BASE
DATE:	12.01.04
SCALE:	1" = 50'
DRAWING NO.:	C9_13

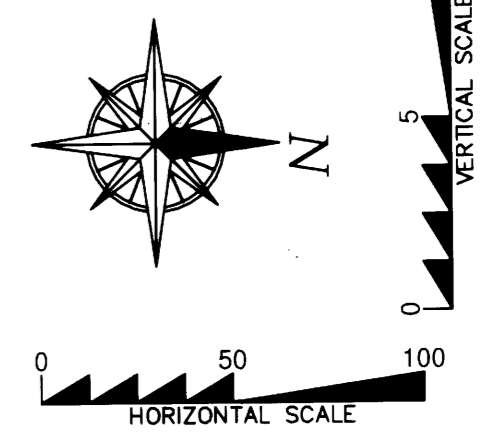


SIDE SEWER NOTE:
LOCATIONS OF SIDE SEWER WERE SURVEYED AT THE MARKED ENDS ON EACH INDIVIDUAL LOT. ACTUAL LOCATION OF CONNECTION TO MAIN IS APPROXIMATE.



CITY OF ARLINGTON
THIS SHEET HAS BEEN APPROVED PER CONDITIONS ON THE COVER SHEET.

CONSTRUCTION	AS-BUILT ACKNOWLEDGEMENT
By: _____ City Engineer	By: <i>[Signature]</i> City Engineer
Date: / /	Date: 10/21/2005



- NOTES:**
REFER TO CITY OF ARLINGTON PUBLIC WORKS CONSTRUCTION STANDARDS FOR DETAIL:
- ① SHT S-1 = PRECAST MANHOLE
 - ② SHT S-3 = STANDARD FRAME AND COVER
 - ③ SHT S-5 = MANHOLE STEPS AND LADDER
 - ④ SHT S-6 = TYPICAL TRENCH SECTION PVC PIPE
 - ⑤ SHT S-8 = SERVICE CONNECTION ELEVATION
 - ⑥ SHT S-11 = CLEANOUT

ROAD A
SCALE: 1" = 50' HORIZ.
 " = 5' VERT.

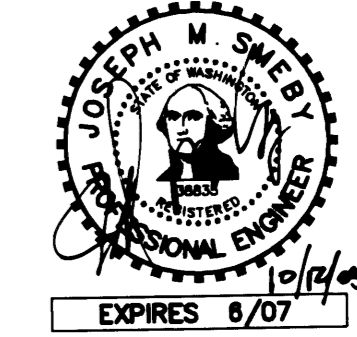
CALL 48 HOURS BEFORE YOU DIG 1-800-424-5555

FILE NUMBER: C-04-014-LP
 DOGWOOD MEADOWS
 8105 & 8109 172ND ST. N.E.
 TAX I.D.: #31052300401600 & 31052300401700
 PORTIONS OF THE N.E. 1/4 AND THE S.E. 1/4 OF THE S.E. 1/4
 SECTION 23, TOWNSHIP 31 NORTH, RANGE 5 EAST, W.M.
 SNOHOMISH COUNTY, WASHINGTON



2210 HEWITT AVENUE
 SUITE NUMBER 204
 EVERETT, WA 98201
 t 425.387.3820
 f 425.259.1958

OMEGA ENGINEERING, INC. REVISED THE APPROVED CIVIL PLANS PREPARED BY PATRICK HARRON AND ASSOCIATES DUE TO ROAD ALIGNMENT AND ELEVATION CHANGES AT THE ROAD CONNECTION TO THE PLAT TO THE WEST. THE REVISIONS PREPARED BY OMEGA ENGINEERING ARE CLOUDED.



AS-BUILT DRAWING - BY OMEGA ENGINEERING



SANITARY PLAN & PROFILE



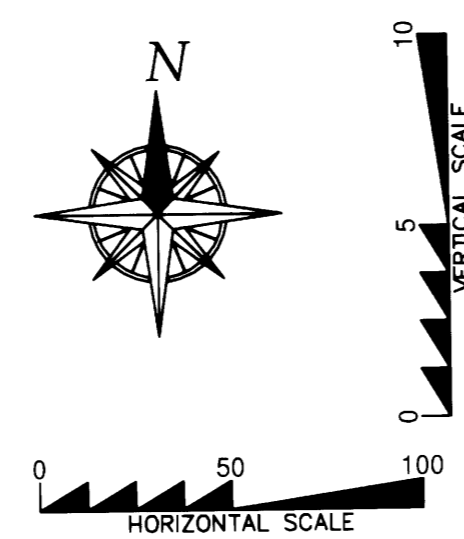
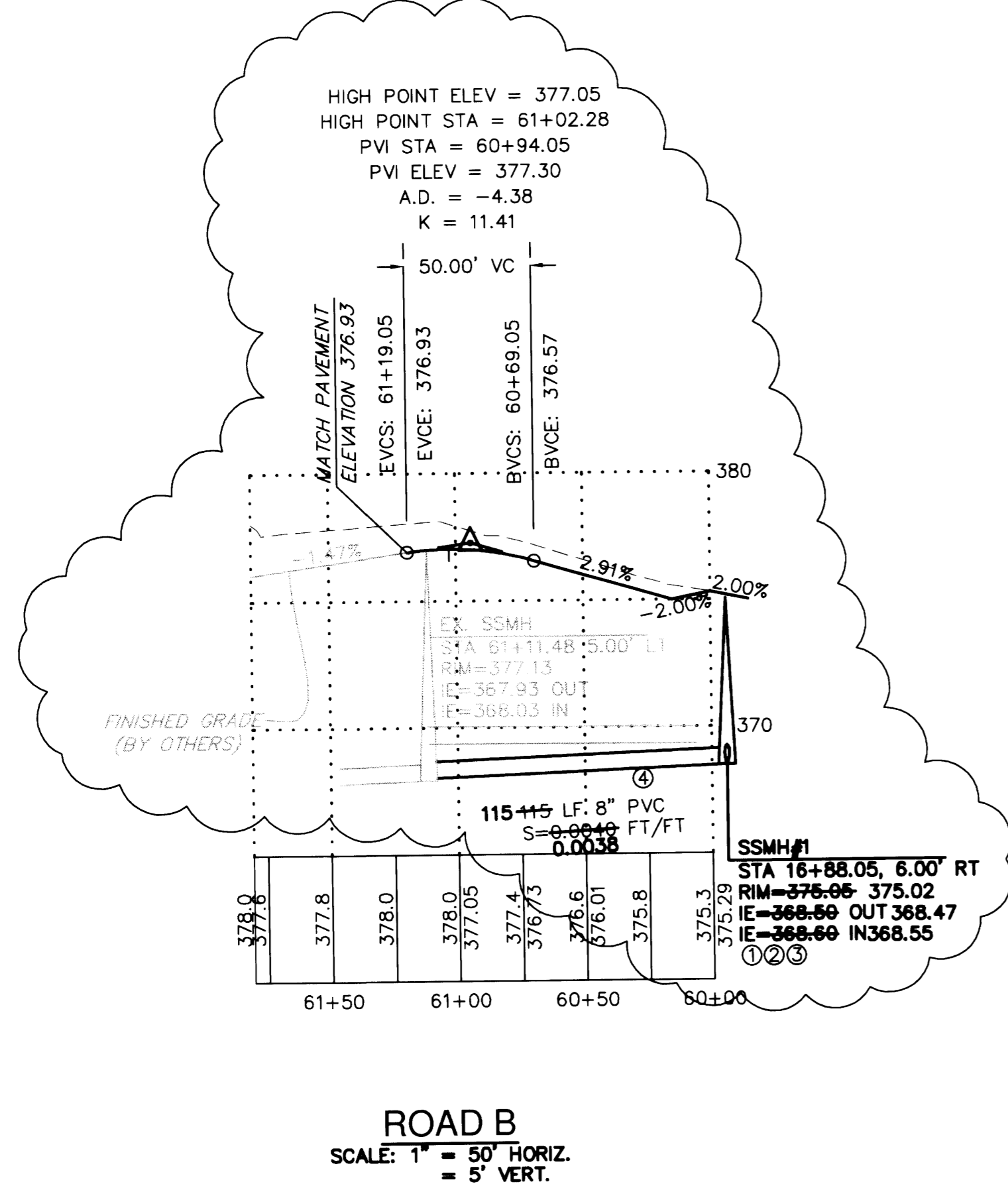
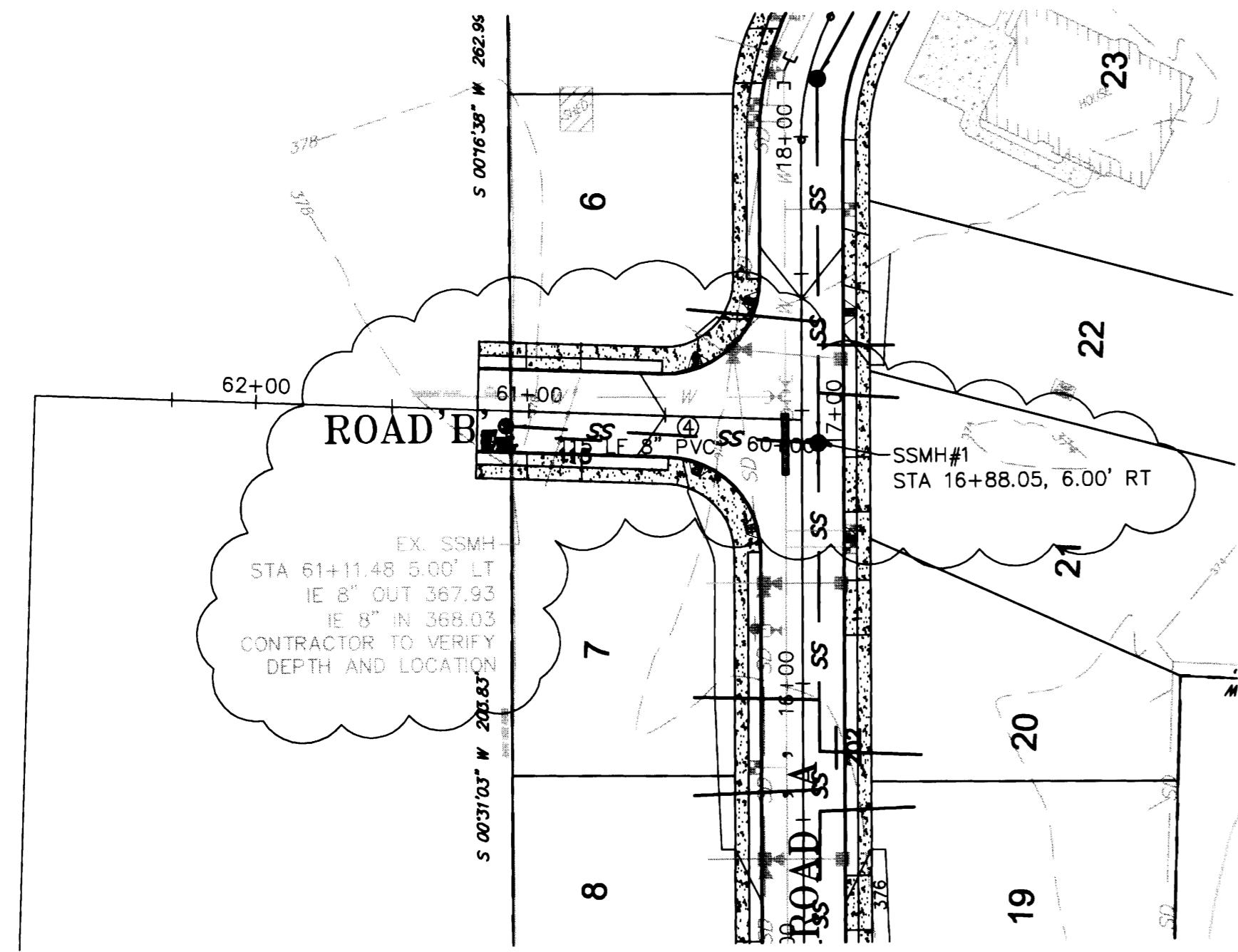
Patrick Harron & Associates, LLC
 Engineering Planning
 14900 Interurban Ave. S.
 Suite Number 279
 Seattle, WA 98168
 T 206.674.4859
 F 206.674.4660

PROJ. NO. 04114	DRN. BY. JMS
DWN. BY. NO	CHK. BY. BGH
QA/RV. BY.	APP. BY.

DOGWOOD MEADOWS
 SNOHOMISH COUNTY, WASHINGTON
 PORTION OF SECTION 23, TOWNSHIP 31 NORTH, RANGE 5 EAST, W.M.
 DOGWOOD MEADOWS

CITY OF ARLINGTON	
THIS SHEET HAS BEEN APPROVED PER CONDITIONS ON THE COVER SHEET.	
CONSTRUCTION	AS-BUILT ACKNOWLEDGEMENT
By: _____ City Engineer	By: <u>Joe Sel</u> City Engineer
Date: ___/___/___	Date: <u>10/21/2005</u>

FILE NO. CIVIL BASE
DATE 12.01.04
SCALE 1" = 50'
DRAWING NO. C10_13



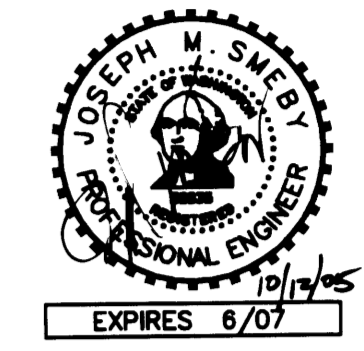
- SEWER SYSTEM NOTES:
- PVC PIPE AND FITTINGS SHALL BE INTEGRAL WALL AND SPIGOT, RUBBER GASKET JOINT, PVC CONFORMING TO ASTM 3034 SDR 35.
 - ALL PVC SEWER PIPE AND FITTINGS MANUFACTURE AND INSTALLATION SHALL BE IN ACCORDANCE WITH THE ASTM RECOMMENDED SPECIFICATIONS D3034-73, CURRENT REVISIONS, AND ALL INSTALLATION SHALL BE IN STRICT COMPLIANCE WITH THE MANUFACTURER'S DIRECTIONS. ALL PIPE SHALL BE CLEARLY MARKED WITH THE DATE OF MANUFACTURE. THERE SHALL BE NO REDUCTION IN PIPE WALL THICKNESS AT THE BELL AS A RESULT OF BELL FORMATION. ALL PIPE SHALL BE PROVIDED WITH A REFERENCE MARK FOR PROPER SPIGOT INSERTION. JOINT GASKETS SHALL BE FABRICATED FROM A COMPOUND OF WHICH THE BASIC POLYMER SHALL BE A SYNTHETIC RUBBER CONSISTING OF STYRENE, BUTADIENE, POLYISOPRENE, OR ANY COMBINATION THEREOF AND SHALL MEET THE REQUIREMENTS OF ASTM F477, LATEST REVISIONS.
 - CONNECTIONS FOR SIDE SEWER STUBS SHALL BE 6 INCHES INSIDE DIAMETER TEE FITTINGS FABRICATED IN THE MANUFACTURER'S PLANT. WYE BRANCHES SHALL BE USED WHERE THE SEWER MAIN SIZE IS LESS THAN 8" INSIDE DIAMETER. NO FIELD CUT-IN TEES OR WYES WILL BE ALLOWED UNDER THESE SPECIFICATIONS WITHOUT WRITTEN APPROVAL BY THE CITY.
 - MANHOLES SHALL BE OF THE OFFSET TYPE AND SHALL BE PRECAST CONCRETE SECTIONS WITH EITHER A CAST IN PLACE BASE OR A PRECAST BASE MADE FROM A 3,000 PSI STRUCTURAL CONCRETE. JOINTS BETWEEN PRECAST WALL SECTIONS SHALL BE CONFINED O RING OR AS OTHERWISE SPECIFIED. THEY SHALL BE CONSTRUCTED IN FULL COMPLIANCE WITH ASTM C478 AND THE DETAILS SHOWN ON STANDARD SPECIFICATIONS PRECAST MANHOLE AND AS FURTHER SPECIFIED HEREIN.
 - MANHOLE SECTIONS SHALL BE PLACED AND ALIGNED SO AS TO PROVIDE VERTICAL SIDES AND VERTICAL ALIGNMENT OF THE LADDER STEPS. THE COMPLETED MANHOLE SHALL BE RIGID, TRUE TO DIMENSION AND BE WATERTIGHT. ROUGH UNEVEN SURFACES WILL NOT BE PERMITTED.
 - WHERE WORK IS LOCATED IN PUBLIC RIGHT-OF-WAY, NOT LESS THAN 14 INCHES NOR MORE THAN 26 INCHES SHALL BE PROVIDED BETWEEN THE TOP OF THE CONE OR SLAB AND THE TOP OF THE MANHOLE FRAME.
 - CHANNELS SHALL BE MADE TO CONFORM ACCURATELY TO THE SEWER GRADE AND SHALL BE BROUGHT TOGETHER SMOOTHLY WITH WELL-ROUNDED JUNCTIONS, SATISFACTORY TO THE CITY ENGINEER.
 - THE CHANNELS SHALL BE FIELD POURED AFTER THE INLET AND OUTLET PIPES HAVE BEEN LAID AND FIRMLY GROUTED INTO PLACE AT THE PROPER ELEVATION. ALLOWANCES SHALL BE MADE FOR A MINIMUM OF 1/10 FOOT (0.1') DROP IN ELEVATION ACROSS THE MANHOLE IN THE DIRECTION OF FLOW.
 - BACKFILLING AND SURFACE RESTORATION SHALL CLOSELY FOLLOW INSTALLATION AND TESTING OF THE PIPE SO THAT NO MORE THAN 100 FEET OF PIPE IS LEFT EXPOSED WITH EXPRESS APPROVAL OF THE ENGINEER. CARE SHALL BE TAKEN TO INSURE THAT THE PIPE AND ITS PROTECTIVE COATINGS ARE NOT DAMAGED. NO ROCKS OR STONE SHALL BE PERMITTED WITHIN 12" OF THE PIPE.
 - WHEN REQUIRED IN AREAS OF UNSUITABLE TRENCH BOTTOM, FOUNDATION GRAVEL SHALL CONSIST OF CLEAN, GRANULAR MATERIAL FREE FROM OBJECTIONABLE MATERIALS SUCH AS VEGETABLE MATTER OR OTHER DELETERIOUS SUBSTANCES WITH AT LEAST 90 PERCENT COARSE MATERIAL RANGING FROM 1" IN DIAMETER TO 3" IN DIAMETER AND 100% 3" IN DIAMETER OR LESS.
 - 3/8" CLEAN MANUFACTURED PEA GRAVEL BEDDING SHALL BE REQUIRED.
 - BEDDING MATERIAL SHALL BE CAREFULLY PLACED AND FIRMLY COMPACTED TO PROVIDE A FIRM, UNIFORM CRADLE FOR THE PIPE. THE MINIMUM THICKNESS OF THE LAYER OF BEDDING MATERIAL REQUIRED SHALL BE 4 INCHES UNDER THE BELL FOR ALL PIPE SIZES OF 27 INCHES DIAMETER AND SMALLER, 6 INCHES FOR ALL PIPE SIZES, 30 INCHES DIAMETER AND LARGER AND 6 INCHES UNDER THE BELL OF THE PIPE FOR ALL DIAMETER PIPES WHERE ROCK IS EXCAVATED. TO PROVIDE THIS FIRM, CONTINUOUS SUPPORT FOR THE PIPE, IT IS NECESSARY TO HAND TAMP OR "SLICE" BEDDING MATERIAL SOLIDLY UNDER THE PIPE.
 - AFTER THE PIPE LAYING OPERATION, ADDITIONAL BEDDING MATERIAL SHALL BE PLACED AND COMPACTED BY HAND TOOLS FOR THE FULL WIDTH OF THE TRENCH TO A HEIGHT OF 12" ABOVE THE TOP OF THE SEWER MAIN AND 6" ABOVE THE TOP OF THE WATER MAIN.
 - IT IS ASSUMED THAT EXCAVATED MATERIAL IS SUITABLE FOR TRENCH BACKFILL, WHERE EXCAVATED MATERIAL IS NOT APPROVED FOR BACKFILL GRAVEL BASE, CLASS B, CONFORMING TO THE REQUIREMENTS OF SECTION 9-03.10 OF THE STATE OF WASHINGTON STANDARD SPECIFICATIONS FOR ROAD, BRIDGE AND MUNICIPAL CONSTRUCTION, OR GRANULAR MATERIAL COMMONLY KNOWN AS BANK RUN GRAVEL, SHALL BE USED AS DIRECTED BY THE ENGINEER.
 - ALL JOINTS SHALL BE MADE UP IN STRICT COMPLIANCE WITH THE MANUFACTURER'S DIRECTIONS AND ALL SEWER PIPE MANUFACTURE AND HANDLING SHALL MEET OR EXCEED THE ASTM AND CPWA RECOMMENDED SPECIFICATIONS, CURRENT REVISIONS.
 - FURTHER, ALL 8" OR LARGER PVC PIPE LAID SHALL BE DEFLECTION TESTED IN ACCORDANCE WITH SECTION 7-17-3 OF THE WASHINGTON STATE DEPARTMENT OF TRANSPORTATION STANDARD SPECIFICATIONS FOR ROAD, BRIDGE AND MUNICIPAL CONSTRUCTION. FOR ACCEPTANCE, PVC PIPE SHALL NOT HAVE ANY DIAMETER DECREASED BY 5 PERCENT OR MORE.
 - THE SEWER PIPE, UNLESS OTHERWISE APPROVED BY THE CITY ENGINEER, SHALL BE INSTALLED UPGRADE FROM POINT OF CONNECTION TO THE EXISTING SEWER OR FROM A DESIGNATED STARTING POINT TO LINE AND GRADE PER APPROVED PLANS. THE SEWER PIPE SHALL BE INSTALLED WITH THE BELL END FORWARD OR UPGRADE. WHEN PIPE LAYING IS NOT IN PROGRESS, THE FORWARD END OF THE PIPE SHALL BE KEPT TIGHTLY CLOSED WITH AN APPROVED TEMPORARY PLUG. WHEREVER MOVABLE SHORING (STEEL BOX) IS USED IN THE DITCH, CARE SHALL BE TAKEN SO THAT THE PIPE AND/OR JOINTS DO NOT MOVE WHEN THE SHORING OR BOX IS MOVED. ANY INDICATION THAT JOINTS ARE NOT BEING ADEQUATELY HELD SHALL BE SUFFICIENT REASON FOR THE CITY ENGINEER TO REQUIRE RESTRAINTS, WHETHER OR NOT MOVABLE SHORING IS BEING USED.
 - AT THE TIME OF BUILDING PERMIT INDIVIDUAL LOT OWNERS MAY BE REQUIRED TO INSTALL MONITORING MANHOLES AS REQUIRED BY THE CITY.
 - ALL MANHOLE STRUCTURES SHALL BE INSPECTED AND SIGNED OFF PRIOR TO BACKFILL BEING ADDED TO THE EXCAVATION.
 - ACCESS SHALL BE PROVIDED TO THE CONSTRUCTION SITE AT ALL TIMES FOR INSPECTION PU
 - SEWER TRACER TAPE REQUIRED OVER ALL SEWER PIPE INSTALLATION.
 - INSTALL SIDE SEWER STUBS TO ONE SIDE OR THE OTHER OF CEMENT/ASPHALT DRIVEWAYS WHEN POSSIBLE.
 - SIDE SEWERS ARE TO BE CAPPED AND MARKED BY A 2" X 4" MARKED S/S. THE STUB MAKER MUST INCLUDE LOT NUMBER AND DEPTH OF STUB INVERT. (SEE SERVICE CONNECTION DETAIL, S-8).
 - SEWER BACKFILL WITHIN THE CITY RIGHT OF WAY TO BE COMPACTED TO 95% WITH TESTING RESULTS TO THE CITY OR CDP BACKFILL REQUIRED.
 - ALL SANITARY SEWER MANHOLES OUTSIDE OF PAVED OR CONCRETE AREAS MUST HAVE A 6' X 6' REINFORCED CONCRETE PAD SET TO FINISH GRADE.
 - SANITARY SEWER MARKER POSTS ARE REQUIRED TO HAVE A 12" GAGE WIRE TO THE STUB.
 - ALL SANITARY SIDE SEWERS ARE TO BE DIMENSION FROM THE NEAREST DOWNSTREAM MANHOLE RATHER THAN THE INVERT OF THE PIPE.
 - WYES ARE NOT ALLOWED ON LINES 8" AND LARGER, TEES ARE REQUIRED.
 - SIDE SEWERS STUBS MUST EXTEND A MINIMUM OF 10' BEYOND THE PROPERTY LINE AND A _____ OF 5' BEYOND THE UTILITY EASEMENT.

CALL 48 HOURS BEFORE YOU DIG
1-800-424-5555

FILE NUMBER: C-04-014-LP
DOGWOOD MEADOWS
8105 & 8109 172ND ST. N.E.
TAX I.D.: #31052300401600 & 31052300401700
PORTIONS OF THE N.E. 1/4 AND THE S.E. 1/4 OF THE S.E. 1/4
SECTION 23, TOWNSHIP 31 NORTH, RANGE 5 EAST, W.M.
SNOHOMISH COUNTY, WASHINGTON

OMEGA ENGINEERING, INC.
2210 HEWITT AVENUE
SUITE NUMBER 204
EVERETT, WA 98201
1 425.387.3820
1 425.259.1958

OMEGA ENGINEERING, INC. REVISED THE APPROVED CIVIL PLANS PREPARED BY PATRICK HARRON AND ASSOCIATES DUE TO ROAD ALIGNMENT AND ELEVATION CHANGES AT THE ROAD CONNECTION TO THE PLAT TO THE WEST. THE REVISIONS PREPARED BY OMEGA ENGINEERING ARE CLOUDED.



BY	DATE	DESCRIPTION
JMS	7/19/04	CONSTRUCTION SUBMITTAL
JMS	5/05	REV. YARD DRAINS

AS-BUILT DRAWING - BY OMEGA ENGINEERING

STORM PLAN & PROFILE

PATRICK HARRON & ASSOCIATES, LLC

Patrick Harron & Associates, LLC
Engineering Planning
14800 Interurban Ave. S.
Suite Number 279
Seattle, WA 98168
T 206.874.4859
F 206.874.4880

PROJ. NO.	04114	DRN. BY:	JMS
OWN. BY:	NO	CHK. BY:	BGH
DATE:		APP. BY:	

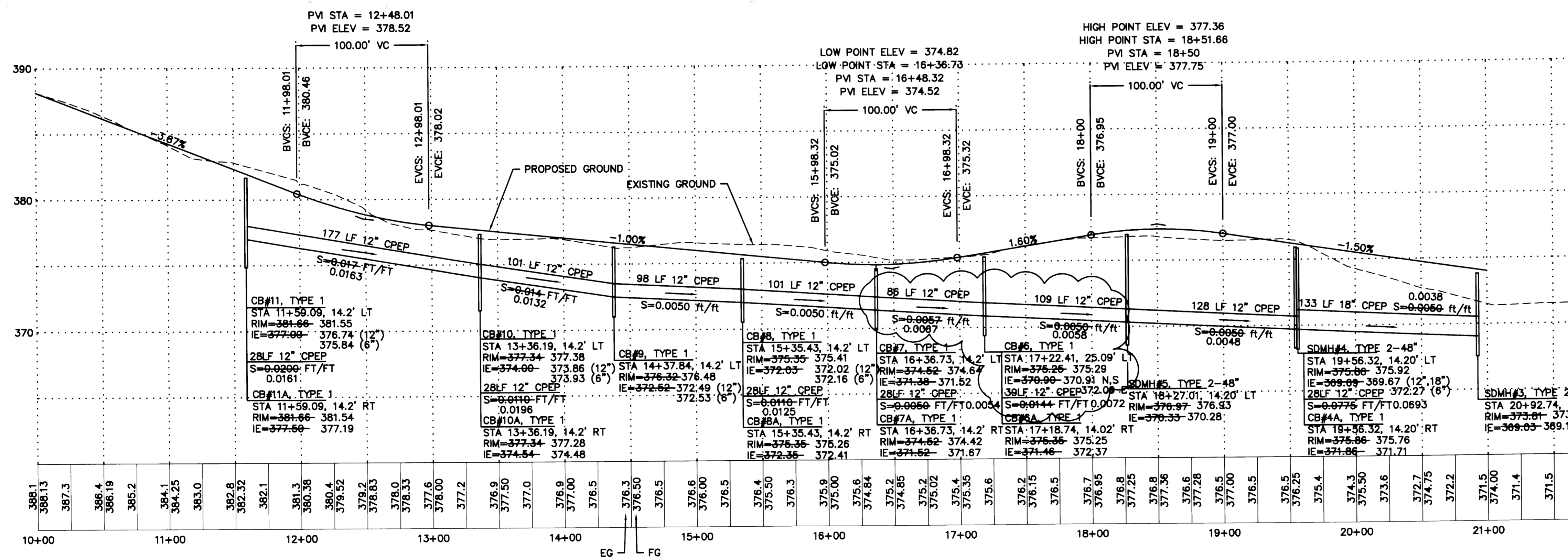
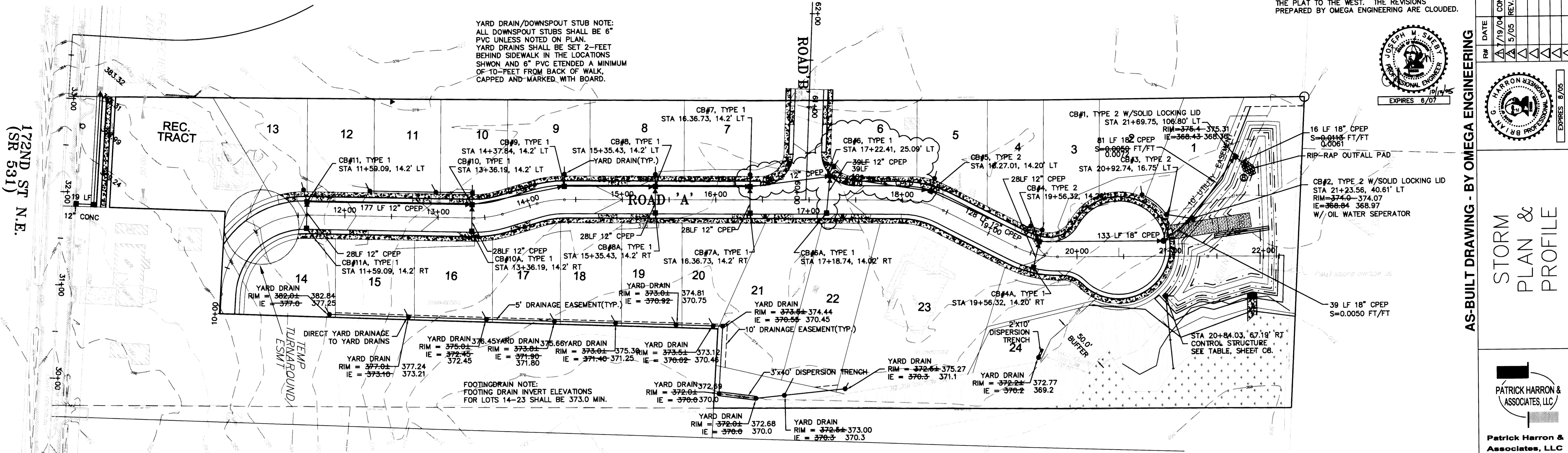
DOGWOOD MEADOWS

SNOHOMISH COUNTY, WASHINGTON
PORTION OF SECTION 23, TOWNSHIP 31 NORTH, RANGE 5 EAST, W.M.
DOGWOOD MEADOWS

PL:	
CADD FILE:	CIVIL BASE
DATE:	12.01.04
SCALE:	1" = 50'
DRAWING NO.:	C6_13

YARD DRAIN/DOWNSPOUT STUB NOTE:
ALL DOWNSPOUT STUBS SHALL BE 6" PVC UNLESS NOTED ON PLAN.
YARD DRAINS SHALL BE SET 2'-FEET BEHIND SIDEWALK IN THE LOCATIONS SHOWN AND 6" PVC EXTENDED A MINIMUM OF 10'-FEET FROM BACK OF WALK, CAPPED AND MARKED WITH BOARD.

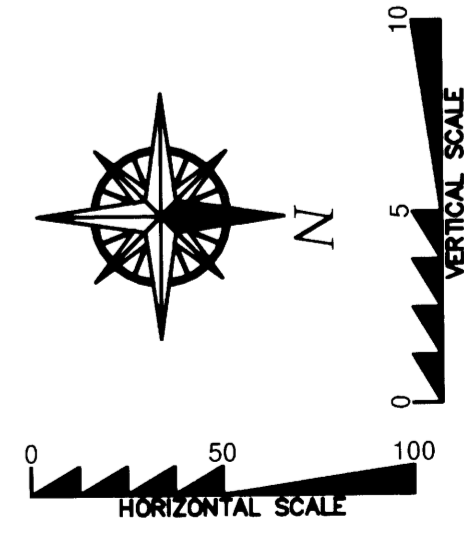
FOOTING DRAIN NOTE:
FOOTING DRAIN INVERT ELEVATIONS FOR LOTS 14-23 SHALL BE 373.0 MIN.



CITY OF ARLINGTON

THIS SHEET HAS BEEN APPROVED PER CONDITIONS ON THE COVER SHEET.

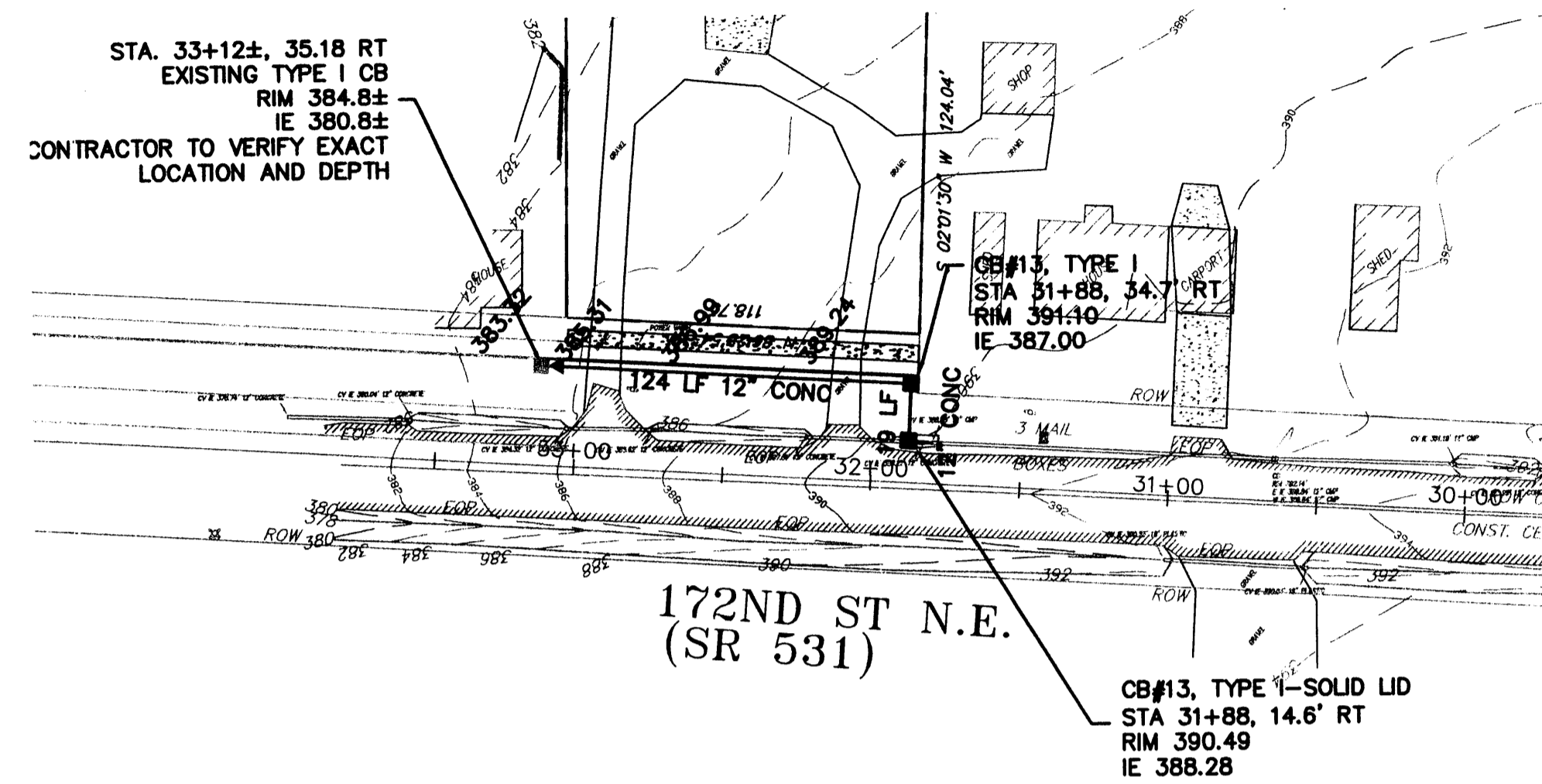
CONSTRUCTION	AS-BUILT ACKNOWLEDGEMENT
By: _____ City Engineer	By: <i>[Signature]</i> City Engineer
Date: ___/___/___	Date: 10/21/2005



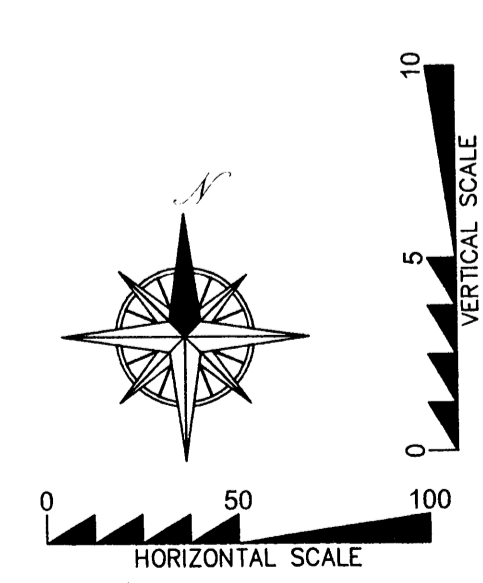
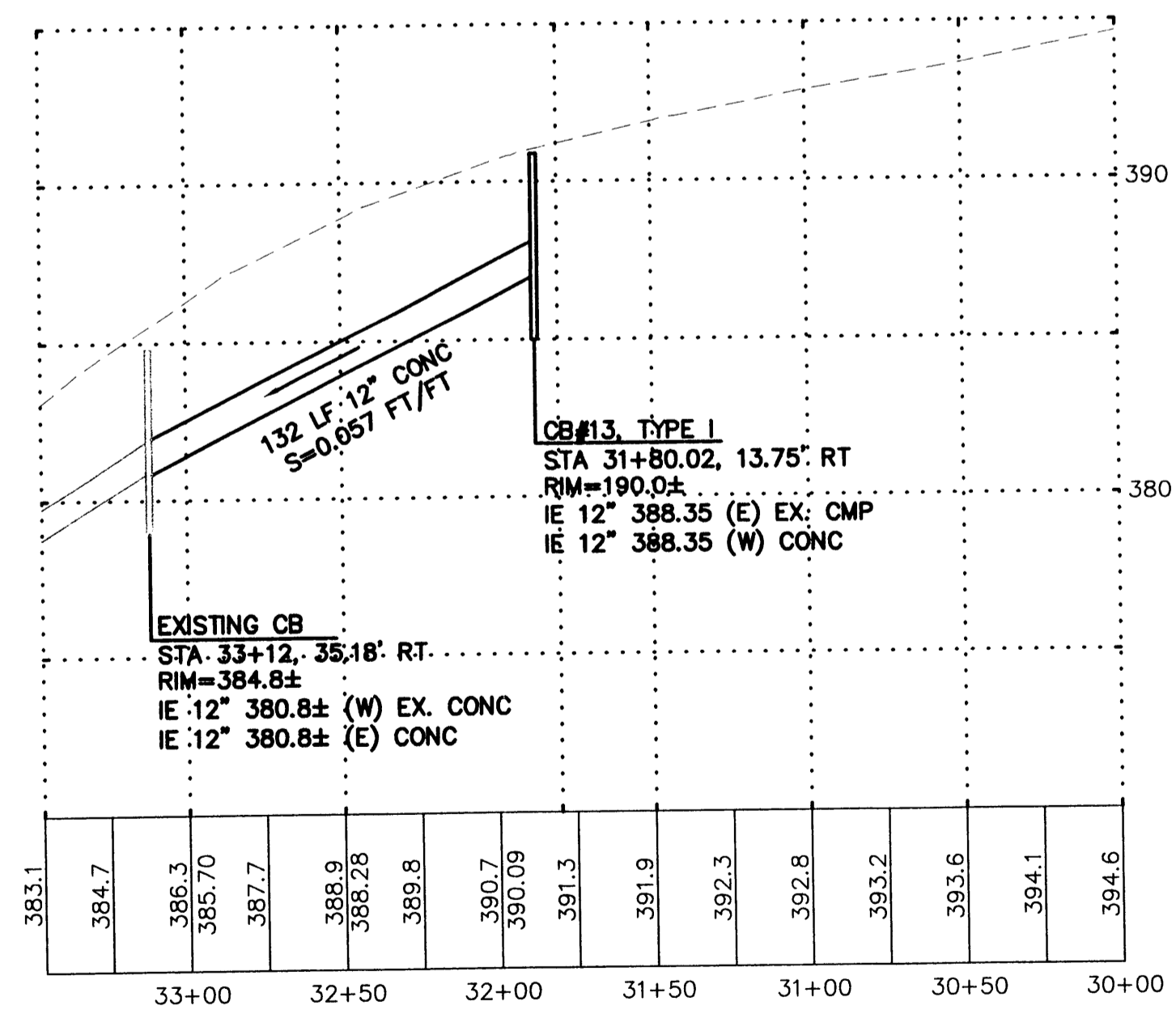
ROAD A
SCALE: 1" = 50' HORIZ.
1" = 5' VERT.

**CALL 48 HOURS
BEFORE YOU DIG
1-800-424-5555**

FILE NUMBER: C-04-014-LP
 DOGWOOD MEADOWS
 8105 & 8109 172ND ST. N.E.
 TAX I.D.: #31052300401600 & 31052300401700
 PORTIONS OF THE N.E. 1/4 AND THE S.E. 1/4 OF THE S.E. 1/4
 SECTION 23, TOWNSHIP 31 NORTH, RANGE 5 EAST, W.M.
 SNOHOMISH COUNTY, WASHINGTON



STORM DRAINAGE TO BE DONE BY OTHERS UNDER PERMIT TO MAGNOLIA ESTATES



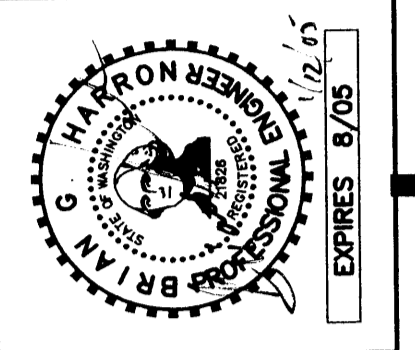
172ND ST NE
 SCALE: 1" = 50' HORIZ.
 = 5' VERT.

CITY OF ARLINGTON	
THIS SHEET HAS BEEN APPROVED PER CONDITIONS ON THE COVER SHEET.	
CONSTRUCTION By: <i>GR</i> City Engineer Date: 1/21/05	AS-BUILT ACKNOWLEDGEMENT By: _____ City Engineer Date: ___/___/___

NOTES:

- REFER TO CITY OF ARLINGTON PUBLIC WORKS CONSTRUCTION STANDARDS FOR DETAIL:
 REVISED STANDARDS ARE AVAILABLE FROM EARL ANDERSON AT 425.754.7486
- ① SHT SD-2 - STANDARD CATCH BASIN TYPE I
 - ② SHT SD-4 - CATCH BASIN TYPE II
 - ③ SHT SD-5 - STANDARD GRATE CATCH BASIN OR INLET
 - ④ SHT SD-7 - TYPICAL FRAME AND GRATE INSTALLATION
 - ⑤ SHT SD-9 - TYPICAL FLOW RESTRICTOR INSTALLATION
 - ⑥ SHT SD-10 - RESTRICTOR UNIT DETAIL
 - ⑦ SHT SD-11 - LIFT GATE ASSEMBLY AND SECONDARY ORIFICE DETAIL
 - ⑧ SHT SD-12 - TRASH RACK DETAIL

BY	DESCRIPTION	DATE	R#
JMS	CONSTRUCTION SUBMITTAL	1/19/04	1



STORM
PLAN &
PROFILE

Patrick Harron & Associates, LLC
 Engineering
 Planning
 14900 Interurban Ave. S.
 Suite Number 279
 Seattle, WA 98168
 T 206.674.4659
 F 206.674.4660

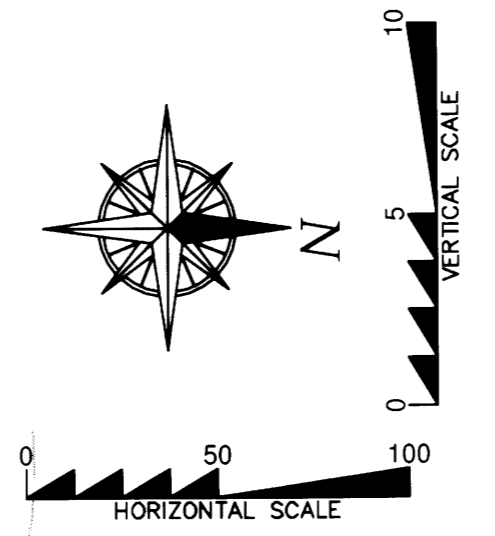
PROJ. NO. 04114	DES. BY JMS
DRAWN BY NO	CHECKED BY BGH
DATE REV. 	APP. BY

DOGWOOD MEADOWS
 SNOHOMISH COUNTY, WASHINGTON
 PORTION OF SECTION 23, TOWNSHIP
 31 NORTH, RANGE 5 EAST, W.M.
 DOGWOOD MEADOWS

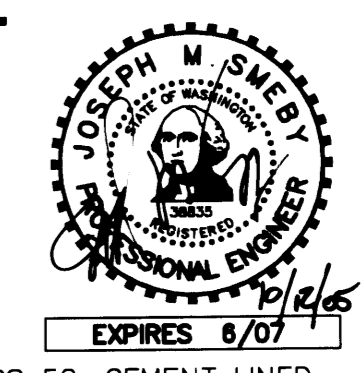
PLN.	
CADD FILE	CIVIL BASE
DATE:	12.01.04
SCALE:	1" = 50'
DRAWING NO.	C7 13

CALL 48 HOURS BEFORE YOU DIG 1-800-424-5555

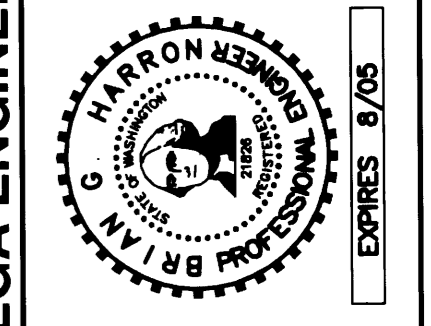
FILE NUMBER: C-04-014-LP
 DOGWOOD MEADOWS
 8105 & 8109 172ND ST. N.E.
 TAX I.D.: #31052300401600 & 31052300401700
 PORTIONS OF THE N.E. 1/4 AND THE S.E. 1/4 OF THE S.E. 1/4 SECTION 23, TOWNSHIP 31 NORTH, RANGE 5 EAST, W.M. SNOHOMISH COUNTY, WASHINGTON



OMEGA ENGINEERING, INC.
 2210 HEWITT AVENUE
 SUITE NUMBER 204
 EVERETT, WA 98201
 1 425.387.3820
 1 425.259.1958

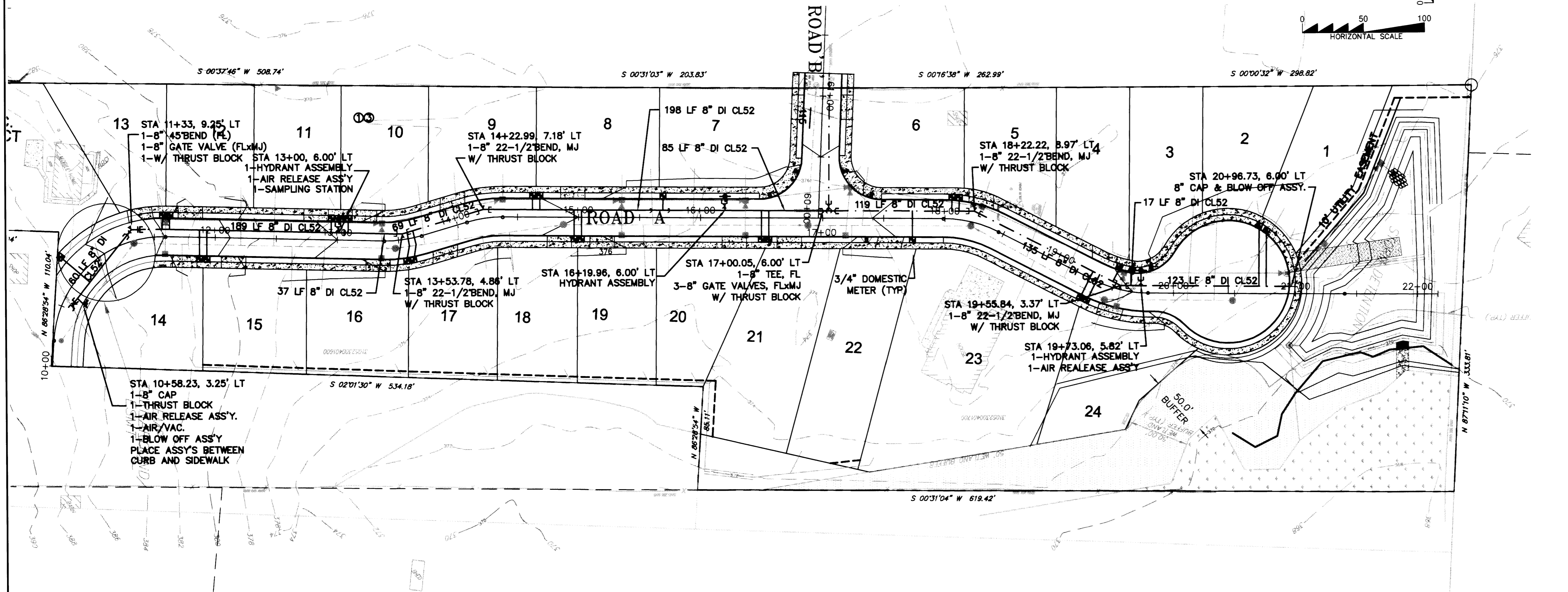


DATE	DESCRIPTION
7/19/04	CONSTRUCTION SUBMITTAL



AS-BUILT DRAWING - BY OMEGA ENGINEERING

WATER PLAN & PROFILE



WATER SYSTEM

1. WATER PIPE
 DUCTILE IRON WATER PIPE SHALL BE NEW, CLASS 52, CEMENT LINED, CONFORMING TO ANSI STANDARD A21.51 (AWWA-C151).

DUCTILE IRON PIPE SHALL BE PUSH-ON JOINT (TYTON JOINT ONLY) OR MECHANICAL JOINT. PIPE WITH PUSH-ON JOINTS SHALL BE FURNISHED WITH A SINGLE RUBBER GASKET. ALL GASKETS, INCLUDING MJ SHALL BE LUBRICATED TO EFFECT THE SEAL. PIPE WITH MECHANICAL JOINTS SHALL BE FURNISHED WITH A MECHANICAL JOINT OF THE STUFFING BOX TYPE, INCLUDING RUBBER GASKET, CAST-IRON GLAND, AND TEE-HEAD BOLTS AND NUTS TO EFFECT A SEAL. ALL JOINTS SHALL CONFORM TO ANSI STANDARD A21.11 (AWWA C111).

FLANGED JOINTS SHALL CONFORM TO ANSI STANDARD B16.1.

INTERNALLY LOCKED JOINTS SHALL BE IN ACCORDANCE WITH ANSI A21.11 AND EQUAL TO US PIPE TR. FLEX OR GRIFFIN "SNAP LOK".

BELL AND SOCKET JOINTS SHALL BE IN ACCORDANCE WITH ANSI A21.10 AND EQUAL US PIPE "UNIFLEX".

STANDARD THICKNESS CEMENT MORTAR LINING SHALL BE IN ACCORDANCE WITH ANSI STANDARD A21.4 (AWWA C-104).

THE CONTRACTOR SHALL FURNISH CERTIFICATION FROM THE MANUFACTURER OF THE PIPE AND GASKET BEING SUPPLIED THAT INSPECTION AND ALL OF THE SPECIFIED TESTS HAVE BEEN MADE AND THE RESULTS THEREOF COMPLY WITH THE REQUIREMENT OF THIS STANDARD.

2. WATER SERVICE

a. DRISCOPIPE CTS CL 200 HI Mol Poly PIPE ALL DIAMETERS 1"-2"
 LARGE DIAMETER WATER SERVICE PIPE SHALL BE DRISCOPIPE CTS CL 200 HI POLY PIPE (200 PSI). DRISCOPIPE SHALL CONFORM TO ASTM D-2737-SDR9 (PE3408)
 CTS 110 SS LINERS FOR POLYPIPE SHALL BE USED.

WATER SERVICES 1 1/2" TO 4" IN SIZE REQUIRE A MAINLINE SIZE TEE WITH 6" FLANGE AND 6" R.S.G.V. WITH ADAPTER TO SERVICE SIZE.

3. DUCTILE IRON FITTINGS

DUCTILE IRON FITTINGS SHALL BE SHORT BODY FOR PRESSURE RATING OF 150 PSI, UNLESS OTHERWISE NOTED. METAL THICKNESS AND MANUFACTURING PROCESS SHALL CONFORM TO APPLICABLE PORTIONS OF ANSI STANDARD A21.10, A21.11, A21.53, B2-3 AND B16.4.

STANDARD CEMENT MORTAR LINING IN ACCORDANCE WITH ANSI STANDARD A21.4 (AWWA C-104).

RUBBER GASKETS FOR PUSH-ON JOINT MAY BE MANUFACTURED WITH US PIPE TR. FLEX, GRIFFIN "SNAP LOK" OR PACIFIC STATES RESTRAINED JOINT. MEGA-LUG GLANDS MAY BE USED AT FITTINGS.

4. FIRE HYDRANTS

FIRE HYDRANTS SHALL BE MULLER SUPER CENTURION 250 W/5 1/4" MVO OR MH929 RELIANT W/5 1/4" MVO. INSTALL PER FIRE HYDRANT ASSEMBLY DRAWING.

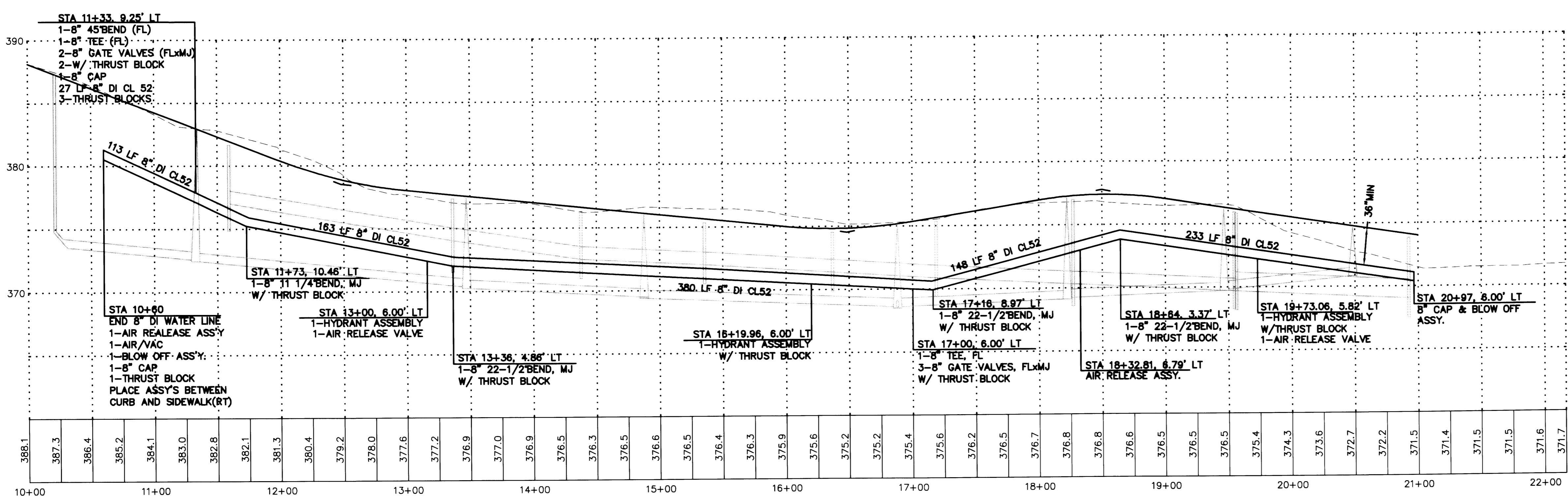
FIRE HYDRANTS SHALL BE FITTED WITH AN APPROVED 5" STORZ TO 4 1/2" NST FEMALE ADAPTER.

5. GATE VALVES, RESILIENT SEAT

VALVES 12" AND SMALLER SHALL CONFORM WITH THE REQUIREMENT OF AWWA. STANDARD SPECIFICATIONS FOR GATE VALVES FOR ORDINARY WATER WORKER SERVICE NO. C-509, EXCEPT AS SUPERSEDED BY THE FOLLOWING: THEY SHALL BE IRON BODY WITH EPOXY COATING INSIDE, RESILIENT SEAR RUBBER VULCANIZED TO GATE, OR S.S. SEARING IN DISC WITH S.S. SCREWS. THE VALVES SHALL BE NON-RISING STEM, OPEN TO THE LEFT, AND EQUIPPED WITH STANDARD 2" SQUARE OPENING NUTS. VALVES TO BE EQUAL TO AMERICAN-BOCRS, WATEROUS SERIES 500 OR MUELLER A- 2370.

6. METER BOXES

METER BOXES SHALL BE MID STATES PLASTIC W/DUCTILE IRON LIDS AND A 1 3/4" HOLE IN LID FOR "TOUCH READ" MOUNT. FOR 5/8" AND 1" METERS USE THE MSBCF 1324-12. FOR 1 1/2" AND 2" METERS USE THE MSBCF1730-18.



NOTES:

REFER TO CITY OF ARLINGTON PUBLIC WORKS CONSTRUCTION STANDARDS FOR DETAIL:

- ① SHT W-1 - FIRE HYDRANT ASSEMBLY
- ② SHT W-2 - 3/4" AND 1" DOMESTIC WATER SERVICE
- ③ SHT W-3 - CONCRETE BLOCKING
- ④ SHT W-4 - CONCRETE BLOCKING VERTICAL BENDS
- ⑤ SHT W-5 - BLOW OFF ASSEMBLY
- ⑥ SHT W-6 - VALVE NUT OPERATOR EXTENSION *AS NEEDED
- ⑦ SHT W-8 - AIR AND VACUUM RELEASE VALVE ASSEMBLY

ROAD A
 SCALE: 1" = 50' HORIZ.
 = 5' VERT.

CITY OF ARLINGTON	
THIS SHEET HAS BEEN APPROVED PER CONDITIONS ON THE COVER SHEET.	
CONSTRUCTION	AS-BUILT ACKNOWLEDGEMENT
By: _____ City Engineer	By: <i>Yanyan Sel</i> City Engineer
Date: ___/___/___	Date: 10/11/2005

DOGWOOD MEADOWS
 SNOHOMISH COUNTY, WASHINGTON
 PORTION OF SECTION 23, TOWNSHIP 31 NORTH, RANGE 5 EAST, W.M. DOGWOOD MEADOWS

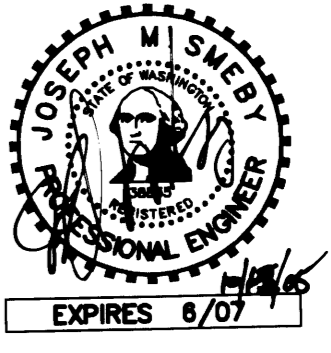
PROJ. NO. 04114	DWN. BY: JMS
DWN. BY: NO	CHK. BY: BGH
DATE: 12.01.04	SCALE: 1" = 50'
DRAWING NO. C11_13	

CALL 48 HOURS
BEFORE YOU DIG
1-800-424-5555

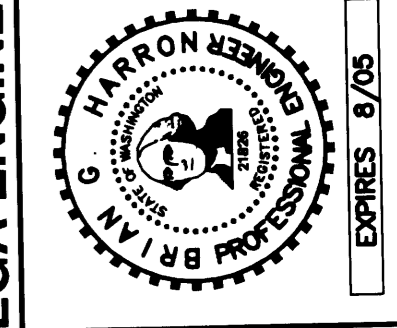
FILE NUMBER: C-04-014-LP
DOGWOOD MEADOWS
8105 & 8109 172ND ST. N.E.
TAX I.D.: #31052300401600 & 31052300401700
PORTIONS OF THE N.E. 1/4 AND THE S.E. 1/4 OF THE S.E. 1/4
SECTION 23, TOWNSHIP 31 NORTH, RANGE 5 EAST, W.M.
SNOHOMISH COUNTY, WASHINGTON



2210 HEWITT AVENUE
SUITE NUMBER 204
EVERETT, WA 98201
t 425.387.3820
f 425.259.1958



BY	DESCRIPTION
JMS	CONSTRUCTION SUBMITTAL



AS-BUILT DRAWING - BY OMEGA ENGINEERING

WATER
&
PLAN &
PROFILE

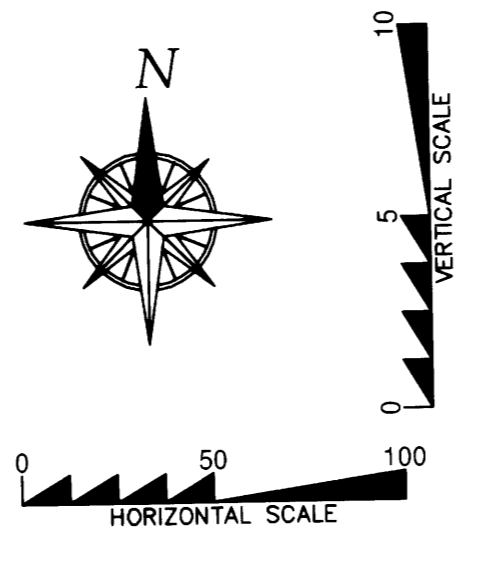
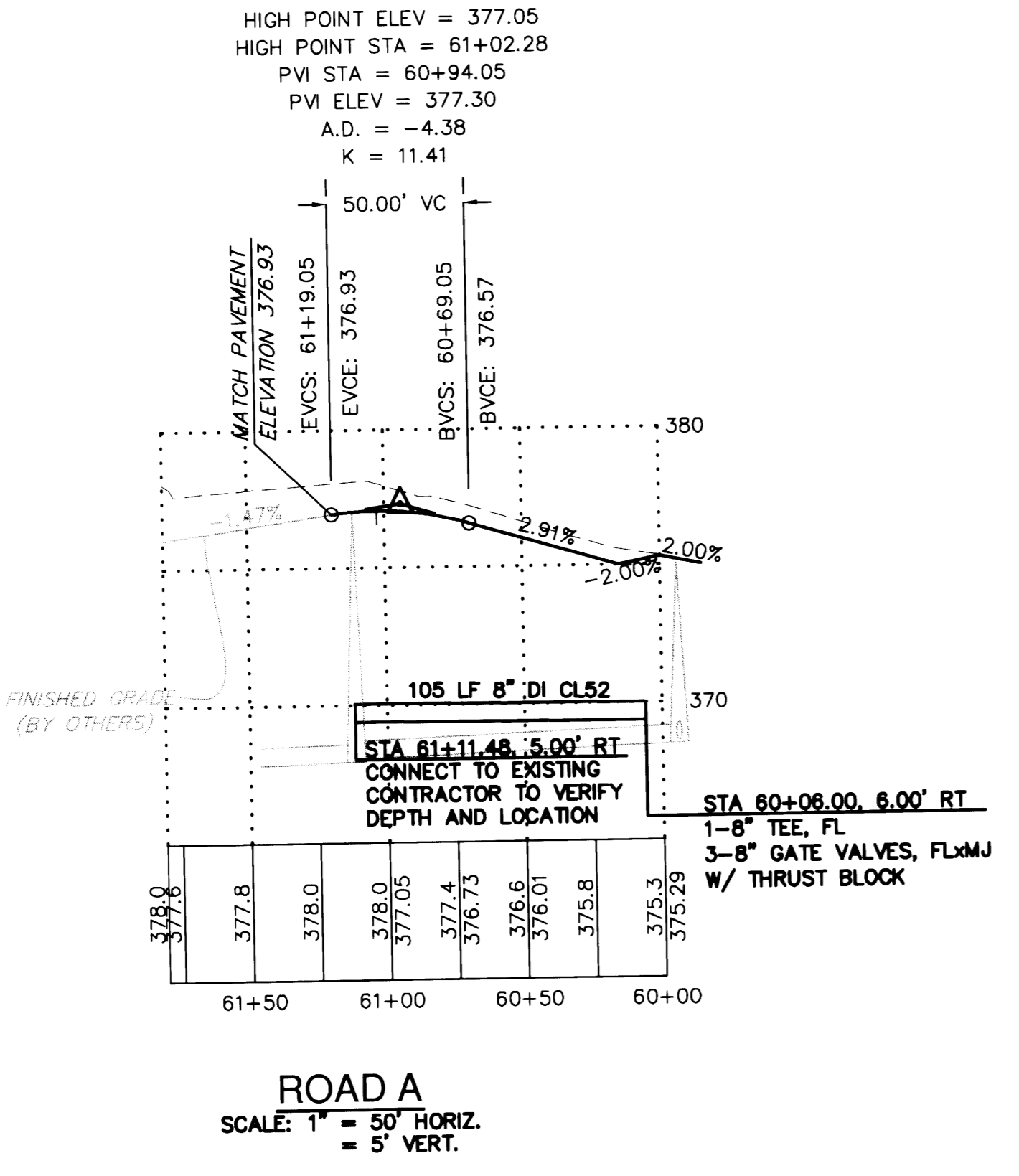
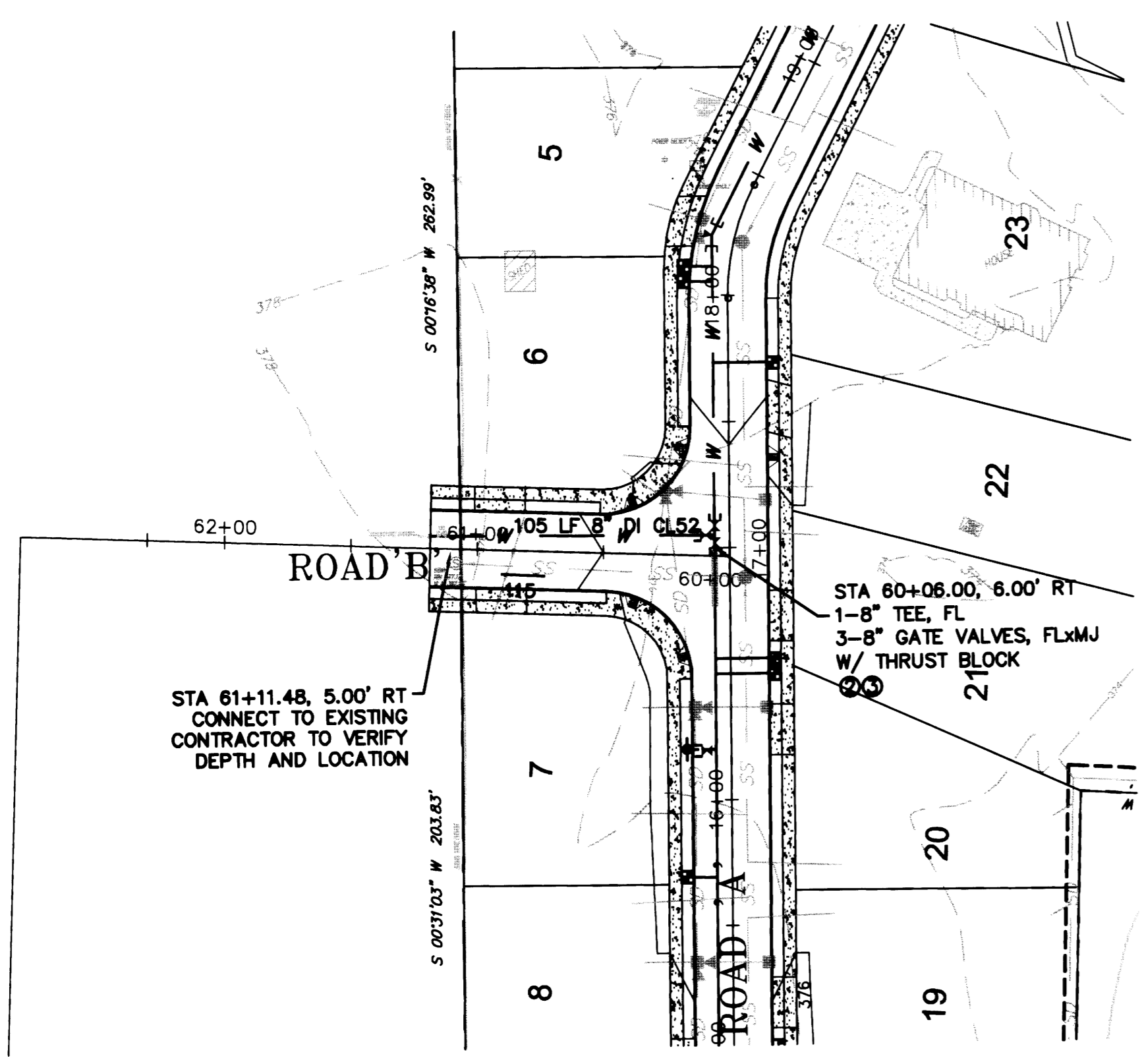
Patrick Harron &
Associates, LLC

Patrick Harron &
Associates, LLC
Engineering
Planning
14900 Interurban Ave. S.
Suite Number 279
Seattle, WA 98168
T 206.674.4659
F 206.674.4880

PROJ. NO: 04114	DRW. BY: JMS
OWN. BY: NO	CHK. BY: BGH
QA/RVW.:	APP. BY:

DOGWOOD MEADOWS

SNOHOMISH COUNTY, WASHINGTON
PORTION OF SECTION 23, TOWNSHIP
31 NORTH, RANGE 5 EAST, W.M.
DOGWOOD MEADOWS



CITY OF ARLINGTON	
THIS SHEET HAS BEEN APPROVED PER CONDITIONS ON THE COVER SHEET.	
CONSTRUCTION By: _____ City Engineer Date: ____/____/____	AS-BUILT ACKNOWLEDGEMENT By: <i>Key Elni</i> City Engineer Date: <i>10/21/2005</i>

PL: CIVIL BASE
DATE: 12.01.04
SCALE: 1" = 50'
DRAWING NO. C12_13