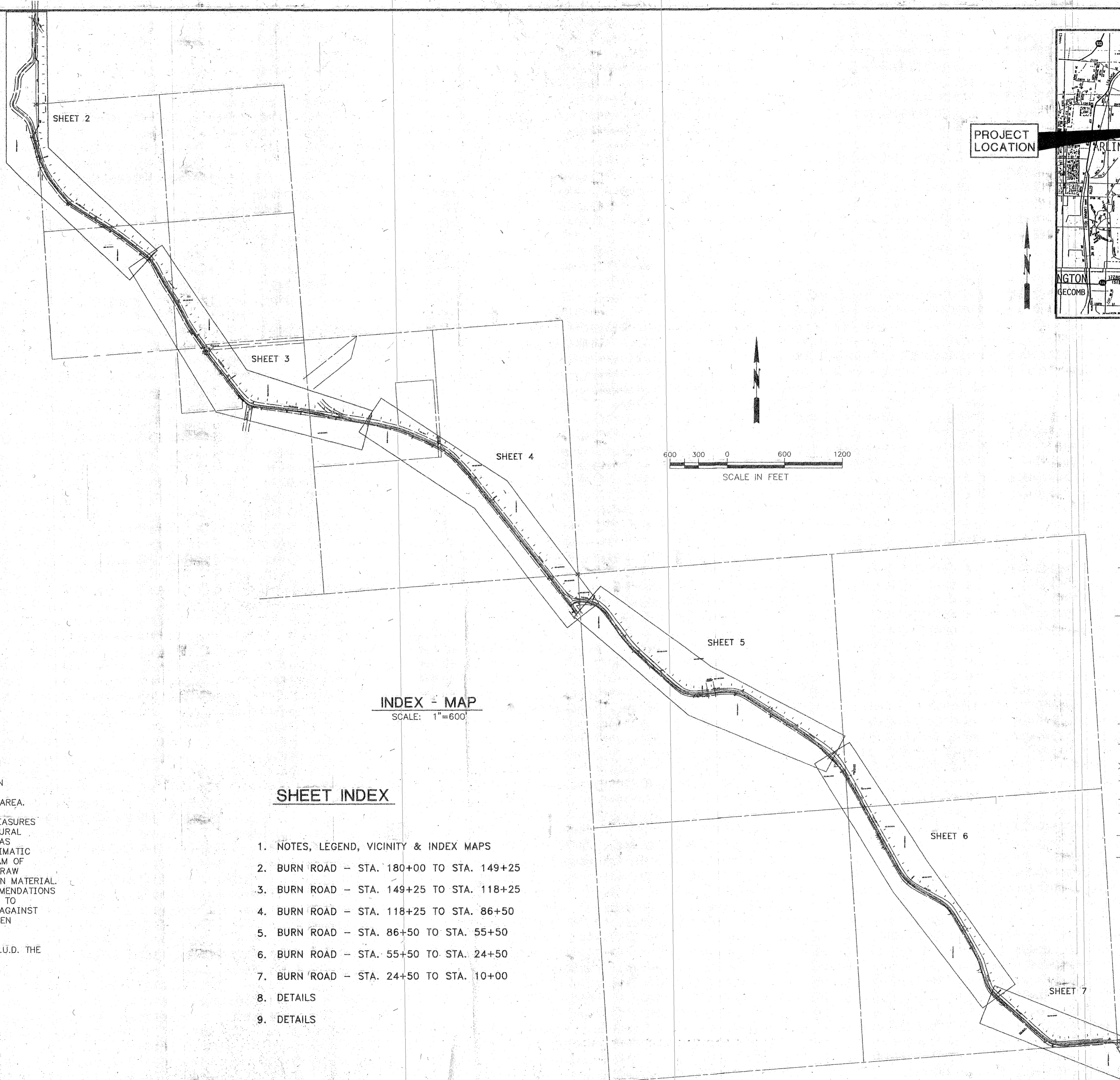


GENERAL NOTES:

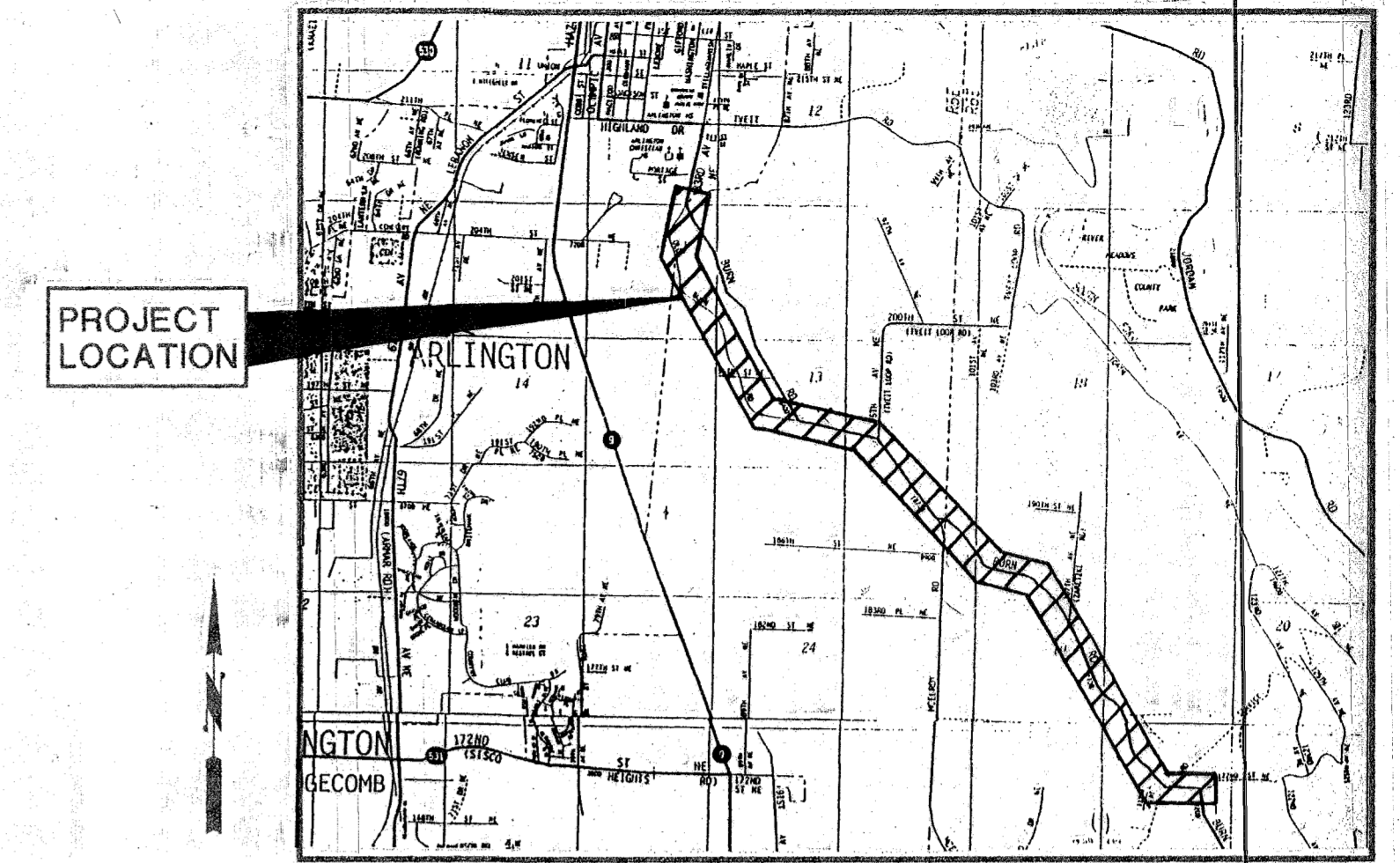
- ALL WORK SHALL CONFORM TO THE CURRENT EDITION OF THE STANDARDS, SPECIFICATIONS, RULES AND REGULATIONS OF THE CITY OF ARLINGTON, THESE DRAWINGS, AND THE PROJECT MANUAL.
- THE CONTRACTOR SHALL ATTEND A PRECONSTRUCTION CONFERENCE PRIOR TO THE START OF CONSTRUCTION.
- LOCATIONS SHOWN FOR EXISTING UTILITIES ARE APPROXIMATE. IDENTIFICATION LOCATION MARKING AND RESPONSIBILITY FOR UNDERGROUND FACILITIES OR UTILITIES IS GOVERNED BY THE PROVISIONS OF CHAPTER 19.122 REVISED CODE OF WASHINGTON.
- THE CONTRACTOR IS CAUTIONED THAT OVERHEAD ELECTRICAL SERVICE LINES ARE GENERALLY NOT SHOWN ON THE DRAWINGS. ELECTRICAL LINES SHOWN ON THE DRAWINGS ARE LOCATED BY POINT-TO-POINT, POWER POLE-TO-POWER POLE CONNECTION. THE CONTRACTOR IS RESPONSIBLE FOR DETERMINING THE EXTENT OF ANY HAZARD CREATED BY OVERHEAD ELECTRICAL POWER IN ALL AREAS AND SHALL FOLLOW PROCEDURES DURING CONSTRUCTION AS REQUIRED BY LAW AND REGULATION.
- CONTRACTOR SHALL FIELD VERIFY LOCATIONS AND CLEARANCES PRIOR TO CONSTRUCTION.
- WATER LINES SHALL BE DUCTILE IRON CLASS 52 UNLESS OTHERWISE NOTED.
- THE CONTRACTOR SHALL NOTIFY THE ENGINEER A MINIMUM OF 7 DAYS IN ADVANCE AND MAKE THE NECESSARY ARRANGEMENTS WITH THE PUBLIC WORKS DIRECTOR FOR CONNECTION TO EXISTING WATER LINES.
- MINIMUM VERTICAL SEPARATION BETWEEN UTILITIES SHALL BE 12 INCHES WITH A SAND CUSHION AND HAND COMPACTION. MINIMUM COVER OVER WATER MAIN SHALL BE 36 INCHES UNLESS OTHERWISE NOTED.
- NEW WATER MAINS ARE TO BE TESTED IN ACCORDANCE WITH THE SPECIFICATIONS PRIOR TO CONNECTING TO THE EXISTING WATER SYSTEM. THE USE OF AN APPROVED BACKFLOW DEVICE IS REQUIRED TO PREVENT ANY CROSS CONNECTIONS DURING TESTING.
- WATER MAINS SHALL BE INSTALLED OFF THE EDGE OF PAVEMENT. WHERE REQUIRED SAWCUT EXISTING PAVEMENT FOR WATER LINE INSTALLATION. AFTER PAVEMENT PATCHING, SEAL ALL SAWCUT EDGES WITH AN APPROVED SEALANT. SEE RIGHT-OF-WAY PERMIT FOR ADDITIONAL REQUIREMENTS.
- JOINT DEFLECTIONS USED TO MAKE HORIZONTAL CURVES SHALL NOT EXCEED MAXIMUM RECOMMENDED BY THE PIPE MANUFACTURER. IF CURVE CANNOT BE MADE BY DEFLECTING JOINTS, BENDS SHALL BE USED.
- CONTRACTOR SHALL USE BENDS AS REQUIRED TO RESPOND TO CHANGES IN SLOPE AND TO PREVENT EXCESSIVE PIPE JOINT DEFLECTIONS. VERTICAL BENDS SHALL BE INSTALLED PER STANDARD PLAN. LOCAL HIGH POINTS IN THE WATER MAIN ARE PROHIBITED.
- A SHALLOW ROADSIDE DITCH/DRAINAGE PATH IS PRESENT ALONG A PORTION OF THE PROJECT. DITCH IS LOCATED WITHIN THE RIGHT-OF-WAY. THE CONTRACTOR SHALL TAKE SUCH STEPS AS REQUIRED TO MAINTAIN, PROTECT AND RESTORE DRAINAGE PATHS TO THEIR ORIGINAL OR BETTER CONDITION.
- SEE THE STANDARD PLANS BOUND IN THE PROJECT MANUAL FOR ADDITIONAL REQUIREMENTS.
- AN AUTHORIZED NORTHWEST PIPELINE (NWP) REPRESENTATIVE (VIC SMITH - TELEPHONE No. 360-422-7802, CELLULAR No. 360-201-6815, PAGER 360-650-5946) MUST BE ON SITE DURING WORK PERFORMED ON OR ACROSS THE HIGH PRESSURE GAS PIPELINE RIGHT-OF-WAY. EXCAVATION CLOSER THAN 2 FEET TO THE PIPELINE SHALL BE DONE BY HAND UNTIL THE PIPELINES ARE EXPOSED AND SHALL BE DONE ONLY UNDER THE SUPERVISION OF AN AUTHORIZED NWP REPRESENTATIVE. NWP REPRESENTATIVE SHALL BE NOTIFIED A MINIMUM 7 WORKING DAYS PRIOR TO CONSTRUCTION IN THE AREA.
- THE CONTRACTOR SHALL PROVIDE EROSION AND SEDIMENTATION CONTROL MEASURES AS REQUIRED TO PREVENT SILTATION OF STORM DRAINAGE SYSTEMS OR NATURAL WATER COURSES. FACILITIES SHALL BE MAINTAINED, MOVED OR UPGRADED AS CONSTRUCTION PROGRESSES AND SHALL BE DEPENDENT ON WEATHER AND CLIMATIC CONDITIONS. MINIMUM FACILITIES SHALL INCLUDE SILT FENCES DOWNSTREAM OF CONSTRUCTION, COVERING OF STOCKPILED MATERIALS, FILTER FABRIC OR STRAW BALES AT CATCH BASIN GRATES, JUTE MATTING OR OTHER SLOPE PROTECTION MATERIAL. INSTALLATION SHALL BE IN ACCORDANCE WITH THE MANUFACTURER'S RECOMMENDATIONS AND WITH GOOD CONSTRUCTION PRACTICES AND SHALL BE INSPECTED DAILY TO ASSURE PROPER OPERATION. ALL DISTURBED AREAS SHALL BE STABILIZED AGAINST EROSION PROMPTLY AND THOROUGHLY DURING PERIODS OF WET WEATHER WHEN WORK IS NOT BEING PERFORMED.
- THE CONTRACTOR SHALL COORDINATE ALL POWER POLE HOLDING WITH THE P.U.D. THE CONTRACTOR SHALL NOT HOLD ANY POWER POLES OR SUPPORT POLES.



INDEX - MAP
SCALE: 1"=600'

SHEET INDEX

- NOTES, LEGEND, VICINITY & INDEX MAPS
- BURN ROAD - STA. 180+00 TO STA. 149+25
- BURN ROAD - STA. 149+25 TO STA. 118+25
- BURN ROAD - STA. 118+25 TO STA. 86+50
- BURN ROAD - STA. 86+50 TO STA. 55+50
- BURN ROAD - STA. 55+50 TO STA. 24+50
- BURN ROAD - STA. 24+50 TO STA. 10+00
- DETAILS
- DETAILS



LOCATION MAP
NOT TO SCALE

LEGEND

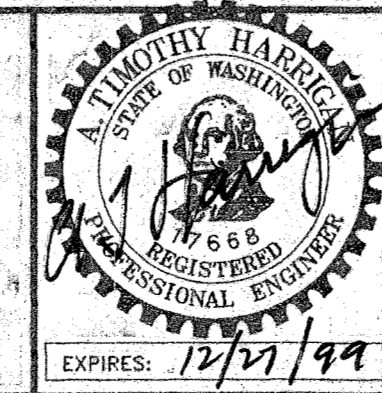
EXISTING	THIS PROJECT	DESCRIPTION
○	●	FIRE HYDRANT
○	⋈	GATE VALVE
○	⋈	BUTTERFLY VALVE
○	○	AIR RELIEF VALVE
○	○	BLOW-OFF
○	○	WATER MAIN (LENGTH, SIZE, TYPE)
---	---X---	SILT FENCE
---	---	CATCH BASIN AND STORM PIPE
○	○	LIGHT POLE
○	○	POWER POLE
→	→	GUY
⊥	⊥	SIGN
---	---	TELEPHONE CABLE
---	---	GAS
---	---	STORM DRAIN CULVERT
---	---	EDGE OF PAVEMENT
---	---	EDGE OF GRAVEL SHOULDER
---	---	FENCE
---	---	DRAINAGE PATH

REVISED TO CONFORM WITH CONSTRUCTION RECORDS
By: **VLG**
Ck'd: **TP**
Date: **4-13-00**

CALL 2 DAYS BEFORE YOU DIG
1-800-424-5555

308035R11.DWG 1:600 22x34 7-15-99

No.	Date	By	Ckd.	Appr.	Revision



CHS
CHS ENGINEERS INC. 12507 BEL-RED ROAD SUITE 101 BELLEVUE, WA 98005-2500
TEL (425) 637-3693 FAX (425) 637-3694

Drawn By DJ/VG	Date 2-99	Checked By TP	Date 3-99
Designed By MD	Date 2-99	Approved By TH	Date 6-99

Approved for Construction
[Signature]
City of Arlington
Date: 7/2/99

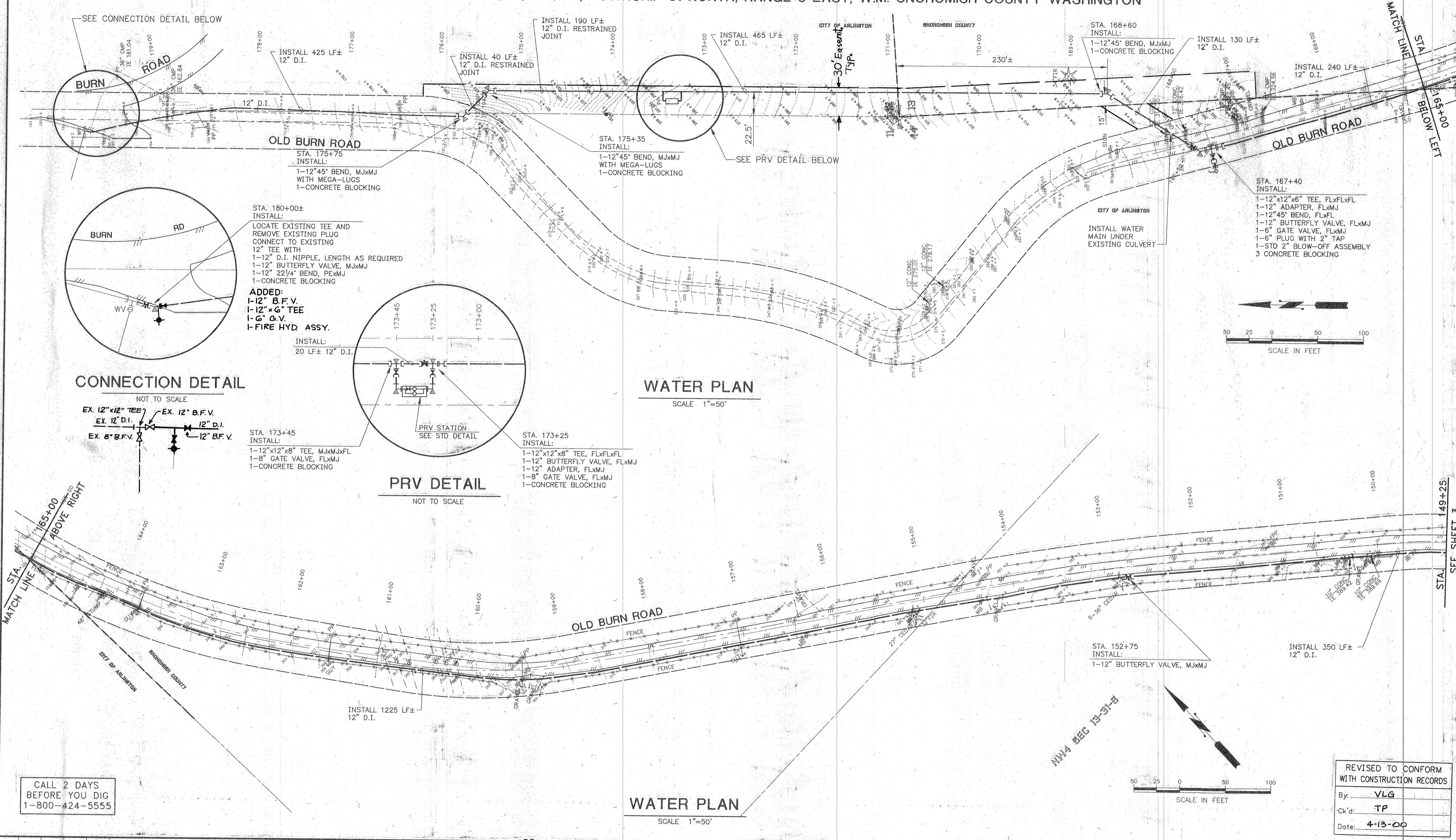
Scale:
Horiz. 1"=600'
Vert. N/A
Job No. 30803

CITY OF ARLINGTON

**BURN ROAD
WATER TRANSMISSION MAIN
LOCATION MAP, SHEET INDEX MAP, GENERAL NOTES**

Sheet 1
Of 9

A PORTION OF SECTIONS 11, 12, 13 & 14, TOWNSHIP 31 NORTH, RANGE 5 EAST, W.M. SNOHOMISH COUNTY WASHINGTON

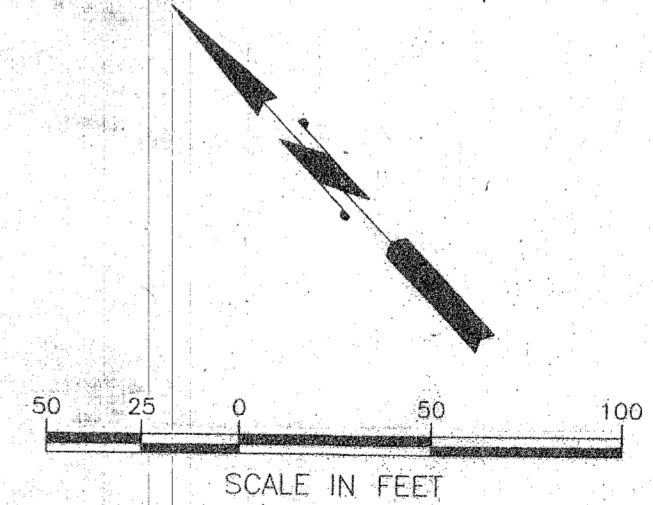
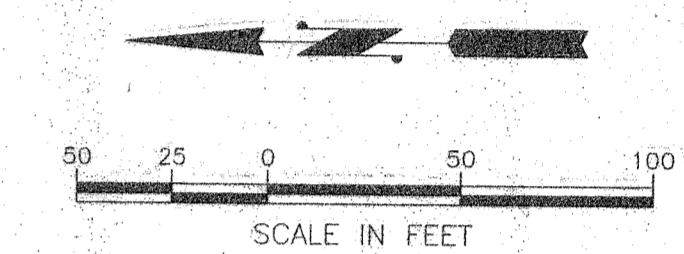


CONNECTION DETAIL
SCALE 1"=50'

WATER PLAN
SCALE 1"=50'

PRV DETAIL
SCALE 1"=50'

WATER PLAN
SCALE 1"=50'

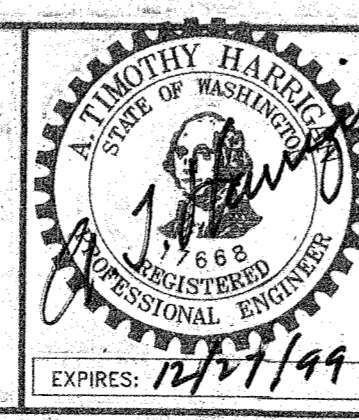


CALL 2 DAYS BEFORE YOU DIG
1-800-424-5555

REVISED TO CONFORM WITH CONSTRUCTION RECORDS
By: **VLG**
Ck'd: **TP**
Date: **4-13-00**

30803SH12.DWG 1:50 2/24/00 7-15-99

No.	Date	By	Ckd.	Appr.	Revision



CHS ENGINEERS INC.
12507 BEL-RED ROAD SUITE 101
BELLEVUE, WA 98005-2500
TEL (425) 637-3693 FAX (425) 637-3694

Drawn By	Date	Checked By	Date
DJ/VG	2-99	TP	3-99
Designed By	Date	Approved By	Date
MD	2-99	TH	6-99

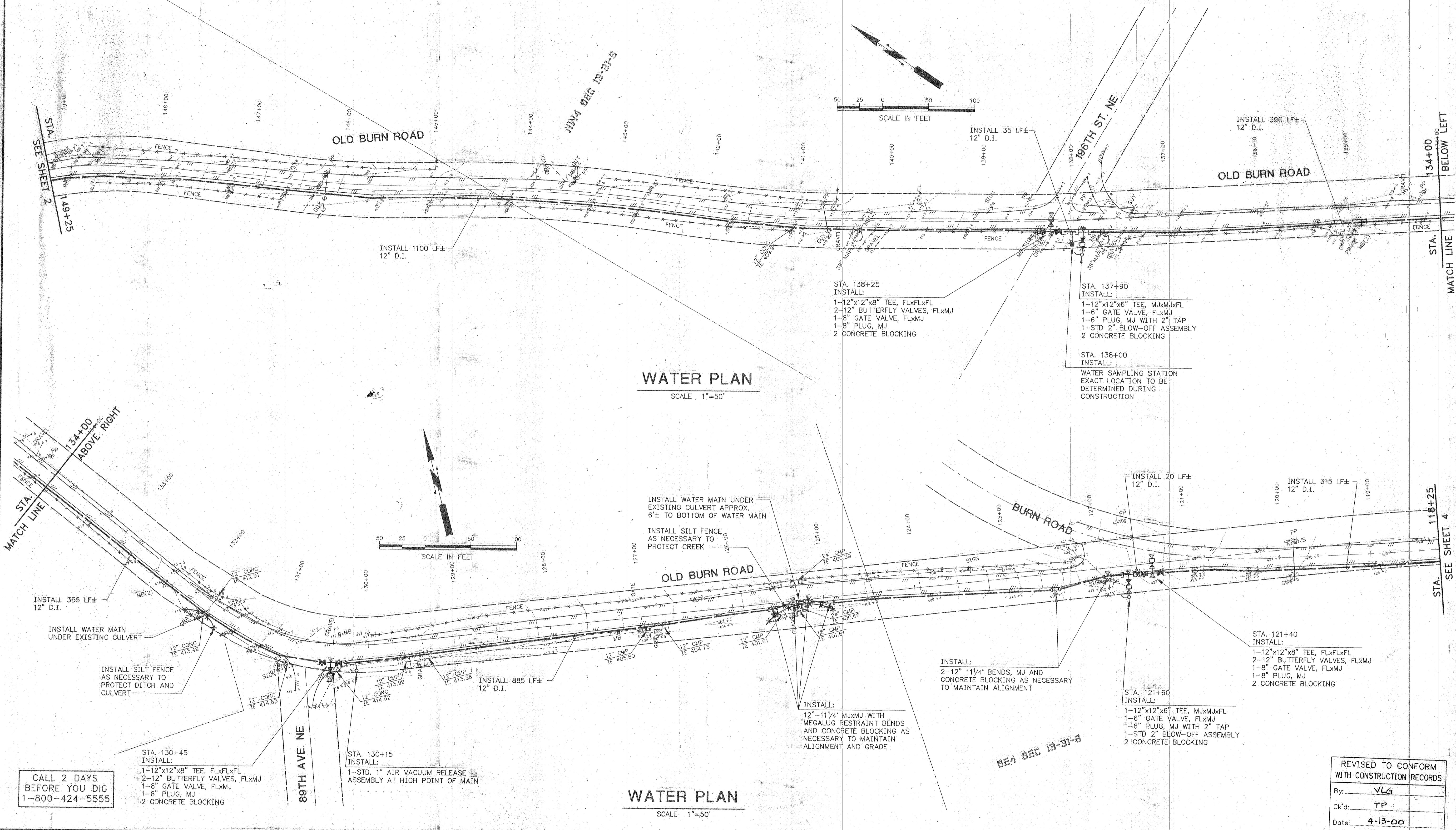
Approved for Construction
[Signature]
City of Arlington
Date: **7/2/99**

Scale:
Horiz: 1"=50'
Vert: N/A
Job No.: 30803

CITY OF ARLINGTON
BURN ROAD
WATER TRANSMISSION MAIN
STA. 180+00 TO STA. 149+25

Sheet **2**
Of **9**

A PORTION OF SECTION 13, TOWNSHIP 31 NORTH, RANGE 5 EAST, W.M. SNOHOMISH COUNTY WASHINGTON



WATER PLAN
SCALE 1"=50'

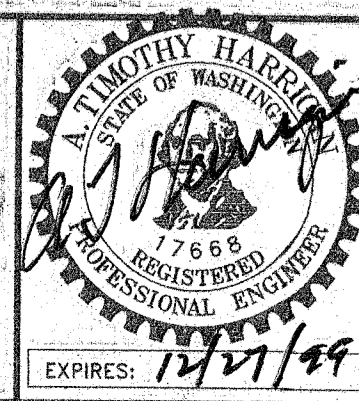
WATER PLAN
SCALE 1"=50'

CALL 2 DAYS BEFORE YOU DIG
1-800-424-5555

REVISED TO CONFORM WITH CONSTRUCTION RECORDS
By: VLG
Ck'd: TP
Date: 4-13-00

30803SHT3.DWG 1:50 2/23/04 7-15-99

No.	Date	By	Ckd.	Appr.	Revision



CHS ENGINEERS INC.
12507 BEL-RED ROAD SUITE 101
BELLEVUE, WA 98005-2500
TEL (425) 637-3693 FAX (425) 637-3694

Drawn By	Date	Checked By	Date
DJ/VG	2-99	TP	3-99
Designed By	Date	Approved By	Date
MD	2-99	TH	6-99

Approved for Construction

[Signature]
City of Arlington

Date: 7/21/99

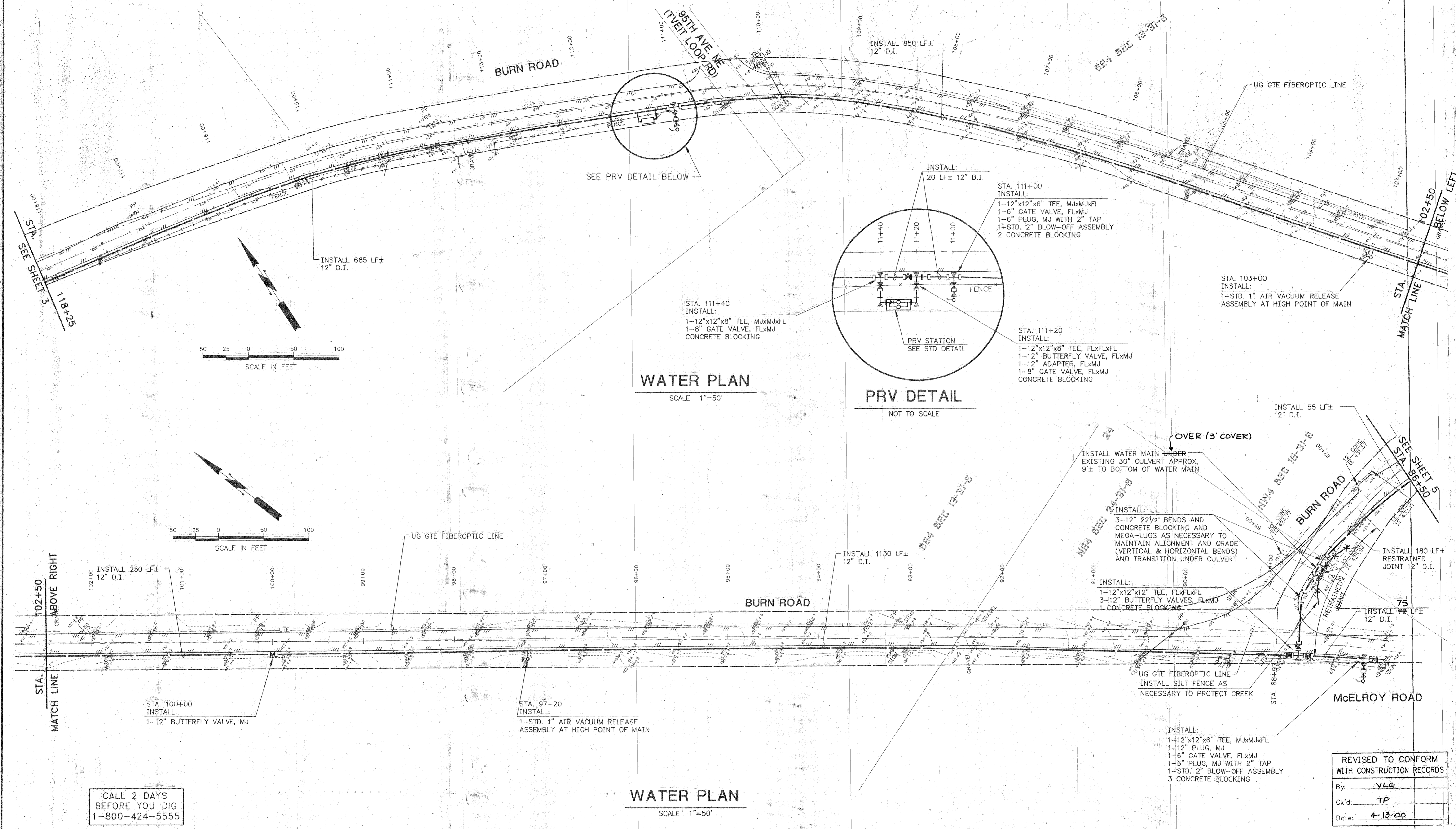
Scale:
Horiz. 1"=50'
Vert. N/A
Job No. 30803

CITY OF ARLINGTON

BURN ROAD
WATER TRANSMISSION MAIN
STA 149+25 TO STA. 118+25

Sheet 3
Of 9

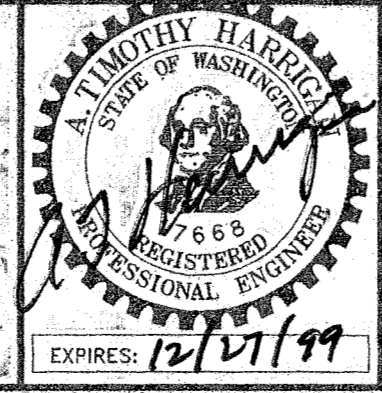
A PORTION OF SECTION 13 & 24, TOWNSHIP 31 NORTH, RANGE 5 EAST, & SECTION 19 TOWNSHIP 31 NORTH, RANGE 6 EAST, W.M. SNOHOMISH COUNTY WASHINGTON



CALL 2 DAYS BEFORE YOU DIG
1-800-424-5555

REVISED TO CONFORM WITH CONSTRUCTION RECORDS
By: VLG
Ck'd: TP
Date: 4-13-00

No.	Date	By	Ckd.	Appr.	Revision



CHS
12507 BEL-RED ROAD SUITE 101
BELLEVUE, WA 98005-2900
CHS ENGINEERS INC. TEL (425) 637-3693 FAX (425) 637-3694

Drawn By	Date	Checked By	Date
DJ/VG	2-99	TP	3-99
Designed By	Date	Approved By	Date
MD	2-99	TH	6-99

Approved for Construction
City of Arlington
Date: 7/2/99

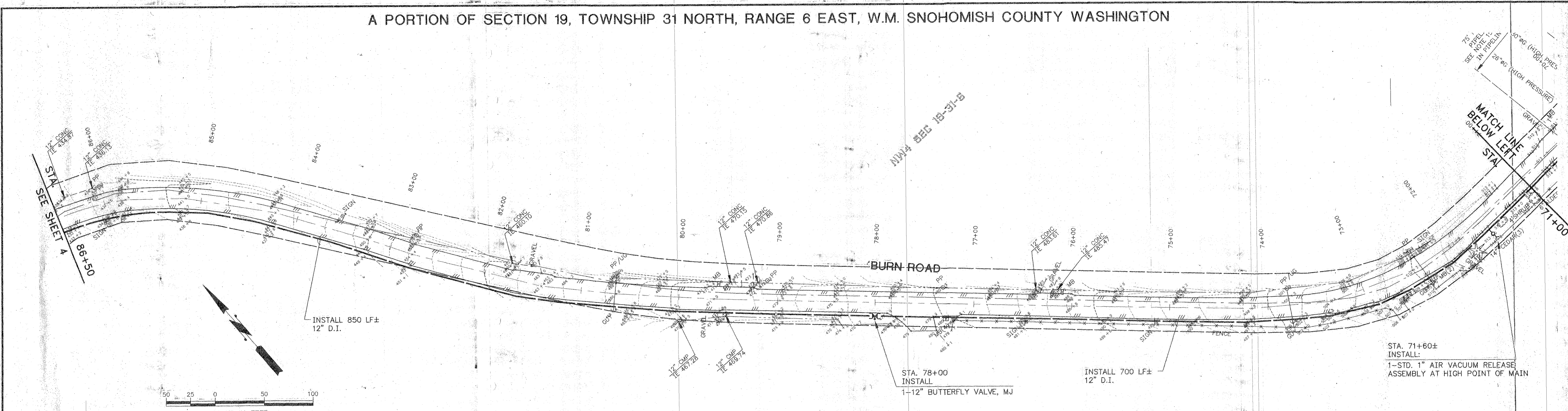
Scale:
Horiz. 1"=50'
Vert. N/A
Job No. 30803

CITY OF ARLINGTON
BURN ROAD
WATER TRANSMISSION MAIN
STA. 118+25 TO STA. 86+50

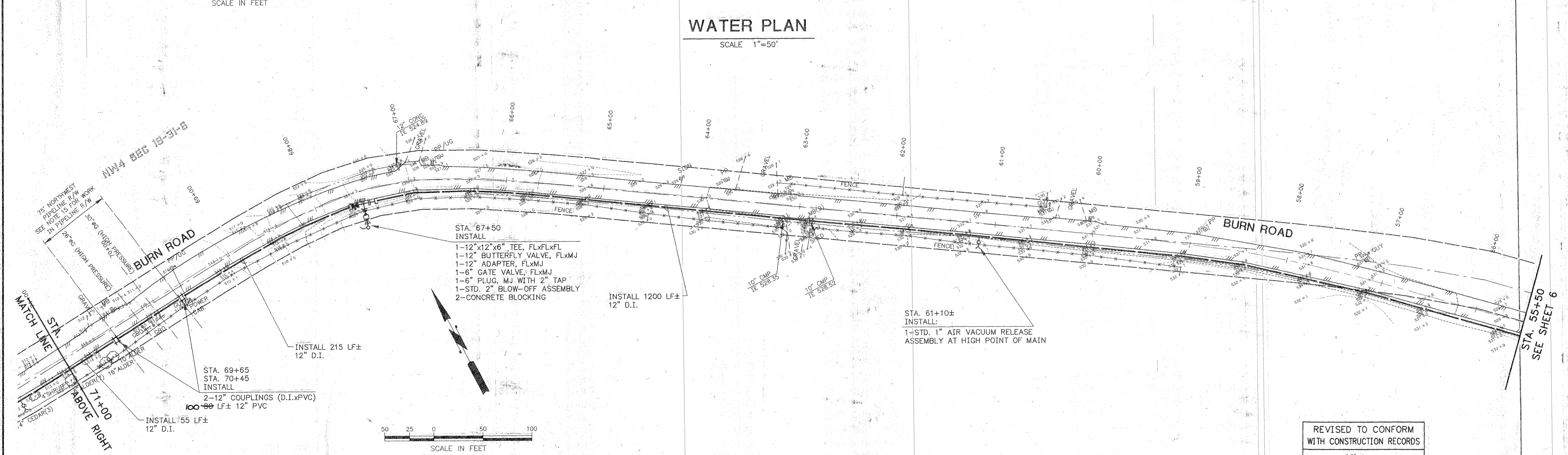
Sheet 4
Of 9

30803S114.DWG 11:50 2/2/04 7-9-99

A PORTION OF SECTION 19, TOWNSHIP 31 NORTH, RANGE 6 EAST, W.M. SNOHOMISH COUNTY WASHINGTON



WATER PLAN
SCALE 1"=50'



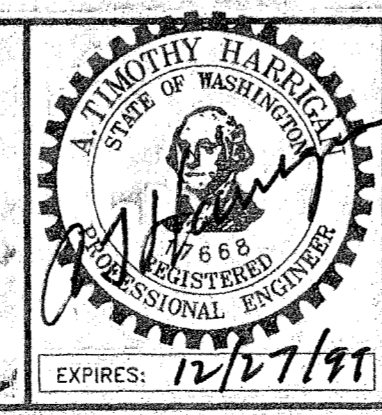
WATER PLAN
SCALE 1"=50'

REVISED TO CONFORM WITH CONSTRUCTION RECORDS
By: VLG
Ckd: TP
Date: 4-13-00

CALL 2 DAYS BEFORE YOU DIG
1-800-424-5555

30803R15.DWG 1:50 2/23/99 7-9-99

No.	Date	By	Ckd.	Appr.	Revision



CHS
12507 BEL-RED ROAD SUITE 101
BELLEVUE, WA 98005-2500
CHS ENGINEERS INC. TEL (425) 637-3693 FAX (425) 637-3894

Drawn By DJ/VG	Date 2-99	Checked By TP	Date 3-99
Designed By MD	Date 2-99	Approved By TH	Date 6-99

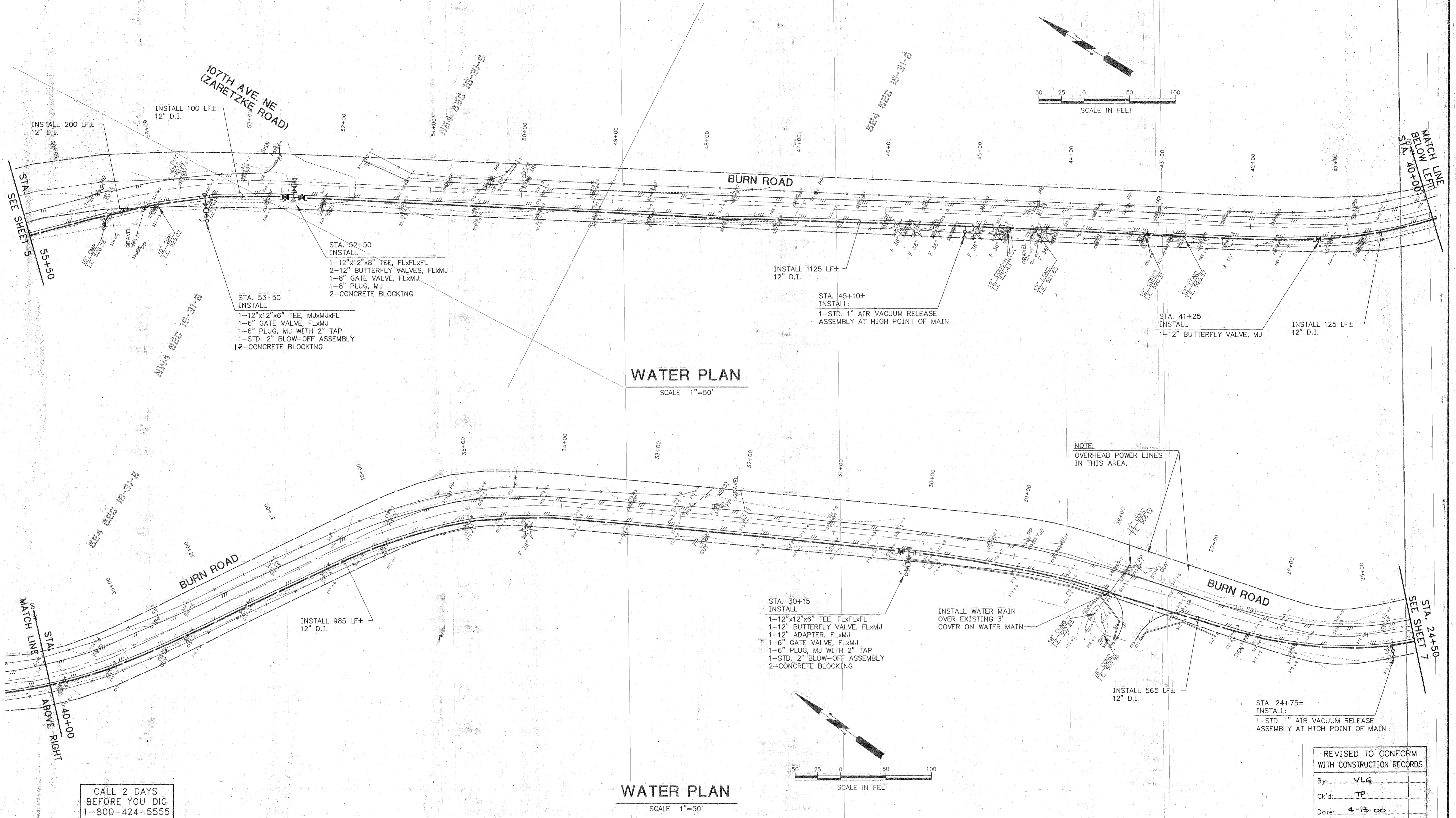
Approved for Construction
[Signature]
City of Arlington
Date: 7/21/99

Scale:
Horiz. 1"=50'
Vert. N/A
Job No.
30803

CITY OF ARLINGTON
**BURN ROAD
WATER TRANSMISSION MAIN
STA. 86+50 TO STA. 55+50**

Sheet **5**
Of **9**

A PORTION OF SECTION 19, TOWNSHIP 31 NORTH, RANGE 6 EAST, W.M. SNOHOMISH COUNTY WASHINGTON



WATER PLAN
SCALE 1"=50'

WATER PLAN
SCALE 1"=50'

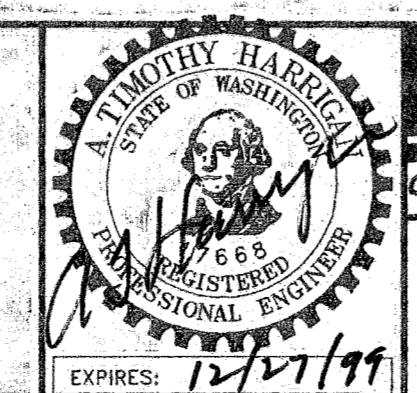
CALL 2 DAYS BEFORE YOU DIG
1-800-424-5555

NOTE:
OVERHEAD POWER LINES
IN THIS AREA.

REVISED TO CONFORM
WITH CONSTRUCTION RECORDS
By: VLG
Ck'd: TP
Date: 4-13-00

308035R16.DWG 1:50 2/24/04 7-9-99

No.	Date	By	Ckd.	Appr.	Revision



CHS
12507 BEL-RED ROAD SUITE 101
BELLEVUE, WA 98005-2500
CHS ENGINEERS INC. TEL (425) 637-3693 FAX (425) 637-3694

Drawn By DJ/VG	Date 2-99	Checked By TP	Date 3-99
Designed By MD	Date 2-99	Approved By TH	Date 6-99

EXPIRES: 12/31/99

Approved for Construction

[Signature] 7/21/99
City of Arlington Date

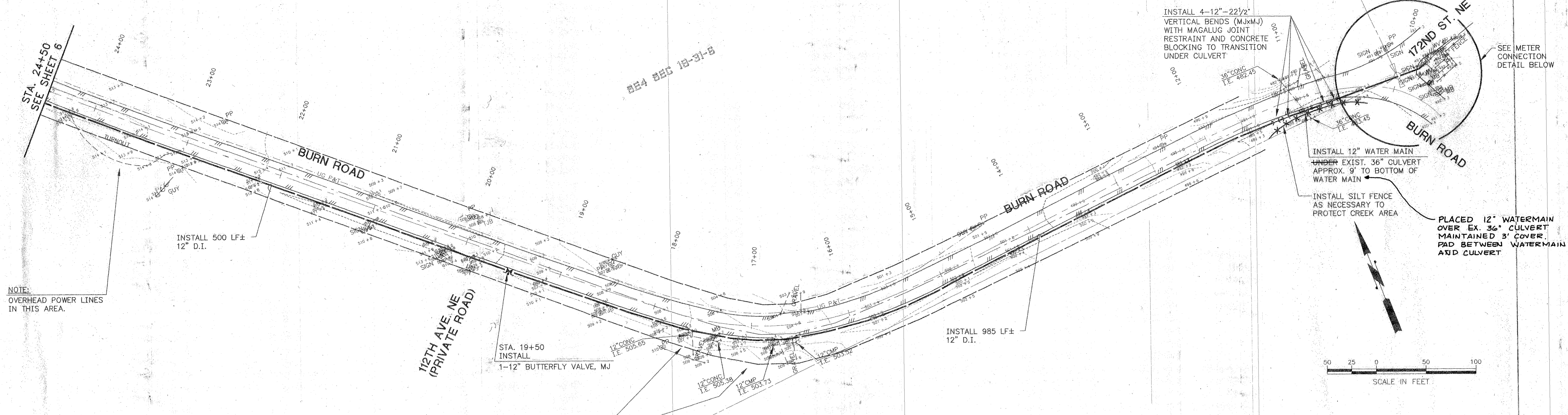
Scale:
Horiz. 1"=50'
Vert. N/A
Job No. 30803

CITY OF ARLINGTON

BURN ROAD
WATER TRANSMISSION MAIN
STA. 55+50 TO STA. 24+50

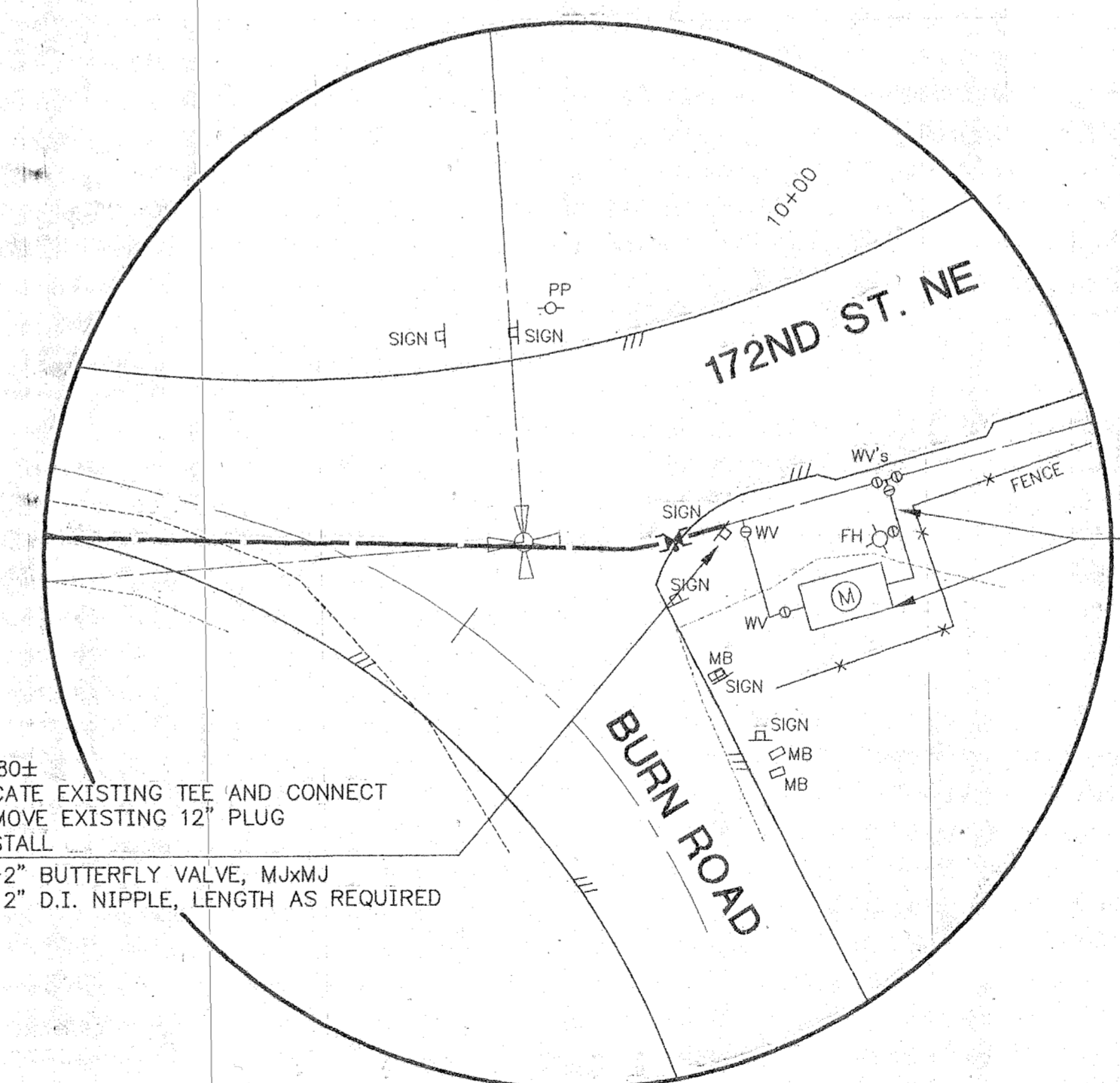
Sheet 6
Of 9

A PORTION OF SECTIONS 19 & 30, TOWNSHIP 31 NORTH, RANGE 6 EAST, W.M. SNOHOMISH COUNTY WASHINGTON



WATER PLAN

SCALE 1"=50'



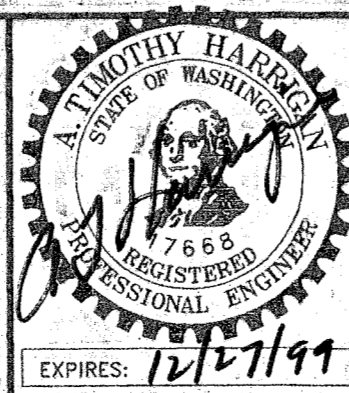
METER CONNECTION DETAIL

REVISED TO CONFORM WITH CONSTRUCTION RECORDS	
By:	VLG
Ck'd:	TP
Date:	4-13-00

CALL 2 DAYS BEFORE YOU DIG
1-800-424-5555

30803SH17.DWG 1:50 22x34 7-9-99

No.	Date	By	Ckd.	Appr.	Revision



CHS ENGINEERS INC.
12507 BEL-RED ROAD SUITE 101
BELLEVUE, WA 98005-2500
TEL (425) 637-3693 FAX (425) 637-3694

Drawn By DJ/VG	Date 2-99	Checked By TP	Date 3-99
Designed By MD	Date 2-99	Approved By TH	Date 6-99

Approved for Construction
[Signature]
City of Arlington
Date: 7/21/99

Scale:
Horiz: AS NOTED
Vert: N/A
Job No.
30803

CITY OF ARLINGTON
**BURN ROAD
WATER TRANSMISSION MAIN
STA. 24+50 TO STA. 10+00**

Sheet 7
Of 9

GENERAL NOTES

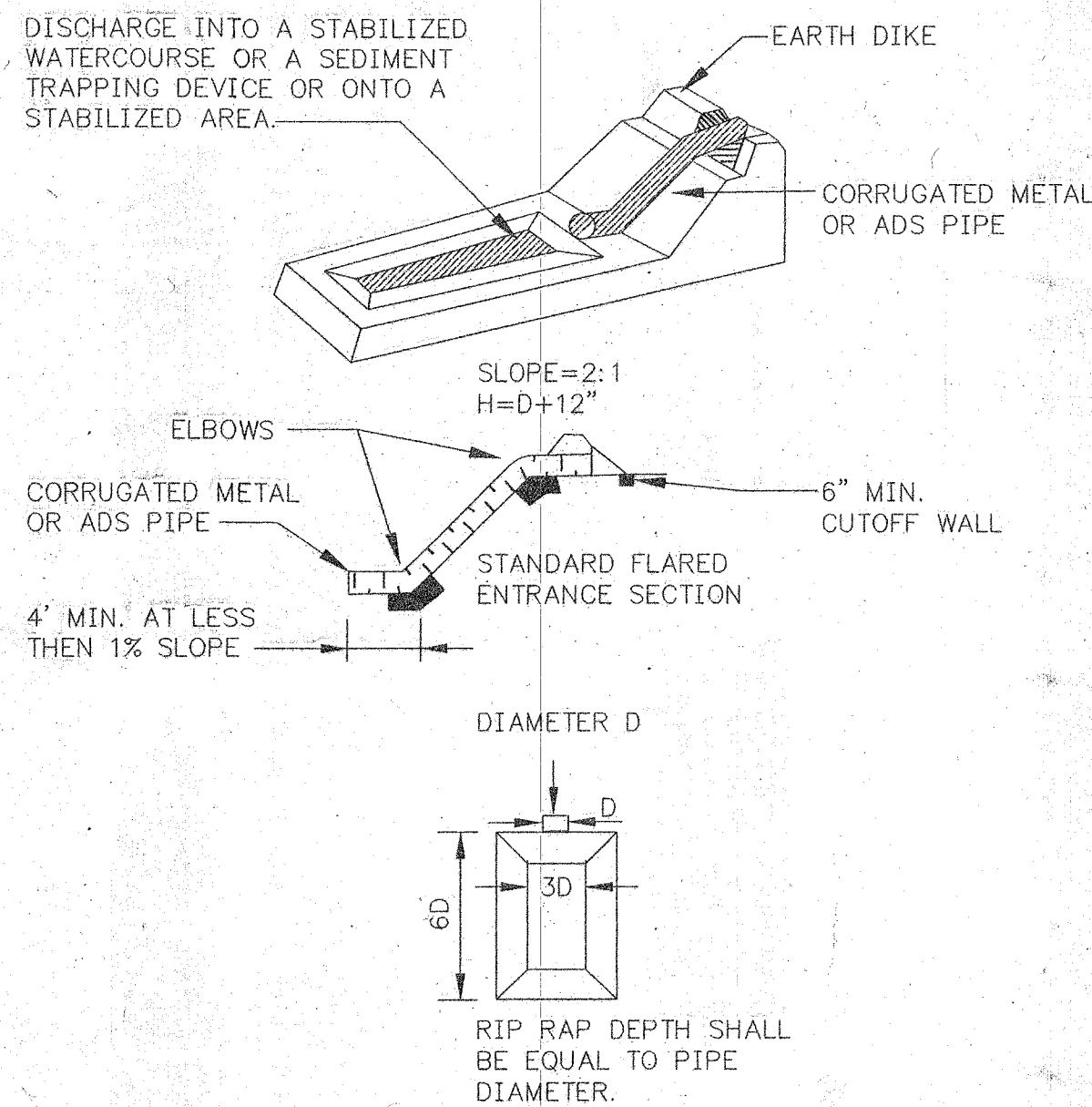
- ALL AREAS DISTURBED WHICH WERE ORIGINALLY COVERED WITH GRASS SHALL BE HYDROSEEDED, UNLESS OTHERWISE DIRECTED. ALL AREAS DISTURBED WHICH WERE ORIGINALLY COVERED WITH GROUND COVER SHALL BE RESTORED BY PLACEMENT OF FAST-GROWING GRASS SEED AND EROSION CONTROL MATERIAL, IF NECESSARY, UNLESS OTHERWISE DIRECTED.
- THE CONTRACTOR SHALL PROVIDE EROSION AND SEDIMENTATION CONTROL MEASURES AS REQUIRED BY CITY OF ARLINGTON AND SNOHOMISH COUNTY TO PREVENT SILTATION OF STORM DRAINAGE SYSTEMS OR NATURAL WATER COURSES. FACILITIES SHALL BE MAINTAINED, MOVED OR UPGRADED AS CONSTRUCTION PROGRESSES AND SHALL BE DEPENDENT ON WEATHER AND CLIMATIC CONDITIONS. MINIMUM FACILITIES SHALL INCLUDE SILT FENCES DOWNSTREAM OF CONSTRUCTION, COVERING OF STOCKPILED MATERIALS, FILTER FABRIC OR STRAW BALES DAMS JUTE MATTING OR OTHER SLOPE PROTECTION MATERIAL. INSTALLATION SHALL BE IN ACCORDANCE WITH THE MANUFACTURER'S RECOMMENDATIONS AND WITH GOOD CONSTRUCTION PRACTICES AND SHALL BE INSPECTED DAILY TO ASSURE PROPER OPERATION. ALL DISTURBED AREAS SHALL BE STABILIZED AGAINST EROSION PROMPTLY AND THOROUGHLY DURING PERIODS OF WET WEATHER WHEN WORK IS NOT BEING PERFORMED.
- THE MITIGATION MEASURES TO BE UNDERTAKEN WILL CONSIST OF THE INSTALLATION OF SILT FENCING AROUND AREAS OF THE WETLAND AND STREAMS THAT MAY BE SUBJECT TO IMPACTS DURING CONSTRUCTION ACTIVITIES. TEMPORARY STRAW BALE BARRIERS WILL BE INSTALLED WHERE THE WETLAND FLOWS INTO THE STREAM. DURING CONSTRUCTION IT IS EXPECTED TO ENCOUNTER GROUNDWATER SO EROSION AND SEDIMENTATION CONTROL MEASURES TO INCLUDE STRAW BALE BARRIERS, AND BARRIERS, GRAVEL FILTER AND/OR A SEDIMENT POND TO PREVENT SILT-LADEN WATER FROM ENTERING THE STREAM PRIOR TO THE RETURN TO THE STREAM CHANNEL.
- DURING CONSTRUCTION IN THE RIGHT-OF-WAY THE CONTRACTOR WILL BE REQUIRED TO CLEAN THE PAVED SURFACES TO MINIMIZE THE IMPACTS TO TRAFFIC AND TO PREVENT SEDIMENTATION FROM ENTERING THE STREAMS OR WETLAND. FILTER FABRIC FENCE INLET FILTERS WILL BE INSTALLED IN DITCHES TO PREVENT SILT-LADEN RUNOFF FROM ENTERING CULVERTS. WHEN CONSTRUCTION IS COMPLETE THE CONTRACTOR WILL BE REQUIRED TO CLEAN ALL DITCHES IN THE CONSTRUCTION AREA.
- ALL WATER REMOVED FROM TRENCHES WILL NOT BE DIRECTED ONTO SURROUNDING SLOPES. PRIOR TO THE CONVEYANCE TO THE STORM WATER SYSTEM SEDIMENTATION CONTROL MEASURES WILL BE USED, INCLUDING STRAW BALE BARRIERS, AND SILT FENCE TO CONTROL THE VELOCITY OF THE WATER AND TO PREVENT SEDIMENT-LADEN WATER FROM ENTERING THE STORM WATER CONVEYANCE SYSTEM.
- SENSITIVE AREAS (SLOPES, STREAMS AND WETLANDS) WILL BE RE-VEGETATED AS SOON AS POSSIBLE AFTER CONSTRUCTION ACTIVITIES TO MINIMIZE EROSION IMPACTS TO THOSE AREAS. RE-VEGETATION WILL CONSIST OF NATURAL VEGETATION (IE) SCRUB SHRUB AND CONIFER (CEDAR, SPRUCE) AND SHALL BE PLANTED TO THE PERMITTING AGENCY STANDARDS.
- THE CONTRACTOR WILL BE RESPONSIBLE TO INSTALL EROSION AND SEDIMENTATION CONTROL FENCE, STRAW BALE BARRIERS, DRAIN INLET PROTECTION AND SLOPE DRAINS AS REQUIRED TO MINIMIZE EROSION ON AND OFF THE SITE AND SHALL CONFORM TO THE PERMITTING AGENCY STANDARDS.
- THE CONTRACTOR WILL BE RESPONSIBLE TO STABILIZE EXPOSED AREAS AND SOIL STOCKPILES AS FOLLOWS:
 - FROM OCTOBER 1 TO APRIL 30, NO SOIL MAY REMAIN EXPOSED FOR MORE THAN 2 DAYS.
 - FROM MAY 1 TO SEPTEMBER 30, NO SOIL MAY REMAIN EXPOSED FOR MORE THAN SEVEN DAYS.
- SOIL STOCKPILES WILL BE STABILIZED OR PROTECTED WITH SILT FENCING AND COVERED WITH PLASTIC.
- APPROVED TEMPORARY VEGETATIVE COVER SHALL BE USED TO PROVIDE TEMPORARY COVER MEASURES WHEN REQUIRED BY SITE CONDITIONS. AT A MINIMUM, EXPOSED AREAS WILL BE COVERED BY MULCH, SOD OR SEEDING COVERED WITH WOOD CELLULOSE FIBER AT 1 TON PER ACRE.
- THE CONTRACTOR WILL BE REQUIRED TO PROVIDE PERMANENT VEGETATIVE COVER BOTH DURING AND AFTER COMPLETION OF CONSTRUCTION ACTIVITIES. PERMANENT COVER MEASURES WILL INCLUDE:
 - PRESERVING NATURAL VEGETATION
 - PERMANENT SEEDING/HYDROSEEDING
 - SODDING
 - LANDSCAPE REPLACEMENT
- THE CONTRACTOR WILL BE RESPONSIBLE FOR EROSION AND SEDIMENTATION CONTROL MEASURES TO PREVENT OR MINIMIZE THE TRANSPORT OF SEDIMENTATION ONTO PAVED SURFACES DURING CONSTRUCTION ACTIVITIES. UNSURFACED ENTRANCES, ROADS, PARKING AND STAGING AREA USED FOR CONSTRUCTION ACTIVITIES SHALL BE STABILIZED TO MINIMIZE EROSION AND TRACKING OF SEDIMENT OFF-SITE. STABILIZED CONSTRUCTION ENTRANCES SHALL BE INSTALLED AS THE FIRST STEP IN CLEARING AND GRADING. A STABILIZED PAD OF ROCK SPALLS SHALL BE USED AT THE ENTRANCES TO CONSTRUCTION SITES. THE CONTRACTOR WILL CLEAN PAVED SURFACES AT THE END OF EACH WORK DAY OR AS DIRECTED BY THE OWNER.
- THE CONTRACTOR SHALL BE RESPONSIBLE TO INSTALL FLOOD CONTROL MEASURES TO PREVENT FLOODING OF THE ROADS AND RIGHT-OF-WAY. FLOOD CONTROL WILL INCLUDE STRAW BALE BARRIERS AND OTHER APPROVED MEASURES TO DIRECT THE FLOW AND VELOCITY OF WATER TO PREVENT FLOODING OF ROADS AND RIGHT-OF-WAY.
- SILTATION BARRIERS SHALL BE INSPECTED IMMEDIATELY AFTER EACH RAINFALL AND AT LEAST DAILY DURING PROLONGED RAINFALL. CLOSE ATTENTION SHALL BE PAID TO THE REPAIR OF DAMAGED BALES, END RUNS AND UNDERCUTTING UNDERNEATH BALES. NECESSARY REPAIRS TO BARRIERS OR REPLACEMENT OF BALES SHALL BE ACCOMPLISHED PROMPTLY. SEDIMENT DEPOSITS MUST BE REMOVED WHEN THE LEVEL OF DEPOSITION REACHES APPROXIMATELY ONE HALF OF THE BARRIER. ANY SEDIMENT DEPOSITS REMAINING IN PLACE AFTER THE STRAW BALE BARRIER IS NO LONGER REQUIRED SHALL BE DRESSED TO CONFORM TO THE EXISTING GRADE, PREPARED AND SEEDED.
- CONSTRUCTION ACCEPTANCE WILL BE SUBJECT TO A WELL ESTABLISHED GROUND COVER THAT FULFILLS THE REQUIREMENT OF THE ENTITY WITH JURISDICTION OVER THE JOB. (CITY OF ARLINGTON AND SNOHOMISH COUNTY)

ALL AREAS OUTSIDE OF THE CRUSHED ROCK SHOULDER SHALL BE SEEDED WITH A PERENNIAL GROUND COVER GRASS TO MINIMIZE EROSION. GRASS SEEDING WILL BE DONE USING AN APPROVED HYDROSEEDER OR BY HAND SEEDING AND PLACEMENT OF STRAW MULCH AS APPROVED BY THE ENTITY WITH JURISDICTION OVER THE RESTORATION OF THE SHOULDERS.

PREPARATION OF SURFACE: ALL AREAS TO BE SEEDED SHALL BE CULTIVATED TO THE SATISFACTION OF THE DISTRICT INSPECTOR. THIS IS TO BE ACCOMPLISHED BY DISCING, RAKING, HARROWING OR OTHER ACCEPTABLE MEANS.

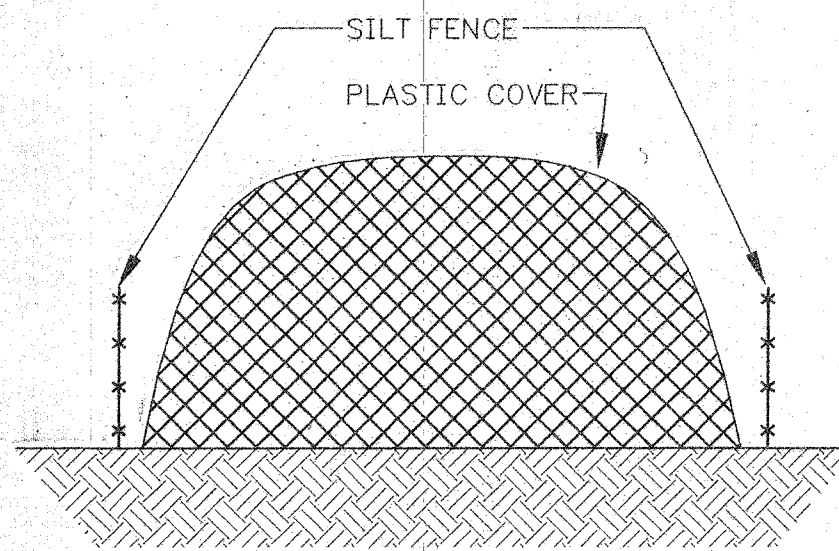
IMMEDIATELY FOLLOWING FINISH GRADING, PERMANENT VEGETATION SHALL BE APPLIED AS REQUIRED BY THE APPROPRIATE GOVERNMENTAL AGENCY AS FOLLOWS:

SNOHOMISH COUNTY MIX
 20% ANNUAL RYE
 40% PERENNIAL RYE
 40% PI DUTCH WHITE CLOVER
 MULCH RATE = 1500 LBS/ACRE
 FERTILIZER RATE (10-20-20) = 400 LBS/ACRE
 SEED RATE MIX = 80 LBS/ACRE



PIPE SLOPES DRAIN

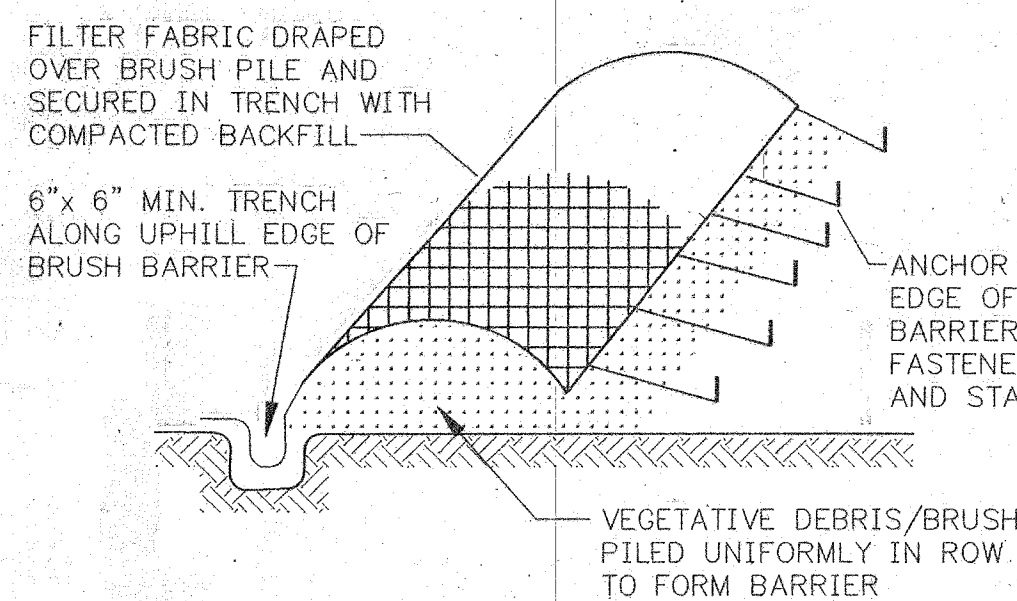
NOT TO SCALE



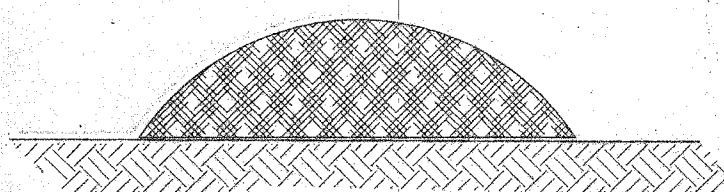
SILT FENCING WILL BE PLACED AROUND STOCKPILED DIRT. STOCKPILED DIRT SHALL BE COVERED WITH PLASTIC IF STOCKPILE IS LEFT FOR MORE THAN 2 DAYS FROM OCTOBER 1 TO APRIL 30 AND MORE THAN 7 DAYS FROM MAY 1 TO SEPTEMBER 30.

STOCKPILE EROSION CONTROL DETAIL

NOT TO SCALE



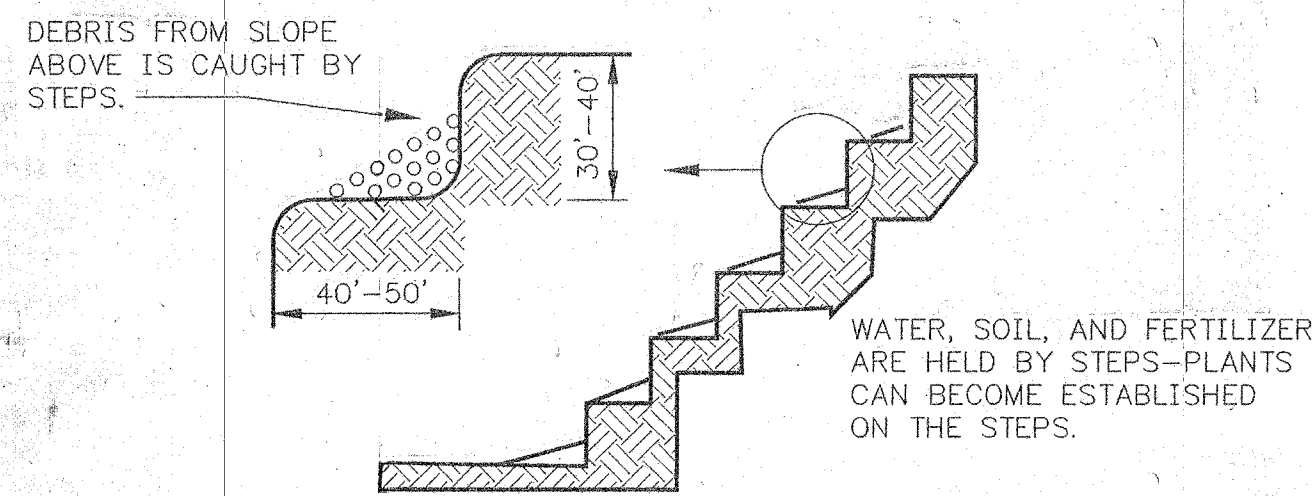
BRUSH BARRIER



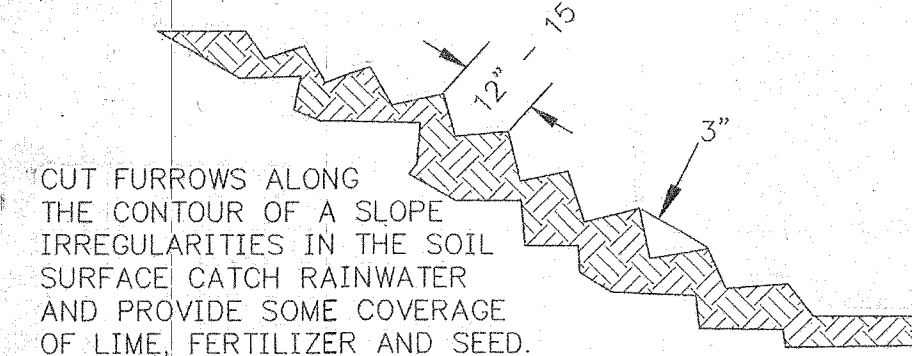
CROSS SECTION OF GRAVEL FILTER BERM

BRUSH BARRIER AND GRAVEL FILTER BERM

NOT TO SCALE



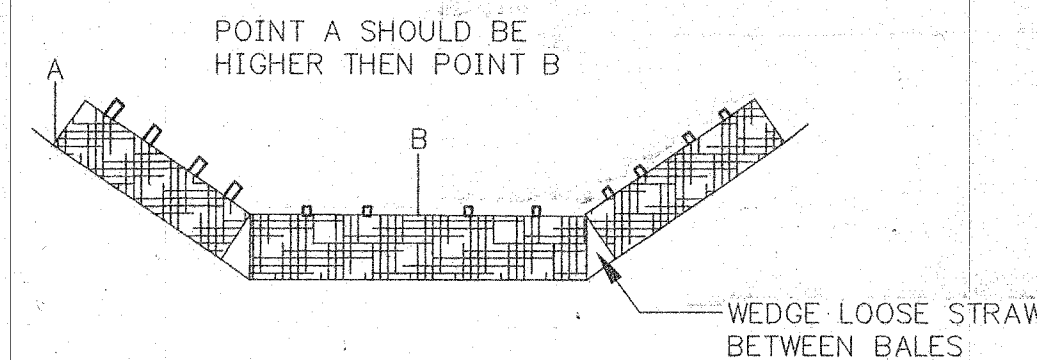
STAIR STEPPING CUT SLOPES



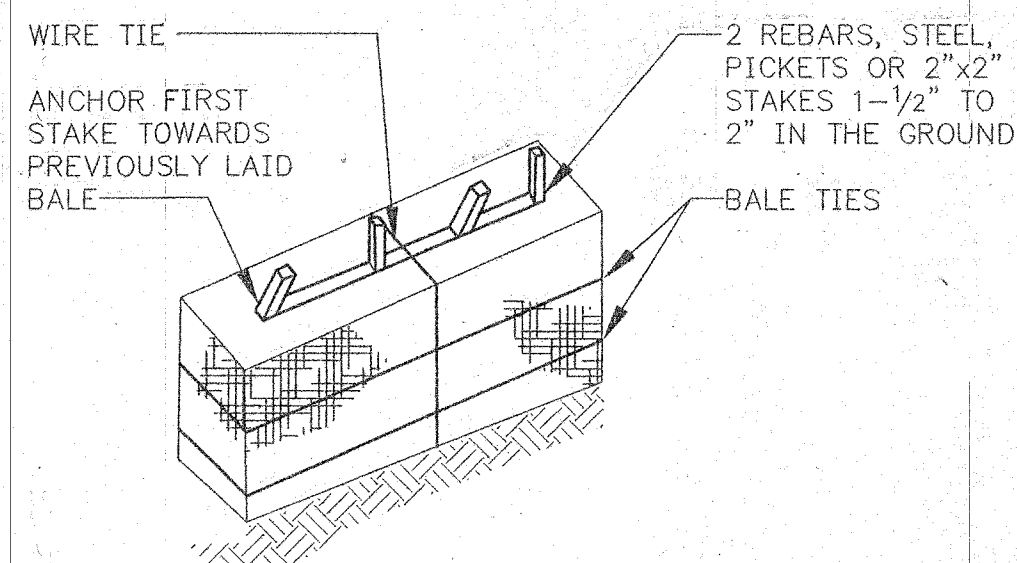
GROOVING SLOPES

STAIR STEPPING CUT GROOVING SLOPES

NOT TO SCALE



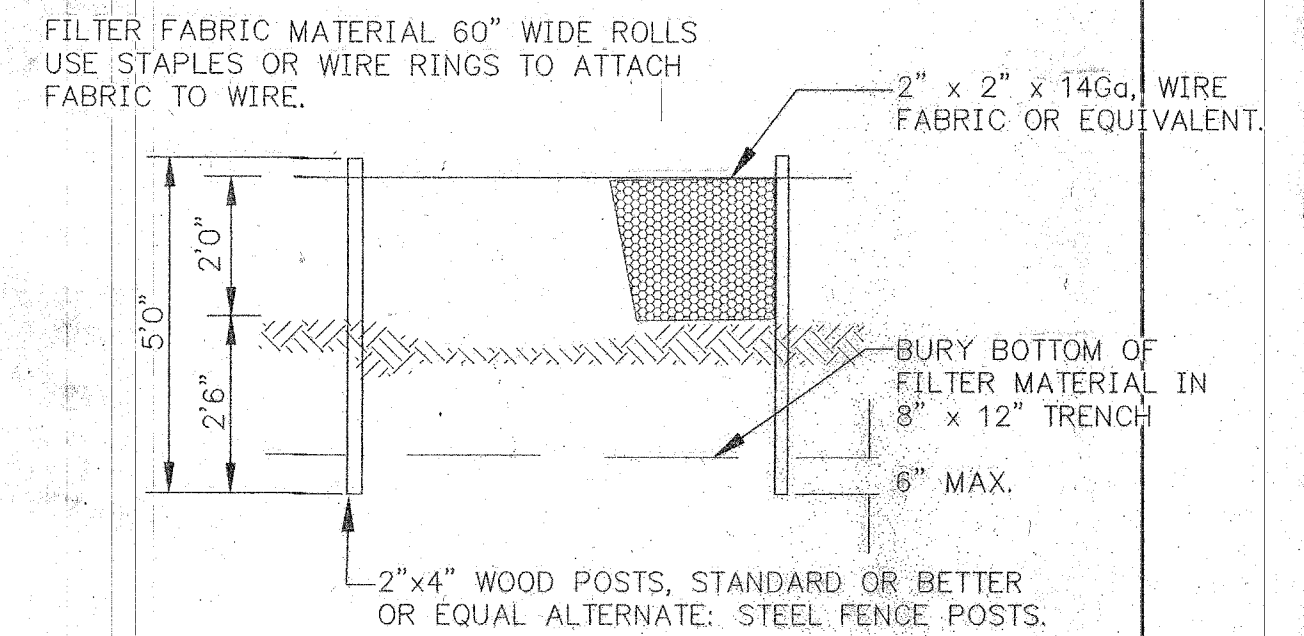
PROPER PLACEMENT OF STRAW BARRIER ON DRAINAGE WAY



ANCHORING BALES

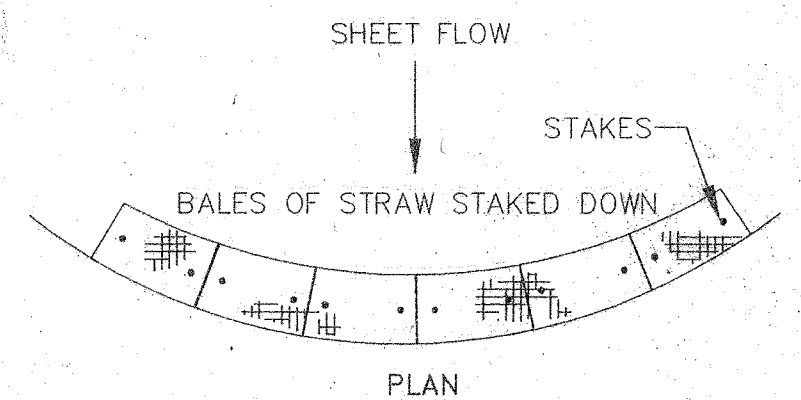
STRAW AND HAY BARRIERS

NOT TO SCALE

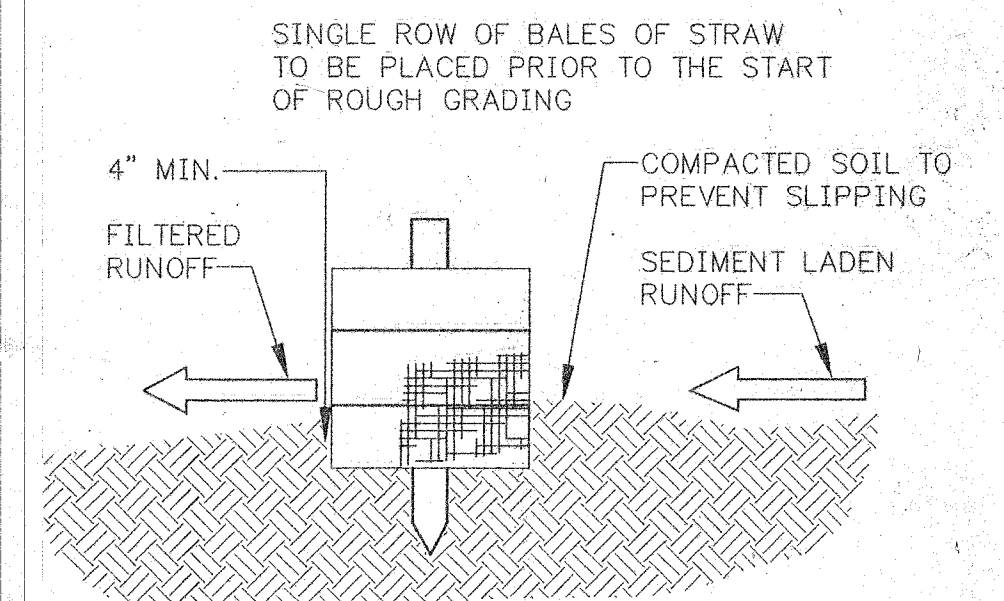


FILTER FABRIC FENCE DETAIL

NOT TO SCALE



PLAN



CROSS-SECTION OF A PROPERLY INSTALLED STRAW BALE

STRAW AND HAY BALE BARRIERS

NOT TO SCALE

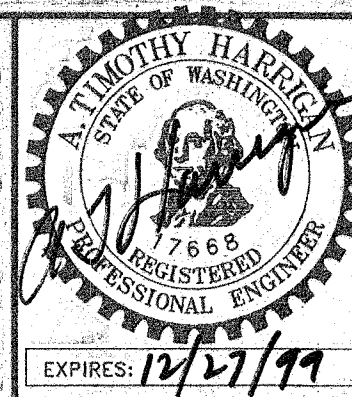
REVISED TO CONFORM WITH CONSTRUCTION RECORDS

By: VLG
 Ck'd: TP
 Date: 4-13-00

CALL 2 DAYS BEFORE YOU DIG
 1-800-424-5555

30803SHEDWG 1:1 22x34 7-8-99

No.	Date	By	Ckd.	Appr.	Revision



CHS
 CHS ENGINEERS INC. TEL (425) 637-3693 FAX (425) 637-3694
 12507 BEL-RED ROAD SUITE 101
 BELLEVUE, WA 98005-2500

Drawn By	Date	Checked By	Date
VLG	7-99	TP	7-99
Designed By	Date	Approved By	Date
TP	7-99	ATH	7-99

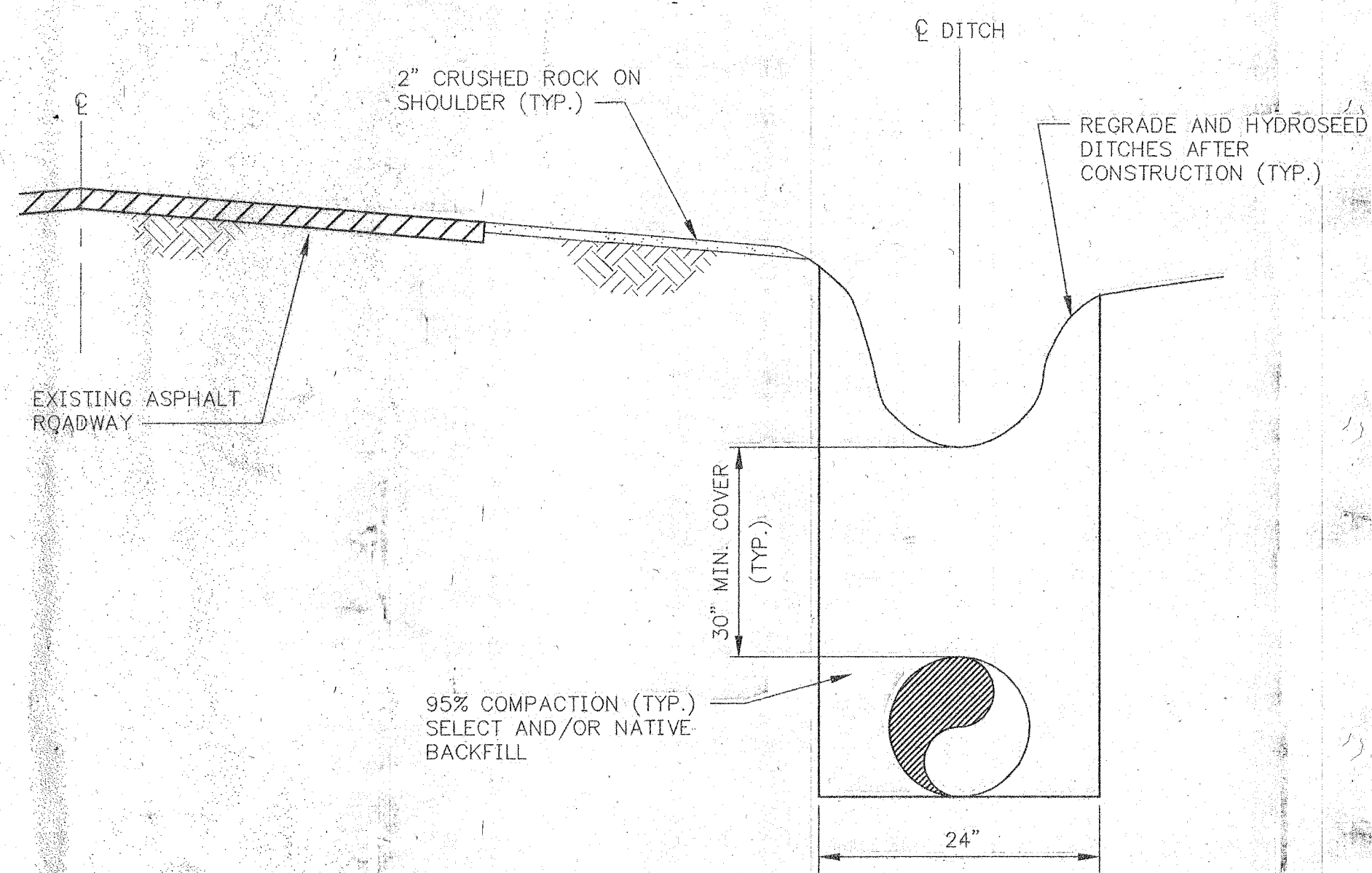
Approved for Construction

 City of Arlington 7/2/99 Date

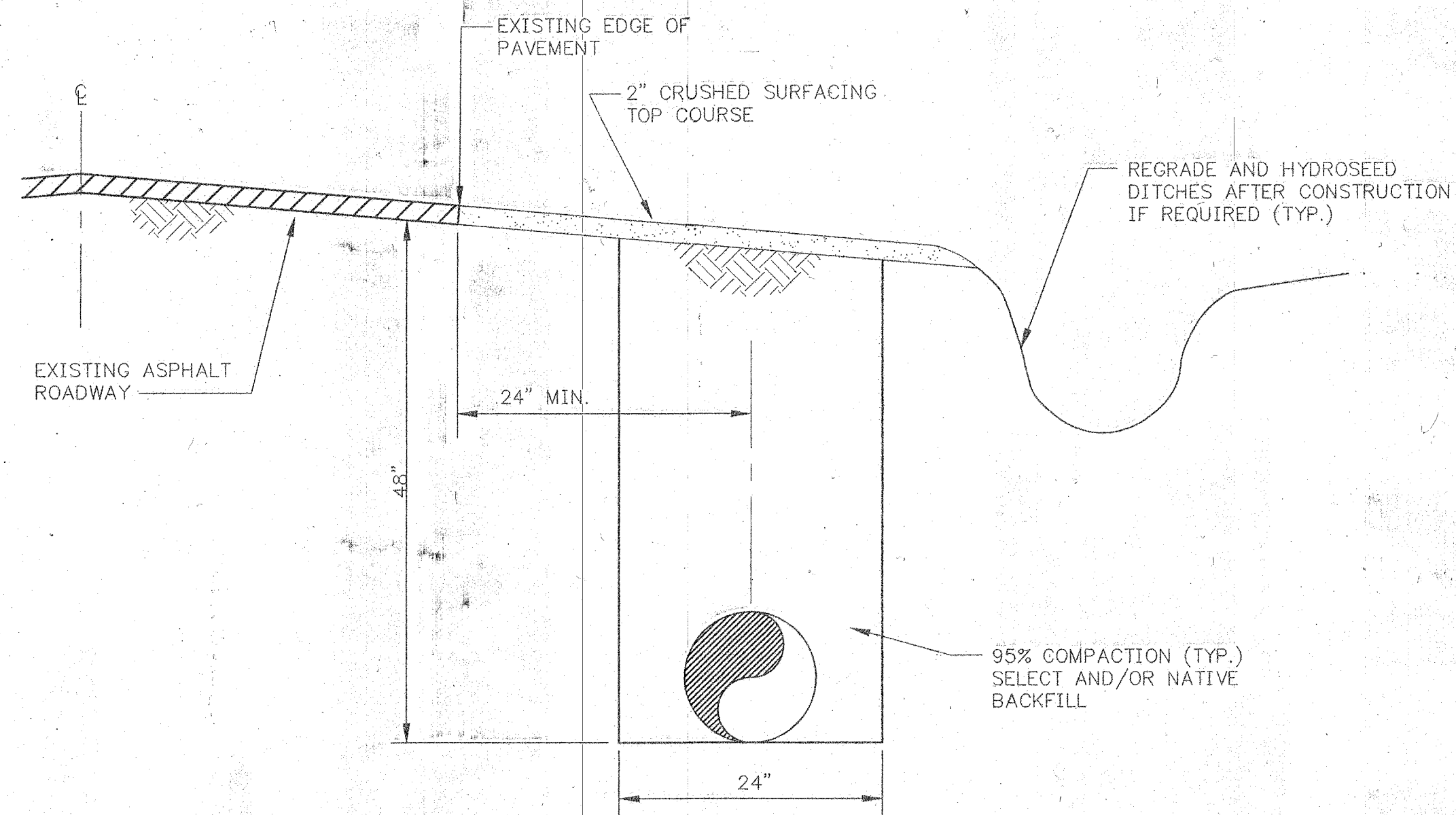
Scale:
 Horiz. 1=1
 Vert. N/A
 Job No. 30803

CITY OF ARLINGTON
BURN ROAD
WATER TRANSMISSION MAIN
GENERAL NOTES AND DETAILS

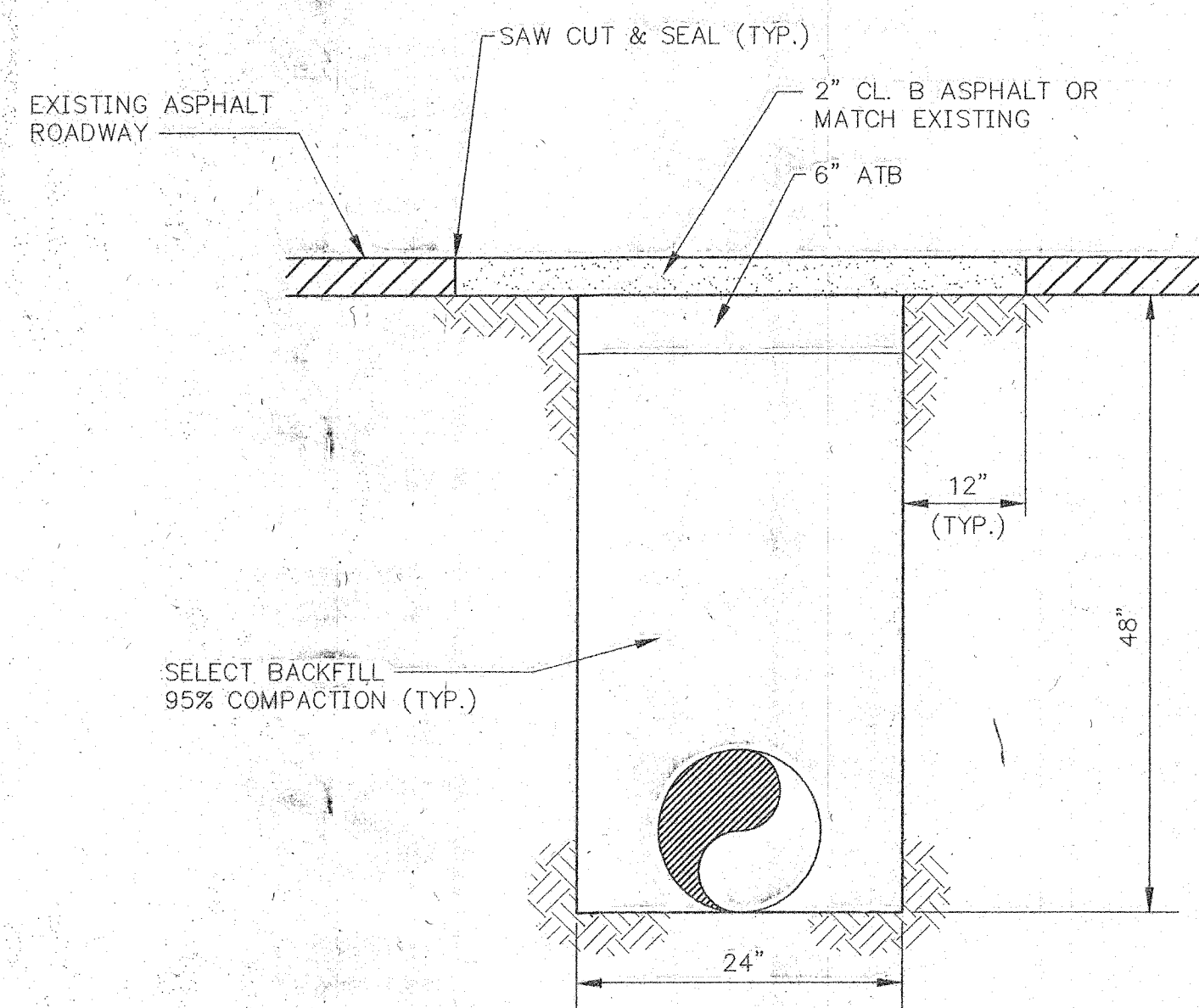
Sheet **8**
 Of **9**



TYPICAL CONSTRUCTION WITHIN DITCH LINE (IF REQUIRED)
NOT TO SCALE



TYPICAL CONSTRUCTION WITHIN CRUSHED ROCK ROADWAY SHOULDER
NOT TO SCALE



TYPICAL ASPHALT ROAD CROSSING DETAIL
NOT TO SCALE

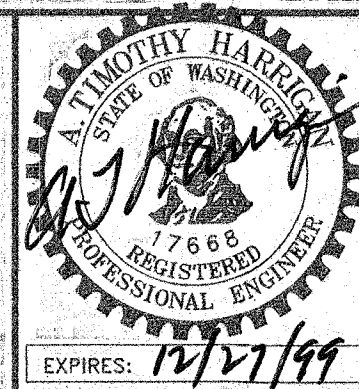
NOTE:
OVERLAY REQUIRED BETWEEN CROSSINGS
WHEN LESS THAN 250 FEET BETWEEN THEM.
ALSO WHEN CROSSING AT INTERSECTIONS.

REVISED TO CONFORM
WITH CONSTRUCTION RECORDS
By: VLS
Ck'd: TP
Date: 4-13-00

CALL 2 DAYS
BEFORE YOU DIG
1-800-424-5555

30803SHTB.DWG 1:1 2/24/99 7-8-99

No.	Date	By	Ckd.	Appr.	Revision



CHS
12507 BEL-RED ROAD SUITE 101
BELLEVUE, WA 98005-2500
CHS ENGINEERS INC. TEL (425) 637-3693 FAX (425) 637-3694

Drawn By	Date	Checked By	Date
VLG	7-99	TP	7-99
Designed By	Date	Approved By	Date
TP	7-99	ATH	7-99

Approved for Construction

[Signature] 7/21/99
City of Arlington Date

Scale:
Horiz. 1=1
Vert. N/A
Job No. 30803

CITY OF ARLINGTON
BURN ROAD
WATER TRANSMISSION MAIN
TRENCH SECTIONS & RESTORATION DETAILS

Sheet **9**
Of **9**