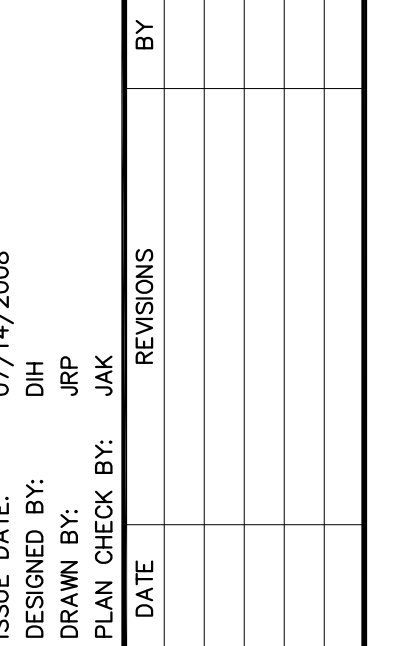


WASHINGTON  
425.252.2826 phone  
425.252.9551 fax

1721 Hewitt Avenue  
Fourth Floor  
Everett, WA 98201

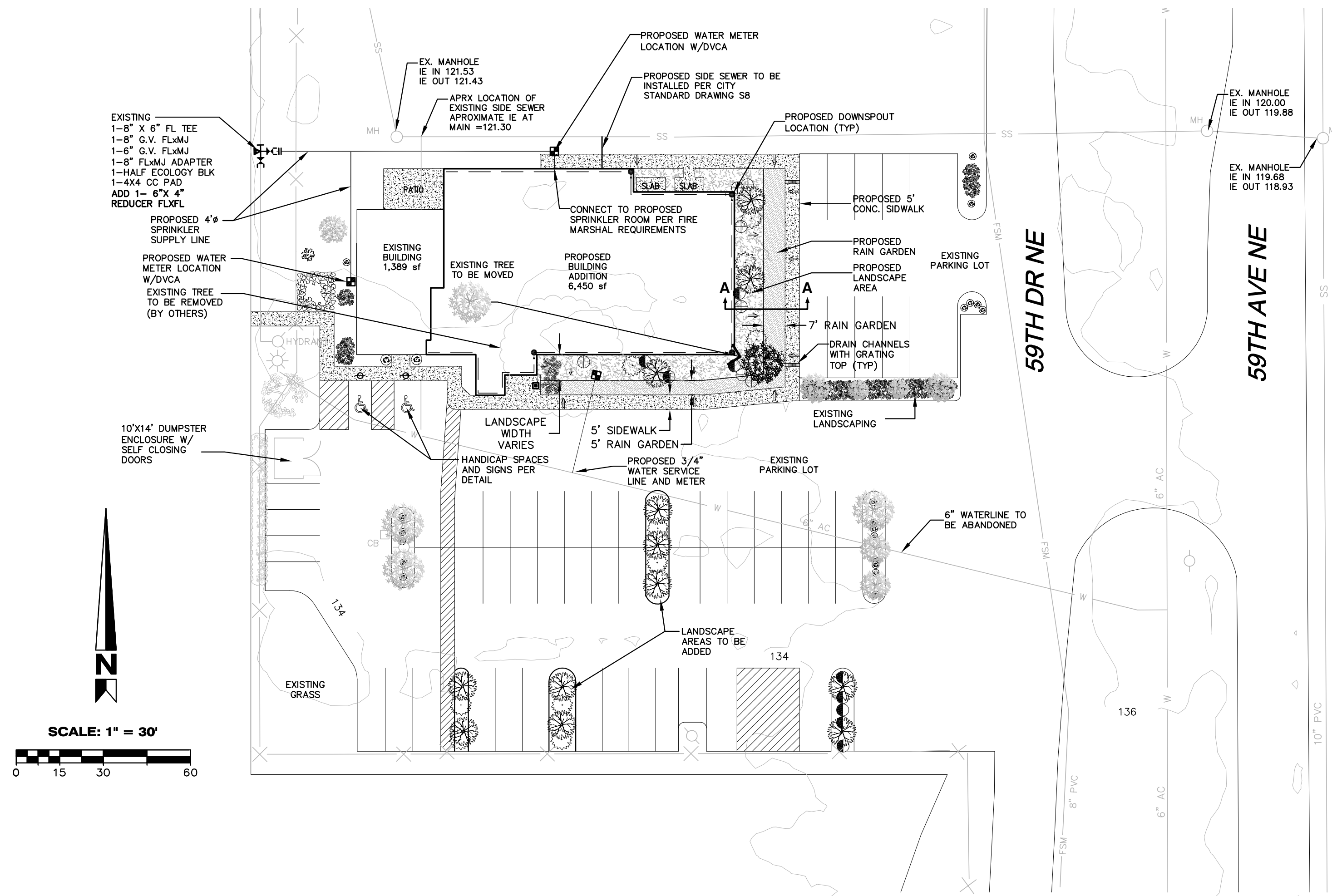
OREGON  
541.988.1862 phone  
541.988.1863 fax  
  
150 North 7th Street  
Springfield, OR 97477



**CONSTRUCTION PLANS  
ARLINGTON AIRPORT  
ADMINISTRATION BUILDING  
SITE DRAINAGE PLAN**

## DRAINAGE

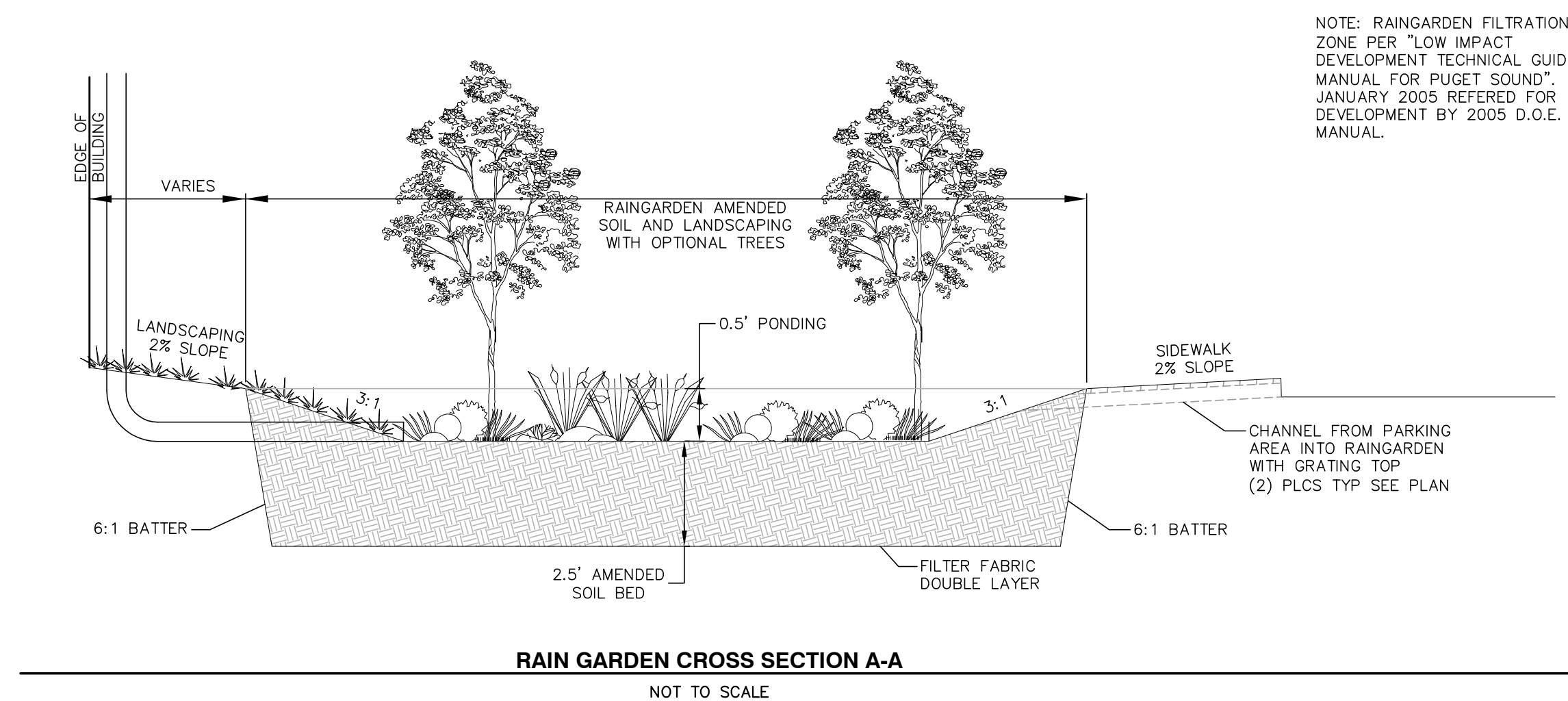
JOB NO. <b>2098-08</b>	<b>P1.0</b>	REF: PRKAA
---------------------------	-------------	------------



SCALE 1"=30'

1. ALL STORM SEWER PIPE SHALL CONFORM WITH SECTION 5 OF ARLINGTON PUBLIC WORKS CONSTRUCTION STANDARDS AND SPECIFICATIONS.
2. ALL PIPE SHALL BE PLACED ON STABLE EARTH, OR IF IN THE OPINION OF THE INSPECTOR THE EXISTING FOUNDATION IS UNSATISFACTORY, THEN IT SHALL BE EXCAVATED BELOW GRADE AND BACK-FILLED WITH A GRAVEL MATERIAL TO SUPPORT THE PIPE.
3. THE BACK FILL SHALL BE PLACED EQUALLY ON BOTH SIDES OF THE PIPE IN LAYERS WITH A LOOSE AVERAGE DEPTH OF 6", MAXIMUM DEPTH 8"-9", THOROUGHLY STAMPING EACH LAYER, THESE COMPACTED LAYERS MUST EXTEND FOR ONE DIAMETER ON EACH SIDE OF THE PIPE OR TO THE SIDE OF THE TRENCH, MATERIALS TO COMPLETE THIS FILL OVER PIPE SHALL BE THE SAME AS DESCRIBED. (REFER TO WSDOT STANDARD SPECIFICATIONS 7-04.3 (3) AND 2-03.2(14)(C), METHOD B & C).
4. CATCH BASIN OFFSETS ARE MEASURED TO CENTER OF GRATE.
5. ALL CATCH BASINS SHALL BE TYPE 1 PER SD 2, EXCEPT AS OTHERWISE NOTED.
6. ALL CATCH BASINS WITH A DEPTH OVER 5.0 FEET TO THE FLOW LINE SHALL BE A TYPE II CB OR LARGER (MANHOLE).
7. THE CONTRACTOR SHALL BE RESPONSIBLE FOR ADJUSTING ALL MANHOLE, INLET AND CATCH BASIN FRAMES AND GRATES TO GRADE JUST PRIOR TO POURING CURBS AND PAVING.
8. CATCH BASIN FRAME AND GRATES SHALL BE OLYMPIC FOUNDRY MODEL 5435, LOCKING TYPE OR EQUAL.
9. UNLESS OTHERWISE NOTED, ALL STORM SEWER PIPE SHALL BE CORRUGATED POLYETHYLENE PIPE; THE MATERIAL SUPPLIED UNDER THIS SPECIFICATION SHALL BE HIGH-DENSITY CORRUGATED POLYETHYLENE SMOOTH INTERIOR PIPE AND SHALL BE MANUFACTURED IN CONFORMITY WITH THE LATEST AASHTO SPECIFICATIONS OR M 294 TYPE S AND THE MATERIAL COMPOUND SHALL CONFORM TO AASHTO M 294. COUPLERS SHALL COVER NOT LESS THAN ONE FULL CORRUGATION ON EACH ANNUAL SECTION OF PIPE AND PASS THE WSDOT STANDARD SPECIFICATION SECTION 7-04.3(4)D LOW PRESSURE AIR TEST FOR STORM SEWERS.
10. GALVANIZED STEEL PIPE SHALL HAVE TYPE 1 ASPHALT COATING, ALUMINIZED PIPE DOES NOT REQUIRE COATING.
11. STORM WATER RETENTION/DETENTION FACILITIES, STORM DRAINAGE PIPE AND CATCH BASINS SHALL BE FLUSHED AND CLEANED PRIOR TO ARLINGTON PUBLIC WORKS ACCEPTANCE.

SCALE 1"=30'



NOTE: RAINGARDEN FILTRATION  
ZONE PER "LOW IMPACT  
DEVELOPMENT TECHNICAL GUIDENCE  
MANUAL FOR PUGET SOUND".  
JANUARY 2005 REFERED FOR  
DEVELOPMENT BY 2005 D.O.E.  
MANUAL.