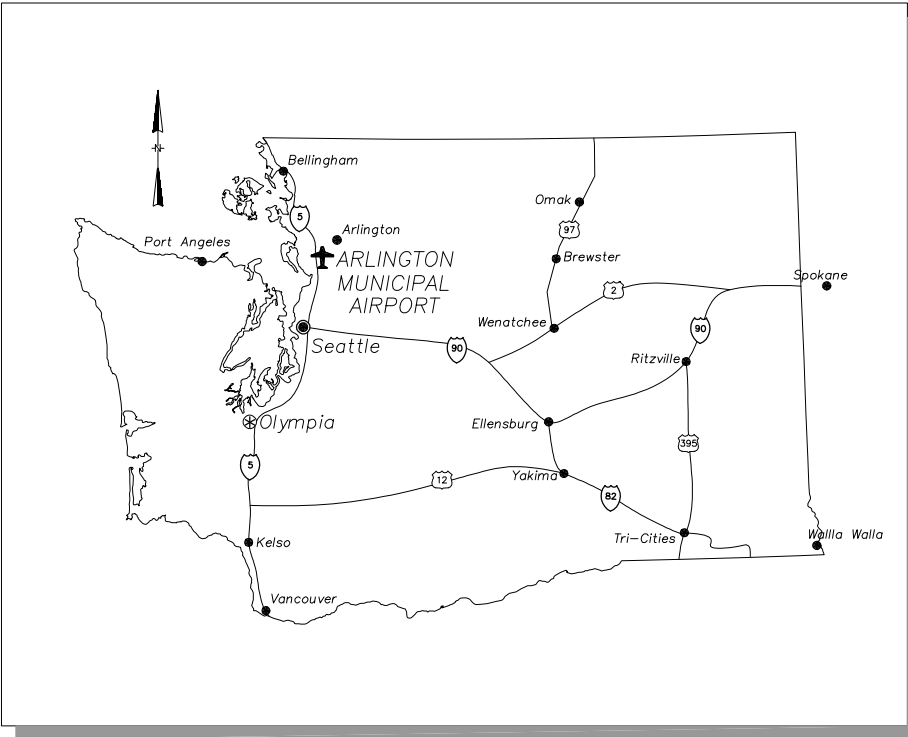


ARLINGTON MUNICIPAL AIRPORT CITY OF ARLINGTON 2011 TAXILANE IMPROVEMENTS PROJECT

ARLINGTON, WASHINGTON
FEBRUARY 2011



LOCATION MAP
NOT TO SCALE

SHEET INDEX

- C1 COVER SHEET
- C2 CONSTRUCTION SITE AND SAFETY PLAN
- C3 CONSTRUCTION PHASING PLAN
- C4 TEMPORARY EROSION CONTROL PLAN
- C5 DEMOLITION PLAN
- C6-C7 TYPICAL SECTIONS
- C8-C9 TAXILANE H PLAN & PROFILE
- C10-C11 TAXILANE J PLAN & PROFILE
- C12-C13 TAXILANE K PLAN & PROFILE
- C14-C15 CIVIL DETAILS
- C16 MARKING PLAN

MAYOR

MARGARET LARSON

AIRPORT MANAGER

ROBERT PUTNAM

AIRPORT SUPERVISOR

DALE CARMAN

AIRPORT INTERN

TIM MENSORIDES

AIRPORT COMMISSION

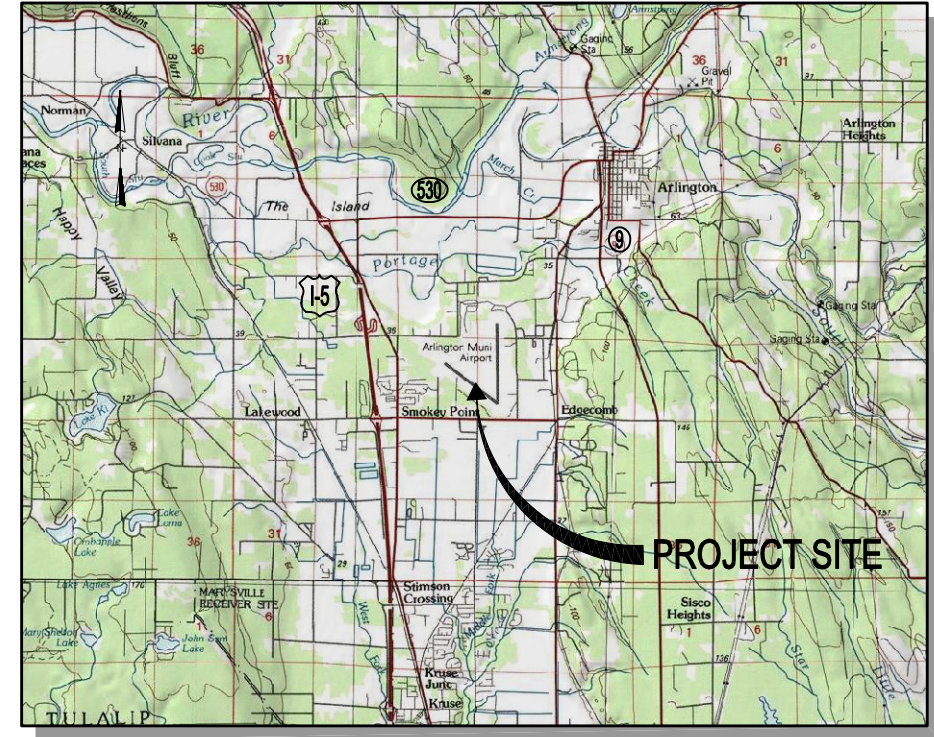
CHERI CARLSON
A J CHASE
JEFF MORGAN
DON MUNSON
BARBARA TOLBERT
THOMAS WRIGHT
JOHN SWIZER

CITY COUNCIL

STEVE BAKER
CHRIS RAEZER
SCOTT SOLLA
SALLY LIEN
MARILYN OERTLE
DICK BUTNER
LINDA BYRNES

ABBREVIATIONS

- RW - RUNWAY
- TW - TAXIWAY
- LF - LINEAR FEET
- RSA - RUNWAY SAFETY AREA
- OFA - OBJECT FREE AREA
- OFZ - OBJECT FREE ZONE
- RPZ - RUNWAY PROTECTION ZONE
- TSA - TAXIWAY SAFETY AREA
- TOFA - TAXIWAY OBJECT FREE AREA
- ROFA - RUNWAY OBJECT FREE AREA
- SD - STORM DRAIN
- STA - STATION
- CB - CATCH BASIN
- ELEV - ELEVATION
- I.E. - INVERT ELEVATION
- GE - GRATE ELEVATION
- RIM - RIM ELEVATION



VICINITY MAP
NOT TO SCALE



WHPacific
12100 NE 156th St, Ste 300
Bellevue, WA 98011
425-861-4800 Fax 425-861-4808
www.whpacific.com

REVISIONS	NO.	BY	DATE	REMARKS

SHEET INFO		WH	CMG	FT	DAF	2/4/2011	2/4/2011
DESIGNED	DRAWN	CHECKED	APPROVED	LAST EDIT	PLOT DATE	SUBMITTAL	

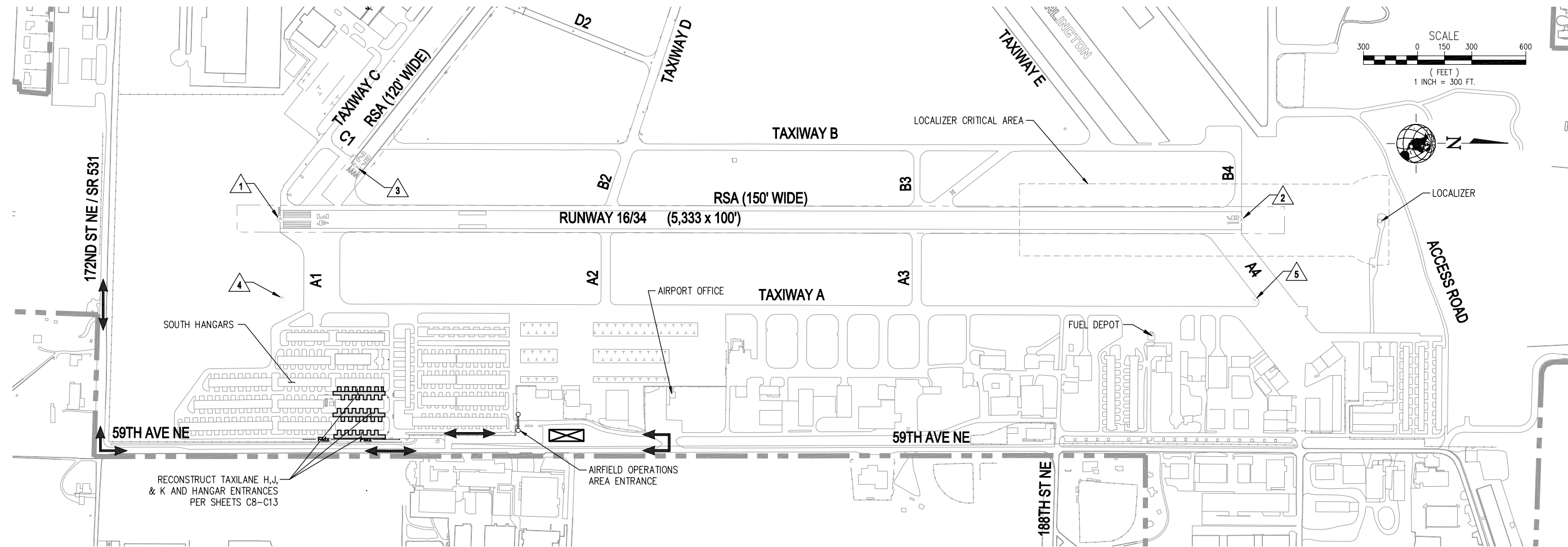
COVER SHEET
CITY OF ARLINGTON
2011 TAXILANE IMPROVEMENTS PROJECT
PROJECT NUMBER 036137
DRAWING FILE NAME 036137-C-CS01
SCALE N.T.S.

SHEET NUMBER
C1
1 of 16



1-800-424-5555
90% SUBMITTAL

[DATE: 2/4/2011 4:06 PM] [AUTHOR: wholden] [PLOTTER: DWF6 EPlot.pc3] [STYLE: WHP-Standard.ctb] [LAYOUT: 22x34 Cover]
[PATH: P:\City of Arlington\036137\Design\Drawings\Civil\036137-C-CS01.dwg]



SAFETY AND GENERAL NOTES:

1. THE CONTRACTOR SHALL REFER TO SECTION 01110, "GENERAL REQUIREMENTS," AND SECTION 01115 "CONSTRUCTION OPERATIONS PLAN" IN THE CONTRACT DOCUMENTS FOR FURTHER CONSTRUCTION REQUIREMENTS.
2. CONTRACTOR SHALL USE ACCESS ROUTES SHOWN AND MAINTAIN ROUTES AS NECESSARY.
3. ALL TRUCKS AND CONSTRUCTION EQUIPMENT SHALL BE EQUIPPED WITH FAA APPROVED FLAGS OR AN AMBER FLASHING LIGHT. THE CONTRACTOR SHALL PROVIDE A CREW MEMBER WITH A FUNCTIONAL AIRPORT RADIO DURING ALL WORKING HOURS TO MONITOR AIRCRAFT OPERATIONS. THE CONTRACTOR IS RESPONSIBLE FOR PROVIDING RADIO EQUIPMENT. THE UNICOM FREQUENCY AT THE ARLINGTON MUNICIPAL AIRPORT IS 122.7 MHZ.
4. AIRCRAFT HAVE RIGHT-OF-WAY AT ALL TIMES. NO CONSTRUCTION VEHICLES OR EQUIPMENT SHALL BE ALLOWED TO CROSS AN ACTIVE TAXIWAY OR RUNWAY, OR PASS IN FRONT OF A TAXIING AIRCRAFT. CONSTRUCTION EQUIPMENT SHALL NOT BE ALLOWED TO ENTER THE 11/29 OR 16/34 RUNWAY SAFETY AREAS OR THE 16/34 LOCALIZER CRITICAL AREA. THE AIRPORT MAY REQUIRE THE CONTRACTOR TO TEMPORARILY CEASE WORK AND PULL BACK FOR AIRCRAFT OPERATIONS AT WHICH TIME ALL PERSONNEL AND EQUIPMENT SHALL MOVE TO A SAFE DISTANCE.
5. ADJACENT TAXILANES OPEN TO AIRCRAFT SHALL BE CLEAN OF ALL FOREIGN OBJECT DEBRIS (FOD). CONTRACTOR SHALL CLEAN THESE AREAS BY CONTINUOUS VACUUM SWEEPING OR OTHER APPROVED METHOD AS NEEDED AND AS DIRECTED BY ENGINEER.
6. THE ROUTING OF TRAFFIC, STORAGE OF MATERIALS, AND STORAGE OF EQUIPMENT WILL BE DESIGNATED BY THE ENGINEER. THE CONTRACTOR SHALL RESTRICT THE MOVEMENT OF ALL EQUIPMENT TO APPROVED ROUTES. CONSTRUCTION EQUIPMENT SHALL BE PARKED ONLY IN THE APPROVED STAGING AREA DURING NON-WORKING HOURS.
7. THE COST FOR ALL TRAFFIC CONTROLS, INCLUDING RADIO, SHALL BE INCIDENTAL TO THE BID.
8. UPON COMPLETION OF CONSTRUCTION, CONTRACTOR SHALL REMOVE ALL EQUIPMENT AND MATERIALS FROM THE STAGING AREAS. ALL COMPACTED EARTH SHALL BE DISKED OR RAKED, AND THE AREAS SHALL BE GRADED SMOOTH AND HYDROSEEDDED.
9. THE CONTRACTOR SHALL REFRAIN FROM USING ANY OF THE AIRFIELD GRASS AREAS EXCEPT AS CONSTRUCTION DICTATES. REPAIR OF ANY DAMAGE DUE TO CONTRACTORS EQUIPMENT SHALL BE PAID FOR BY THE CONTRACTOR.
10. THE CONTRACTOR MUST HAVE A PERSON ON CALL 24 HOURS A DAY, 7 DAYS A WEEK TO ANSWER EMERGENCY MAINTENANCE NEEDS FOR AIRPORT HAZARD LIGHTING AND BARRICADES. THE CONTRACTOR MUST FILE THE CONTACT PERSON'S INFORMATION WITH THE AIRPORT AND RESIDENT ENGINEER.

CITY OF ARLINGTON GENERAL CONSTRUCTION NOTES:

1. ALL WORK AND MATERIALS SHALL CONFORM TO THE CURRENT EDITION OF THE CITY OF ARLINGTON PUBLIC WORKS STANDARDS AND SPECIFICATIONS, AND THE CURRENT EDITION OF THE WASHINGTON STATE DEPARTMENT OF TRANSPORTATION (WSDOT) STANDARD SPECIFICATIONS FOR ROAD, BRIDGE, AND MUNICIPAL CONSTRUCTION. A COPY OF THESE DOCUMENTS SHALL BE ON SITE DURING CONSTRUCTION.
2. A COPY OF THE APPROVED CONSTRUCTION PLANS MUST BE ON THE JOB SITE WHEN CONSTRUCTION IS IN PROGRESS.
3. ALL SITE WORK SHALL BE CONSTRUCTED IN ACCORDANCE WITH THE APPROVED PLANS. ANY DEVIATION FROM THE APPROVED PLANS WILL REQUIRE PRIOR APPROVAL FROM THE OWNER, THE CITY ENGINEER, AND OTHER APPROPRIATE PUBLIC AGENCIES.
4. ALL OF THE LOCATIONS OF THE EXISTING UTILITIES SHOWN IN THE PLANS HAVE BEEN ESTABLISHED BY FIELD SURVEY OR OBTAINED FROM AVAILABLE RECORDS AND SHALL THEREFORE BE CONSIDERED APPROXIMATE AND NOT NECESSARILY COMPLETE. IT IS THE SOLE RESPONSIBILITY OF THE CONTRACTOR TO INDEPENDENTLY VERIFY THE ACCURACY OF ALL UTILITY LOCATIONS.
5. THE CONTRACTOR SHALL LOCATE AND PROTECT ALL CASTINGS AND UTILITIES DURING CONSTRUCTION AND SHALL CONTACT THE UNDERGROUND UTILITIES LOCATE SERVICE (1-800-424-5555 OR 811) AT LEAST 48 HOURS PRIOR TO CONSTRUCTION.
6. INSPECTION AND ACCEPTANCE OF ALL WORK WILL BE ACCOMPLISHED BY REPRESENTATIVES OF THE CITY OF ARLINGTON. IT SHALL BE THE CONTRACTOR'S RESPONSIBILITY TO COORDINATE AND SCHEDULE APPROPRIATE INSPECTIONS, ALLOWING PROPER ADVANCE NOTICE. THE INSPECTOR MAY REQUIRE REMOVAL AND REPLACEMENT OF ITEMS THAT DO NOT MEET CITY STANDARDS OR WERE CONSTRUCTED WITHOUT INSPECTION.
7. THE CONTRACTOR SHALL KEEP THE ON-SITE AND OFF-SITE STREETS CLEAN AT ALL TIMES BY CLEANING WITH A SWEEPING AND/OR VACUUM TRUCK. WASHING OF THESE STREETS WILL NOT BE ALLOWED WITHOUT PRIOR APPROVAL FROM THE CITY INSPECTOR.
8. THE CONTRACTOR SHALL MAINTAIN TWO (2) SETS OF "AS-BUILT" PLANS SHOWING ALL FIELD CHANGES AND MODIFICATIONS. IMMEDIATELY AFTER CONSTRUCTION COMPLETION, THE CONTRACTOR SHALL DELIVER BOTH COPIES OF RED-LINED PLANS TO THE CITY. THE CITY WILL FORWARD ONE OF THE COPIES TO THE DESIGN ENGINEER.
9. CONTRACTOR SHALL BE READY TO PROVIDE EMERGENCY HANGAR ACCESS AT ANY TIME DURING CONSTRUCTION. IF NOTIFIED BY ENGINEER OR OWNER, CONTRACTOR SHALL BUILD TEMPORARY GRAVEL ACCESS RAMP AND PROVIDE UNOBSTRUCTED EGRESS TO THE ADJACENT TAXIWAY OR TAXILANE.

SURVEY CONTROL			
ID #	NORTHING	EASTING	DESCRIPTION
1	423987.602	1317543.015	MONUMENT IN CASE
2	429319.338	1317550.635	MONUMENT IN CASE
3	424412.126	1317259.968	MONUMENT IN CASE
4	423995.344	1317984.297	FOUND REBAR
5	429393.190	1317996.460	FOUND REBAR

NOTE: NORTHING AND EASTINGS ARE APPROXIMATE, POINTS TO BE FIELD VERIFIED AS NECESSARY.

LEGEND:

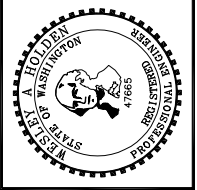
- HAUL ROUTE
- CONTRACTOR'S STAGING AREA
- AIRPORT PROPERTY LINE
- ACCESS GATE



90% SUBMITTAL

[DATE: 2/4/2011 4:06 PM] [AUTHOR: wholden] [PLOTTER: DWF6 EPlot.pc3] [STYLE: WHP-Standard.ctb] [LAYOUT: SP1]
 [PATH: P:\City of Arlington\036137-Design\Drawings\Civil\036137-C-SP01.dwg]

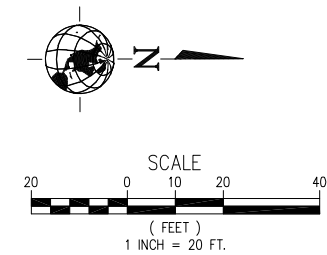
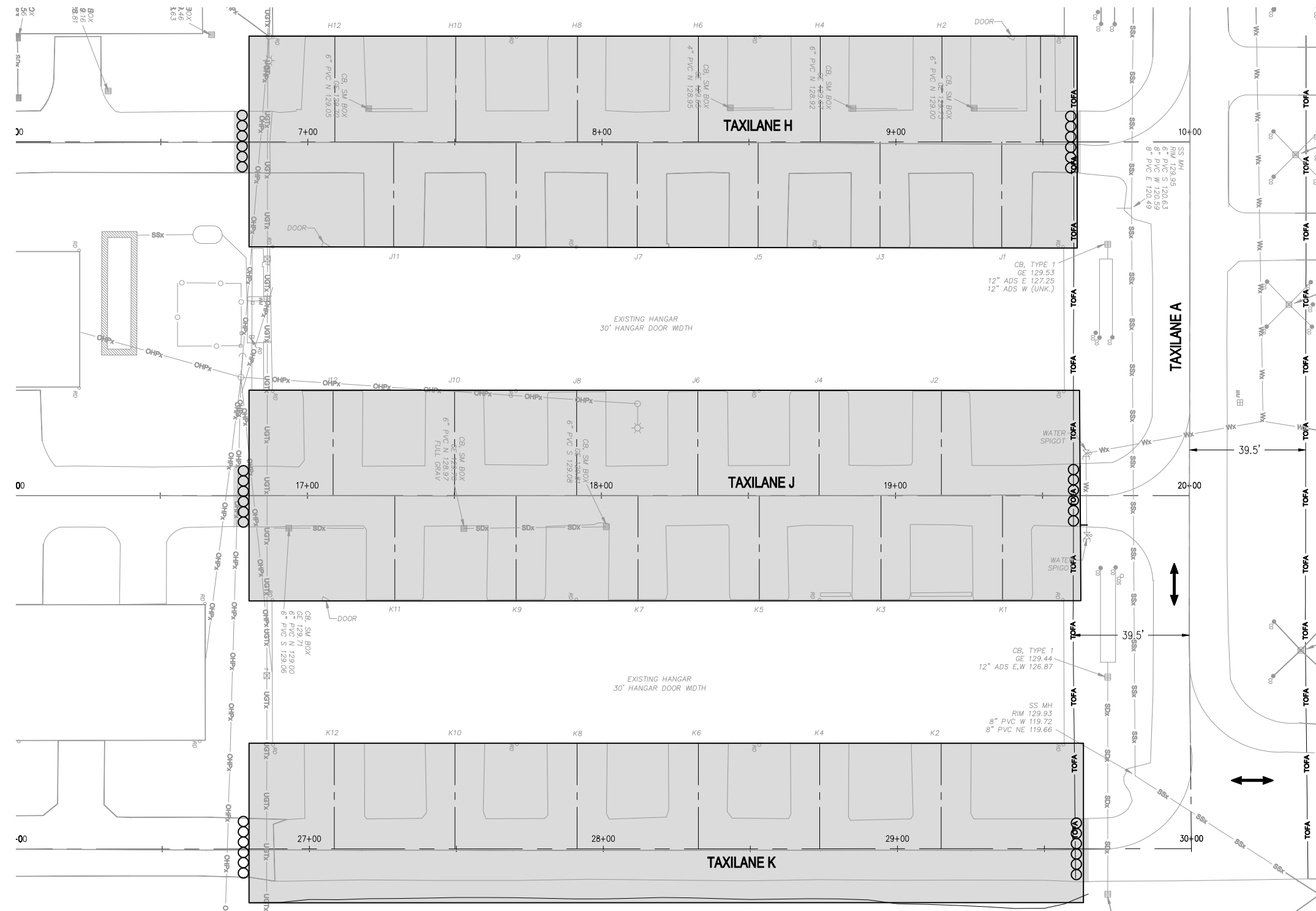
WHPacific
 12100 NE 16th St, Ste 300
 Shoreline, WA 98148
 425-951-4600 Fax 425-951-4608
 www.whpacific.com



REVISIONS	NO.	BY	DATE	REMARKS

SHEET INFO		WH	CMG	FT	DAF	2/4/2011	2/4/2011
DESIGNED	DRAWN	CHECKED	APPROVED	LAST EDIT	PLOT DATE	SUBMITTAL	

CONSTRUCTION SITE AND SAFETY PLAN
 CITY OF ARLINGTON
 2011 TAXILANE IMPROVEMENTS PROJECT
 PROJECT NUMBER 036137
 DRAWING FILE NAME 036137-C-SP01
 SCALE 1"=300'



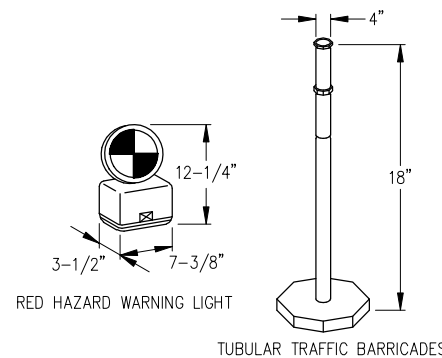
- LEGEND:**
- HAUL ROUTE
 - CONTRACTOR'S STAGING AREA
 - LIGHTED BARRICADES. SEE DETAIL (SEE ENGINEER FOR EXACT LOCATIONS)
 - TAXILANE OBJECT FREE AREA

CONSTRUCTION PHASING PLAN
SCALE: 1"=20'

GENERAL PHASING NOTES:

1. THE CONTRACT TIME FOR COMPLETION OF ALL WORK SHALL BE 30 WORKING DAYS (CONSECUTIVE).
2. LIQUIDATED DAMAGES SHALL BE ASSESSED FOR FAILURE TO SUBSTANTIALLY COMPLETE THE PROJECT WITHIN THE TIME SPECIFIED.
3. TAXILANE A SHALL REMAIN OPEN DURING CONSTRUCTION.
4. THE CONTRACTOR'S SPECIFIC PHASING PLAN SHALL BE SUBMITTED TO THE AIRPORT AT LEAST 2 WEEKS PRIOR TO THE BEGINNING OF CONSTRUCTION.
5. CONSTRUCTION WILL BE ALLOWED BETWEEN THE HOURS OF 7:00AM AND 6:00PM UNLESS OTHERWISE APPROVED BY THE ENGINEER.
6. CONTRACTOR SHALL SUBMIT WORK PLAN AND DETAILED SCHEDULE TO THE ENGINEER FOR REVIEW AND APPROVAL PRIOR TO THE ISSUANCE OF A NOTICE TO PROCEED.
7. THE CONTRACTOR SHALL INFORM THE ENGINEER AT LEAST 48 HOURS IN ADVANCE OF ANY CHANGES TO THE CONSTRUCTION ROUTINE.

8. FINAL PHASING SCHEDULING DETAILS WILL BE ESTABLISHED WITH THE CONTRACTOR AT THE PRE-CONSTRUCTION MEETING.
9. PRIOR TO BEGINNING WORK, THE CONTRACTOR SHALL PROVIDE AT LEAST 2 WEEKS NOTICE TO THE AIRPORT MANAGER TO ALLOW FOR NOTIFICATION OF AIRPORT RUNWAY USERS AND TENANTS.
10. TRAFFIC CONES AND LIGHTED BARRICADES (RED), SHALL BE USED AS APPROPRIATE TO CLEARLY MARK THE AREA AS CLOSED TO GROUND MOVEMENT OF AIRCRAFT AND VEHICLES.
11. ALL RUNWAYS SHALL REMAIN OPEN DURING CONSTRUCTION.
12. ARLINGTON AIRPORT CONDUCTS AN ANNUAL FLY-IN EVENT THAT IS OPEN TO THE PUBLIC BETWEEN THE DATES OF JULY 6-10, 2011. DURING THIS PERIOD NO WORK SHALL BE ALLOWED. THE CONTRACTOR SHALL PLAN THE SCHEDULE SO THAT ALL PAVEMENT SHALL BE USEABLE DURING THE FLY-IN. THE PROJECT SHALL BE SUBSTANTIALLY COMPLETE PRIOR TO JULY 6, 2011.



LIGHTED BARRICADE DETAIL
SCALE: N.T.S.

NOTES:

BARRICADES SHALL BE PLACED WHERE SHOWN, AROUND ANY AREA THAT MAY BE A HAZARD TO AIRCRAFT, OR AS DIRECTED BY THE ENGINEER. BARRICADES SHALL BE WEIGHTED DOWN WITH A SANDBAG OR OTHER LIKE MEANS.

SPACE BARRICADES 10' APART (MAX) AND ANCHOR TO PREVENT MOVEMENT. BARRICADE SHALL BE LIGHTED DURING PERIODS OF DARKNESS.



90% SUBMITTAL

[DATE: 2/4/2011 4:06 PM] [AUTHOR: wholden] [PLOTTER: DWF6 EPlot.pc3] [STYLE: WHP-Standard.ctb] [LAYOUT: PSI]
[PATH: P:\City of Arlington\036137\Design\Drawings\Civil\036137-C-PS01.dwg]

12100 NE 195th St, Ste 300
Aurora, WA 98011
425-951-4800 Fax: 425-951-4808
www.whpacific.com

REVISIONS		NO.	BY	DATE	REMARKS
		1	C3		

SHEET INFO		WH	CMG	FT	DAF	2/4/2011	2/4/2011
DESIGNED							
DRAWN							
CHECKED							
APPROVED							
LAST EDIT							
PLOT DATE							
SUBMITTAL							

CONSTRUCTION PHASING PLAN

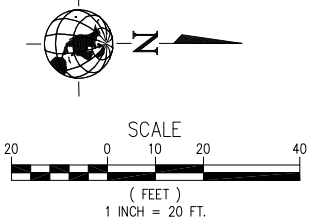
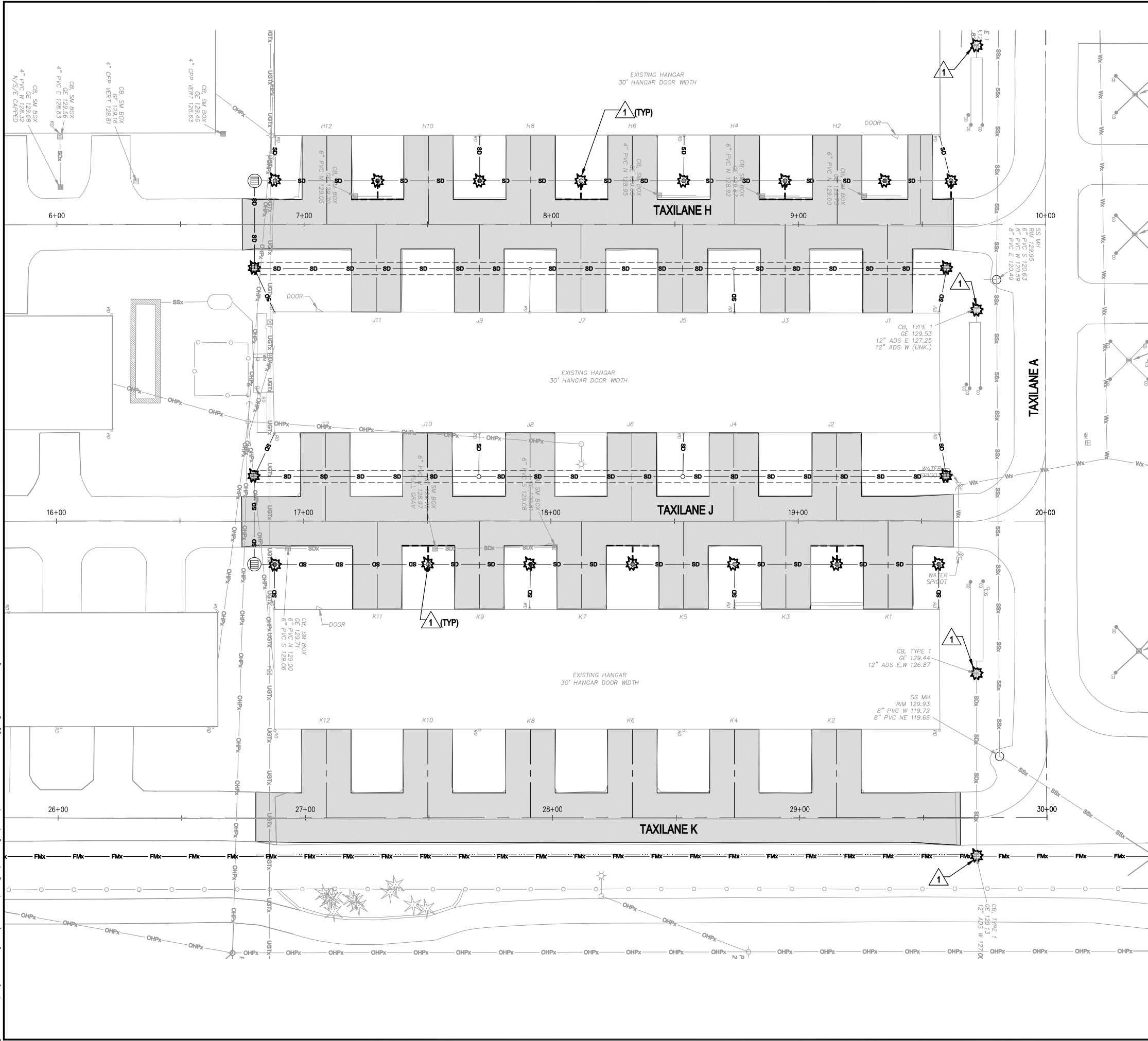
CITY OF ARLINGTON

2011 TAXILANE IMPROVEMENTS PROJECT

PROJECT NUMBER 036137 DRAWING FILE NAME 036137-C-PS01

SCALE 1"=20'

SHEET NUMBER	C3
3 of 16	



GRADING AND EROSION CONTROL NOTES:

ALL REQUIRED SEDIMENTATION AND EROSION CONTROL FACILITIES MUST BE CONSTRUCTED AND IN OPERATION PRIOR TO LAND CLEARING AND/OR OTHER CONSTRUCTION ACTIVITIES, TO INSURE THAT SEDIMENT-LADEN WATER AND STORM DRAINAGE RUNOFF DOES NOT IMPACT THE ADJACENT PROPERTIES OR THE NATURAL DRAINAGE WAYS. ALL EROSION AND SEDIMENT FACILITIES SHALL BE MAINTAINED IN A SATISFACTORY CONDITION UNTIL SUCH TIME THAT CLEARING AND/OR CONSTRUCTION IS COMPLETED AND POTENTIAL FOR ON-SITE EROSION HAS PASSED. THE IMPLEMENTATION, MAINTENANCE, REPLACEMENT AND ADDITIONS TO EROSION/SEDIMENTATION CONTROL SYSTEMS SHALL BE THE RESPONSIBILITY OF THE PERMITTEE.

THE SEDIMENTATION AND EROSION CONTROL FACILITIES DEPICTED ON THIS DRAWING ARE INTENDED TO BE MINIMUM REQUIREMENTS TO MEET ANTICIPATED SITE CONDITIONS. AS CONSTRUCTION PROGRESSES AND UNEXPECTED OR SEASONAL CONDITIONS DICTATE, THE PERMITTEE (CONTRACTOR) SHALL ANTICIPATE THAT MORE EROSION AND SEDIMENTATION CONTROL FACILITIES WILL BE NECESSARY TO INSURE COMPLETE SILTATION CONTROL ON THE PROPOSED SITE. DURING THE COURSE OF CONSTRUCTION, IT SHALL BE THE OBLIGATION AND RESPONSIBILITY OF THE PERMITTEE (CONTRACTOR) TO ADDRESS ANY NEW CONDITIONS THAT MAY BE CREATED BY HIS ACTIVITIES AND TO PROVIDE ADDITIONAL FACILITIES, OVER AND ABOVE MINIMUM REQUIREMENTS, AS MAY BE NEEDED TO PROTECT ADJACENT PROPERTIES AND WATER QUALITY OF THE RECEIVING DRAINAGE SYSTEM. THE IMPLEMENTATION, MAINTENANCE, REPLACEMENT AND ADDITIONS TO THESE CONTROL SYSTEMS SHALL BE THE RESPONSIBILITY OF THE CONTRACTOR.

THE TEMPORARY EROSION CONTROL FACILITIES, INCLUDING ALL PERIMETER CONTROLS, SHALL REMAIN IN PLACE UNTIL FINAL SITE CONSTRUCTION IS COMPLETED AND APPROVAL HAS BEEN RECEIVED FROM THE OWNER, ENGINEER, AND FAA. DENUDED AREAS AND SOIL STOCKPILES MUST BE STABILIZED ACCORDING TO THE FOLLOWING SCHEDULE:

FROM MAY 1 TO SEPTEMBER 30, ALL DISTURBED AREAS TO REMAIN UNWORKED FOR MORE THAN 7 DAYS SHALL BE IMMEDIATELY COVERED BY SEEDING. ANY AREAS TO REMAIN UNWORKED FOR MORE THAN 30 DAYS SHALL BE SEEDED OR SODDED.

FROM OCTOBER 1 TO APRIL 30, ALL DISTURBED AREAS TO REMAIN UNWORKED FOR MORE THAN 2 DAYS SHALL BE PROVIDED WITH TEMPORARY COVER INCLUDING MULCH, SOD, OR PLASTIC COVERING. ANY AREAS TO REMAIN UNWORKED FOR MORE THAN 30 DAYS SHALL BE SEEDED OR SODDED.

CATCH BASIN SILT PROTECTION WILL BE REQUIRED FOR ALL STORM DRAIN CATCH BASINS AND MANHOLES WHICH WILL COLLECT SEDIMENT LADEN RUNOFF DUE TO CONSTRUCTION RELATED ACTIVITIES.

KEY NOTES:

- INSTALL STORM DRAIN INLET PROTECTION PER WSDOT STD. PLAN I-40.20-00.

LEGEND:

- STORM DRAIN INLET PROTECTION
- PAVING LIMITS
- INFILTRATION TRENCH



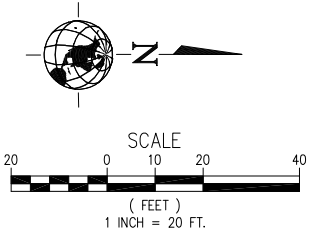
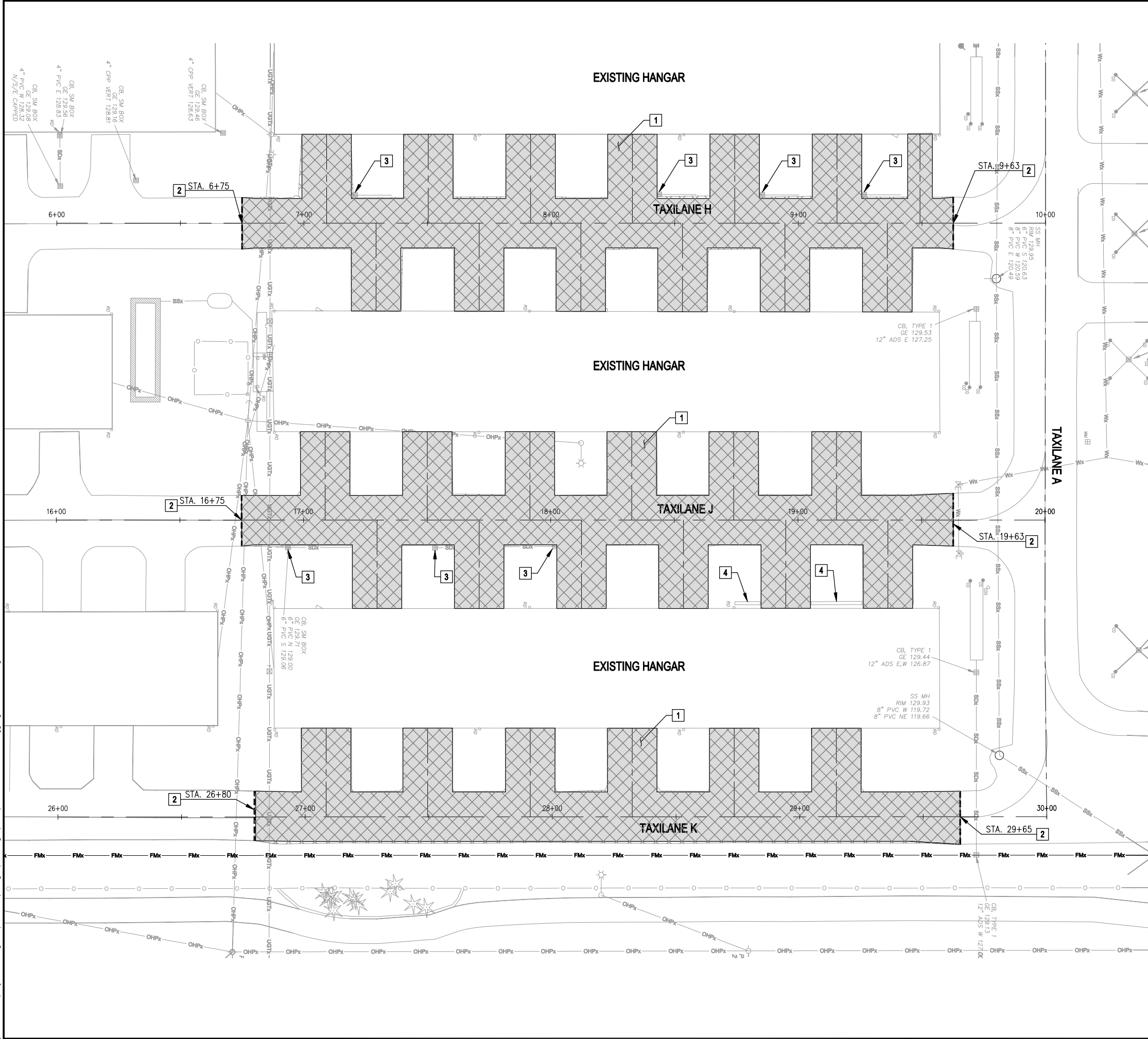
NO.	BY	DATE	REMARKS

SHEET INFO	DESIGNED	WH	CMG	FT	DAF	LAST EDIT	2/4/2011	2/4/2011
DRAWN								
CHECKED								
APPROVED								

SCALE	1"=20'
-------	--------

TEMPORARY EROSION CONTROL PLAN
CITY OF ARLINGTON
2011 TAXILANE IMPROVEMENTS PROJECT
DRAWING FILE NAME: 036137-C-EC01
PROJECT NUMBER: 036137

90% SUBMITTAL



KEY NOTES:

1. REMOVE TAXILANE PAVEMENT.
2. SAWCUT PAVEMENT FULL DEPTH.
3. REMOVE EXISTING DRAINAGE STRUCTURE AND ALL ASSOCIATED MATERIALS.
4. REMOVE BRICK PAVERS.

LEGEND:

- BITUMINOUS PAVEMENT REMOVAL (2"±)
- FULL DEPTH SAWCUT
- EXISTING OVERHEAD POWER
- EXISTING SANITARY SEWER
- EXISTING TELEPHONE CONDUIT

CONSTRUCTION NOTES:

1. ANY ELECTRICAL OR DRAINAGE ITEMS BEYOND THOSE CALLED FOR TO BE REMOVED THAT ARE DAMAGED DURING CONSTRUCTION SHALL BE REPAIRED/REINSTALLED AS DIRECTED BY ENGINEER AND SHALL BE CONSIDERED INCIDENTAL TO CONSTRUCTION. NO SEPARATE PAYMENT WILL BE MADE FOR REPAIR/REINSTALLATION OF DISTURBED OR DAMAGED ITEMS.
2. ALL BITUMINOUS SAWCUTS SHALL BE INCIDENTAL TO PAVEMENT REMOVAL.
3. EXISTING TAXILANE PAVEMENT SECTION CONSISTS OF APPROXIMATELY 2" BITUMINOUS PAVEMENT OVER BASE COURSE. REMOVAL OF BASE COURSE MATERIAL SHALL BE PAID FOR UNDER UNCLASSIFIED EXCAVATION.
4. ALL STOCKPILING, REHANDLING AND PLACEMENT OF SUITABLE UNCLASSIFIED EXCAVATION MATERIAL SHALL BE CONSIDERED INCIDENTAL TO APPLICABLE BID ITEMS.

[DATE: 2/4/2011 4:07 PM] [AUTHOR: wholder] [PLOTTER: DWF6 EPlot.pc3] [STYLE: WHP-Standard.ctb] [LAYOUT: DP1]
 [PATH: P:\City of Arlington\Q36137\Design\Drawings\Civil\Q36137-C-DP01.dwg]

WHPacific
 12100 NE 196th St, Ste 300
 Everett, WA 98201
 425-951-4600 Fax: 425-951-4808
 www.whpacific.com



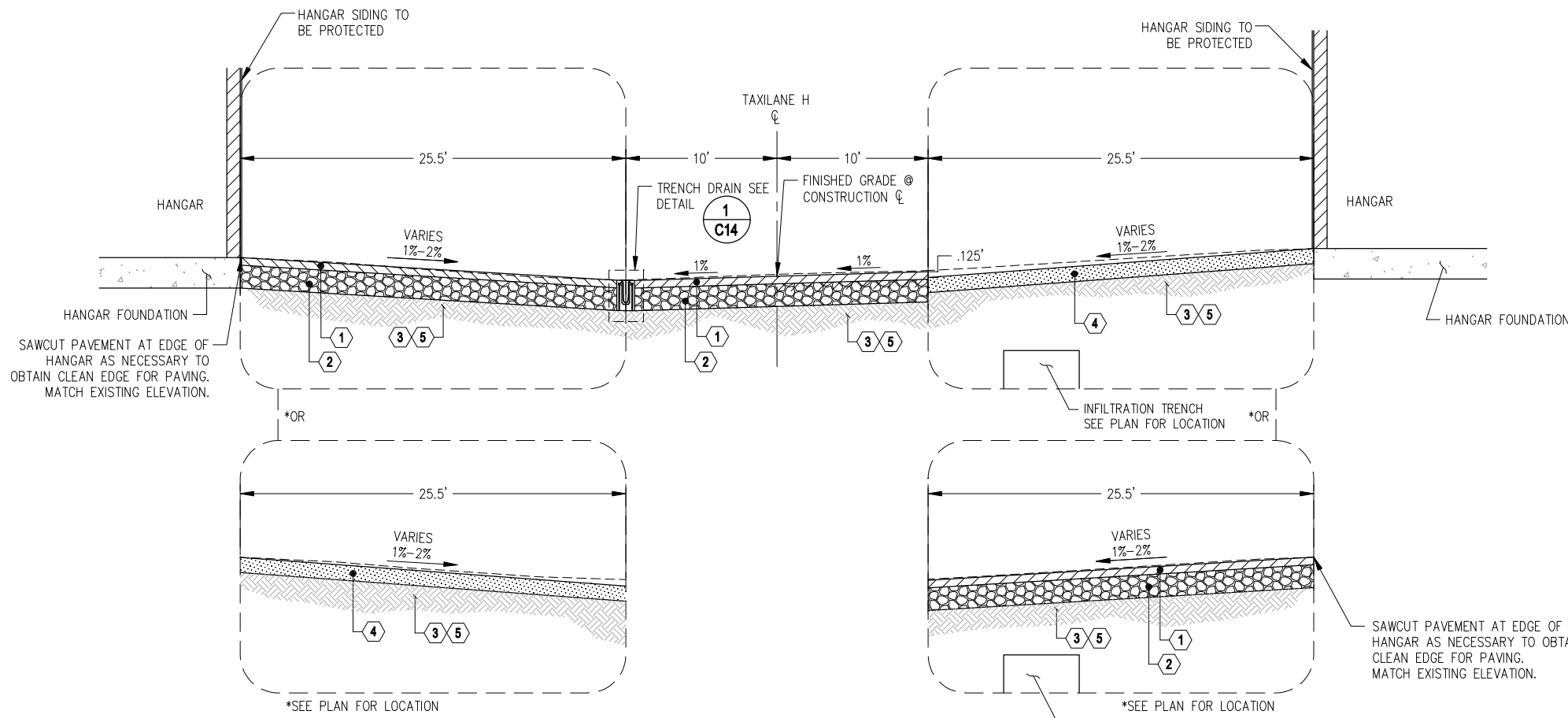
REVISIONS	NO.	BY	DATE	REMARKS

SHEET INFO	DESIGNED	WH	CMG
DRAWN	CHECKED	FT	DAF
APPROVED	LAST EDIT	2/4/2011	2/4/2011

DEMOLITION PLAN
 CITY OF ARLINGTON
 2011 TAXILANE IMPROVEMENTS PROJECT
 PROJECT NUMBER 036137
 DRAWING FILE NAME 036137-C-DP01
 SCALE 1"=20'
 SHEET NUMBER **C5**
 5 of 16

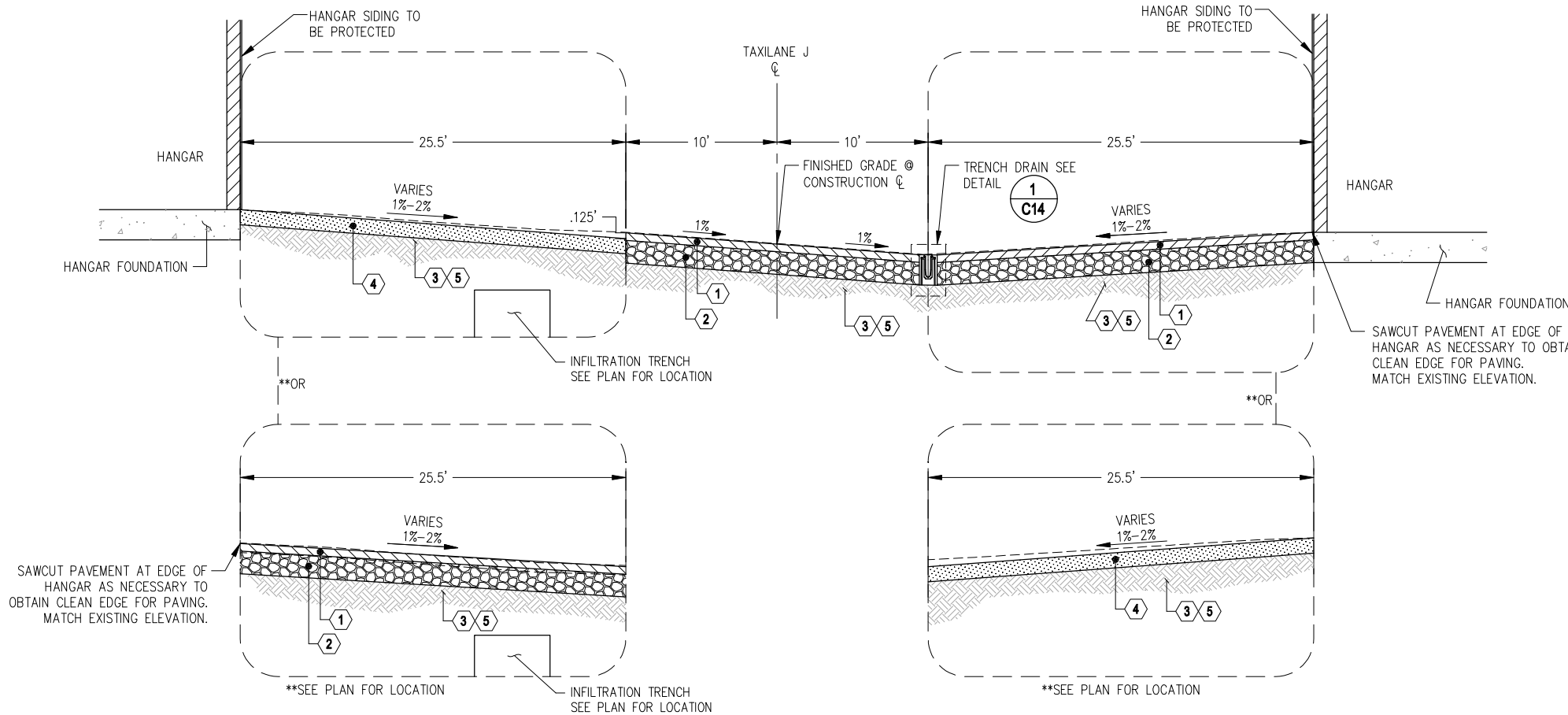


90% SUBMITTAL



TAXILANE H TYPICAL SECTION
 SCALE: N.T.S.
 *SEE TAXILANE H PLAN SHEETS C8-C9

1
C6



TAXILANE J TYPICAL SECTION
 SCALE: N.T.S.
 **SEE TAXILANE J PLAN SHEETS C10-C11

2
C6

KEY NOTES:

1. 2" WSDOT HMA CL. 1/2 IN. PG 64-22
2. 6" WSDOT CRUSHED SURFACING BASE COURSE
3. COMPACTED SUBGRADE (P-152)
4. 4" TOPSOIL
5. EXCAVATE UNSUITABLE MATERIAL AT THE DIRECTION OF THE ENGINEER. PLACE GEOTEXTILE FABRIC AND BACKFILL WITH GRAVEL BORROW. SEE DETAIL.

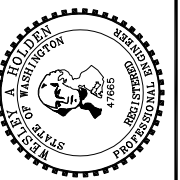
4
C14

CONSTRUCTION NOTES:

1. HMA SHALL BE IN ACCORDANCE WITH 2010 WSDOT STANDARD SPECIFICATION 5-04.
2. CRUSHED SURFACING BASE COURSE SHALL BE IN ACCORDANCE WITH 2010 WSDOT STANDARD SPECIFICATION 9-03.9(3). INSTALLATION SHALL BE IN ACCORDANCE WITH SECTION 4-04.

DATE: 2/4/2011 4:07 PM [AUTHOR: wholder] [PLOTTER: DWF6 EPlot.pc3] [STYLE: WHP-Standard.ctb] [LAYOUT: DT1]
 PATH: P:\City of Arlington\036137\Design\Drawings\Civil\036137-C-DT01.dwg

WHPacific
 12100 NE 156th St, Ste 300
 Seattle, WA 98148
 425-951-4800 Fax 425-951-4808
 www.whpacific.com



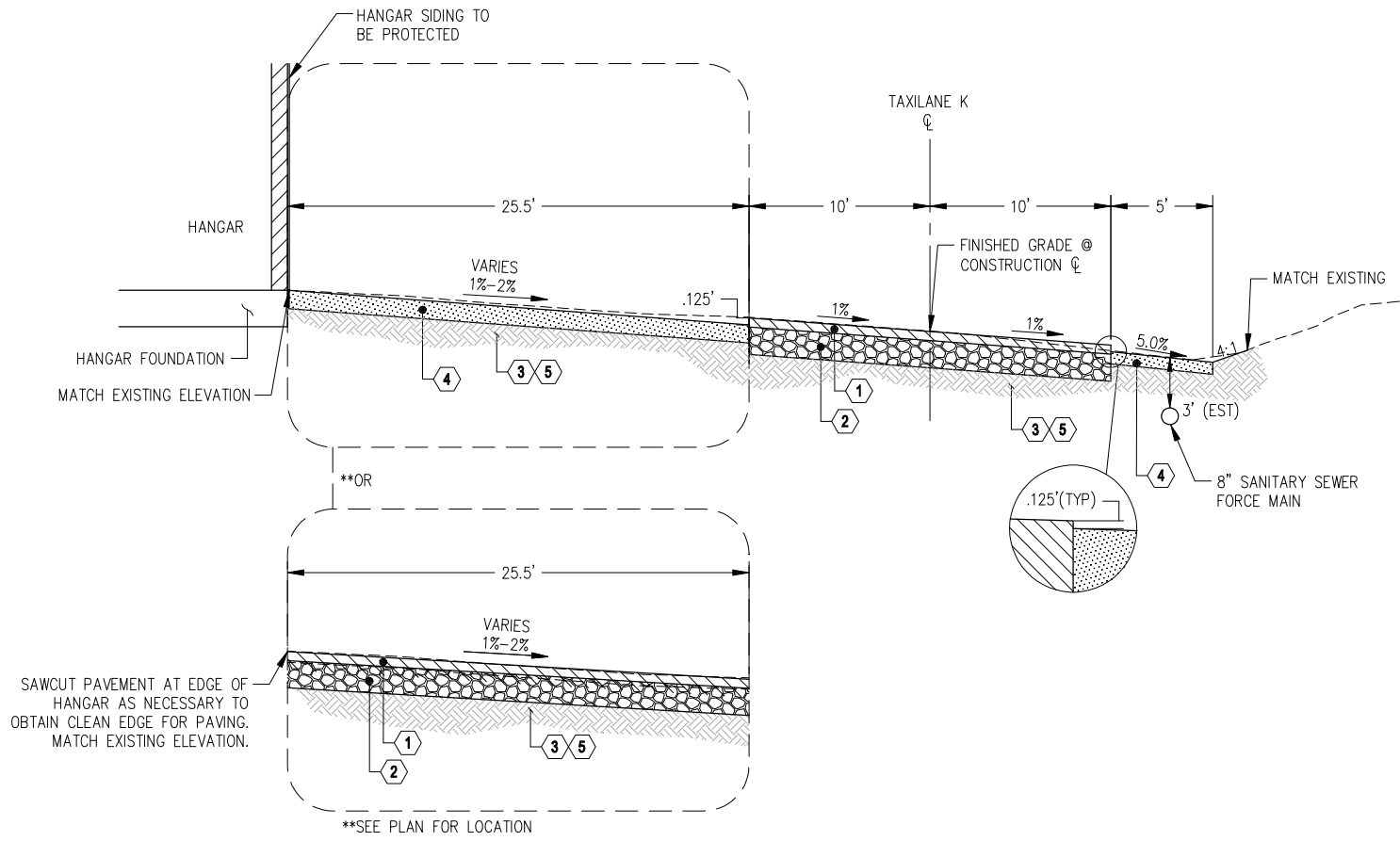
REVISIONS	NO.	BY	DATE	REMARKS

SHEET INFO		WH	CMG	FT	DAF	2/4/2011
DESIGNED	DRAWN	CHECKED	APPROVED	LAST EDIT	PLOT DATE	SUBMITTAL

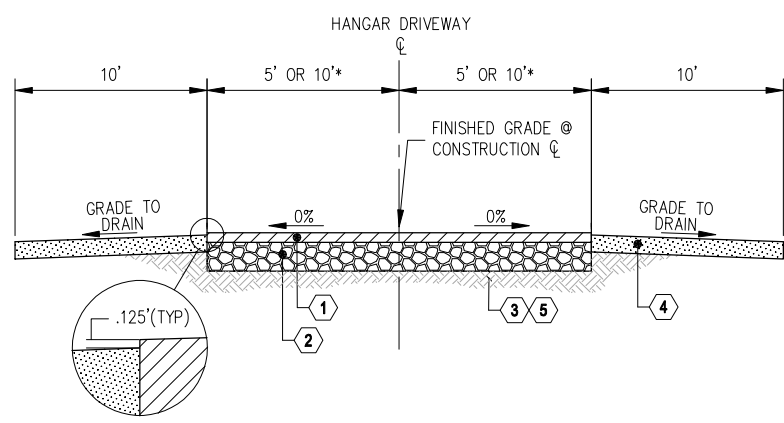
TYPICAL SECTIONS
 CITY OF ARLINGTON
 2011 TAXILANE IMPROVEMENTS PROJECT
 PROJECT NUMBER 036137
 DRAWING FILE NAME 036137-C-DT01
 SCALE N.T.S.



90% SUBMITTAL



TAXILANE K TYPICAL SECTION
 SCALE: N.T.S.
 **SEE TAXILANE K PLAN SHEETS C12-C13



HANGAR DRIVEWAY TYPICAL SECTION
 SCALE: N.T.S.
 **SEE PLAN FOR DRIVEWAY WIDTH

KEY NOTES:

- 2" WSDOT HMA CL. 1/2 IN. PG 64-22
- 6" WSDOT CRUSHED SURFACING BASE COURSE
- COMPACTED SUBGRADE (P-152)
- 4" TOPSOIL
- EXCAVATE UNSUITABLE MATERIAL AT THE DIRECTION OF THE ENGINEER. PLACE GEOTEXTILE FABRIC AND BACKFILL WITH GRAVEL BORROW. SEE DETAIL.

4
C14

CONSTRUCTION NOTES:

- HMA SHALL BE IN ACCORDANCE WITH 2010 WSDOT STANDARD SPECIFICATION 5-04.
- CRUSHED SURFACING BASE COURSE SHALL BE IN ACCORDANCE WITH 2010 WSDOT STANDARD SPECIFICATION 9-03.9(3). INSTALLATION SHALL BE IN ACCORDANCE WITH SECTION 4-04.

WHPacific
 12100 NE 156th St, Ste 300
 Shoreline, WA 98148
 425-951-4600 Fax 425-951-4608
 www.whpacific.com



REVISIONS	NO.	BY	DATE	REMARKS

SHEET INFO		WH	CMG	FT	DAF	2/4/2011	2/4/2011
DESIGNED							
DRAWN							
CHECKED							
APPROVED							
LAST EDIT							
PLOT DATE							
SUBMITTAL							

TYPICAL SECTIONS

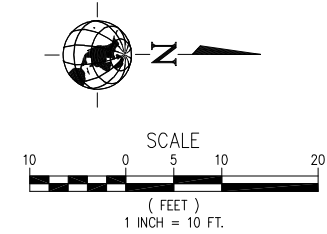
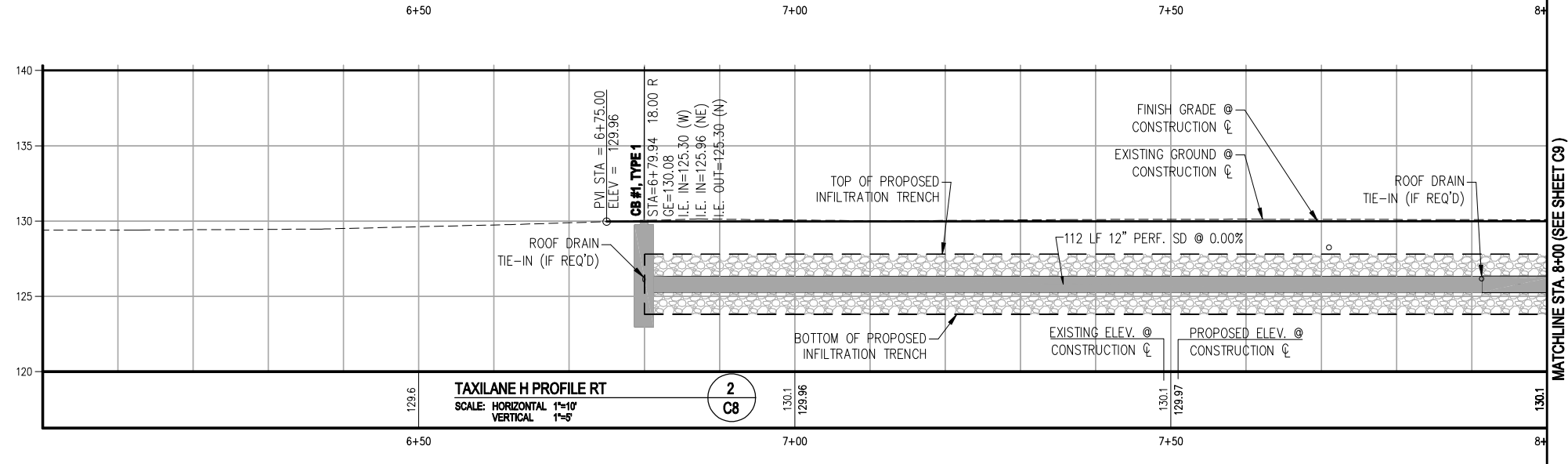
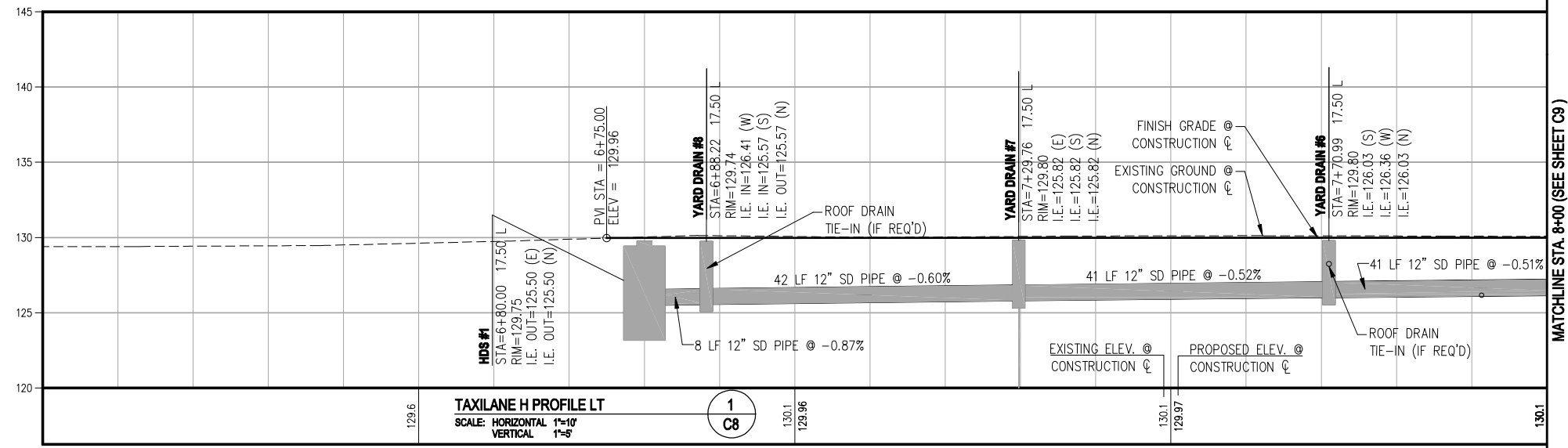
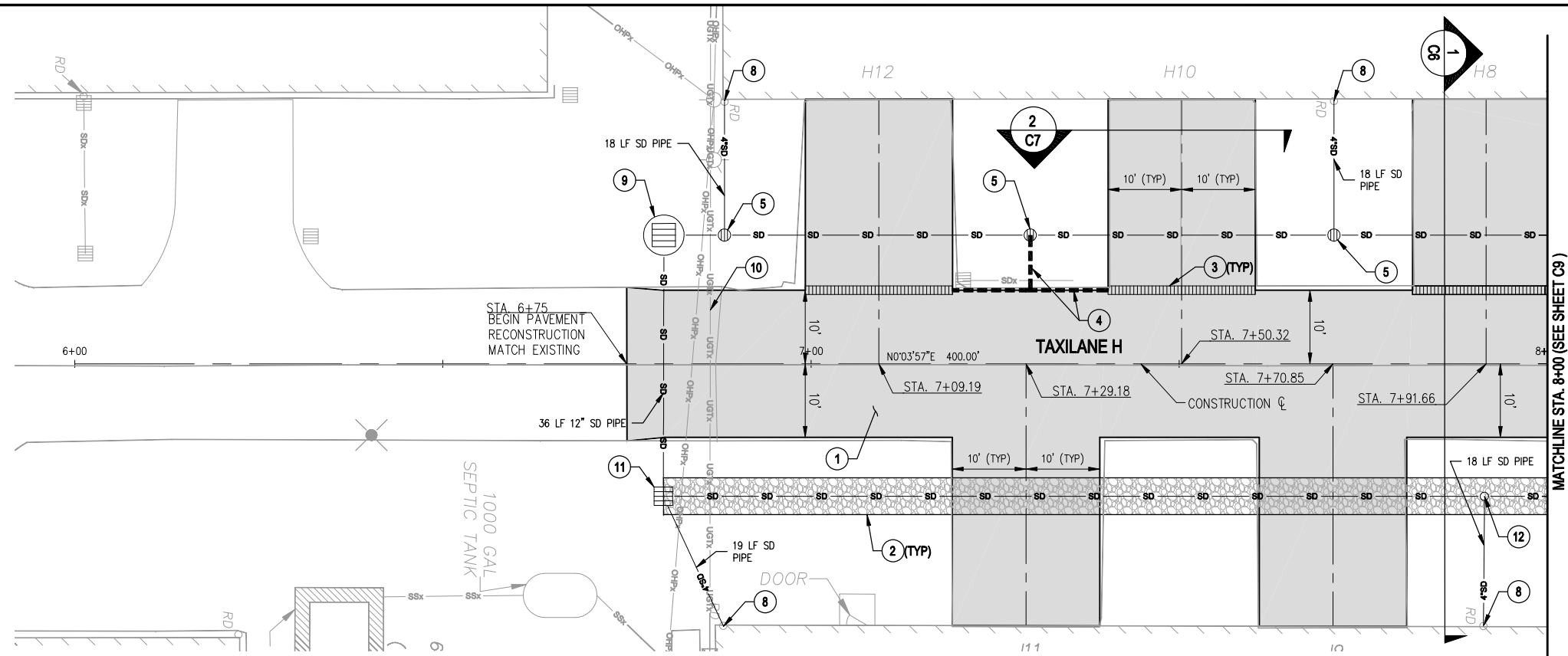
CITY OF ARLINGTON
 2011 TAXILANE IMPROVEMENTS PROJECT

PROJECT NUMBER 036137
 DRAWING FILE NAME 036137-C-DT01

SCALE N.T.S.



90% SUBMITTAL



- GENERAL NOTES:**
- RECONSTRUCT TAXILANE PAVEMENT.
 - CONSTRUCT INFILTRATION TRENCH, SEE DETAIL **3 C14**
 - INSTALL SLOTTED DRAIN. SEE DETAIL **1 C14**
 - INSTALL SLOTTED DRAIN CONNECTION. SEE DETAIL **2 C14**
 - INSTALL YARD DRAIN. SEE DETAIL **1 C15**
 - CONNECT TO EXISTING ROOF DRAIN. SEE DETAIL **2 C15**
 - INSTALL HYDRODYNAMIC SEPARATOR (HDS) WITH SCREEN. SEE DETAIL **3 C15**
 - RELOCATE PHONE BY OTHERS (FRONTIER). CONTRACTOR SHALL COORDINATE WITH BARB ROBINSON AT 360-757-7624 A MINIMUM OF 10 DAYS PRIOR TO REQUIRED ADJUSTMENT.
 - INSTALL TYPE 1 CATCH BASIN PER WSDOT STD PLAN B-5.20-00.
 - CONNECT ROOF DRAIN TO INFILTRATION TRENCH. SEE DETAIL **2 C15**

LEGEND:

- SLOTTED DRAIN
- INFILTRATION TRENCH
- 12" STORM DRAIN PIPE - TYPE PER PLAN/PROFILE
- 4" STORM DRAIN PIPE - ROOF DRAIN
- 6" STORM DRAIN PIPE - SLOTTED DRAINS
- DITCH BOTTOM
- CUT LIMITS
- 12" YARD DRAIN
- TYPE 1 CATCH BASIN
- HYDRODYNAMIC SEPARATOR (HDS)

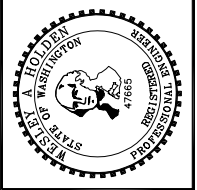
CONSTRUCTION NOTES:

- ROOF DRAIN CONNECTION TO THE PROPOSED DRAINAGE STRUCTURES IS NECESSARY ONLY IF THE EXISTING ROOF DRAIN OUTLET PIPES ARE DISTURBED DURING CONSTRUCTION.



[DATE: 2/4/2011 4:08 PM] [AUTHOR: wholden] [PLOTTER: DWF6 EPlot.pc3] [STYLE: WHP-Standard.ctb] [LAYOUT: PP1]
 [PATH: P:\City of Arlington\036137\Design\Drawings\Civil\036137-C-PP01.dwg]

WHPacific
 12100 NE 195th St, Ste 300
 Shoreline, WA 98148
 425-951-4800 Fax: 425-951-4808
 www.whpacific.com



REVISIONS	NO.	BY	DATE	REMARKS

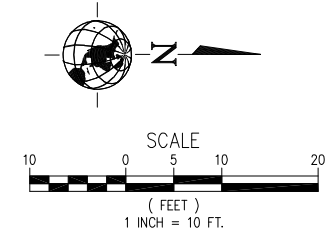
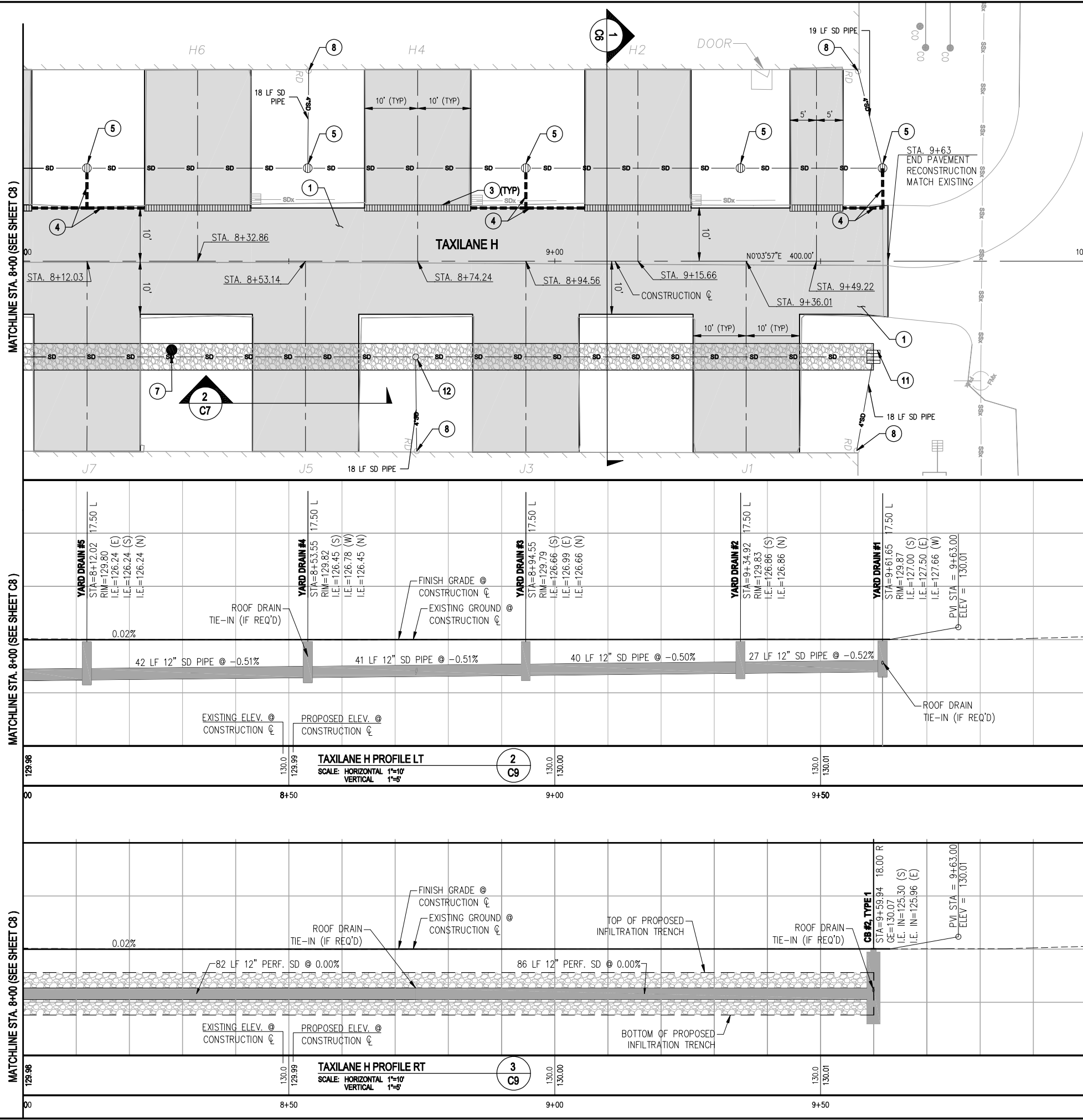
SHEET INFO	WH	CMG	FT	DAF	2/4/2011	2/4/2011
DESIGNED						
DRAWN						
CHECKED						
APPROVED						
LAST EDIT						
PLOT DATE						
SUBMITTAL						

TAXILANE H PLAN & PROFILE
 CITY OF ARLINGTON
 2011 TAXILANE IMPROVEMENTS PROJECT

PROJECT NUMBER: 036137
 DRAWING FILE NAME: 036137-C-PP01
 SCALE: 1"=10'

SHEET NUMBER: **C8**
 8 of 16

90% SUBMITTAL



GENERAL NOTES:

- RECONSTRUCT TAXILANE PAVEMENT.
- CONSTRUCT INFILTRATION TRENCH. SEE DETAIL **3 C14**
- INSTALL SLOTTED DRAIN. SEE DETAIL **1 C14**
- INSTALL SLOTTED DRAIN CONNECTION. SEE DETAIL **2 C14**
- INSTALL YARD DRAIN. SEE DETAIL **1 C15**
- INSTALL OBSERVATION WELL. SEE DETAIL **5 C14**
- CONNECT TO EXISTING ROOF DRAIN. SEE DETAIL **2 C15**
- INSTALL HYDRODYNAMIC SEPARATOR (HDS) WITH SCREEN. SEE DETAIL **3 C15**
- RELOCATE PHONE BY OTHERS (FRONTIER). CONTRACTOR SHALL COORDINATE WITH BARB ROBINSON AT 360-757-7624 A MINIMUM OF 10 DAYS PRIOR TO REQUIRED ADJUSTMENT.
- INSTALL TYPE 1 CATCH BASIN PER WSDOT STD PLAN B-5.20-00.
- CONNECT ROOF DRAIN TO INFILTRATION TRENCH. SEE DETAIL **2 C15**

LEGEND:

- SLOTTED DRAIN
- INFILTRATION TRENCH
- 12" STORM DRAIN PIPE - TYPE PER PLAN/PROFILE
- 4" SD PIPE - ROOF DRAIN
- 6" SD PIPE - SLOTTED DRAINS
- DITCH BOTTOM
- CUT LIMITS
- 12" YARD DRAIN
- TYPE 1 CATCH BASIN
- HYDRODYNAMIC SEPARATOR (HDS)

CONSTRUCTION NOTES:

- ROOF DRAIN CONNECTION TO THE PROPOSED DRAINAGE STRUCTURES IS NECESSARY ONLY IF THE EXISTING ROOF DRAIN OUTLET PIPES ARE DISTURBED DURING CONSTRUCTION.



90% SUBMITTAL

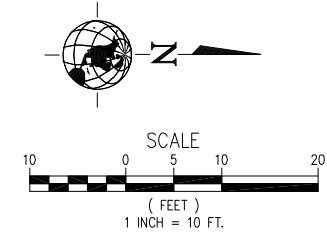
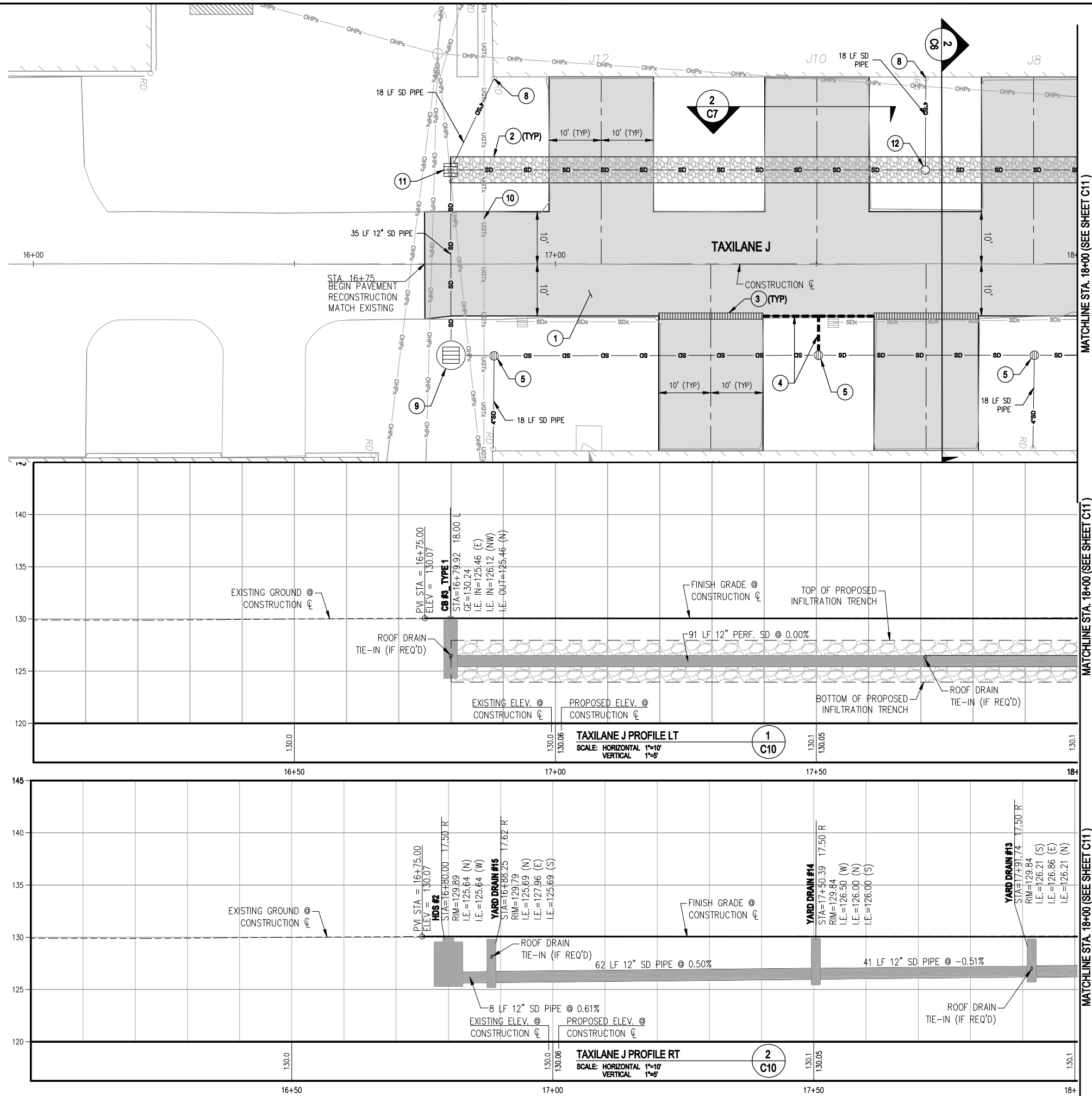
12100 NE 195th St, Ste 300
 Auburn, WA 98011
 425-951-4800 Fax: 425-951-4808
 www.whpacific.com

REVISIONS		SHEET INFO	
NO.	BY	WH	DATE
		DESIGNED	
		DRAWN	
		CHECKED	
		APPROVED	
		LAST EDIT	2/4/2011
		PLOT DATE	2/4/2011
			SUBMITTAL

TAXILANE H PLAN & PROFILE
 CITY OF ARLINGTON
 2011 TAXILANE IMPROVEMENTS PROJECT

PROJECT NUMBER: 036137
 DRAWING FILE NAME: 036137-C-PP01
 SCALE: 1"=10'

SHEET NUMBER
C9
 9 of 16



GENERAL NOTES:

- RECONSTRUCT TAXILANE PAVEMENT.
- CONSTRUCT INFILTRATION TRENCH. SEE DETAIL **3 C14**
- INSTALL SLOTTED DRAIN. SEE DETAIL **1 C14**
- INSTALL SLOTTED DRAIN CONNECTION. SEE DETAIL **2 C14**
- INSTALL YARD DRAIN. SEE DETAIL **1 C15**
- CONNECT TO EXISTING ROOF DRAIN. SEE DETAIL **2 C15**
- INSTALL HYDRODYNAMIC SEPARATOR (HDS) WITH SCREEN. SEE DETAIL **3 C15**
- RELOCATE PHONE BY OTHERS (FRONTIER). CONTRACTOR SHALL COORDINATE WITH BARB ROBINSON AT 360-757-7624 A MINIMUM OF 10 DAYS PRIOR TO REQUIRED ADJUSTMENT.
- INSTALL TYPE 1 CATCH BASIN PER WSDOT STD PLAN B-5.20-00.
- CONNECT ROOF DRAIN TO INFILTRATION TRENCH. SEE DETAIL **2 C15**

LEGEND:

- SLOTTED DRAIN
- INFILTRATION TRENCH
- 12" STORM DRAIN PIPE - TYPE PER PLAN/PROFILE
- 4" SD PIPE - ROOF DRAIN
- 6" SD PIPE - SLOTTED DRAINS
- DITCH BOTTOM
- CUT LIMITS
- 12" YARD DRAIN
- TYPE 1 CATCH BASIN
- HYDRODYNAMIC SEPARATOR (HDS)

CONSTRUCTION NOTES:

- ROOF DRAIN CONNECTION TO THE PROPOSED DRAINAGE STRUCTURES IS NECESSARY ONLY IF THE EXISTING ROOF DRAIN OUTLET PIPES ARE DISTURBED DURING CONSTRUCTION.



90% SUBMITTAL

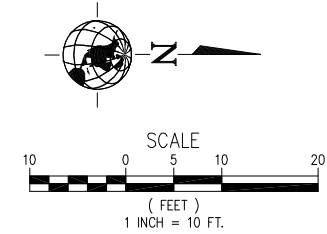
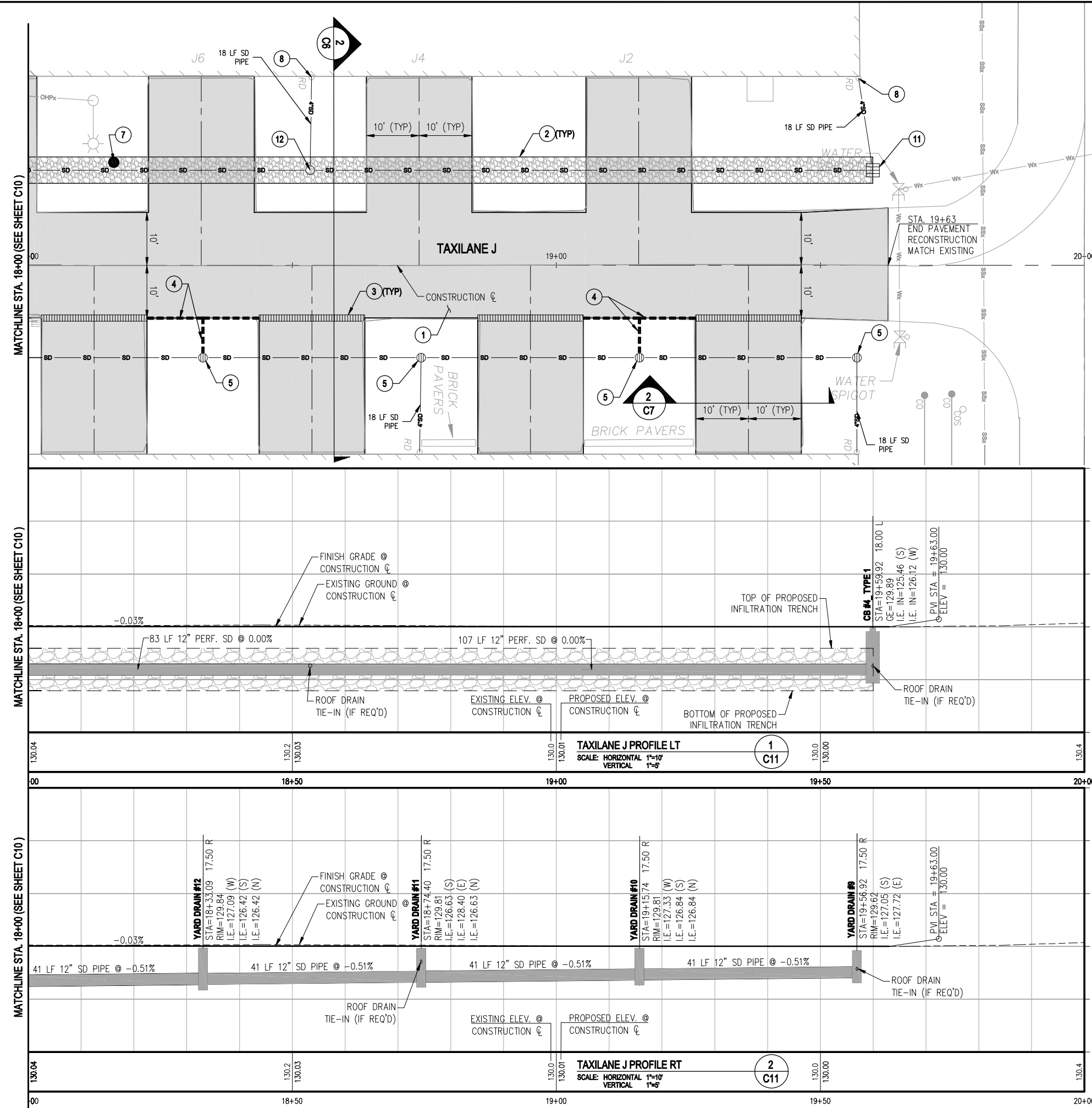
12100 NE 195th St, Ste 300
 Auburn, WA 98011
 425-957-4800 Fax: 425-957-4808
 www.whpacific.com

REVISIONS		SHEET INFO	
NO.	BY	WH	DATE
		DESIGNED	
		DRAWN	
		CHECKED	
		FT	
		APPROVED	
		DAF	
		LAST EDIT	2/4/2011
		PLOT DATE	2/4/2011
		SUBMITTAL	

TAXILANE J PLAN & PROFILE
 CITY OF ARLINGTON
 2011 TAXILANE IMPROVEMENTS PROJECT

PROJECT NUMBER: 036137
 DRAWING FILE NAME: 036137-C-PP01
 SCALE: 1"=10'

SHEET NUMBER: **C10**
 10 of 16



- GENERAL NOTES:**
- RECONSTRUCT TAXILANE PAVEMENT.
 - CONSTRUCT INFILTRATION TRENCH, SEE DETAIL **3 C14**
 - INSTALL SLOTTED DRAIN. SEE DETAIL **1 C14**
 - INSTALL SLOTTED DRAIN CONNECTION. SEE DETAIL **2 C14**
 - INSTALL YARD DRAIN. SEE DETAIL **1 C15**
 - INSTALL OBSERVATION WELL. SEE DETAIL **6 C14**
 - CONNECT TO EXISTING ROOF DRAIN. SEE DETAIL **2 C15**
 - INSTALL HYDRODYNAMIC SEPARATOR (HDS) WITH SCREEN. SEE DETAIL **3 C15**
 - RELOCATE PHONE BY OTHERS (FRONTIER). CONTRACTOR SHALL COORDINATE WITH BARB ROBINSON AT 360-757-7624 A MINIMUM OF 10 DAYS PRIOR TO REQUIRED ADJUSTMENT.
 - INSTALL TYPE 1 CATCH BASIN PER WSDOT STD PLAN B-5.20-00.
 - CONNECT ROOF DRAIN TO INFILTRATION TRENCH. SEE DETAIL **2 C15**

LEGEND:

- SLOTTED DRAIN
- INFILTRATION TRENCH
- 12" STORM DRAIN PIPE - TYPE PER PLAN/PROFILE
- 4" SD PIPE - ROOF DRAIN
- 6" SD PIPE - SLOTTED DRAINS
- DITCH BOTTOM
- CUT LIMITS
- 12" YARD DRAIN
- TYPE 1 CATCH BASIN
- HYDRODYNAMIC SEPARATOR (HDS)

CONSTRUCTION NOTES:

- ROOF DRAIN CONNECTION TO THE PROPOSED DRAINAGE STRUCTURES IS NECESSARY ONLY IF THE EXISTING ROOF DRAIN OUTLET PIPES ARE DISTURBED DURING CONSTRUCTION.



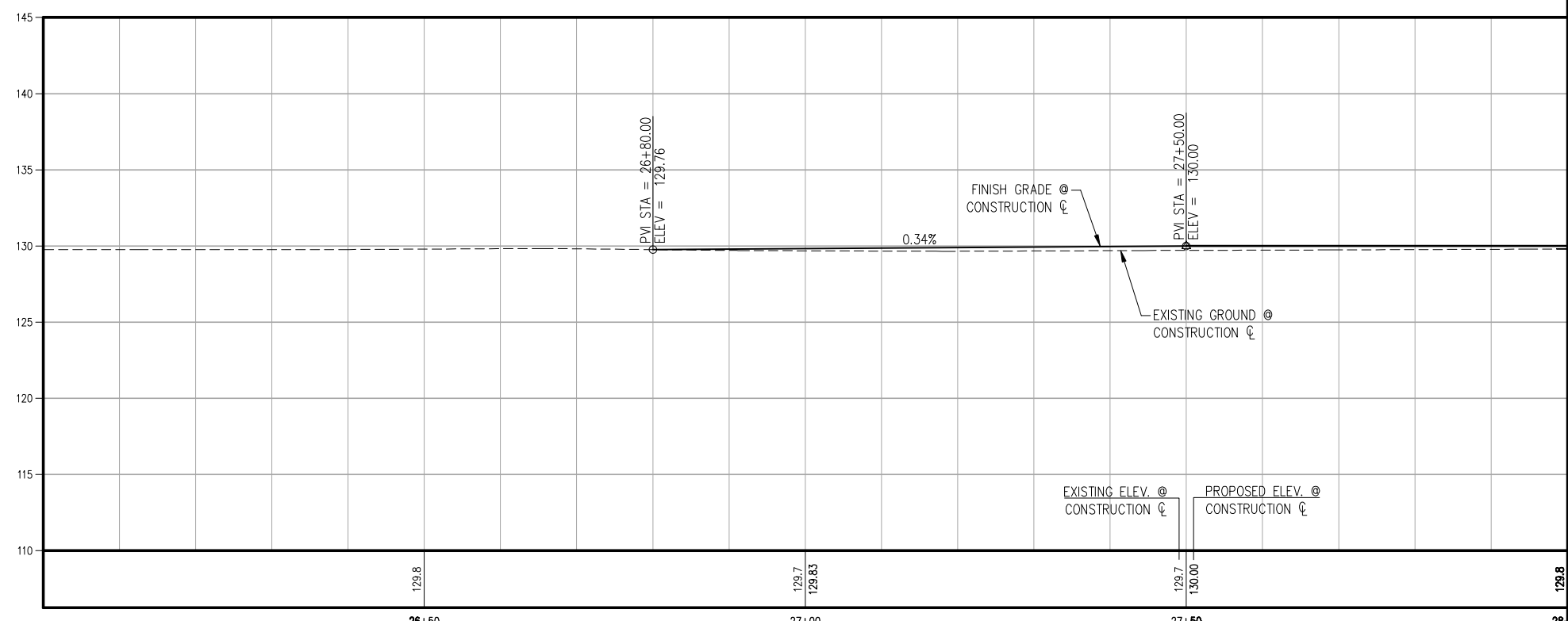
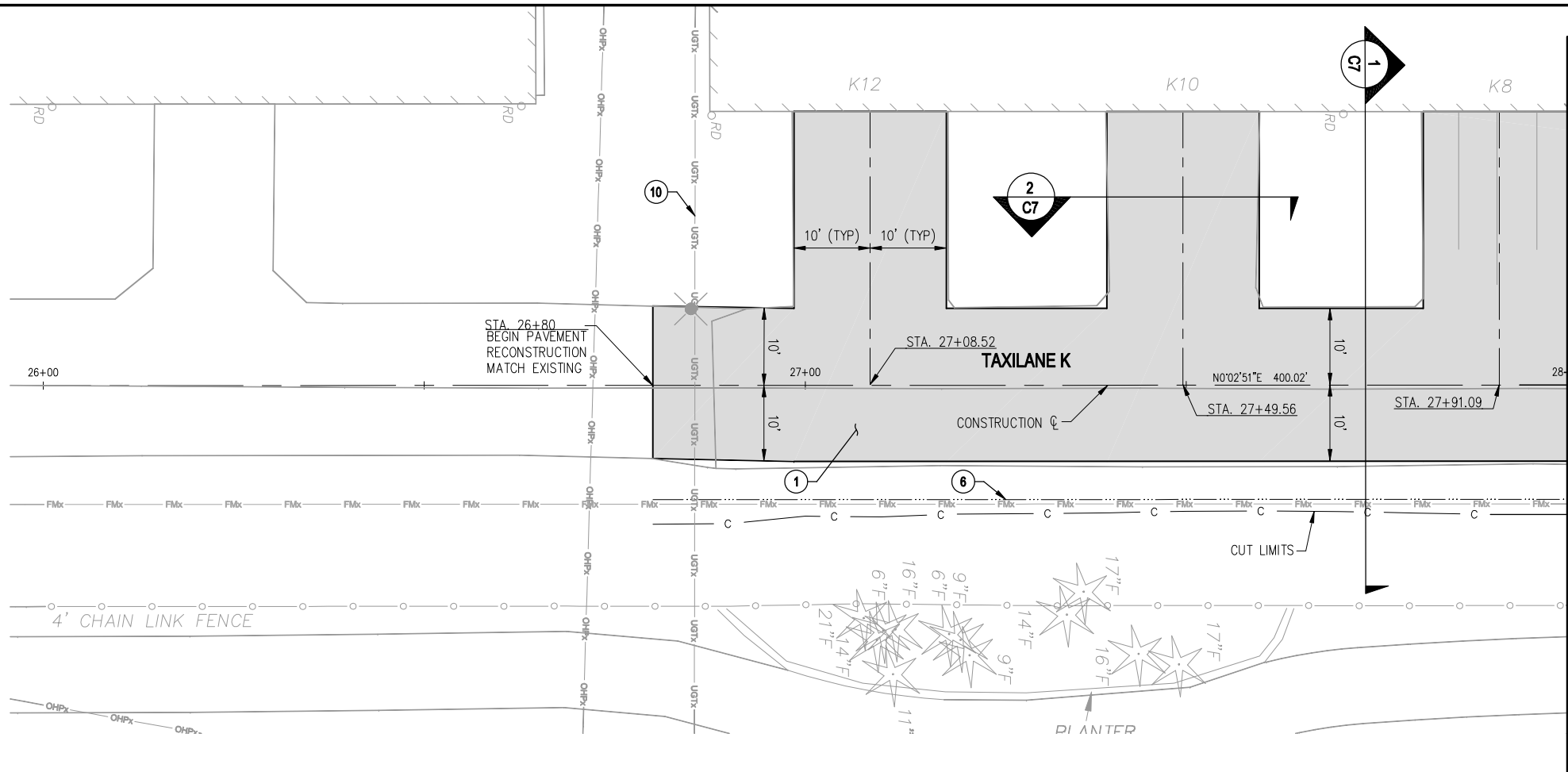
12100 NE 195th St, Ste 300
 Auburn, WA 98011
 425-951-4800 Fax: 425-951-4808
 www.whpacific.com

REVISIONS		SHEET INFO	
NO.	BY	WH	DATE
		DESIGNED	
		DRAWN	
		CHECKED	
		APPROVED	
		LAST EDIT	
		PLOT DATE	
		SUBMITTAL	

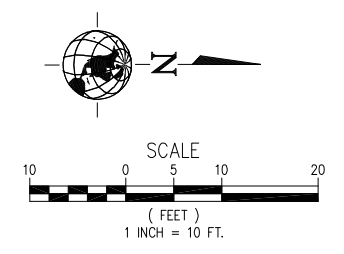
**TAXILANE J
 PLAN & PROFILE**
 CITY OF ARLINGTON
 2011 TAXILANE IMPROVEMENTS PROJECT

PROJECT NUMBER: 036137
 DRAWING FILE NAME: 036137-C-PP01
 SCALE: 1"=10'

SHEET NUMBER
C11
 11 of 16



TAXILANE K PROFILE
 SCALE: HORIZONTAL 1"=10'
 VERTICAL 1"=5'



GENERAL NOTES:

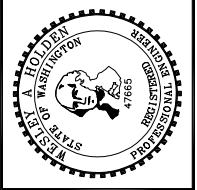
- RECONSTRUCT TAXILANE PAVEMENT.
- GRADE DITCH BOTTOM. SEE TYPICAL SECTION 1
C7
- PRIOR TO ANY WORK NEAR SANITARY SEWER FORCE MAIN, CONTRACTOR SHALL COORDINATE WITH FRED RAPELYEA (CITY OF ARLINGTON) AT 360-403-3540 A MINIMUM OF 5 DAYS IN ADVANCE.
- RELOCATE PHONE BY OTHERS (FRONTIER). CONTRACTOR SHALL COORDINATE WITH BARB ROBINSON AT 360-757-7624 A MINIMUM OF 10 DAYS PRIOR TO REQUIRED ADJUSTMENT.

LEGEND:

- CUT LIMITS
- DITCH BOTTOM



WHPacific
 12100 NE 195th St, Ste 300
 Shoreline, WA 98148
 425-957-4800 Fax 425-951-4808
 www.whpacific.com



REVISIONS	NO.	BY	DATE	REMARKS

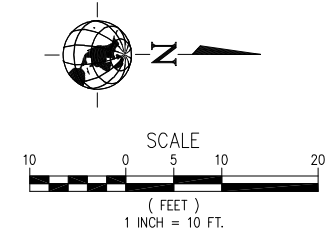
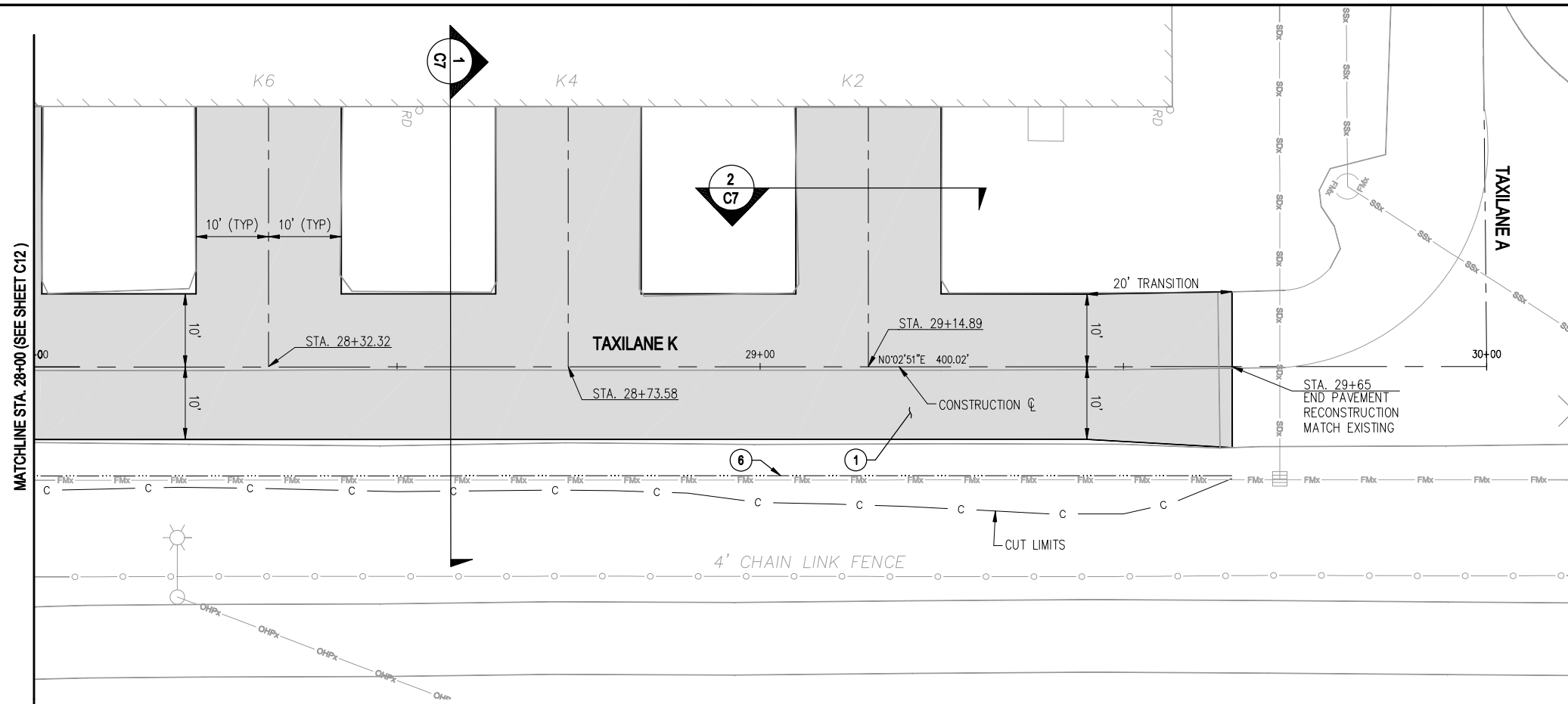
SHEET INFO	
DESIGNED	WH
DRAWN	CMG
CHECKED	FT
APPROVED	DAF
LAST EDIT	2/4/2011
PLOT DATE	2/4/2011
SUBMITTAL	

**TAXILANE K
 PLAN & PROFILE**
 CITY OF ARLINGTON
 2011 TAXILANE IMPROVEMENTS PROJECT

PROJECT NUMBER 036137
 DRAWING FILE NAME 036137-C-PP01
 SCALE 1"=10'

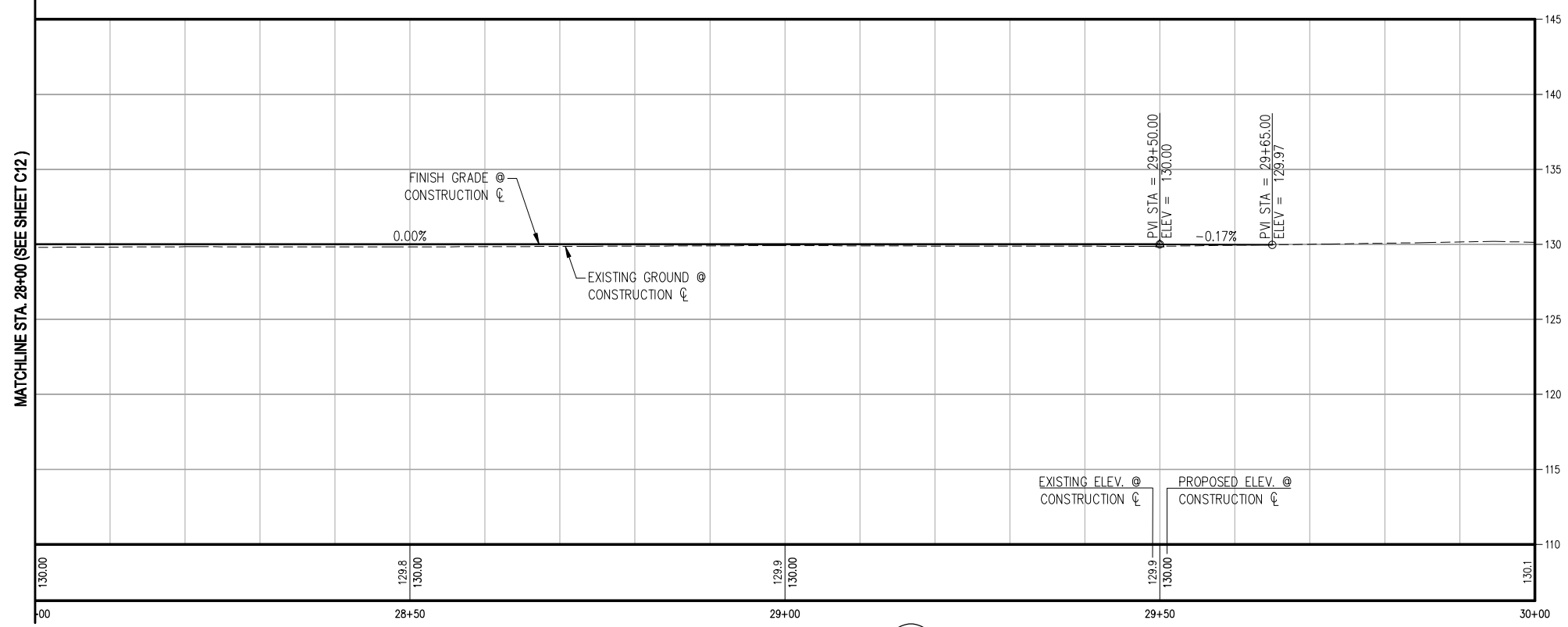
[DATE: 2/4/2011 4:10 PM] [AUTHOR: wholden] [PLOTTER: DMF6 EPlot.pc3] [STYLE: WHP-Standard.ctb] [LAYOUT: PP5]
 [PATH: P:\City of Arlington\Design\Drawings\Civil\036137-C-PP01.dwg]

90% SUBMITTAL



GENERAL NOTES:

1. RECONSTRUCT TAXILANE PAVEMENT.
 6. GRADE DITCH BOTTOM. SEE TYPICAL SECTION.
- PRIOR TO ANY EXCAVATION NEAR SANITARY SEWER FORCE MAIN, CONTRACTOR SHALL COORDINATE WITH FRED RAPELYEA (CITY OF ARLINGTON) AT 360-403-3540 A MINIMUM OF 5 DAYS IN ADVANCE.



LEGEND:

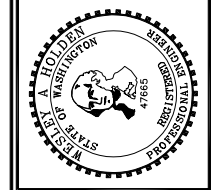
- c — CUT LIMITS
- · — · — DITCH BOTTOM

TAXILANE K PROFILE
 SCALE: HORIZONTAL 1"=10'
 VERTICAL 1"=5'

2
C13

[DATE: 2/4/2011 4:10 PM] [AUTHOR: wholden] [PLOTTER: DMF6 EPlot.pc3] [STYLE: WHP-Standard.ctb] [LAYOUT: PP6]
 [PATH: P:\City of Arlington\036137\Design\Drawings\Civil\036137-C-PP01.dwg]

WHPacific
 12100 NE 195th St, Ste 300
 Shoreline, WA 98148
 425-951-4800 Fax 425-951-4808
 www.whpacific.com



REVISIONS	NO.	BY	DATE	REMARKS

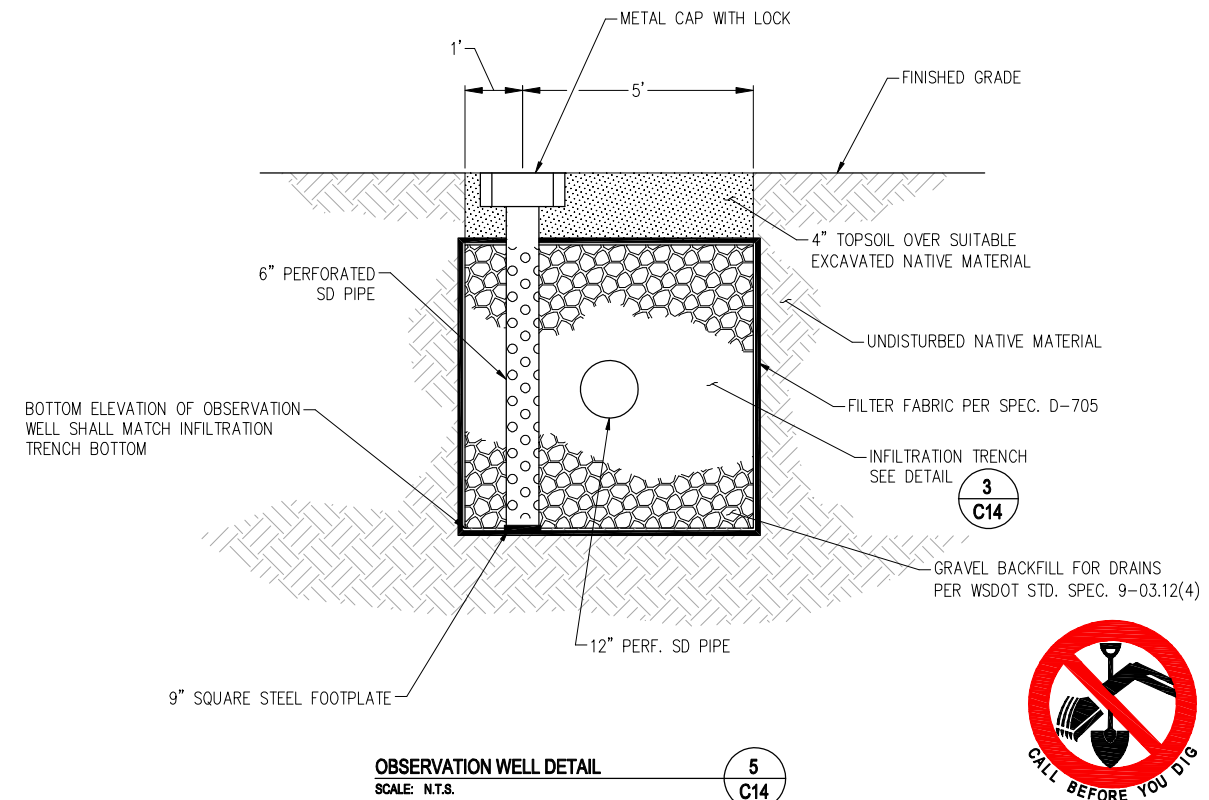
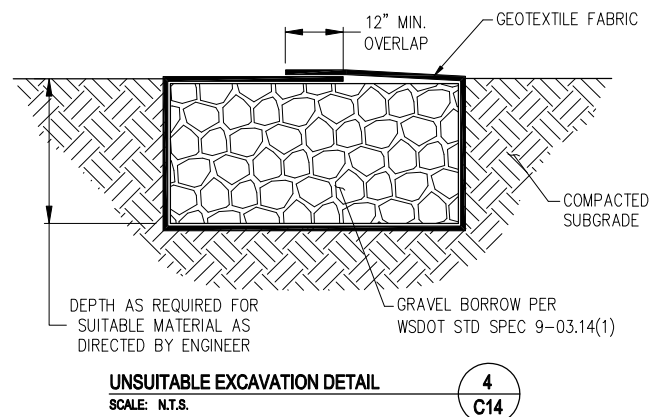
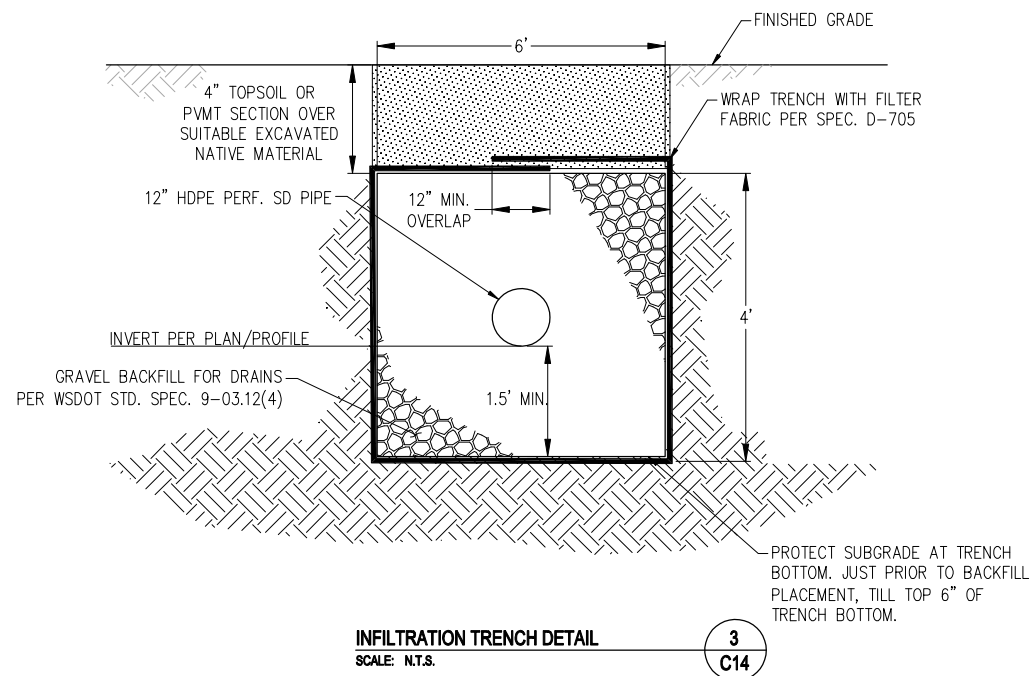
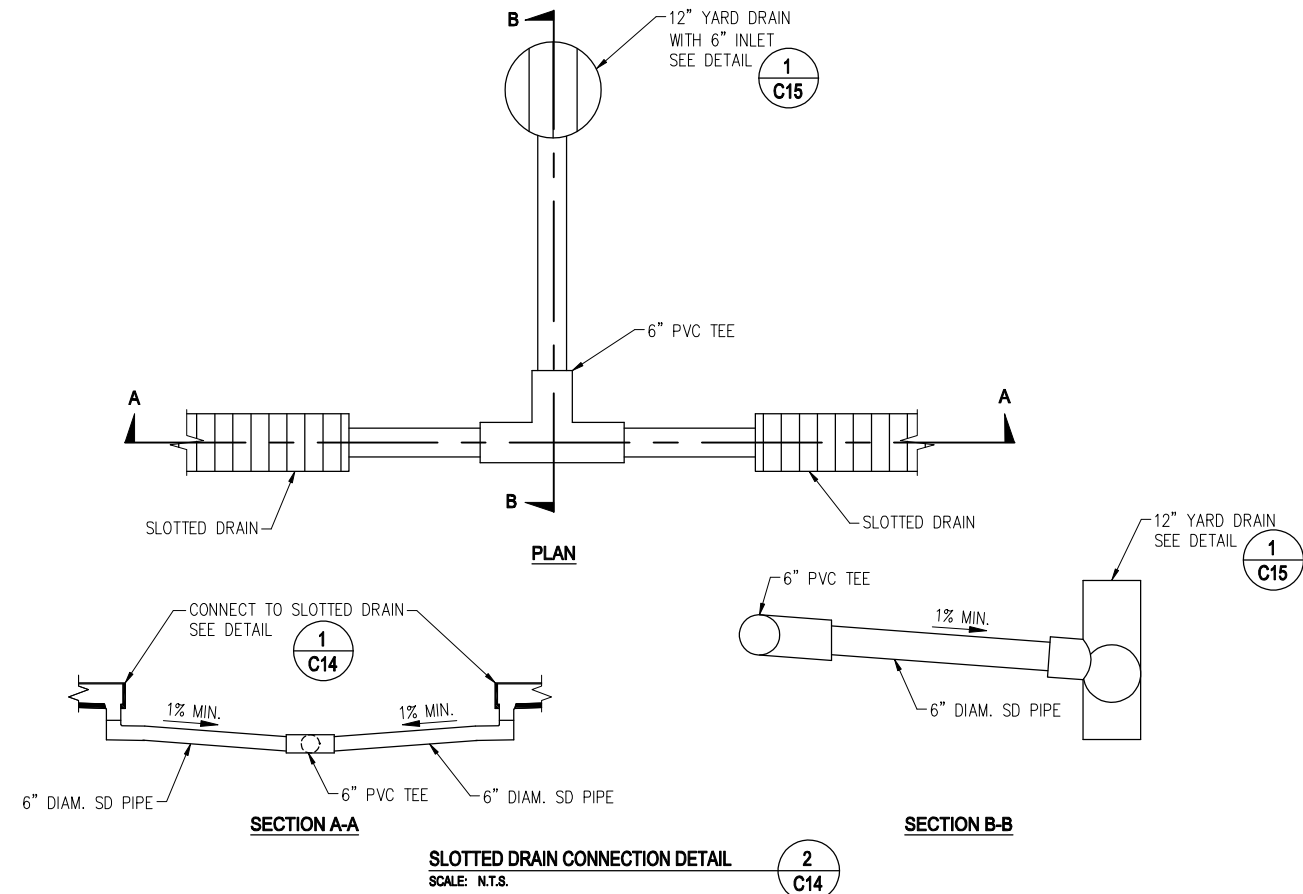
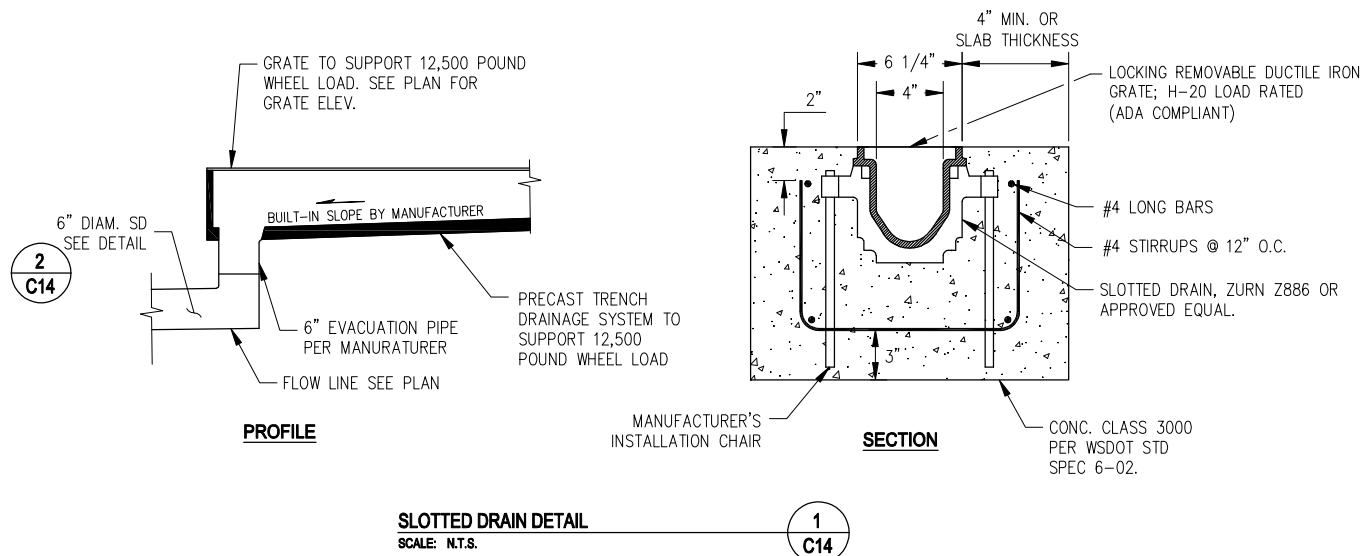
SHEET INFO	WH	CMG	FT	DAF	2/4/2011	2/4/2011
DESIGNED						
DRAWN						
CHECKED						
APPROVED						
LAST EDIT						
PLOT DATE						
SUBMITTAL						

**TAXILANE K
 PLAN & PROFILE**
 CITY OF ARLINGTON
 2011 TAXILANE IMPROVEMENTS PROJECT

PROJECT NUMBER: 036137
 DRAWING FILE NAME: 036137-C-PP01
 SCALE: 1"=10'



90% SUBMITTAL



DATE: 2/4/2011 4:10 PM [AUTHOR: wholden] [PLOTTER: DMF6 EPlot.pc3] [STYLE: WHP-Standard.ctb] [LAYOUT: DT3]
 PATH: P:\City of Arlington\036137\Design Drawings\Civil\036137-C-DT01.dwg

WHPacific
 12100 NE 156th St, Ste 300
 Auburn, WA 98011
 425-861-4600 Fax 425-861-4608
 www.whpacific.com



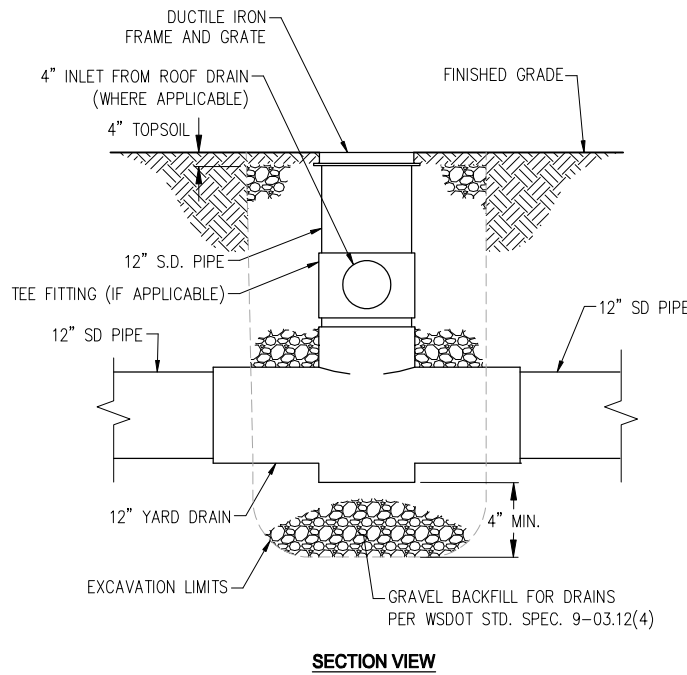
REVISIONS	NO.	BY	DATE	REMARKS

SHEET INFO		WH	CMG	FT	DAF	2/4/2011	2/4/2011
DESIGNED							
DRAWN							
CHECKED							
APPROVED							
LAST EDIT							
PLOT DATE							
SUBMITTAL							

CIVIL DETAILS
 CITY OF ARLINGTON
 2011 TAXILANE IMPROVEMENTS PROJECT
 PROJECT NUMBER 036137
 DRAWING FILE NAME 036137-C-DT01
 SCALE N.T.S.

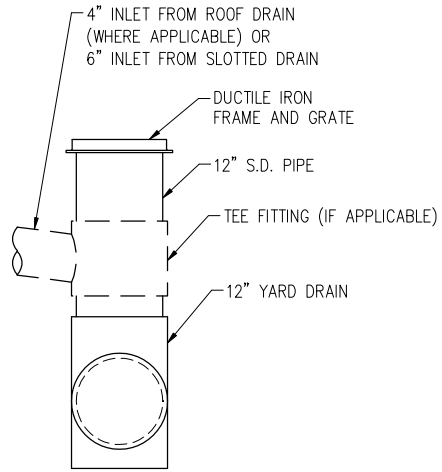


90% SUBMITTAL

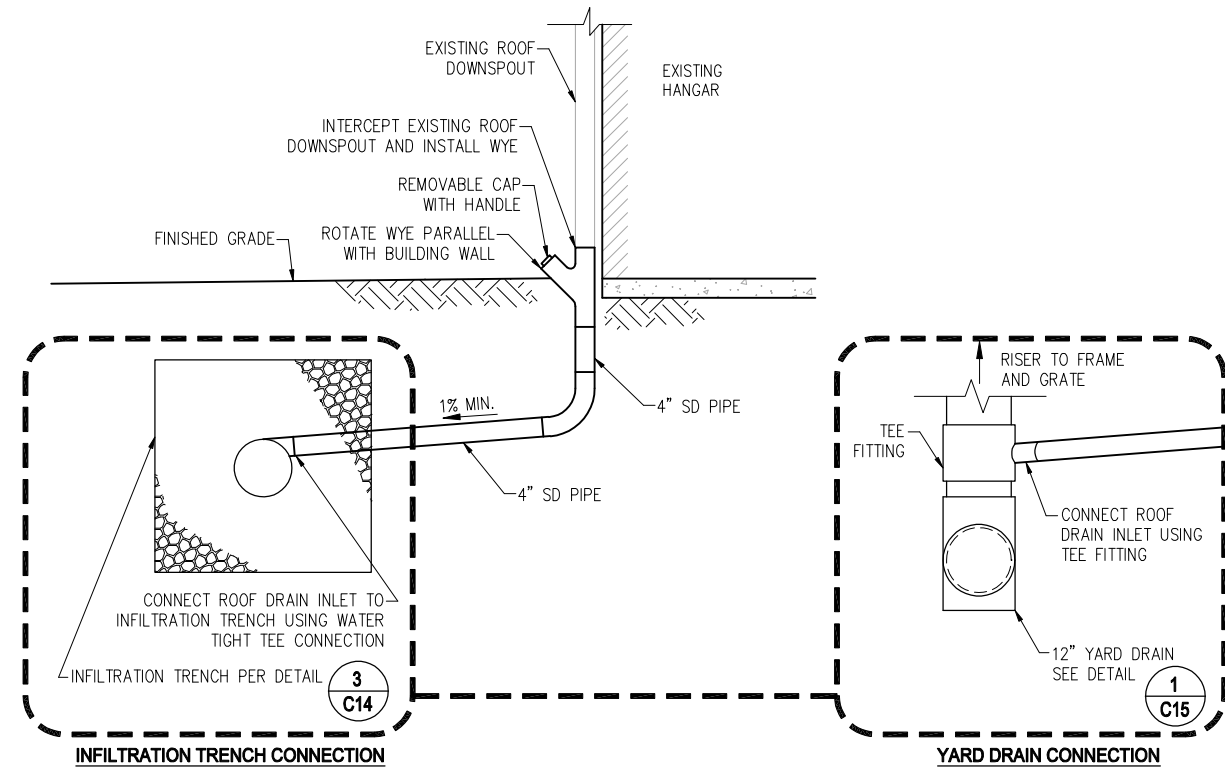


SECTION VIEW

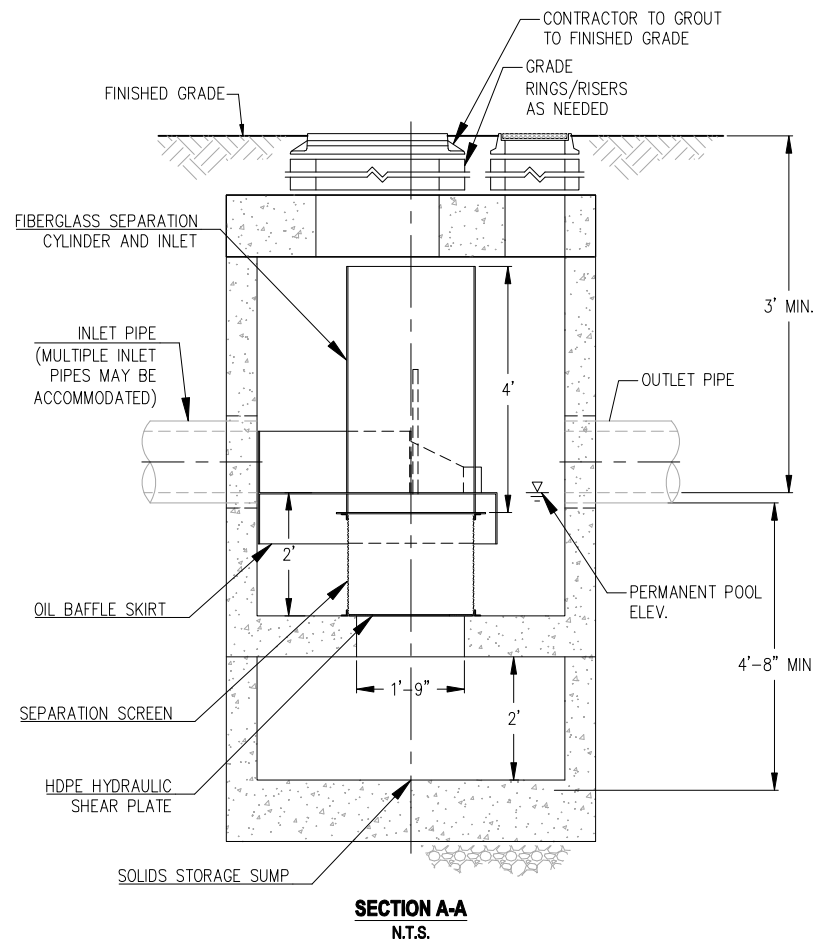
YARD DRAIN DETAIL 1 C15
SCALE: N.T.S.



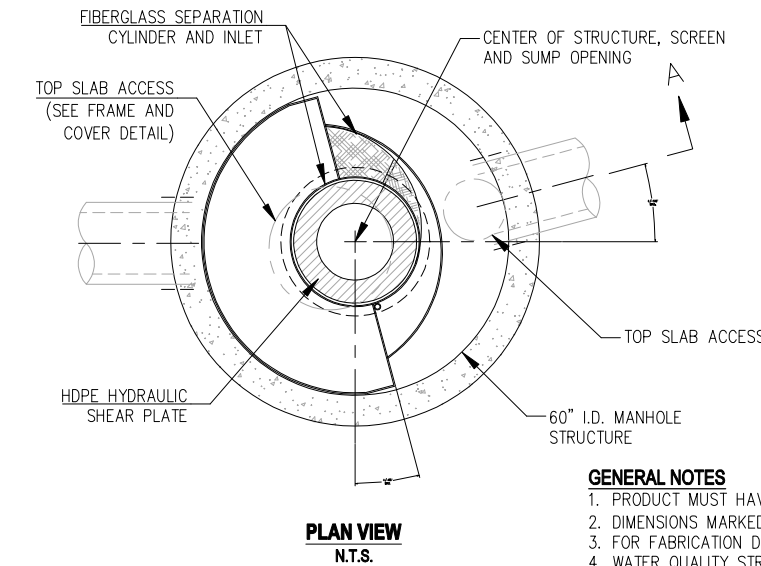
PROFILE VIEW



ROOF DRAIN CONNECTION DETAIL 2 C15
SCALE: N.T.S.



SECTION A-A
N.T.S.



PLAN VIEW
N.T.S.

HYDRODYNAMIC SEPARATOR (HDS) WITH SCREEN DETAIL 3 C15
SCALE: N.T.S.

STRUCTURE DESIGN NOTES

TREATMENT CAPACITY IS 0.7 CFS, OR PER LOCAL REGULATIONS. MAXIMUM HYDRAULIC INTERNAL BYPASS CAPACITY IS 10.0 CFS. IF THE SITE CONDITIONS EXCEED 10.0 CFS, AN UPSTREAM BYPASS STRUCTURE IS REQUIRED.
THE STANDARD CONFIGURATION IS SHOWN.

SITE SPECIFIC DATA REQUIREMENTS

STRUCTURE ID	
WATER QUALITY FLOW RATE (CFS)	0.12
PEAK FLOW RATE (CFS)	2.8
RETURN PERIOD OF PEAK FLOW (YRS)	100
SCREEN APERTURE (2400 OR 4700)	2400
PIPE DATA:	I.E. MATERIAL DIAMETER
INLET PIPE 1	* * 12"
INLET PIPE 2	* * 12"
OUTLET PIPE	* * 12"
RIM ELEVATION	*
ANTI-FLOTATION BALLAST WIDTH	*
ANTI-FLOTATION BALLAST HEIGHT	*
NOTES/SPECIAL REQUIREMENTS:	
* SEE PLAN/PROFILE	

FRAME AND COVER (24" DIAMETER)
N.T.S.

GENERAL NOTES

1. PRODUCT MUST HAVE DOE GENERAL USE DESIGNATION FOR PRETREATMENT APPROVAL.
2. DIMENSIONS MARKED WITH () ARE REFERENCE DIMENSIONS. ACTUAL DIMENSIONS MAY VARY.
3. FOR FABRICATION DRAWINGS WITH DETAILED STRUCTURE DIMENSIONS AND WEIGHTS, PLEASE CONTACT THE ENGINEER.
4. WATER QUALITY STRUCTURE SHALL BE IN ACCORDANCE WITH ALL DESIGN DATA AND INFORMATION CONTAINED IN THIS DRAWING.
5. STRUCTURE AND CASTINGS SHALL MEET AASHTO HS20 LOAD RATING.
6. HDPE HYDRAULIC SHEAR PLATE IS PLACED ON SHELF AT BOTTOM OF SCREEN CYLINDER. REMOVE AND REPLACE AS NECESSARY DURING MAINTENANCE CLEANING.

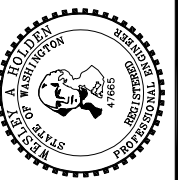
INSTALLATION NOTES

1. ANY SUB-BASE, BACKFILL DEPTH, AND/OR ANTI-FLOTATION PROVISIONS ARE SITE-SPECIFIC DESIGN CONSIDERATIONS AND SHALL BE AS SPECIFIED.
2. CONTRACTOR TO PROVIDE EQUIPMENT WITH SUFFICIENT LIFTING AND REACH CAPACITY TO LIFT AND SET THE MANHOLE STRUCTURE (LIFTING CLUTCHES PROVIDED).
3. CONTRACTOR TO ADD JOINT SEALANT BETWEEN ALL STRUCTURE SECTIONS, AND ASSEMBLE STRUCTURE.
4. CONTRACTOR TO PROVIDE, INSTALL, AND GROUT PIPES. MATCH PIPE INVERTS WITH ELEVATIONS SHOWN.
5. CONTRACTOR TO TAKE APPROPRIATE MEASURES TO ASSURE UNIT IS WATER TIGHT, HOLDING WATER TO FLOWLINE INVERT MINIMUM. IT IS SUGGESTED THAT ALL JOINTS BELOW PIPE INVERTS ARE GROUTED.



90% SUBMITTAL

WHPacific
12100 NE 156th St, Ste 300
Bellevue, WA 98011
425-951-4600 Fax 425-951-4608
www.whpacific.com

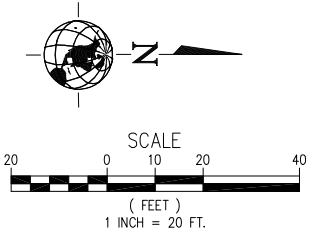
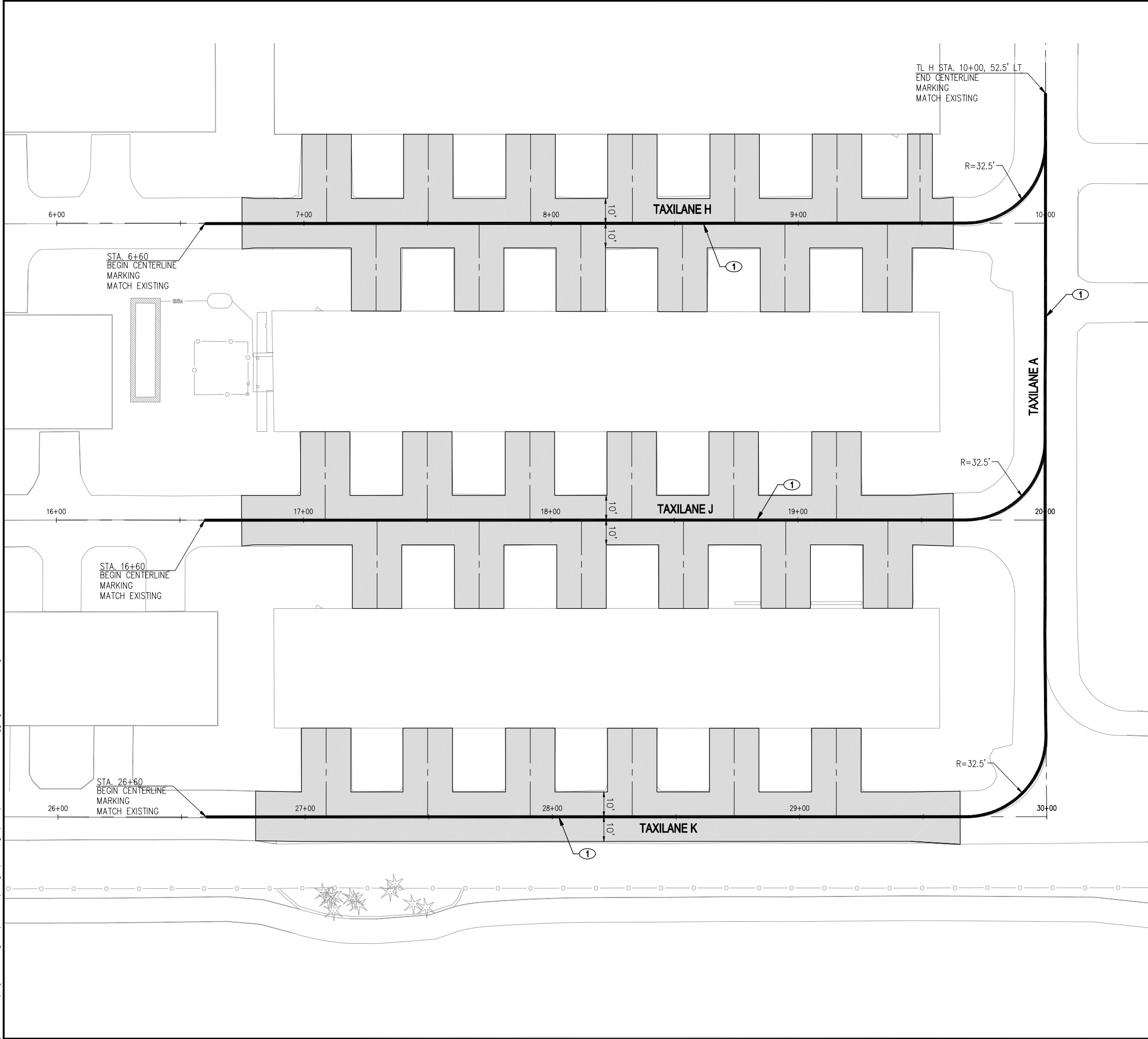


REVISIONS	NO.	BY	DATE	REMARKS

SHEET INFO	DESIGNED	WH	CMG	FT	DAF	LAST EDIT	2/4/2011	2/4/2011	SUBMITTAL

CIVIL DETAILS
CITY OF ARLINGTON
2011 TAXILANE IMPROVEMENTS PROJECT
PROJECT NUMBER 036137
DRAWING FILE NAME 036137-C-DT01
SCALE N.T.S.

SHEET NUMBER
C15
15 of 16



KEY NOTES: ①

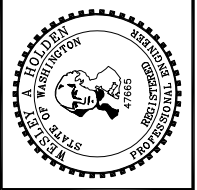
1. STRIPE 6" WIDE YELLOW TAXILANE CENTERLINE MARKING.

LEGEND:

— TAXILANE CENTERLINE STRIPING

[DATE: 2/4/2011 4:10 PM] [AUTHOR: wholeden] [PLOTTER: DMF6 EPlot.pc3] [STYLE: WHP-Standard.ctb] [LAYOUT: MP1]
 [PATH: P:\City of Arlington\Design\Drawings\Civil\036137-C-MP01.dwg]

WHPacific
 12100 NE 196th St, Ste 300
 Redmond, WA 98071
 425-951-4600 Fax: 425-951-4808
 www.whpacific.com



REVISIONS	NO.	BY	DATE	REMARKS

SHEET INFO		WH	CMG	FT	DAF	2/4/2011	2/4/2011
DESIGNED							
DRAWN							
CHECKED							
APPROVED							
LAST EDIT							
PLOT DATE							
SUBMITTAL							

MARKING PLAN
 CITY OF ARLINGTON
 2011 TAXILANE IMPROVEMENTS PROJECT
 PROJECT NUMBER 036137
 DRAWING FILE NAME 036137-C-MP01
 SCALE 1"=20'



90% SUBMITTAL

SHEET NUMBER
C16
 16 of 16