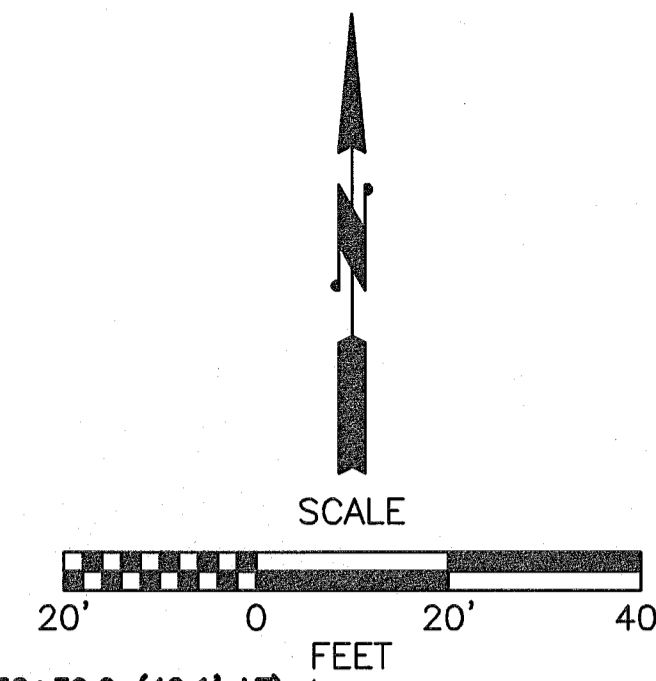
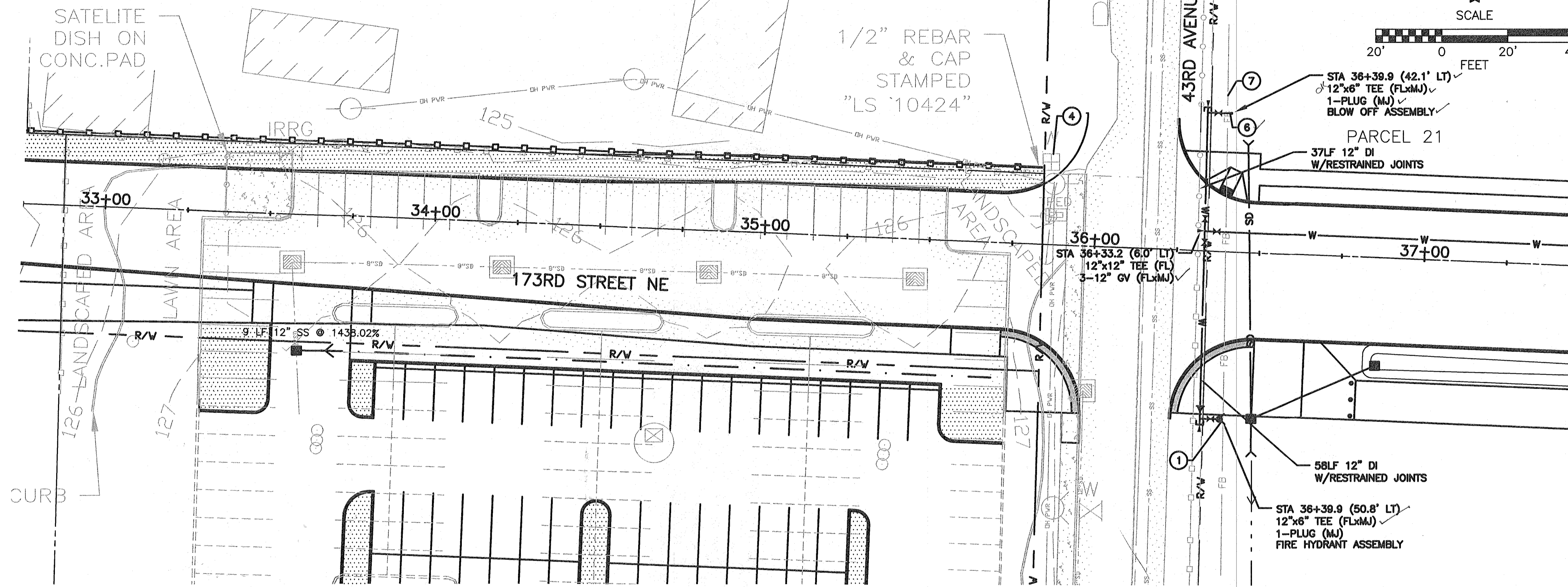


Oct 03 2013 - 4:33 pm tsekulich \\sullivan\City of Arlington\City of Projects\20110044 - 173rd St Extension\CADD\Plan Sheets\20110044\WS.dwg Layout Name: WS (1)



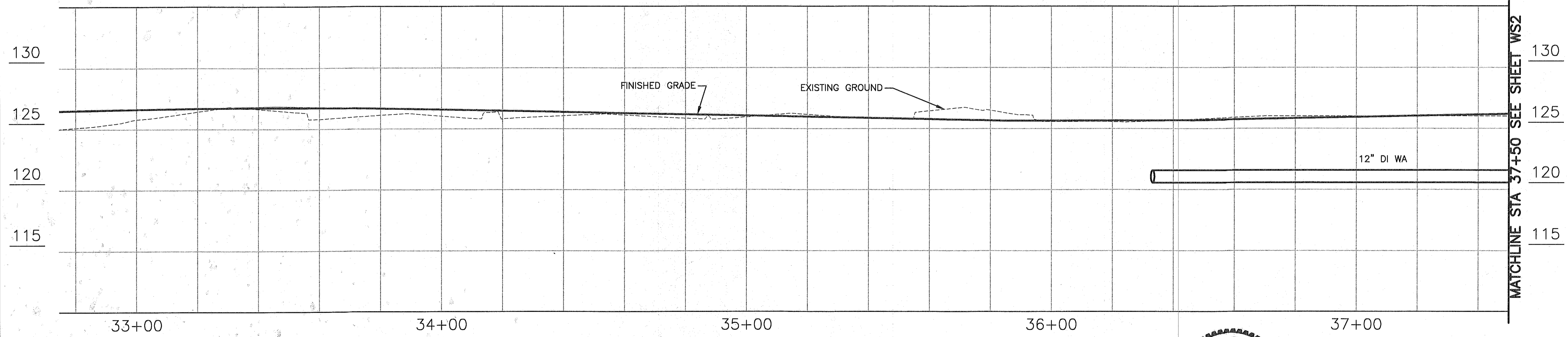
WATER AND SEWER NOTES:

- 1 FIRE HYDRANT ASSEMBLY PER COA STD PLAN W-010. SET HYDRANT 3' FROM BACK OF SIDEWALK WHERE PRESENT.
- 2 2" COMMERCIAL WATER SERVICE PER COA STD DETAIL W-050. INSTALL ENTIRE SERVICE EXCEPT METER. SET METER BOX AT EXISTING GRADE THEN BURY UNDER 2' DEPTH PILE OF SOIL FOR PROTECTION. METER TO BE INSTALLED AT LATER DATE BY THE CITY.
- 3 SANITARY SIDE SEWER PER COA STD DETAIL SS090 AND DETAIL. MAINTAIN 7' MINIMUM COVER AT PROPERTY LINE.
- 4 ADJUST WATER METER BOX TO GRADE.
- 5 NOT USED.
- 6 2" BLOW OFF ASSEMBLY PER COA STD PLAN W-180.
- 7 APPROXIMATE UTILITY LOCATION CONTRACTOR TO LOCATE UTILITIES PRIOR TO BEGINNING EXCAVATION. NOTIFY ENGINEER OF CONFLICTS.
- 8 TAPPING TEE PER COA STD PLAN W-200. Addendum 1
- 9 SANITARY SEWER MANHOLE PER COA STD DETAIL SS-010.
- 10 FILL LOW AREA WITH GRAVEL BORROW TO PROVIDE MIN 3.0' COVER OVER WATERLINE 10.0' MIN ON EACH SIDE OF WATER MAIN. CONSTRUCT IN ACCORDANCE WITH SECTION 2-03.3(14) OF THE STANDARD SPECIFICATIONS.
- 11 SAWCUT EXISTING PAVEMENT, SIDEWALK OR CURB AND GUTTER.
- 12 PAVEMENT RESTORATION PER DETAIL MD3.
- 13 NOT USED.

GENERAL NOTE:

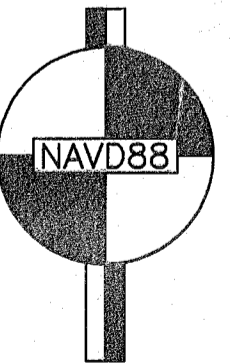
SEE WATER AND SEWER GENERAL NOTES ON SHEET WS8.

MATCHLINE STA 37+50 SEE SHEET WS2



MATCHLINE STA 37+50 SEE SHEET WS2

CALL 2 BUSINESS DAYS BEFORE YOU DIG
1 800 424-5555
UTILITIES UNDERGROUND LOCATION CENTER

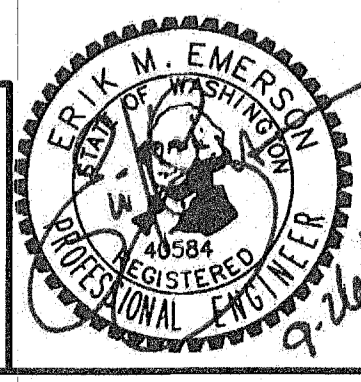


No.	Date	Revision	By	Appr.
1	10/9/13	Addendum 1		

Perteeet
425-252-7700 | 1-800-615-9900
2707 Colby Avenue, Suite 900
Everett, Washington 98201

CITY OF ARLINGTON
APPROVED FOR CONSTRUCTION
JAMES KELLY, PE
PUBLIC WORKS DIRECTOR
DATE APPROVED

BID SUBMITTAL

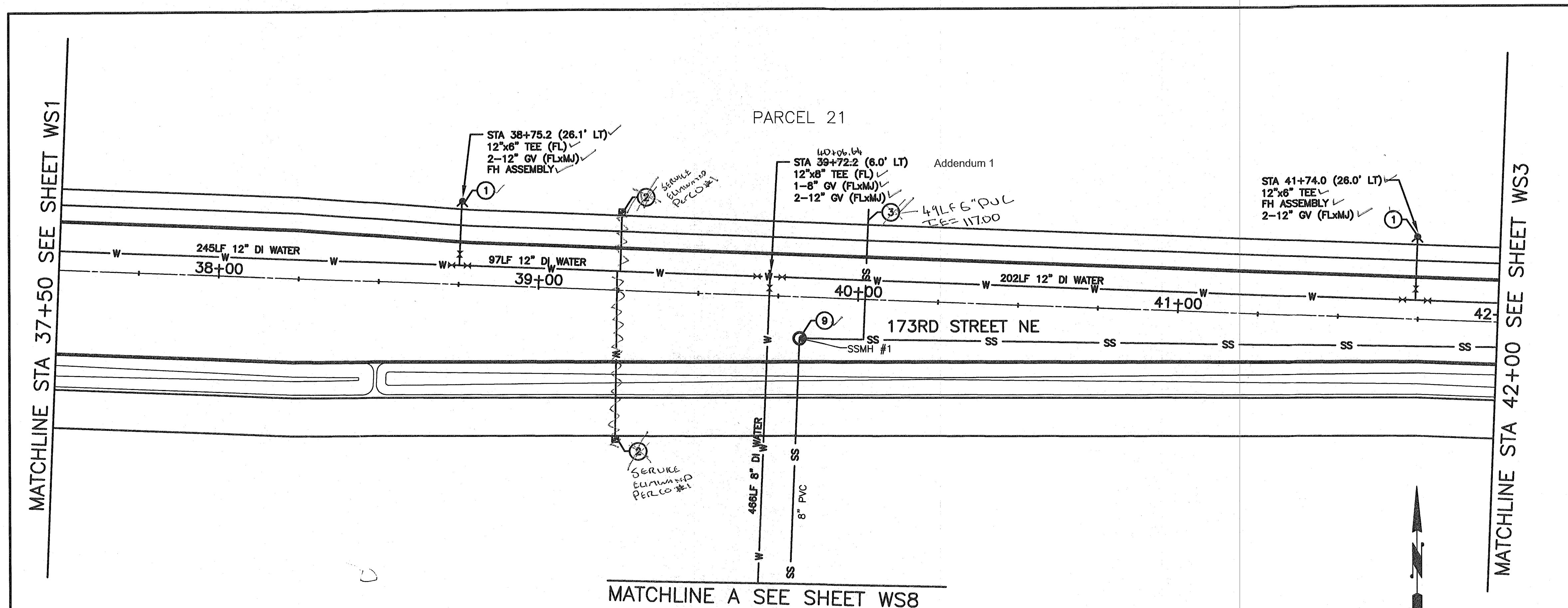


Drawn By	Date	SCALE
MMC	10/8/13	Horiz 1"=20'
Designed By	Date	Vert 1"=5'
EE	10/8/13	Project Number 20110044
Checked By	Date	
DCS	10/8/13	
Approved By		

CITY OF ARLINGTON
173RD STREET NE EXTENSION
WATER & SEWER PLAN

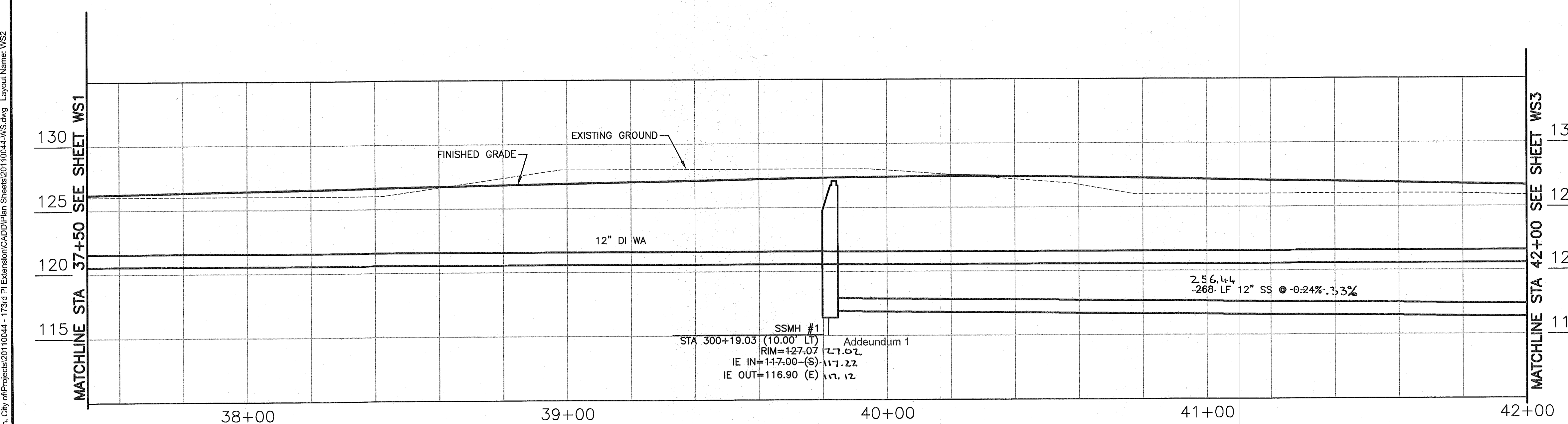
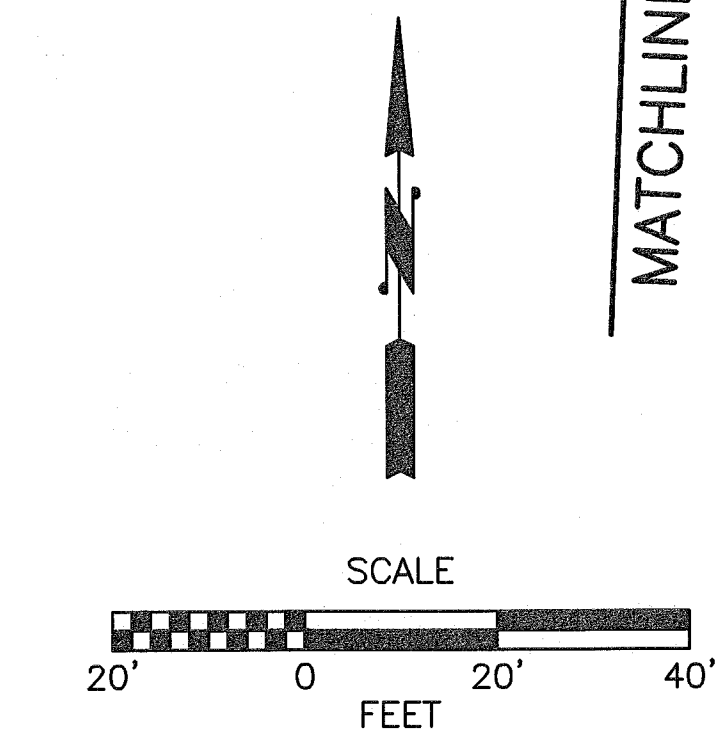
Drawing No.	WS1
Sheet No.	
of Total	

C:\05_2013_431pm\isulch\X:\Arllington_City\off\Projects\20110044 - 173rd Pl Extension\CADD\Plan Sheets\20110044-WS.dwg Layout Name: WS2



- WATER AND SEWER NOTES:**
- ① FIRE HYDRANT ASSEMBLY PER COA STD PLAN W-010. SET HYDRANT 3' FROM BACK OF SIDEWALK WHERE PRESENT.
 - ② 2" COMMERCIAL WATER SERVICE PER COA STD DETAIL W-050. INSTALL ENTIRE SERVICE EXCEPT METER. SET METER BOX AT EXISTING GRADE THEN BURY UNDER 2' DEPTH PILE OF SOIL FOR PROTECTION. METER TO BE INSTALLED AT LATER DATE BY THE CITY.
 - ③ SANITARY SIDE SEWER PER COA STD DETAIL SS090 AND DETAIL. MAINTAIN 7' MINIMUM COVER AT PROPERTY LINE.
 - ④ ADJUST WATER METER BOX TO GRADE.
 - ⑤ NOT USED.
 - ⑥ 2" BLOW OFF ASSEMBLY PER COA STD PLAN W-180.
 - ⑦ APPROXIMATE UTILITY LOCATION CONTRACTOR TO LOCATE UTILITIES PRIOR TO BEGINNING EXCAVATION. NOTIFY ENGINEER OF CONFLICTS.
 - ⑧ TAPPING TEE PER COA STD PLAN W-200. Addendum 1
 - ⑨ SANITARY SEWER MANHOLE PER COA STD DETAIL SS-010.
 - ⑩ FILL LOW AREA WITH GRAVEL BORROW TO PROVIDE MIN 3.0' COVER OVER WATERLINE 10.0' MIN ON EACH SIDE OF WATER MAIN. CONSTRUCT IN ACCORDANCE WITH SECTION 2-03.3(14) OF THE STANDARD SPECIFICATIONS.
 - ⑪ SAWCUT EXISTING PAVEMENT, SIDEWALK OR CURB AND GUTTER.
 - ⑫ PAVEMENT RESTORATION PER DETAIL MD3.
 - ⑬ NOT USED.

GENERAL NOTE:
SEE WATER AND SEWER GENERAL NOTES ON SHEET WS8.



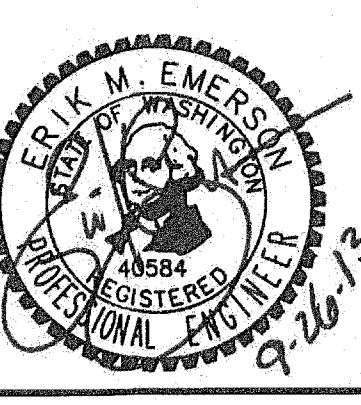
CALL 2 BUSINESS DAYS BEFORE YOU DIG
1 800 424-5555
UTILITIES UNDERGROUND LOCATION CENTER

No.	Date	Description	By	Appr.
1	10/9/13	Addendum 1		

Perteet
425-252-7700 | 1-800-615-9900
2707 Colby Avenue, Suite 900
Everett, Washington 98201

CITY OF ARLINGTON
APPROVED FOR CONSTRUCTION
JAMES KELLY, PE
PUBLIC WORKS DIRECTOR
DATE APPROVED

BID SUBMITTAL

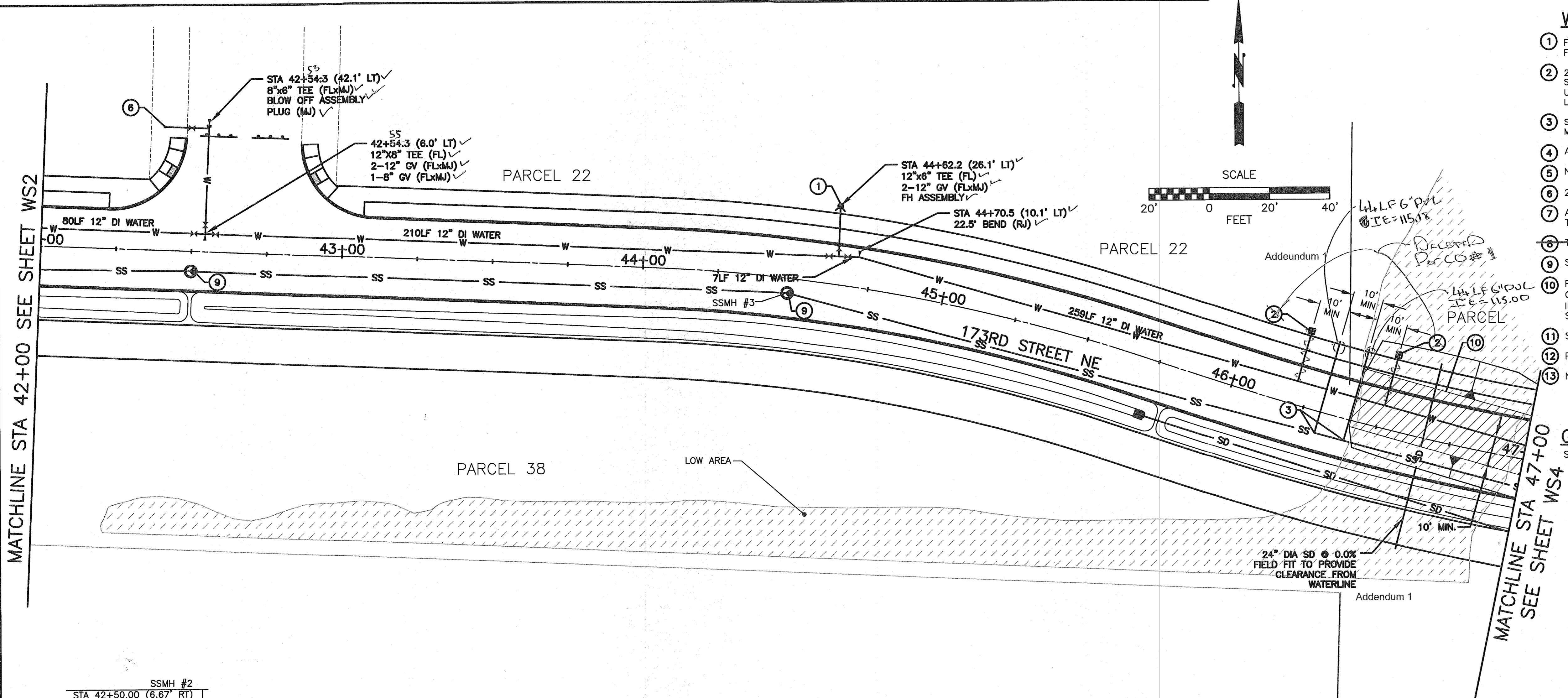


Drawn By	Date
MMG	10/9/13
Designed By	
EE	10/8/13
Checked By	
DCS	10/9/13
Approved By	

CITY OF ARLINGTON
173RD STREET NE EXTENSION
WATER & SEWER PLAN

SCALE
Horiz 1"=20'
Vert 1"=5'
Project Number 20110044

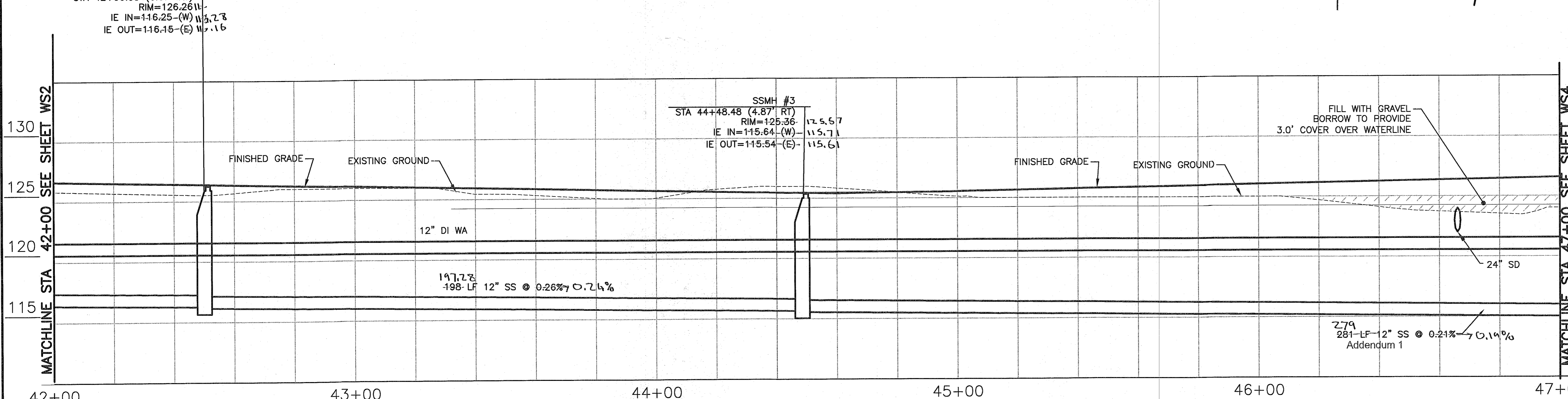
Drawing No. WS2
Sheet No. of Total



WATER AND SEWER NOTES:

- ① FIRE HYDRANT ASSEMBLY PER COA STD PLAN W-010. SET HYDRANT 3' FROM BACK OF SIDEWALK WHERE PRESENT.
- ② 2" COMMERCIAL WATER SERVICE PER COA STD DETAIL W-050. INSTALL ENTIRE SERVICE EXCEPT METER. SET METER BOX AT EXISTING GRADE THEN BURY UNDER 2' DEPTH PILE OF SOIL FOR PROTECTION. METER TO BE INSTALLED AT LATER DATE BY THE CITY.
- ③ SANITARY SIDE SEWER PER COA STD DETAIL SS090 AND DETAIL. MAINTAIN 7' MINIMUM COVER AT PROPERTY LINE.
- ④ ADJUST WATER METER BOX TO GRADE.
- ⑤ NOT USED.
- ⑥ 2" BLOW OFF ASSEMBLY PER COA STD PLAN W-180.
- ⑦ APPROXIMATE UTILITY LOCATION CONTRACTOR TO LOCATE UTILITIES PRIOR TO BEGINNING EXCAVATION. NOTIFY ENGINEER OF CONFLICTS.
- ⑧ TAPPING TEE PER COA STD PLAN W-200. Addendum 1
- ⑨ SANITARY SEWER MANHOLE PER COA STD DETAIL SS-010.
- ⑩ FILL LOW AREA WITH GRAVEL BORROW TO PROVIDE MIN 3.0' COVER OVER WATERLINE 10.0' MIN ON EACH SIDE OF WATER MAIN. CONSTRUCT IN ACCORDANCE WITH SECTION 2-03.3(14) OF THE STANDARD SPECIFICATIONS.
- ⑪ SAWCUT EXISTING PAVEMENT, SIDEWALK OR CURB AND GUTTER.
- ⑫ PAVEMENT RESTORATION PER DETAIL MD3.
- ⑬ NOT USED.

GENERAL NOTE:
SEE WATER AND SEWER GENERAL NOTES ON SHEET WS8.



No.	Date	Revision	By	Appr.
1	10/9/13	Addendum 1		

Perteet
425-252-7700 | 1-800-615-9900
2707 Colby Avenue, Suite 900
Everett, Washington 98201

APPROVED FOR CONSTRUCTION
JAMES KELLY, PE
PUBLIC WORKS DIRECTOR
DATE APPROVED

BID SUBMITTAL



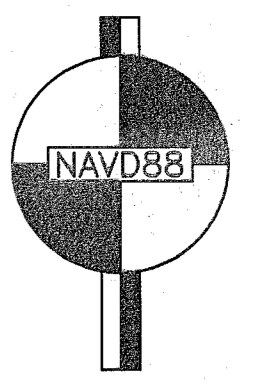
Drawn By	Date
Designed By	10/9/13
Checked By	10/8/13
Approved By	10/8/13

SCALE	Horiz	1"=20'
	Vert	1"=5'
Project Number	20110044	

CITY OF ARLINGTON
173RD STREET NE EXTENSION
WATER & SEWER PLAN

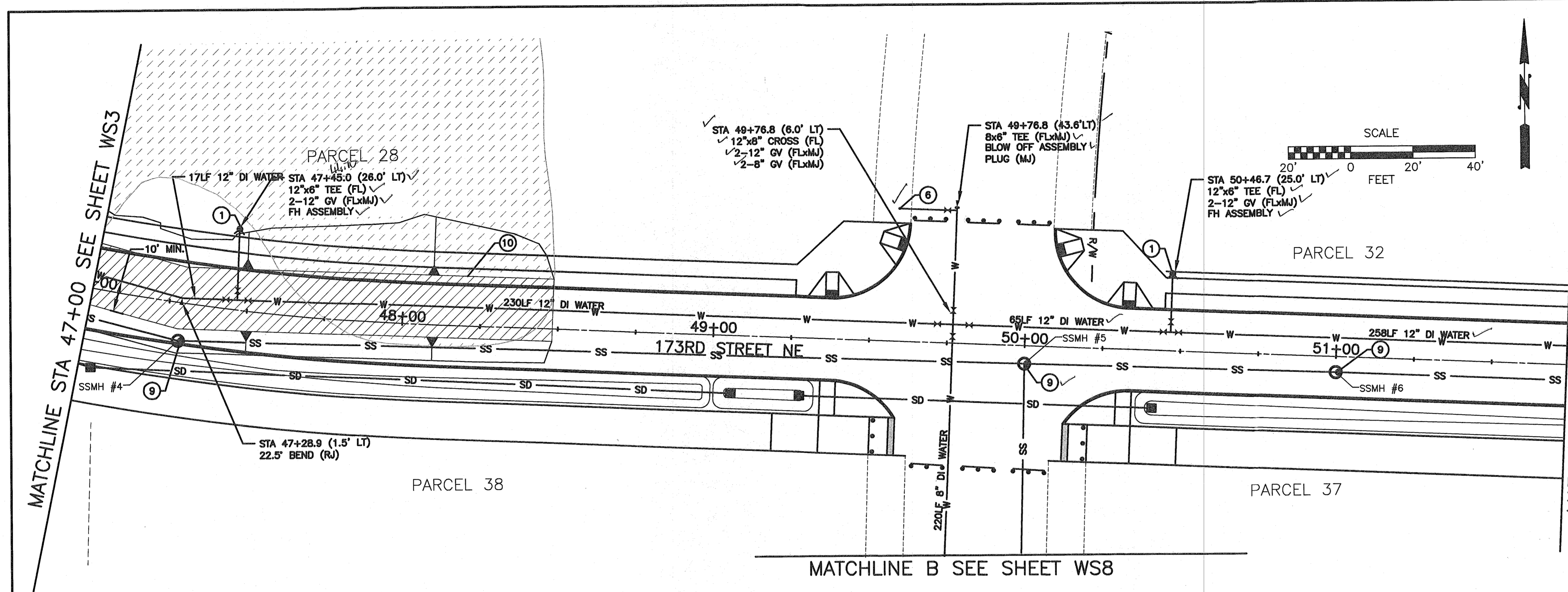
Drawing No.	WS3
Sheet No.	
of Total	

CALL 2 BUSINESS DAYS BEFORE YOU DIG
1 800 424-5555
UTILITIES UNDERGROUND LOCATION CENTER



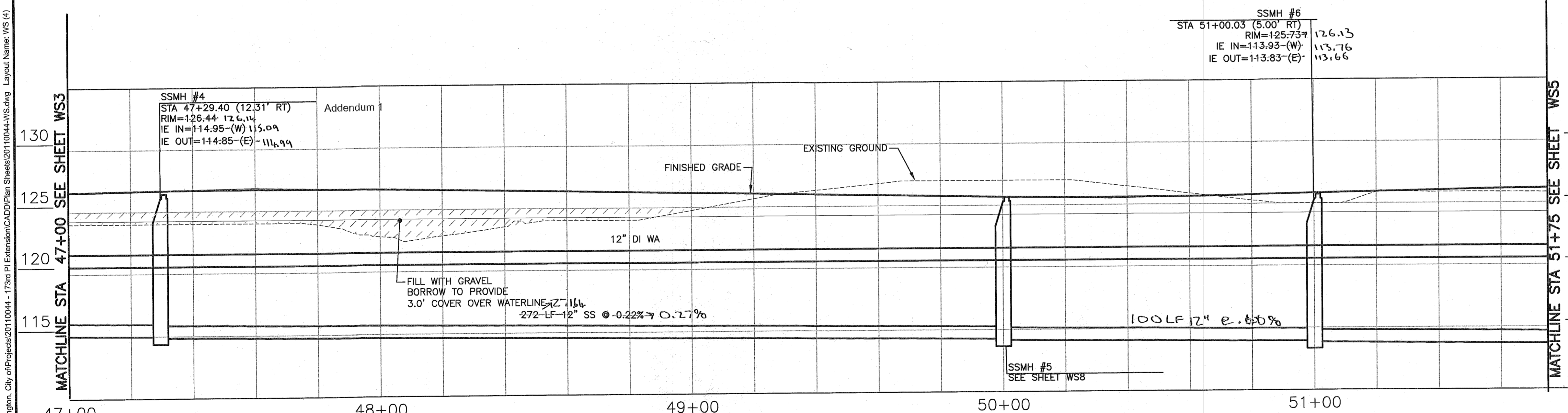
Oct 03, 2013 - 4:32pm isekulch X:\Arlington_City_of_Projects\20110044 - 173rd St NE Extension\CAD\Plan_Sheets\20110044-WS.dwg Layout Name: WS (3)

Oct 03, 2013 - 4:32pm Isekulch, City of Arlington, City of Extension/CADD/Plan Sheets/20110044-173rd Pl Extension/CADD/Plan Sheets/20110044-WS.dwg Layout Name: WS (4)



- WATER AND SEWER NOTES:**
- ① FIRE HYDRANT ASSEMBLY PER COA STD PLAN W-010. SET HYDRANT 3' FROM BACK OF SIDEWALK WHERE PRESENT.
 - ② 2" COMMERCIAL WATER SERVICE PER COA STD DETAIL W-050. INSTALL ENTIRE SERVICE EXCEPT METER. SET METER BOX AT EXISTING GRADE THEN BURY UNDER 2' DEPTH PILE OF SOIL FOR PROTECTION. METER TO BE INSTALLED AT LATER DATE BY THE CITY.
 - ③ SANITARY SIDE SEWER PER COA STD DETAIL SS090 AND DETAIL. MAINTAIN 7' MINIMUM COVER AT PROPERTY LINE.
 - ④ ADJUST WATER METER BOX TO GRADE.
 - ⑤ NOT USED.
 - ⑥ 2" BLOW OFF ASSEMBLY PER COA STD PLAN W-180.
 - ⑦ APPROXIMATE UTILITY LOCATION CONTRACTOR TO LOCATE UTILITIES PRIOR TO BEGINNING EXCAVATION. NOTIFY ENGINEER OF CONFLICTS.
 - ⑧ TAPPING TEE PER COA STD PLAN W-206. Addendum 1
 - ⑨ SANITARY SEWER MANHOLE PER COA STD DETAIL SS-010.
 - ⑩ FILL LOW AREA WITH GRAVEL BORROW TO PROVIDE MIN 3.0' COVER OVER WATERLINE 10.0' MIN ON EACH SIDE OF WATER MAIN. CONSTRUCT IN ACCORDANCE WITH SECTION 2-03.3(14) OF THE STANDARD SPECIFICATIONS. Addendum 1
 - ⑪ SAWCUT EXISTING PAVEMENT, SIDEWALK OR CURB AND GUTTER.
 - ⑫ PAVEMENT RESTORATION PER DETAIL MD3.
 - ⑬ NOT USED.

GENERAL NOTE:
 SEE WATER AND SEWER GENERAL NOTES ON SHEET WS8.

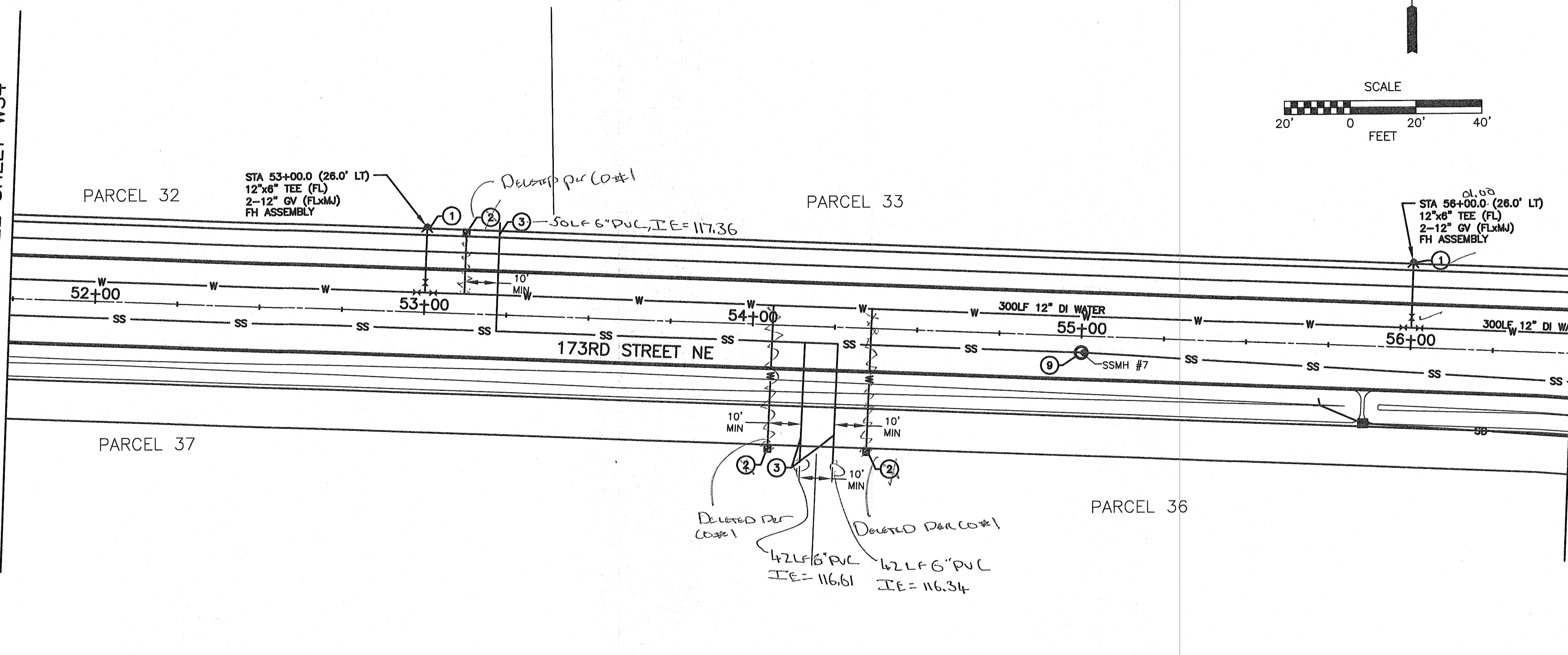
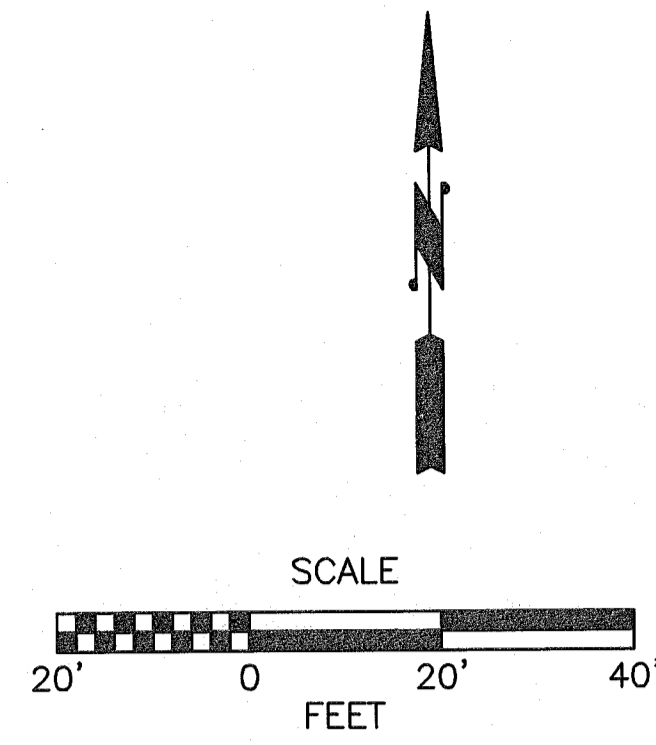


CALL 2 BUSINESS DAYS BEFORE YOU DIG
 1 800 424-5555
 UTILITIES UNDERGROUND LOCATION CENTER

<table border="1" style="width: 100%; border-collapse: collapse;"> <tr> <th>No.</th> <th>Date</th> <th>Revision</th> </tr> <tr> <td>1</td> <td>10/9/13</td> <td>Addendum 1</td> </tr> </table>	No.	Date	Revision	1	10/9/13	Addendum 1	<p>Perteeet 425-252-7700 11-800-615-9900 2707 Colby Avenue, Suite 900 Everett, Washington 98201</p>	<p>APPROVED FOR CONSTRUCTION</p> <p>JAMES KELLY, PE PUBLIC WORKS DIRECTOR</p> <p>DATE APPROVED</p>	<p>BID SUBMITTAL</p>		<table border="1" style="width: 100%; border-collapse: collapse;"> <tr> <td>Drawn By</td> <td>Date</td> <td>SCALE</td> </tr> <tr> <td>MMC</td> <td>10/8/13</td> <td>Horiz 1"=20'</td> </tr> <tr> <td>Designed By</td> <td></td> <td>Vert 1"=5'</td> </tr> <tr> <td>Checked By</td> <td>10/8/13</td> <td>Project Number</td> </tr> <tr> <td>DCS</td> <td></td> <td>20110044</td> </tr> <tr> <td>Approved By</td> <td></td> <td></td> </tr> </table>	Drawn By	Date	SCALE	MMC	10/8/13	Horiz 1"=20'	Designed By		Vert 1"=5'	Checked By	10/8/13	Project Number	DCS		20110044	Approved By			<p>CITY OF ARLINGTON</p> <p>173RD STREET NE EXTENSION</p> <p>WATER & SEWER PLAN</p>	<p>Drawing No.</p> <p style="font-size: 24px; font-weight: bold;">WS4</p> <p>Sheet No.</p> <p style="font-size: 10px;">of Total</p>
No.	Date	Revision																													
1	10/9/13	Addendum 1																													
Drawn By	Date	SCALE																													
MMC	10/8/13	Horiz 1"=20'																													
Designed By		Vert 1"=5'																													
Checked By	10/8/13	Project Number																													
DCS		20110044																													
Approved By																															

MATCHLINE STA 51+75 SEE SHEET WS4

MATCHLINE STA 56+50 SEE SHEET WS6

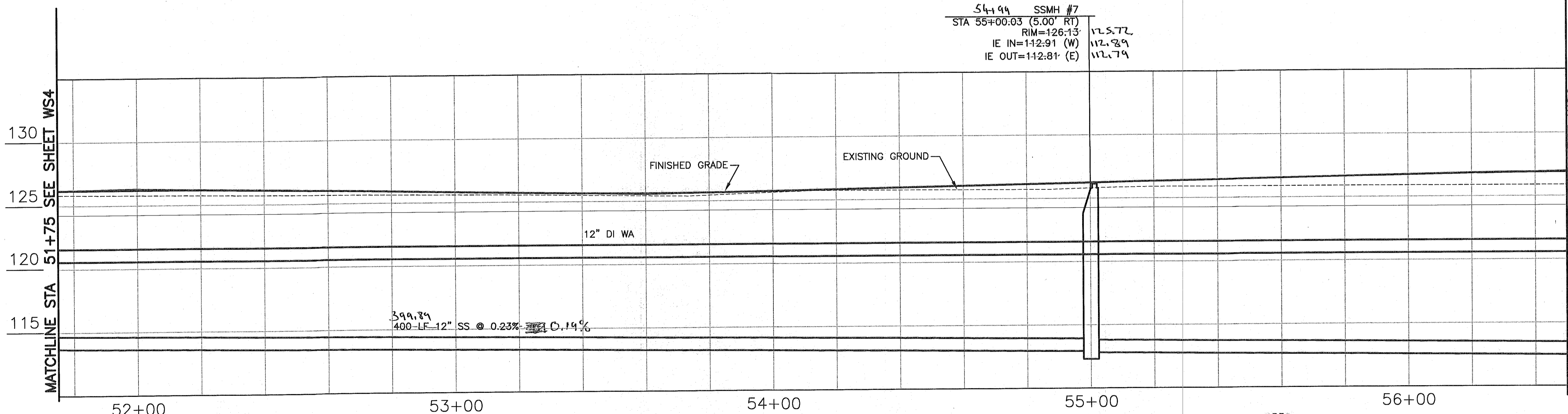


WATER AND SEWER NOTES:

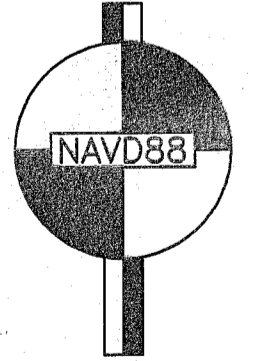
- ① FIRE HYDRANT ASSEMBLY PER COA STD PLAN W-010. SET HYDRANT 3' FROM BACK OF SIDEWALK WHERE PRESENT.
- ② 2" COMMERCIAL WATER SERVICE PER COA STD DETAIL W-050. INSTALL ENTIRE SERVICE EXCEPT METER. SET METER BOX AT EXISTING GRADE THEN BURY UNDER 2' DEPTH PILE OF SOIL FOR PROTECTION. METER TO BE INSTALLED AT LATER DATE BY THE CITY.
- ③ SANITARY SIDE SEWER PER COA STD DETAIL SS090 AND DETAIL MAINTAIN 7' MINIMUM COVER AT PROPERTY LINE.
- ④ ADJUST WATER METER BOX TO GRADE.
- ⑤ NOT USED.
- ⑥ 2" BLOW OFF ASSEMBLY PER COA STD PLAN W-180.
- ⑦ APPROXIMATE UTILITY LOCATION CONTRACTOR TO LOCATE UTILITIES PRIOR TO BEGINNING EXCAVATION. NOTIFY ENGINEER OF CONFLICTS.
- ⑧ TAPPING TEE PER COA STD PLAN W-200. Addendum 1
- ⑨ SANITARY SEWER MANHOLE PER COA STD DETAIL SS-010.
- ⑩ FILL LOW AREA WITH GRAVEL BORROW TO PROVIDE MIN 3.0' COVER OVER WATERLINE 10.0' MIN ON EACH SIDE OF WATER MAIN. CONSTRUCT IN ACCORDANCE WITH SECTION 2-03.3(14) OF THE STANDARD SPECIFICATIONS.
- ⑪ SAWCUT EXISTING PAVEMENT, SIDEWALK OR CURB AND GUTTER.
- ⑫ PAVEMENT RESTORATION PER DETAIL MD3.
- ⑬ NOT USED.

GENERAL NOTE:

SEE WATER AND SEWER GENERAL NOTES ON SHEET WS8.



54+99	SSMH #7
STA 55+00.03 (5.00' RT)	112.572
RIM=126.13	112.829
IE IN=112.91 (W)	112.779
IE OUT=112.81 (E)	



CALL 2 BUSINESS DAYS BEFORE YOU DIG
 1 800 424-5555
 UTILITIES UNDERGROUND LOCATION CENTER

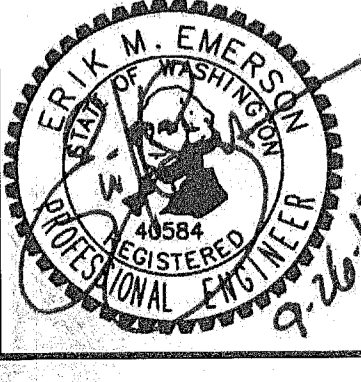
C:\Arington_City_of\Projects\20110044 - 173rd PI Extension\CADD\Plan_Sheets\20110044-WS.dwg Layout Name: WS (6)

No.	Date	Revision	By	Appr.
1	10/9/13	Addendum 1		

Perteet
 425-252-7700 | 1-800-615-9900
 2707 Colby Avenue, Suite 900
 Everett, Washington 98201

CITY OF ARLINGTON
 APPROVED FOR CONSTRUCTION
 JAMES KELLY, PE
 PUBLIC WORKS DIRECTOR
 DATE APPROVED

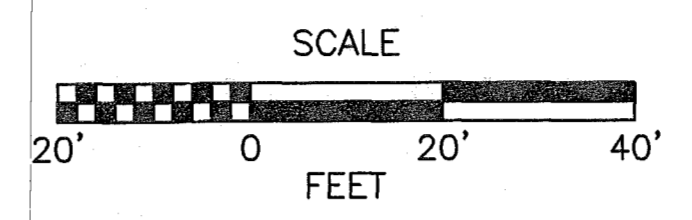
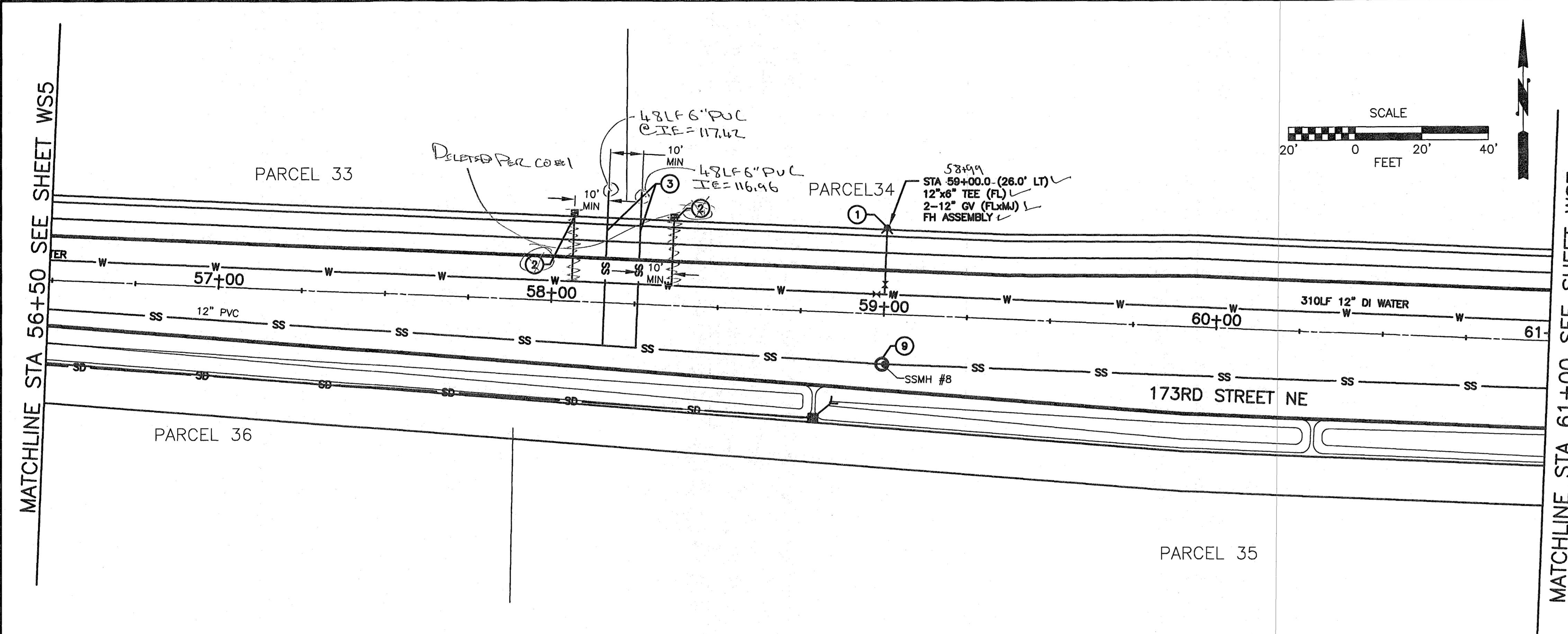
BID SUBMITTAL



Drawn By	Date	SCALE
MMC	10/8/13	Horiz 1"=20'
Designed By	10/8/13	Vert 1"=5'
Checked By	10/9/13	Project Number
DCS		20110044
Approved By		

CITY OF ARLINGTON
 173RD STREET NE EXTENSION
WATER & SEWER PLAN

Drawing No.	WS5
Sheet No.	
of Total	

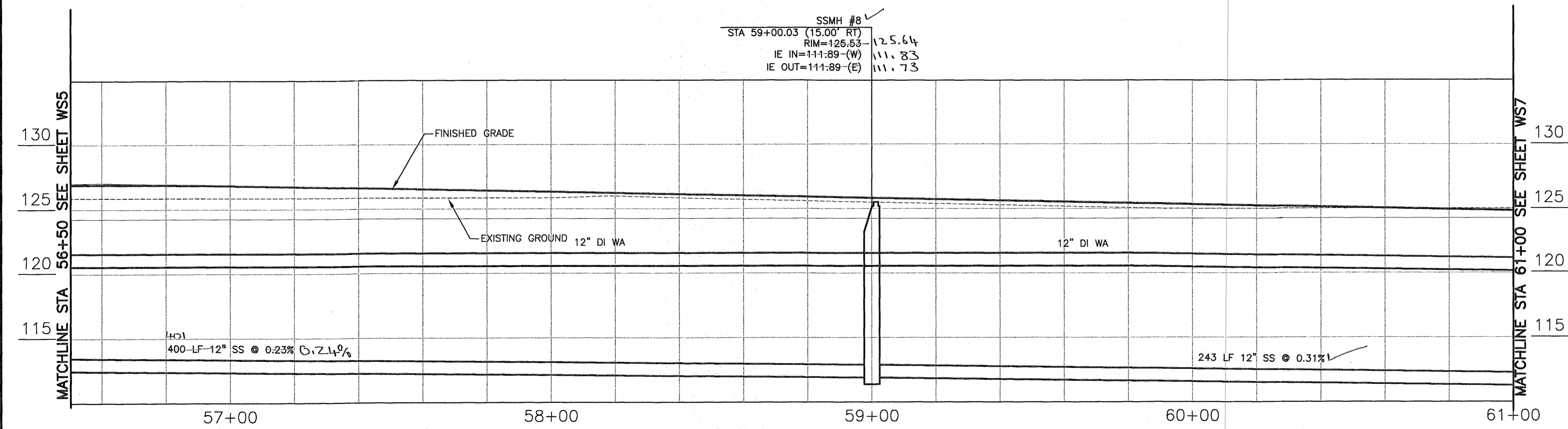


WATER AND SEWER NOTES:

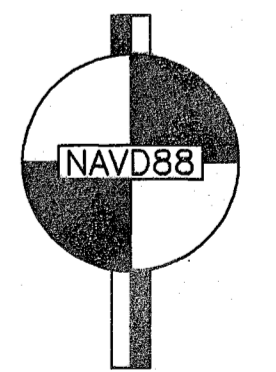
- ① FIRE HYDRANT ASSEMBLY PER COA STD PLAN W-010. SET HYDRANT 3' FROM BACK OF SIDEWALK WHERE PRESENT.
- ② 2" COMMERCIAL WATER SERVICE PER COA STD DETAIL W-050. INSTALL ENTIRE SERVICE EXCEPT METER. SET METER BOX AT EXISTING GRADE THEN BURY UNDER 2' DEPTH PILE OF SOIL FOR PROTECTION. METER TO BE INSTALLED AT LATER DATE BY THE CITY.
- ③ SANITARY SIDE SEWER PER COA STD DETAIL SS090 AND DETAIL. MAINTAIN 7' MINIMUM COVER AT PROPERTY LINE.
- ④ ADJUST WATER METER BOX TO GRADE.
- ⑤ NOT USED.
- ⑥ 2" BLOW OFF ASSEMBLY PER COA STD PLAN W-180.
- ⑦ APPROXIMATE UTILITY LOCATION CONTRACTOR TO LOCATE UTILITIES PRIOR TO BEGINNING EXCAVATION. NOTIFY ENGINEER OF CONFLICTS.
- ⑧ TAPPING TEE PER COA STD PLAN W-200. Addendum 1
- ⑨ SANITARY SEWER MANHOLE PER COA STD DETAIL SS-010.
- ⑩ FILL LOW AREA WITH GRAVEL BORROW TO PROVIDE MIN 3.0' COVER OVER WATERLINE 10.0' MIN ON EACH SIDE OF WATER MAIN. CONSTRUCT IN ACCORDANCE WITH SECTION 2-03.3(14) OF THE STANDARD SPECIFICATIONS.
- ⑪ SAWCUT EXISTING PAVEMENT, SIDEWALK OR CURB AND GUTTER.
- ⑫ PAVEMENT RESTORATION PER DETAIL MD3.
- ⑬ NOT USED.

GENERAL NOTE:

SEE WATER AND SEWER GENERAL NOTES ON SHEET WS8.



SSMH #8
 STA 59+00.03 (15.00' RT)
 RIM=125.53 125.64
 IE IN=111.89-(W) 111.83
 IE OUT=111.89-(E) 111.73



CALL 2 BUSINESS DAYS BEFORE YOU DIG
 1 800 424-5555
 UTILITIES UNDERGROUND LOCATION CENTER

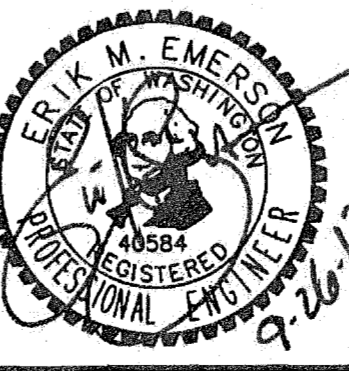
Oct 03, 2013 - 4:32pm Iesultech X:\Arifington_City of Projects\20110044 - 173rd St Extension\CADD\Plan Sheets\20110044-WS6.dwg Layout Name: WS (6)

No.	Date	Revision	By	Appr.
1	10/9/13	Addendum 1		

Perteeet
 425-252-7700 | 1-800-615-9900
 2707 Colby Avenue, Suite 900
 Everett, Washington 98201

CITY OF ARLINGTON
 APPROVED FOR CONSTRUCTION
 JAMES KELLY, PE
 PUBLIC WORKS DIRECTOR
 DATE APPROVED

BID SUBMITTAL

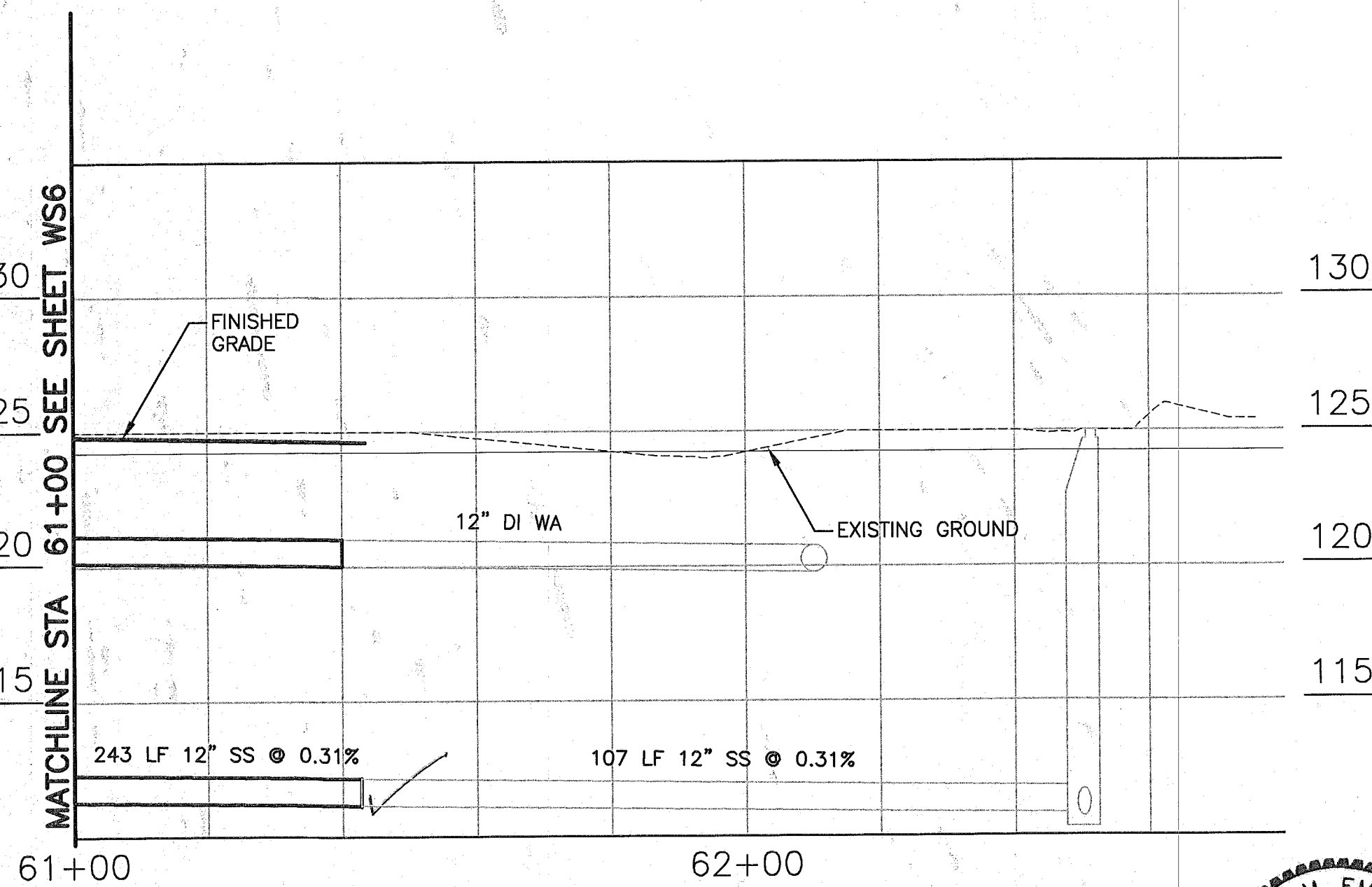
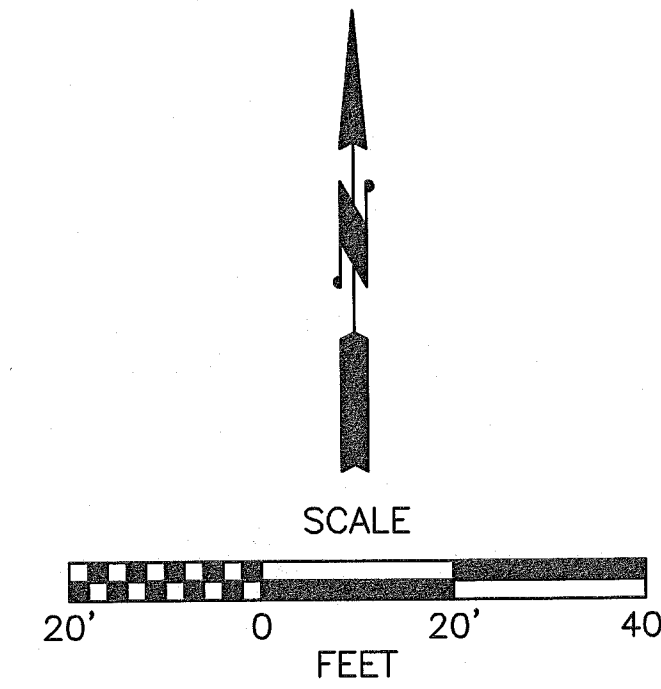
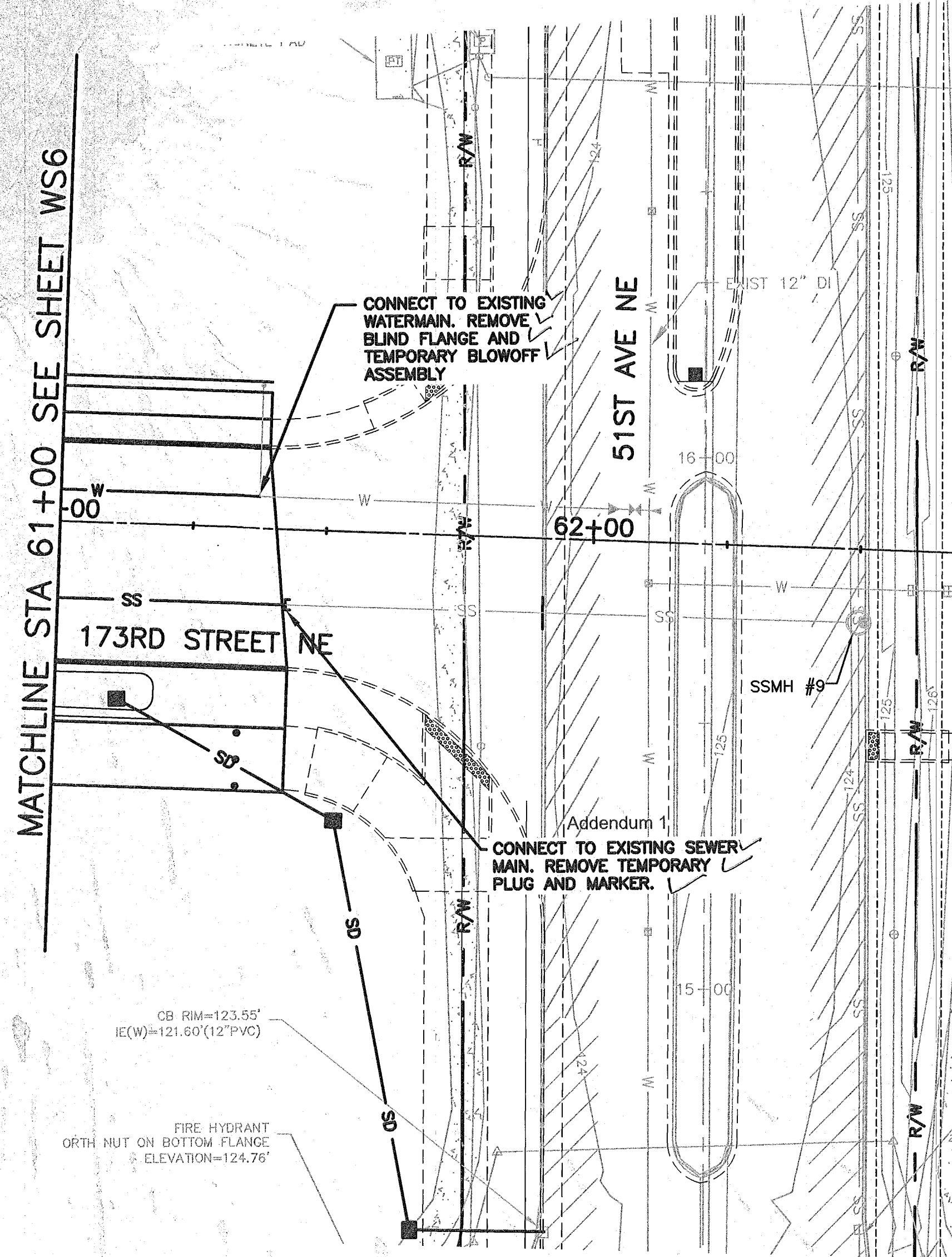


Drawn By	Date	SCALE
MMC	10/8/13	Horiz 1"=20'
Designed By		Vert 1"=5'
Checked By	10/8/13	Project Number
DCS		20110044
Approved By		

CITY OF ARLINGTON
 173RD STREET NE EXTENSION
WATER & SEWER PLAN

Drawing No.	WS6
Sheet No.	
of Total	

C:\03_2013_4632pm\test\utilch X:\Arlington, City of\Projects\20110044 - 173rd Pl Extension\CADD\Plan Sheets\20110044-WS.dwg Layout Name: WS (7)

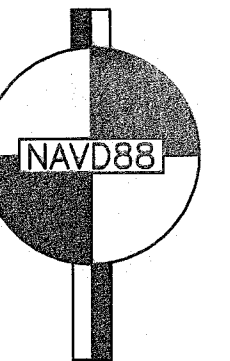


WATER AND SEWER NOTES:

- ① FIRE HYDRANT ASSEMBLY PER COA STD PLAN W-010. SET HYDRANT 3' FROM BACK OF SIDEWALK WHERE PRESENT.
- ② 2" COMMERCIAL WATER SERVICE PER COA STD DETAIL W-050. INSTALL ENTIRE SERVICE EXCEPT METER. SET METER BOX AT EXISTING GRADE THEN BURY UNDER 2' DEPTH PILE OF SOIL FOR PROTECTION. METER TO BE INSTALLED AT LATER DATE BY THE CITY.
- ③ SANITARY SIDE SEWER PER COA STD DETAIL SS090 AND DETAIL. MAINTAIN 7' MINIMUM COVER AT PROPERTY LINE.
- ④ ADJUST WATER METER BOX TO GRADE.
- ⑤ NOT USED.
- ⑥ 2" BLOW OFF ASSEMBLY PER COA STD PLAN W-180.
- ⑦ APPROXIMATE UTILITY LOCATION CONTRACTOR TO LOCATE UTILITIES PRIOR TO BEGINNING EXCAVATION. NOTIFY ENGINEER OF CONFLICTS.
- ⑧ TAPPING TEE PER COA STD PLAN W-200. Addendum 1
- ⑨ SANITARY SEWER MANHOLE PER COA STD DETAIL SS-010.
- ⑩ FILL LOW AREA WITH GRAVEL BORROW TO PROVIDE MIN 3.0' COVER OVER WATERLINE 10.0' MIN ON EACH SIDE OF WATER MAIN. CONSTRUCT IN ACCORDANCE WITH SECTION 2-03.3(14) OF THE STANDARD SPECIFICATIONS.
- ⑪ SAWCUT EXISTING PAVEMENT, SIDEWALK OR CURB AND GUTTER.
- ⑫ PAVEMENT RESTORATION PER DETAIL MD3.
- ⑬ NOT USED.

GENERAL NOTE:

SEE WATER AND SEWER GENERAL NOTES ON SHEET WS8.



CALL 2 BUSINESS DAYS BEFORE YOU DIG
 1 800 424-5555
 UTILITIES UNDERGROUND LOCATION CENTER

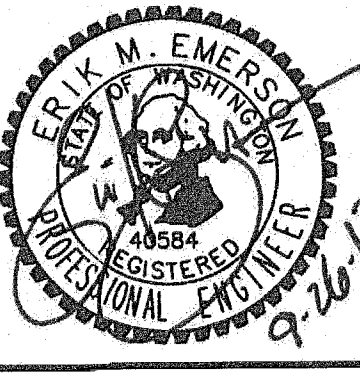
No.	Date	Revision	By	Appr.
1	10/9/13	Addendum 1		

Pertee
 425-252-7700 | 1-800-615-9900
 2707 Colby Avenue, Suite 900
 Everett, Washington 98201

APPROVED FOR CONSTRUCTION

 JAMES KELLY, PE
 PUBLIC WORKS DIRECTOR
 DATE APPROVED

BID SUBMITTAL



Drawn By	Date	SCALE
MMC	10/8/13	Horiz 1"=20'
Designed By		Vert 1"=5'
EE	10/8/13	Project Number
Checked By		20110044
DCS	10/8/13	
Approved By		

CITY OF ARLINGTON
 173RD STREET NE EXTENSION
WATER & SEWER PLAN

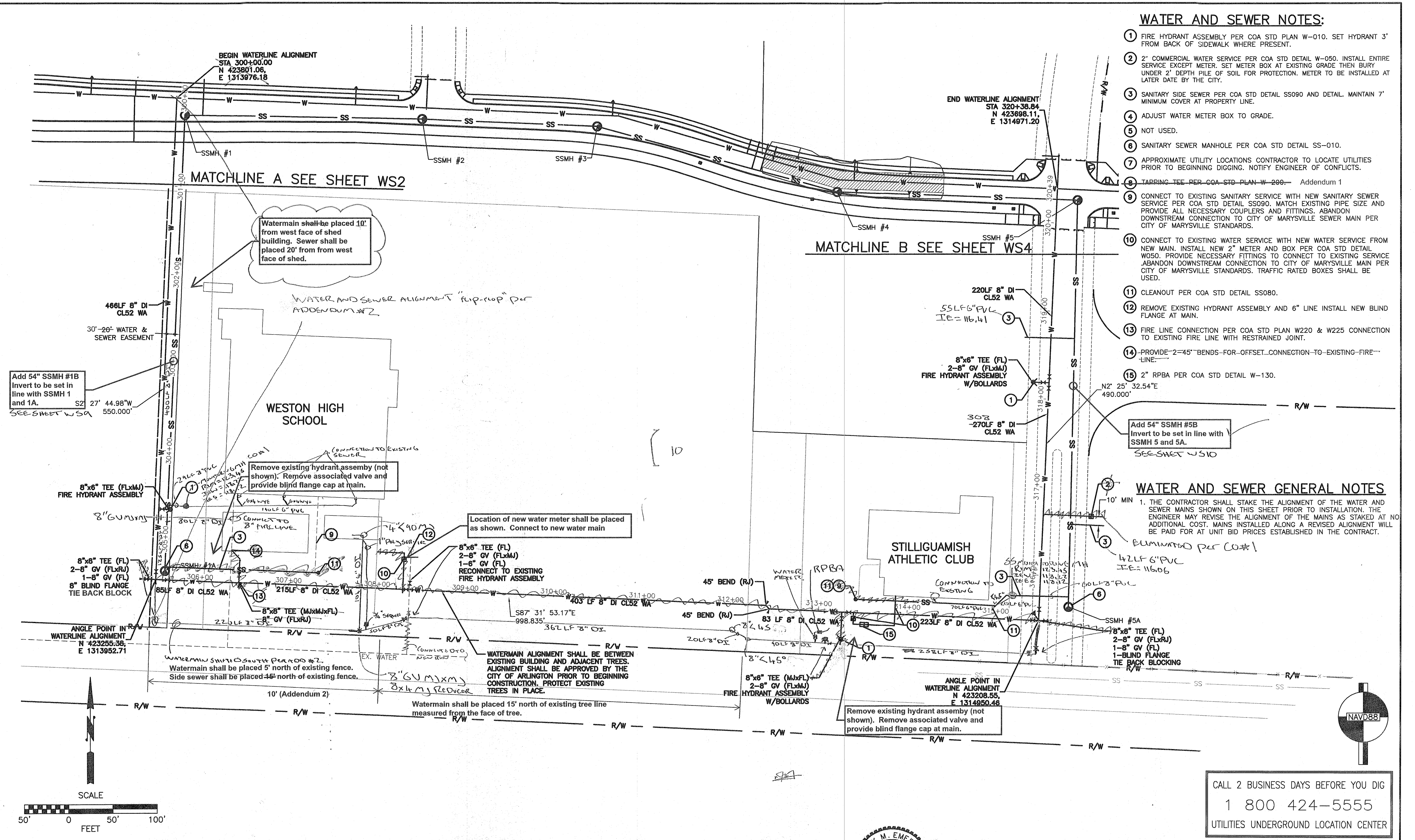
Drawing No. WS7
Sheet No. of Total

WATER AND SEWER NOTES:

- 1 FIRE HYDRANT ASSEMBLY PER COA STD PLAN W-010. SET HYDRANT 3' FROM BACK OF SIDEWALK WHERE PRESENT.
- 2 2" COMMERCIAL WATER SERVICE PER COA STD DETAIL W-050. INSTALL ENTIRE SERVICE EXCEPT METER. SET METER BOX AT EXISTING GRADE THEN BURY UNDER 2' DEPTH PILE OF SOIL FOR PROTECTION. METER TO BE INSTALLED AT LATER DATE BY THE CITY.
- 3 SANITARY SIDE SEWER PER COA STD DETAIL SS090 AND DETAIL. MAINTAIN 7' MINIMUM COVER AT PROPERTY LINE.
- 4 ADJUST WATER METER BOX TO GRADE.
- 5 NOT USED.
- 6 SANITARY SEWER MANHOLE PER COA STD DETAIL SS-010.
- 7 APPROXIMATE UTILITY LOCATIONS CONTRACTOR TO LOCATE UTILITIES PRIOR TO BEGINNING DIGGING. NOTIFY ENGINEER OF CONFLICTS.
- 8 TAPPING TEE PER COA STD PLAN W-200. Addendum 1
- 9 CONNECT TO EXISTING SANITARY SERVICE WITH NEW SANITARY SEWER SERVICE PER COA STD DETAIL SS090. MATCH EXISTING PIPE SIZE AND PROVIDE ALL NECESSARY COUPLERS AND FITTINGS. ABANDON DOWNSTREAM CONNECTION TO CITY OF MARYSVILLE SEWER MAIN PER CITY OF MARYSVILLE STANDARDS.
- 10 CONNECT TO EXISTING WATER SERVICE WITH NEW WATER SERVICE FROM NEW MAIN. INSTALL NEW 2" METER AND BOX PER COA STD DETAIL W050. PROVIDE NECESSARY FITTINGS TO CONNECT TO EXISTING SERVICE. ABANDON DOWNSTREAM CONNECTION TO CITY OF MARYSVILLE MAIN PER CITY OF MARYSVILLE STANDARDS. TRAFFIC RATED BOXES SHALL BE USED.
- 11 CLEANOUT PER COA STD DETAIL SS080.
- 12 REMOVE EXISTING HYDRANT ASSEMBLY AND 6" LINE INSTALL NEW BLIND FLANGE AT MAIN.
- 13 FIRE LINE CONNECTION PER COA STD PLAN W220 & W225 CONNECTION TO EXISTING FIRE LINE WITH RESTRAINED JOINT.
- 14 PROVIDE 2-45° BENDS FOR OFFSET CONNECTION TO EXISTING FIRE LINE.
- 15 2" RPBA PER COA STD DETAIL W-130.

WATER AND SEWER GENERAL NOTES

1. THE CONTRACTOR SHALL STAKE THE ALIGNMENT OF THE WATER AND SEWER MAINS SHOWN ON THIS SHEET PRIOR TO INSTALLATION. THE ENGINEER MAY REVISE THE ALIGNMENT OF THE MAINS AS STAKED AT NO ADDITIONAL COST. MAINS INSTALLED ALONG A REVISED ALIGNMENT WILL BE PAID FOR AT UNIT BID PRICES ESTABLISHED IN THE CONTRACT.



CALL 2 BUSINESS DAYS BEFORE YOU DIG
1 800 424-5555
UTILITIES UNDERGROUND LOCATION CENTER

Oct 03, 2013 - 4:32pm - tsekulifich - X:\Ar\Projects\City of\Projects\20110044 - 173rd PI Extension\CADD\Plan Sheets\20110044-WS.dwg - Layout Name: WS (6)

No.	Date	Revision	By	Appr.
2	10/16/13	Addendum 2		
1	10/9/13	Addendum 1		

Perteeet
425-252-7700 | 1-800-615-9900
2707 Colby Avenue, Suite 900
Everett, Washington 98201

CITY OF ARLINGTON
APPROVED FOR CONSTRUCTION
JAMES KELLY, PE
PUBLIC WORKS DIRECTOR
DATE APPROVED

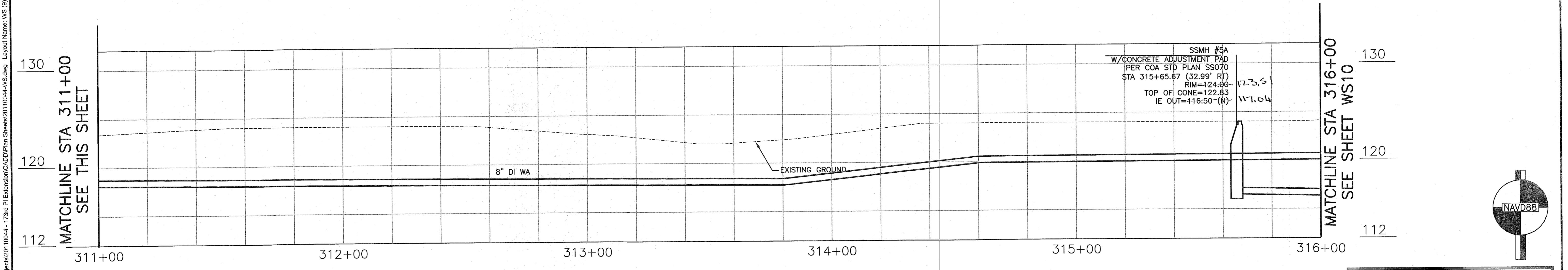
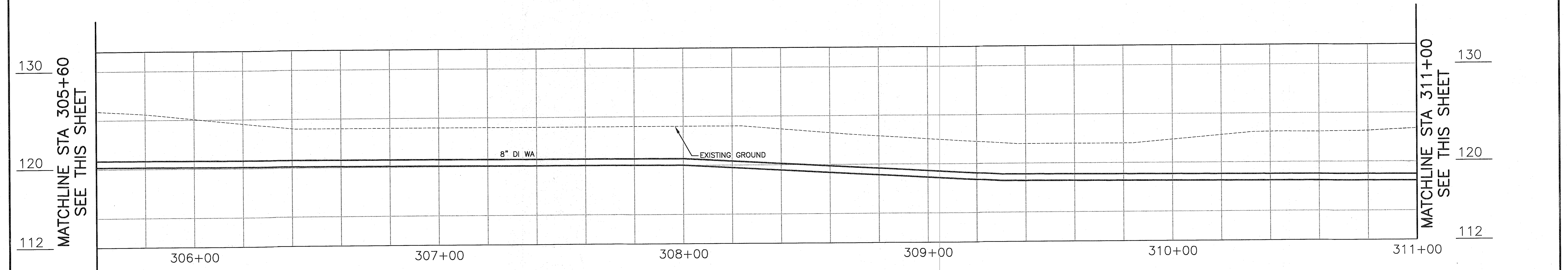
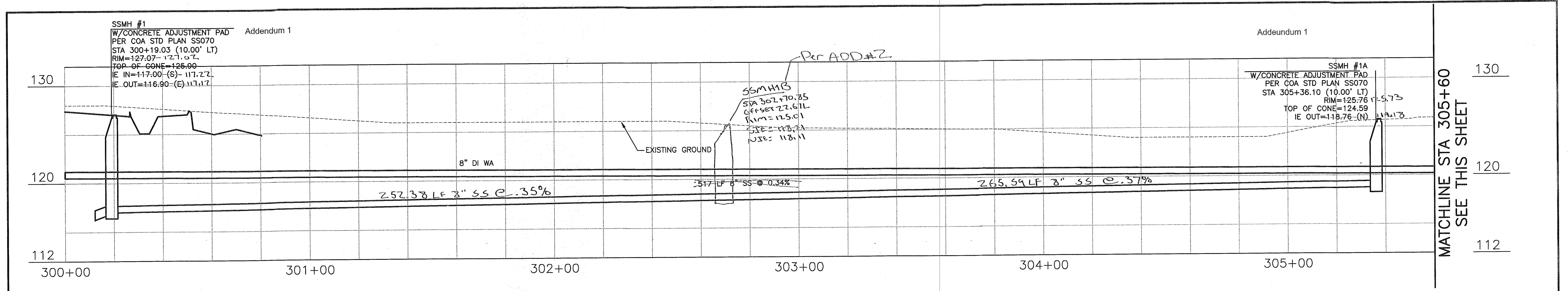
BID SUBMITTAL

FRANK M. EMERSON
PROFESSIONAL ENGINEER
No. 3584
EXPIRES 12/31/14

Drawn By	Date	SCALE
MMC	10/8/13	Horiz 1"=50'
Designed By		Vert 1"=5'
Checked By	10/8/13	Project Number
DCS		20110044
Approved By		

CITY OF ARLINGTON
173RD STREET NE EXTENSION
WATER & SEWER PLANS

Drawing No. **WS8**
Sheet No. **1** of **1**

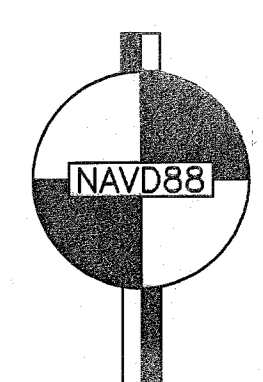


SSMH #1
 W/CONCRETE ADJUSTMENT PAD Addendum 1
 PER COA STD PLAN SS070
 STA 300+19.03 (10.00' LT)
 RIM=127.07-127.07
 TOP OF CONE=125.00
 IE IN=117.00-(S)-117.22
 IE OUT=116.90-(E)-117.17

Addendum 1
 SSMH #1A
 W/CONCRETE ADJUSTMENT PAD
 PER COA STD PLAN SS070
 STA 305+36.10 (10.00' LT)
 RIM=125.76-125.76
 TOP OF CONE=124.59
 IE OUT=118.76-(N)-118.18

Per ADD#2
 SSMH #3
 STA 302+70.85
 OFFSET 22.61L
 RIM=125.01
 IE=118.21
 OIE=118.11

SSMH #5A
 W/CONCRETE ADJUSTMENT PAD
 PER COA STD PLAN SS070
 STA 315+65.67 (32.99' RT)
 RIM=124.00-123.51
 TOP OF CONE=122.83
 IE OUT=116.50-(N)-117.04



CALL 2 BUSINESS DAYS BEFORE YOU DIG
 1 800 424-5555
 UTILITIES UNDERGROUND LOCATION CENTER

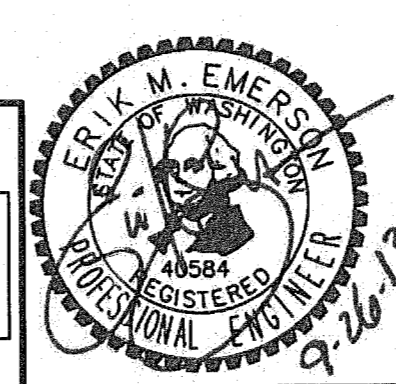
Oct 03, 2013 - 4:33pm tsekulich X:\Arlington_City ofProjects\20110044 - 173rd PI Extension\CADD\Plan Sheets\20110044-WS.dwg Layout Name: WS (9)

No.	Date	Revision	By	Appr.
1	10/9/13	Addendum 1		

Pertee
 425-252-7700 | 1-800-615-9900
 2707 Colby Avenue, Suite 900
 Everett, Washington 98201

CITY OF ARLINGTON
 APPROVED FOR CONSTRUCTION
 JAMES KELLY, PE
 PUBLIC WORKS DIRECTOR
 DATE APPROVED

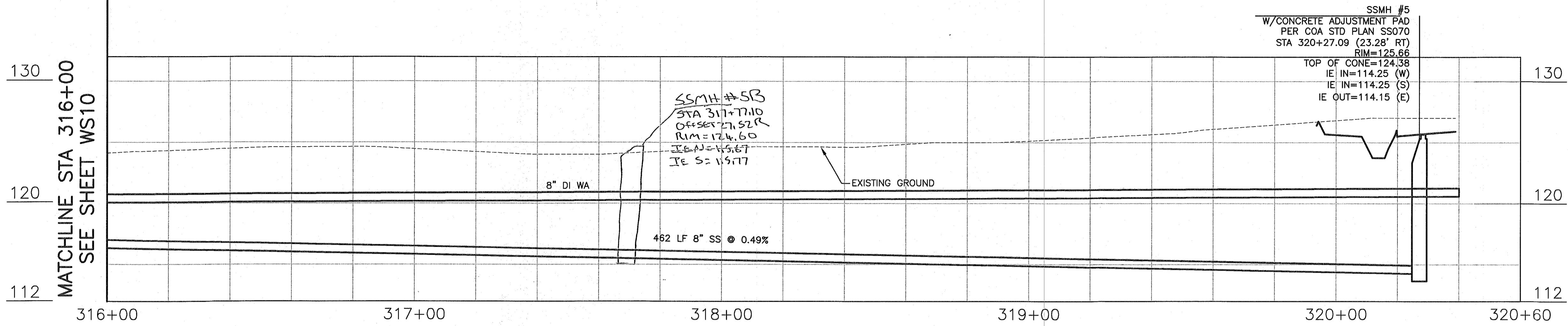
BID SUBMITTAL



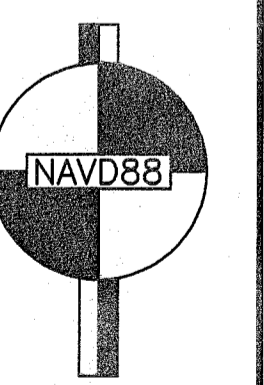
Drawn By	Date	SCALE
MMC	10/8/13	Horiz 1"=50'
Designed By		Vert 1"=5'
EE	10/8/13	Project Number
Checked By		20110044
DCS	10/8/13	
Approved By		

CITY OF ARLINGTON
 173RD STREET NE EXTENSION
WATER PROFILE

Drawing No.
WS9
 Sheet No.
 of Total



Oct 03, 2013 - 4:33pm tsekulich X:\Arlington_City of Projects\20110044 - 173rd PI Extension\CADD\Plan Sheets\20110044-WS.dwg Layout Name: WS (10)



CALL 2 BUSINESS DAYS BEFORE YOU DIG
 1 800 424-5555
 UTILITIES UNDERGROUND LOCATION CENTER

No.	Date	Revision	By	Appr.

Pertee
 425-252-7700 | 1-800-615-9900
 2707 Colby Avenue, Suite 900
 Everett, Washington 98201

APPROVED FOR CONSTRUCTION

 JAMES KELLY, PE
 PUBLIC WORKS DIRECTOR
 DATE APPROVED

BID SUBMITTAL



Drawn By	Date
MMC	10/8/13
Designed By	EE
Checked By	DCS
Approved By	10/8/13

SCALE
 Horiz 1"=50'
 Vert 1"=5'
 Project Number 20110044

CITY OF ARLINGTON
 173RD STREET NE EXTENSION
WATER PROFILE

Drawing No. **WS10**
 Sheet No. _____ of Total