

"EXHIBIT A "

MITIGATION EASEMENT DESCRIPTION

COMMENCING AT THE WEST QUARTER CORNER OF SECTION 8; TOWNSHIP 31 NORTH; RANGE 5 EAST OF W.M.; AS SHOWN ON THAT RECORD OF SURVEY RECORDED UNDER SNOHOMISH COUNTY AUDITOR'S FILE NO. 7708170149; THENCE ALONG THE EAST-WEST CENTERLINE OF SAID SECTION NORTH 86°23'00" EAST FOR A DISTANCE OF 1331.82 FEET; THENCE DEPARTING SAID SECTION LINE SOUTH 00°19'19" EAST FOR A DISTANCE OF 72.69 FEET TO THE SOUTHERLY MARGIN OF STATE ROUTE 530; THENCE ALONG SAID RIGHT-OF-WAY MARGIN NORTH 86°23'00" EAST FOR A DISTANCE OF 460.22 FEET, MORE OR LESS; TO THE NORTHEASTERLY MOST CORNER AS SHOWN ON THOSE RECORD OF SURVEYS RECORDED UNDER SNOHOMISH COUNTY AUDITOR'S FILE NO. 7907170384 AND 199909215001; THENCE SOUTH 00°18'54" EAST FOR A DISTANCE OF 435.00 FEET; THENCE SOUTH 86°23'00" WEST 82.06 FEET TO THE POINT OF BEGINING;

THENCE CONTINUING SOUTH 86°23'00" WEST 378.12 FEET; THENCE SOUTH 00°19'19" EAST FOR A DISTANCE OF 387.57 FEET; THENCE SOUTH 00°19'19" EAST FOR A DISTANCE OF 348.30 FEET; THENCE SOUTH 31°10'00" EAST FOR A DISTANCE OF 169.02 FEET; THENCE NORTH 57°46'59" EAST FOR A DISTANCE OF 73.01 FEET; THENCE NORTH 78°29'51" EAST FOR A DISTANCE OF 90.28 FEET; THENCE SOUTH 85°13'22" EAST FOR A DISTANCE OF 11.68 FEET; THENCE NORTH 61°38'06" EAST FOR A DISTANCE OF 10.80 FEET; THENCE NORTH 62°49'50" EAST FOR A DISTANCE OF 68.58 FEET; THENCE NORTH 74°57'45" EAST FOR A DISTANCE OF 73.55 FEET; THENCE NORTH 73°23'53" EAST FOR A DISTANCE OF 3.19 FEET; THENCE NORTH 49°49'35" EAST FOR A DISTANCE OF 46.59 FEET; THENCE NORTH 89°47'57" EAST FOR A DISTANCE OF 21.77 FEET; THENCE NORTH 45°47'03" EAST FOR A DISTANCE OF 23.71 FEET; THENCE SOUTH 87°49'15" EAST FOR A DISTANCE OF 39.50 FEET; THENCE NORTH 58°45'52" EAST FOR A DISTANCE OF 23.89 FEET; THENCE NORTH 54°17'17" EAST FOR A DISTANCE OF 35.51 FEET; THENCE NORTH 64°47'01" EAST FOR A DISTANCE OF 54.65 FEET; THENCE NORTH 73°58'39" EAST FOR A DISTANCE OF 24.34 FEET; THENCE NORTH 02°12'32" WEST FOR A DISTANCE OF 360.83 FEET; THENCE NORTH 87°47'28" EAST FOR A DISTANCE OF 20.00 FEET; THENCE NORTH 02°12'32" WEST FOR A DISTANCE OF 59.23 FEET; THENCE SOUTH 90°00'00" WEST FOR A DISTANCE OF 20.01 FEET; THENCE NORTH 02°12'32" WEST FOR A DISTANCE OF 76.82 FEET; THENCE NORTH 90°00'00" WEST FOR A DISTANCE OF 237.46 FEET; THENCE NORTH 00°00'00" EAST FOR A DISTANCE OF 186.37 FEET TO THE POINT OF BEGINNING.

SITUATE IN THE COUNTY OF SNOHOMISH, STATE OF WASHINGTON.

CONTAINING 449,995 SQ. FT. MORE OR LESS



Job# 2016044
March 6, 2018

PowerTek Surveying

5426 Barrett Road, #104 ❖ Ferndale, WA 98248
(360) 746-8801 Phone

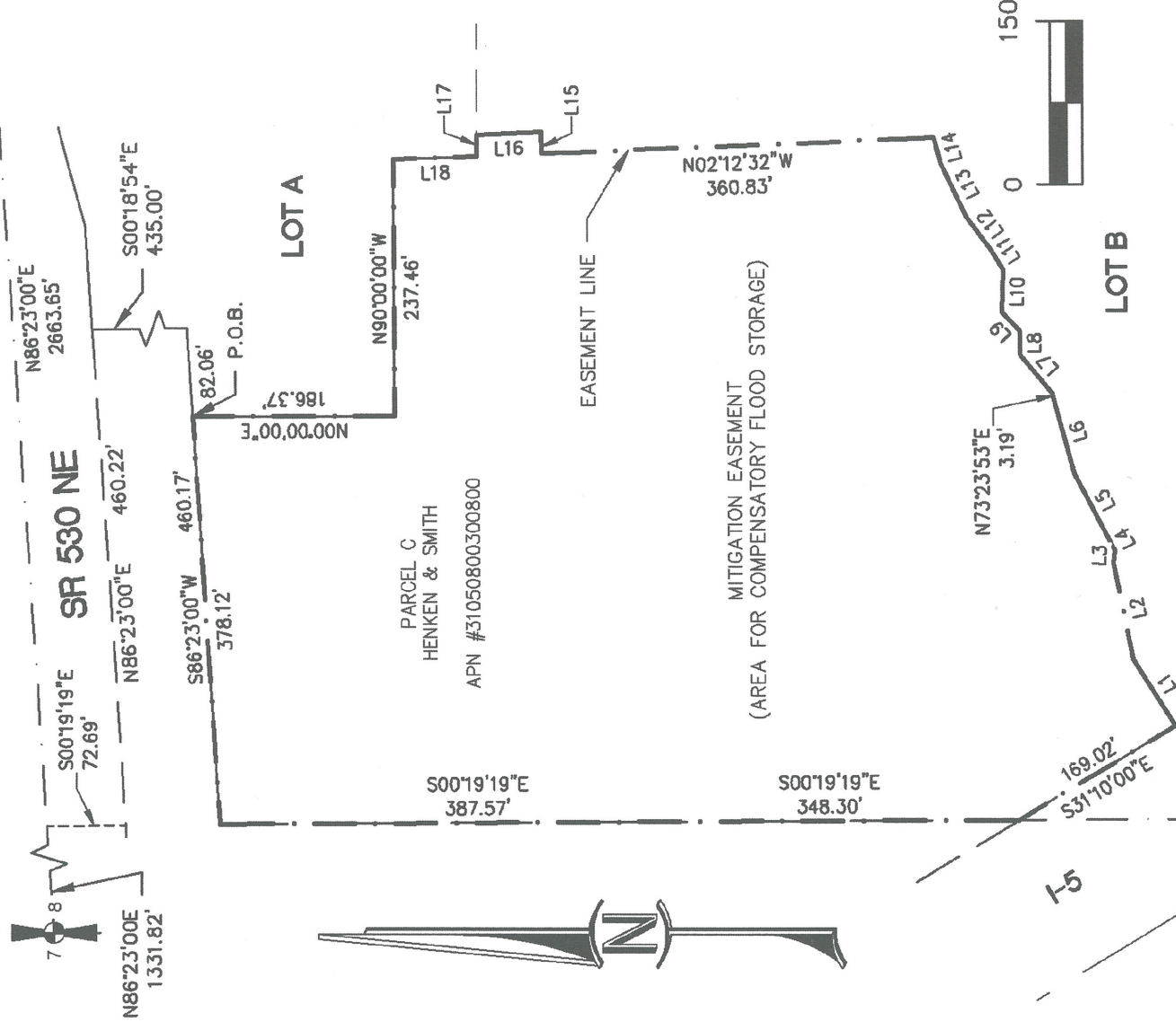
POWERTEK SURVEYING

(360) 746.8801

#5426 BARRETT ROAD #104
 FERNDALE, WA 98248
 WWW.POWERTEK.NET

EXHIBIT 'B'

SITUATE IN A PORTION OF E 1/2, SW 1/4
 SECTION 8, TOWNSHIP 31 NORTH, RANGE 5 EAST OF W.M.
 CITY OF ARLINGTON, SNOHOMISH COUNTY, WASHINGTON



LINE #	BEARING	LENGTH
L1	N57°46'59"E	73.01'
L2	N78°29'51"E	90.28'
L3	S85°13'22"E	11.68'
L4	N61°38'06"E	10.80'
L5	N62°49'50"E	68.58'
L6	N74°57'45"E	73.55'

LINE #	BEARING	LENGTH
L7	N49°49'35"E	46.59'
L8	N89°47'57"E	21.77'
L9	N45°47'03"E	23.71'
L10	S87°49'15"E	39.50'
L11	N58°45'52"E	23.89'
L12	N54°17'17"E	35.51'

LINE #	BEARING	LENGTH
L13	N64°47'01"E	54.65'
L14	N73°58'39"E	24.34'
L15	N87°47'28"E	20.00'
L16	N02°12'32"W	59.23'
L17	S90°00'00"W	20.01'
L18	N02°12'32"W	76.82'



MITIGATION EASEMENT

DRAWN BY: JVD	DATE: 3/6/2018	JOB NO.: 2016044
REVIEWED BY: JJD	SCALE: 1" = 150'	SHEET: 1 OF 1