

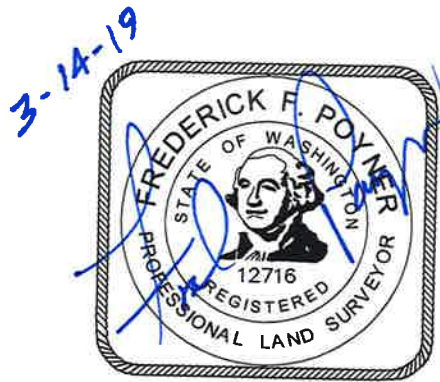
EXHIBIT "A"

That portion of the NW ¼ of the SE ¼ of Section 11, Township 31 North, Range 5 East, W.M. described as follows:

COMMENCING at the NW corner of the NW ¼ of the SE ¼ of said section 11 thence South 3° 10' 20" West along the West line of said subdivision a distance of 40.07 feet; thence North 89° 41' 11" East parallel with and 40.00 feet South of the North line of said subdivision a distance of 144.27 feet; thence South 3° 10' 20" West parallel with the West line of said subdivision a distance of 34.35 feet to the **TRUE POINT OF BEGINNING**; thence continue South 3° 10' 20" West a distance of 18.05 feet; thence North 88° 54' 16" East a distance of 144.13 feet; thence North 3° 10' 20" East a distance of 18.05 feet; thence South 88° 54' 16" West a distance of 144.13 feet to the **TRUE POINT OF BEGINNING**.

SUBJECT TO AND TOGETHER WITH all easements, covenants, conditions, reservations, and restrictions of record, if any.

Situate in the County of Snohomish, State of Washington.



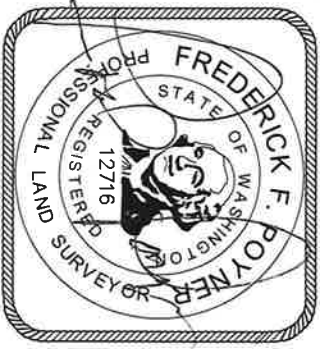
FOUND 4x4 CON. MON.
0.26' SOUTH AND 0.22' EAST
OF CALCULATED CORNER
USED CALC.

CALC'D CTR.
SECTION

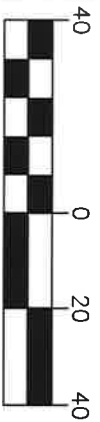
N89°41'11"E
2662.25'

EAST 1/4 CORNER
FND CON. MON.
IN CASE
7-2003

3-18-19

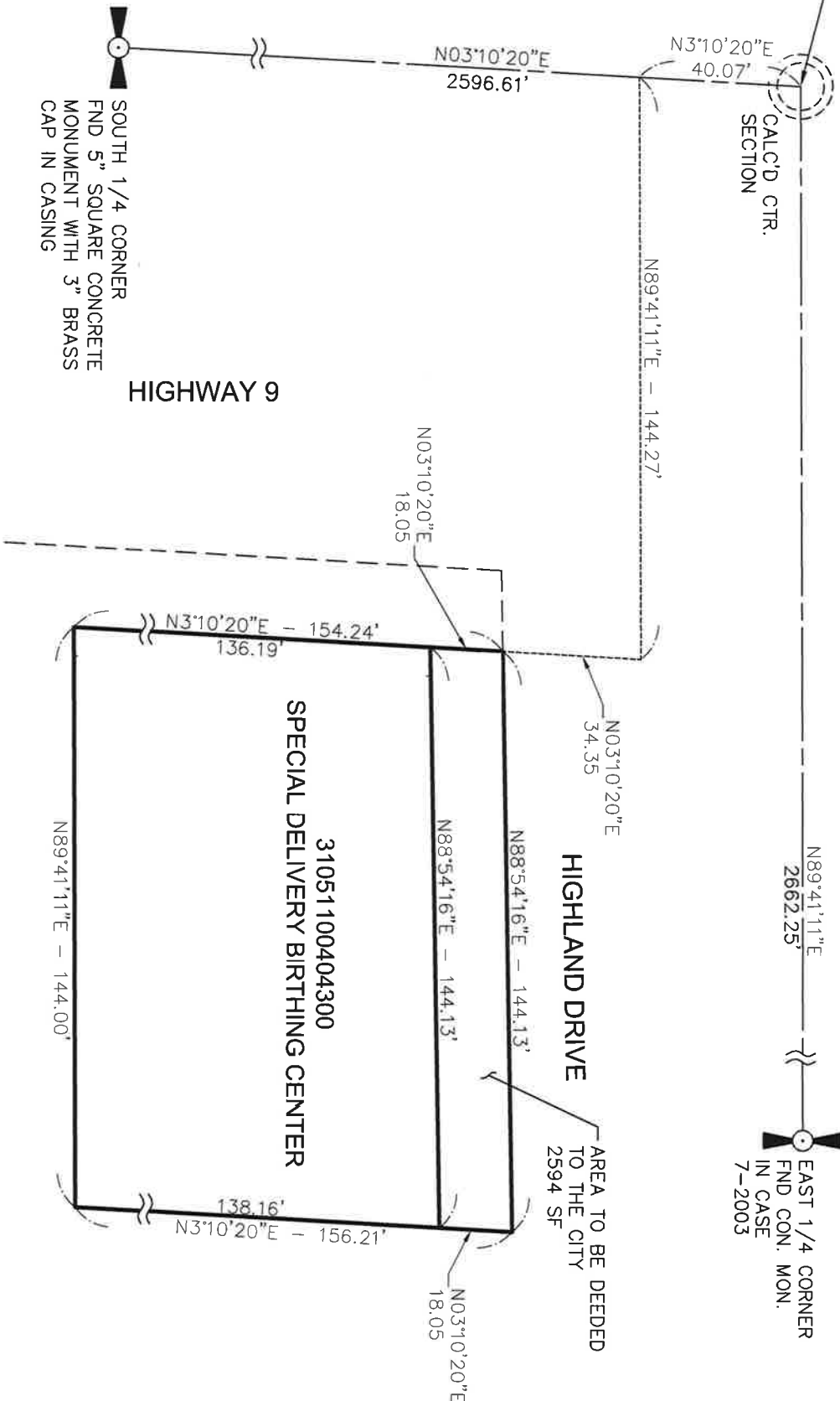


GRAPHIC SCALE



SOUTH 1/4 CORNER
FND 5" SQUARE CONCRETE
MONUMENT WITH 3" BRASS
CAP IN CASING

HIGHWAY 9



CASCADE SURVEYING
& ENGINEERING, INC.
P.O. BOX 326, ARLINGTON,
WA (360) 435-5551

EXHIBIT "B"

3/14/2019 10:47:08 AM
V:\21918\DWG\CONSTRUCTION\21918 COVER.DWG (EXHIBIT B)

JOB NO.: 21918
DATE: 01/22/2019
DWN. BY: JDH