



Twin Rock Pump Station Design-Build

Building Success

# Key Projects

CH2M HILL has successfully delivered projects that have enhanced the water quality for millions of people around the globe... and in your community.

The following represent a few of these benchmark projects.



## Cedar Water Treatment Facility

- Design-build-operate of the largest ultraviolet water treatment plant in the U.S.
- First VPP STAR award for safety in the State of Washington
- 2005 DBIA National Design-Build Excellence Award for water projects over \$15 million



## David L. Tippin Water Treatment Facility

- DBIA Water Systems Quality Award
- Maximizing planned enhancements resulted in \$8 million in scope additions
- Produced water 54 days ahead of schedule



## Wemlinger Water Treatment Plant

- 20-mgd design-build expansion
- Design completed within 90 days and construction started within 60 days of contract award
- Over \$12 million of design and construction delivered in 5 months



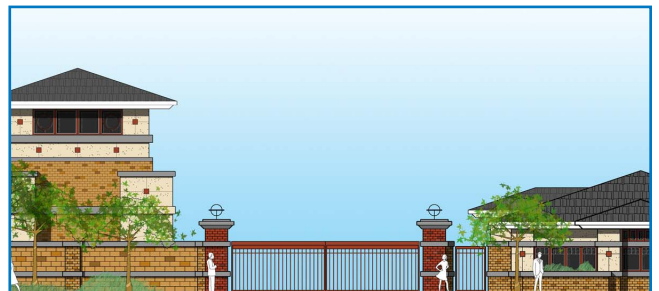
## Twin Rock Pump Station

- DBIA Systems Quality Award winner
- Delivered seven months ahead of schedule
- Over 60,000 hours worked with a zero recordable incident rate



## Twin Oaks Valley Water Treatment Plant DBO

- Design-build-operate delivery of the world's largest submerged membrane filtration water treatment plant
- Scope includes design, permit, and construction of 100-mgd WTP and related flow control facilities
- \$159 million to design and build the treatment plant and a base operation and maintenance fee of \$6 million per year



## City of Clovis Sewage Treatment/Water Reuse Facility

- Design-build-operate of a new \$37-million, 2.8-mgd facility
- Architecture will seamlessly blend into the surrounding neighborhood and landscapes
- Scope includes design, construction, operations, and maintenance of the facility for a 10-year period

# Building Success

Our mission is to be the leading provider of full-service, integrated project delivery in the global water market. We are focused on client service, our people, and our partners.

## Awards

Building success results in client recognition.

**David L. Tippin WTF**  
City of Tampa, FL,  
2002 DBIA Water  
Systems Quality Award



**Twin Rock Pump Station Design-Build**  
Colorado Springs Utilities,  
2003 DBIA Water Quality  
Systems Award



**Fallingwater WWTP and Buried Utilities Project**  
Western Pennsylvania  
Conservancy,  
2005 DBIA National  
Design-Build Award for  
water projects under \$15 million



**Wemlinger WTP Improvements**  
City of Aurora, CO,  
2005 DBIA National  
Design-Build Award for  
water projects over  
\$15 million



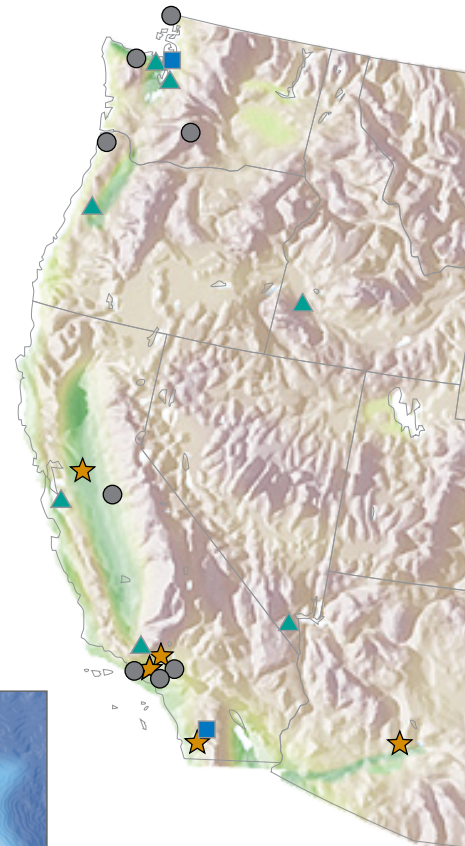
**Cedar Water Treatment Facility**  
Seattle Public Utilities,  
2005 National Design-Build  
Excellence Award  
for water projects  
over \$15 million



**Swoope WTP**  
City of Winter Park, FL,  
2006 DBIA National  
Merit Award



## CH2MHILL U.S. Design-Build/Operate Projects



Globally, we have over 100 Design-Build/Operate projects in the following market segments:

### ▲ CONVEYANCE/PUMP STATIONS/OTHER

Over 15 projects including:

- SNWA IPS-2 Bypass Pipeline / New / Design-Build
- Silver Creek Recycled Water Pipeline / New / Design-Build
- Hawaii Cesspools Conversion / New / Design-Build
- Twin Rock Pump Station / New / Design-Build
- JEA Water Wells / New / Design-Build

### ■ WATER TREATMENT PLANTS

Over 30 projects including:

- Twin Oaks Valley WTP / New / Design-Build
- Cedar WTP / New / Design-Build-Operate
- Ave Maria WTP / New / Design-Build-Operate
- David L. Tippin WTF / Expansion / Design-Build
- Wemlinger WTP / Expansion / Design-Build

# ENGINEERING NEWS-RECORD RANKINGS

(2006 based on 2005 recordings)

## DESIGN—BUILD

ENR, June 3, 2006

- #8 Top Design-Build Firms
- #1 Construction Management-for-Fee
- #1 Program Management Firms
- #3 Combined Design and CM/Professional Service

## CONSTRUCTION

ENR, May 22, 2006

- #10 Top Domestic Heavy Contractors
- #38 Top Contractors

## DESIGN

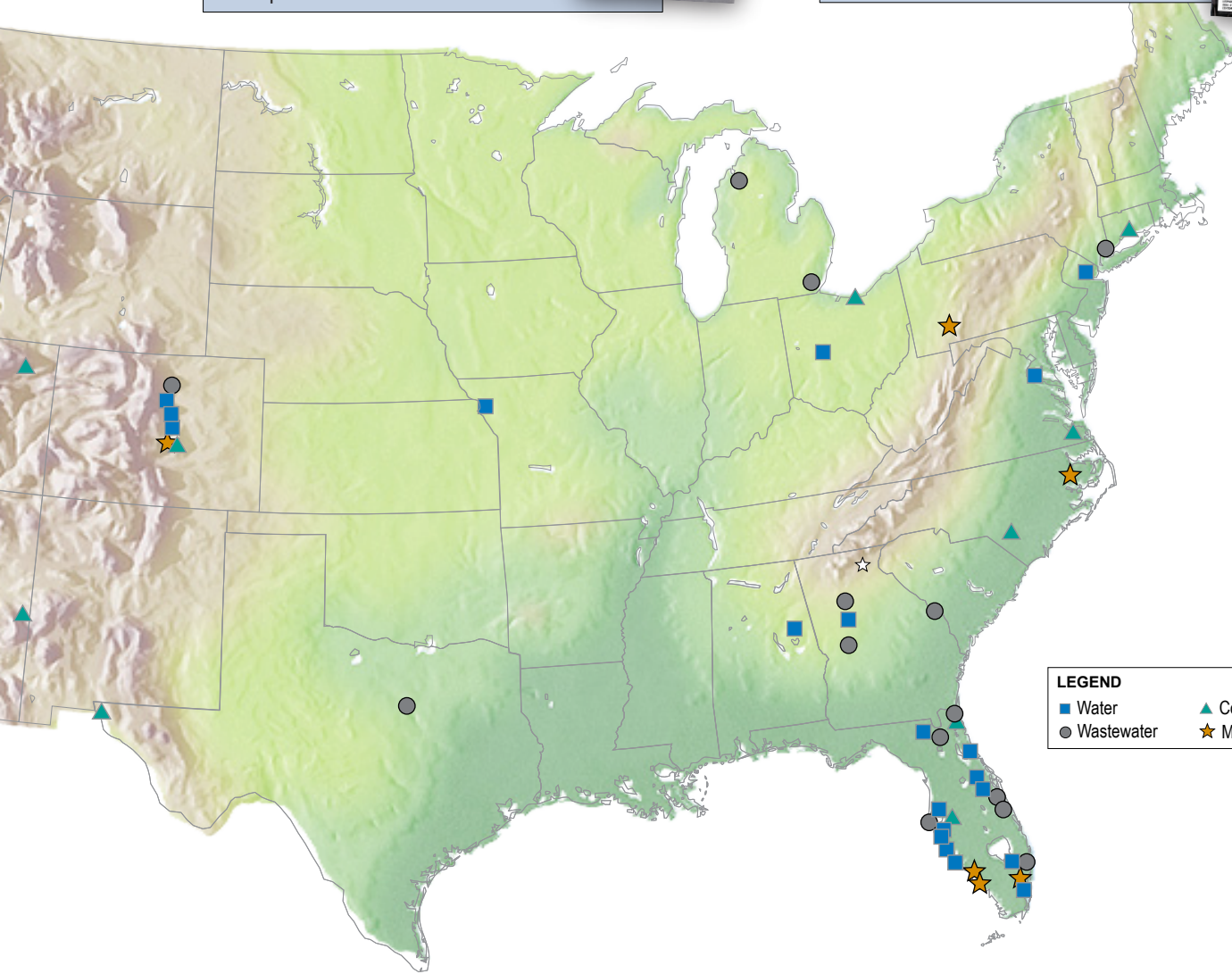
ENR, July 2006

- #5 Top Design Firms
- #1 Wastewater Treatment
- #1 Sewerage and Solid Waste
- #2 Water Supply
- #2 Treatment and Desalination
- #10 Transmission Lines and Aqueducts

## ENVIRONMENTAL

ENR, July 3, 2006

- #1 Environmental Firms



LEGEND	
■ Water	▲ Conveyance/Other
● Wastewater	★ Multiple Facilities

### ● WASTEWATER TREATMENT PLANTS

Over 40 projects including:

- City of Clovis Sewage Treatment/Water Reuse Facility / New / Design-Build-Operate
- Ave Maria Water Reuse Facility / New / Design-Build-Operate
- Stamford Biosolids WWTP / Expansion / Design-Build
- Fallingwater WWTP Phases I&II / Expansion / Design-Build
- Traverse City WWTP Phases I&II / Expansion / Design-Build

### ★ MULTIPLE FACILITIES

Over 15 projects including:

- Program Management and Design-Build Projects / New / Upgrades / Design-Build
- Bonita Springs Utilities Projects / New / Upgrades / Expansion / Design-Build
- Stockton Water and Wastewater Services / Expansion / Design-Build-Operate
- Sunrise, FL Miscellaneous Capital Improvements / Upgrades / Expansion / Design-Build
- SoCal Water Projects / New / Upgrades / Design-Build

TS

Build-Operate  
Operate  
ign-Build  
Build

# Award Winning Projects

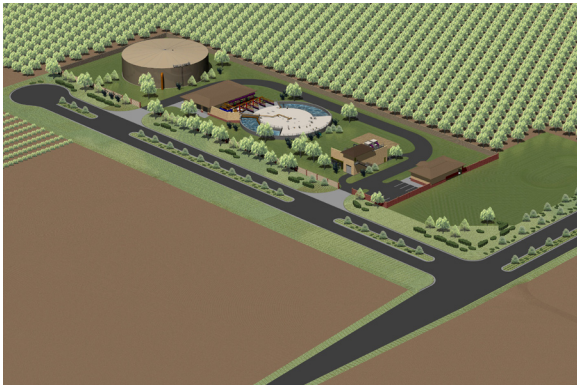
from one of the top 50  
contractors in the U.S.

... such as the **David L. Tippin Water Treatment Facility** which won the Water Systems Quality Award from the Design Build Institute of America—a result of overall performance and quality on our fixed-cost design-build work.



## Plants

that don't cost a lot  
to operate



Our innovative design for the **Clovis Water Treatment Facility** uses membrane filtration and the Siemens Cannibal® solids reduction technology to save millions in operational costs.

## Best Value

for every client —  
every budget



Large-scale use of submerged membranes at San Diego's **Twin Oaks Valley Water Treatment Plant** delivers long-term cost savings.

# Building Success

CH2M HILL proves the effectiveness of integrated project delivery techniques, providing engineering, construction, and operations services for successful water, wastewater, and water resources design-build projects nationwide. Serving a growing client

demand for single-source integrated project delivery, CH2M HILL currently manages design-build-operate projects with an annual volume of over \$1 billion, which ranks among the top 50 contractors in the U.S.

## Design that works



Design innovations at **Cedar Water Treatment Facility** coupled with design-build-operate project delivery, produced a savings of \$50 million over traditional procurement processes—and enabled Seattle to achieve its goal of meeting Leadership in Energy and Environmental Design (LEED™) Gold criteria.

## Delivery on time

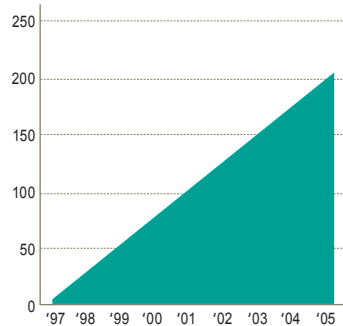


... or faster. We delivered Colorado Springs' **Twin Rock Pumping Station** seven months ahead of schedule, and our design innovations saved the utility \$5 million in construction costs.

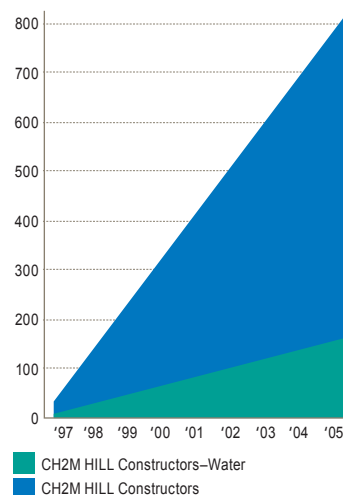
# Financial Stability

As an employee-owned company, CH2M HILL attracts the most qualified people to work on diverse projects. Our continued revenue growth also gives us the financial strength needed to deliver large projects.

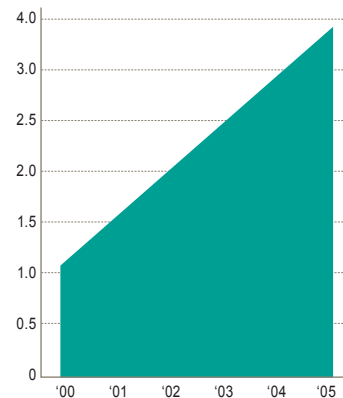
**Water Projects**  
Annual Gross Revenue  
CH2M HILL Constructors



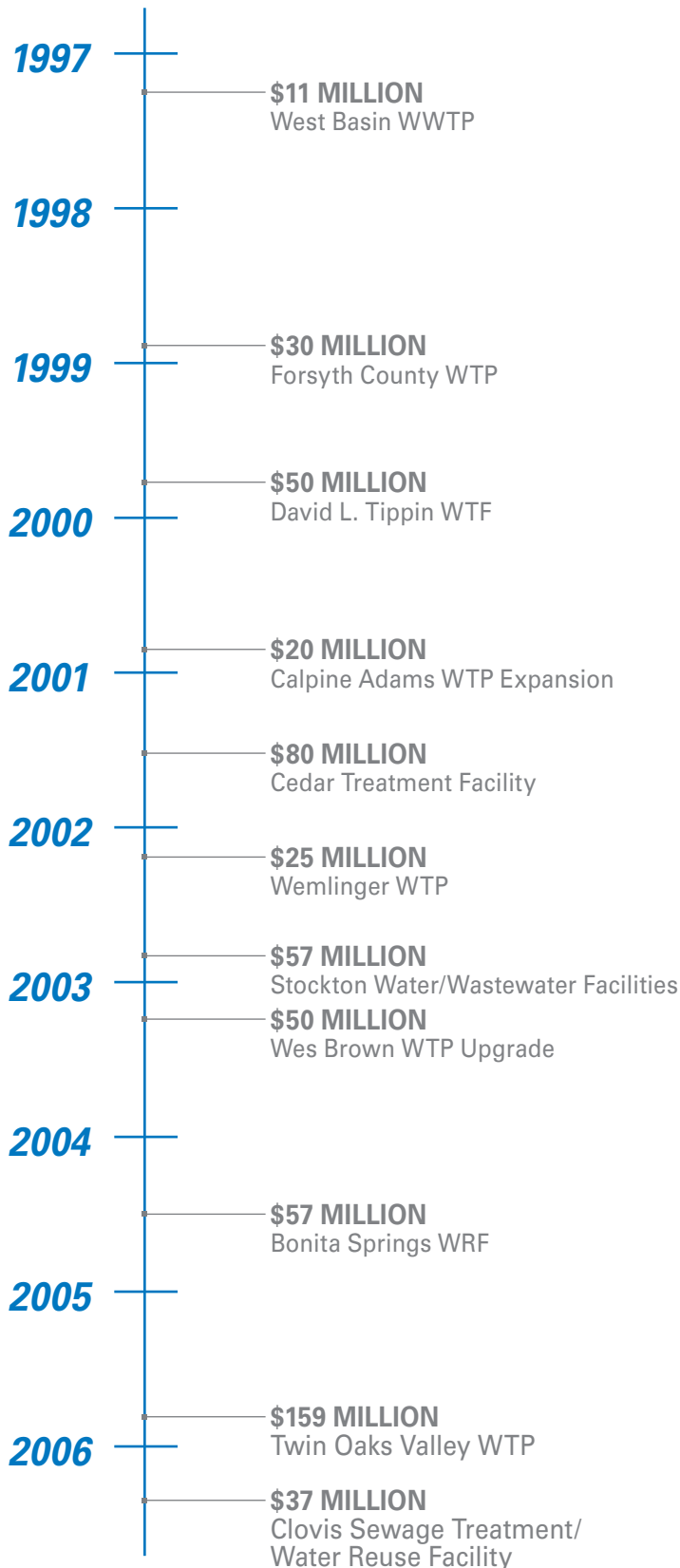
**Staff**



**CH2M HILL**  
Annual Gross Revenue  
(\$ billions)



Gross revenue includes revenue from unconsolidated joint ventures (CH2M HILL pro rata share) such as Kaiser-Hill Company, LLC.



## Project Highlights

**Cedar Water Treatment Facility**  
Cedar WTF meets LEED™ Gold criteria—exceeding requirements

**City of Clovis Sewage Treatment/Water Reuse Facility**  
Treatment will result in capital and operating cost savings

**David L. Tippin WTF**  
Delivered award-winning project without exceeding GMP

**Twin Rock Pump Station Design-Build**  
Delivered seven months ahead of schedule with savings of \$5 million

**Twin Oaks Valley WTP DBO**  
Submerged membranes produce superior quality water and cost savings

**Wemlinger WTP Improvements**  
Returned facility to service in time to offset drought



# Single-Source Integrated Project Delivery

CH2M HILL's project delivery teams operate in an integrated functional environment—we draw upon our design, construction, and operations personnel to work on projects encompassing a full range of delivery methods, including design-build, design-build-operate construction management, GC/CM, and CM-at-Risk.

## Solid foundations. Outstanding dedication.

As a leading innovator in the industry since 1946, CH2M HILL's financial performance is consistently sound. With 2005 gross revenues in excess of \$3.8 billion, we maintain strong bonding capabilities and substantial lines of credit that reduce project costs. Our success is largely due to the ingenuity and determination of our more than 18,000 employee-owners located in hundreds of offices worldwide. They commit themselves to achieving the highest rates of customer satisfaction by providing clients with fresh ideas, faster delivery, and complete accountability.



Our work on the Cedar Water Treatment Facility was honored as the first construction project in Washington State to ever receive the VPP STAR Safety Award, and only the 16th ever in the U.S.

As a VPP Star Award recipient our approach to health and safety begins with well-trained, qualified personnel. Add implementation of behavior-based loss prevention programs, along with the systematic screening of partner and subcontractor candidates, and the result is an incident rate less than half the industry average. In addition, we develop and implement our own project- and program-specific quality control processes that enable us to complete projects on time, within budget, and to the highest performance standards.

## Delivering extraordinary and successful solutions.