

NOTES: This topo map is to be used only to generalize the direction of flow. Locations of the points were estimated from an orthophoto (versus ground measurement) and thus accuracy is reduced. All elevations are based on an arbitrary datum of 100.00 ft with the TBM at point 1. Points in bold have been modified or estimated to conform with the topography.

# Preliminary Subject to Review



EXPIRES 2/19/03

7-9-02

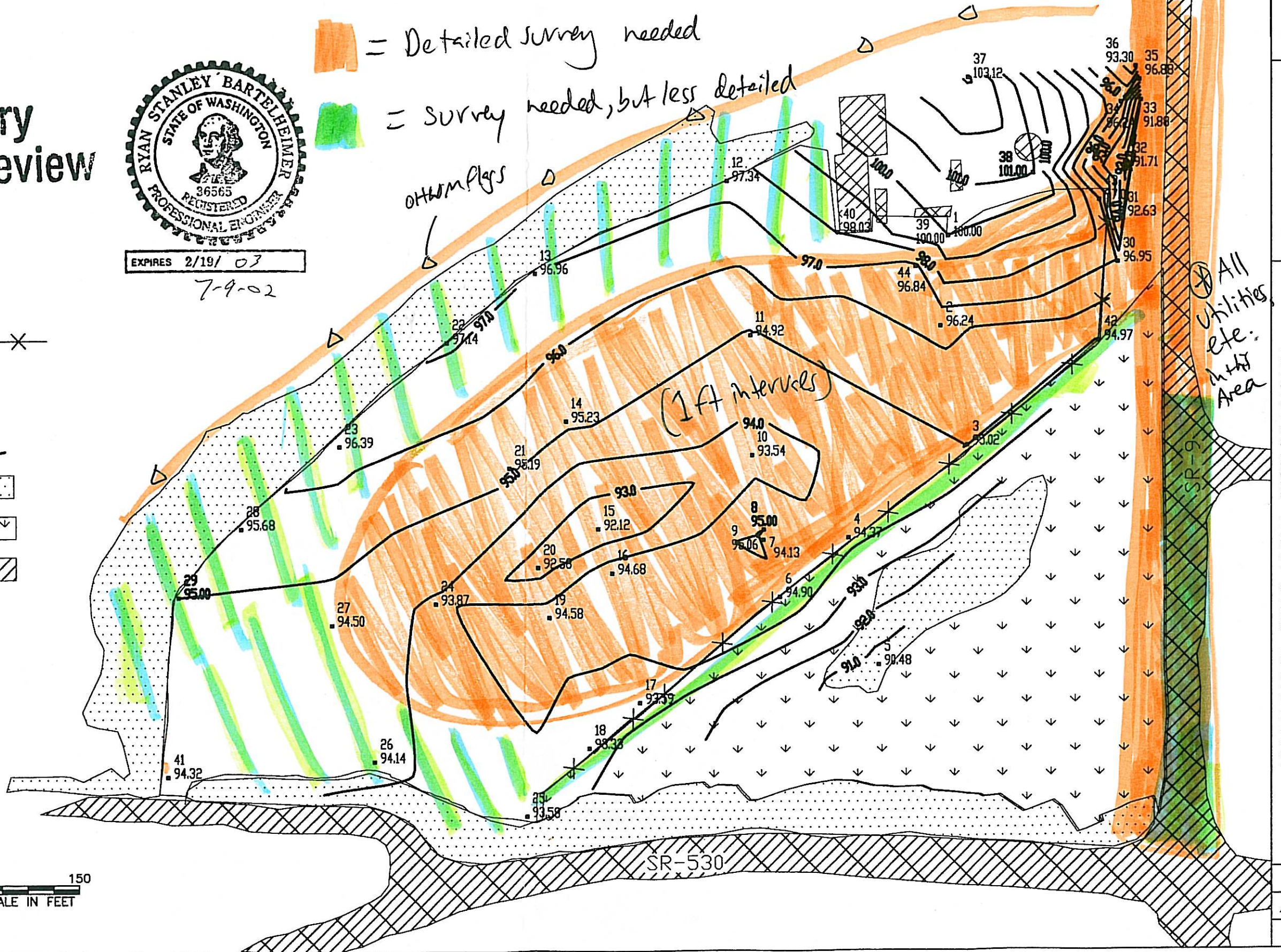
= Detailed survey needed  
 = Survey needed, but less detailed

- Existing Fence
- Surveyed point
- Field boundaries
- Contour Line
- Trees
- Existing Wetland
- Roads and Buildings

Sec. 3,  
T. 31 N,  
R. 5 E.W.M



0 150  
SCALE IN FEET



APPROVED BY	TITLE
DATE	DATE 7/02
DRAWN	CRH
TRACED	DATE
CHECKED	DATE
WA	
PROPOSED WETLANDS RESTORATION TOPOGRAPHY	
SNOHOMISH COUNTY, WASHINGTON	
SNOHOMISH CONSERVATION DISTRICT	
REVISION NO.	1
DRAWING NO.	Arlington2.DWG
SHEET 1 of 1	