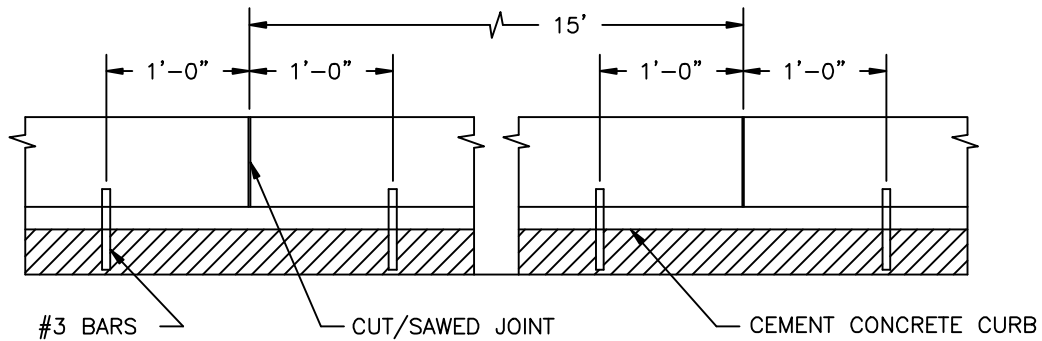


EXTRUDED CEMENT CONCRETE CURB



SPACING OF ANCHOR BARS

NOTES:

1. DUMMY JOINTS SHALL BE PLACED NOT TO EXCEED 15' ON CENTER. THRU JOINTS SHALL BE PLACED ONLY AT POINTS OF TANGENCY ON STREET ALLEY AND DRIVEWAY RETURNS AND WHERE THRU JOINTS OCCUR IN THE PAVEMENT SLAB.
2. CONCRETE SHALL BE CLASS 3000 OR COMMERCIAL WITH AIR-ENTRAINMENT.
3. AT THE CONTRACTOR'S OPTION CONCRETE CURBS MAY BE ANCHORED TO THE SIDE OF EVERY JOINT, OR BY USING AN ADHESIVE. THE ADHESIVE SHALL MEET THE REQUIREMENTS OF SECTION 9-20 OF THE WSDOT/APWA STANDARD SPECIFICATIONS FOR TYPE II EPOXY RESIN.



APPROVED BY	L. OLIVE
DATE	07/31/2008
REF STD SPEC	

DEPARTMENT OF PUBLIC WORKS STANDARD DETAILS
EXTRUDED CONCRETE CURB

STANDARD DETAIL NUMBER
R-200