

CITY OF ARLINGTON

AIRPORT BOULEVARD ROAD IMPROVEMENTS - PHASE 1B

PROJECT NO. P02.347
FEDERAL AID NO. STPUS-2693(004)



City of Arlington Officials

MAYOR
BARBARA TOLBERT

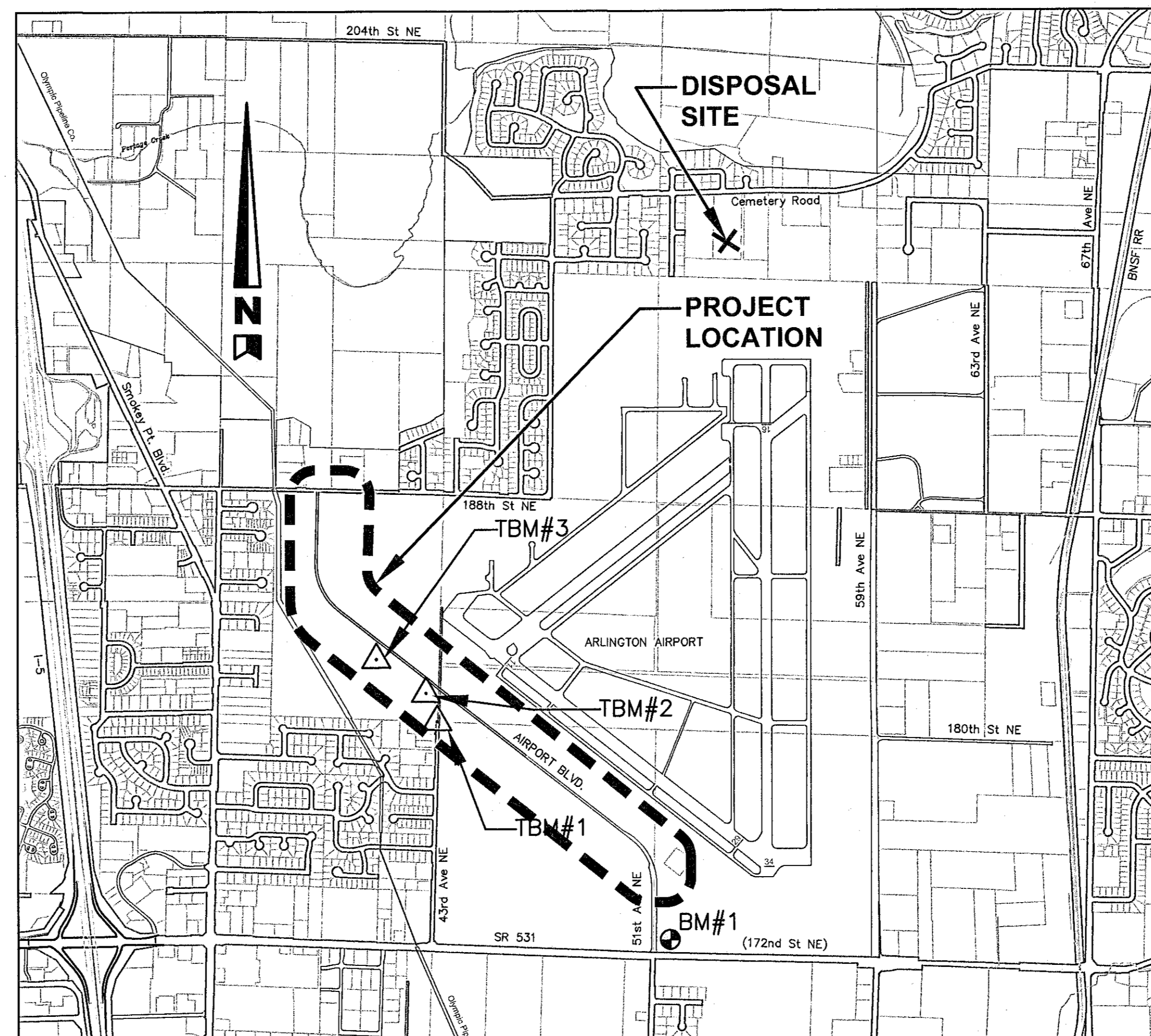
COUNCIL MEMBERS
STEVE BAKER
CHRIS RAEZER
DEBORA NELSON
KEN KLEIN
MARILYN OERTLE
RICHARD (DICK) BUTNER
RANDY TENDERING

PUBLIC WORKS DIRECTOR
JAMES KELLY, P.E.

SHEET INDEX

SHEET TITLE	SHEET NO.	REFERENCE SHEET NO.
COVER SHEET	1	-
ROADWAY SECTIONS AND LEGEND	2	RS1
ROADWAY SECTIONS	3	RS2
PLAN AND PROFILE - STA 10+00 TO STA 17+00	4	PP1
PLAN AND PROFILE - STA 17+00 TO STA 24+00	5	PP2
PLAN AND PROFILE - STA 24+00 TO STA 32+00	6	PP3
PLAN AND PROFILE - STA 32+00 TO STA 40+00	7	PP4
PLAN AND PROFILE - STA 40+00 TO STA 48+00	8	PP5
PLAN AND PROFILE - STA 48+00 TO STA 53+83.25	9	PP6
PLAN AND PROFILE - STA 53+83.25 TO STA 65+00	10	PP7
PLAN AND PROFILE - STA 65+00 TO STA 73+00	11	PP8
PLAN AND PROFILE - STA 73+00 TO STA 83+51.40	12	PP9
WATER MAIN DETAILS	13	WP1
WATER MAIN PROFILES	14	WP2
SANITARY SEWER PROFILES	15	SP1
INTERSECTION DETAILS	16	ID1
INTERSECTION DETAILS	17	ID2
CHANNELIZATION AND SIGNING PLAN	18	CH1
CHANNELIZATION AND SIGNING PLAN	19	CH2
RAIN GARDEN PLANTING PLAN & DETAILS	20	L1
LANDSCAPING PLANTING PLAN & DETAILS	21	L2
IRRIGATION PLAN - STA 10+00 TO STA 21+00	22	LP1
IRRIGATION PLAN - STA 54+00 TO STA 73+00	23	LP2
IRRIGATION PLAN - STA 73+00 TO STA 83+00	24	LP3
IRRIGATION LEGEND, DETAILS AND NOTES	25	LP4

SEC 21 T31N R5E WM



VICINITY MAP
N.T.S.

DISPOSAL SITE:
CONTRACTOR MAY
DISPOSE OF SURPLUS
SOIL MATERIAL ON
AIRPORT PROPERTY
AS DIRECTED BY THE
CITY.

AECOM

710 2nd Ave, Suite 1000
Seattle, WA 98104
T 206.624.9349

WWW.AECOM.COM

APPROVED FOR CONSTRUCTION

J. X. Kelly

JAMES KELLY, P.E.
PUBLIC WORKS DIRECTOR

05-16-13

DATE APPROVED

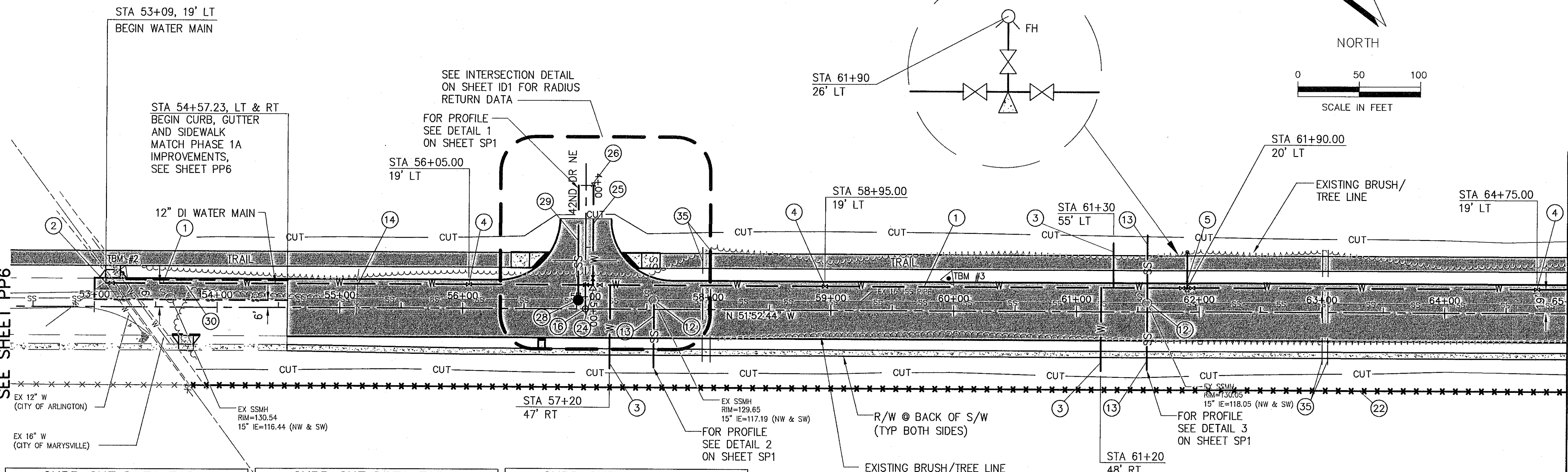
SEC 21 T31N R5E WM

CONSTRUCTION NOTES

- ① INSTALL DUCTILE IRON PIPE FOR WATER MAIN 12 IN. DIAM.
- ② CONNECT 12" WATER MAIN TO EXISTING 12" WATER MAIN. SEE DETAIL 1, SHEET WP1.
- ③ INSTALL 2" WATER SERVICE PER CITY STANDARD DETAIL W-050. BURY METER BOX AND INSTALL MARKER POST.
- ④ INSTALL 12" GATE VALVE AND VALVE BOX PER CITY STANDARD DETAIL W-190.
- ⑤ INSTALL 12" FLANGED TEE WITH 2-12" GATE VALVES FLxMJ (NW & SE) 1-6" GATE VALVE FLxMJ AND VALVE BOX PER CITY STANDARD DETAIL W-190. INSTALL THRUST BLOCK PER CITY STANDARD DETAIL W-160. INSTALL FIRE HYDRANT ASSEMBLY PER CITY STANDARD DETAIL W-010 WITHOUT CONCRETE PAD AND FIRE HYDRANT MARKER PER CITY STANDARD DETAIL W-015.
- ⑫ ADJUST SANITARY SEWER MANHOLE TO GRADE. SEE SHEET SP1 FOR RIM ELEVATIONS.
- ⑬ INSTALL PVC SANITARY SEWER PIPE 6 IN. DIAM. CONNECT 6" SANITARY SEWER LINE TO EXISTING MANHOLE. INSTALL TEMPORARY PLUG AT END OF LINE AND PROVIDE SURFACE MARKER PER CITY STANDARD DETAIL SS-090. SEE SHEET SP1 FOR PROFILES.
- ⑭ STA 55+13.5, 32' LT. TO 6' RT. REMOVE 28 LF OF BARB WIRE FENCE AND RELOCATE 1 EA - CHAIN LINK GATE (10' WIDE BY 6' HIGH) TO STA 71+30, LT. AS DIRECTED BY THE ENGINEER.
- ⑮ INSTALL MONUMENT CASE AND COVER PER CITY STANDARD DETAIL R-130 STA 56+99.97.
- ⑯ STA 53+93.6 TO 65+00, 63.2' RT. INSTALL 6' HIGH CHAIN LINK FENCE TYPE 3 PER WSDOT STANDARD PLAN L-20.10-02. CONNECT TO NEW 20' DOUBLE GATE.
- ⑰ STA 57+06, 19' LT., INSTALL 1-12"x8" TEE FL X FL / 2-12" GATE VALVES FL X MJ AND 1-8" GATE VALVE FL X MJ WITH BLOCKING.
- ⑱ INSTALL DUCTILE IRON PIPE FOR WATER MAIN 8 IN DIA. 80 LF.
- ⑳ TEMP. CAP & BLOCK. INSTALL BLOW-OFF PER CITY OF ARLINGTON STD DETAIL W-180.
- ㉑ INSTALL TYPE 1-54" MANHOLE.
- ㉒ INSTALL PVC SANITARY SEWER PIPE 8 IN DIA. CONNECT TO NEW MANHOLE PLUG AT END OF LINE AND PROVIDE SURFACE MARKER PER CITY STANDARD DETAIL SS-090. SEE SHEET SP1 FOR PROFILE.
- ㉓ SAWCUT ALONG EXISTING LANE STRIP. REMOVE EXISTING ASPHALT. PATCH PER CITY STANDARD DETAIL R-140. PROTECT EX. CURB IN PLACE.
- ㉔ CONTRACTOR SHALL INSTALL 2-2" PVC CONDUITS (TOTAL LENGTH 200 LF PER LOCATION) IN OPEN TRENCH PROVIDED BY OTHERS. BACKFILL SHALL BE PROVIDED BY OTHERS.

BEGIN PHASE 1B CONSTRUCTION
SEE SHEET PP6

MATCH LINE STA 65+00
SEE SHEET PP8



CURB CUT DATA TABLE

STA (LT & RT)
54+00
54+30
54+60
54+90
55+20
55+50
55+80
56+10
57+90
58+20
58+50
58+80
59+10

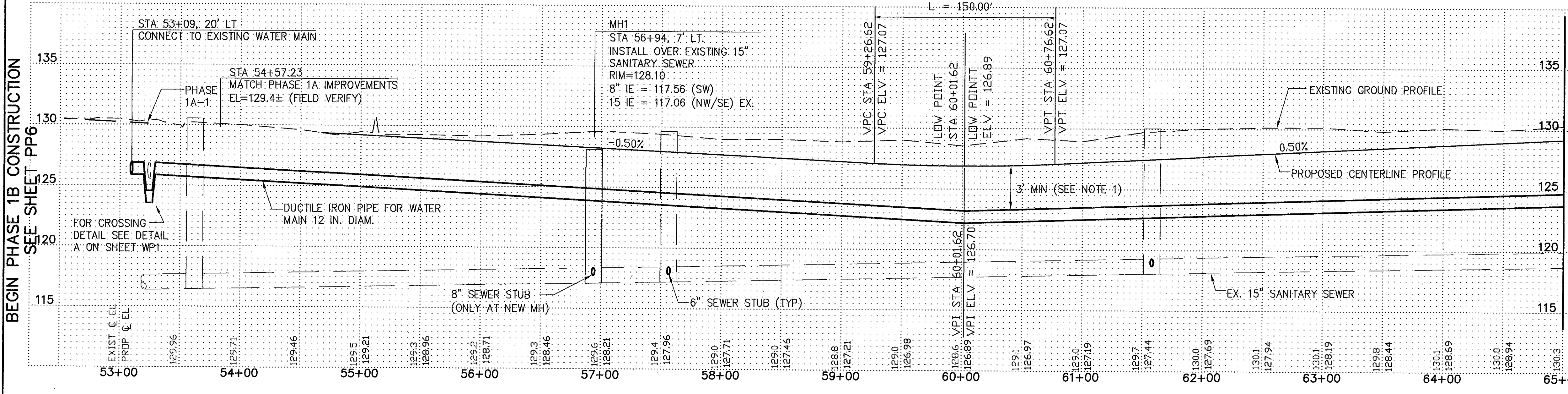
CURB CUT DATA TABLE

STA (LT & RT)
59+40
59+70
60+01.62
60+30
60+60
60+90
61+20
61+50
61+80
62+10
62+40
62+70
63+00

CURB CUT DATA TABLE

STA (LT & RT)
63+30
63+60
63+90
64+20
64+50
64+80

AIRPORT BOULEVARD



- NOTES:**
1. MAINTAIN 3' MINIMUM COVER UNDER ROADWAY.
 2. BENDS TO BE FURNISHED WITH MECHANICAL RESTRAINED JOINTS PER CITY STANDARD 4-2.06.

PLAN CHECK	BY	DATE			
DATE	NO.	REVISION	BY		
DESIGNED BY: BJH & DLM		DRAWN BY: MPN			



APPROVED FOR CONSTRUCTION
James Kelly
 JAMES KELLY, PE
 PUBLIC WORKS DIRECTOR
 05-16-13
 DATE APPROVED:



AECOM
 710 2nd Ave, Suite 1000
 Seattle, WA 98104
 T 206.624.9349
 WWW.AECOM.COM

CITY OF ARLINGTON
 AIRPORT BOULEVARD ROAD IMPROVEMENTS
 PLAN AND PROFILE
 STA 53+83.25 TO STA 65+00

REFERENCE SHEET NO.
PP7
 SHEET 10 OF 25 SHEETS

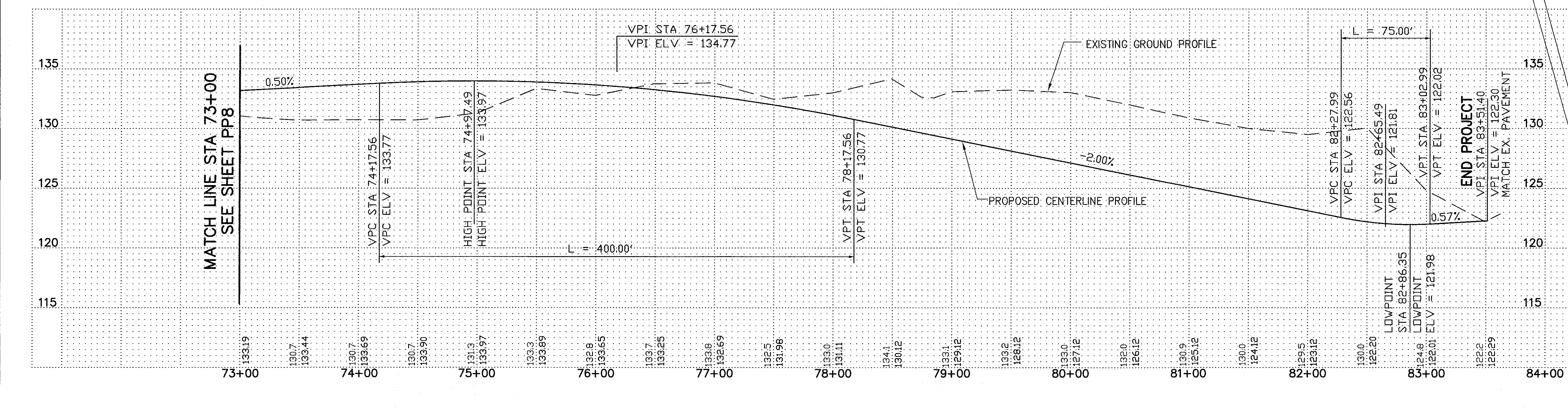
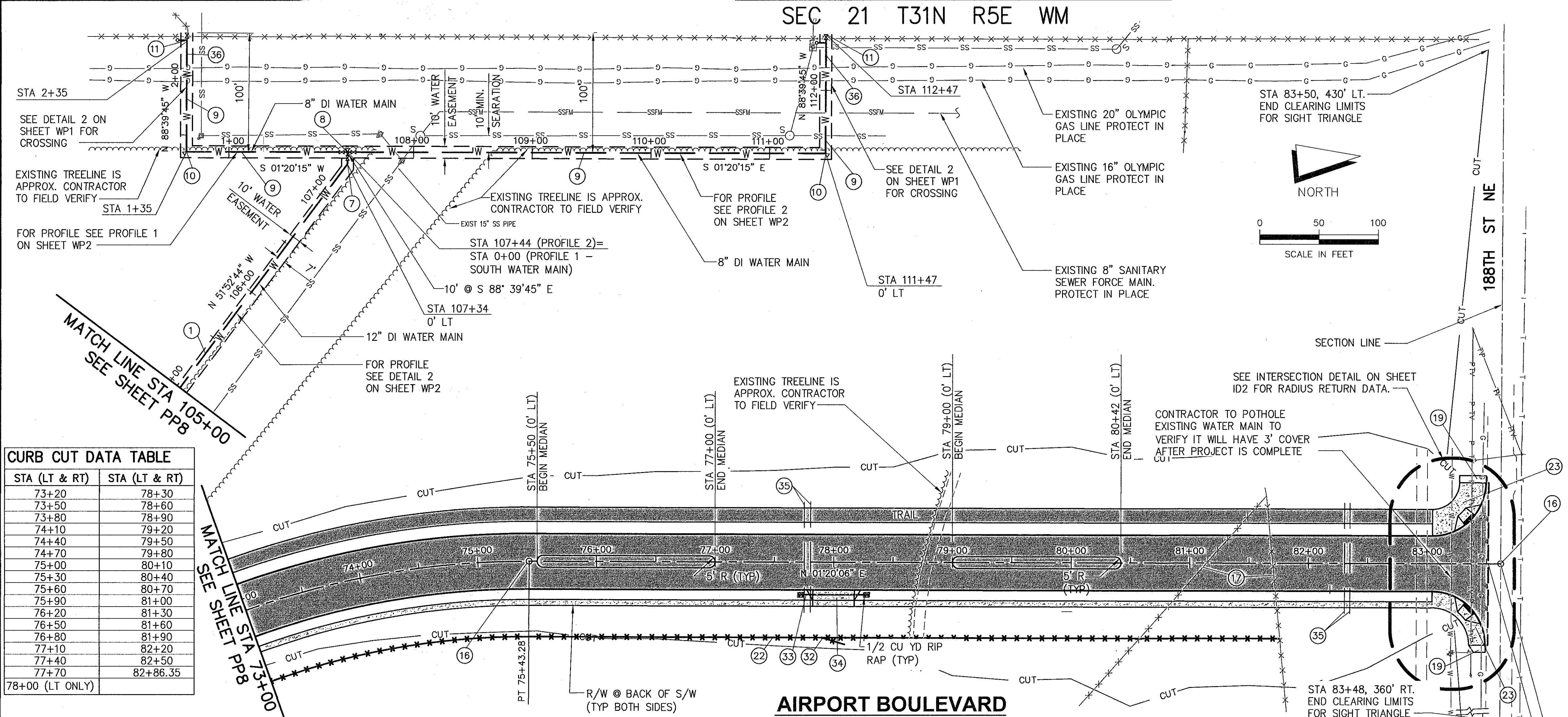
SEC 21 T31N R5E WM

CONSTRUCTION NOTES

- 1 INSTALL DUCTILE IRON PIPE FOR WATER MAIN 12 IN. DIAM.
- 7 INSTALL BENDS AND DEFLECT PIPES AT JOINTS TO ACHIEVE NECESSARY ALIGNMENT. JOINT DEFLECTION ANGLE TO BE LESS THAN HALF MANUFACTURER'S RECOMMENDATION. INSTALL THRUST BLOCK PER CITY STANDARD DETAIL W-160. MEGA-LUG RESTRAINTS SHALL BE USED FOR ALL BENDS.
- 8 INSTALL 12" FLANGED TEE WITH 1-12" GATE VALVE FLxMJ (E). INSTALL 2-12"x8" REDUCERS FLxFL (N&S) AND 2-8" GATE VALVES FLxMJ (N&S). INSTALL VALVE BOX FOR EACH VALVE PER CITY STANDARD DETAIL W-190.
- 9 INSTALL DUCTILE IRON PIPE FOR WATER MAIN 8 IN. DIAM.
- 10 INSTALL 8" 90° BEND. INSTALL THRUST BLOCK PER CITY STANDARD DETAIL W-160. MEGA-LUG RESTRAINTS SHALL BE USED FOR ALL BENDS.
- 11 DISCONNECT EXISTING BLOWOFF AT END OF EXISTING 8" WATER MAIN. INSTALL 8" GATE VALVE AND CONNECT 8" WATER. FIELD VERIFY DEPTH OF EXISTING 8" WATER MAIN PRIOR TO CONSTRUCTION AND ADJUST ALIGNMENT OF 8" WATER AS NEEDED TO CONNECT. RECONNECT BLOWOFF ASSEMBLY TO 8" WATER MAIN.
- 16 INSTALL MONUMENT CASE AND COVER PER CITY STANDARD DETAIL R-130. STA 75+43.28 & 83+61.96, 0' LT.
- 17 REMOVE 280 LF OF WIRE FENCE CONNECT REMAINDER TO NEW CHAIN LINK FENCE.
- 19 INSTALL ASPHALT RAMP. SEE DETAIL ON SHEET RS2.
- 22 STA 73+00 TO 81+76, 63.2' RT. INSTALL 6' HIGH CHAIN LINK FENCE TYPE 3 PER WSDOT STANDARD PLAN L-20.10-20. CONNECT TO EXISTING FENCES WITH PULL POST OR CORNER POST.
- 23 INSTALL CEMENT CONCRETE SIDEWALK AT RADIUS RETURN. SEE ROADWAY SECTION A OR B FOR SIDEWALK DETAILS.
- 32 INSTALL 20' DOUBLE GATE PER WSDOT STANDARD PLAN L-30.10-01
- 33 STA 77+75 TO 78+25, 27.25' RT., INSTALL 50 LF 12" Ø DI STORM DRAIN PER CITY STANDARD 3-3.01. MATCH RAINGARDEN ELVs.
- 34 STA 78+00, 23' RT., INSTALL 35' DRIVEWAY PER WSDOT STANDARD PLAN F-80.10-02, TYPE 3.
- 35 CONTRACTOR SHALL INSTALL 2-2" PVC CONDUITS (TOTAL LENGTH = 200 LF PER LOCATION) IN OPEN TRENCH PROVIDED BY OTHERS. BACKFILL SHALL BE PROVIDED BY OTHERS.
- 36 INSTALL COMB. AIR RELEASE/AIR VACUUM VALVE ASSEMBLY: 1 IN. PER CITY STANDARD DETAIL W-260.

CURB CUT DATA TABLE

STA (LT & RT)	STA (LT & RT)
73+20	78+30
73+50	78+60
73+80	78+90
74+10	79+20
74+40	79+50
74+70	79+80
75+00	80+10
75+30	80+40
75+60	80+70
75+90	81+00
76+20	81+30
76+50	81+60
76+80	81+90
77+10	82+20
77+40	82+50
77+70	82+86.35
78+00 (LT ONLY)	



END CONSTRUCTION
STA 83+61.96

END PROJECT
STA 83+51.40
MATCH EXISTING PAVEMENT
N 428,538.65
E 1,312,207.25



PLAN CHECK	BY	DATE	DATE	NO.	REVISION	BY
DESIGNED BY:		DRAWN BY:				
BJH & DLM		MPN				

APPROVED FOR CONSTRUCTION

James Kelly

JAMES KELLY, PE
PUBLIC WORKS DIRECTOR
05-16-13
DATE APPROVED:



AECOM

710 2nd Ave, Suite 1000
Seattle, WA 98104
T 206.624.9349
WWW.AECOM.COM

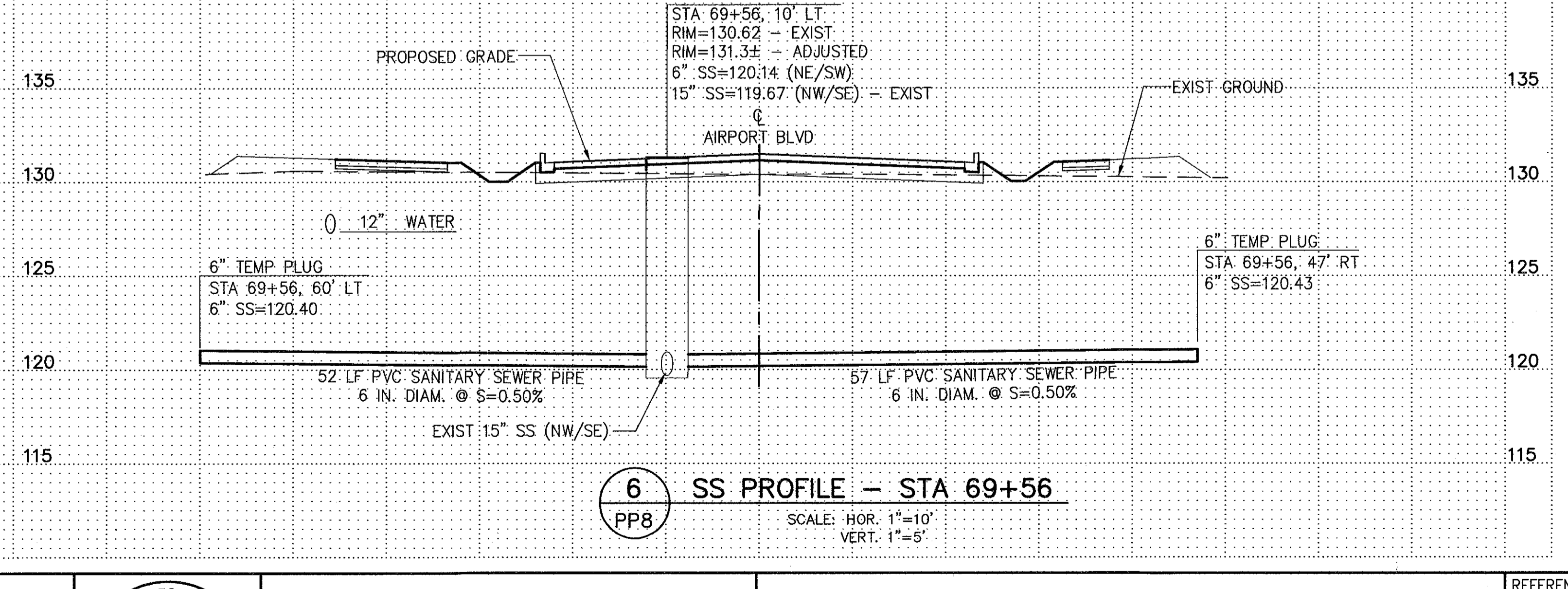
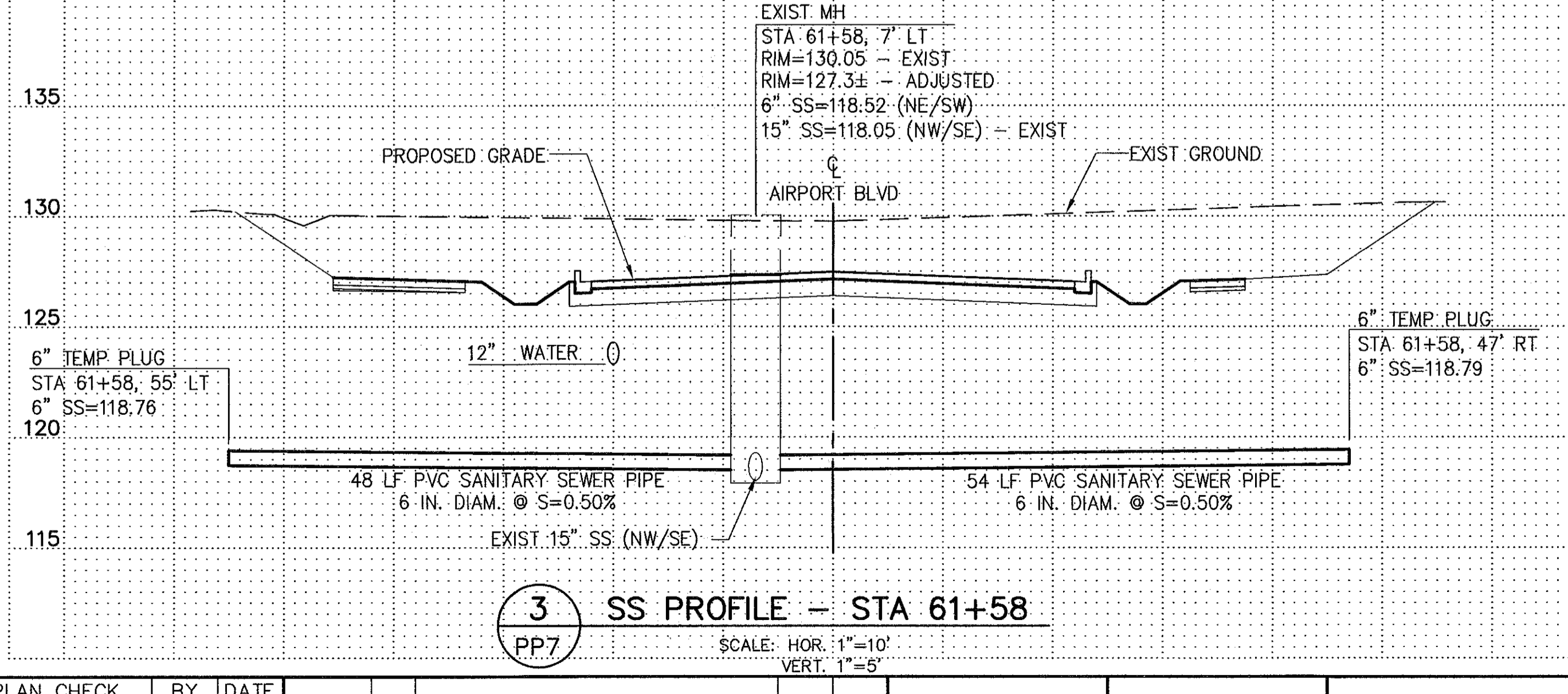
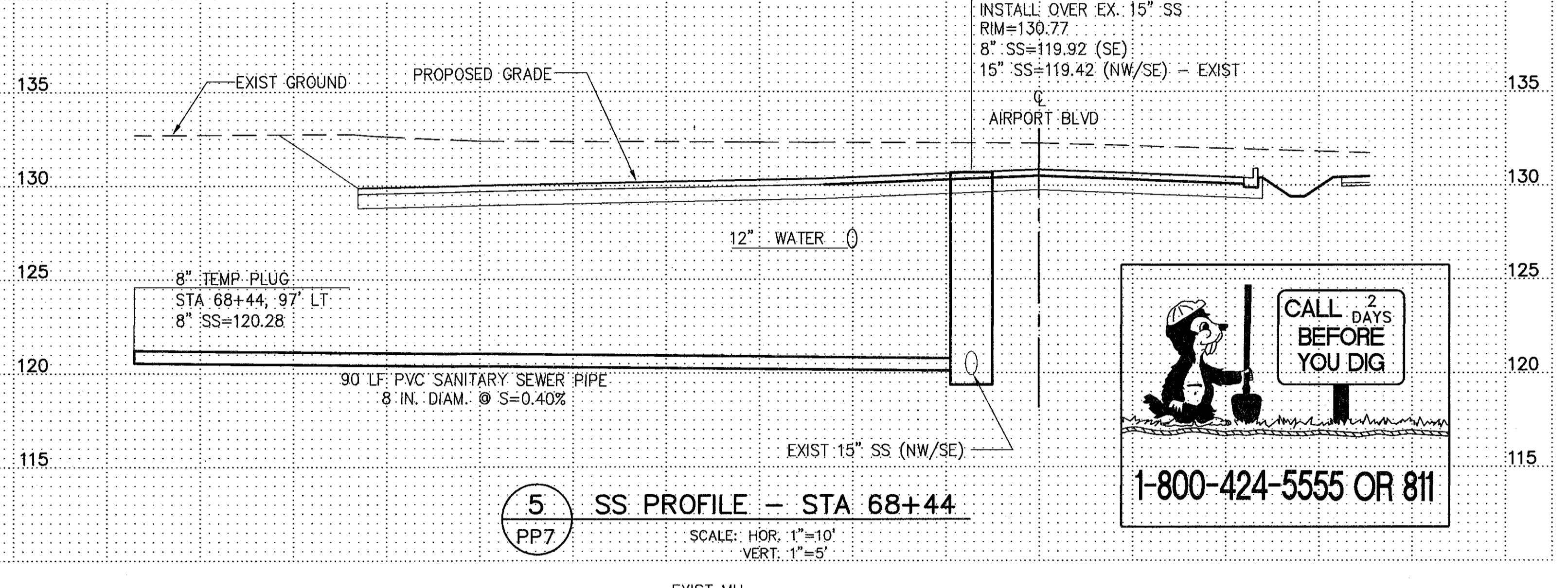
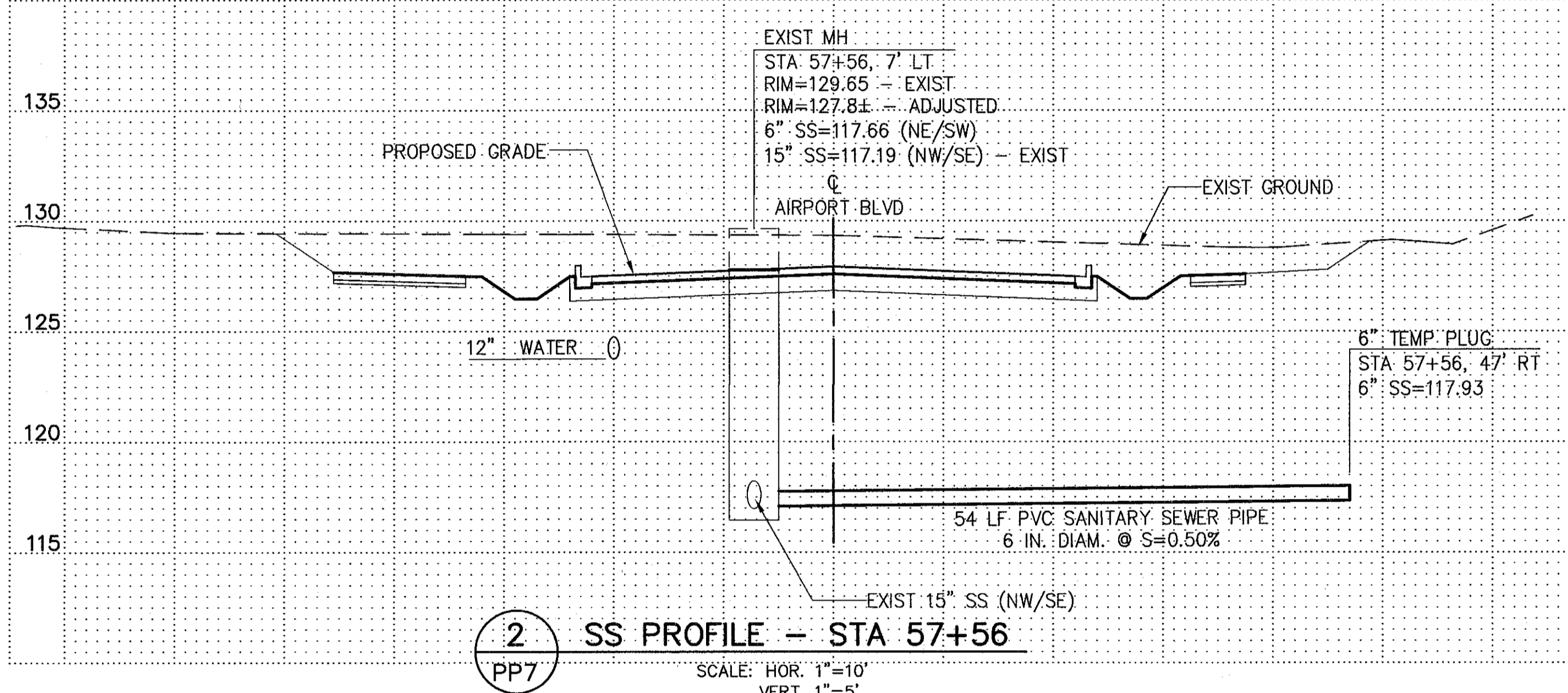
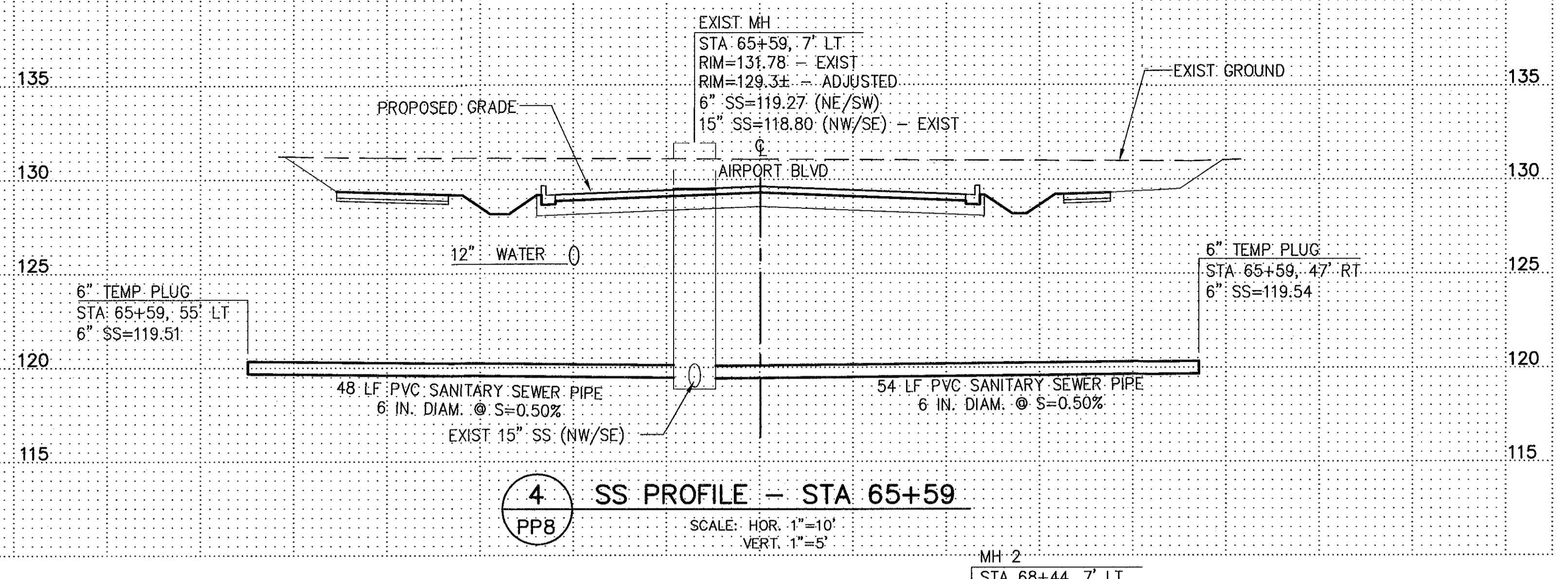
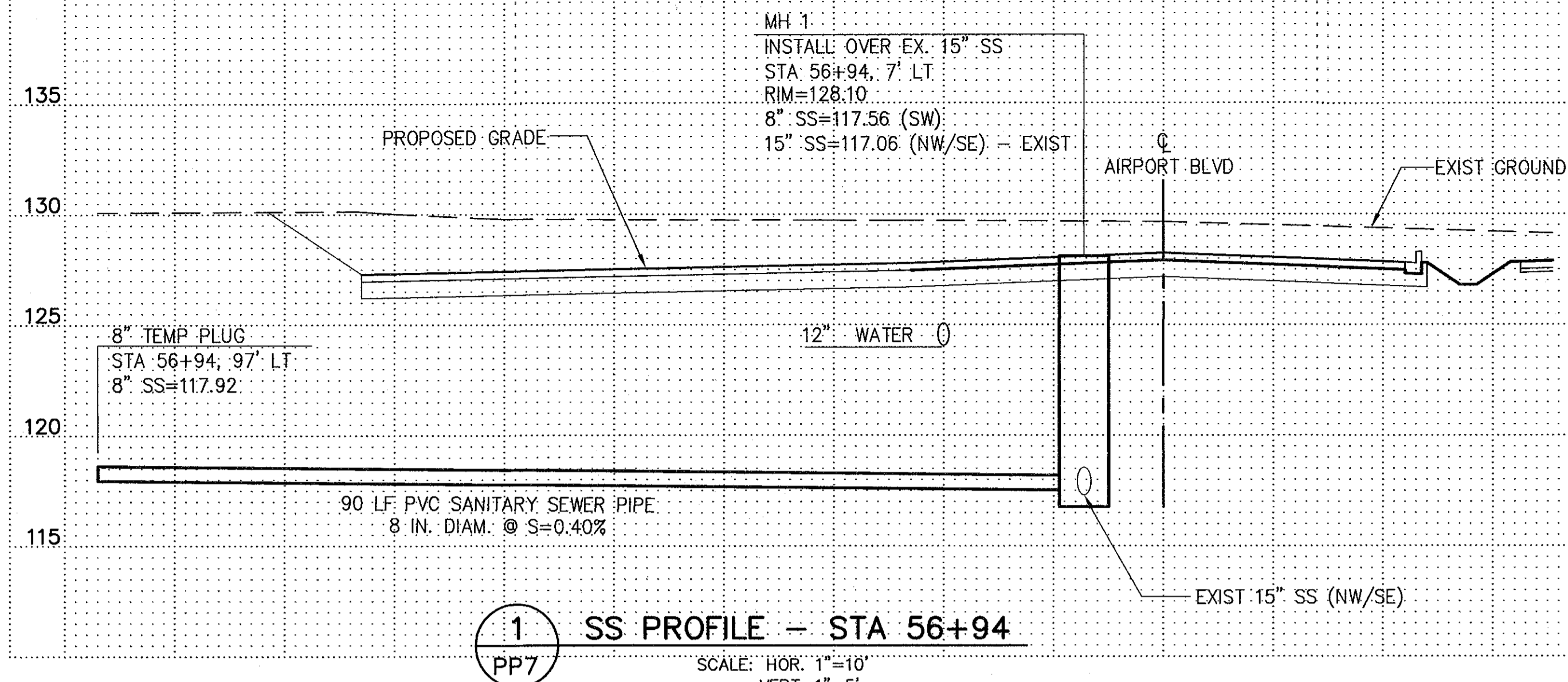
CITY OF ARLINGTON
AIRPORT BOULEVARD ROAD IMPROVEMENTS
PLAN AND PROFILE
STA 73+00 TO STA 83+51.40

REFERENCE SHEET NO. PP9

SHEET 12 OF 25 SHEETS

Plotted: Apr 26, 2013 - 8:47am randallm P:\Water\60283126 - Airport Blvd Phase 2 Design\CADD\Civil\Sheet\112736-FPT_PP9.dwg Layout Name: LAYOUT3
 Last Saved By: huschkae Apr 26, 2013 - 7:23am

Plotted: Apr 26, 2013 - 8:49am randalim P:\Water\6283126 - Airport Blvd Phase 2 Design\CADD\Civil\Sheet112736-SP1.dwg Layout Name: LAYOUT1
 Last Saved By: huschab Apr 24, 2013 - 12:56pm



PLAN CHECK	BY	DATE			
DESIGNED BY:	NO.	REVISION	BY		
DLM			MPN		



APPROVED FOR CONSTRUCTION

James Kelly
 JAMES KELLY, PE
 PUBLIC WORKS DIRECTOR
 05-16-13
 DATE APPROVED:

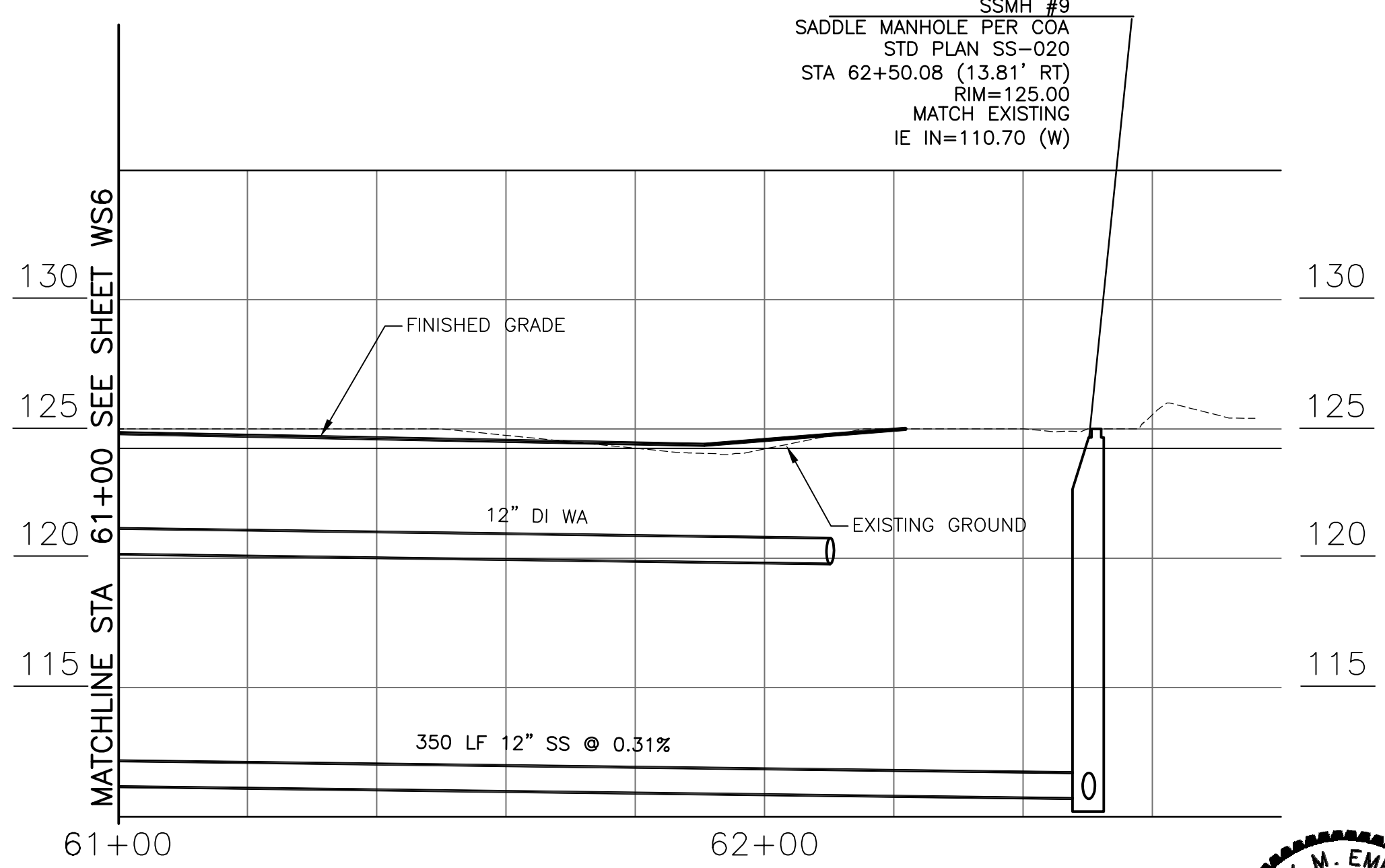
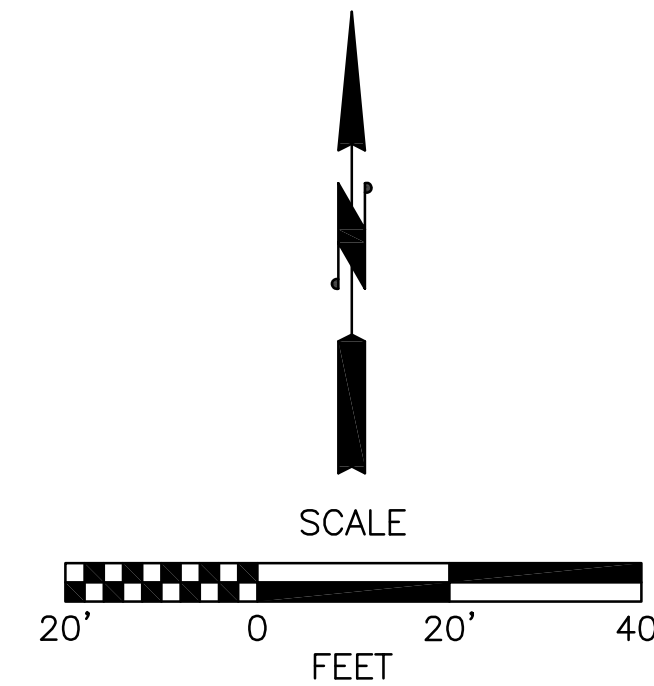
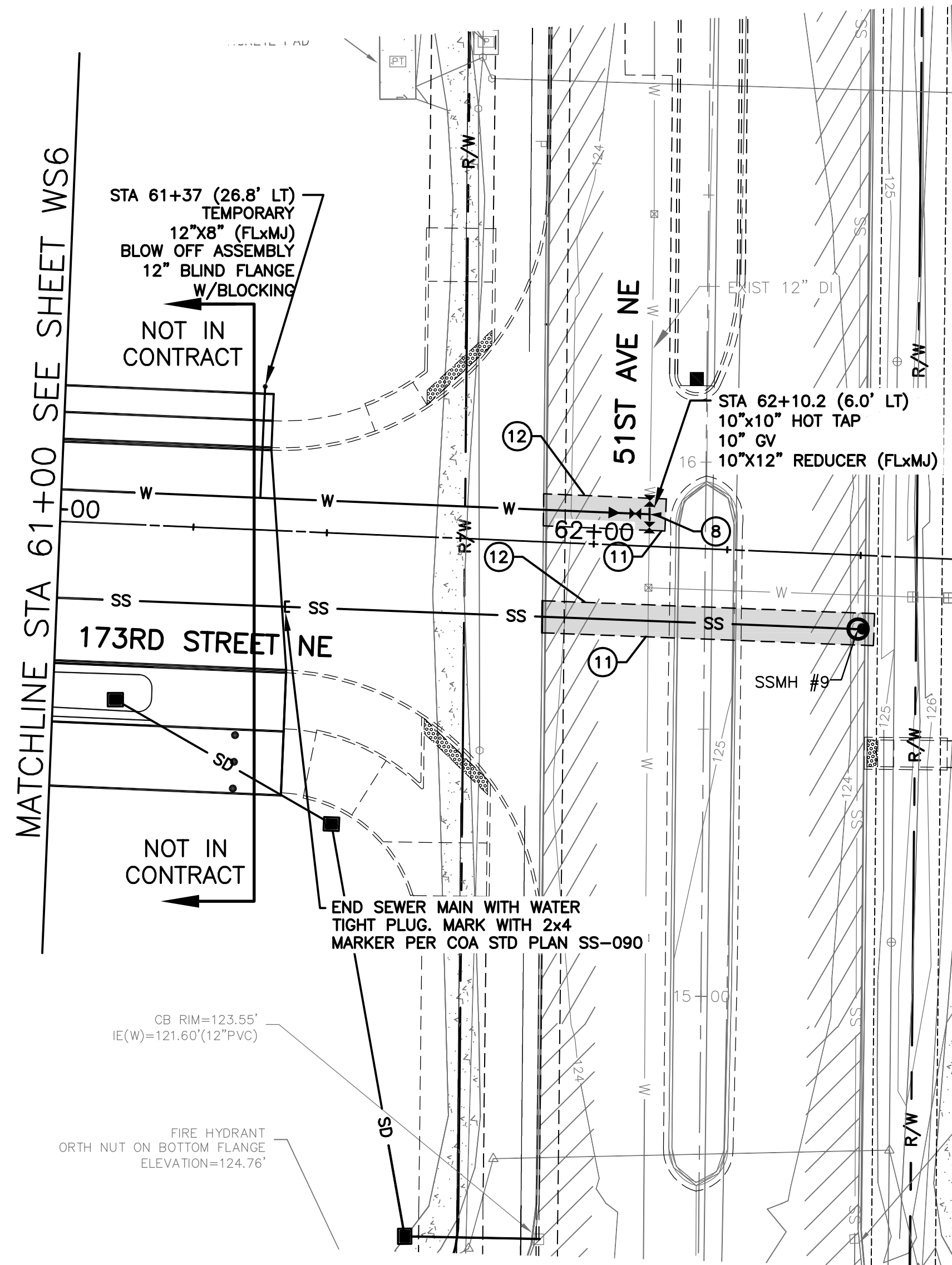


AECOM
 710 2nd Ave, Suite 1000
 Seattle, WA 98104
 T 206.624.9349
 WWW.AECOM.COM

CITY OF ARLINGTON
 AIRPORT BOULEVARD ROAD IMPROVEMENTS
 SANITARY SEWER PROFILES

REFERENCE SHEET NO.
 SP1
 SHEET
 15
 OF
 25
 SHEETS

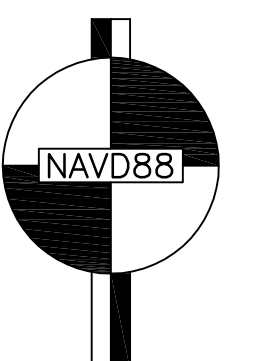
May 15, 2013 - 4:30pm Mickey.C. X:\Wilmington_City_of\Projects\20110044-173rd PI Extension\CADD\Plan Sheets\20110044-WS.dwg Layout Name: Don't Print



WATER AND SEWER NOTES:

- ① FIRE HYDRANT ASSEMBLY PER COA STD PLAN W-010. SET HYDRANT 3' FROM BACK OF SIDEWALK WHERE PRESENT.
- ② 2" COMMERCIAL WATER SERVICE PER COA STD DETAIL W-050. INSTALL ENTIRE SERVICE EXCEPT METER. SET METER BOX AT EXISTING GRADE THEN BURY UNDER 2' DEPTH PILE OF SOIL FOR PROTECTION. METER TO BE INSTALLED AT LATER DATE BY THE CITY.
- ③ SANITARY SIDE SEWER PER COA STD DETAIL SS090 AND DETAIL. MAINTAIN 7' MINIMUM COVER AT PROPERTY LINE.
- ④ ADJUST WATER METER BOX TO GRADE.
- ⑤ NOT USED.
- ⑥ 2" BLOW OFF ASSEMBLY PER COA STD PLAN W-180.
- ⑦ APPROXIMATE UTILITY LOCATION CONTRACTOR TO LOCATE UTILITIES PRIOR TO BEGINNING EXCAVATION. NOTIFY ENGINEER OF CONFLICTS.
- ⑧ TAPPING TEE PER COA STD PLAN W-200.
- ⑨ SANITARY SEWER MANHOLE PER COA STD DETAIL SS-010.
- ⑩ FILL LOW AREA WITH GRAVEL BORROW TO PROVIDE MIN 3.0' COVER OVER WATERLINE 10.0' MIN ON EACH SIDE OF WATER MAIN. CONSTRUCT IN ACCORDANCE WITH SECTION 2-03.3(14) OF THE STANDARD SPECIFICATIONS SEE DETAIL, SHEET WS11.
- ⑪ SAWCUT EXISTING PAVEMENT, SIDEWALK OR CURB AND GUTTER.
- ⑫ PAVEMENT RESTORATION PER DETAIL COA STD PLAN R-140.

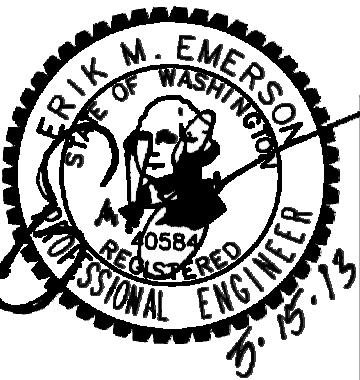
GENERAL NOTE:
SEE WATER AND SEWER GENERAL NOTES ON SHEET WS11.



CALL 2 BUSINESS DAYS BEFORE YOU DIG
1 800 424-5555
UTILITIES UNDERGROUND LOCATION CENTER

Pertee
425-252-7700 | 1-800-615-9900
2707 Colby Avenue, Suite 900
Everett, Washington 98201

CITY OF ARLINGTON
APPROVED FOR CONSTRUCTION
James Kelly
JAMES KELLY, PE
PUBLIC WORKS DIRECTOR
05-16-13
DATE APPROVED
100% SUBMITTAL



Drawn By	Date	SCALE
MMC	5/31/13	1"=20'
Designed By		Horiz
EE	5/31/13	Vert
Checked By		Project Number
DOS	5/31/13	20110044
Approved By		

CITY OF ARLINGTON
173RD STREET NE EXTENSION
WATER & SEWER PLAN

Drawing No.	WS7
Sheet No.	
of Total	

No.	Date	Revision	By	Appr.