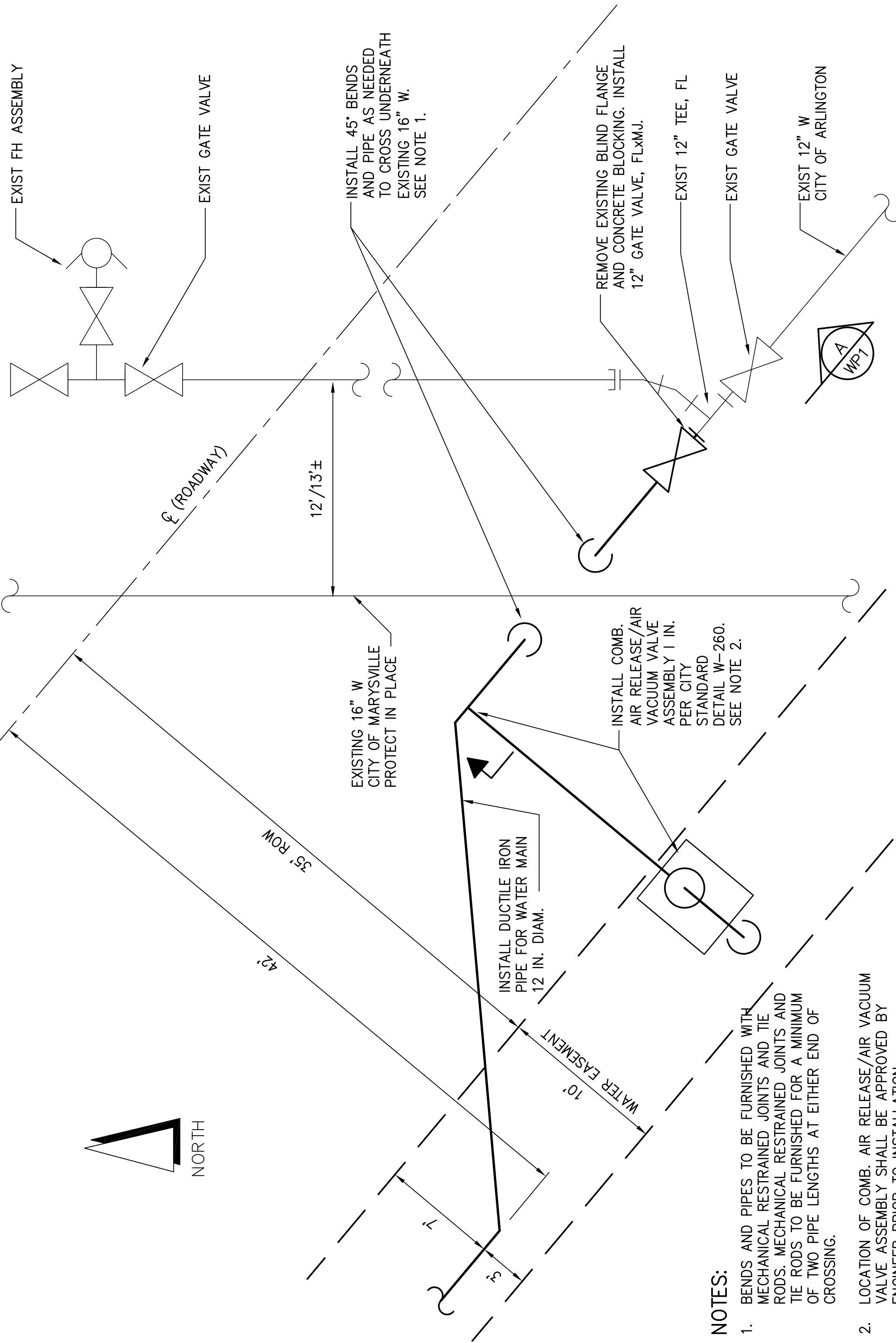


NORTH

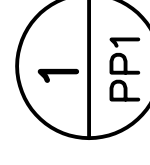


**NOTES:**

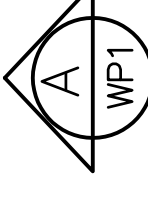
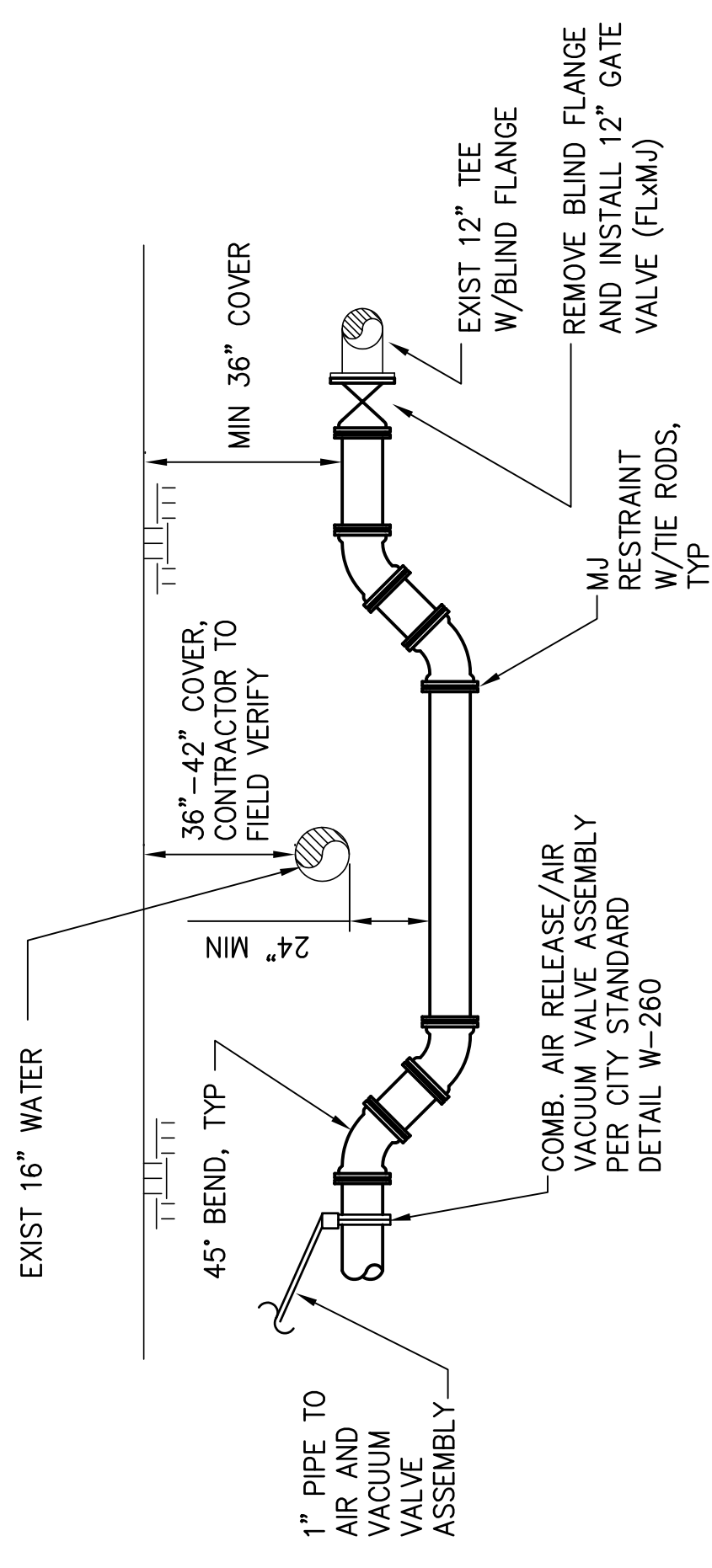
1. BENDS AND PIPES TO BE FURNISHED WITH MECHANICAL RESTRAINED JOINTS AND TIE RODS. MECHANICAL RESTRAINED JOINTS AND TIE RODS TO BE FURNISHED FOR A MINIMUM OF TWO PIPE LENGTHS AT EITHER END OF CROSSING.
2. LOCATION OF COMB. AIR RELEASE/AIR VACUUM VALVE ASSEMBLY SHALL BE APPROVED BY ENGINEER PRIOR TO INSTALLATION.

**1 CONNECTION TO EXISTING 12" WATER MAIN**

NTS



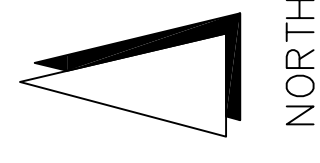
PP1



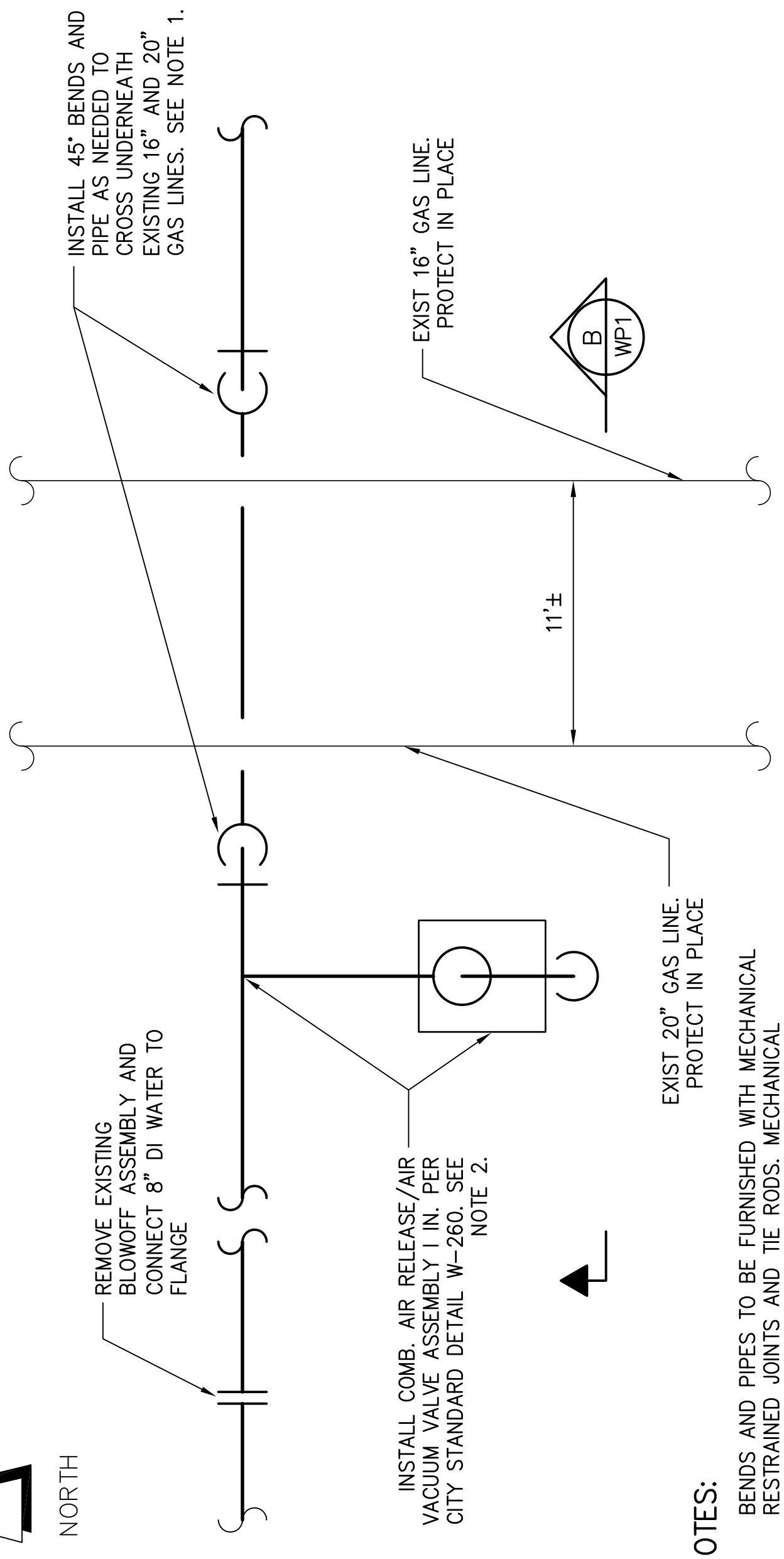
A WP1

**CONNECTION TO EXISTING 12" WATER MAIN**

NTS



NORTH

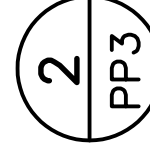


**NOTES:**

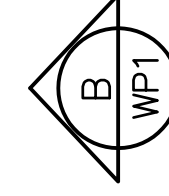
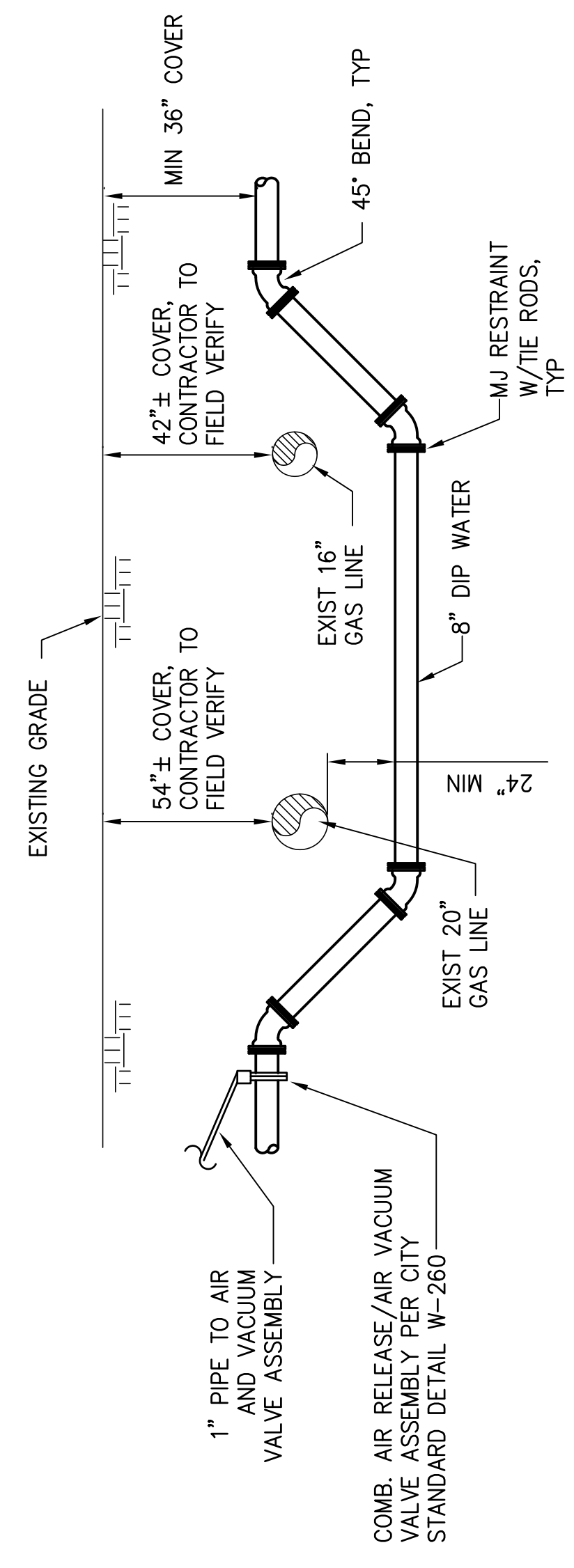
1. BENDS AND PIPES TO BE FURNISHED WITH MECHANICAL RESTRAINED JOINTS AND TIE RODS. MECHANICAL RESTRAINED JOINTS AND TIE RODS TO BE FURNISHED FOR A MINIMUM OF TWO PIPE LENGTHS AT EITHER END OF CROSSING.
2. LOCATION OF COMB. AIR RELEASE/AIR VACUUM VALVE ASSEMBLY SHALL BE APPROVED BY ENGINEER PRIOR TO INSTALLATION.

**8" WATER MAIN**

NTS



PP3



B WP1

**8" WATER MAIN CROSSING EXISTING GAS MAINS**

NTS



1-800-424-5555 OR 811

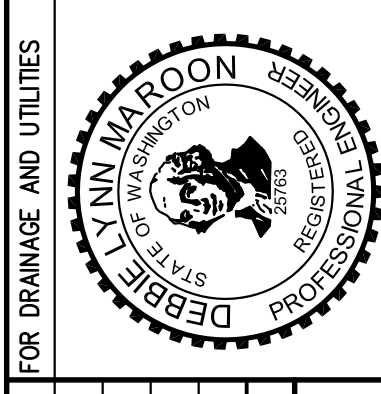
PLAN CHECK	BY	DATE

DESIGNED BY:	DATE NO.	REVISION	BY
DLM			

APPROVED FOR CONSTRUCTION

JAMES KELLY, PE  
PUBLIC WORKS DIRECTOR

DATE APPROVED: \_\_\_\_\_



**AECOM**

10900 NE 8th Street, Suite 750  
Bellevue, WA 98004

701 2nd Ave, Suite 1000  
Seattle, WA 98104

WWW.AECOM.COM

CITY OF ARLINGTON

AIRPORT BOULEVARD ROAD IMPROVEMENTS

WATER MAIN DETAILS

REFERENCE SHEET NO. WP1

SHEET OF

SHEETS