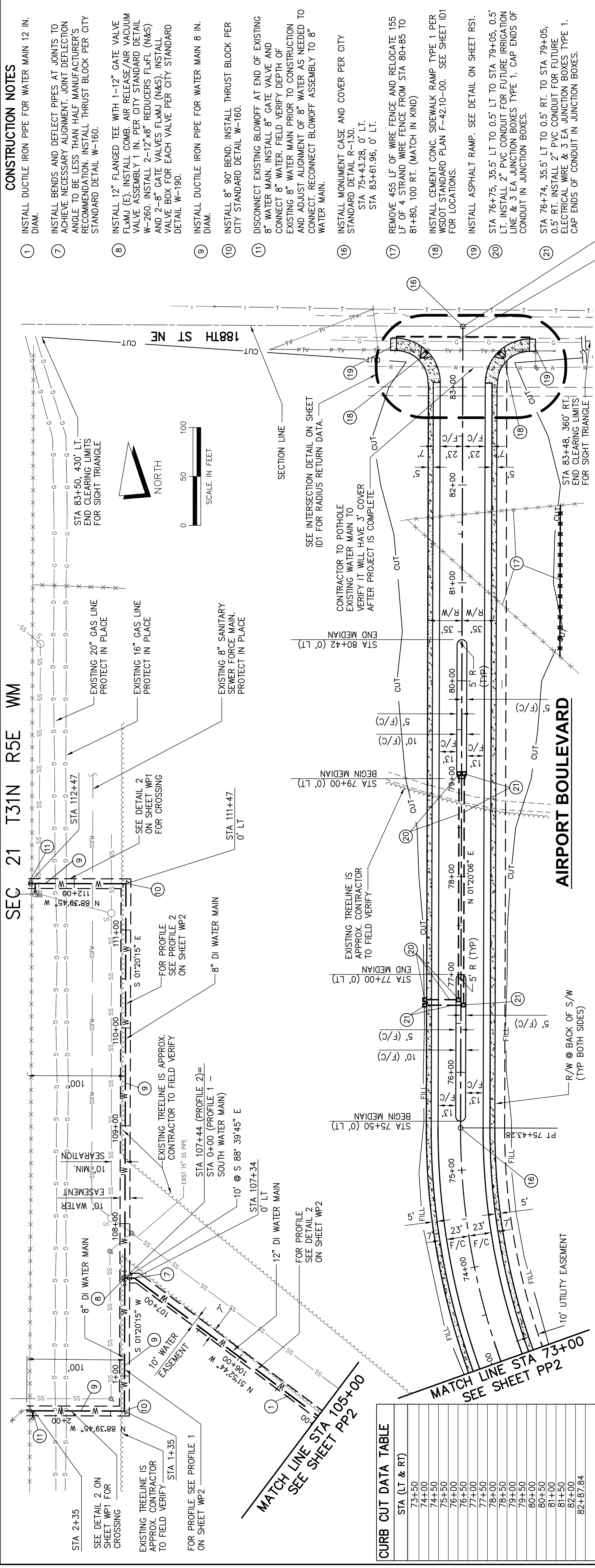
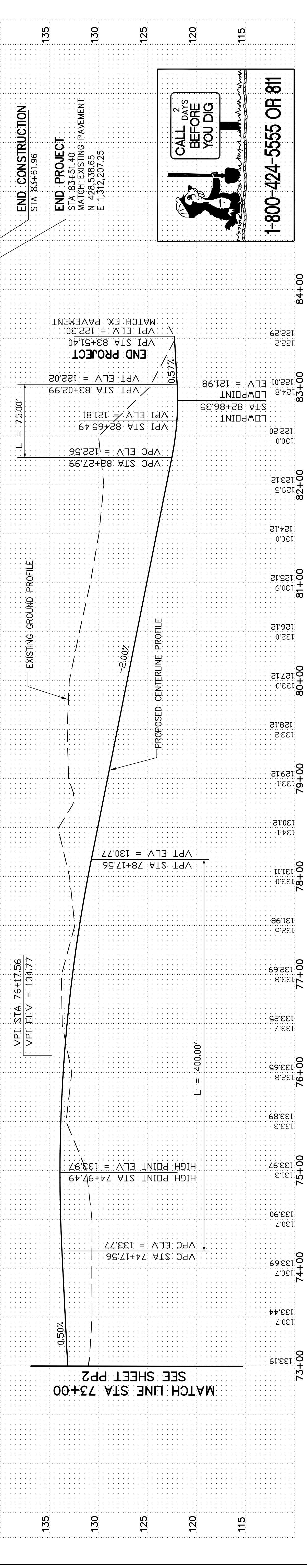


SEC 21 T31N R5E WM



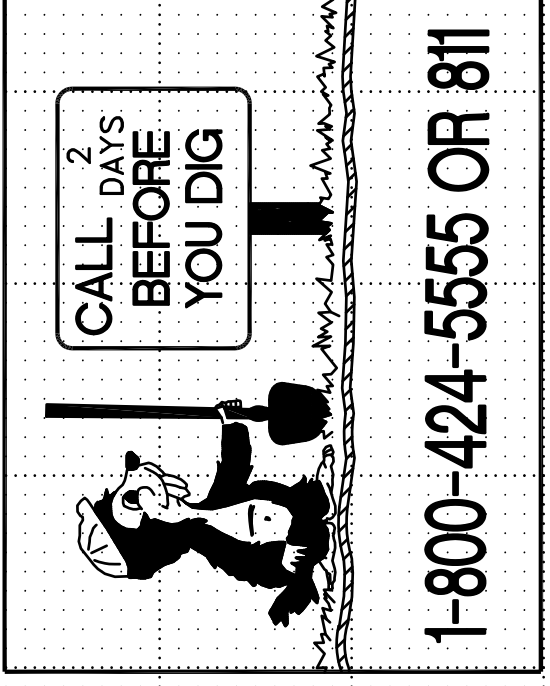
AIRPORT BOULEVARD



CURB CUT DATA TABLE

STA (LT & RT)
73+50
74+00
74+50
75+00
76+00
76+50
77+00
77+50
78+00
78+50
79+00
79+50
80+00
81+00
81+50
82+00
82+87.84

- CONSTRUCTION NOTES**
- INSTALL DUCTILE IRON PIPE FOR WATER MAIN 12 IN. DIAM.
 - INSTALL BENDS AND DEFLECT PIPES AT JOINTS TO ACHIEVE NECESSARY ALIGNMENT. JOINT DEFLECTION ANGLE TO BE LESS THAN HALF MANUFACTURER'S RECOMMENDATION. INSTALL THRUST BLOCK PER CITY STANDARD DETAIL W-160.
 - INSTALL 12" FLANGED TEE WITH 1-12" GATE VALVE FLxMJ (E). INSTALL COMB. AIR RELEASE/AIR VACUUM VALVE ASSEMBLY 1 IN. PER CITY STANDARD DETAIL W-260. INSTALL 2-12"x8" REDUCERS FLxFL (N&S) AND 2-8" GATE VALVES FLxMJ (N&S). INSTALL VALVE BOX FOR EACH VALVE PER CITY STANDARD DETAIL W-190.
 - INSTALL DUCTILE IRON PIPE FOR WATER MAIN 8 IN. DIAM.
 - INSTALL 8" 90° BEND. INSTALL THRUST BLOCK PER CITY STANDARD DETAIL W-160.
 - DISCONNECT EXISTING BLOWOFF AT END OF EXISTING 8" WATER MAIN. INSTALL 8" GATE VALVE AND CONNECT 8" WATER. FIELD VERIFY DEPTH OF EXISTING 8" WATER MAIN PRIOR TO CONSTRUCTION AND ADJUST ALIGNMENT OF 8" WATER AS NEEDED TO CONNECT. RECONNECT BLOWOFF ASSEMBLY TO 8" WATER MAIN.
 - INSTALL MONUMENT CASE AND COVER PER CITY STANDARD DETAIL R-130.
STA 75+43.28, 0' LT.
STA 83+61.96, 0' LT.
 - REMOVE 455 LF OF WIRE FENCE AND RELOCATE 155 LF OF 4 STRAND WIRE FENCE FROM STA 80+85 TO 81+80, 100 RT. (MATCH IN KIND)
 - INSTALL CEMENT CONC. SIDEWALK RAMP TYPE 1 PER WSDOT STANDARD PLAN F-42.10-00. SEE SHEET ID1 FOR LOCATIONS.
 - INSTALL ASPHALT RAMP. SEE DETAIL ON SHEET RS1.
 - STA 76+75, 35.5' LT TO 0.5' LT TO STA 79+05, 0.5' RT. INSTALL 2" PVC CONDUIT FOR FUTURE IRRIGATION LINE & 3 EA JUNCTION BOXES TYPE 1. CAP ENDS OF CONDUIT IN JUNCTION BOXES.
 - STA 76+74, 35.5' LT TO 0.5' RT. TO STA 79+05, 0.5' RT. INSTALL 2" PVC CONDUIT FOR FUTURE ELECTRICAL WIRE & 3 EA JUNCTION BOXES TYPE 1. CAP ENDS OF CONDUIT IN JUNCTION BOXES.



PLAN CHECK	BY	DATE	
APPROVED FOR CONSTRUCTION	JAMES KELLY, PE PUBLIC WORKS DIRECTOR DATE APPROVED:		
FOR DRAINAGE AND UTILITIES			
FOR ROADWAY			
CITY OF ARLINGTON			
CITY OF ARLINGTON AIRPORT BOULEVARD ROAD IMPROVEMENTS PLAN AND PROFILE STA 73+00 TO STA 83+51.40			
REFERENCE SHEET NO.	PP 3	SHEET OF	SHEETS

AECOM
 701 Fifth Avenue, Suite 1100
 10900 NE 8th Street, Suite 750
 Bellevue, WA 98004
 704 2nd Ave, Suite 1000
 Seattle, WA 98104
 WWW.AECOM.COM