

LONGITUDINAL BUFFER SPACE = B								
POSTED SPEED (MPH)	25	30	35	40	45	50	55	60
LENGTH B (FEET)	155	200	250	305	360	425	495	570

MINIMUM TAPER LENGTH = L (FEET)										
LANE WIDTH (FEET)	POSTED SPEED (MPH)									
	25	30	35	40	45	50	55	60	65	70
10	105	150	205	270	450	500	550	-	-	-
11	115	165	225	294	495	550	605	660	-	-
12	125	180	245	320	540	600	660	720	780	840

SIGN SPACING = X (1)		
RURAL HIGHWAYS	60 / 65 MPH	800' ±
RURAL ROADS	45 / 55 MPH	500' ±
RURAL ROADS & URBAN ARTERIALS	35 / 40 MPH	350' ±
RURAL ROADS, URBAN ARTERIALS, RESIDENTIAL & BUSINESS DISTRICTS	25 / 30 MPH	200' ± (2)
URBAN STREETS	25 MPH OR LESS	100' ± (2)

ALL SIGNS ARE BLACK ON ORANGE UNLESS DESIGNATED OTHERWISE

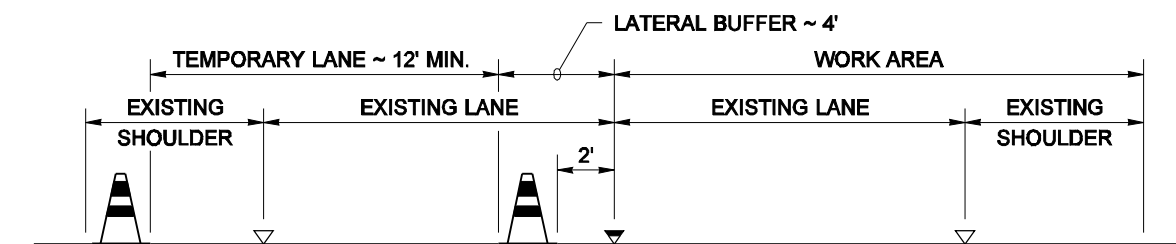
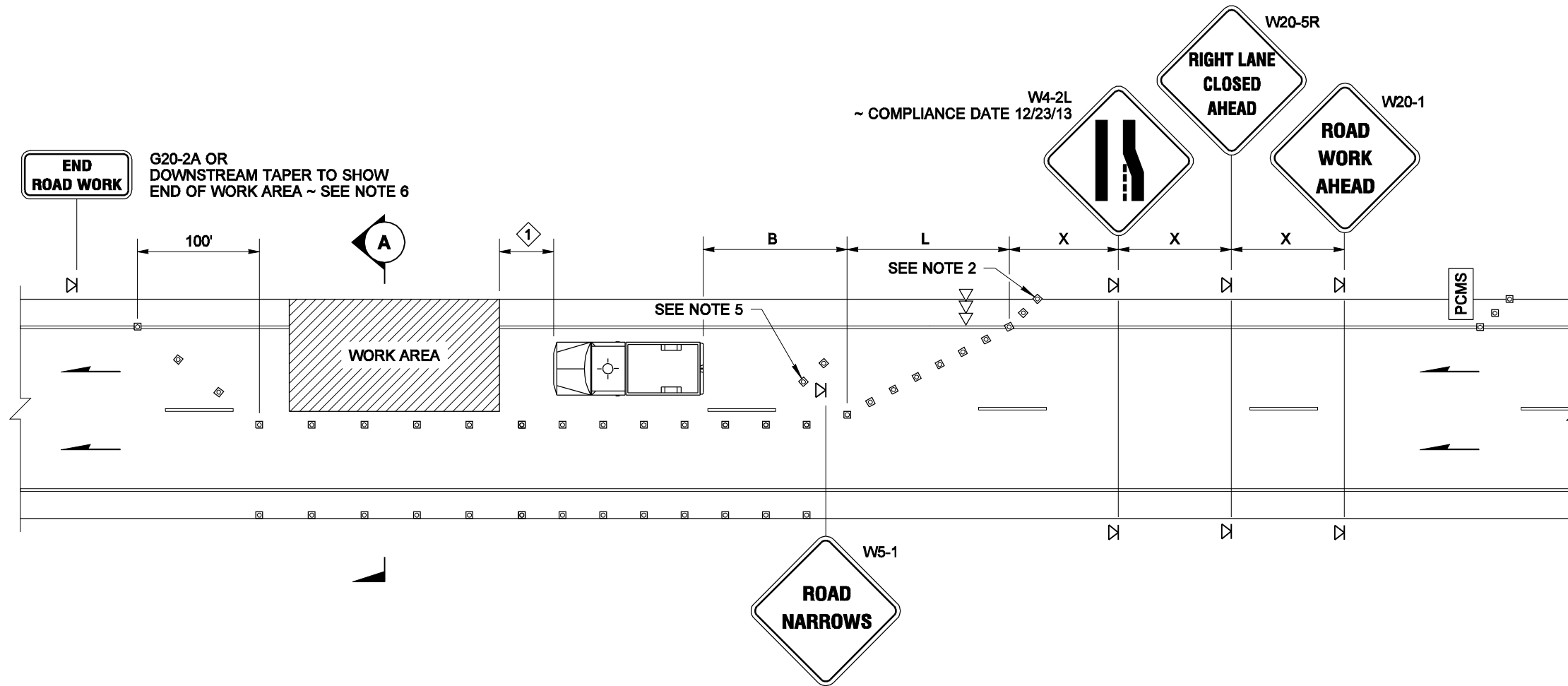
BUFFER DATA	
TYPICAL PROTECTIVE VEHICLE WITH TMA (SEE NOTE 1)	
VEHICLE TYPE	LOADED WEIGHT
4 YARD DUMP TRUCK, SERVICE TRUCK, FLAT BED, ETC.	MINIMUM WEIGHT 15,000 LBS. (MAXIMUM WEIGHT SHALL BE IN ACCORDANCE WITH MANUFACTURER RECOMMENDATION)
1 ROLL AHEAD STOPPING DISTANCE = 30 FEET MIN. (DRY PAVEMENT ASSUMED)	

CHANNELIZING DEVICE SPACING		
POSTED SPEED (MPH)	IN TAPER (FEET)	IN TANGENT (FEET)
50 / 70	40	80
35 / 45	30	60
25 / 30	20	40

- (1) ALL SIGN SPACING MAY BE ADJUSTED TO ACCOMMODATE AT-GRADE INTERSECTIONS, AND DRIVEWAYS.
- (2) THIS SIGN SPACING MAY BE REDUCED IN URBAN AREAS TO FIT ROADWAY CONDITIONS.

NOTES

1. A Protective Vehicle is recommended regardless if a Truck Mounted Attenuator (TMA) is available; a work vehicle may be used. When no TMA is used, the Protective Vehicle shall be strategically located to shield workers, with no specific Roll-Ahead Stopping Distance.
2. Extend device taper (L/3) across shoulder ~ recommended.
3. Portable Changeable Message Sign (PCMS) ~ recommended.
4. Traffic Safety Drums for all tapers on high speed roadway ~ recommended.
5. Transverse Devices in closed lane every 1000' ± ~ recommended.
6. Channelizing Device spacing for the downstream taper option shall be 20' O.C.
7. Use advanced notice for any overwidth loads prior to lane closure for alternative routes if applicable ~ recommended.
8. For signs size refer to Manual on Uniform Traffic Control Devices (MUTCD) and WSDOT Sign Fabrication Manual M55-05.



LEGEND

- SIGN LOCATION
- CHANNELIZING DEVICES
- PROTECTIVE VEHICLE ~ RECOMMENDED
- PORTABLE CHANGEABLE MESSAGE SIGN
- ARROW PANEL
- EXISTING EDGE STRIPE
- EXISTING LANE STRIPE
- TEMPORARY TRAFFIC CONTROL DEVICE

**FOR LOCAL AGENCY USE ONLY
NOT FOR USE ON STATE ROUTES**



EXPIRES AUGUST 9, 2007

NOTE: THIS PLAN IS NOT A LEGAL ENGINEERING DOCUMENT BUT AN ELECTRONIC DRAWING. THE ORIGINAL, SIGNED BY THE ENGINEER AND APPROVED FOR PUBLICATION, IS KEPT ON FILE AT THE WASHINGTON STATE DEPARTMENT OF TRANSPORTATION. A COPY MAY BE OBTAINED UPON REQUEST.

**SINGLE LANE CLOSURE
WITH ENCROACHMENT**

STANDARD PLAN K-24.20-00

SHEET 1 OF 1 SHEET

APPROVED FOR PUBLICATION

Ken L. Smith 02-15-07

STATE DESIGN ENGINEER DATE

