

LONGITUDINAL BUFFER SPACE = B					
POSTED SPEED (MPH)	25	30	35	40	45
LENGTH B (FEET)	55	85	120	170	270

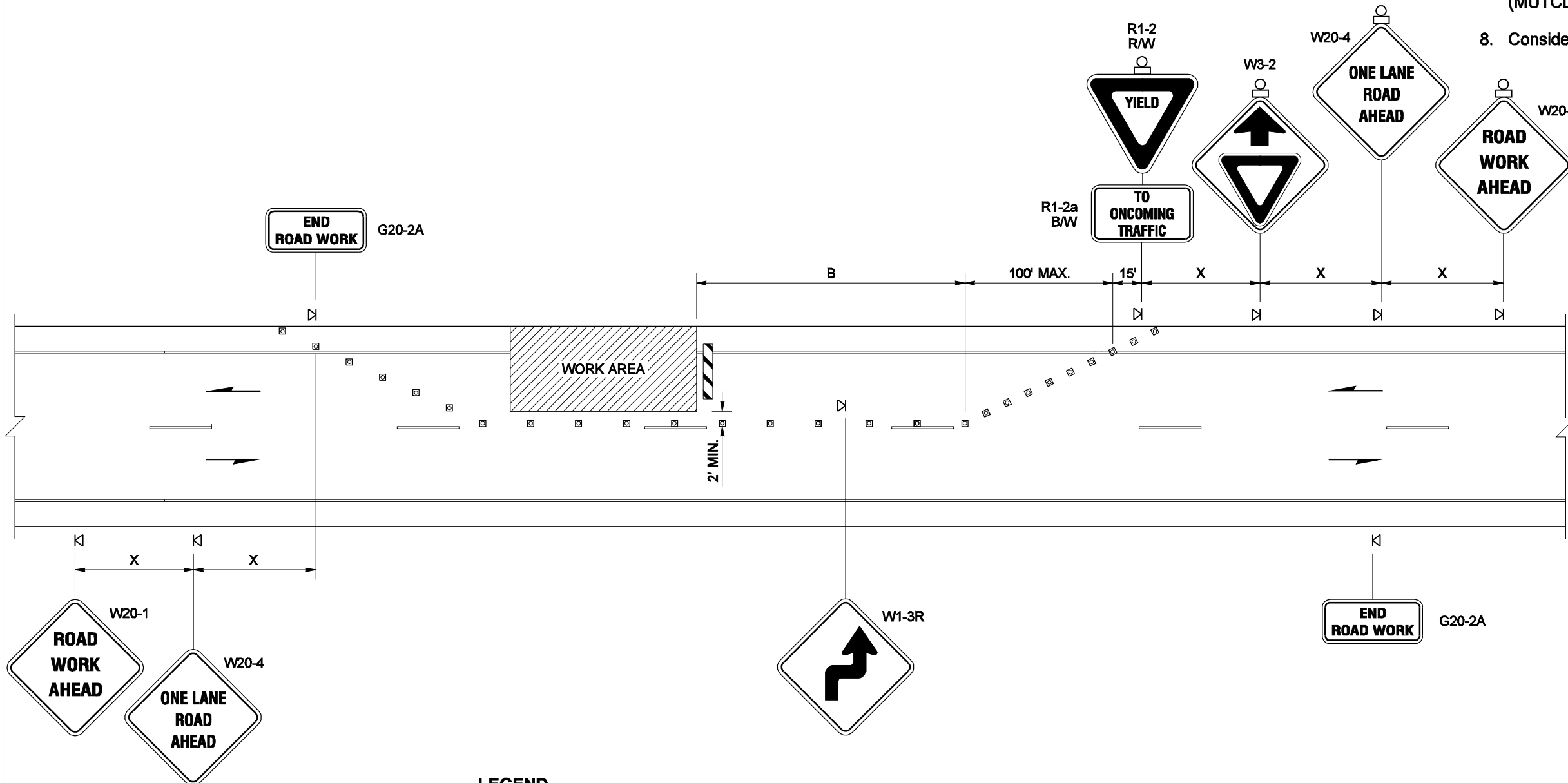
CHANNELIZING DEVICE SPACING		
POSTED SPEED (MPH)	IN TAPER (FEET)	IN TANGENT (FEET)
35 / 45	30	60
25 / 30	20	40

SIGN SPACING = X		
RURAL ROADS	45 / 55 MPH	500' ±
RURAL ROADS & URBAN ARTERIALS	35 / 40 MPH	350' ±
RURAL ROADS, URBAN ARTERIALS, RESIDENTIAL & BUSINESS DISTRICTS	25 / 30 MPH	200' ±
URBAN STREETS	25 MPH OR LESS	100' ±
ALL SIGNS ARE BLACK ON ORANGE UNLESS DESIGNATED OTHERWISE		

ALL SIGN SPACING MAY BE ADJUSTED TO ACCOMMODATE AT-GRADE INTERSECTIONS AND DRIVEWAYS.

NOTES

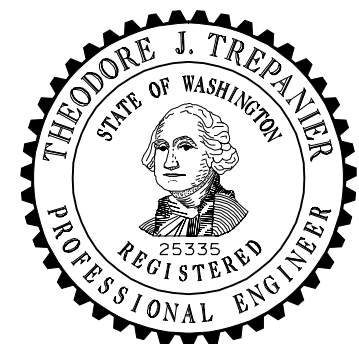
1. This plan is intended for use on roadways when traffic volumes create sufficient gaps for motor vehicles to yield.
2. Steady Burning Warning Lights (Type C per MUTCD) shall be used to mark Channelizing Devices at night.
3. Adequate sight distance shall be provided for drivers to see opposing traffic, otherwise use flaggers and/or Temporary Signal.
4. Extend Channelizing Device taper across shoulder ~ recommended.
5. Post mount signs when in place for 3 days or longer.
6. For speed limit 35 mph or higher replace W1-3R with W1-4R.
7. For signs size refer to Manual on Uniform Traffic Control Devices (MUTCD) and WSDOT Sign Fabrication Manual M55-05.
8. Consider using a PCMS for additional advance warning.



LEGEND

- SIGN LOCATION
- CHANNELIZING DEVICES
- BARRICADE ~ TYPE 3 L
- FLASHING WARNING LIGHT

**FOR LOCAL AGENCY USE ONLY
NOT FOR USE ON STATE ROUTES**



EXPIRES AUGUST 9, 2009

**LANE CLOSURE
WITHOUT FLAGGERS
~ LOW VOLUME ROAD
STANDARD PLAN K-20.20-01**

SHEET 1 OF 1 SHEET

APPROVED FOR PUBLICATION

Pasco Bakotich III 10-12-07
STATE DESIGN ENGINEER DATE



NOTE: THIS PLAN IS NOT A LEGAL ENGINEERING DOCUMENT BUT AN ELECTRONIC DUPLICATE. THE ORIGINAL, SIGNED BY THE ENGINEER AND APPROVED FOR PUBLICATION, IS KEPT ON FILE AT THE WASHINGTON STATE DEPARTMENT OF TRANSPORTATION. A COPY MAY BE OBTAINED UPON REQUEST.