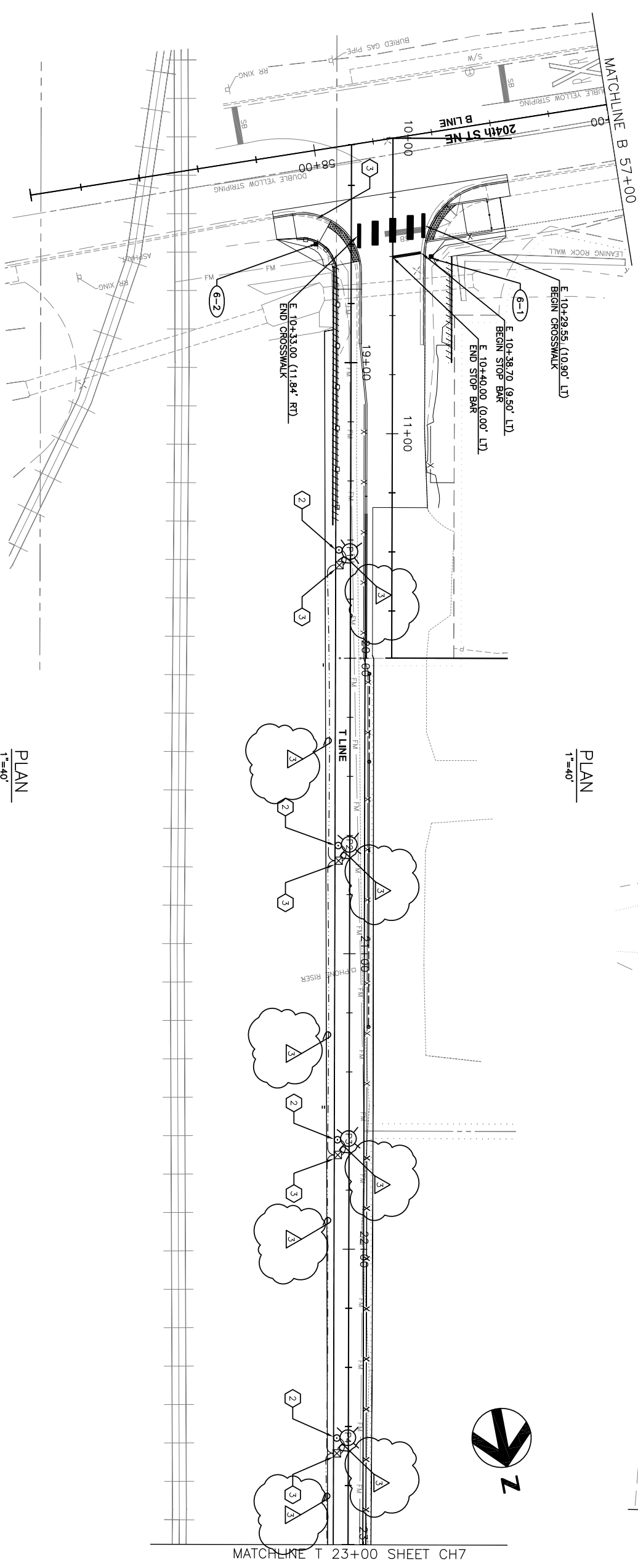
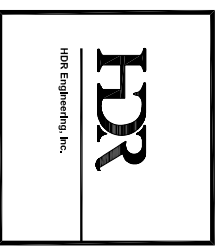
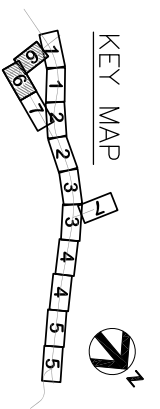


- GENERAL NOTES:**
1. ALL DIMENSIONS ARE IN FEET UNLESS OTHERWISE SPECIFIED.
  2. SEE SHEET CHD2 FOR SIGN, WIRING, AND POLE SCHEDULES.
  3. SEE SHEET LA1 FOR LEGEND AND ABBREVIATIONS.
  4. ALL CROSSWALK LINES, TRAFFIC ARROWS, AND STOP LINES TO BE THERMOPLASTIC.
- CHANNELIZATION NOTES**
1. PARKING SPACE PER C.O.A. STD. DETAILS R-240 AND R-250
  2. COMPACT PARKING SPACE PER C.O.A. STD. DETAILS R-240 AND R-250
- ILLUMINATION NOTES**
1. CONSTRUCT FOUNDATION AND INSTALL DECORATIVE ROADWAY LIGHT STANDARD WITH COPRA HEAD LIGHT FIXTURE, BANNER ARMS AND CLAMPS. FLOWER BASKET BRACKETS AND 120V DUPLEX RECEPTACLE. SEE SHEET CHD1 FOR LUMINAIRE AND FOUNDATION DETAILS.
  2. CONSTRUCT FOUNDATION AND INSTALL DECORATIVE PEDESTRIAN SCALE LIGHT STANDARD WITH POLYCARBONATE GLOBE LIGHT FIXTURE. SEE SHEET CHD1 FOR LUMINAIRE AND FOUNDATION DETAILS.
  3. INSTALL TYPE 1 JUNCTION BOX.

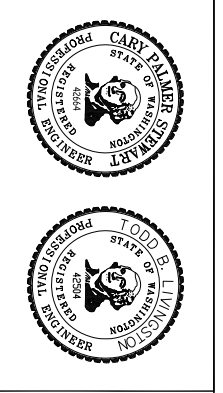
PLAN  
1"=40'



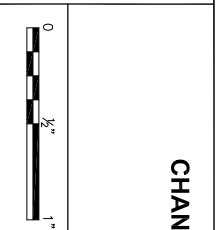
PLAN  
1"=40'



ISSUE	DATE	DESCRIPTION	PROJECT NUMBER	PROJECT MANAGER
1	11/22/2013	204TH INTERSECTION IMPROVEMENTS	0000000110731	



**CITY OF ARLINGTON**  
67th AVENUE PHASE III  
RECONSTRUCTION PROJECT



**CHANNELIZATION, SIGNING,  
& ILLUMINATION**  
CH6  
(6 OF 7)

FILENAME CH-00C-06.dwg  
SCALE 1"=40' (11x17)

SHEET  
**109**