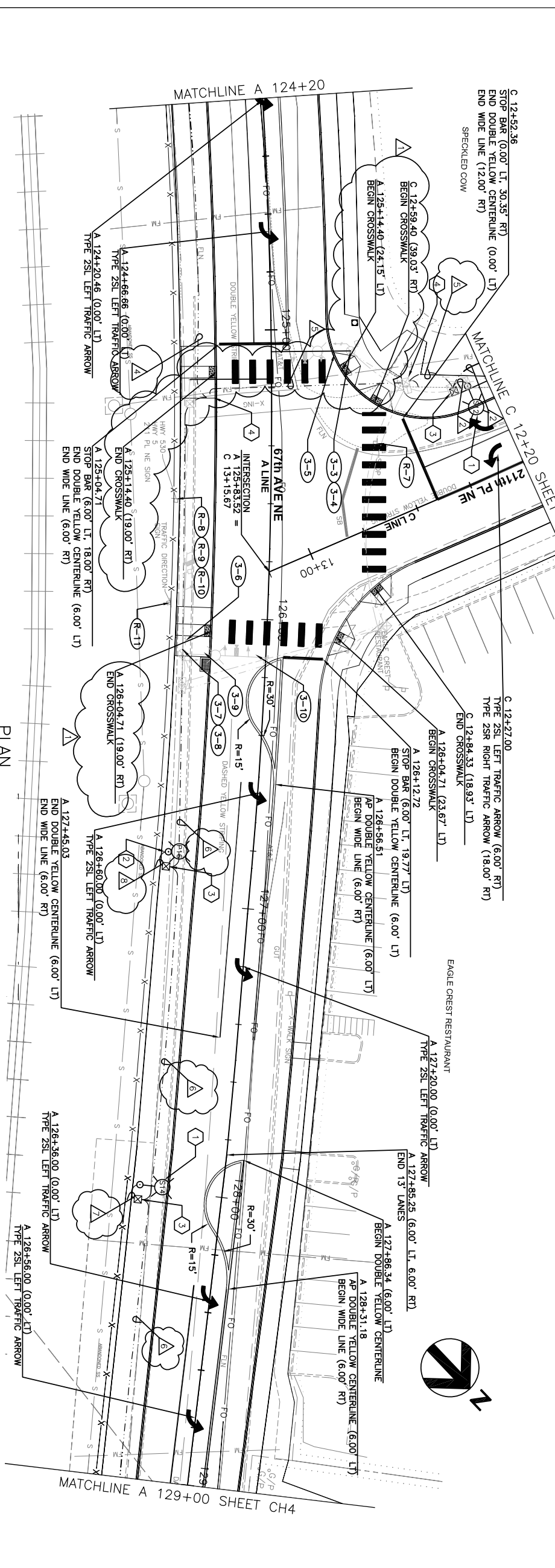


PLAN
1"=40'



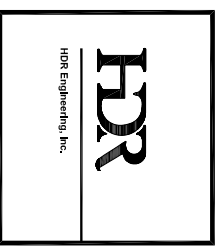
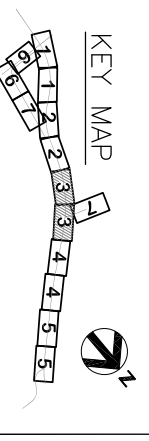
PLAN
1"=40'

- GENERAL NOTES:**
1. ALL DIMENSIONS ARE IN FEET UNLESS OTHERWISE SPECIFIED.
 2. SEE SHEET CHD2 FOR SIGN, WIRING, AND POLE SCHEDULES.
 3. SEE SHEET LA1 FOR LEGEND AND ABBREVIATIONS.
 4. ALL CROSSWALK LINES, TRAFFIC ARROWS, AND STOP LINES TO BE THERMOPLASTIC.

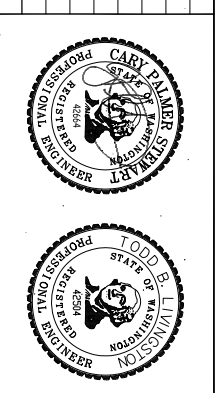
- CHANNELIZATION NOTES**
1. PARKING SPACE PER C.O.A. STD. DETAILS R-240 AND R-250
 2. COMPACT PARKING SPACE PER C.O.A. STD. DETAILS R-240 AND R-250

- ILLUMINATION NOTES**
1. CONSTRUCT FOUNDATION AND INSTALL DECORATIVE ROADWAY LIGHT STANDARD WITH COBRA HEAD LIGHT FIXTURE, BANNER ARMS AND CLAMPS, FLOWER BASKET BRACKETS AND 120V DUPLEX RECEPTACLE. SEE SHEET CHD1 FOR LUMINAIRE AND FOUNDATION DETAILS.
 2. CONSTRUCT FOUNDATION AND INSTALL DECORATIVE PEDESTRIAN SCALE LIGHT STANDARD WITH POLYCARBONATE GLOBE LIGHT FIXTURE. SEE SHEET CHD1 FOR LUMINAIRE AND FOUNDATION DETAILS.
 3. INSTALL TYPE 1 JUNCTION BOX.
 4. INSTALL CONDUIT INTO PROPOSED JUNCTION BOX FROM TRAFFIC SIGNAL SHEET S92.

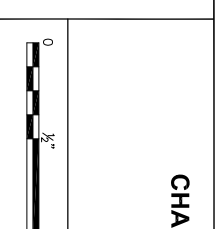
- SIGNING NOTES**
- (R-3) SPEED LIMIT (35 MPH) - REMOVE
 - (R-4) PEDESTRIAN CROSSING - REMOVE
 - (R-5) T-INTERSECTION - REMOVE
 - (R-6) TRUCK CROSSING - REMOVE
 - (R-7) STOP - REMOVE
 - (R-8) HWY 530 - REMOVE
 - (R-9) HWY 5 - REMOVE
 - (R-10) 211TH PL. NE - REMOVE
 - (R-11) TWO DIRECTION ARROWS - REMOVE
 - (S-1) SPEED LIMIT (35 MPH)
 - (S-2) TRUCK CROSSING
 - (S-3) SR 530
 - (S-4) RIGHT ARROW
 - (S-5) 211TH PL. NE
 - (S-6) 67TH AVE NE
 - (S-7) SR 530
 - (S-8) LEFT ARROW
 - (S-9) 211TH PL. NE



ISSUE	DATE	DESCRIPTION	PROJECT NUMBER
Δ	06/30/2013	211TH PL. PEDESTRIAN CROSSWALK REVISION	0000000110731



CITY OF ARLINGTON
67th AVENUE PHASE III
RECONSTRUCTION PROJECT



CHANNELIZATION, SIGNING, & ILLUMINATION
CH3
(3 OF 7)

FILENAME	CH-000-03.dwg	SHEET	106
SCALE	1"=40' (11x17)		