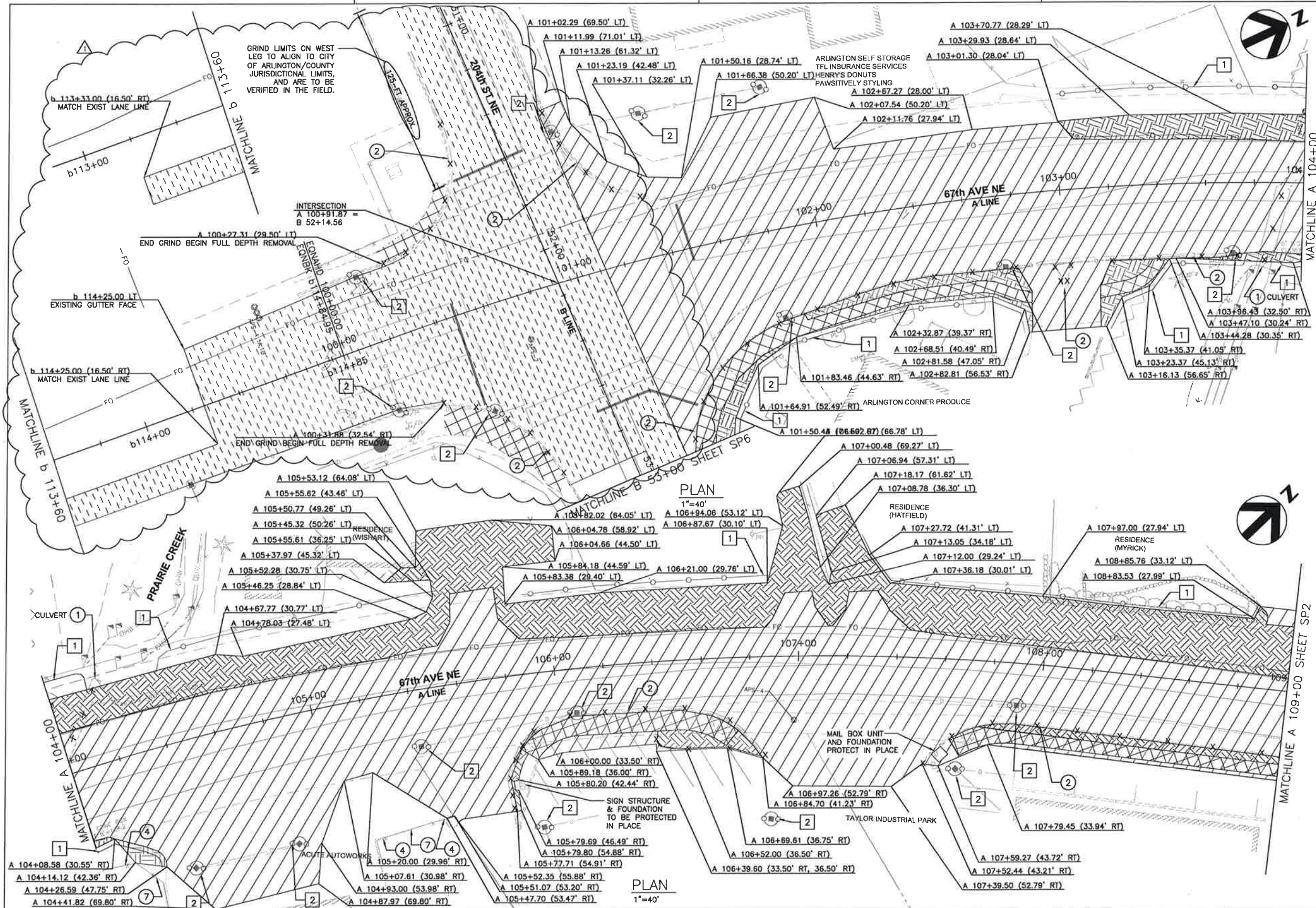
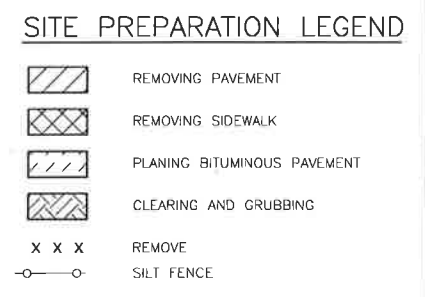


C:\pwworking\sea\d029549\1\SP-00C-01.dwg, 1/28/2014 12:54:23 PM, tlivings



**GENERAL NOTES:**

- ALL DIMENSIONS ARE IN FEET UNLESS OTHERWISE SPECIFIED.
- INSTALL CATCH BASIN INLET PROTECTION TO ALL PROPOSED CATCH BASINS DURING CONSTRUCTION. SEE DETAIL ON SHEET SPD1.



- (X) REMOVAL NOTES**
- REMOVAL OF STRUCTURE AND OBSTRUCTION
  - REMOVING CEMENT CONC. CURB AND GUTTER
  - REMOVING ASPHALT CONC. CURB
  - REMOVING FENCE
  - REMOVING PAINT LINE
  - REMOVING PAINTED TRAFFIC MARKING
  - REMOVING CHAIN LINK GATE
  - REMOVING RETAINING WALL

- (X) TESC NOTES**
- SILT FENCE, SEE DETAIL ON SHEET SPD1
  - CATCH BASIN INSERT, SEE DETAIL ON SHEET SPD1



HDR Engineering, Inc.

PROJECT MANAGER	
ISSUE	1/28/2014 204TH INTERSECTION IMPROVEMENTS
DATE	
DESCRIPTION	
PROJECT NUMBER	000000110731



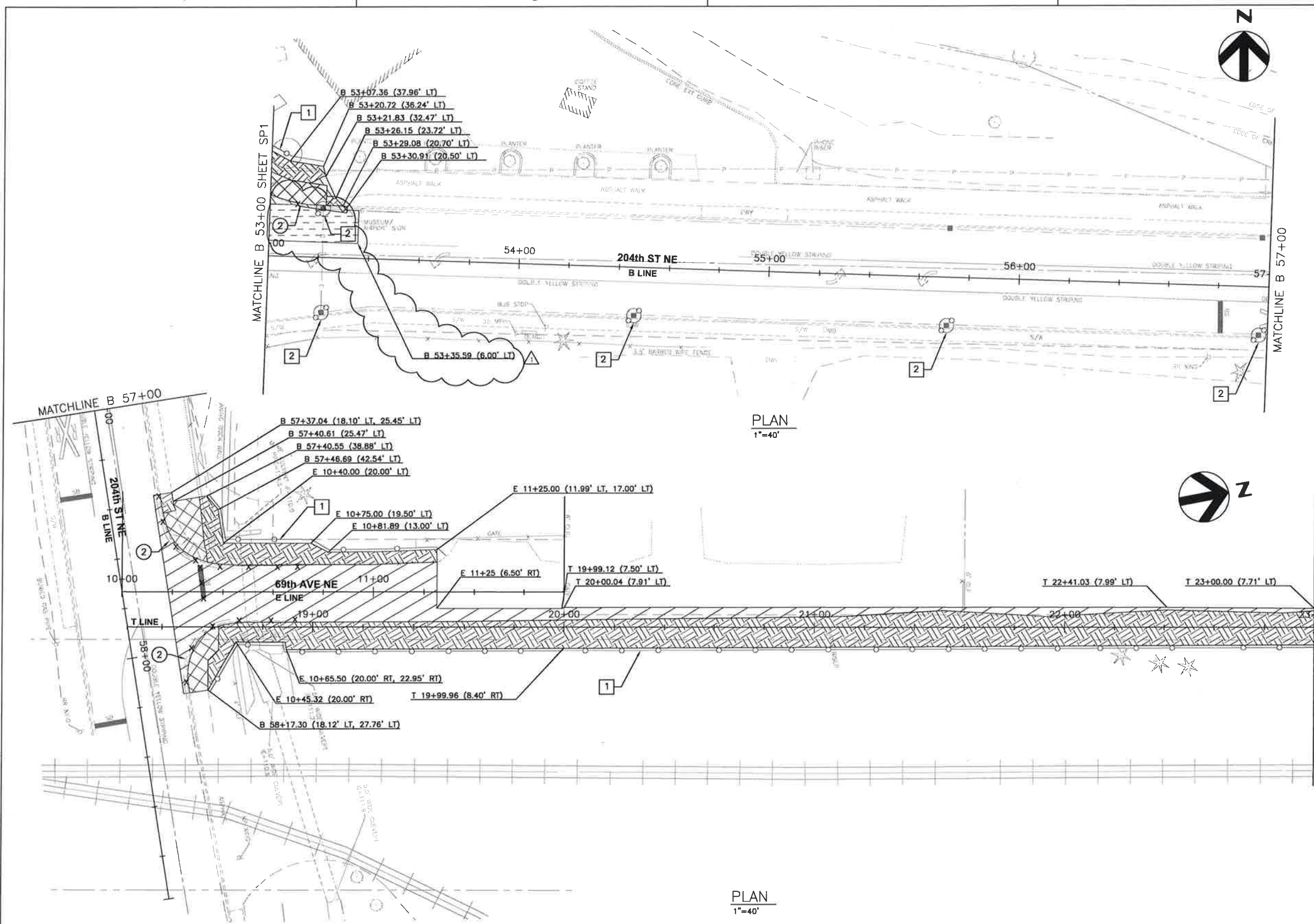
**CITY OF ARLINGTON**  
67th AVENUE PHASE III  
RECONSTRUCTION PROJECT



**SITE PREPARATION & TESC PLAN SP1 (1 OF 7)**

FILENAME	SP-00C-01.dwg	SHEET	
SCALE	1"=40' (11x17)		
			<b>012</b>

C:\pwworking\seald0295491\SP-00C-06.dwg, 1/28/2014 12:59:42 PM, tlivings



- GENERAL NOTES:**
- ALL DIMENSIONS ARE IN FEET UNLESS OTHERWISE SPECIFIED.
  - INSTALL CATCH BASIN INLET PROTECTION TO ALL PROPOSED CATCH BASINS DURING CONSTRUCTION. SEE DETAIL ON SHEET SPD1.

**SITE PREPARATION LEGEND**

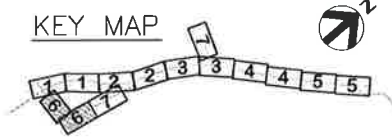
- REMOVING PAVEMENT
- REMOVING SIDEWALK
- PLANING BITUMINOUS PAVEMENT
- CLEARING AND GRUBBING
- REMOVE
- SILT FENCE

**(X) REMOVAL NOTES**

- REMOVAL OF STRUCTURE AND OBSTRUCTION
- REMOVING CEMENT CONC. CURB AND GUTTER
- REMOVING ASPHALT CONC. CURB
- REMOVING FENCE
- REMOVING PAINT LINE
- REMOVING PAINTED TRAFFIC MARKING
- REMOVING CHAIN LINK GATE
- REMOVING RETAINING WALL

**(X) TESC NOTES**

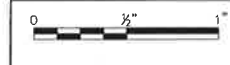
- SILT FENCE, SEE DETAIL ON SHEET SPD1
- CATCH BASIN INSERT, SEE DETAIL ON SHEET SPD1



PROJECT MANAGER	
ISSUE	1/28/2014 204TH INTERSECTION IMPROVEMENTS
DATE	
DESCRIPTION	
PROJECT NUMBER	000000110731



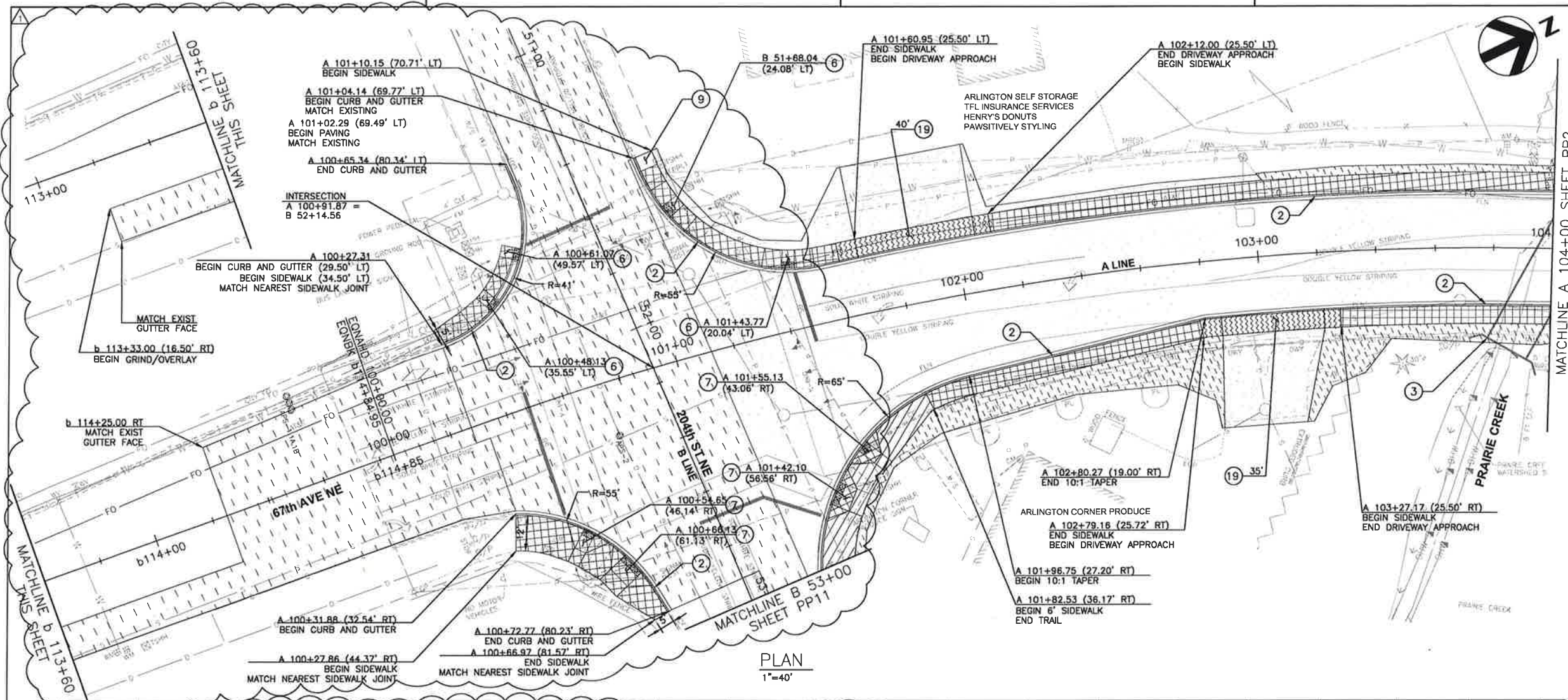
**CITY OF ARLINGTON**  
67th AVENUE PHASE III  
RECONSTRUCTION PROJECT



**SITE PREPARATION & TESC PLAN**  
SP6  
(6 OF 7)

FILENAME	SP-00C-06.dwg	SHEET	
SCALE	1"=40' (11x17)		
			<b>017</b>

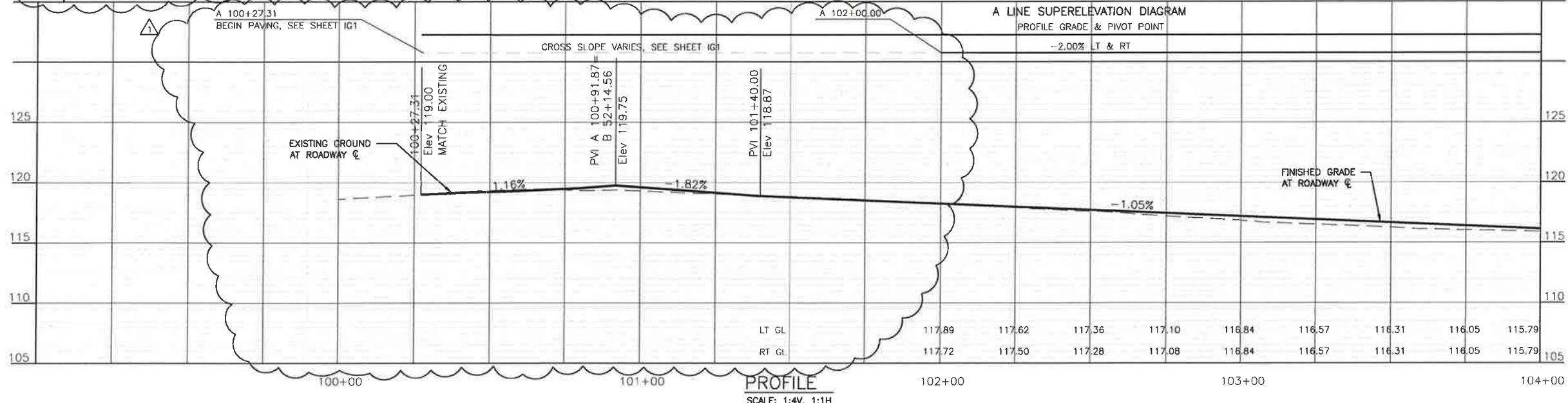
C:\pwworking\seal\029549\1PP-00C-01.dwg, 1/28/2014 1:39:01 PM, thivings



- GENERAL NOTES:**
1. ALL DIMENSIONS ARE IN FEET UNLESS OTHERWISE SPECIFIED.
  2. REFER TO SHEETS TS1-TS4 FOR ROADWAY TYPICAL SECTIONS.
  3. REFER TO SHEETS RA1-RA20 FOR ROAD APPROACH SECTIONS AND DESIGN INFORMATION.
  4. LANDSCAPE AREAS WITHIN WETLAND AND STREAM BUFFERS ARE TO BE RE-SEED WITH DRY NATIVE SEED MIX.
  5. REFER TO SHEET IG1 FOR CURB RETURN AND FLOWLINE ELEVATIONS.

- PAVING LEGEND**
- FULL DEPTH ROADWAY PAVING
  - PLANING BITUMINOUS PAVEMENT
  - APPROACH PAVING
  - CEMENT CONC. DRIVEWAY ENTRANCE
  - 4" CEMENT CONC. SIDEWALK
  - 8" CEMENT CONC. SIDEWALK
  - POROUS ASPHALT TRAIL
  - PROPERTY RESTORATION
  - BENCH
  - TRASH RECEPTACLE
  - BIKE RACK

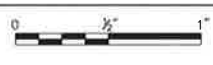
- CONSTRUCTION NOTES**
1. RETAINING WALL, SEE SHEETS WA1-WA6
  2. CEMENT CONCRETE CURB AND GUTTER TYPE 1 PER C.O.A. STD. DETAIL R-180.
  3. FISH PASSABLE CULVERT, SEE DETAILS ON SHEETS FP1-FP3
  4. REMOVE AND REPLACE EXISTING GUARDRAIL
  5. RELOCATE SIGN PER SHEETS SP1-SP2 AND CONTRACT DOCUMENTS
  6. CURB RAMP - TYPE PARALLEL A PER WSDOT STD. PLAN F-40.12-01
  7. CURB RAMP - TYPE PERPENDICULAR A PER WSDOT STD. PLAN F-40.15-01
  8. CURB RAMP - TYPE SINGLE DIRECTION A PER WSDOT STD. PLAN F-40.16-01
  9. ASPHALT TRANSITION RAMP
  10. BOLLARD, PER SNOHOMISH CO. STD. DETAIL 4-170.
  11. TACTILE WARNING STRIP
  12. 30' SLIDING CHAIN LINK FENCE GATE
  13. PEDESTRIAN HANDRAIL PER C.O.A. STD. DETAIL R-160
  14. CULVERT HEADWALL, SEE SHEET WA6
  15. CURB RAMP - TYPE SINGLE DIRECTION (MODIFIED) PER DETAIL, SEE SHEET RD1
  16. DOUBLE 20' CHAIN LINK GATE PER WSDOT STD. PLAN L-30.10-01
  17. REMOVE AND RESET EXISTING CHAIN LINK FENCE
  18. REMOVE AND RESET EXISTING GATE
  19. CEMENT CONCRETE DRIVEWAY APPROACH, TYPE 1 (MODIFIED) PER DETAIL, SEE SHEET RD1
  20. CEMENT CONCRETE DRIVEWAY APPROACH, TYPE 2 PER PER C.O.A. STD. DETAIL R-220
  21. 6" CHAIN LINK FENCE TYPE 3 PER WSDOT STD. PLAN L-20.10-01 WITH BARBED WIRE, SEE SHEET RD1.
  22. 6" CHAIN LINK FENCE TYPE 3 PER WSDOT STD. PLAN L-20.10-01.
  23. INSTALL BENCH, TRASH RECEPTACLE, OR BIKE RACK. SEE PAVING LEGEND. PROVIDE 3" HMA UNDER BENCHES, WITH 6" CONCRETE BAND BETWEEN BENCH ACP AND TRAIL.
  24. 4" CHAIN LINK FENCE TYPE 4 PER WSDOT STD. PLAN L-20.10-01.



PROJECT MANAGER	
ISSUE	DATE
1/28/2014	204TH INTERSECTION IMPROVEMENTS
PROJECT NUMBER	000000110731



**CITY OF ARLINGTON**  
67th AVENUE PHASE III  
RECONSTRUCTION PROJECT

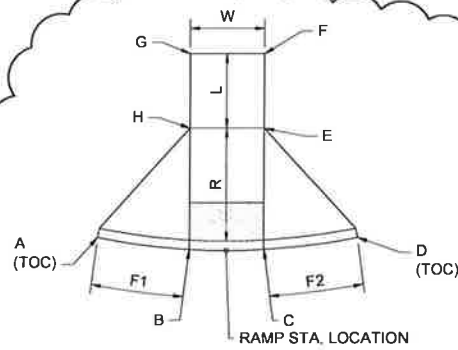


**PLAN AND PROFILE**  
PP1  
(1 OF 14)

FILENAME	PP-00C-01.dwg	SHEET	020
SCALE	1"=40' (11x17)		

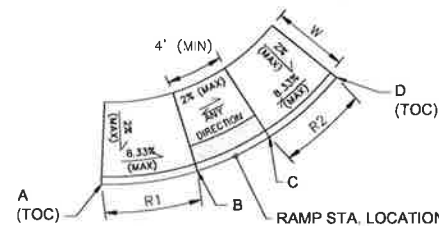


C:\pwworking\sea\029549\1\G-00C-01.dwg, 1/28/2014 2:30:02 PM, tlivings



RAMP STA. LOCATION

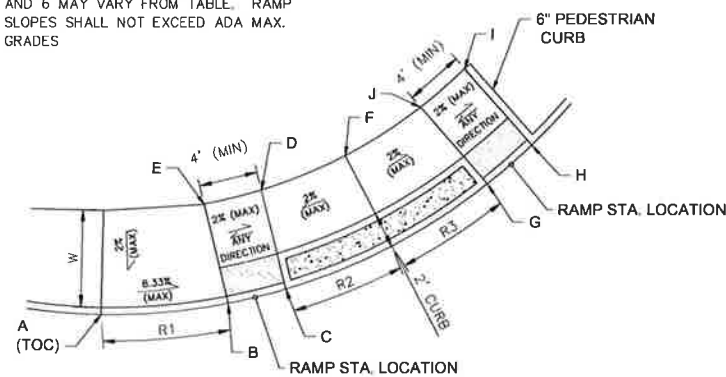
PERPENDICULAR RAMP TABLE													
RAMP	A	B	C	D	E	F	G	H	W	R	L	F1	F2
	ELEV	ELEV	ELEV	ELEV	ELEV	ELEV	ELEV	ELEV	FT	FT	FT	FT	FT
1	118.89	118.34	118.31	118.82	118.81	118.86	118.89	118.84	4'	7'	5'	5.5'	6'
2	118.99	118.47	118.42	118.90	118.92	118.99	119.04	118.97	8'	6.5'	5'	5.5'	5'
3	118.76	118.34	118.46	118.03	118.96	119.98	118.86	118.84	8'	6'	5'	5'	6'
4	118.56	118.13	118.20	118.74	118.70	118.72	118.65	118.63	4'	6.5'	4.5'	5'	5.5'



RAMP STA. LOCATION

PARALLEL RAMP TABLE							
RAMP	A	B	C	D	W	R1	R2
	ELEV	ELEV	ELEV	ELEV	FT	FT	FT
5	119.31	118.78	118.72	119.16	6'	6.5'	6'
6	119.79	119.27	119.24	119.68	6'	6.5'	6'

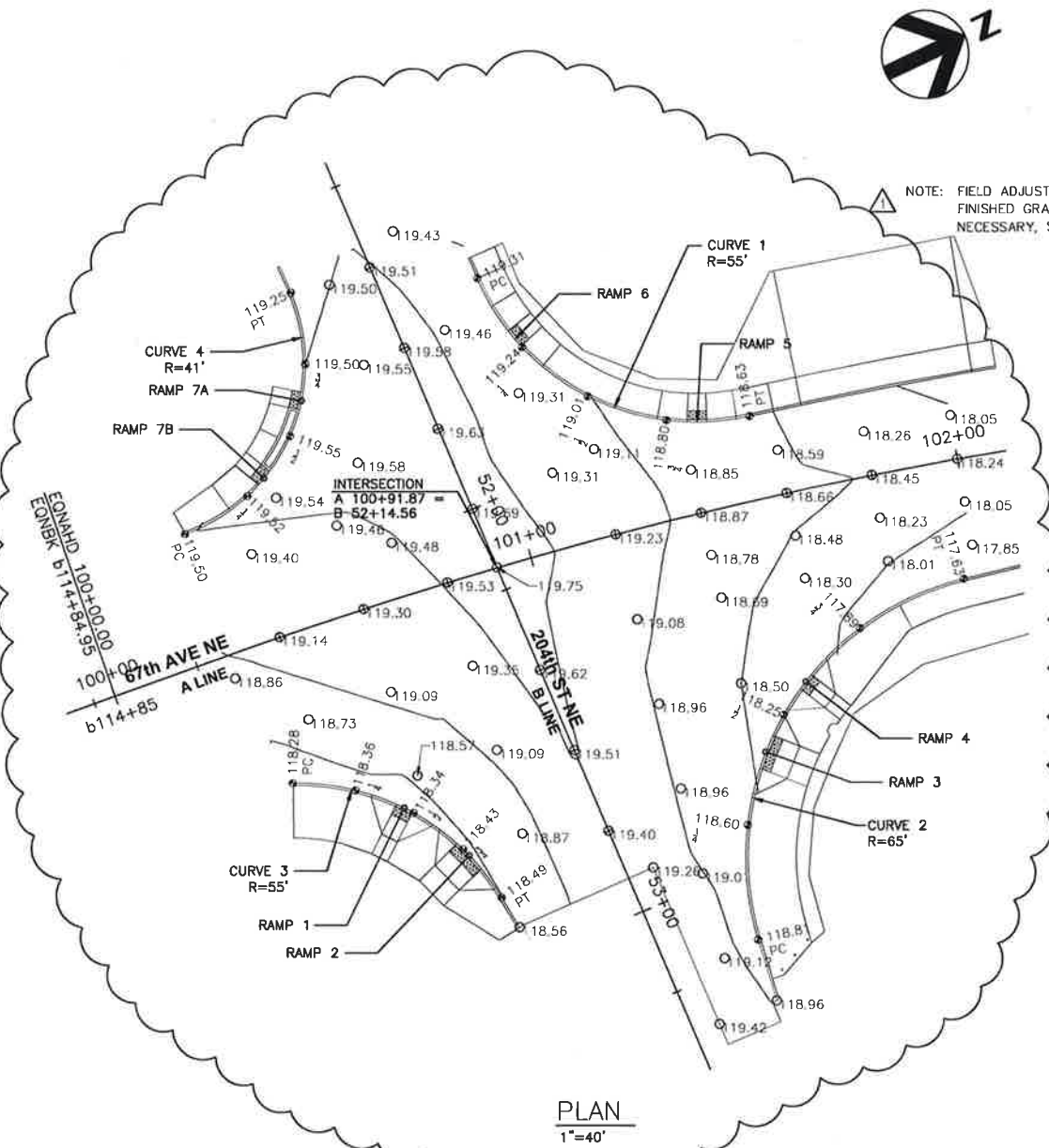
NOTE: THE GUTTER LINE AT RAMPS 5 AND 6 WAS CONSTRUCTED PRIOR TO SHEET REVISION. AS-BUILT RAMP ELEVATIONS FOR RAMPS 5 AND 6 MAY VARY FROM TABLE. RAMP SLOPES SHALL NOT EXCEED ADA MAX. GRADES



RAMP STA. LOCATION

MODIFIED PARALLEL RAMP TABLE														
RAMP	A	B	C	D	E	F	G	H	I	J	W	R1	R2	R3
	ELEV	ELEV	ELEV	ELEV	ELEV	ELEV	ELEV	ELEV	ELEV	ELEV	FT	FT	FT	FT
7A,B	120.01	119.53	119.54	119.61	119.59	119.67	119.53	119.52	119.58	119.59	6.5'	8.75'	7.2'	7.2'

NOTE: FIELD ADJUSTMENTS TO FINISHED GRADE MAY BE NECESSARY, SEE NOTE 3



PLAN  
1"=40'

- GENERAL NOTES:
1. ALL DIMENSIONS ARE IN FEET UNLESS OTHERWISE SPECIFIED.
  2. SEE SHEET PP1 FOR RAMP STATION LOCATIONS.
  3. INTERSECTION GRADES ASSUME VARIABLE GRINDING DEPTHS (2" TO 4") AND HMA PRE-LEVELING WILL BE UTILIZED TO ACHIEVE CROWNED INTERSECTION GRADE. MINOR FIELD ADJUSTMENTS TO FINISHED GRADE ELEVATIONS AND PROPOSED CURB RETURN FLOWLINE ELEVATIONS MAY BE NECESSARY TO ASSURE CONSTRUCTABILITY AND MINIMUM OVERLAY DEPTH.

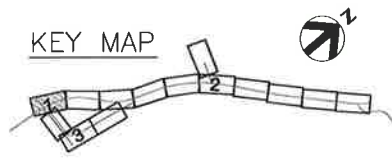
CURB RETURN FLOWLINE ELEVATIONS CURVE 1	
PC A 101+04.80 (64.82' LT)	119.31
1/4	119.24
1/2	119.01
3/4	118.80
PT A 101+55.52 (19.00' LT)	118.63
DELTA	78'48"54" L
R	55.00
L	74.97
T	44.78

CURB RETURN FLOWLINE ELEVATIONS CURVE 2	
PC A 101+29.37 (97.84' RT)	118.81
1/4	118.60
1/2	118.25
3/4	117.89
PT A 101+96.75 (27.20' RT)	117.63
DELTA	93'32"27" R
R	65.00
L	105.30
T	68.61

CURB RETURN FLOWLINE ELEVATIONS CURVE 3	
PC A 100+31.88 (32.54' RT)	118.28
1/4	118.36
1/2	118.34
3/4	118.43
PT A 100+70.65 (72.50' RT)	118.49
DELTA	59'11"29" R
R	55.00
L	58.82
T	31.24

CURB RETURN FLOWLINE ELEVATIONS CURVE 4	
PC A 100+27.31 (29.50' LT)	119.49
1/4	119.52
1/2	119.55
3/4	119.50
PT A 100+65.94 (73.84' LT)	119.25
DELTA	94'00"57" L
R	41.00
L	67.28
T	43.98

NOTE: FIELD ADJUSTMENTS TO FINISHED GRADE MAY BE NECESSARY, SEE NOTE 3



PROJECT MANAGER	
ISSUE	11/22/2013 204TH INTERSECTION IMPROVEMENTS
DATE	
DESCRIPTION	
PROJECT NUMBER	000000110731



CITY OF ARLINGTON  
67th AVENUE PHASE III  
RECONSTRUCTION PROJECT

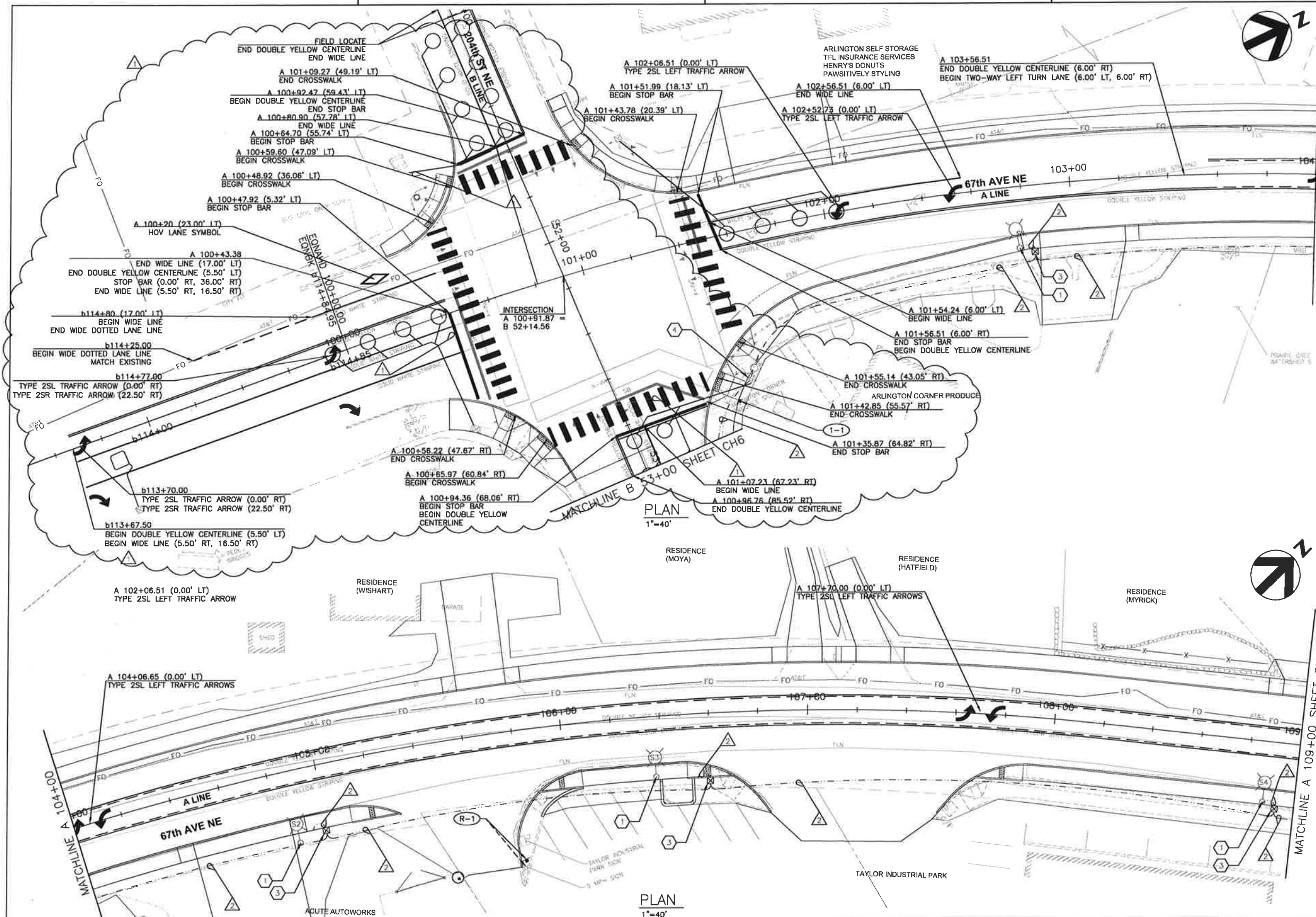
INTERSECTION GRADING PLAN  
67TH AVE NE & 204TH ST NE  
IG1  
(1 OF 3)

0 1/2" 1"

FILENAME IG-00C-01.dwg SHEET 039

SCALE 1"=40' (11x17)

C:\pwworking\sead\0295491\CH-00C-01.dwg, 1/28/2014 2:10:25 PM, tlivings

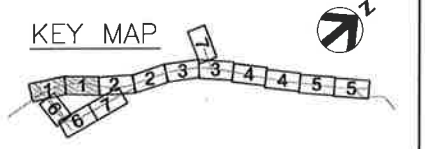


- GENERAL NOTES:**
1. ALL DIMENSIONS ARE IN FEET UNLESS OTHERWISE SPECIFIED.
  2. SEE SHEET CH02 FOR SIGN, WIRING, AND POLE SCHEDULES.
  3. SEE SHEET LA1 FOR LEGEND AND ABBREVIATIONS.
  4. ALL CROSSWALK LINES, TRAFFIC ARROWS, AND STOP LINES TO BE THERMOPLASTIC.

- CHANNELIZATION NOTES**
1. PARKING SPACE PER C.O.A. STD. DETAILS R-240 AND R-250
  2. COMPACT PARKING SPACE PER C.O.A. STD. DETAILS R-240 AND R-250

- ILLUMINATION NOTES**
1. CONSTRUCT FOUNDATION AND INSTALL DECORATIVE ROADWAY LIGHT STANDARD WITH COBRA HEAD LIGHT FIXTURE, BANNER ARMS AND CLAMPS, FLOWER BASKET BRACKETS AND 120V DUPLEX RECEPTACLE. SEE SHEET CHD1 FOR LUMINAIRE AND FOUNDATION DETAILS.
  2. CONSTRUCT FOUNDATION AND INSTALL DECORATIVE PEDESTRIAN SCALE LIGHT STANDARD WITH POLYCARBONATE GLOBE LIGHT FIXTURE. SEE SHEET CHD1 FOR LUMINAIRE AND FOUNDATION DETAILS.
  3. INSTALL TYPE 1 JUNCTION BOX.
  4. INSTALL CONDUIT INTO EXISTING JUNCTION BOX.

- SIGNING NOTES**
- (R-1) 5 MPH - REMOVE AND RESET
  - (1-1) CENTENNIAL TRAIL, RIGHT



	PROJECT MANAGER				
	ISSUE	DATE			
	1/28/2014	204TH INTERSECTION IMPROVEMENTS			

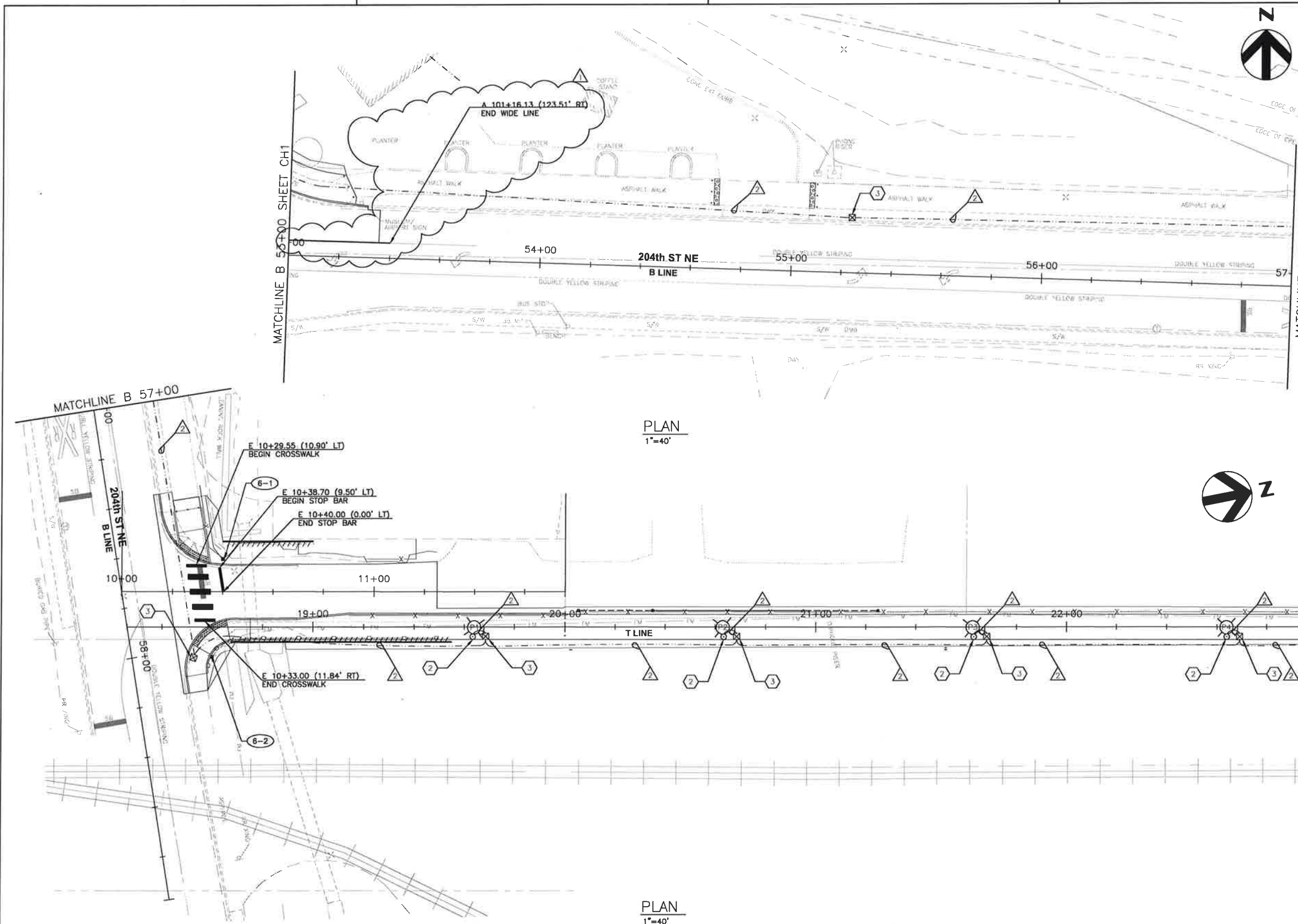
**CHANNELIZATION, SIGNING, & ILLUMINATION CH1 (1 OF 7)**

CITY OF ARLINGTON  
67th AVENUE PHASE III  
RECONSTRUCTION PROJECT

SCALE: 1"=40' (11x17)

FILENAME: CH-00C-01.dwg  
SHEET: 104

C:\pwworking\sea\029549\1CH-00C-06.dwg, 1/28/2014 2:15:04 PM, tlivings

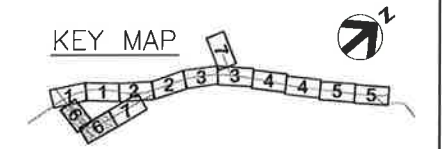


- GENERAL NOTES:**
1. ALL DIMENSIONS ARE IN FEET UNLESS OTHERWISE SPECIFIED.
  2. SEE SHEET CHD2 FOR SIGN, WIRING, AND POLE SCHEDULES.
  4. SEE SHEET LA1 FOR LEGEND AND ABBREVIATIONS.
  5. ALL CROSSWALK LINES, TRAFFIC ARROWS, AND STOP LINES TO BE THERMOPLASTIC.

- CHANNELIZATION NOTES**
1. PARKING SPACE PER C.O.A. STD. DETAILS R-240 AND R-250
  2. COMPACT PARKING SPACE PER C.O.A. STD. DETAILS R-240 AND R-250

- ILLUMINATION NOTES**
1. CONSTRUCT FOUNDATION AND INSTALL DECORATIVE ROADWAY LIGHT STANDARD WITH COBRA HEAD LIGHT FIXTURE, BANNER ARMS AND CLAMPS, FLOWER BASKET BRACKETS AND 120V DUPLEX RECEPTACLE. SEE SHEET CHD1 FOR LUMINAIRE AND FOUNDATION DETAILS.
  2. CONSTRUCT FOUNDATION AND INSTALL DECORATIVE PEDESTRIAN SCALE LIGHT STANDARD WITH POLYCARBONATE GLOBE LIGHT FIXTURE. SEE SHEET CHD1 FOR LUMINAIRE AND FOUNDATION DETAILS.
  3. INSTALL TYPE 1 JUNCTION BOX.

- SIGNING NOTES**
- (X) SIGNING NOTES
  - (6-1) STOP
  - (6-2) CENTENNIAL TRAIL, LEFT

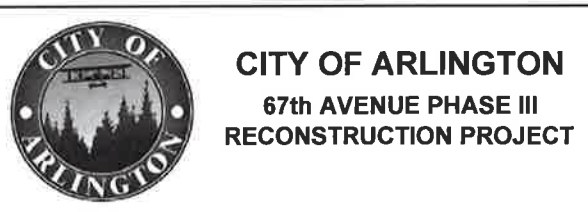


PLAN  
1"=40'

PLAN  
1"=40'



PROJECT MANAGER	
ISSUE	1/28/2014
DATE	204TH INTERSECTION IMPROVEMENTS
DESCRIPTION	
PROJECT NUMBER	0000000110731



**CHANNELIZATION, SIGNING, & ILLUMINATION CH6 (6 OF 7)**

0 1/2" 1"

FILENAME	CH-00C-06.dwg	SHEET	109
SCALE	1"=40' (11x17)		

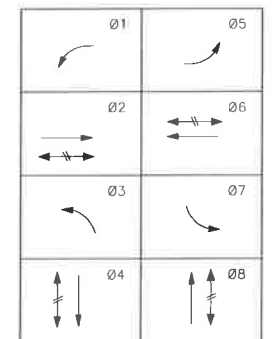
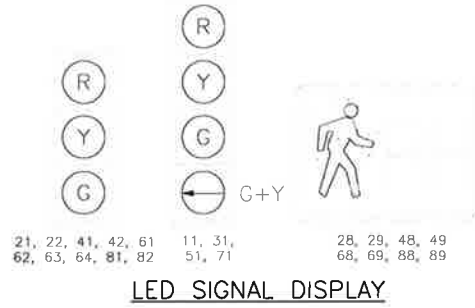
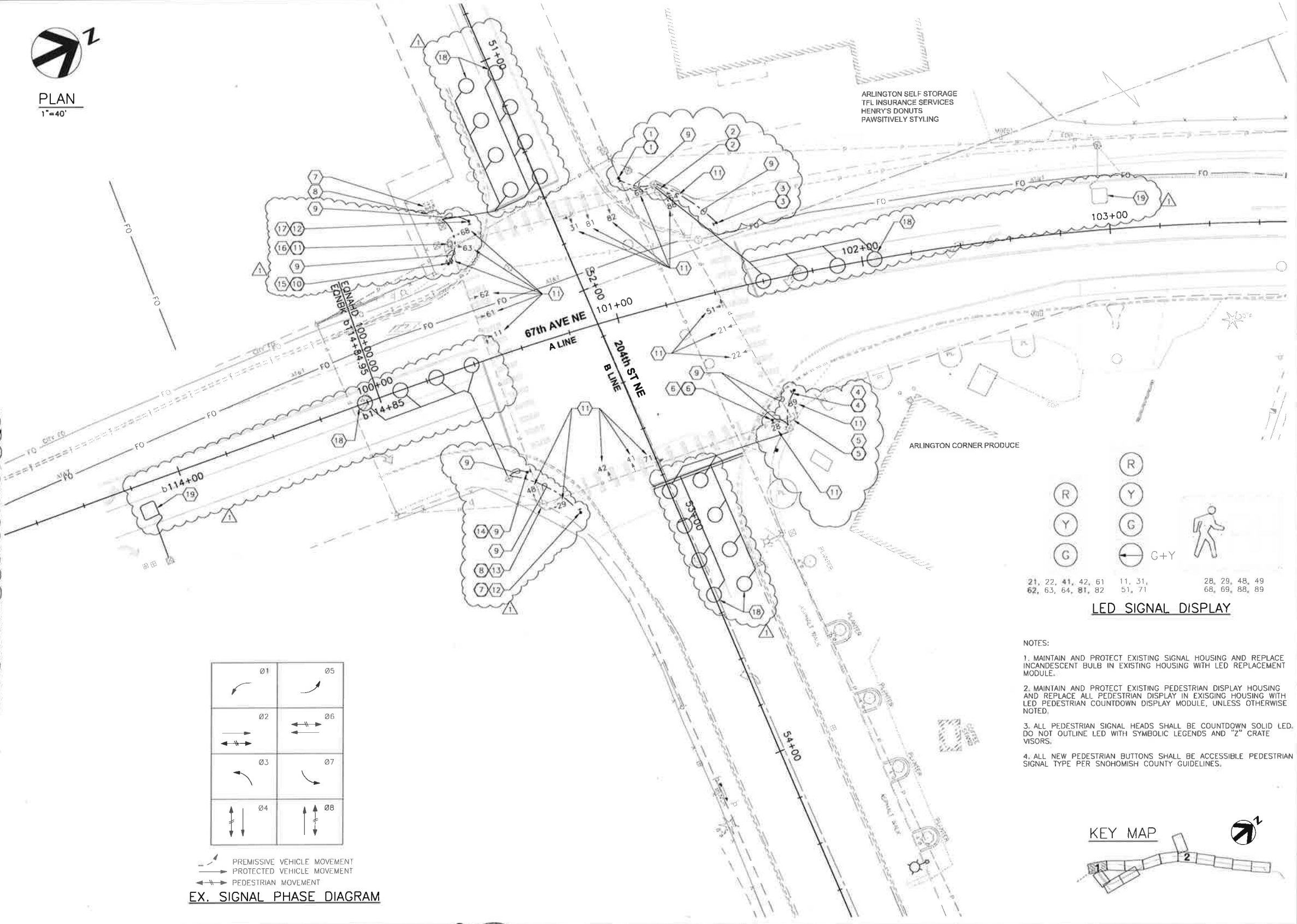
**GENERAL NOTES**

1. ALL DIMENSIONS ARE IN FEET UNLESS OTHERWISE SPECIFIED.
2. ALL WORK SHALL BE PERFORMED IN ACCORDANCE WITH WSDOT STANDARD PLANS AND SPECIFICATIONS, OR AS AMENDED BY SNOHOMISH COUNTY ENGINEERING DESIGN AND DEVELOPMENT STANDARD, EXCEPT AS MODIFIED BY CONTRAECT PLANS AND PROVISIONS.
3. UTILITY LOCATIONS ARE APPROXIMATE AND SHALL BE VERIFIED IN THE FIELD BY THE CONTRACTOR PRIOR TO ANY SIGNAL WORK. CONFLICTS SHALL BE IMMEDIATELY BROUGHT TO THE ATTENTION OF THE ENGINEER FOR RESOLUTION.
4. UNLESS OTHERWISE SPECIFIED, ALL PROPOSED SIGNAL COUNDUIT SHALL BE SCHEDULE 80 PVC.



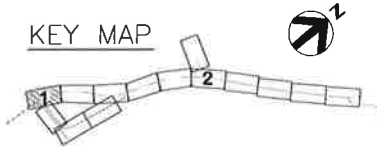
**CONSTRUCTION NOTES**

1. CONSTRUCT FOUNDATION AND INSTALL TYPE PPB POST (STA. 101+14.62, 53.65' LT) WITH POLARA PEDESTRIAN PUSHBUTTON ASSEMBLY WITH ATTACHMENT ANGLE AS SHOWN ON PLANS.
2. RETAIN AND PROTECT EXISTING SIGNAL POLE. REMOVE TWO PEDESTRIAN PUSHBUTTON ASSEMBLIES AND PATCH PUSHBUTTON HOLES.
3. CONSTRUCT FOUNDATION AND INSTALL TYPE PPB POST (STA. 101+46.81, 26.85' LT) WITH POLARA PEDESTRIAN PUSHBUTTON ASSEMBLY WITH ATTACHMENT ANGLE AS SHOWN ON PLANS.
4. CONSTRUCT FOUNDATION AND INSTALL TYPE PPB POST (STA. 101+62.96, 45.15' RT) WITH POLARA PEDESTRIAN PUSHBUTTON ASSEMBLY WITH ATTACHMENT ANGLE AS SHOWN ON PLANS.
5. RETAIN AND PROTECT EXISTING SIGNAL POLE. REMOVE TWO PEDESTRIAN PUSHBUTTON ASSEMBLIES AND PATCH PUSH BUTTON HOLES.
6. CONSTRUCT FOUNDATION AND INSTALL TYPE PPB POST (STA. 101+51.30, 54.76' RT) WITH POLARA PEDESTRIAN PUSHBUTTON ASSEMBLY WITH ATTACHMENT ANGLE AS SHOWN ON PLANS.
7. RETAIN AND PROTECT EXISTING SERVICE PEDESTAL.
8. RETAIN AND PROTECT EXISTING CONTROLLER CABINET. INSTALL CENTRAL CONTROL UNIT OF APS INSIDE EXISTING CONTROLLER CABINET.
9. ROUTE PROPOSED CONDUIT TO EXISTING JUNCTION BOX AS SHOWN ON PLANS. REMOVE EX. 2CS PEDESTRIAN PUSHBUTTON CABLE AND PULL NEW 2CS PEDESTRIAN PUSHBUTTON CABLE FROM PUSHBUTTON TO TRAFFIC SIGNAL CONTROLLER.
10. NOT USED.
11. REPLACE EXISTING INCANDESCENT BULB WITH LED REPLACEMENT MODULE.
12. CONSTRUCT FOUNDATION AND INSTALL TYPE PPB POST (STA. 100+62.38, 69.81' RT) WITH POLARA PEDESTRIAN PUSHBUTTON ASSEMBLY WITH ATTACHMENT ANGLE AS SHOWN ON PLANS.
13. RETAIN AND PROTECT EXISTING SIGNAL POLE. REMOVE TWO PEDESTRIAN PUSHBUTTON ASSEMBLIES AND PATCH PUSHBUTTON HOLES.
14. CONSTRUCT FOUNDATION AND INSTALL TYPE PPB POST (STA. 100+46.15, 47.67' RT) WITH POLARA PEDESTRIAN PUSHBUTTON ASSEMBLY WITH ATTACHMENT ANGLE AS SHOWN ON PLANS.
15. CONSTRUCT FOUNDATION AND INSTALL TYPE PPB POST (STA. 100+43.08, 41.12' LT) WITH POLARA PEDESTRIAN PUSHBUTTON ASSEMBLY WITH ATTACHMENT ANGLE AS SHOWN ON PLANS.
16. RETAIN AND PROTECT EXISTING SIGNAL POLE. REMOVE TWO PEDESTRIAN PUSHBUTTON ASSEMBLIES AND PATCH PUSHBUTTON HOLES.
17. CONSTRUCT FOUNDATION AND INSTALL TYPE PPB POST (STA. 100+55.61, 54.64' LT) WITH POLARA PEDESTRIAN PUSHBUTTON ASSEMBLY WITH ATTACHMENT ANGLE AS SHOWN ON PLANS.
18. INSTALL WSDOT TYPE IIB INDUCTION LOOP. LOOPS SHALL WIRE IN SERIES AND SPLICE TO EX. LOOP FEEDER CABLES.
19. MAINTAIN AND PROTECT EX. LOOP AND ASSOCIATED LOOP FEEDER CABLES.



PERMISSIVE VEHICLE MOVEMENT  
 PROTECTED VEHICLE MOVEMENT  
 PEDESTRIAN MOVEMENT  
**EX. SIGNAL PHASE DIAGRAM**

- NOTES:**
1. MAINTAIN AND PROTECT EXISTING SIGNAL HOUSING AND REPLACE INCANDESCENT BULB IN EXISTING HOUSING WITH LED REPLACEMENT MODULE.
  2. MAINTAIN AND PROTECT EXISTING PEDESTRIAN DISPLAY HOUSING AND REPLACE ALL PEDESTRIAN DISPLAY IN EXISGING HOUSING WITH LED PEDESTRIAN COUNTDOWN DISPLAY MODULE, UNLESS OTHERWISE NOTED.
  3. ALL PEDESTRIAN SIGNAL HEADS SHALL BE COUNTDOWN SOLID LED. DO NOT OUTLINE LED WITH SYMBOLIC LEGENDS AND "Z" CRATE VISORS.
  4. ALL NEW PEDESTRIAN BUTTONS SHALL BE ACCESSIBLE PEDESTRIAN SIGNAL TYPE PER SNOHOMISH COUNTY GUIDELINES.



C:\pwworking\sea\d0295491\SG-00C-01.dwg, 1/28/2014 2:57:13 PM, tlivings



PROJECT MANAGER	
ISSUE	1/28/2014 204TH INTERSECTION IMPROVEMENT
DATE	
DESCRIPTION	
PROJECT NUMBER	0000000110731



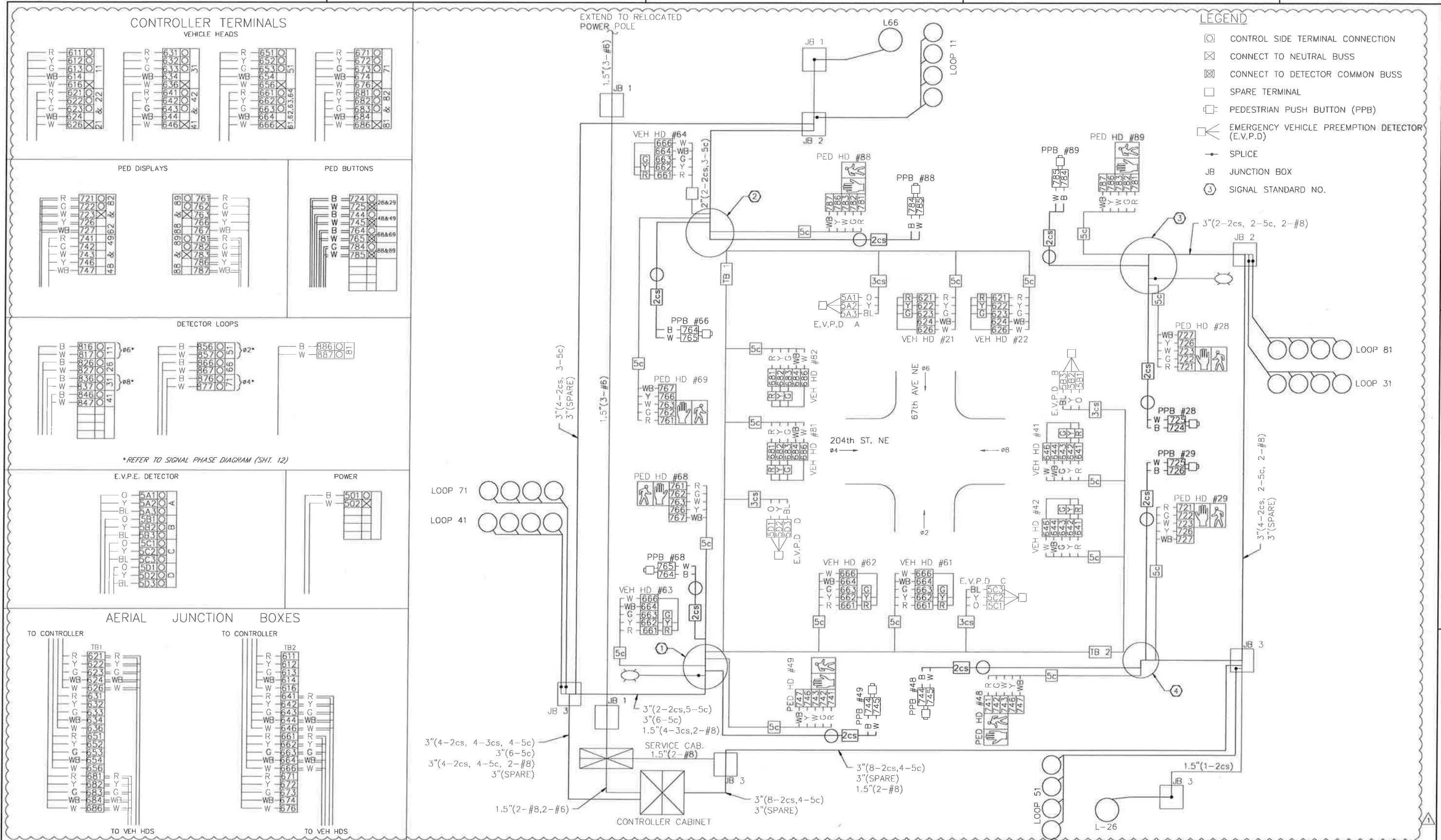
**CITY OF ARLINGTON**  
**67th AVENUE PHASE III**  
**RECONSTRUCTION PROJECT**

**TRAFFIC SIGNAL PLAN**  
**67th AVE NE / 204th ST NE**  
**SG1**  
**(1 OF 4)**

FILENAME	SG-00C-01.dwg	SHEET
SCALE	1"=20' (11x17)	<b>114</b>



C:\pwworking\seald0295491\SG-00C-05.dwg, 1/28/2014 2:24:37 PM, tlivings



PROJECT MANAGER	
ISSUE	1/28/2014
DATE	204TH INTERSECTION IMPROVEMENT
DESCRIPTION	
PROJECT NUMBER	0000000110731



**CITY OF ARLINGTON**  
67th AVENUE PHASE III  
RECONSTRUCTION PROJECT

**WIRING DIAGRAM**  
67th AVE NE / 211th PL NE  
SG3  
(3 OF 4)

0 1/2" 1"	FILENAME	SG-00C-05.dwg	SHEET
	SCALE	1"=40' (11x17)	<b>116</b>